

PRL-41

Greenprints for Strategic Conservation Investments



RECEIVED AT PRL MEETING ON 7/31/18

What is a **Greenprint**?

Strategic conservation plan or assessment tool that reveals the economic, social and health benefits that parks, open space, and working lands provide communities.



In a changing region, nature is often an after thought.



San Diego County

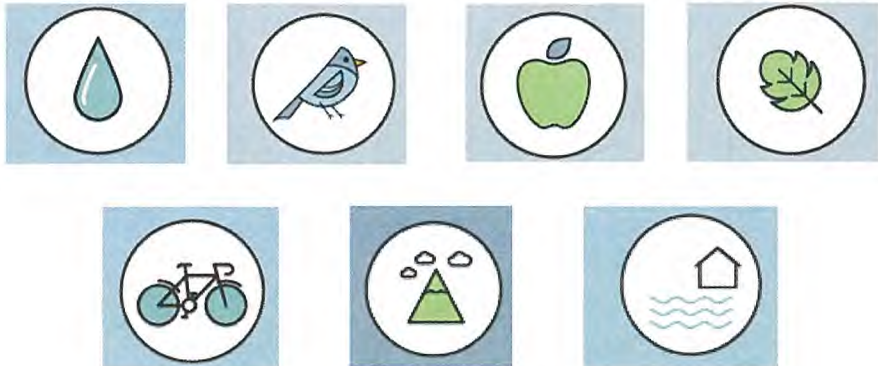
Why a **Greenprint**?



Los Angeles River

Why a **Greenprint**?

Yet nature provides essential services for human health and well-being, economic vitality and resilience.



Why a **Greenprint**?

A Greenprint enables us to plan for and invest in nature and its many benefits, before it is lost forever.



Often data is obtained too late and is confusing



Why a **Greenprint** in the San Francisco Bay Area?



Problem:

- Conservation is not considered early enough in the planning and project development process
- Confusing access to data
- Siloed planning processes are inefficient and ineffective
- Limited funding for conservation investments

Why a **Greenprint** in the San Francisco Bay Area?



Photo by Will Lewis

Solution:

- Incorporate natural resource conservation **early in planning processes**
- Supply planners with a **one-stop shop** for natural resource data and assessments
- Provide a common analysis for **funding opportunities**
- Raise awareness about **nature** and its benefits

Why a **Greenprint** in Maui Nui?



What is the problem statement?

How can a Greenprint provide value?

What is the goal of a **Greenprint**?

- Protect and restore environmental services
- Enhance human health and quality of life
- Direct conservation investments
- Incentivize balanced growth
- Educate on nature's values



What is the goal of a **Greenprint** for Maui County?



Credit: Maui Blog

Who uses a **Greenprint**?

- Conservation organizations
- Land use planners
- Elected Officials
- Consultants
- Farmers/ranchers
- Community members
- Infrastructure agencies
- Developers
- Funders



Who will use a **Greenprint** for Maui County?

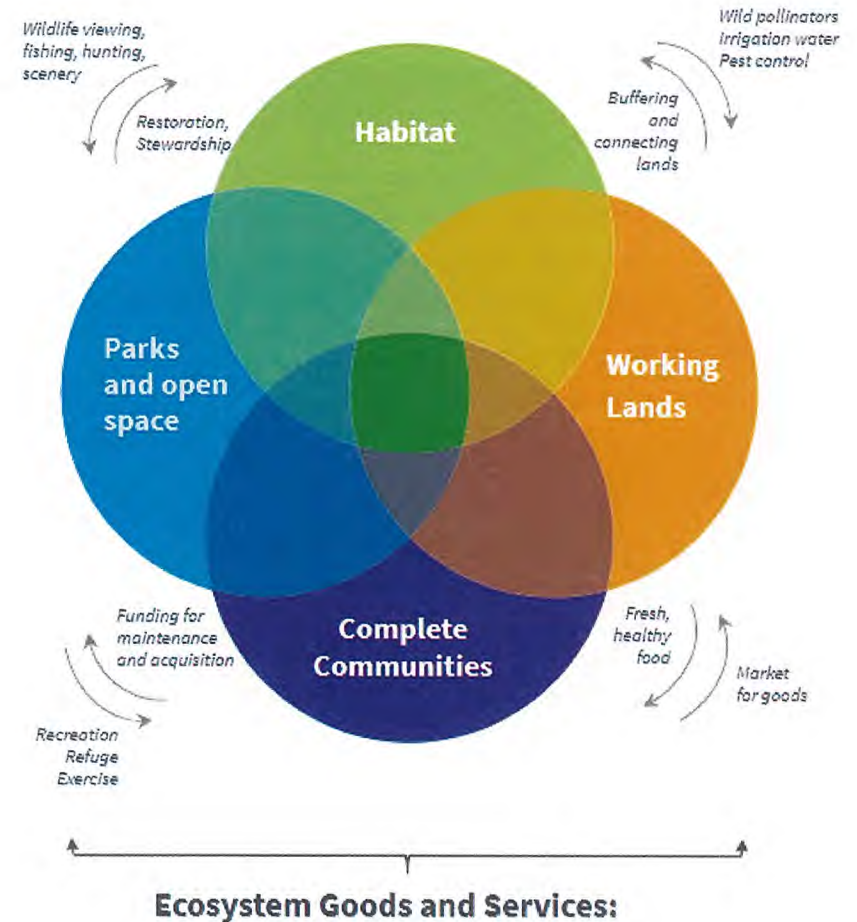
Who are the target users?

What are the use cases?



What is in a **Greenprint**?

- Multiple-benefits of open space
- Data and narrative
- Specific to local values and needs



What is in the San Francisco Bay Area **Greenprint**?



FOOD PRODUCTION



CARBON STORAGE



OUTDOOR RECREATION



WATER YIELD



WATER QUALITY



WATER HAZARD REDUCTION



COMPENSATORY MITIGATION



PRIORITIZED HABITATS



HABITAT CONNECTIVITY



climate change



policies



URBAN GREENING

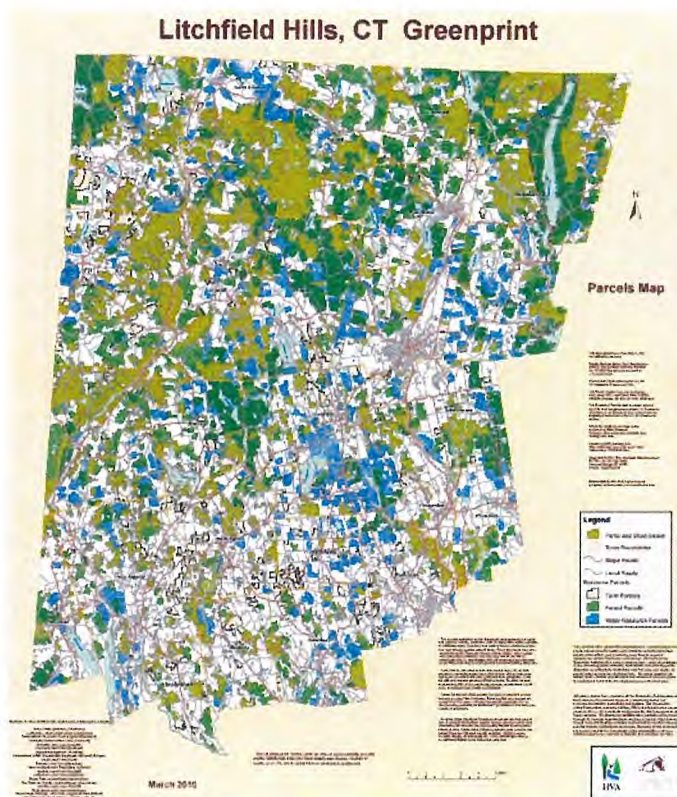
What would a **Greenprint** in Maui County look like?

Questions to consider

- What is the goal of the Greenprint and will the product support the goal?
- What are the decisions confronting users and will the product support them in making those decisions?
- Who needs to support or buy into the Greenprint?

What does a **Greenprint** look like?

Map of discrete priorities for specific resources and actions



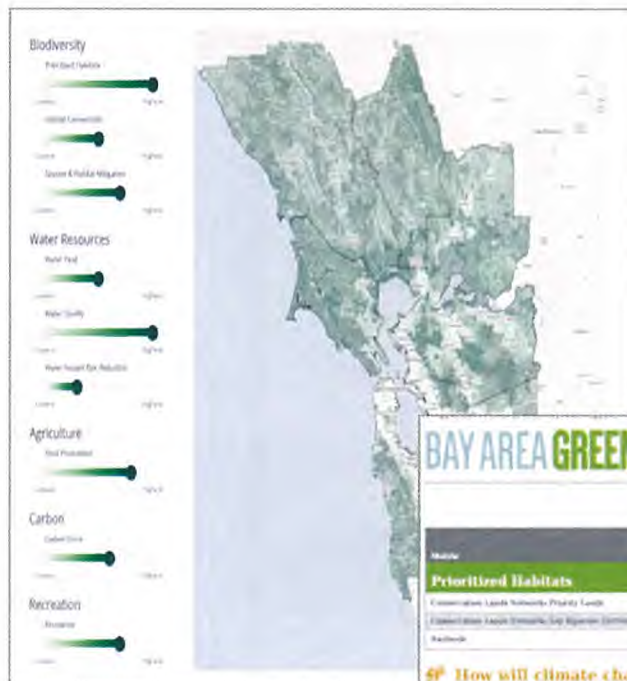
What does a **Greenprint** look like?

Identified priorities for multiple resources



What does a Greenprint look like?

User-defined priorities + reporting



FOOD PRODUCTION	CARBON STORAGE	OUTDOOR RECREATION
WATER YIELD	WATER QUALITY	WATER HAZARD REDUCTION
COMPENSATORY MITIGATION	PRIORITIZED HABITATS	HABITAT CONNECTIVITY

BAY AREA GREENPRINT

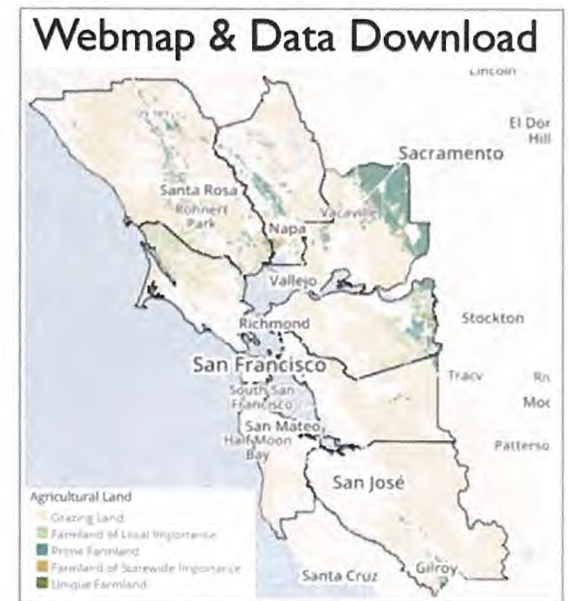
Albany

Measure	Value	Goal	% of Range	% Area Contributing to Current Total	Amount Prioritized	% Area Contributing to that Area Total	Amount Prioritized by Value	% of Prioritized
Prioritized Habitats								
Conservation Lands Network Priority Lands	11 acres	1%	0%	63,671	4%	1,000,000	0%	
Conservation Lands Network Priority Lands	3 acres	0%	0%	80	0%	100	0%	
Public Lands	7 acres	1%	0%	17,333	4%	24,752	46%	

How will climate change impact biodiversity and habitat?

Threats: It is assumed that habitats prioritized for conservation are not present in those locations into the future. If climate change results in projected climate outside of the range of suitable climate for the vegetation types in that area, then the species and habitats in those prioritized lands may be more vulnerable to climate change. In your area, some of prioritized habitats have vegetation types likely to be at the margins of suitable climate.

Opportunities: Some species and vegetation in prioritized landscapes are likely to persist despite climate change. Climate change may not result in climate stress to all vegetation types because the projected changes are still within the range of suitable climate for those vegetation types. Also, some areas may have a land management approach that make those vegetation types more resilient to potential climate stress. In your area, all of prioritized habitats have vegetation types that are likely to have suitable climate in the future. And this area of interest is lower than average resilience for the Bay Area.



What does a **Greenprint** look like?

Future scenario assessment and reporting



Energy use



Emissions



Household costs



Water use



Transportation



Carbon



Habitat



Water resources



Agriculture

What if...?





Use Case Question:

- How can the Bay Area Greenprint help assess the benefits of investing in conservation areas?

About ABAG

Communities & Environment

Service Programs



QUICK LINKS

[PCA Home](#)

[Program Background](#)

[PCA Project Funding](#)

[PCA Designations & Criteria](#)

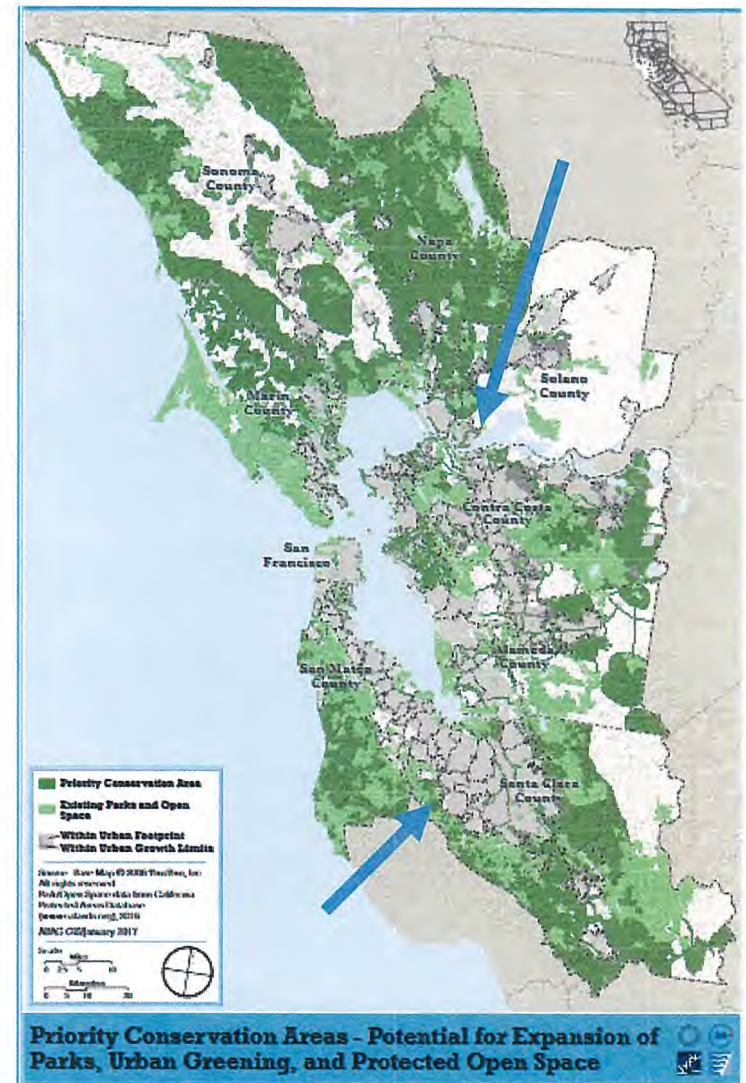
[PCA Maps](#)

Priority Conservation Areas

**Natural Landscapes, Agricultural Lands, Urban Greening
and Regional Recreation**

Priority Conservation Area Program

Regional agencies will use the Greenprint to approve PCA designations and funding requests from local governments to fund conservation investments



BAY AREA GREENPRINT

Comparison of Tri City County Cooperative Planning Area and Lexington Hills PCA



BAY AREA GREENPRINT

Lexington Hills PCA

Overview

Key Facts: 10,204 acres

Counties: Santa Clara

Watersheds: Guadalupe River-Frontal San Francisco Bay Estuaries, Saratoga Creek-Frontal San Francisco Bay Estuaries

Priority Conservation Areas: 2 PCAs (see online report)

Cities: Los Gatos

Includes areas inside:

Urban Growth Boundaries	No
City Limits	Yes
Urban Service Areas	Yes

Protection & Threats

Bay Area Protected Areas Database

9% owned by recreation/conservation organization
4% protected by conservation easement

Policy Protections

Development on Steep Slopes (Policy R-GD 29)



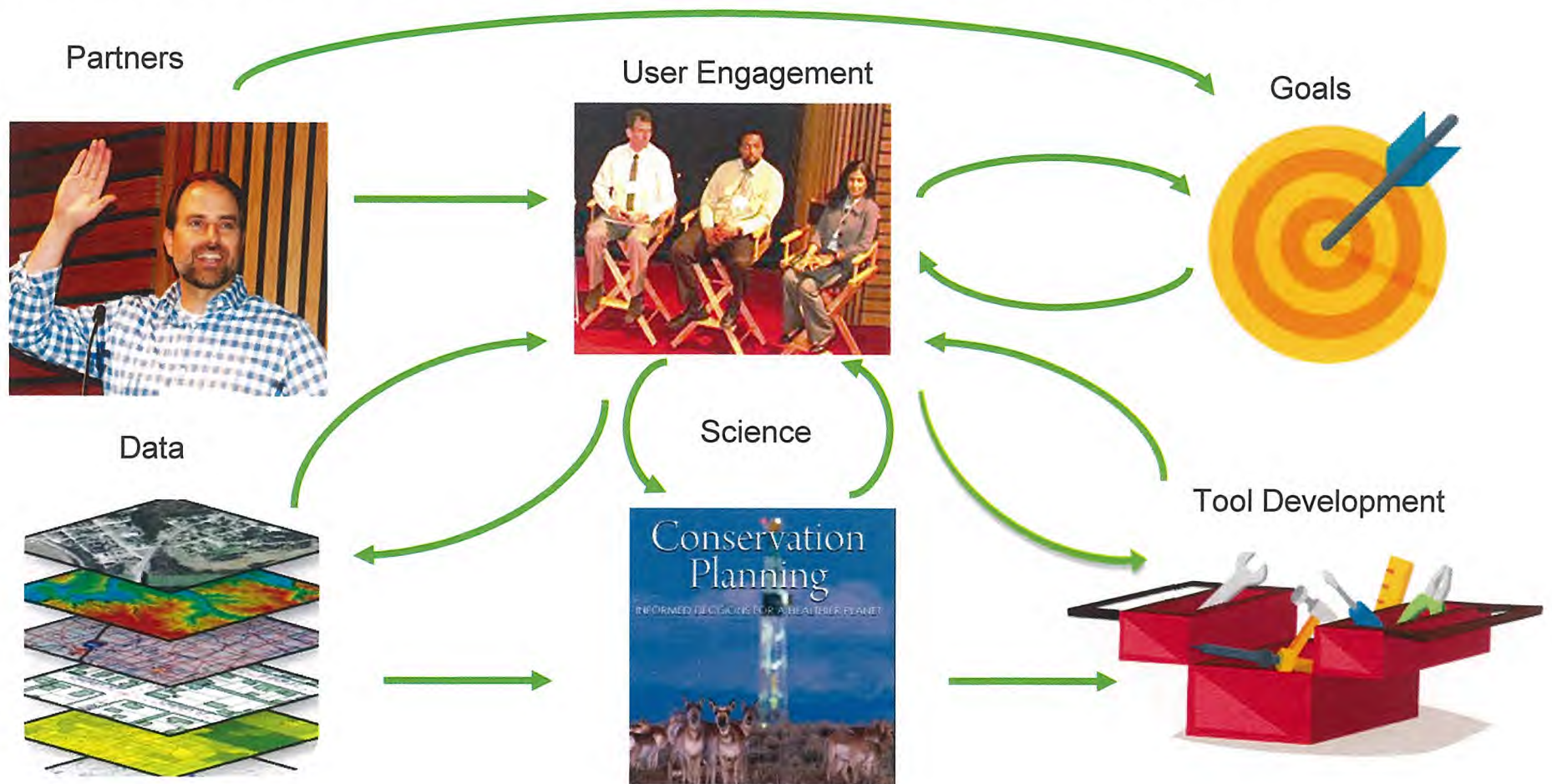
Did you know?

675 acres of open space in this area are under development pressure. Developing on open space in this area may impact important environmental resources. Policies may help reduce these pressures.

Tri City County Cooperative Planning Area PCA

Metric	Value	Unit	% of Shape	% Area Contributes to	Amount Protected				
Food Production									
Prime Farmland	0	acres	^						
Farmland of Statewide Importance	0	acres	^						
Unique Farmland	18	acres	^						
Farmland of Local Importance	0	acres	^						
Suitable Grazing Land	14,054	acres	8						
Prioritized Habitats									
	<input checked="" type="checkbox"/> Tri City County Cooperative Planning Area PCA			Difference			<input type="checkbox"/> Lexington Hills PCA		
Metric	Value	Unit	% of Shape	Value	Unit	% of Shape	Value	Unit	% of Shape
Conservation Lands Network: Priority Lands	10,930	acres	64 %	5,345	acres	9 %	5,585	acres	55 %
Conservation Lands Network: Key Riparian Corridor	0	miles		6	miles		6	miles	
Baylands	0	acres	< 1 %	0	acres	< 1 %	0	acres	< 1 %
Resilience to Climate Change	higher than average	score			score		lower than average	score	

How did we build the **Greenprint** in the San Francisco Bay Area?



Capacity Needed for **Greenprint** Development

Stakeholder Outreach

The Nature Conservancy
Greenbelt Alliance
American Farmland Trust
Bay Area Open Space Council
GreenInfo Network

GIS Science and Planning

The Nature Conservancy
Greenbelt Alliance
Bay Area Open Space Council

Tool Development

GreenInfo Network

Information Flow

External → Internal

Information Flow

External ↔ Internal

Information Flow

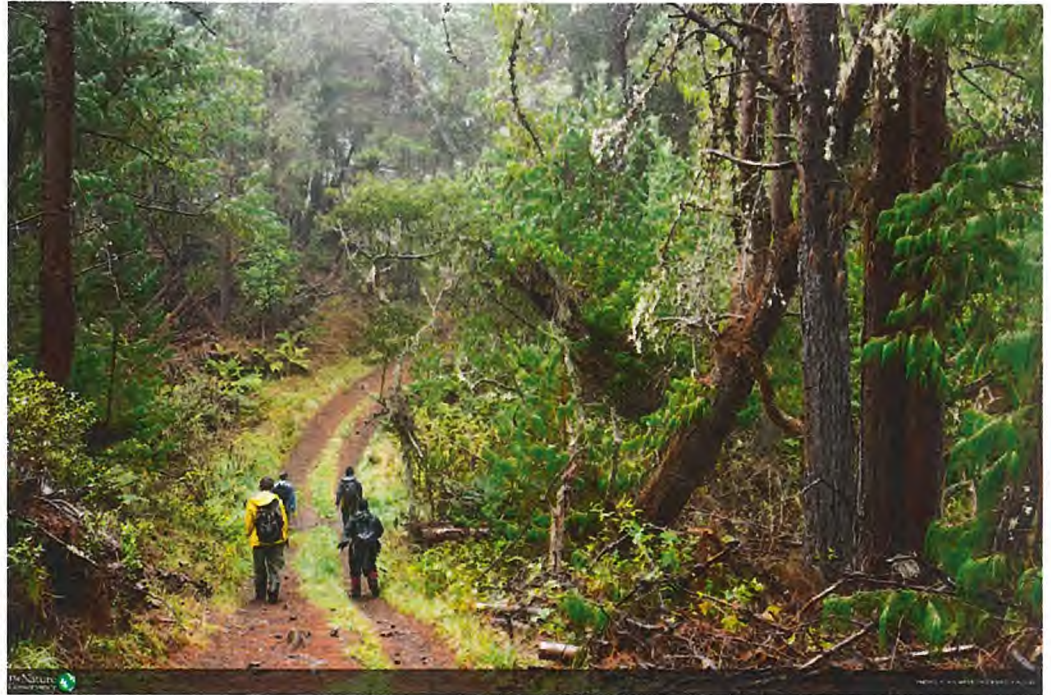
Internal

What will the **Greenprint** in Maui County look like?



Summary of questions for developing a **Greenprint**

- Why a Greenprint?
- What is the goal?
- Who are the users?
- What values and data will be in it?
- What will it look like (e.g. tool, map)?



Thank You!

Bay Area Greenprint Partners:



Funders:

