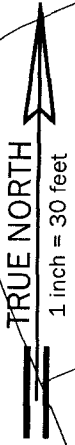
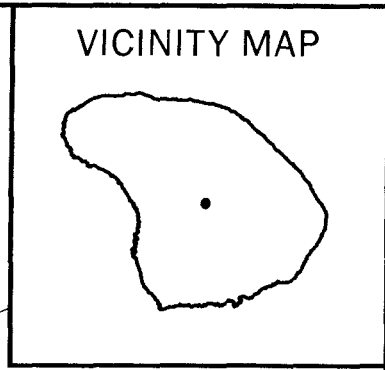
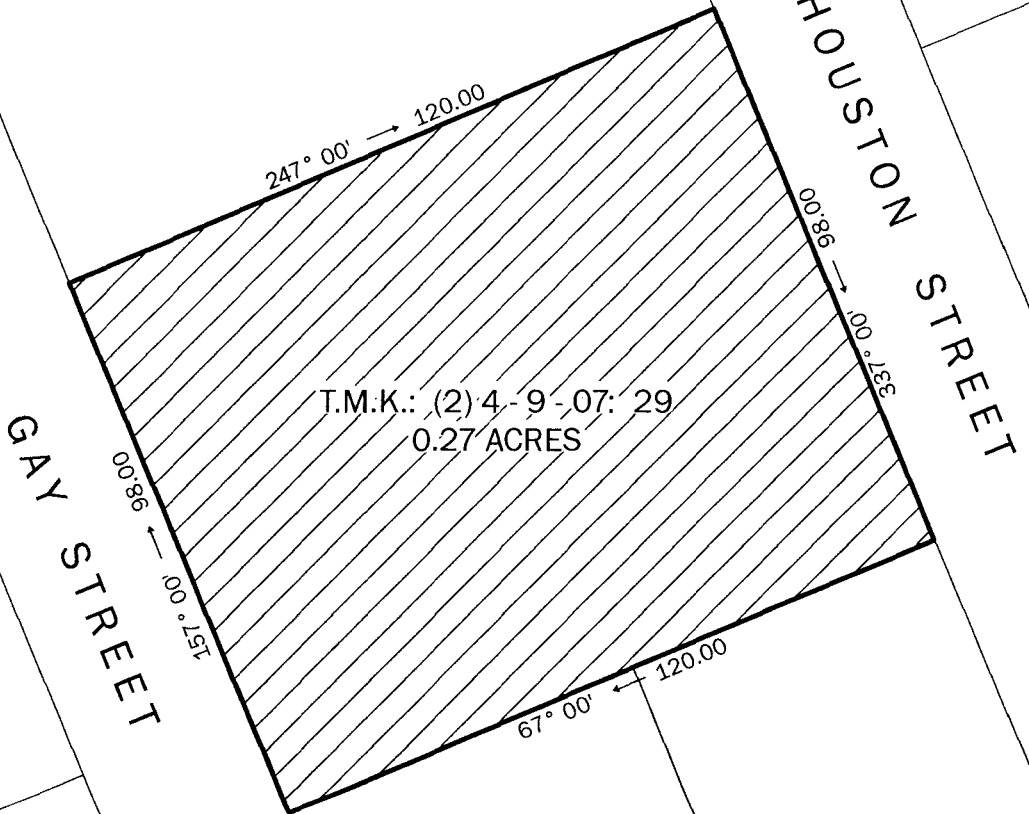


RECEIVED AT LU MEETING ON 11/8/18
Planning Director



T.M.K.: (2) 4 - 9 - 07: 28

To
4th
Street



GAY STREET

HOUSTON STREET

T.M.K.: (2) 4 - 9 - 07: 29
0.27 ACRES

T.M.K.: (2) 4 - 9 - 07: 31

To
4th
Street

T.M.K.: (2) 4 - 9 - 07: 32

TAX MAP KEY

T.M.K.: (2) 4 - 9 - 07: 29

AREA

"EXHIBIT B"

0.27 ACRES

COMMUNITY PLAN MAP NO. CP-208

COMMUNITY PLAN AMENDMENT - LANAI CITY, LANAI, HAWAII

FROM PUBLIC/QUASI-PUBLIC (P/QP) TO SINGLE - FAMILY (SF)