

ORDINANCE NO. _____

BILL NO. 41 (2019)

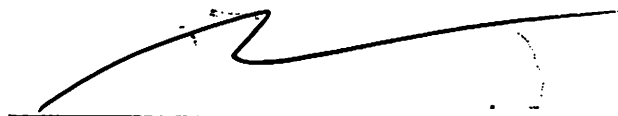
A BILL FOR AN ORDINANCE TO AMEND THE MAKAWAO-PUKALANI-KULA
COMMUNITY PLAN AND LAND USE MAP FROM AGRICULTURE
TO PUBLIC/QUASI-PUBLIC FOR PROPERTY SITUATED AT
MAKAWAO, MAUI, HAWAII, TAX MAP KEY (2) 2-4-002:006 (POR.)

BE IT ORDAINED BY THE PEOPLE OF THE COUNTY OF MAUI:

SECTION 1. Pursuant to Chapter 2.80B, Maui County Code, the Makawao-Pukalani-Kula Community Plan and Land Use Map is hereby amended from Agriculture to Public/Quasi-Public for that certain parcel of land situated at Makawao, Maui, Hawaii, and identified for real property tax purposes as portion of tax map key (2) 2-4-002:006, comprised of approximately 4.306 acres, and more particularly described in Exhibit "A", attached hereto and made a part hereof, and in Community Plan Map No. 618, attached hereto as Exhibit "B" and made a part hereof.

SECTION 2. This ordinance shall take effect upon its approval.

APPROVED AS TO FORM
AND LEGALITY:



MICHAEL J. HOPPER
Deputy Corporation Counsel
LF2019-0444
2019-04-16 Ordinance CPA Hui No'eau

LAND DESCRIPTION

Tax Map Key (2) 2-4-002:006(Portion)

Land situated between Baldwin Avenue and Kaluanui Road at Haliimaile, Hamakuapoko, Makawao, Island and County of Maui, State of Hawaii.


Being portion of Lot 1 of Maui Pineapple Co., Ltd Lease, L.U.C.A. File No. 2.393, being a portion of Royal Patent 7512, Land Commission Award 11,216, Apana 27 to Kehaunohi.

Beginning at a point at the northeast corner of this parcel of land, along the south side of Kaluanui Road coordinates of said point of beginning referred to Government Survey Triangulation Station "PIIHOLO" being 7,505.10 feet North and 4,304.59 feet West and running by azimuths measured clockwise from true South (meridian of said "PIIHOLO"),

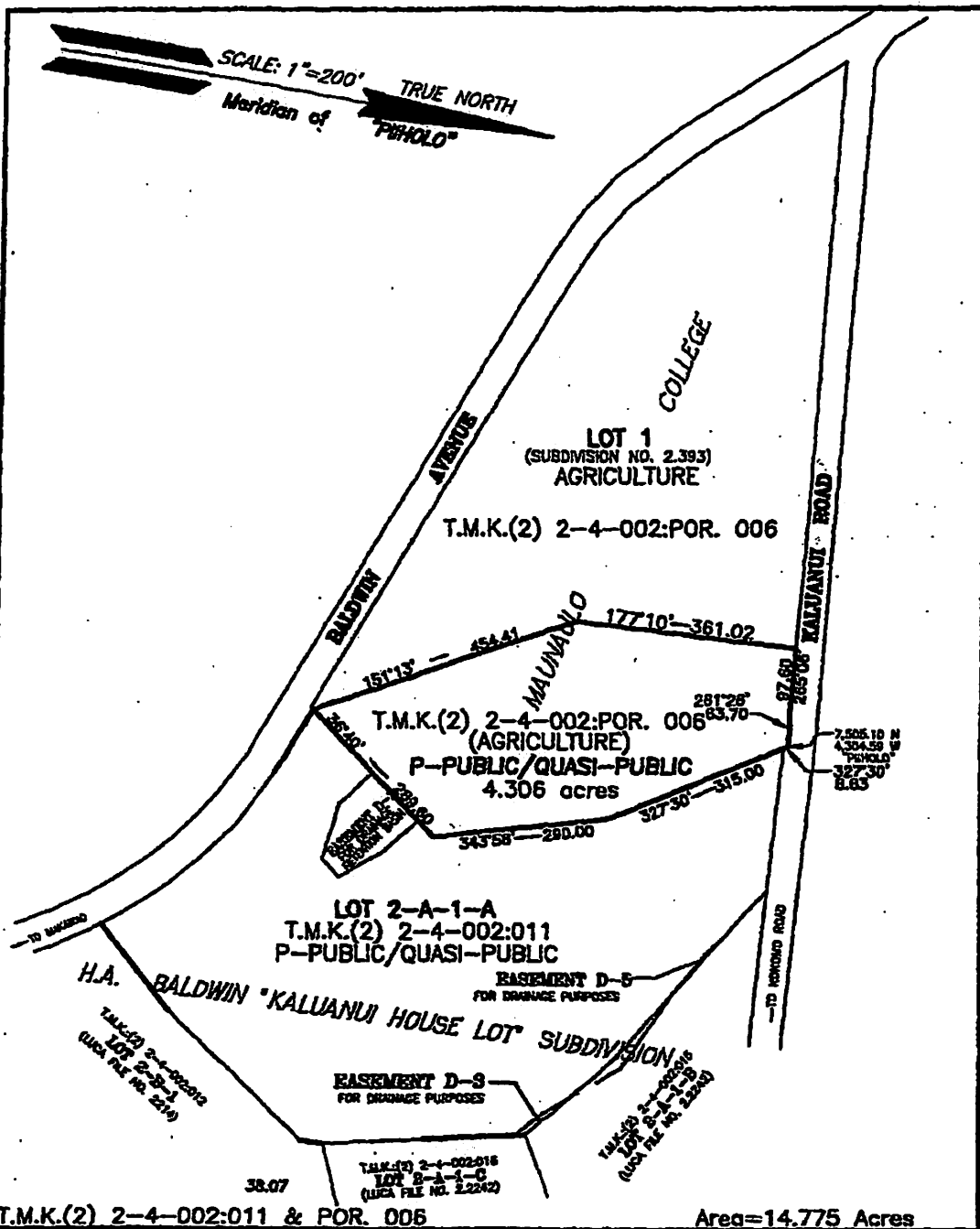
1. 327° 30' 8.63 feet along the southerly side of Kaluanui Road to a ½ inch pipe; thence,
2. 327° 30' 315.00 feet along Lot 2-A-1-B of H.A. Baldwin "Kaluanui" House Lot Subdivision, Subdivision File No. 2.2242 to a ½ inch pipe; thence,
3. 343° 58' 290.00 feet along the same to a ½ inch pipe; thence,
4. 36° 40' 289.60 feet along the same to a ½ inch pipe to a ½ inch pipe; thence,
5. 151° 13' 454.41 feet along portion of Lot 1 of Maui Pineapple Co., Ltd Lease, L.U.C.A. File 2.393 to a point, thence,
6. 177° 10' 361.02 feet along the remainder of Lot 1 of Maui Pineapple Co., Ltd. Lease, L.U.C.A. File No. 2.393 to a point; thence,
7. 265° 06' 97.60 feet along the south side of Kaluanui Road to the point of beginning and containing an area of 4.306 acres, more or less.

Note: This metes and bounds description has been prepared for change in Zoning and Community Plan Amendment purposes only.

This work was prepared by me
or under my direct supervision.
VALERA, INC.


Edgardo V. Valera *Edg V Valera*
Licensed Professional Land Surveyor
State of Hawaii Certificate No. 5076
End of description.
8178CPKaluanui





T.M.K.(2) 2-4-002:011 & POR. 006 Area=14.775 Acres

COMMUNITY PLAN MAP NO. 618

COMMUNITY PLAN AMENDMENT—MAKAWAO, MAUI, HAWAII FROM AG-AGRICULTURE TO P-PUBLIC/QUASI-PUBLIC DISTRICT

APPROVED: _____ COUNTY CLERK DATE	PUBLIC HEARING: ADOPTED — COUNCIL: ADOPTED — MAYOR: ORDINANCE:
APPROVED: _____ PLANNING DIRECTOR DATE	DATE: _____ SCALE: 1" = 200'

OFFICE OF THE COUNTY CLERK
 200 HIGH STREET, WAILUKU, MAUI, HAWAII 96793 CP—

DIGEST

ORDINANCE NO. _____
BILL NO. 41 (2019)

A BILL FOR AN ORDINANCE TO AMEND THE MAKAWAO-PUKALANI-KULA
COMMUNITY PLAN AND LAND USE MAP FROM AGRICULTURE
TO PUBLIC/QUASI-PUBLIC FOR PROPERTY SITUATED AT
MAKAWAO, MAUI, HAWAII, TAX MAP KEY (2) 2-4-002:006 (POR.)

This bill proposes to amend the Makawao-Pukalani-Kula Community Plan and Land Use Map from Agriculture to Public/Quasi-Public for approximately 4.306 acres situated at Makawao, Maui, Hawaii, and identified for real property tax purposes as a portion of TMK: (2) 2-4-002:006, for the Hui Noeau.

I, JOSIAH K. NISHITA, County Clerk of the County of Maui, State of Hawaii, DO HEREBY CERTIFY that the foregoing BILL NO. 41 (2019) was passed on First Reading by the Council of the County of Maui, State of Hawaii, on the 26th day of July, 2019, by the following vote:

AYES: Councilmembers Natalie A. Kama, Alice L. Lee, Michael J. Molina, Tamara A. M. Paltin, Shane M. Sinenci, Yuki Lei K. Sugimura, Vice-Chair Keani N. W. Rawlins-Fernandez, and Chair Kelly T. King.

NOES: None.

EXCUSED: Councilmember G. Riki Hokama.

DATED at Wailuku, Maui, Hawaii, this 2nd of August, 2019.



JOSIAH K. NISHITA, COUNTY CLERK
COUNTY OF MAUI, STATE OF HAWAII

Copies of the foregoing Bill, in full, are on file in the Office of the County Clerk, County of Maui, for use and examination by the public.