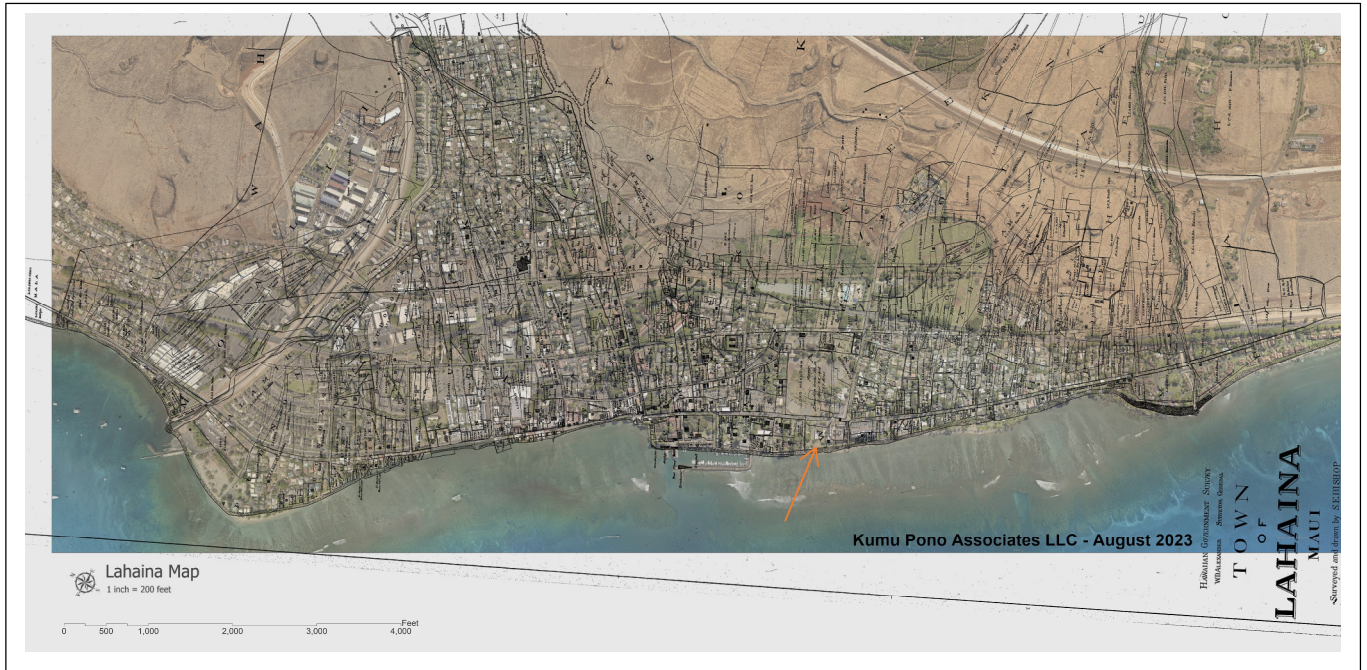


**‘Āina Lei Ali‘i ‘o Waine‘e—Moku‘ula, Mokuhinia and Hale Piula
(All Comprise a Wahi Pana or Traditional Cultural Property with Many
Contributing Features that Should be Treated as One Wahi Pana)**

**The Land is not Sacred because the Sites are There.
The Sites are there because the Land is Sacred!**



**“Town of Lahaina, Maui” Registered Map No. 1262 (S. E. Bishop Survey, 1884);
Overlaid on Google Earth View of the Lāhainā Town Region. Waine‘e-Hale Piula
(Kamehameha Iki Park) Identified with Arrow.**

**A Cultural-Historical Synthesis in Support of
“The Bill For An Ordinance Amending Section 3.38.020, Maui County Code”
(Nov. 2, 2023)**

Historical narratives written by both Native Hawaiians and foreigners describe the significance of Waine‘e in ceremonial, political and daily life of the Hawaiian people. While from 1837 to 1845, Waine‘e and Lele, in the district of Lāhainā (also written Lāhaina) was home of the king of the Hawaiian Islands and also the capital of the kingdom, Waine‘e also served as a traditional residence of the highest and most sacred ali‘i of Maui. The area of Moku‘ula, Loko Mokuhinia and what came to be known as Hale Piula (site of “Kamehameha Iki Park”) served as the residence of Piilani in the sixteenth century (see Kamakau 1991:49, 1961:342). Most of the makai section of Waine‘e was covered with loko i‘a (fishponds), lo‘i kalo (irrigated taro pond fields), pūnāwai (springs), ‘auwai (water channels for irrigation), pā (walled enclosures), pā ilina (burial sites – including those of the highest and most sacred ali‘i), hale (house sites), and many other features.

Notably the small island of Moku'ula, located in Loko Mokuhinia, was a sacred place protected by high kapu. It was also the residence of the goddess Kihawahine who traditionally swam through the surrounding fishpond of Mokuhinia—which extended to the shore line around Hale Piula—in the form of a mo'o (a lizard/water-form god) giant lizard (see Kamakau 1964:85) Kihawahine was a deified chiefess, the daughter of Pi'ilani, an ali'i of the sixteenth century (Fornander 1916-1917 Vol. IV, Part II:242).

Kamehameha I, upon his conquest of Maui in the late 1700s, adopted Kihawahine as one of his goddesses, and sons and successors, Kamehameha II and III—who also descended from the Pi'ilani lineage through their mother, Keōpūolani. It was through this relationship that Kihawahine was also honored as a guardian of Kamehameha's, and the consolidation of Hawaiian rule (see Kamakau 1964:54).

Moku'ula, Mausoleum of Ali'i nui

One facet of the Waine'e complex, is that Moku'ula which sat in Loko Mokuhinia which also took in the area around Hale Piula is that the small island served as the mausoleum of Chiefess Nāhi'ena'ena (sister of Kamehameha II & III) following her death in 1837 (Kamakau 1961:342). Stricken with grief for his sister, Kamehameha III resided next to Nāhi'ena'ena's burial site for eight years (ibid.). Several other notable ali'i were also buried at Moku'ula. Local informants have also shared that two of Kamehameha III's own children by Hakaleleponi Kalam, were also buried for a time at Moku'ula.



“Lahaina Village Water Works” (Registered Map No. 500). Traditional Complex of Moku'ula, Loko Mokuhinia, Hale Piula Outlined in Box (No date).

Hale Piula – Lahaina Armory Park – Kamehameha Iki Park

King Kamehameha III's royal residential complex in Lahaina, Maui, includes the wahi pana (storied and sacred landscape) of Moku'ula, Loko Mokuhinia, Hale Piula and other contributing features which include both tangible and intangible cultural resources. While for the last 170 years, the practice settler colonialists (under the guise of religious, political and economic domination) has been to identify "dots on a map," creating artificial boundaries to facilitate extraction or resources, and the erasure of the Hawaiian footprint in the honua ola (living environment). This approach, made it easy for the historic colonizers to dismiss the Native Hawaiian world view of the biocultural landscape, which existed as part of an integrated system, where all parts of the environment—from the heavens to the depth of the sea—were identified as the kinolau (body-forms of gods and goddesses), and valued as elder family members which sustained the people. As has been previously concluded by earlier researchers and 'ohana of the Lāhainā District, Hale Piula is a significant contributing feature to the wahi pana (storied and sacred landscape of Waive'e and the Lele/Lāhainā Region; and stands out as a wahi pana of the Hawaiian Islands.



**Lahaina Old Palace & Kukui Trees (Hale Piula)
(Monsarrat Collection, Hawaii State Archives # PPWD-10-12-004**

**Historic Land Tenure – How the County Secured Title
to Moku'ula, Loko Mokuhinia, Hale Piula**

Ko Kamehameha 3				Ko Kamakahonu			
Na Aina	Ahupuaa	Kalana	Mokupuni	Na Aina	Ahupuaa	Kalana	Mokupuni

—				Wainee	Ahupuaa	Lahaina	Maui
---	--	--	--	--------	---------	---------	------

Page 200

Page 201

Ko Kamehameha 3				No Ke Aupuni			
Inoa o na Aina	Ahupuaa	Kalana	Mokupuni	Inoa o na Aina	Ahupuaa	Kalana	Mokupuni

Wainee 1 & 2	Ahupuaa	Lahaina	Maui	Keahua	Ahupuaa	Kula	Maui
--------------	---------	---------	------	--------	---------	------	------

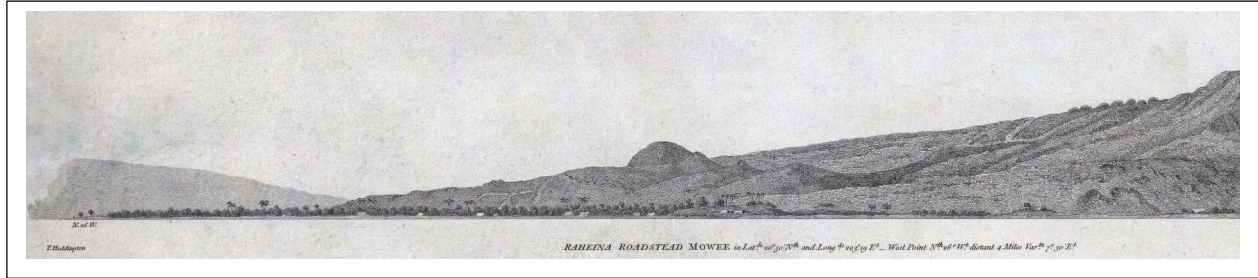


**Loko Mokuhinia, Moku'ula & Wainee Church (Ambrotype ca. 1855)
(Online Collection)**

While Kamehameha III, and his successors held title to the ahupua'a of Wainee, shortly after Sanford B. Dole, Lorrin Thurston and their collaborators stole the Kingdom from Queen Lili'uokalani and the lāhui kānaka (Hawaiian people), they initiated a policy of leasing and/or selling large tracts of Crown and Government lands. This was the case with the lands of Wainee that were retained from kuleana holdings, and is the source of Maui County's title to Moku'ula, Loko Mokuhinia, and Hale Piula ("Malu 'Ulu o Lele" and "Kamehameha Iki" parks).

Claims for Kuleana (Property Rights) in Waive'e

A review of documents recorded as a part of the Māhele, identifies at least 55 claims for kuleana in the ahupua'a of Waive'e. The Māhele documents describe a rich landscape, that sustained a large ali'i and maka'āinana population for centuries. Famed for the extensive groves of 'ulu (breadfruit trees) which sheltered the land and contributed to the support of the those who lived upon it. The predominance of 'ulu, is commemorated in the epithet "Ka malu 'ulu o Lele" (The sheltering breadfruit groves of Lele).



**“Raheina [Lahaina] Roadstead Mowee”
 Depicting the ‘Ulu-Shaded Nearshore Region with House Sites
 (1798 by T. Heddington, Midshipman with George Vancouver)**

The claims of the Māhele identify some of the families who were traditional residents of Waive'e, a number of whom are the ancestors of current native residents of the district. The claims include the following individuals and sources of documentation.

Bk.	Vol.	Pg.	Helu	Alpha	Claimant	Ili	Ahp.	Dist.
NR	3	434	[No Helu]		Kapuaiwa, Lot (Released by Wm. Lunalilo)		Waivee	Lahaina
NT	2	68	61		Ulumaheihei		Waivee	Lahaina
NT	2	70	61		Ulumaheihei		Waivee	Lahaina
NT	2	69	61		Ulumaheihei		Waivee	Lahaina
NT	2	69	61		Ulumaheihei		Waivee	Lahaina
MA	1	186	61		Ulumaheihei		Waivee	Lahaina
FR	1	73	61		Ulumaheihei (see page 66)		Waivee	Lahaina
NR	1	66	61		Ulumaheihei		Waivee	Lahaina
NR	1	67	61		Ulumaheihei		Waivee	Lahaina
NT	2	66	241		Burrows, Solomona D. (Helu 241 B)		Waivee	Lahaina
NT	2	67	241		Burrows, Solomona D.		Waivee	Lahaina
MA	1	273	241		Burrows, Soloman D.		Waivee	Lahaina
MA	1	274	241		Burrows, Soloman D.		Waivee	Lahaina
MA	1	274	241		Burrows, Soloman D.		Waivee	Lahaina

Bk.	Vol.	Pg.	Helu	Alpha	Claimant	Ili	Ahp.	Dist.
					Adjudication			
FR	1	157	241		Burrows, S.D.		Wainee	Lahaina
FT	1	136	241		Burrows, S.D.		Wainee	Lahaina
FR	1	164	241		Burrows, Solomon		Wainee	Lahaina
NT	10	122	277		Kanaina, Chas.		Wainee	Lahaina
NR	2	43	277		Lunalilo, Wm. C.		Wainee	Lahaina
NR	2	43	277		Lunalilo, Wm. C.	Mokuhinia	Wainee	Lahaina
NT	2	86	302		Kuakini		Wainee	Lahaina
NT	10	156	302		Kuakini, J.A.		Wainee	Lahaina
NR	2	69	302		Kuakini, J.A.	Mokuhinia	Wainee	Lahaina
NR	2	70	302		Kuakini, J.A.	Mokuhinia	Wainee	Lahaina
MA	10	584	302		Kuakini, J.A.		Wainee	Lahaina
NT	2	96	321		Kuakini (see p. 114)	Mokuhinia	Wainee	Lahaina
NT	2	94	321		Kuakini (see p. 96)	Mokuhinia	Wainee	Lahaina
NR	2	82	322		Kalaipaehala		Wainee	Lahaina
FT	15	44	322		Kaipo		Wainee	Lahaina
MA	9	190	322		Kaipo		Wainee	Lahaina
MA	9	189	322		Kaipo		Wainee	Lahaina
NR	2	119	381		Nalehu	Mokuhinia	Wainee	Lahaina
MA	2	1325	484		Kaiheekai		Wainee	Lahaina
NT	10	119	526		Kalaimoku (Contested, Helu 302)	Mokuhinia	Wainee	Lahaina
NT	10	120	526		Kalaimoku	Mokuhinia	Wainee	Lahaina
MA	3	56	782		Birch, Alexander M.		Wainee	Lahaina
FT	3	295	782		Birch, A.		Wainee	Lahaina
NR	6	249	3425	B	Alu		Wainee	Lahaina
FT	15	30	3425	B	Alu		Wainee	Lahaina
MA	9	96	3425	B	Alu		Wainee	Lahaina
MA	9	95	3425	B	Alu		Wainee	Lahaina
MA	9	96	3425	B	Alu		Wainee	Lahaina
NT	5	20	3542		Kalua		Wainee iki	Lahaina
NR	3	604	4452		Kalama, Hakaleleponi	Mokuhinia	Wainee	Lahaina
NR	6	177	4533		Malo		Wainee	Lahaina
FT	7	17	4533		Malo		Wainee	Lahaina
MA	9	29	4533		Malo		Wainee 1 & 2	Lahaina
FT	7	32	4878	N	Kaekae		Wainee	Lahaina
MA	9	227	4878	N	Kaekae		Wainee	Lahaina
FT	7	33	4878	O	Olala		Wainee nui	Lahaina
MA	10	104	4878	O	Olala		Wainee 2	Lahaina
MA	10	103	4878	O	Olala		Wainee 2	Lahaina
NT	5	51	4878	EE	Makaiole (w.)		Wainee	Lahaina
NT	5	50	4878	EE	Makaiole (w.)		Wainee	Lahaina

Bk.	Vol.	Pg.	Helu	Alpha	Claimant	Ili	Ahp.	Dist.
FT	7	40	4878	EE	Makaiole		Wainee	Lahaina
MA	10	388	4878	EE	Makaiole		Wainee	Lahaina
MA	10	387	4878	EE	Makaiole		Wainee	Lahaina
MA	10	386	4878	EE	Makaiole		Wainee	Lahaina
NR	6	216	4878	FF	Poopuu		Wainee	Lahaina
MA	9	11	4878	FF	Poopuu		Wainee	Lahaina
NR	6	246	5207	B	Kalaipaihala		Wainee	Lahaina
FT	7	15	5207	B	Kalaipaihala		Wainee	Lahaina
FT	15	1	5207	B	Kalaipaihala		Wainee	Lahaina
MA	10	508	5207	B	Kalaipaihala, R.		Wainee 1	Lahaina
MA	10	508	5207	B	Kalaipaihala, R.		Wainee 1	Lahaina
MA	10	508	5207	B	Kalaipaihala, R.		Wainee 1	Lahaina
MA	10	509	5207	B	Kalaipaihala, R.		Wainee 1	Lahaina
NR	5	31	5247		Kuakini, J.A.		Wainee	Lahaina
NR	6	355	6218		Mauae		Wainee	Lahaina
NT	5	68	6218		Mauae		Wainee nui	Lahaina
NT	5	69	6218		Mauae		Wainee nui	Lahaina
FT	7	187	6218		Mauae		Wainee nui	Lahaina
MA	10	41	6218		Mauae (w.)		Wainee nui	Lahaina
MA	10		6218		Mauae (w.)		Wainee nui	Lahaina
MA	10	41	6218		Mauae (w.)		Wainee nui	Lahaina
NR	6	361	6388		Kuakamauna		Wainee	Lahaina
NR	6	385	6463		Kapu		Wainee nui	Lahaina
NT	5	61	6463		Kapu		Wainee nui	Lahaina
FT	7	178	6463		Kapu		Wainee nui	Lahaina
MA	10	206	6463		Kapu		Wainee nui	Lahaina
MA	10	207	6463		Kapu		Wainee nui	Lahaina
FT	7	165	6481		Kailimeeau (w)		Wainee nui	Lahaina
NR	6	390	6481		Kailimeeau		Wainee	Lahaina
NT	5	48	6481		Kailimeeau		Wainee nui	Lahaina
MA	10	315	6784		Naai		Wainee	Lahaina
MA	9	225	6784		Naai		Wainee	Lahaina
NR	6	424	6784		Naai		Wainee nui	Lahaina
FT	15	43	6784		Naai		Wainee nui	Lahaina
FT	7	48	6784		Naai		Wainee nui	Lahaina
MA	9	188	6784		Naai		Wainee nui	Lahaina
NR	6	424	6785		Kaluahinenui		Wainee nui	Lahaina
FT	7	56	6785		Kaluahinenui		Wainee nui	Lahaina
MA	9	5	6785		Kaluahinenui		Wainee nui	Lahaina
NR	6	424	6786		Kamohomoho		Wainee nui	Lahaina
FT	7	56	6786		Kamohomoho		Wainee nui	Lahaina
MA	9	3	6786		Kamohomoho		Wainee nui	Lahaina
NR	6	424	6787		Hanaumua		Waineenui	Lahaina

Bk.	Vol.	Pg.	Helu	Alpha	Claimant	Ili	Ahp.	Dist.
FT	7	56	6787		Hanaumua		Wainee nui	Lahaina
MA	9	4	6787		Hanaumua		Wainee nui	Lahaina
FT	7	60	6805		Hanaumua (see Helu 6787)		Wainee nui	Lahaina
FT	7	91	6906		Kekahuna		Waineenui	Lahaina
NR	6	427	6857		Nakaikuaana		Wainee	Lahaina
FT	7	64	6857		Nakaikuaana		Wainee	Lahaina
FT	15	53	6857		Nakaikuaana		Wainee	Lahaina
MA	9	297	6857		Nakaikuaana		Wainee	Lahaina
MA	9	229	6869		Kawaioaho [Kawaihoioahu]		Wainee	Lahaina
NR	6	428	6905		Kaneakua		Wainee	Lahaina
FT	7	91	6905		Kaneakua		Wainee	Lahaina
NR	6	428	6906		Kekahuna		Wainee	Lahaina
NR	6	429	6928		Mele		Wainee	Lahaina
FT	7	91	6928		Mele		Wainee nui	Lahaina
NR	6	435	7607		Kawaioni		Wainee	Lahaina
NR	6	438	7679		Kalaipaihala		Wainee	Lahaina
NT	10	245	7679		Kalaipaihala		Wainee	Lahaina
FT	7	16	7679 (5207 B)		Kalaipaihala		Wainee	Lahaina
NT	10	122	7712		Kekuanaoa, Mataio		Wainee	Lahaina
NR	5	446	7715		Kapuaiwa, Lota		Wainee Pa hale	Lahaina
NR	6	456	8135		Hihio		Wainee	Lahaina
NR	5	559	8427		Kapahukauila, H.	Mokuhinia	Wainee	Lahaina
NR	4	348	8559	B	Lunalilo, Wm. C.		Wainee	Lahaina
NT	10	187	8559	B	Lunalilo, Wm. C.		Wainee (Relinquished)	Lahaina
NT	13	248	8888		Kapu		Wainee	Lahaina
NR	6	507	9812		Kamano ma		Wainee	Lahaina
NR	6	508	9812		Kamano		Wainee	Lahaina
FT	7	96	9813		Namaka		Wainee nui	Lahaina
MA	9	69	9813		Namaka		Wainee	Lahaina
MA	10	396	9813		Namaka	Kaleipaihala	Wainee	Lahaina
MA	9	70	9813		Namaka		Wainee	Lahaina
MA	10	397	9813		Namaka	Kaleipaihala	Wainee	Lahaina
NR	6	508	9819		Hulaia		Wainee nui	Lahaina
MA	9	318	9822		Kaailau		Wainee	Lahaina
MA	9	317	9822		Kaailau		Wainee	Lahaina
FT	7	99	9820		Paele		Wainee nui	Lahaina
MA	9	138	9820		Paele		Wainee nui	Lahaina
NR	4	598	10806		Kamehameha III	Ap. 59. Mokuula	Wainee	Lahaina

Bk.	Vol.	Pg.	Helu	Alpha	Claimant	Ili	Ahp.	Dist.
NT	10	126	10806		Piikoi, I. (for Kamehameha III)		Wainee	Lahaina
NR	4	610	10896		Helekunihi		Wainee	Lahaina
FT	15	80	11153		Waihele		Wainee	Lahaina

Mana’o Koena:

Additional thoughts as to how “Lāhainā Town” and neighboring lands might achieve some level of restoration follow the horrific and deadly fires of August 8th, 2023 are touched on below. In the aftermath of the fires, there has been much attention paid to the Indian banyan tree planted on the sacred and royal ground of Lāhainā Town. We suggest that the legacy and biocultural landscape of Lāhainā spans perhaps 1,000 years of native history and reveals the unique adaptive and sustainable practices the Hawaiian people; the banyan has only limited time depth, and represents the foundational environment that allowed Lāhainā to burn.

One may recall that one of the poetical sayings that describes Lāhaina is— “Ka malu ‘ulu ‘o Lele” (The sheltering breadfruit groves of Lele). Contrary to the clamoring and media spotlight, the epithet is not “ka malu banyan ‘o Lele” (the sheltering Indian banyan of Lele).¹ The banyan itself was planted in 1873, at the instructions of William Owen Smith—one of the architects of the overthrow of the Hawaiian Monarchy—to commemorate the establishment of the Lāhainā Mission Station, and the stations’ dominance over the Hawaiian people. Twenty years later, Smith was a member of the anti-Hawaiian “Committee of Safety” that organized the overthrow of Queen Lili’uokalani on January 17, 1893. On that same day, Smith was appointed to the executive council (the new cabinet) of the Provisional Government of Hawaii under president Sanford B. Dole, and worked closely with Lorrin A. Thurston, his former law partner in driving towards annexation in 1898, and Hawai’i’s subsequent becoming a Territory of the United States.

“Restoration” of Lāhainā following the August 8th 2023 wildfires, and all that accompanies it—protection and stewardship of the sacred Waine’e Complex— *Kamehameha Iki Park (Hale Piula), Moku’ula and Loko Mokuhinia*—must be informed by native history, traditional and customary beliefs and practices customs, and with the knowledge of natives of Lāhainā. A major part of the restoration included wai (water), which is a finite resource of infinite value. The restoration of wai to the honua ola (living environment, and not extracting it simply as a commodity, needs to happen. There should be no room for the perpetuation of “disaster capitalism” which manifest itself in the actions of the foreign colonists, through corporate greed, and in the failure to steward our fragile biocultural landscape and history.

The tragedy being witnessed in Lāhainā rests on the shoulders of those in power who failed to take action after years of warnings (including countless wild fires that occurred yearly since the closing of Pioneer Mill in 1997). The ‘ike (knowledge) and ‘ōlelo (words) of kūpuna (ancestors and elders) carry a wisdom that is still relevant today. Their words draw attention to the foundational causes of the misfortunes that Native Hawaiians and Lāhainā are experiencing today. (For additional background on conditions that led to the Aug. 8th Lāhainā wildfires, see <https://www.kumu pono.com/lahaina/>.)

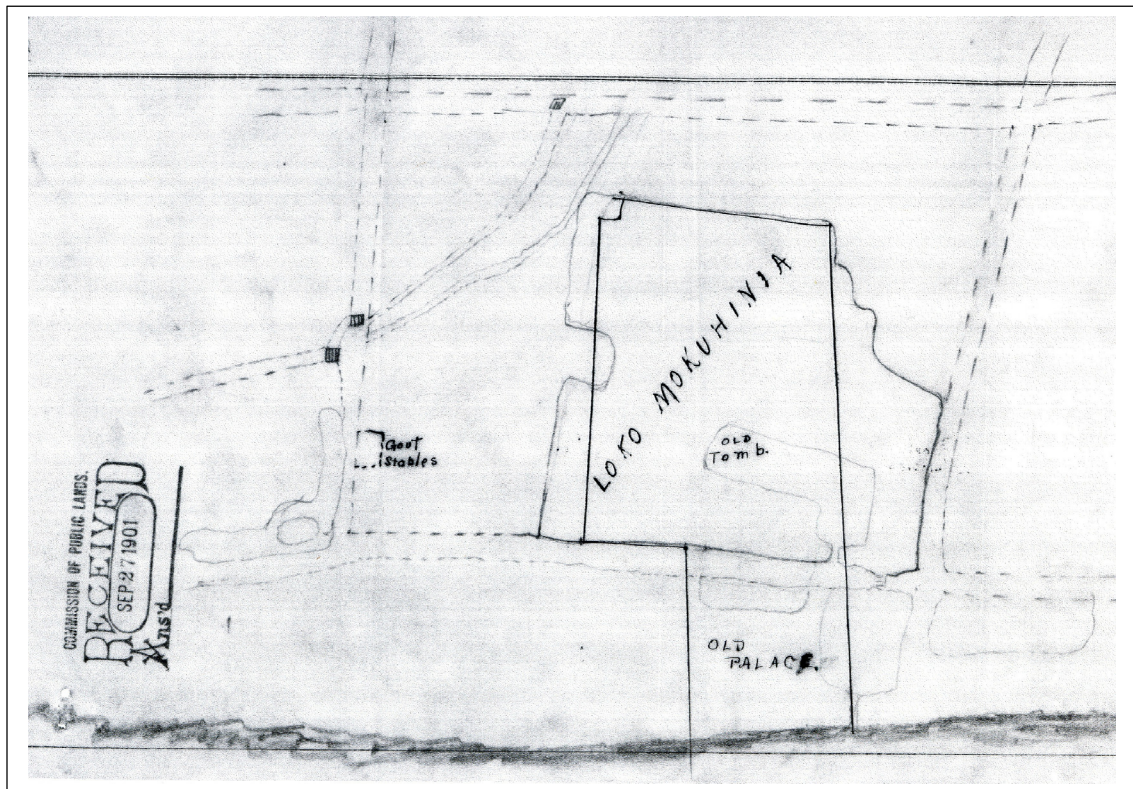
¹ Mahalo nui iā Jen Kamaho’i Mather (ko māua kaikamahine ‘ohana) no kona mana’o e pili ana ka pono o ka ‘ulu ma Lele. He ‘eleu maoli ‘oe!

The Bill For An Ordinance Amending Section 3.38.020, Maui County Code, Relating To Hawaiian Cultural Restoration And Revolving Fund that is before you can be seen as an act of “good faith” towards a culturally sustainable “restoration of Lāhainā, and acknowledgement of the Waine‘e complex, which includes Kamehameha Iki Park, Moku‘ula and Loko Mokuhinia.

September 23, 1901

**W.D. Aiken, Sub-Agent Fourth Land District; to
Edward S. Boyd, Commissioner of Public Lands:**

...The most part of last week I spent in a trip to Lahaina to look into the matter of that land there called “Loko Mokuhinia”, about which Mr. Hayselden wrote us. The claims upon this land appear to be several. There is no question about the part of it that lies makai of the Government road, where the old palace use to stand. Everybody is agreed that this belongs to the Government. But the larger part above the road is claimed by the Bishop Estate, with the Pioneer Mill Co., claiming to own all of it that is above water, a small neck where the old royal tomb still stands. It is a small piece, and is indicated on the map [below]... ...The Plantation claims to have a deed to the premises where the old tomb stands, but could not find it when I was there... ...Most of the piece above the road is a swamp, and I should say a menace to the health of the people, as it is full of filth. It would cost a good deal to fill it in but that is what should be done. If it should be Government property I would recommend that it be sold, as no one would fill it in under a leasehold. The piece makai of the road is in fair shape, though a little filling would improve it, and it ought to be quite valuable... ...The part of Loko Mokuhinia indicated by the red lines, is where the Gov't. claim comes in. Outside of this is kuleanas. To the left you will note the Gov't. stables indicated. The hospital site is a little further along to beach to the right... [Hawaii State Archives, DLNR 2 Box 16]



**Sketch Map of Loko Mokuhinia, the “Old Tomb” and “Old Palace”
(Sept. 23, 1901 Hawai‘i State Archives)**

Selected References:

Buke Mahele

1848 Buke Kakau Paa no ka mahele aina i hooholoia iwaena o Kamehameha 3 a me Na Lii a me Na Konohiki ana Hale Alii Honolulu. Ianuari 1848. (Ke Kope 1864).

Fornander, A.

1917–1919 Fornander Collection of Hawaiian Antiquities and Folk-Lore. Memoirs of the Bernice Pauahi Bishop Museum. Bishop Museum Press, Honolulu. (Kraus Reprint, 1986)

Frederickson, W.M., and D.L. Frederickson

N.D. Final Report on the Preparation of King Kamehameha I's Brick Palace. Manuscript. Department of Land and Natural Resources - Historic Sites Section/State Historic Preservation Office. (Honolulu)

Kamakau, S.M.

1961 Ruling Chiefs of Hawaii. Honolulu: The Kamehameha Schools Press.

1964 Ka Po'e Kahiko: The People of Old. B.P. Bishop Museum Special Bulletin 51. Bishop Museum Press, Honolulu.

1991 *Tales and Traditions of the People of Old*. Honolulu: Bishop Museum Press.

Kingdom of Hawaii

1850 "Kanawai Hoopai Karaima no ko Hawaii Pae Aina" [Penal Code].

National Register of Historic Places

1997 "National Register of Historic Places, Registration Form: :Kamehameha III's Royal Residential Complex, Moku'ula; Loko Mokuhinia; Hale Piula; State Site 50-50-03-2967." (Mar. 27, 1997).

Taylor, A.P.

1928 Lahaina: The Versailles of Old Hawaii. Thirty-Seventh Annual Report, Hawaiian Historical Society (Honolulu).

The Honolulu Advertiser

1923 "Centenary of Missions Near" (*The Honolulu Advertiser*, May 6, 1923:10) (Re.: Wm. Owen Smith, had the Lahaina Banyan Planted 50 years.)

The Honolulu Star Bulletin

1929 "Hawaii Honors W. O. Smithy at Funeral Rites" (*The Honolulu Star Bulletin*, April 15, 1929:5) W. O. Smith, born in 1848, and during his life time, he was a major player in orchestrating the overthrow of the Hawaiian Monarchy.

Vancouver, G.

1798 A Voyage of Discovery to the North Pacific Ocean, and Round the World,
1984 The Voyage of George Vancouver. London: Hakluyt Society. (four volumes) Edited by W. Kaye Lamb.

