



Maui County Recovery Framework

**2023
Wildfire**



Agenda

- Recovery Framework Guiding Principles
- Recovery Process Overview
- Organizational Structure
- Recovery Support Functions
- Continuous Monitoring & Improvement
- Next Steps

Recovery Framework

The Maui County Recovery Framework serves as a structured plan for organized recovery.

- Establishes the Office of Recovery
- Describes the Recovery Process
- Provides guidance to the Recovery Support Functions

Guiding Principles

The Recovery Framework offers seven guiding principles that guide recovery core capability development and recovery support activities to achieve recovery success.



Seven Guiding Principles

Community Led, Government Supported

Individuals and Family

Leadership and Local Primacy

Engaged Partnerships and Inclusiveness

Unity of Effort

Safety, Resilience and Sustainability

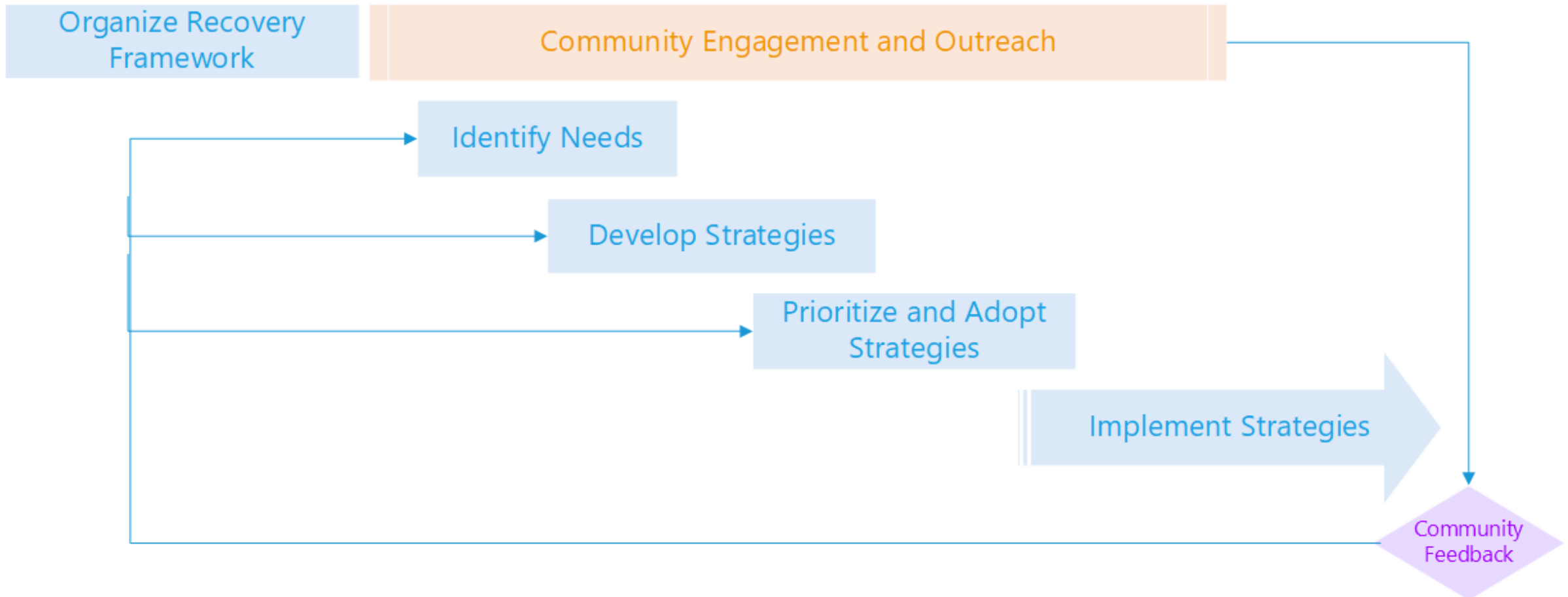
Psychological and Emotional Recovery

Recovery Process

The road to recovery post-disaster is not linear, but rather a cyclical and iterative process.

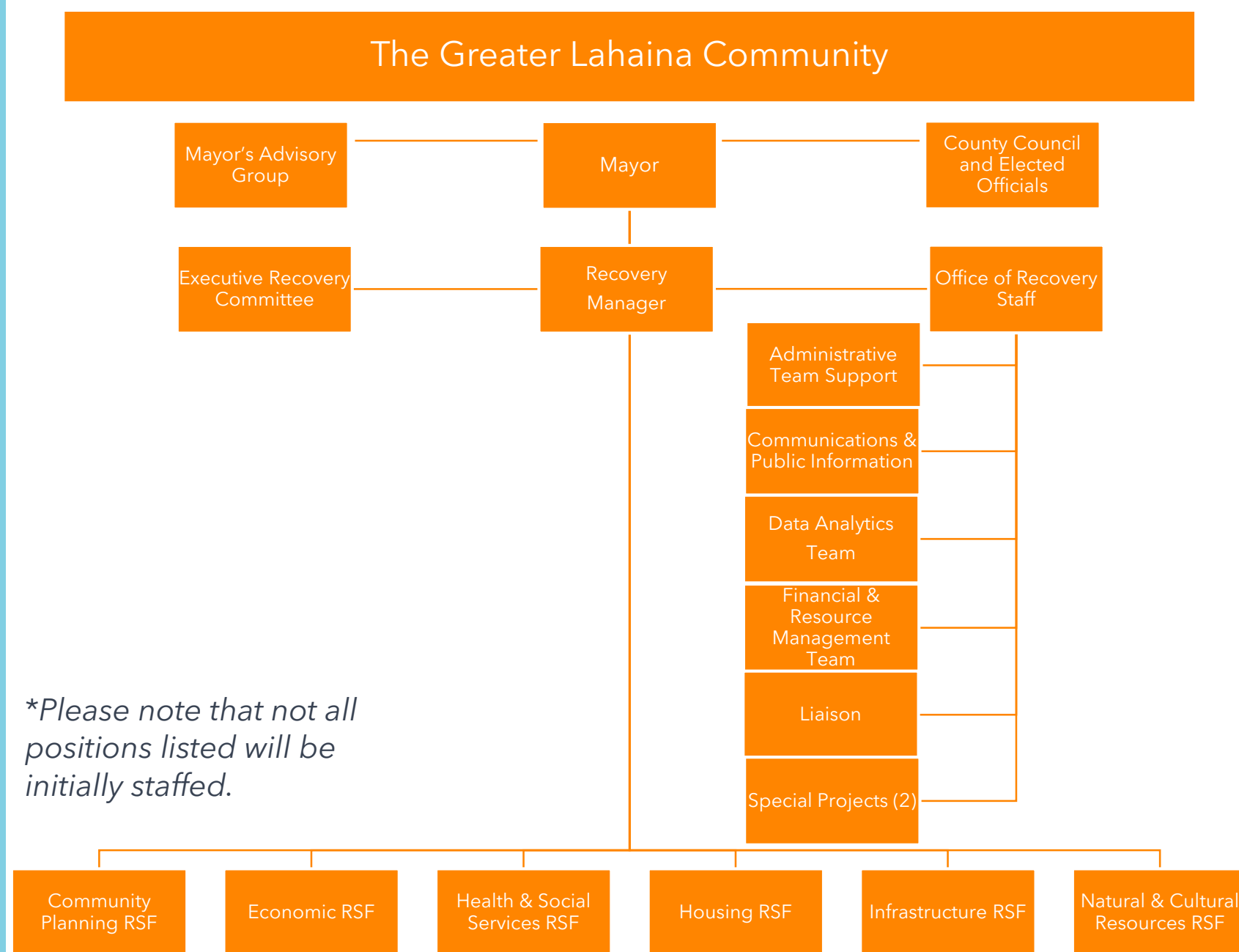


Recovery Process



Organizational Structure

- The organizational structure represents the foundation upon which the Maui County Office of Recovery stands.
- It is designed to **streamline** decision-making, **foster** collaboration, and **ensure** that every voice is heard.
- Clear roles and responsibilities allow for efficient resource allocation and avoid overlapping duties.



Recovery Support Functions (RSFs)

Sector-specific collaborations that facilitate the successful execution of recovery strategies post-disaster.



RSF Organizational Framework

Strategic Level

RSF Leadership & County Departments

RSF Lead/s

Supporting
County
Agencies

Tactical Support

State Agencies, Federal Agencies,
and Non-Profit/Philanthropic Partners

State RSF
Coordinator

Federal RSF
Coordinator

Non-profit &
Philanthropic
Groups

Supporting
State
Agencies

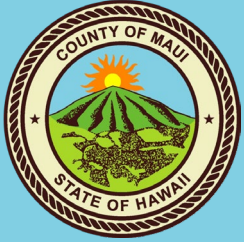
Supporting
Federal
Agencies

Stakeholder Groups

Non-governmental Organizations,
Private Sector, and Community
Groups

Subject Matter
Experts

*RSF participation and organization
is at the discretion of the RSF Lead



Community Planning



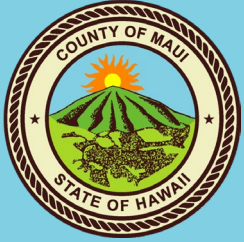
Scope

- The Community Planning RSF is responsible for identifying, assessing, and providing resources in support to post-disaster community planning and capacity building in the impacted areas.
- The Community Planning RSF is the lead entity on community engagement for the recovery process.

Operational Areas

- Urban Planning
- Zoning
- Land Use
- Community Engagement and Input

Recovery Support Function Lead/s	Agency
Garrett Smith	County of Maui Department of Planning
Erin Wade	Department of Management



Health & Social Services



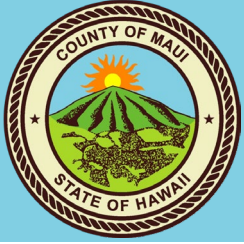
Scope

- The Health and Social Services RSF oversees the assessment of medical/health needs, public health, healthcare, and social services networks.

Recovery Support Function Lead/s	Agency
Kaunanoe Batangan	County of Maui Department of Transportation
Chris Kish	County of Maui Department of Housing and Human Concerns

Operational Areas

- Environmental Health and Stability
- Food and Nutrition
- Social Services
- Disaster Case Management
- Crisis Counseling
- Behavioral & Mental Health
- Schools and Education
- Primary Healthcare
- Specialty Healthcare



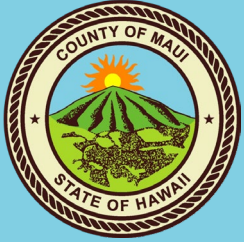
Scope

- The Housing RSF facilitates access to housing assistance and both interim and permanent housing solutions, by drawing on housing resources including the public and private sectors, as well as design construction, labor, materials, logistics, inspections, and financing.

Recovery Support Function Lead/s	Agency
Saumalu Mataafa	County of Maui Department of Housing and Human Concerns
Wendy Taomoto	County of Maui Department of Public Works

Operational Areas

- Housing Recovery Planning
- Rebuilding & Mitigation Strategies
- Housing Development



Infrastructure



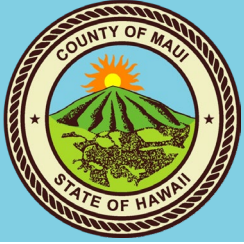
Scope

- The Infrastructure RSF is responsible for overseeing the restoration of all infrastructure and utility systems.

Recovery Support Function Lead/s	Agency
Jordan Molina	County of Maui Department of Public Works
John Smith	County of Maui Department of Public Works

Operational Areas

- Transportation
- Communication
- Wastewater
- Water
- Energy
- Information Systems
- Dams/Levees
- Telecommunications
- Critical Facilities
- Sanitation



Natural & Cultural Resources



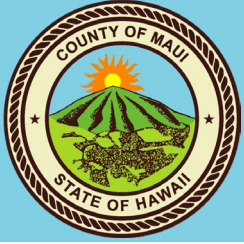
Scope

- The Natural & Cultural Resources RSF ensures the protection and rejuvenation of the county's ecosystems, landmarks, and cultural sites post-disaster.

Recovery Support Function Lead/s	Agency
Koa Hewahewa	County of Maui Department of Agriculture
Kaiea Mederios	Office of the Mayor

Operational Areas

- Natural Resources
 - Agriculture
 - Forests
 - Groundwater
 - Animal, fish, and wildlife
 - Threatened and endangered species
- Cultural Resources/Assets
 - Historic properties, structures, and districts
 - Libraries, museums, and other cultural institutions
 - Archaeological sites
 - Arts/arts community
 - Faith-based communities
 - Environmental Assets and Hazards



Economic Recovery



Scope

- Economic recovery is a key link to restoring the necessities of jobs and housing. Economic RSF will need to develop strategies to restore economic activity, as well as the housing, services, and functions addressed in other RSFs.

Recovery Support Function Lead/s	Agency
Luana Mahi	County of Maui Economic Development
Layne Silva	Liquor Control Commission

Operational Areas

- Economic Development
- Small Businesses
- Major Industry and Business Sectors
- Private Industry
- Workforce Development
- Finance and Insurance

Next Steps



ESTABLISH OFFICE OF
RECOVERY OPERATIONS



RECOVERY SUPPORT
FUNCTION KICK-OFF



RSFS DEVELOP STAFFING
PLANS



DEVELOPMENT OF
COMMUNITY
ENGAGEMENT STRATEGY



IDENTIFICATION OF
RECOVERY NEEDS

Contact

Josiah.K.Nishita@co.maui.hi.us

