

orig. ✓



maui bus

Central Maui Transit Hub

County of Maui | February 25, 2019

Current Transit Hub Location



FEB 25 2019

RECEIVED AT MT MEETING ON _____

(DOT, MARC TAKAMORI)

Transit Hub Timeline

- ▶ Discussions w/ HHFDC started on July 20, 2017
- ▶ Queen Ka'ahumanu Center notified MDOT on October 5, 2017 that they won't be renewing the license to occupy agreement.
- ▶ The County of Maui committed \$650K for planning & design in FY19 budget.
- ▶ The State of Hawaii committed \$2.5 million for construction in FY19/20 budget.
 - Additional \$1.5 million in DURF funds available.

Transit Hub Timeline (cont.)

- ▶ MDOT awarded the planning & design contract to Fukumoto Engineering with a NTP date of September 24, 2018.
- ▶ MOU between HHFDC, DAGS and the County was executed on December 24, 2018.

Team



MUNEKIYO HIRAGA

Planning, Project Management, Sustainable Solutions

▶ Robert Hobby

- ▶ Xamanek Researches, LLC
- ▶ Hawaii Land Design
- ▶ Geolabs



- ▶ Scot Listavich Structural Engineering
- ▶ Prepose Engineering Systems, Inc.
- ▶ Morikawa & Associates, LLC

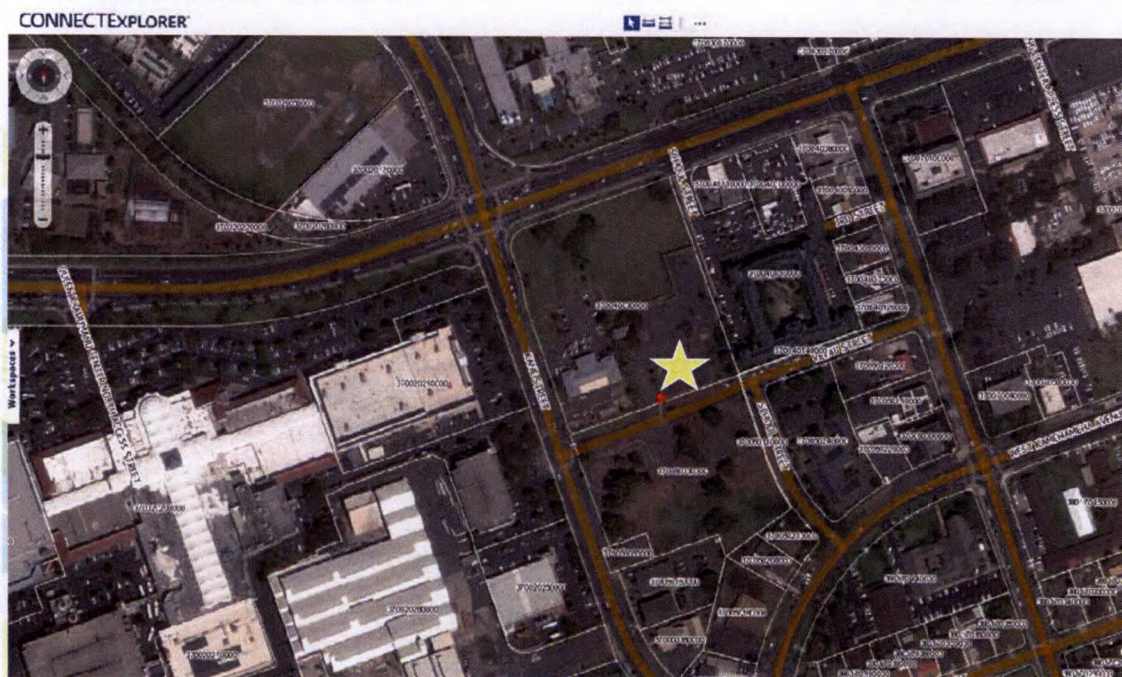
Planning & Design Update

- ▶ Compiled research on boundary maps & construction plans.
- ▶ Prepared draft project schedule for design team review.
- ▶ Completed field survey.
- ▶ Submitted topographic maps.
- ▶ Began compiling AutoCAD files for preliminary design.
- ▶ Flora/fauna site visit.

Planning & Design (cont.)

- ▶ Preliminary roadway layout.
- ▶ Draft traffic impact analysis report.
- ▶ Draft biological resource survey.
- ▶ Geotechnical engineer to collect soil data.
- ▶ Draft architectural site plan.
- ▶ Draft civil engineering site plan.
- ▶ Draft landscaping architectural planting plan.

Location



Sea Level Rise

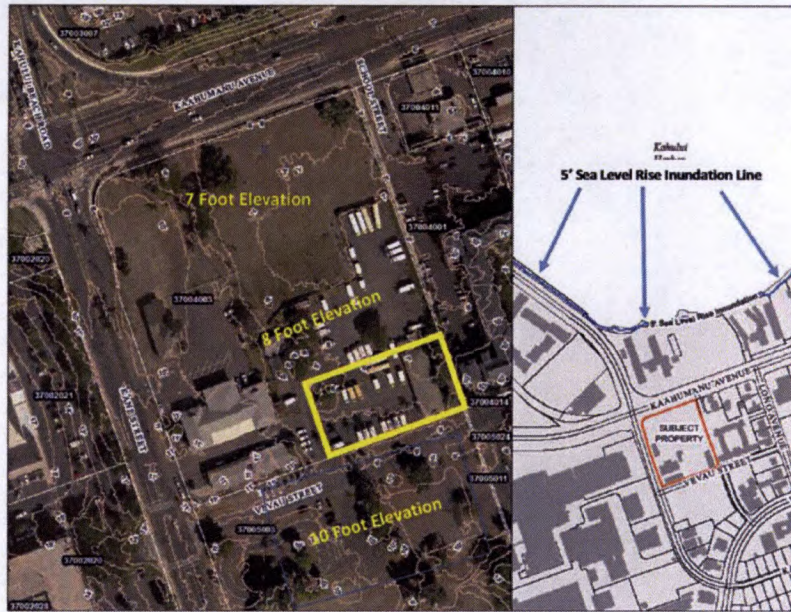


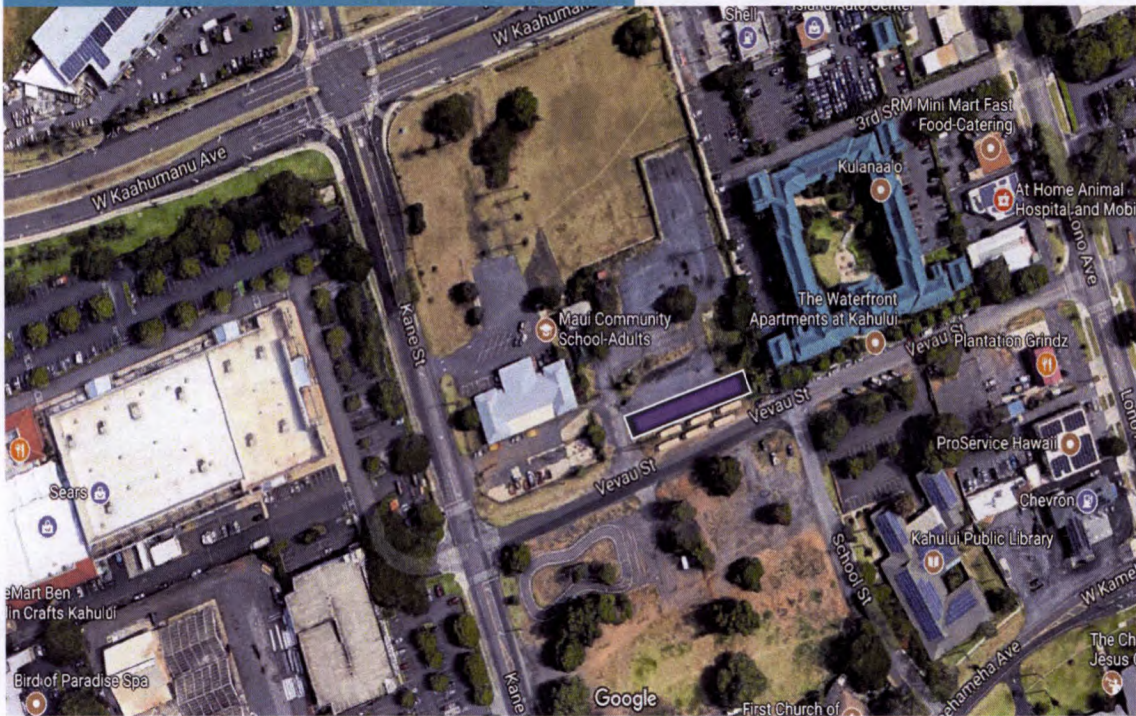
Figure 1. Elevations of TMK: (2) 5-7-024 (03). Data Source: US Army Corps of Engineers LIDAR, 2013.

Figure 2. Inundation Limits with 5' of Sea Level Rise with Respect to Subject Property.

Tsunami Threat

- ▶ Wave did send water up Pu'unene Ave reaching Wakea Ave. (near Christ the King)
- ▶ Transit Hub Location – Across from Maui Beach Hotel
- ▶ MDOT did follow up with Maui Beach Hotel regarding the event.
 - General Manager said no impact to hotel.
- ▶ MDOT Protocol for Tsunami
 - All buses are moved to War Memorial Stadium Parking Lot
 - No Services until warning is lifted and roads are cleared.
 - ▶ Transit Hub will be closed.
 - ▶ No danger to the bus riders.

Original Design



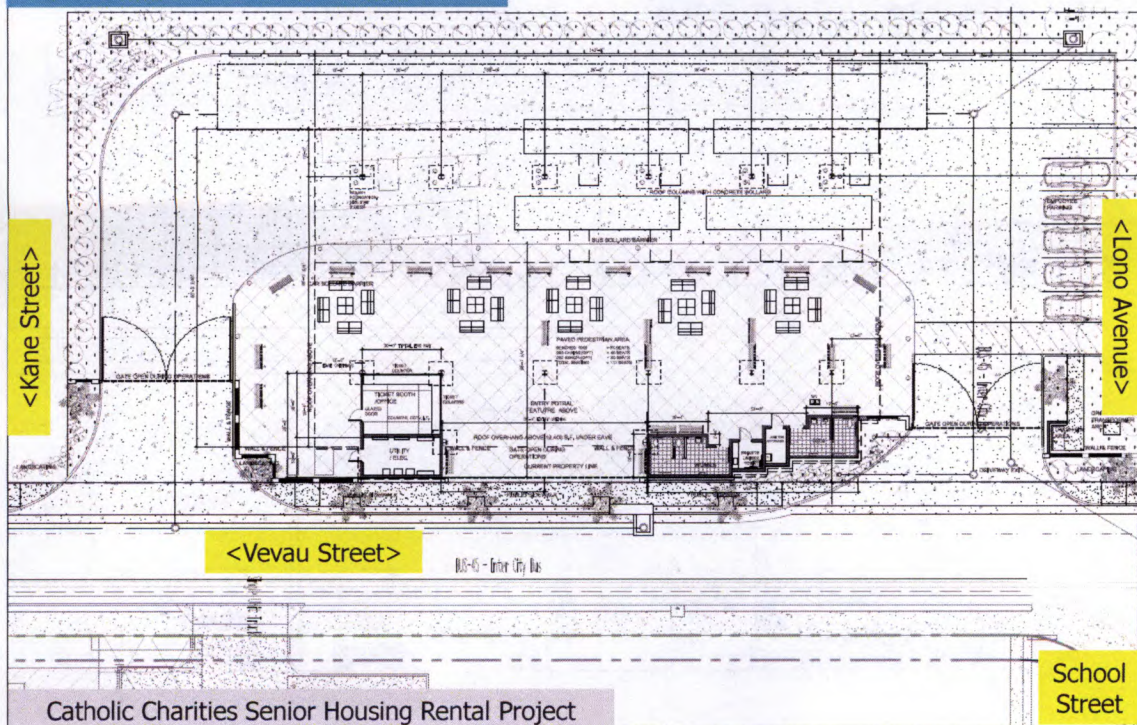
Design Ideas

- ▶ Safe, clean, well lit, comfortable, and shaded.
- ▶ Open and welcoming to all constituents.
- ▶ Large wide entrances and exits to allow vehicles to enter and exit without any problems.
- ▶ Designed to have 3 lanes in the event a vehicle needs to standby and/or breaks down (also for future expansion).
- ▶ Secured ticket booth office with electronic signage and annunciator system. Dispatcher will be able to view the passenger waiting areas to include the outside of the restrooms.

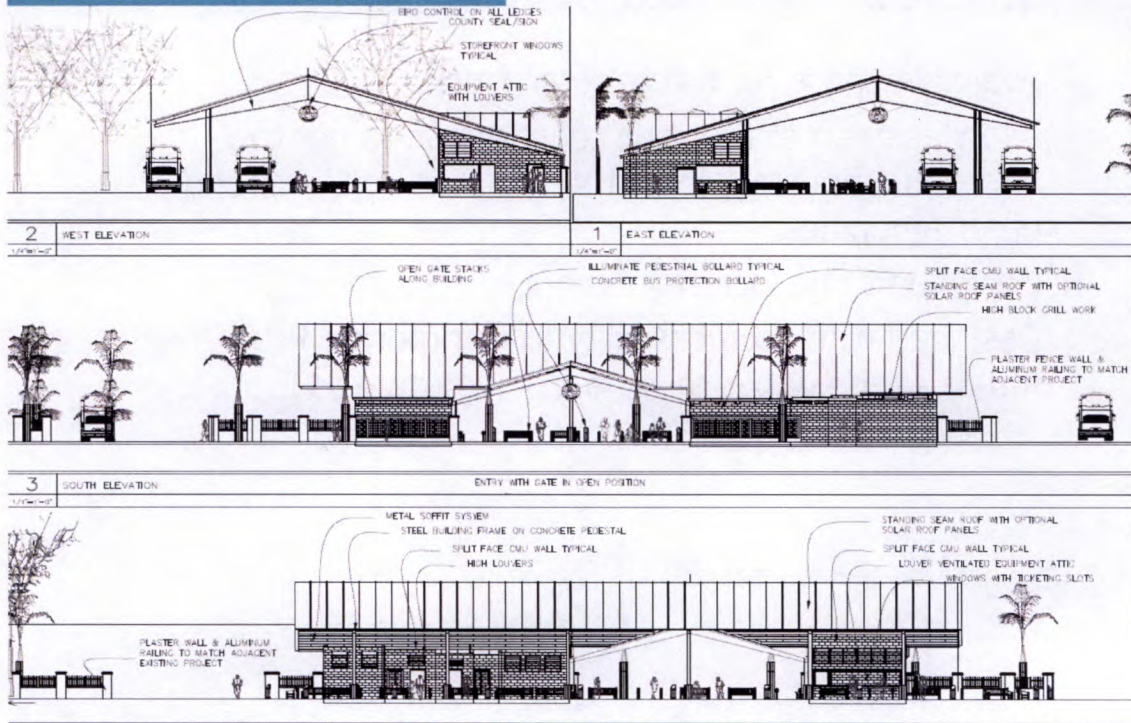
Design Ideas (cont.)

- ▶ Available space for future retail kiosk.
- ▶ Allow easy access for our constituents to get to affordable housing, job, stores, public services, and other amenities.
- ▶ Designed to be low maintenance.
- ▶ Designed with the possibility to incorporate PV in the future as the department is looking towards E-buses.

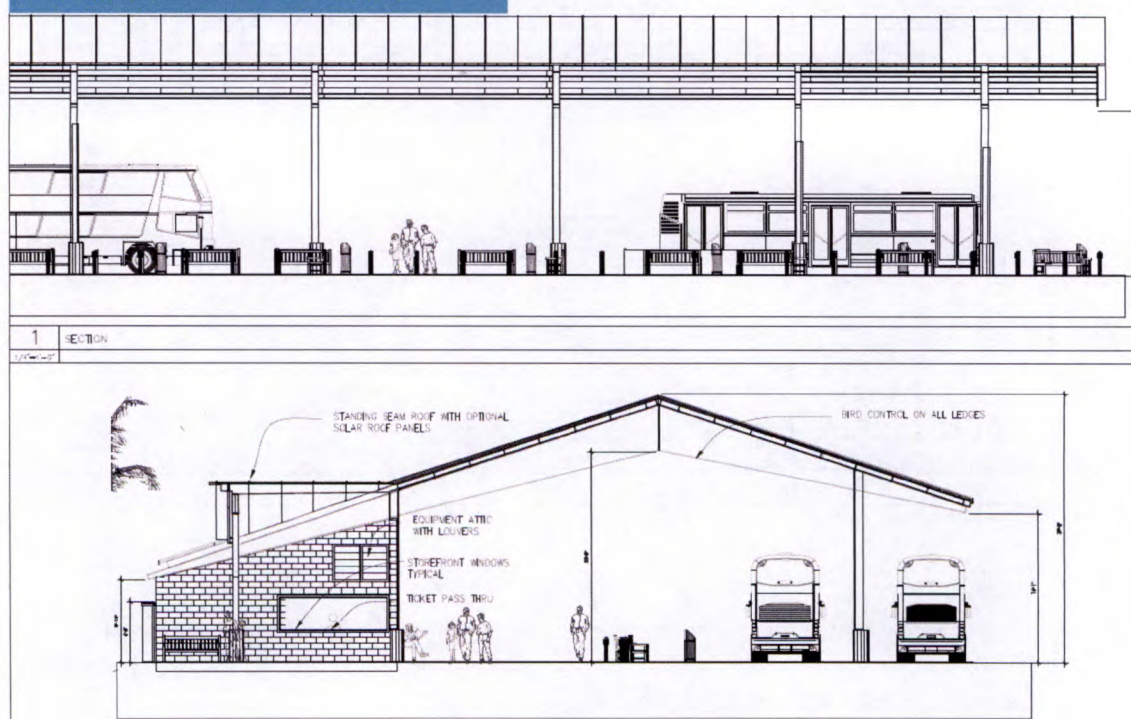
Site Layout



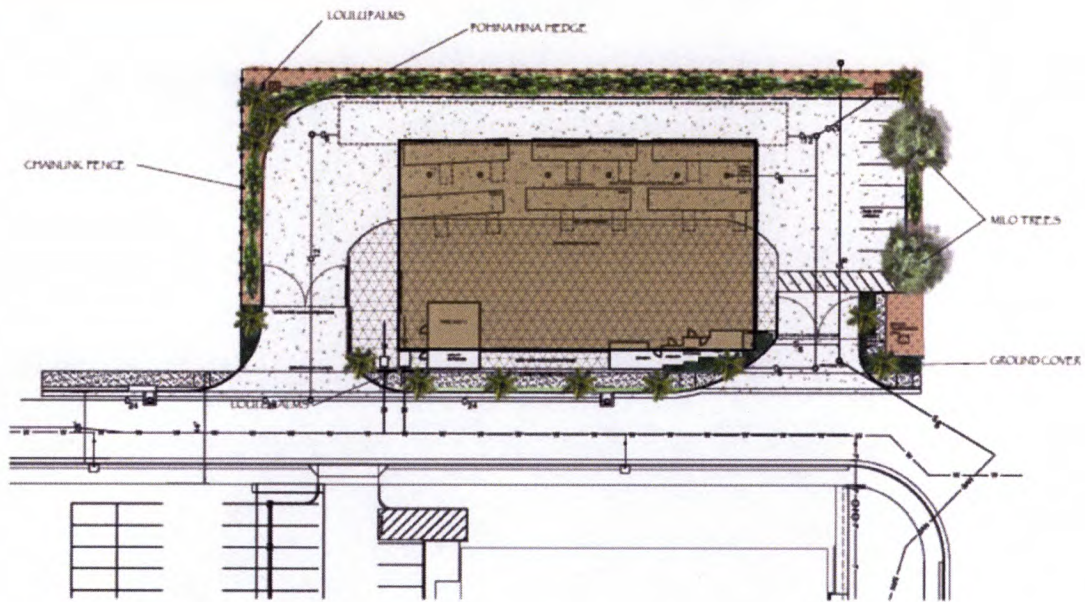
Site Layout



Site Layout



Site Layout



The Future...

