

ALAN M. ARAKAWA  
Mayor



RECEIVED

2017 APR 18 AM 11: 47

DANILO F. AGSALOG  
Director

OFFICE OF THE MAYOR

MARK R. WALKER  
Deputy Director

COUNTY OF MAUI  
DEPARTMENT OF FINANCE  
200 S. HIGH STREET  
WAILUKU, MAUI, HAWAII 96793

April 18, 2017

Honorable Alan Arakawa  
Mayor, County of Maui  
200 South High Street  
Wailuku, Hawaii 96793

For Transmittal to:

Honorable Michael White, Chair  
And Members of the Maui County Council  
200 South High Street  
Wailuku, Hawaii 96793

APPROVED FOR TRANSMITTAL

  
Mayor Date 4/20/17

Dear Chair White:

**SUBJECT: E PAEPAE KA PUKO'A SUBDIVISION  
BIKEWAY LOTS 25, 26, & 27  
TMK: (2) 3-8-095:024, 025 & 026**

Pursuant to Section 3.44.015 H. of the Maui County Code, this letter shall serve as notice that the County of Maui has accepted a Warranty Deed for the Northshore Greenway Phase 2 Bikeway Path Lots 25, 26, & 27 per the Subdivision Agreement by the Department of Public Works – Engineering Division. The parcels are identified by the subject Tax Map Key Numbers and as shown in the enclosed map for the E Paepae ka Puko'a Subdivision.

Thank you for your attention in this matter. Should you have any questions, please feel free to contact me at Ext. 7475.

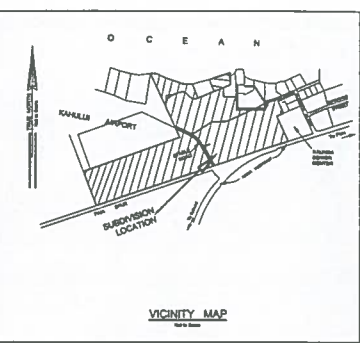
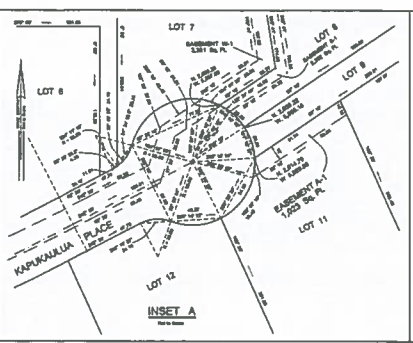
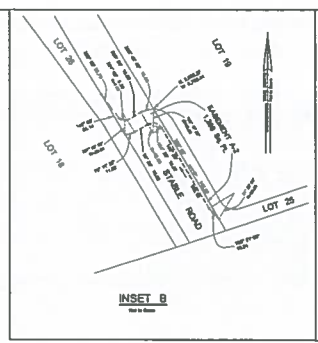
Sincerely,

DANILO F. AGSALOG  
Director of Finance

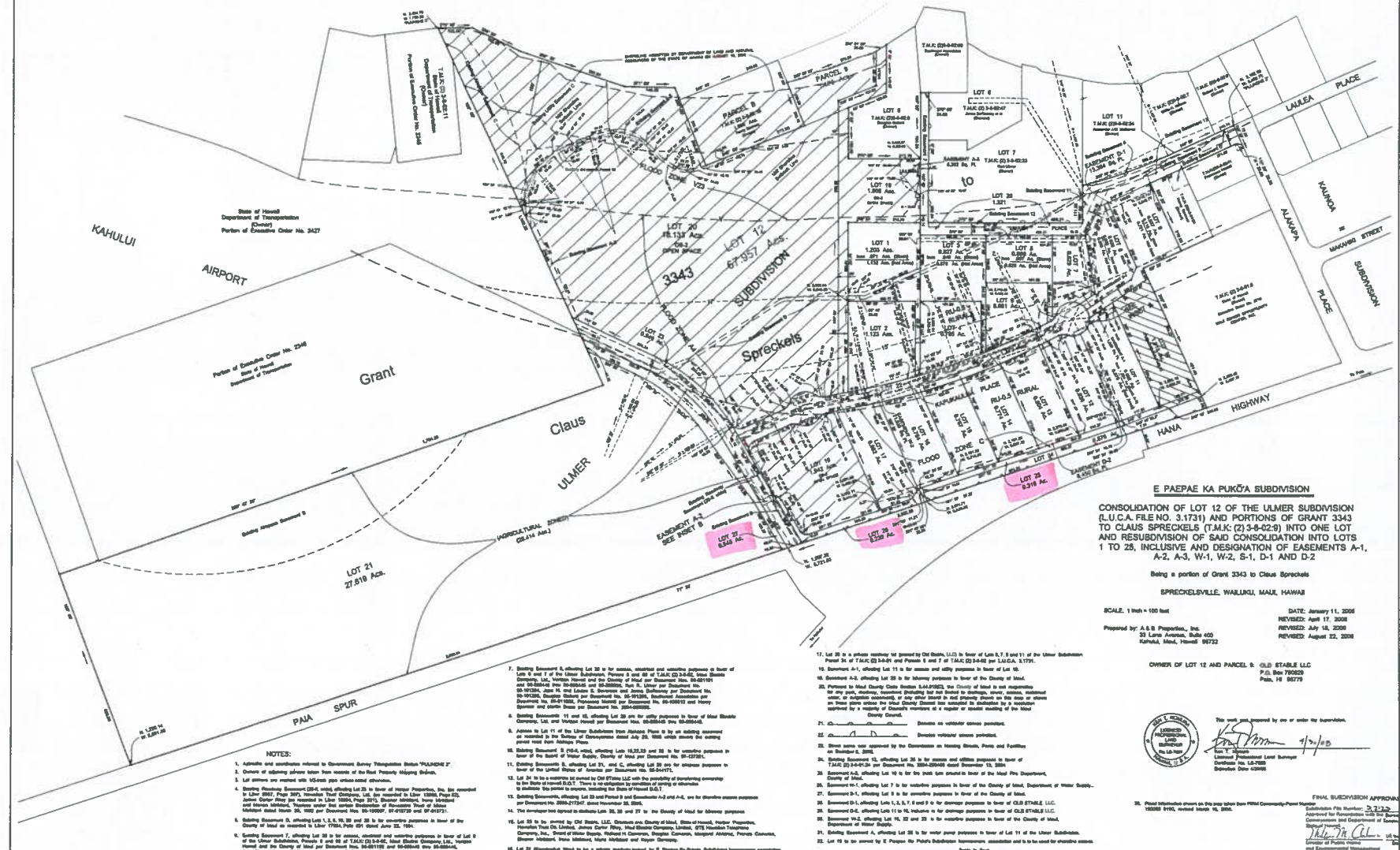
Enclosure

RECEIVED  
2017 APR 21 PM 2: 32  
OFFICE OF THE  
COUNTY CLERK

COUNTY COMMUNICATION NO. 17-186



O C E A N



**E PAEPAE KA PUKŌ'A SUBDIVISION**  
**CONSOLIDATION OF LOT 12 OF THE ULMER SUBDIVISION (L.U.C.A. FILE NO. 3.1731) AND PORTIONS OF GRANT 3343 TO CLAUS SPRECKELS (T.M.K. (2) 3-6-02-9) INTO ONE LOT AND RESUBDIVISION OF SAID CONSOLIDATION INTO LOTS 1 TO 20, INCLUSIVE AND DESIGNATION OF EASEMENTS A-1, A-2, A-3, W-1, W-2, S-1, D-1 AND D-2**

Siting a portion of Grant 3343 to Claus Spreckels  
 SPRECKELVILLE, WALLILU, MAUI, HAWAII

SCALE: 1 inch = 100 feet  
 DATE: January 11, 2008  
 REVISION: April 17, 2008  
 PREPARED BY: A & B Preparation, Inc.  
 23 Lulu Avenue, Suite 100  
 Kahala, Maui, Hawaii 96732

OWNER OF LOT 12 AND PARCEL 9: OLD STABLE LLC  
 P.O. Box 75022  
 Paia, HI 96779



This work prepared by or under the supervision of:  
  
 A & B Preparation, Inc.  
 Civil Engineering License No. 12478  
 Surveying License No. 12478  
 Stationing License No. 12478

FINAL SUBDIVISION APPROVAL  
 Submission File Number: 23-112-2  
 Approved for Recording: 2008-07-16  
 Commission and Department of Taxation  
 Department of Public Works  
 Department of Planning and Development Management

- NOTES:**
1. All easements and encumbrances shown on this map are shown as they exist on the date of recording of this map.
  2. All easements and encumbrances shown on this map are shown as they exist on the date of recording of this map.
  3. All easements and encumbrances shown on this map are shown as they exist on the date of recording of this map.
  4. All easements and encumbrances shown on this map are shown as they exist on the date of recording of this map.
  5. All easements and encumbrances shown on this map are shown as they exist on the date of recording of this map.
  6. All easements and encumbrances shown on this map are shown as they exist on the date of recording of this map.
  7. All easements and encumbrances shown on this map are shown as they exist on the date of recording of this map.
  8. All easements and encumbrances shown on this map are shown as they exist on the date of recording of this map.
  9. All easements and encumbrances shown on this map are shown as they exist on the date of recording of this map.
  10. All easements and encumbrances shown on this map are shown as they exist on the date of recording of this map.
  11. All easements and encumbrances shown on this map are shown as they exist on the date of recording of this map.
  12. All easements and encumbrances shown on this map are shown as they exist on the date of recording of this map.
  13. All easements and encumbrances shown on this map are shown as they exist on the date of recording of this map.
  14. All easements and encumbrances shown on this map are shown as they exist on the date of recording of this map.
  15. All easements and encumbrances shown on this map are shown as they exist on the date of recording of this map.
  16. All easements and encumbrances shown on this map are shown as they exist on the date of recording of this map.
  17. All easements and encumbrances shown on this map are shown as they exist on the date of recording of this map.
  18. All easements and encumbrances shown on this map are shown as they exist on the date of recording of this map.
  19. All easements and encumbrances shown on this map are shown as they exist on the date of recording of this map.
  20. All easements and encumbrances shown on this map are shown as they exist on the date of recording of this map.
  21. All easements and encumbrances shown on this map are shown as they exist on the date of recording of this map.
  22. All easements and encumbrances shown on this map are shown as they exist on the date of recording of this map.