

# Infrastructure and Transportation Committee on 2022-03-22 1:30 PM

Meeting Time: 03-22-22 13:30

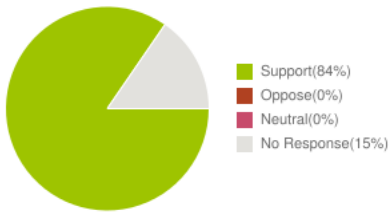
## eComments Report

Meetings	Meeting Time	Agenda Items	Comments	Support	Oppose	Neutral
Infrastructure and Transportation Committee on 2022-03-22 1:30 PM	03-22-22 13:30	4	13	11	0	0

### Sentiments for All Meetings

The following graphs display sentiments for comments that have location data. Only locations of users who have commented will be shown.

#### Overall Sentiment



# Infrastructure and Transportation Committee on 2022-03-22 1:30 PM

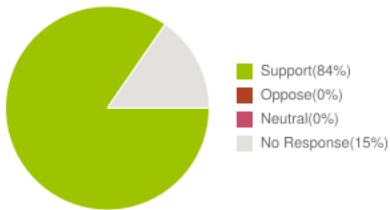
03-22-22 13:30

Agenda Name	Comments	Support	Oppose	Neutral
A G E N D A	1	1	0	0
IT-98 BILL 59 (2022) BILL 59 (2022), RELATING TO THE PLUMBING CODE (IT-98)	1	1	0	0
IT-22 CC 17-261 TRAFFIC IMPACT FEES (IT-22)	1	1	0	0
IT-72 CC 21-420 RESOLUTION 22-71 AND RESOLUTION 22-74, AIRCRAFT NOISE AND FLIGHT PATHS OVER MAUI COUNTY (IT-72)	10	8	0	0

## Sentiments for All Agenda Items

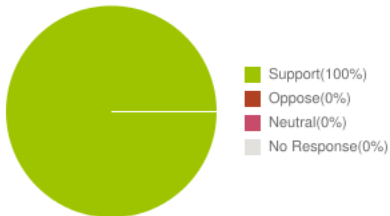
The following graphs display sentiments for comments that have location data. Only locations of users who have commented will be shown.

### Overall Sentiment



### Agenda Item: eComments for A G E N D A

### Overall Sentiment



## Plumbers and Pipefitters UA Local 675

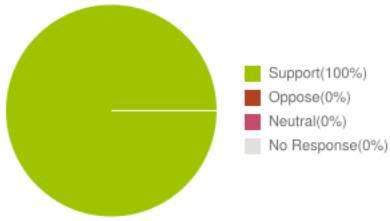
Location:

Submitted At: 4:06pm 03-17-22

In support of Bill 59 (2022). Mahalo

### Agenda Item: eComments for IT-98 BILL 59 (2022) BILL 59 (2022), RELATING TO THE PLUMBING CODE (IT-98)

## Overall Sentiment



## Gregg Serikaku

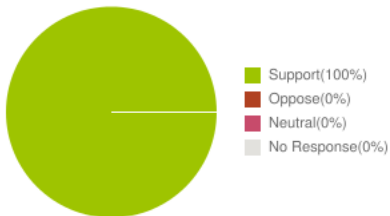
Location:

Submitted At: 10:37am 03-22-22

Support - Bill 59

Agenda Item: eComments for IT-22 CC 17-261 TRAFFIC IMPACT FEES (IT-22)

## Overall Sentiment



## Guest User

Location:

Submitted At: 12:04pm 03-21-22

Aloha!

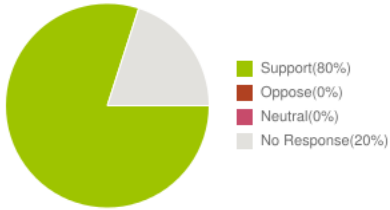
Mahalo to Infrastructure Committee Yuki Lei Sugimura for pursuing this important issue. I support the Resolution 22-74 and further request the Council request FAA to create no fly zones over ALL Maui County communities when a safe path without residences is available. I have been reminded that former Maalaea Community Association reached an agreement years ago for aircraft to fly over the mudflats vs over the Maalaea community. This has been done in the past and should be reinstated. Over the span of one hour on Saturday we were conducting our annual meeting in the parking lot at Island Sands. Four planes flew directly overhead and prevented the owners from being able to communicate until the planes passed. Almost every night at 2 am a freight plane flies directly over the Maalaea community, disturbing the sleep and welfare of our residents and visitors. Maalaea is not the only community affected by constant aircraft noise which is hazardous to our health and well being.

A roundtable is the first step, ultimately we need to be more aggressive in demanding peace and quiet for our neighborhoods.

Mahalo to the Chair and members for listening to our pleas.

Lynn Britton, Maui resident since 1973

## Overall Sentiment



### Guest User

Location:

Submitted At: 9:06pm 03-21-22

Aloha e dear elected Council Members,

I am writing to express my deep concern over recent changes to the flight patterns which now bring numerous plans, headed to OGG, directly over our home here in Ha`ik\_.

For as long as I can remember, the skies over Ha`ik\_ were largely free of the loud, disruptive noise of air plane traffic. Sadly, we have been robbed of this peace, once a key feature of our wonderful life here. Please understand that the impact of these changes are dramatic to our quality of life: I woke up at 3 am last night to the sound of a plane flying overhead (and I'm not a light sleeper) and three plans have flown over head in the time it's taken for me to draft this message. It is hard to fathom a justifiable explanation for why a decision was made to allow for a seemingly constant string of airplanes fly over a residential area. It feels as though our community has been taken advantage of - I don't recall any attempt to engage our community or assess the impact of this new flight path on our community.

As a representative of our district, I hope that you will advocate for a return to the peace and quiet we all deserve. There are clearly other routes possible, as this is a new issue for us, and if the cause of the switch was financial, which I suspect it is, it does not seem fair or right that it should be at our expense.

Mahalo nui for receiving this testimony and working to represent the interests of your constituents!

With aloha,

Chenta Laury

### Guest User

Location:

Submitted At: 12:08pm 03-21-22

Aloha,

I am a local Fulltime Hawaiian resident who actually lives in Ma'alaea. You say you represent local people in one breath then in another,(and you know who you are) comment that people in Ma'alaea are a bunch of rich folks that live in the mainland making a lot of money vacation renting! Well, it's time you stand up for the locals who live here in Ma'alaea! Support wastewater infrastructure that will help the environment, and stop the hundreds of planes from flying low, putting landing gear down too early, creating very loud noise and pollution causing health & safety issues. I am not rich, but saved every penny to purchase here, and paying more and more every year, struggling to keep up. Please put pressure on the FAA and support locals in Ma'alaea!

Mahalo

Leialoha Lei Makamae Shannon L VanderHeuvel, Lauhoa 402

**Guest User**

Location:

Submitted At: 11:04am 03-21-22

Aloha Councilmembers,

The Ma'alaea Village used to be a peaceful, quiet area in terms of air traffic over our community. My family has owned a condo in Ma'alaea since 1977, and at time of purchase and for many years after there was no flight path of incoming aircraft directly over our residential area. Over time that has changed, and for many years now our community has been subject to frequent daily day and night low level incoming flights. Those loud low flying planes interrupt normal conversations, can be heard by folks on the other end of a phone conversation, disrupt television programs, wake one from a peaceful sleep, etc. This past Saturday, in the span of 1.5 hours over 10 planes flew over an outdoor gathering, interrupting conversations on the ground in each instance. The repeated low flights directly over the entire community pose a health and environmental risk in terms of the noise level we must endure and the pollution from the engines that rains down on us.

Past flight patterns came in over Ma'alaea Bay and then turned to continue over the uninhabited Kealia Pond. Please request the FAA and the airlines to return to that original flight pattern, so that Ma'alaea may again achieve the peace and quiet it once enjoyed.

Mahalo for your time, and for your concern and commitment to a healthy environment for everyone!  
Mahalo Nui Loa!

**Guest User**

Location:

Submitted At: 10:19am 03-21-22

My wife and I own a condo in Maalaea Yacht Marina and have for 22 years. We enjoy living there very much and sharing it with family members who sometimes visit us. However, in recent years the noise from incoming planes has become very disruptive. There are, I am told, over 200 flights a day landing at the airport, and most fly directly over Maalaea with wheels down and flaps up, making noise so loud one cannot here others talk or hear the TV or radio. It is also quite disruptive of sleeping as a number of flight come in during regular sleeping hours. We have tried to get attention to this growing problem, but so far nothing has been done, and the number of flights promises to increase even more in the future. We are grateful that this issue has been added to this agenda and hope that the Committee can succeed in getting attention to this matter from elected officials and the FAA, which seems to have ultimate authority (and which has been ogning requests from OGG officials).

Thanks very much!

Jim Richardson  
Maalaea Yacht Marina, #310.

**Lyndon Ibele**

Location:

Submitted At: 9:53am 03-21-22

The Ma'alaea Village Association has been attempting to get the FAA's attention to excessive noise generated by flights directly over Ma'alaea for the past four years, requesting that flights either avoid Ma'alaea completely, or designate Ma'alaea as a "noise sensitive area" with mandatory noise abatement procedures. Local airport officials have been sympathetic, but the FAA will not respond to MVA's requests for a constructive meeting to discuss MVA's requests. There are already approved flight paths that avoid directly passing over Ma'alaea, without affecting other communities on Maui. There are even flight paths that are shorter in distance. Today, the FAA requires most flights to make a very long approach over the ocean, burning more fuel and contributing to greenhouse gas emissions while passing directly over Ma'alaea up to 250 times per day. Last week, MVA appealed to the major airlines serving Maui to request the FAA for changes that would implement the shorter flight path, with its shorter flight duration, a savings in fuel, and a reduction in GHG emissions. This is a win-win situation for everyone. But more pressure needs to be applied to the FAA to get them to act. MVA wholeheartedly supports Resolution 22-74 and commends the Maui County Council for its efforts to help resolve this issue. See attached file for MVA's letter to airlines. Mahalo, Lyndon Ibele, MVA President

**Guest User**

Location:

Submitted At: 8:26am 03-21-22

Please stop flying over Haiku!

### **Guest User**

Location:

Submitted At: 10:24am 03-20-22

Aloha Elected Council Members,

As I have expressed to Maui Councilman Molina and Congressman Kahele, as well as the FAA, the recent changes in air traffic over Ha'iku have greatly impacted our lives for the negative.

Just anecdotally, as I was working in the yard yesterday, 3/19/22, I decided to count the planes that flew overhead. In the course of one hour, I counted 11 large passenger jets. They flew directly overhead, so low that individual windows and airline logos could be identified. There were also several smaller aircraft, including a helicopter. We have lived at this address since 2009, and this never used to be the case. On average, there are 10-15 commercial flights an hour flying low and loud over our rural community, which is over 12 miles from the airport (OGG).

My understanding is that prior to the pandemic, flights were routed over the water. This clearly makes more sense. Part of why we chose to live in this rural setting is to enjoy the quiet — the sounds of the rain, the wind in the trees, the birds. If we were looking to move to the neighborhood now, I would opt out.

We ask that the FAA — for whatever governing body is in charge — return to the prior flight patterns. There is no reason, other than perhaps a small savings in fuel costs, why flights can't fly over the water and then bank in over agricultural land (just past Maliko). If not this, aircraft should fly at a MUCH higher elevation. Expedience too often trumps the experience of local residents. Whatever the rationale was in changing these flight paths, it clearly didn't reflect the wishes of the residents of Ha'iku. There was no community outreach. There was no notification this would happen. Here are specific questions that have yet to be answered by any of our local, state or federal representatives:

- 1) Why were the routes changed after the pandemic slow-down, so that they now fly low, loud and consistently over our community, which is located more than 12 miles from the airport?
- 2) Prior to the flight route changes, were residents notified? Certainly nobody in our 'ohana and/or acquaintances in our community knew of a change. Can the FAA just do that, without any community outreach?
- 3) What, specifically, are you doing to mitigate this problem? Either the flights need to return to their prior route, or they need to fly at a MUCH higher elevation.

Again, I would encourage all of our representatives in government to look at a flight traffic website. You'll see that (seemingly) all flights from the mainland to OGG fly directly over Ha'iku and our property:

[https://flightaware.com/live/airport\\_status\\_bigmap.rvt?airport=PHOG](https://flightaware.com/live/airport_status_bigmap.rvt?airport=PHOG)

Please email or call with any questions.

Many thanks,

Stefan Schaefer

stefan@cicalafilmworks.com

808-575-5222

### **Guest User**

Location:

Submitted At: 10:19am 03-20-22

In the months following Maui's Covid-19 shutdown, the lower Haiku area has been hit by an increasing stream of airline traffic/overflights. Since 2019, the North Shore has become an airline superhighway as planes cut the corner and fly directly over Huelo, Haiku and upper Paia/lower Makawao. On a given day, up to 10 planes per hour pass over our home off lower Kokomo with the stream beginning in midmorning and continuing until close to

midnight. Air Cargo flights also routinely fly over in the dead of night. The end result is a diminished quality of local life and reduced property values due to noise and air pollution as well as a hindrance to livelihoods as we, like many of our neighbors, farm our property and keep livestock. It is most disappointing that legislative action is now needed to undo an FAA action that was instated without any public notice and/or scoping in the first place.

**Guest User**

Location:

Submitted At: 11:52am 03-17-22

I am in favor of not allowing helicopter tours over Haleakala National Park. In addition, I believe the flight paths from OGG to the big island should stay over the ocean. Currently many of these flights take off to the north and then turn back to fly low over Paia/Kuau/Haiku, It would not require a big change in the route to do this.

S. Sussman, Haiku

**Guest User**

Location:

Submitted At: 11:18am 03-17-22

Take off landing approaches used prior to the changes made July 2019 should be reinstated. The current commercial air traffic over Haiku is obnoxious and 24/7. Planes are flying low over Haiku at all hours of the day and night. The FAA seems unconcerned and unresponsive to complaints. We are considering filing a class action lawsuit if the issue is not addressed immediately. FAA needs to stop doing the airline's bidding and make them go back to the old take off and landing approaches over the isthmus and ocean that mitigate the noise pollution we are currently enduring.

## Plumbers and Pipefitters UA Local 675



### COUNCIL OF THE COUNTY OF MAUI

#### INFRASTRUCTURE AND TRANSPORTATION COMMITTEE

Councilmember Yuki Lei K. Sugimura, Committee Chair

Councilmember Tasha Kama, Committee Vice Chair

#### NOTICE OF HEARING

Tuesday, March 22, 2022 at 1:30 pm, Online Via Blue Jeans

#### **Re: In Support of Bill 59 (2022), RELATING TO THE PLUMBING CODE**

Aloha Chair, Vice Chair and Committee Members;

Mahalo for the opportunity to testify in support of Bill 59 (2022) which updates the current plumbing code for Maui County.

Chartered in 1919, the Plumbers and Pipefitters UA, Local 675 is one of the oldest organized labor unions in Hawai'i and one of three 'licensed' skilled-construction trades, steeped in a rich history as one of Hawai'i's construction-industry pioneers.

The Plumbers and Pipefitters UA Local 675 appreciates and thanks this Committee, its Staff and the Department Public Works for giving us the opportunity to provide input and comments regarding this important Bill.

Local 675 supports the County's efforts to maintain current plumbing codes by adopting the 2018 published edition of the Uniform Plumbing Code as amended, as doing so increases efficiencies in the built community, reduces costs and assists in preserving Hawai'i's most valued resource (water).

Adopting Bill 59 (2022) most importantly supports the stated purpose<sup>1</sup> and underlying intent to safeguard public health, safety, and welfare by ensuring that plumbing systems are designed and constructed according to minimum industry standards by qualified and licensed professionals.

---

<sup>1</sup> Bill 59 (2022), Relating to the Plumbing Code, Section 101.3 Purpose. This code is an ordinance providing minimum requirements and standards for the protection of the public health, safety, and welfare.



Mahalo for the opportunity to testify in support of this important measure.



1088 BISHOP STREET #408  
HONOLULU, HI 96813  
PH: (808) 597-1216

GREGG S. SERIKAKU  
EXECUTIVE DIRECTOR

March 22, 2022

Councilmember Yuki Lei K. Sugimura, Chair  
Councilmember Tasha Kama, Vice Chair  
Council of the County of Maui  
Infrastructure and Transportation Committee

Chair Sugimura, Vice Chair Kama, and Members of the Committee:

**SUBJECT: BILL 59 RELATING TO THE PLUMBING CODE**

My name is Gregg Serikaku, Executive Director for the Plumbing and Mechanical Contractors Association of Hawaii, and we are the State's largest association representing plumbing, air conditioning, refrigeration, steamfitter, and fire sprinkler contractors in Hawaii.

Our Association supports the adoption of Bill 59 which updates Maui's plumbing code based on the 2018 edition of the Uniform Plumbing Code (UPC) published by the International Association of Plumbing and Mechanical Officials (IAPMO).

The 2018 UPC provides for the use of updated technologies, new installation methods, and important water conservation options, while maintaining the primary focus of protecting the public's health, safety, and welfare.

This code, together with the State and County's professional licensing requirements, result in properly designed, installed, and maintained plumbing systems.

Thank you for this opportunity to provide our testimony.

Respectfully yours,

A handwritten signature in black ink that reads "Gregg S. Serikaku".

Gregg S. Serikaku  
Executive Director



March 16, 2022

To: Air Canada  
Alaska Airlines  
American Airlines  
Delta Airlines  
Hawaiian Airlines  
Southwest Airlines  
United Airlines  
WestJet

RE: Flights to Kahului, Maui (OGG)

The Ma'alea Village Association (MVA) is an all-volunteer non-profit corporation representing the Ma'alea, Maui. The community consists of 560 condominiums housing residents and island visitors; single family residences; a state-run harbor with fishing and tourism watercraft; and a small business district including the Pacific Whale Foundation and the Maui Ocean Center (Maui's #1 tourist attraction). Ma'alea is the crossroads of Maui, and a tourism and recreation hub.

Though Ma'alea is thriving, it suffers because it is directly under the path of arriving aircraft now averaging more than 250 flights per day into the Kahului Airport (OGG). Ma'alea has changed little since it was developed in the 1970's, while the airport has experienced a continued increase in traffic. Daily aircraft arrivals are at or near record numbers and continue to grow. The noise problem is getting worse.

MVA has spent the past 4 years requesting that Ma'alea be declared a "noise sensitive" area and that approaching aircraft be redirected to avoid flying directly over the community. While the Hawaii Department of Transportation and local airport management have been sympathetic to our requests, MVA has had no success in convincing the FAA to make changes to bring relief to the Ma'alea community.

MVA is appealing to you for help in bringing this issue to the FAA's attention. While your direct control in this matter may be limited, your influence may make a difference. In addition to helping the Ma'alea community, there is significant benefit to you for requesting change. There are shorter flight paths that do not overfly Ma'alea or any other Maui communities at low altitude. These shorter flight paths reduce your time in the air, reduce your fuel costs, and reduce your carbon footprint. In these days of sky-high fuel prices, concerns about climate change, and corporate ESG goals, this is a win for everyone. You reduce costs, reduce your carbon footprint and provide better service for your customers, all while improving the quality of life for Ma'alea residents.

Please ask your pilots about the shorter routes shown in the attached pages and initiate action for change with the FAA. If you have questions, feel free to contact MVA member and Past President, Bill Hawkins. Bill is a retired American Airlines Captain with over 30 years of aviation experience and has been leading MVA's efforts to change flight paths to avoid Ma'alea. Bill can be reached by phone at 817-875-8875 or by email at [bill.hawkins@live.com](mailto:bill.hawkins@live.com).

Sincerely,

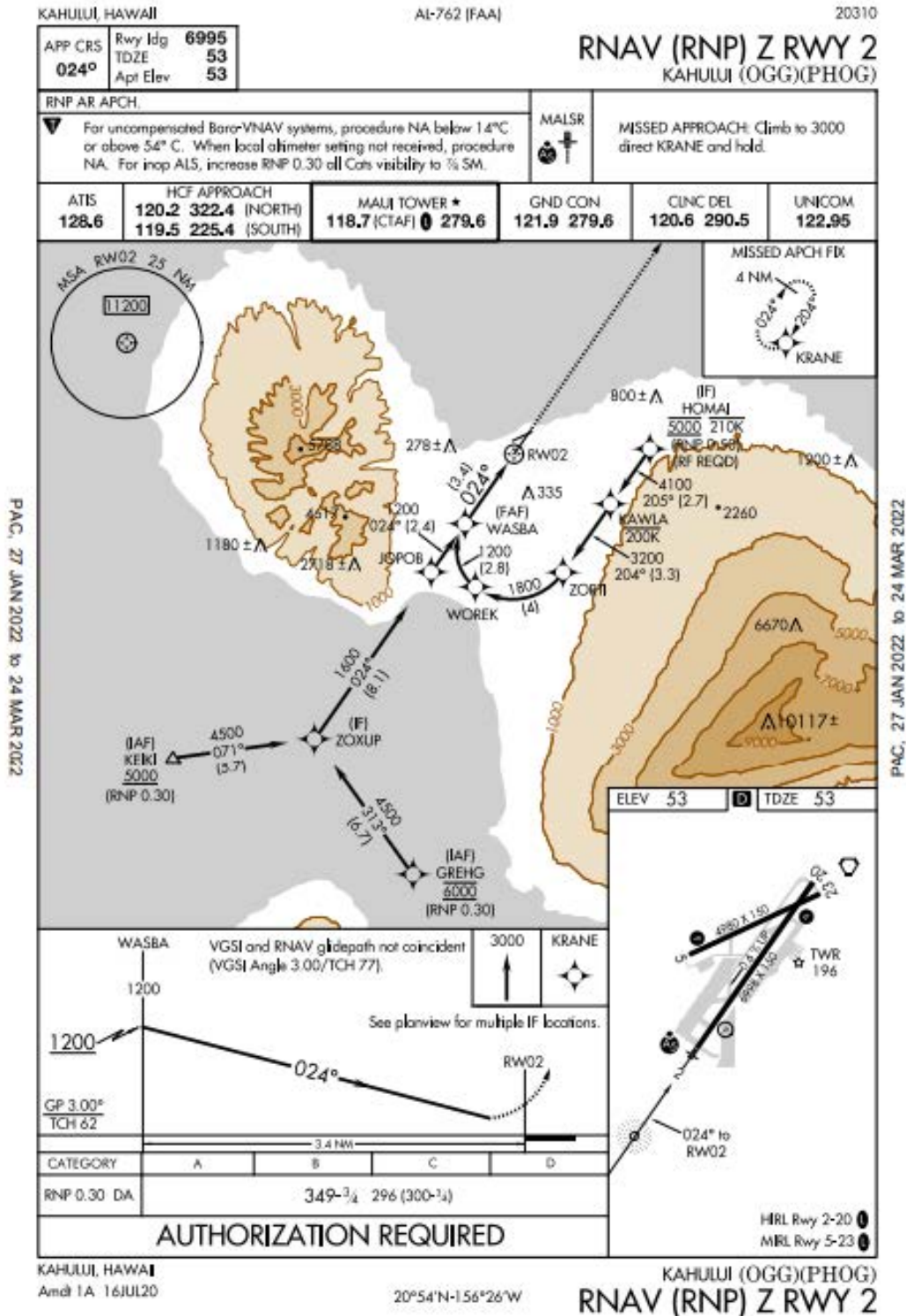
Lyndon C. Ibele, President-Ma'alea Village Association

cc: Maui Councilmember Kelly King, HI Senator Gil Keith-Agaran, HI Senator Roz Baker, US Congressman Kai Kahele  
Marvin Moniz-OGG Airport Manager, Mark McClardy, FAA Western-Pacific Region Director

---

Ma'alea Village Association  
P. O. Box 2122, Wailuku, HI 96793  
[maalaeavillageassociation@gmail.com](mailto:maalaeavillageassociation@gmail.com)

After contacting the FAA through the Hawaii Department of Transportation Airports (OGG), we are encouraging air carriers with RNP capability to file the LNDHY Arrival and fly the RNP Rwy 2 approach starting at HOMAI. This inbound track is very time and fuel efficient while avoiding Ma'alea.



Ma'alea Village Association  
P. O. Box 2122, Wailuku, HI 96793  
maaleavillageassociation@gmail.com

Below are two flight tracks from October, 2021; American Airlines (AAL) flight 7 and flight 119 from DFW. The shorter route avoiding Ma'alaea is more economical, timely, and reduces the carbon footprint. The shorter route is favorable for everyone including airlines, airline passengers, Maui residents, and environmentalists worldwide. The shorter flight path is over agricultural land and does not overfly any Maui communities at low level.

