

ADEPT Committee

From: Elizabeth Pickett <elizabeth@hawaiiwildfire.org>
Sent: Wednesday, September 13, 2023 3:13 PM
To: ADEPT Committee
Cc: Gabe Johnson; Axel I. Beers; Roxanne K. Morita; Kate Griffiths; Clay Trauernicht
Subject: Presentation for ADEPT mtg
Attachments: Maui County ADEPT committee mtg 9_14_23.pdf

Follow Up Flag: Follow up
Flag Status: Flagged

[You don't often get email from elizabeth@hawaiiwildfire.org. Learn why this is important at <https://aka.ms/LearnAboutSenderIdentification>]

Aloha James,

The presentation I will be sharing at tomorrow's meeting is attached.

Will I be able to share my screen during the meeting?

Thank you,

Elizabeth

Elizabeth Pickett
Co-Executive Director
Hawaii Wildfire Management Organization
65-1279 Kawaihae Rd. Ste 211
Kamuela, HI 96743
Office/ Message line (808) 885-0900
Cell (808) 443-8303
hawaiiwildfire.org

HAWAII WILDFIRE MANAGEMENT ORGANIZATION



501(c)3 nonprofit organization founded 2000

Vision: For the people and places of Hawaii and the Pacific to be wildfire-ready and wildfire-resilient

- Hub for wildfire research, prevention, mitigation, and planning activities
- Proactive, Collaborative, Multi-Partner, Forward-Thinking

HAWAIIWILDFIRE.ORG



Wildfire-Resilient Landscapes & Sustained Fire Fuels Management

County of Maui
Agriculture, Diversification,
Environment, and Public
Transportation Committee

1. Educational Resources
2. Understanding Wildfire
3. Wildfire-Resilient Landscapes
& Fuels Management

HWMO HAWAI'I WILDFIRE
MANAGEMENT
ORGANIZATION

WHAT IS AVAILABLE:

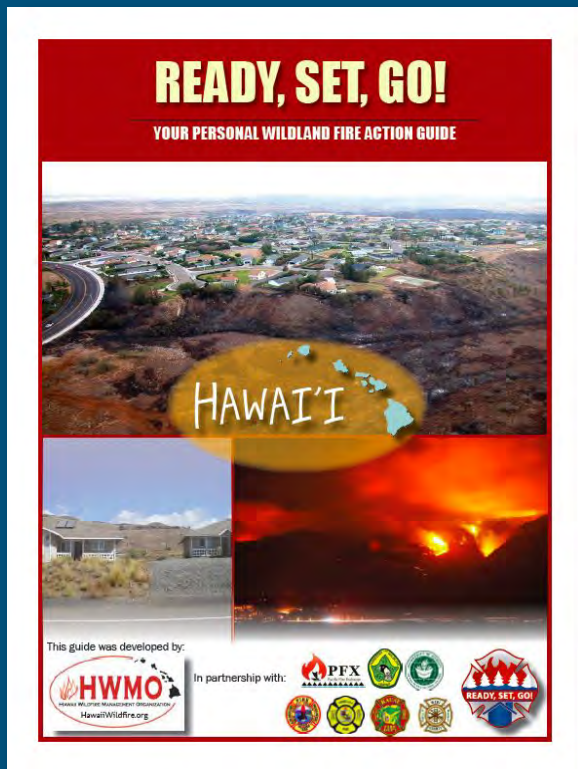
Educational Resources

Technical Assistance

Programs and Opportunities

FOR YOU TO SHARE

Unified, statewide, all-agency wildfire prevention information and programs



FOR YOU TO SHARE...

Keiki curriculum and outreach materials



Youth Materials



Wildfire Prevention
Coloring Book



Wildfire Prevention
Activity Book
(Grades K-2nd grade)



Wildfire Prevention
Activity Book
(2nd-5th grade)



K-8 KNOW FIRE
Classroom Wildfire
Curriculum



This product was made possible through support provided by the U.S. Forest Service, Pacific Southwest Region, under the terms of Grant No. 16-DG-11052012-146. USDA is an equal opportunity provider and employer.

Protect Your Home from Wildfire

5 Easy Steps:

1. Keep grasses cut short
2. Trim low-hanging tree branches
3. Remove leaf and other debris away from house and shrubs
4. Plant native and drought-tolerant plants
5. Have fun and be safe!

Get started today!

More wildfire preparedness tips at:
HawaiiWildfire.org



Brought to you by:
Hawaii's Wildfire
Management Organization

In support of:



#WildfireReadyHI

FOR COMMUNITIES TO BECOME PREPARED...

Hawaii Firewise Communities Program & Hawaii Firewise Network



HWMO HAWAII WILDFIRE
MANAGEMENT
ORGANIZATION



FOR FIRE & LAND MANAGEMENT PRACTITIONERS



www.PacificFireExchange.org
@PacificFireSci



College of Tropical Agriculture
and Human Resources
University of Hawai'i at Manoa

Forest and Natural Resource Management
February 2016
RM-20

Pre-Fire Planning Guide for Resource Managers and Landowners in Hawai'i and the Pacific

Clay Trauernicht¹ and Elizabeth Pickett²

¹University of Hawai'i Cooperative Extension Service, ²Hawai'i Wildlife Management Organization



College of Tropical Agriculture
and Human Resources
University of Hawai'i at Manoa

Forestry and Natural Resources Management
December 2019
RM-22

Fuel Breaks and Fuels-Management Strategies for Pacific Island Grasslands and Savannas

Clay Trauernicht¹ and Melissa Komz²

¹Department of Natural Resources and Environmental Management;
²Hawai'i Wildlife Management Organization, Kaniolu, HI

Grazing to Reduce Blazing



Pacific
Fire
Exchange

PFX Fact Sheet | April 2016

JOINT
FIRE SCIENCE
PROGRAM

Wildfire in the Western Pacific



Pacific
Fire
Exchange

PFX Fact Sheet | February 2017



2018 Wildfires in Hawai'i | PFX Annual Summary

Every wildfire incident is part of a larger pattern and is an opportunity to gain experience and insight for wildfire management. Three main factors contribute to wildfire risk.

Wildfire Review Series



Abandoned Agriculture in 2019 is Hawai'i's Fire Problem

communicating fire knowledge across the Pacific

In Hawai'i, the land area in active agriculture has declined by 60% since the 1960s causing vegetation buildup. Every wildfire incident is part of a larger pattern and is an opportunity to gain experience and insight for wildfire management. Three main factors contribute to wildfire risk.

PFX FACT SHEET



Pacific
Fire
Exchange

Climate Change Series

April 2021



Changing Climate and Wildfire: a Crisis Brewing in the Pacific

As the climate crisis rages on, wildfires will become ever more frequent, more intense, and more widespread in Hawai'i and across the Pacific. The most affected areas will be grasslands and savannas which surround residential areas and the edges of watershed forests.

Did You Know?



Wildfire risk in Hawai'i and around the Pacific is due to vast areas of highly flammable grasslands and shrublands (10-25% of island land area) and human-caused ignitions (up to 99% of all fires).



Warming air and changing rainfall patterns from climate change will increase our wildfire risk.



Heavier rainfall increases grass growth and makes more fuels, which, followed by more intense droughts increases the likelihood and intensity of fires.

Becoming wildfire-ready and wildfire-resilient are key climate adaptation strategies.

On our current trajectory, increasing temperatures

FOR FIRE & LAND MANAGEMENT PRACTITIONERS

Education and technical support
for those who manage large
lands:

- Training and working groups
- Fire planning
- Best practices for mitigation
- Grant application assistance



HWMO HAWAII WILDFIRE
MANAGEMENT
ORGANIZATION

FRAMING THE WILDFIRE SITUATION

The wildfire problem

Hawai'i and Pacific Islands
Areas are burning



The wildfire problem

Hawai'i and Pacific Islands
Areas are burning



because people are starting fires
(mostly accidentally, some arson).



The wildfire problem

Hawai'i and Pacific Islands
Areas are burning



because people are starting fires
(mostly accidentally, some arson).



Those fires spread across unmanaged
fire-prone vegetation,



The wildfire problem

Hawai'i and Pacific Islands
Areas are burning



because people are starting fires
(mostly accidentally, some arson).



Those fires spread across unmanaged
fire-prone vegetation,



& ignite the built environment,
becoming an urban conflagration.

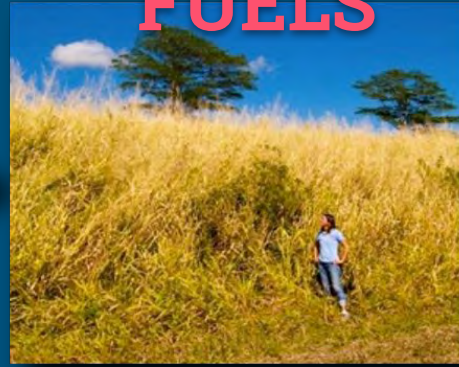


The Wildfire Equation

IGNITIONS



FUELS



causes



impacts

WILDFIRES

The Wildfire Equation

reduce
the
causes



+



=

prepare
&
protect



+



+



FOR YOU TO USE TO THINK THROUGH CREATIVE, MULTI-PURPOSE SOLUTIONS...

National Cohesive Wildland Fire Management Strategy





SO HOW DO WE ADDRESS WILDFIRE EFFECTIVELY & SUSTAINABLY ON THE LANDSCAPE?

**Wildfire-Resilient Landscapes
& Sustained Fire Fuels Management**



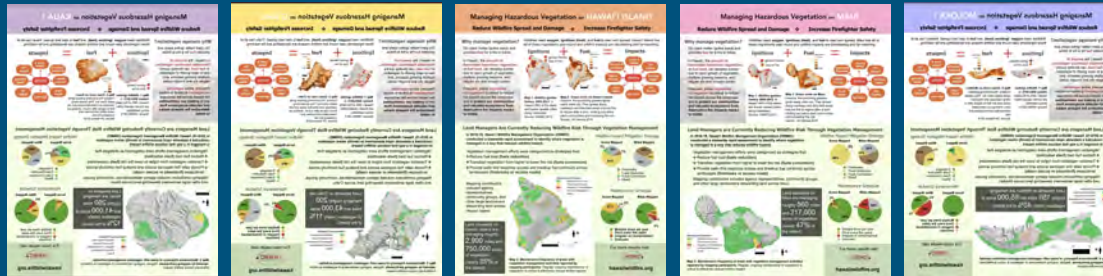
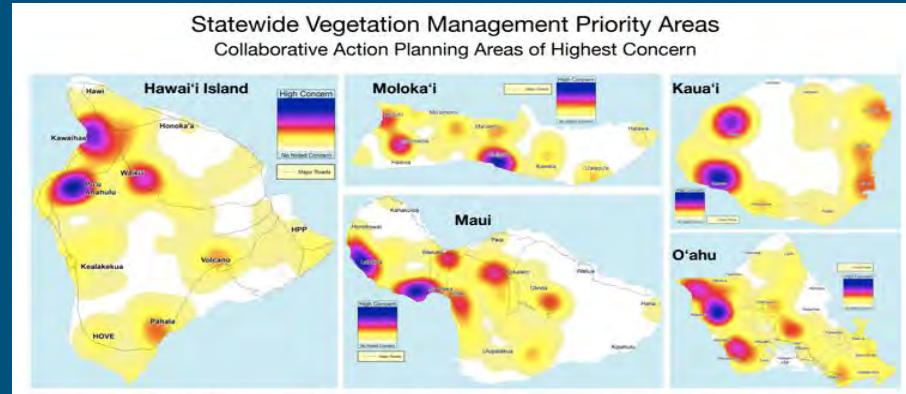
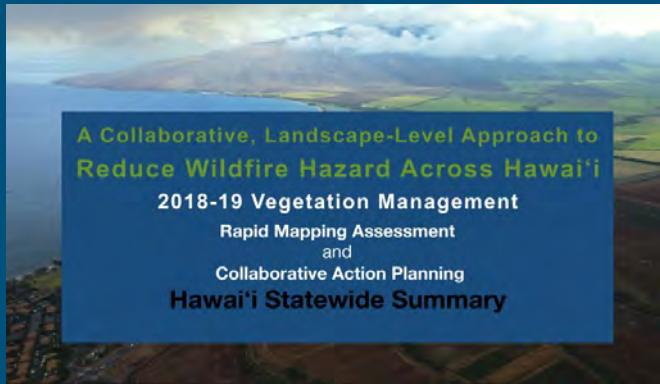
Many practitioners and policymakers are increasingly recognizing the need to develop **novel, integrated fire management approaches** that shift emphasis towards the **root causes of extreme fires**.

Landscapes and people can become more fire-resilient through **integrated fire prevention strategies**.

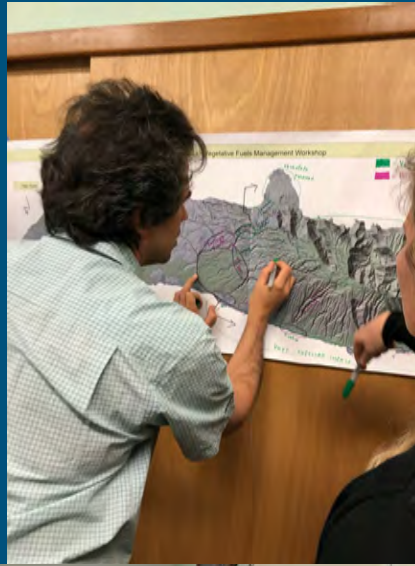
We need **interdisciplinary approaches, multiple stakeholder perspectives**, and **systems thinking**, so as to break down a wicked problem with complex linkages into manageable nodes of information.

USE THE WORK ALREADY DONE AS A STARTING POINT

Statewide understanding of vegetation management priorities, including Maui, Lana'i, Moloka'i



USE THE WORK ALREADY DONE AS A STARTING POINT



FOCUS ON: WILDLAND URBAN INTERFACE

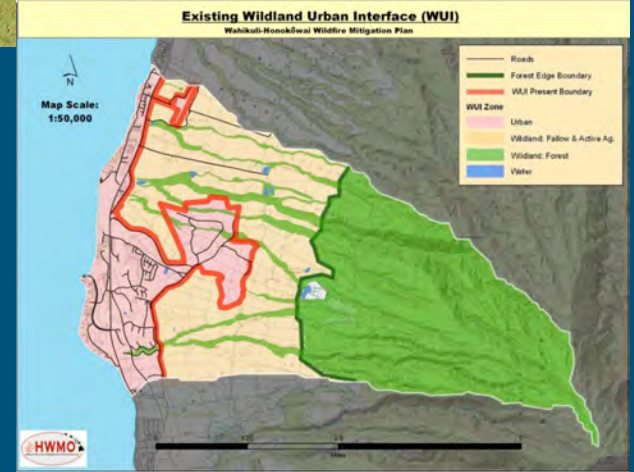
Recommended Actions



Reduce hazardous fuel loads around communities

- Make green waste removal easy for communities
- Use strategic grazing and fuel reduction buffers around community boundaries

Multi-purpose buffers along WUI boundaries and roads that serve as defensible space



FOCUS ON: SUPPORTING ACTIVE LAND USE AGRICULTURE & CONSERVATION



Encourage active management of agricultural lands including overgrown forestry operations

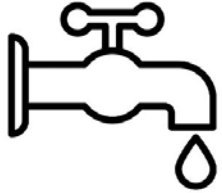


Auwahi Dryland Forest Restoration
Photo Credit: Arthur Medeiros, USGS



Ka'ala Farm
Photo Credit: kaalafarm.org

FOCUS ON: BUILDING FUNDING & CAPACITY



- Local funds and initiatives to support good stewards and active use of lands
- Water infrastructure and rights to use- for nurseries, planting, farming, grazing, and firefighting
- Workforce development to support agriculture and conservation

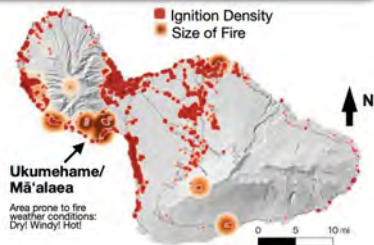
FOCUS ON: WHERE IGNITIONS ARE MOST OCCURING



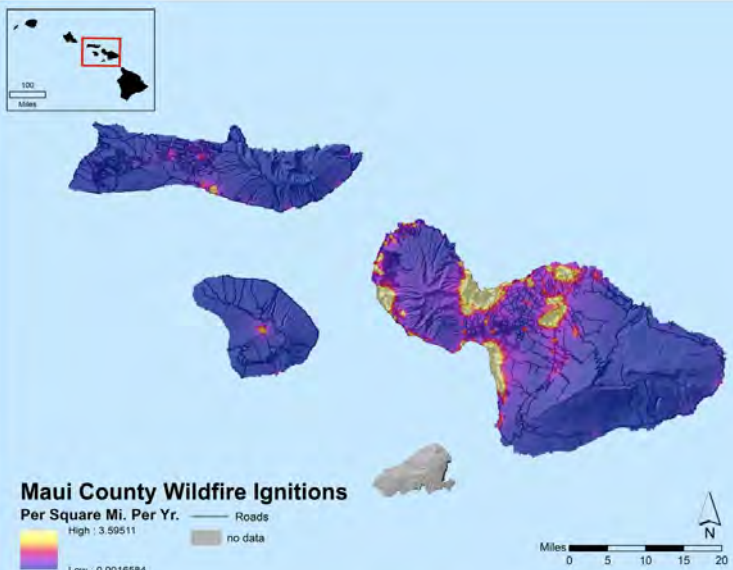
Prioritize 'hotspot' areas with recurring fires:

- Reduce hazards through strategic grazing and fuel reduction buffers
- Prevent ignitions by addressing the source of ignitions (e.g., power lines, encampments)

Maui Fire History 2002-2012



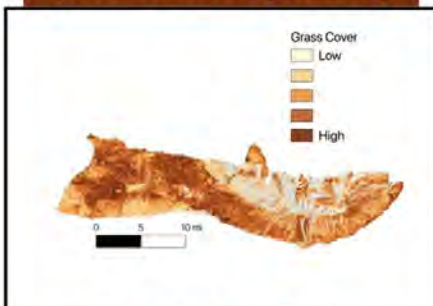
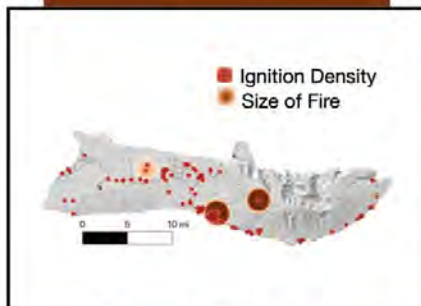
2018 Action Planning Workshop Highest Concern Areas



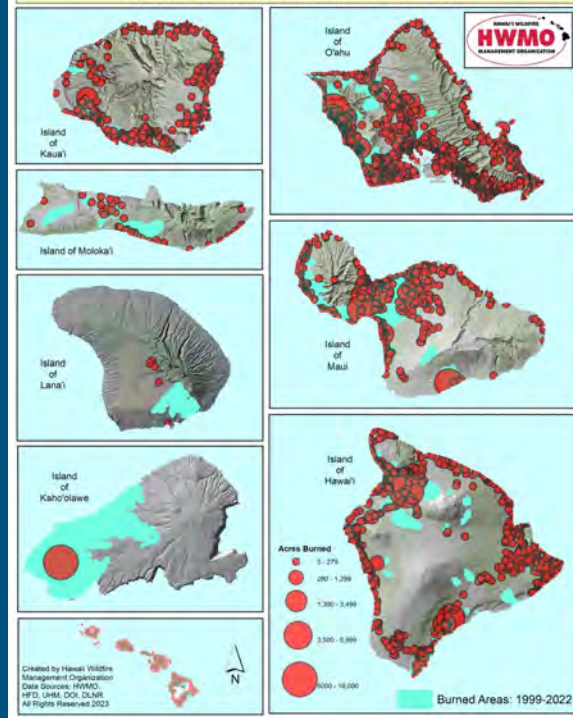
Ignitions

+

**Fuel
(Hazardous Vegetation)**



State of Hawai'i: Wildfire Incidents 1999-2022



FOCUS ON: PLANNING

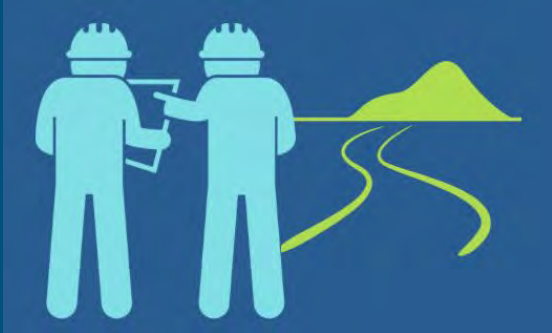


Develop planning and policies supportive of landscape-level vegetation management

- Island-wide vegetation management plan
- Develop funding sources for establishment and maintenance of fire infrastructure

AIM FOR: INTEGRATED MASTER PLAN

Master plan for thriving landscapes that protect from wildfire and provide for food, economy, and public health and safety



Opportunities and funds to assist land managers to develop site plans for wildfire mitigation & funds to implement

FOCUS ON: ACCOUNTABILITY

Proactive inspection of
hazard fuel management

Adequate funds to inspect,
enforce, and remove fuels
when noncompliant



Firefighting is the last line of defense when it comes to wildfire.



What is the first line of defense?

WILDFIRE-SAFE LAND USE

*...and a regulatory and funding environment
that ensures wildfire safety and wildfire-resilient landscapes*



Mahalo nui loa

Elizabeth Pickett

Co-Executive Director

Hawaii Wildfire Management Organization

hawaiiwildfire.org

HAWAII WILDFIRE
HWMO
MANAGEMENT ORGANIZATION

5-10 min