

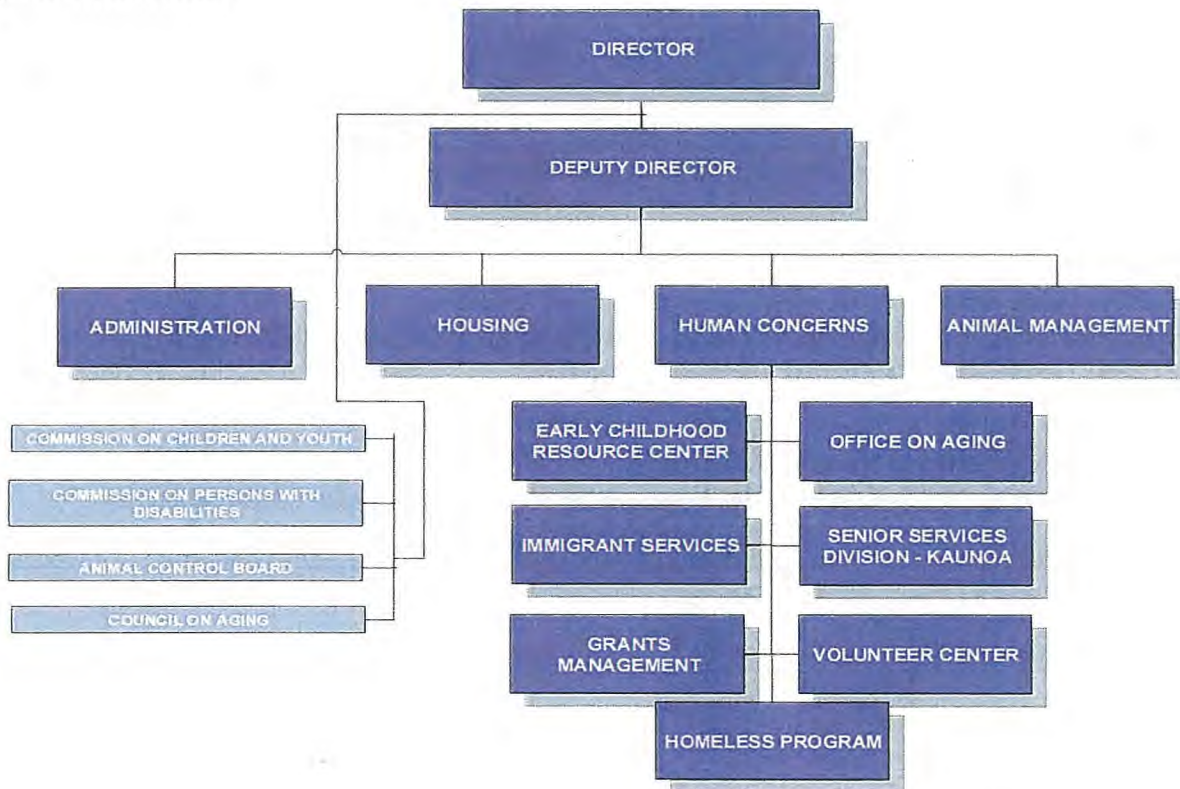
HOUSING AND HUMAN CONCERNS**COUNTY OF MAUI****Department Summary****Mission**

To support and enhance the social well-being of the citizens of Maui County.

Countywide Outcome(s)

The Department of Housing and Human Concerns supports the following countywide outcome(s):

- An Efficient, Effective and Responsive Government
- A Strong Diversified Economy
- A Prepared, Safe and Livable County
- A Healthy and Sustainable Community

Organization Chart**Strategies**

The Department of Housing and Human Concerns (DHHC) is highly cognizant of the fiscal accountability and program compliance of county-funded programs. As such, it insures fiscal responsibility to the citizens of Maui County. DHHC continually improves and promotes opportunities which support families, service providers, businesses, policy makers and the general public.

In addition, DHHC provides housing assistance to the residents of Maui County by facilitating the development of affordable housing, homeownership assistance and affordable rental programs. DHHC assists immigrants with the necessary tools needed to become tax paying citizens of the United States

Department Summary**Strategies (Cont'd)**

of America. DHHC has been instrumental in compassionate responses and in assisting our homeless individuals and families connect with agencies to house them and provide wrap around services. DHHC is also able to facilitate a roadmap for community volunteerism.

As part of Hawaii's Aging and Disability Resource Center (ADRC), DHHC is able to provide services to all persons, regardless of age, income and disability at a highly visible place where they will be able to find information on the full range of long term support options. The Older Americans Act of 1965, through the Office on Aging/ADRC, funds programs such as Meals on Wheels, Assisted Transportation and Congregate Meals facilitated by Kaunoa Senior Services. Maui County enables our seniors to experience their later years as the "best years".

Operations

The Department of Housing and Human Concerns works in collaboration with various federal, state and county agencies to accomplish its mission. DHHC is an active participant in statewide initiatives, meetings and dialogue groups such as the Early Learning Council, State Homeless Continuum of Care-Bridging the Gap (BTG), Hawaii Interagency Homeless Council (HICH), the Executive Office on Aging, Housing Directors' and Administrators' Council, United States Citizenship and Immigration Services (USCIS) and State Department of Health - Alcohol and Drug Abuse Division (ADAD).

External Factors Description

The demographics of Maui County continue to be a challenge, as we embrace and always keep in mind not only Maui island, but Molokai and Lanai as well. We are also cognizant of our Hana community that has unique needs.

The department continues to be up against economic constraints as federal and state funds are being cut, deliverables/programs are faced with increasing costs, and travel costs continue to rise.

The department's priorities for funding human service needs are food, shelter and safety. As non-profits continue to seek more county support, they are encouraged to collaborate with other funding sources to strive for the sustainability of their various programs.

Department Summary

Mission

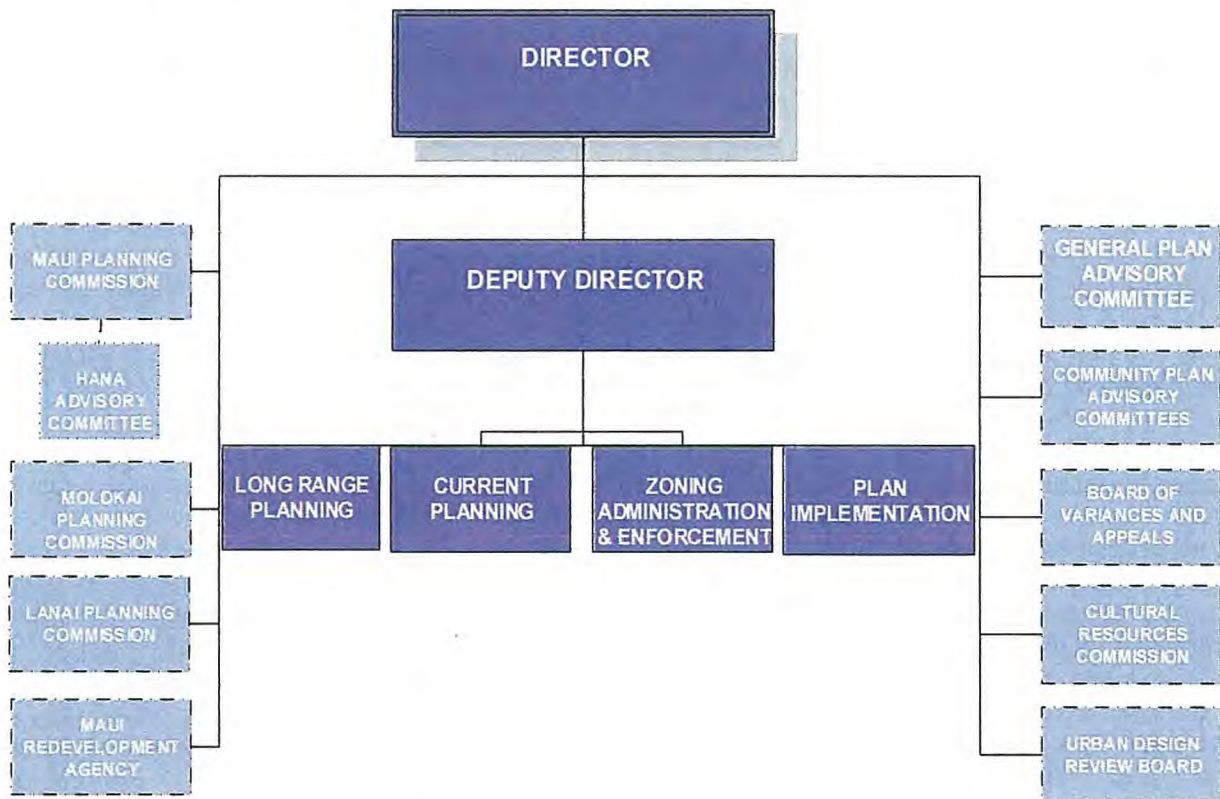
The purpose of the Department of Planning is to manage growth in a sustainable manner that balances our economy, culture and environment.

Countywide Outcomes

The Department of Planning supports the following countywide outcomes:

- An Efficient, Effective and Responsive Government
- A Strong Diversified Economy
- Suitable Public Infrastructure
- A Prepared, Safe and Livable County
- A Healthy and Sustainable Community

Organization Chart



Strategies

The Department of Planning utilizes four primary strategies to accomplish its mission to enhance the quality of life for the citizens of Maui County:

1. Prepare long-range plans, such as the Countywide Policy Plan, Maui Island Plan, regional community plans, and various master plans. The development of these plans is an open public process with extensive community participation and involvement, as these plans will guide and direct development and growth for many years.

Department Summary**Strategies (Cont'd)**

2. Administer and implement long-range plans by drafting proposed ordinances and tracking development.
3. Review and process applications for a wide variety of developments, from small bed-and-breakfast operations to large commercial or industrial projects. Applications are carefully considered with respect to their surrounding uses, potential impacts and consistency with long-range plans.
4. Administer and enforce zoning and other land use regulations to ensure that all applicable laws and rules are being followed. Enforcement is generally complaint-based so that the department can effectively respond to concerns raised by the public.

The Department aims to provide quality service to the public by offering accurate and timely information in a friendly and professional manner.

Operations

In order to accomplish its strategies, the Department of Planning follows the mandates of the state and county land use laws that it is charged with administering, primarily Hawaii Revised Statutes Chapters 205 and 205A and Maui County Code Title 19.

The department advises the Mayor and the County Council on all land use planning issues. It also staffs and administers eight boards and commissions: the Maui, Molokai and Lanai Planning Commissions; the Hana Advisory Committee (HAC); the Cultural Resources Commission (CRC); the Board of Variances and Appeals (BVA); the Urban Design Review Board (UDRB); and the Maui Redevelopment Agency (MRA). Most of these agencies have final approval authority on many development applications, such as variances, special management area use permits and county special use permits, and most also make recommendations to the Maui County Council on actions that are approved by ordinance, such as changes in zoning and conditional permits.

The department is comprised of five divisions. The Administration Division oversees all operations of the department and is responsible for drafting updates to the zoning code and administrative rules. The Current Planning Division (Current) is responsible for processing administrative permit applications, as well as development applications that are reviewed by the planning commissions and County Council. Current is also responsible for providing staff support to the three planning commissions as well as HAC, UDRB and MRA. The Long Range Planning Division (LRD) is responsible for drafting comprehensive plans; maintaining the department's geographic information system (GIS) database and preparing maps in support of all planning functions; and providing staff support to the CRC, as well as the General Plan Advisory Committee and community plan advisory committees when they are empanelled. The Plan Implementation Division (PID) is responsible for tracking and implementing long-range plans. The Zoning Administration and Enforcement Division (ZAED) processes administrative permits such as special management area exemptions and flood and sign permits; reviews subdivision, building and other construction permits; enforces zoning and land use regulations; responds to routine development inquiries; processes discretionary variance applications and appeals; and provides staff support to the BVA.

All of the department's divisions are located at One Main Plaza in Wailuku. Administration is located in Suite 315, ZAED is located in Suite 335, LRD is located in Suite 601, Current is located in Suite 619 and PID is located in Suite 640.