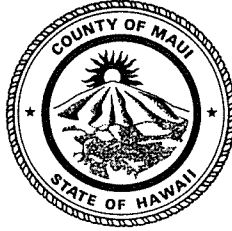


ALAN M. ARAKAWA  
Mayor

RECEIVED

2017 OCT 10 PM 4: 52

OFFICE OF THE  
COUNTY COUNCIL



PATRICK K. WONG  
Corporation Counsel

EDWARD S. KUSHI  
First Deputy

LYDIA A. TODA  
Risk Management Officer  
Tel. No. (808) 270-7535  
Fax No. (808) 270-1761

DEPARTMENT OF THE CORPORATION COUNSEL  
COUNTY OF MAUI

200 SOUTH HIGH STREET, 3<sup>RD</sup> FLOOR

WAILUKU, MAUI, HAWAII 96793

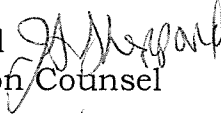
EMAIL: CORPCOUN@MAUICOUNTY.GOV

TELEPHONE: (808) 270-7740

FACSIMILE: (808) 270-7152

---

MEMO TO: Yuki Lei K. Sugimura, Chair  
Policy, Economic Development, and Agriculture Committee

FROM: Jerrie L. Sheppard   
Deputy Corporation Counsel

DATE: October 10, 2017

SUBJECT: **DONATION OF A 2005 FORD 350 ECONOLINE VAN TO  
DEPARTMENT OF POLICE (PEA-44)**

Attached please find the revised, original resolution entitled "Authorizing Acceptance of the Donation of a 2005 Ford 350 Econoline Van for the POI and PALS Programs on Molokai, from the Queen Liliuokalani Children's Center to the County of Maui, Department of Police, Pursuant to Chapter 3.56, Maui County Code", approved as to form and legality, for your consideration.

In advance, thank you for your attention to this matter. If you have any questions or require additional information, please contact me.

Attachment

2017-0098

PEA-44 2017-10-10 Memo to Chair

# Resolution

No. \_\_\_\_\_

AUTHORIZING ACCEPTANCE OF THE DONATION OF A 2005 FORD 350 ECONOLINE VAN FOR THE POI AND PALS PROGRAMS ON MOLOKAI, FROM THE QUEEN LILIUOKALANI CHILDREN'S CENTER TO THE COUNTY OF MAUI, DEPARTMENT OF POLICE, PURSUANT TO CHAPTER 3.56, MAUI COUNTY CODE

WHEREAS, the Queen Liliuokalani Children's Center on Molokai wishes to donate a 2005 Ford 350 Econoline Van for the POI and PALS programs on Molokai, as reflected in Exhibit "1", attached hereto; and

WHEREAS, the estimated value of the 2005 Ford twelve passenger 350 Econoline van is approximately \$5,289.00; and

WHEREAS, currently the program participants on Molokai are transported to and from the POI sites using marked department vehicles which can accommodate four participants, and recently there were nineteen participants. The PALS program participants arrange for their own transportation to the police station.

WHEREAS, the donated Econoline van will give the ability to expand both programs by allowing the accommodation and service for more program participants; and

WHEREAS, Chapter 3.56, Maui County Code, authorizes the Council to accept gifts and donations on behalf of the County; now, therefore,


Resolution No. \_\_\_\_\_

BE IT RESOLVED by the Council of the County of Maui:

1. That it hereby expresses its appreciation and accepts the aforesaid donation on behalf of the County of Maui; and

2. That certified copies of this resolution be transmitted to the Mayor, the Director of Finance, the Chief of Police, and Queen Liliuokalani Children's Center.

APPROVED AS TO FORM  
AND LEGALITY:

  
\_\_\_\_\_  
JERRIE L. SHEPPARD  
Deputy Corporation Counsel  
County of Maui  
2017-0974

Admin/Lasky ~~Wanted w/c advised &~~  
Resolution Process.  
A4

ed 7/31/17

TO : TIVOLI FAAUMU, CHIEF OF POLICE, MAUI COUNTY

VIA : CHANNELS - RECOMMEND MPD GO THROUGH THE PROCESS OF ACCEPTING THIS VEHICLE DONATION- VEHICLE WOULD BE PUT TO GOOD USE ON MOLOKAI.

FROM : JAMIE WINFREY, ACTING CAPTAIN, MOLOKAI CORP COUNSEL AND COUNTY COUNCIL APPROVAL WOULD BE NEEDED- A4 7/31/17

SUBJECT : VEHICLE DONATION

Sir, this To-From is being submitted in regards to the above matter.

On July 25, 2017, Officer Jonathan Aquino informed me, Lani Ozaki, Manager for the Queen Lilioukalani Children Center wanted to speak with me on July 26, 2017, between the hours of 0800-1300, regarding a vehicle she wanted to donate to the Maui Police Department.

On July 26, 2017 at approximately 1025 hours, I met with Ozaki who stated she has been working with Officers Aquino and Sepulona Falealii in regards to the P.O.I. program. Through her interaction with them, she also discovered we had a PAL program. Ozaki said their organization has an older van they don't use and wanted to donate it to the Maui Police Department so we can use it transport the kids to and from our programs.

Ozaki described the vehicle as a 2005, 12 passenger, Ford 350 Econoline van, with under 80,000 miles on it. The van is in perfect condition and has no mechanical issues. I explained to Ozaki that before the police department could accept such a generous gift it would have to be approved by the County Council. Ozaki stated she would hold on to the van until she hears from us.

I took several photos of the outside and inside of the van. The van has 66713 miles on it. It was bearing State of Hawaii plates, NVA 941, the Vehicle Identification Number is 1FBNE31LX5HA83533, and its registered to Queen Lilioukalani Children's Center. It appears to be in good working condition and started right up. According to the Kelly Blue Book, the vehicle's estimated value is approximately \$5,289.00. (See attached)

Currently, we transport juveniles to and from the P.O.I. sites utilizing marked department vehicles. Our vehicles can only accommodate four juveniles. Last weekend (07/22/17), we had nineteen participants. With the PALS program, the juveniles arrange for their own transportation to the police station.

I believe with this donation, it will give us the ability to expand both programs by allowing us to accommodate/service more juveniles.

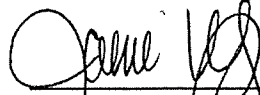
Since the vehicle is only a twelve passenger vehicle, a type three license will suffice.

Submitted for your consideration.

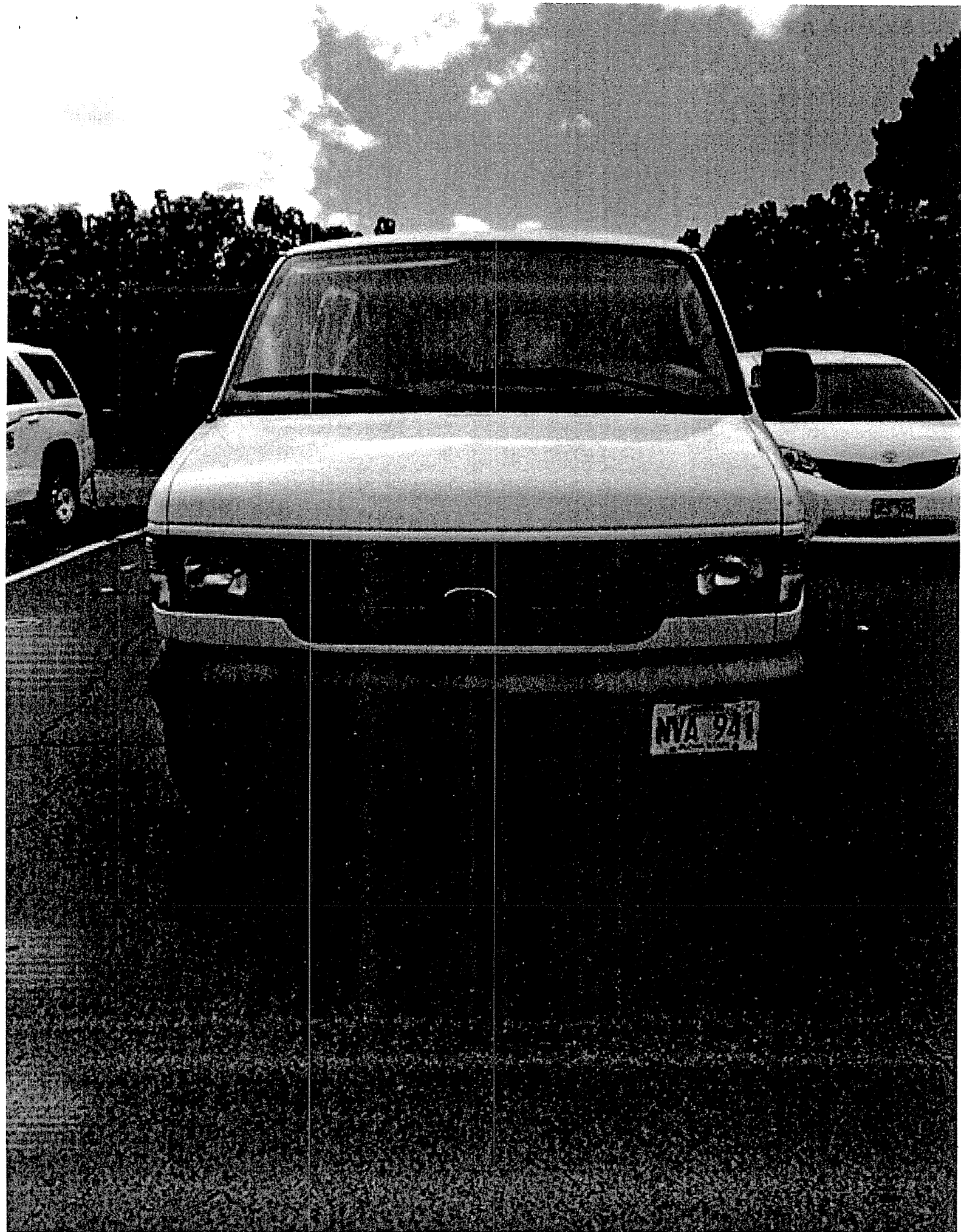
ADMIN SERVICES  
AUG 2 '17 AM 7:33 AM

EXHIBIT " 1 "

**Respectfully Submitted,**

A handwritten signature in black ink, appearing to read 'Jamie Winfrey', written over a horizontal line.

**Jamie WINFREY E#2342  
A/Capt., Molokai  
07/27/17 @ 1401 Hours**







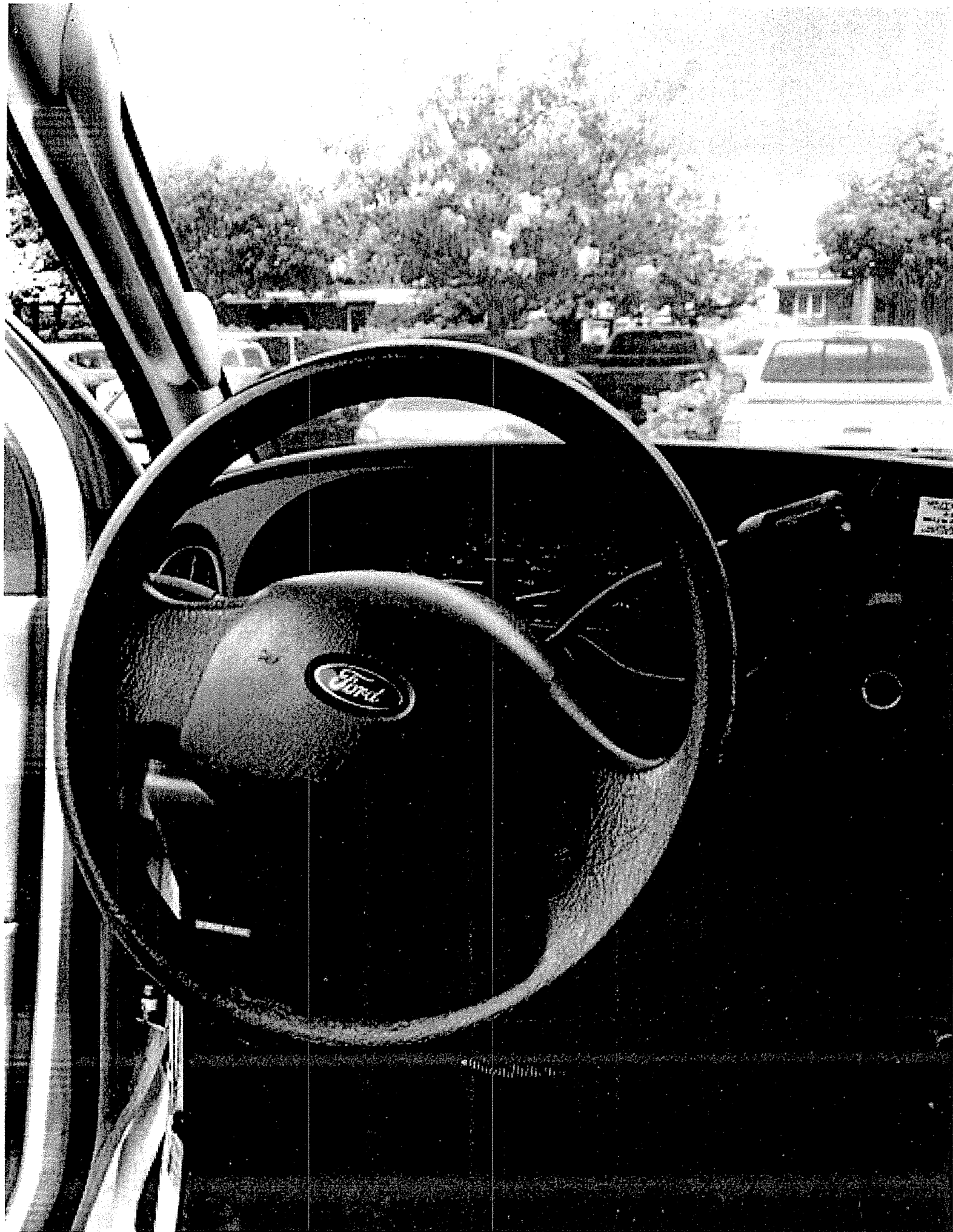
NVA 941

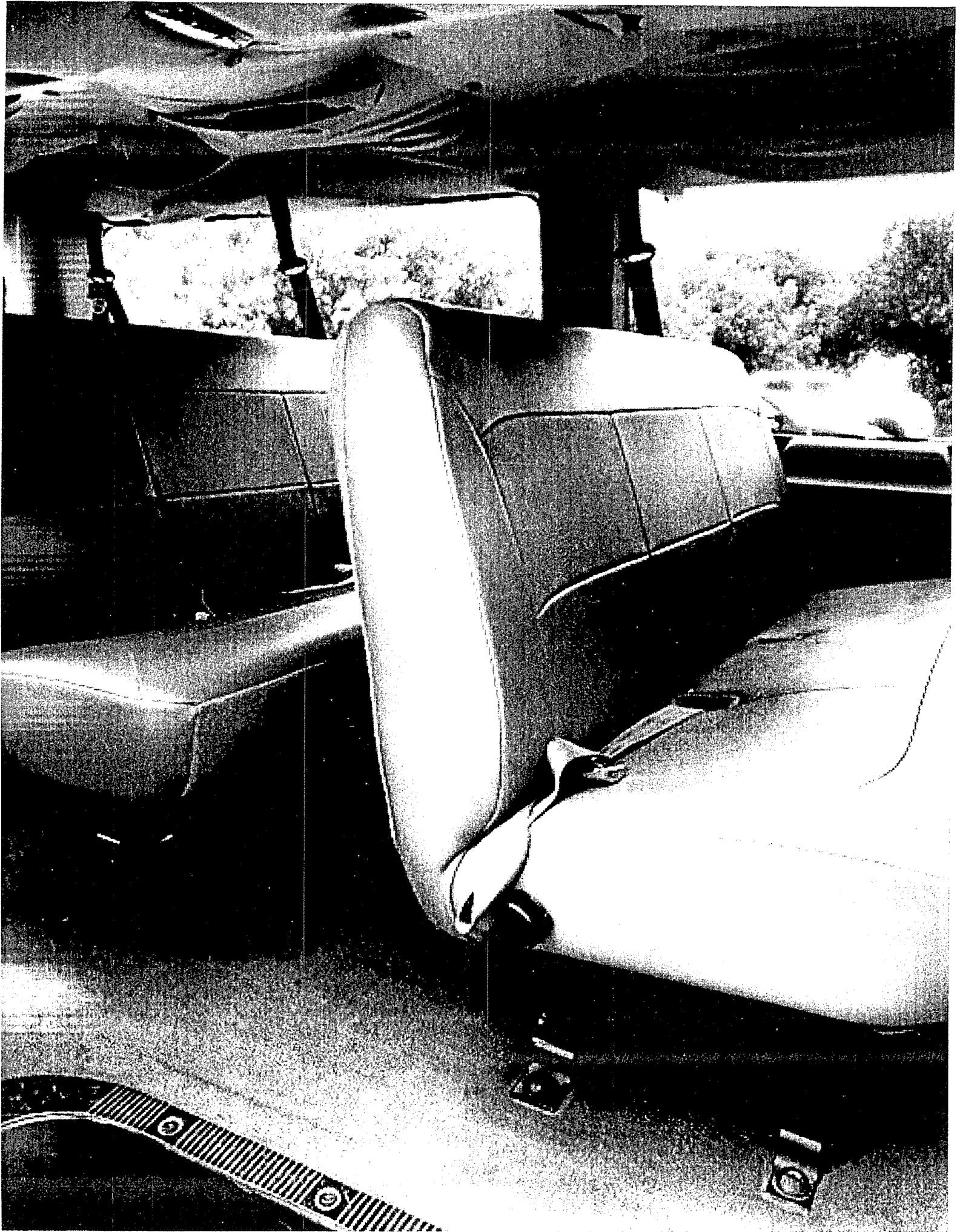
E-250

511







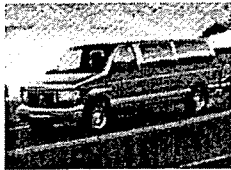






Advertisement

## Used 2005 Ford E350 Super Duty Passenger Pricing Report

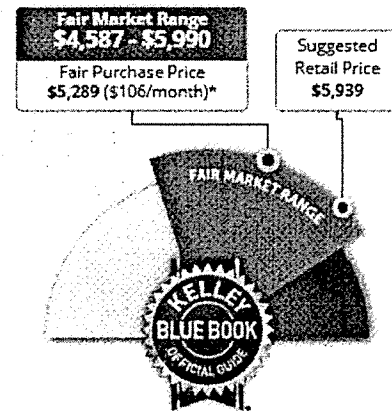


Style: XL Van 3D  
Mileage: 66,000

### Vehicle Highlights

Fuel Economy: N/A	Max Seating: 12
Doors: 3	Engine: V8, 5.4 Liter
Drivetrain: RWD	Transmission: Automatic
EPA Class: Vans, Passenger Type	Body Style: Van
Country of Origin: United States	Country of Assembly: United States

### Buy from a Dealer



Based on Good Condition or Better

Fair Purchase Price valid for your area through 7/27/2017

### Your Configured Options

Our pre-selected options, based on typical equipment for this car.

✓ Options that you added while configuring this car.

#### Engine

V8, 5.4 Liter

#### Transmission

Automatic

#### Drivetrain

RWD

#### Braking and Traction

ABS (4-Wheel)

#### Comfort and Convenience

Air Conditioning

Power Windows

#### Steering

Power Steering

Tilt Wheel

#### Entertainment and Instrumentation

AM/FM Stereo

#### Safety and Security

Dual Air Bags

#### Seats

12-Passenger Seating

#### Roof and Glass

Privacy Glass

#### Wheels and Tires

Steel Wheels

### Glossary of Terms

**Suggested Retail Price** - Suggested Retail Price is representative of dealers' asking prices. It assumes that the vehicle has been fully reconditioned and takes into account the dealers' profit and costs for advertising. The final sale price will likely be less, depending on the car's actual condition, popularity, warranty and local market factors.

**Kelley Blue Book® Fair Purchase Price (Used Car)** - This is the price people are typically paying a dealer for a used car with typical mileage in good condition or better. This price is based on actual used-car transactions and adjusted regularly as market conditions change.

**Fair Market Range (Used Car)** - The Fair Market Range is Kelley Blue Book's estimate of what you can reasonably expect to pay this week for a vehicle with typical mileage and configured with your selected

#### Tip:

Kelley Blue Book pricing is based on actual transactions and adjusted regularly as market conditions change.

options, excluding taxes, title and fees when purchasing from a dealer. Each dealer sets and controls its own pricing.

**Kelley Blue Book® Certified Pre-Owned (CPO) Price** - This is the dealers' asking price of a car that meets the manufacturers' CPO program, which includes an additional warranty beyond the original factory warranty. It includes certification program costs, dealer profits and retail costs. The final price depends on the car's actual condition, popularity, warranty and local market factors.

**Fair Market Range (CPO)** - The Fair Market Range is Kelley Blue Book's estimate of what you can reasonably expect to pay this week for this year, make and model Certified Pre-Owned vehicle with typical mileage configured with your selected options, excluding taxes, title and fees. Each dealer sets and controls its own pricing.

**Kelley Blue Book® Private Party Price** - This is the starting point for negotiation of a used-car sale between a private buyer and seller. This is an 'as is' value that does not include any warranties. The final price depends on the car's actual condition and local market factors.


**Private Party Range** - The Private Party Range is Kelley Blue Book's estimate of what you can reasonably expect to pay this week for a vehicle with typical mileage in the selected condition and configured with your selected options, excluding taxes, title and fees when purchasing from a private party.

**Excellent Condition** - 3% of all cars we value. This car looks new and is in excellent mechanical condition. It has never had paint or bodywork and has an interior and body free of wear and visible defects. The car is rust-free and does not need reconditioning. Its clean engine compartment is free of fluid leaks. It also has a clean title history, has complete and verifiable service records and will pass safety and smog inspection.

**Very Good Condition** - 23% of all cars we value. This car has minor wear or visible defects on the body and interior but is in excellent mechanical condition, requiring only minimal reconditioning. It has little to no paint and bodywork and is free of rust. Its clean engine compartment is free of fluid leaks. The tires match and have 75% or more of tread. It also has a clean title history, with most service records available, and will pass safety and smog inspection.

**Good Condition** - 54% of all cars we value. This car is free of major mechanical problems but may need some reconditioning. Its paint and bodywork may require minor touch-ups, with repairable cosmetic defects, and its engine compartment may have minor leaks. There are minor body scratches or dings and minor interior blemishes, but no rust. The tires match and have 50% or more of tread. It also has a clean title history, with some service records available, and will pass safety and smog inspection.

**Fair Condition** - 18% of all cars we value. This car has some mechanical or cosmetic defects and needs servicing, but is still in safe running condition and has a clean title history. The paint, body and/or interior may need professional servicing. The tires may need replacing and there may be some repairable rust damage.

Search:  

[FAQ](#) | [Contact Us](#) | [About Us](#) | [Careers](#) | [Corporate](#) | [Advertising](#) | [Media](#) | [Site Map](#) | [Mobile](#) | [KBB Portugal](#)

Follow Us       

© 1995-2017 Kelley Blue Book Co.®, Inc. All rights reserved. Copyrights & Trademarks | [Terms of Service](#) | [Privacy Policy](#) | [Linking Policy](#) | [Ad Choices](#)

© 2017 Kelley Blue Book Co., Inc. All rights reserved. 7/21/2017-7/27/2017 Edition for Hawaii 96748. The specific information required to determine the value for this particular vehicle was supplied by the person generating this report. Vehicle valuations are opinions and may vary from vehicle to vehicle. Actual valuations will vary based upon market conditions, specifications, vehicle condition or other particular circumstances pertinent to this particular vehicle or the transaction or the parties to the transaction. This report is intended for the individual use of the person generating this report only and shall not be sold or transmitted to another party. Kelley Blue Book assumes no responsibility for errors or omissions. (v.17073)

M55L/1/NVA941

PLATE: NVA941 STATUS: A SPEC-PLT: EMBLEM: NVA941 EXPIR-DATE: 01 18

VIN: 1FBNE31LX5HA83533 MAKE: FORD TYPE: BUS YR-MODEL: 05 COLOR: Q

RO-NAME: QUEEN LILIUOKALANI CHILDRENS CENTER PHON-CODE: Q500L COUNTY: M

RO-ADDRESS: P O BOX 55 RO-CITY: KAUNAKAKAI HI 96748

LO-NM: SAME SF-EXP: 03 18 TCI-NO: NVA941-05

LO-ADDRESS: LO-CITY:

1ST-SOLD: 02 04 05 DT-ISS: 01 23 17 TX-RT: P HVUC: TVB: BAD-CK: SP-VEH:

NET-WT: 05700 GVW: 000000 EXMPT: FUEL: G ODOM: 000045 ODOM-EXC: N ODOM-DSC: N

MO-TX: 12 TAX-COLL: 330.00 PENALTY-AMT: 0.00 PLT-EMB: 28.00 OT-PND:

PRI-PT: XRF-PT: VO: N MO: N DUP-DT: LS-UDT: 03 03 17  
ELT KEY:

F1:MPL F2:MOT F3:MCP F5:MFC F6:MAC F7:MCMT F10:MNR F11:MVRN F12:MFEE