



MARINE INSTITUTE
MAUI OCEAN CENTER

Marine Conservation & Research Center

Sea Turtle Hospital • Coral Nursery • Research Laboratories • Educational Classrooms





Our Mission

To inspire lifelong environmental stewardship and ensure the survival of coral reefs and sea turtles in Hawai'i through science-based conservation efforts, education, and outreach



SEA TURTLES

Rescue • Rehabilitation • Research • Education

- In partnership with Federal government under NOAA Fisheries permit
- MOC Marine Institute is the only sea turtle rehabilitation facility in the state of Hawai'i
- Sick and injured sea turtles are airlifted statewide to MOC Marine Institute
- 648 sea turtles were rescued on Maui from 2019 – 2021
- Current research collaborations with NOAA Fisheries and Universities
- More than 500 students from Maui educated in 2021



CORAL REEFS

Restoration • Conservation • Research • Education

- Maintains one of only 4 land-based coral nurseries in the U.S.
- Coral restoration projects statewide to restore damaged coral reefs
- In partnership with DLNR, maintain a repository for rare and endemic corals of Hawai'i
- Research partnerships with University partners, including University of Hawai'i and Stanford University
- Educated over 500 Maui students in 2021



Ensuring a healthy ocean for our future generations

- Developed and launched the Fishing Line Recycling Program on Maui in 2018
- In partnership with DLNR, MOC Marine Institute responds to reports and collects abandoned fishing nets on the island of Maui
- MOC Marine Institute hosts monthly reef and beach cleanups
- Developed and launched the Honu Hero Beach Cleanup Program in 2020





MARINE INSTITUTE
MAUI OCEAN CENTER

Living in an island community, we all heavily depend on a healthy ocean for the air we breathe, recreational activities, food for our families, fresh water, and to support our economy

MOC Marine Institute has outgrown their current facilities and need to expand to continue their important work for our community



Conceptual Design



CONCEPTUAL 3D STREET VIEW
ALONG MA'ALAEA RD LOOKING SOUTH WEST

Four Floors (Approx. 34,000 sq ft)

1. Marine Animal Hospital
 - Associated office space
2. Coral Nursery and Laboratory
 - Associated office space
3. Classrooms and Research Laboratories
4. Meeting Room, Dormitories for Visiting Scientists, Kitchenette, Office
5. Rooftop – Recreation Area, A/C Equip.

Ma'alaea and Maui Ocean Center



Three Parcels

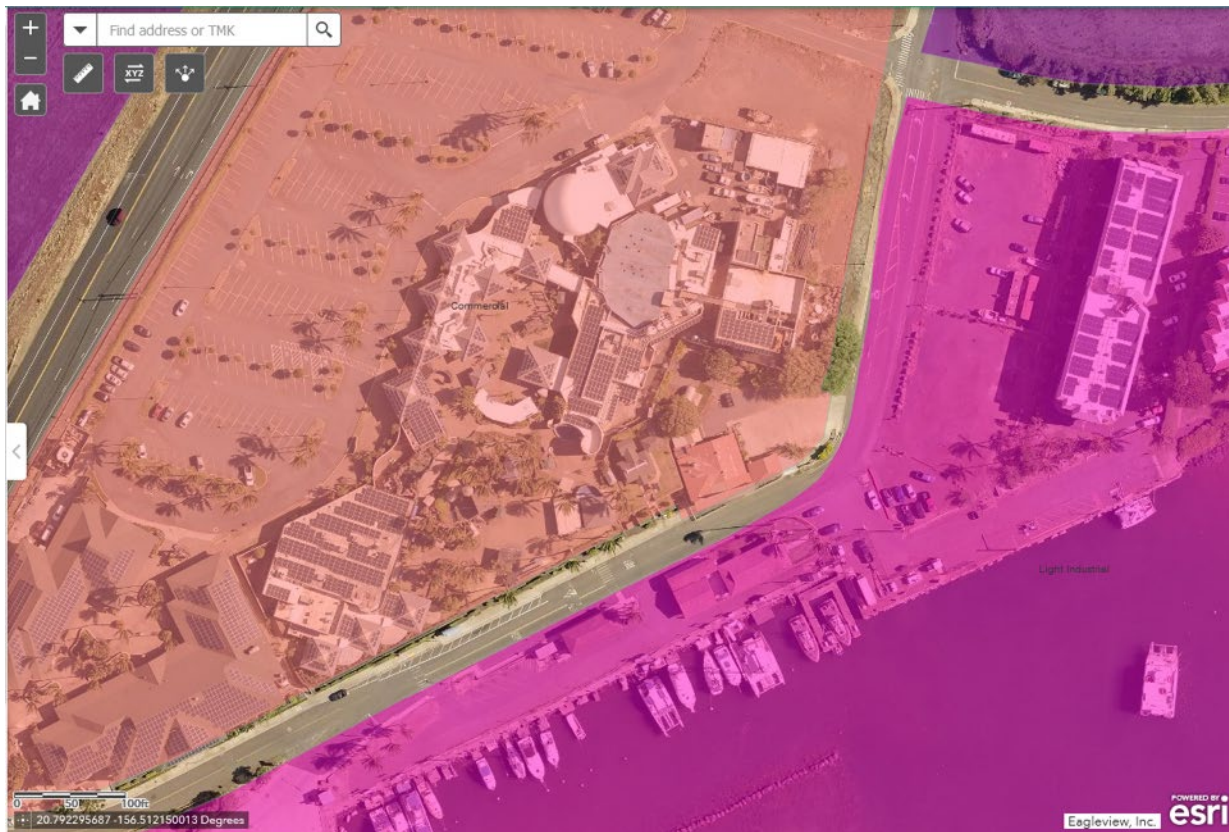
5.066 acres

0.24 acre

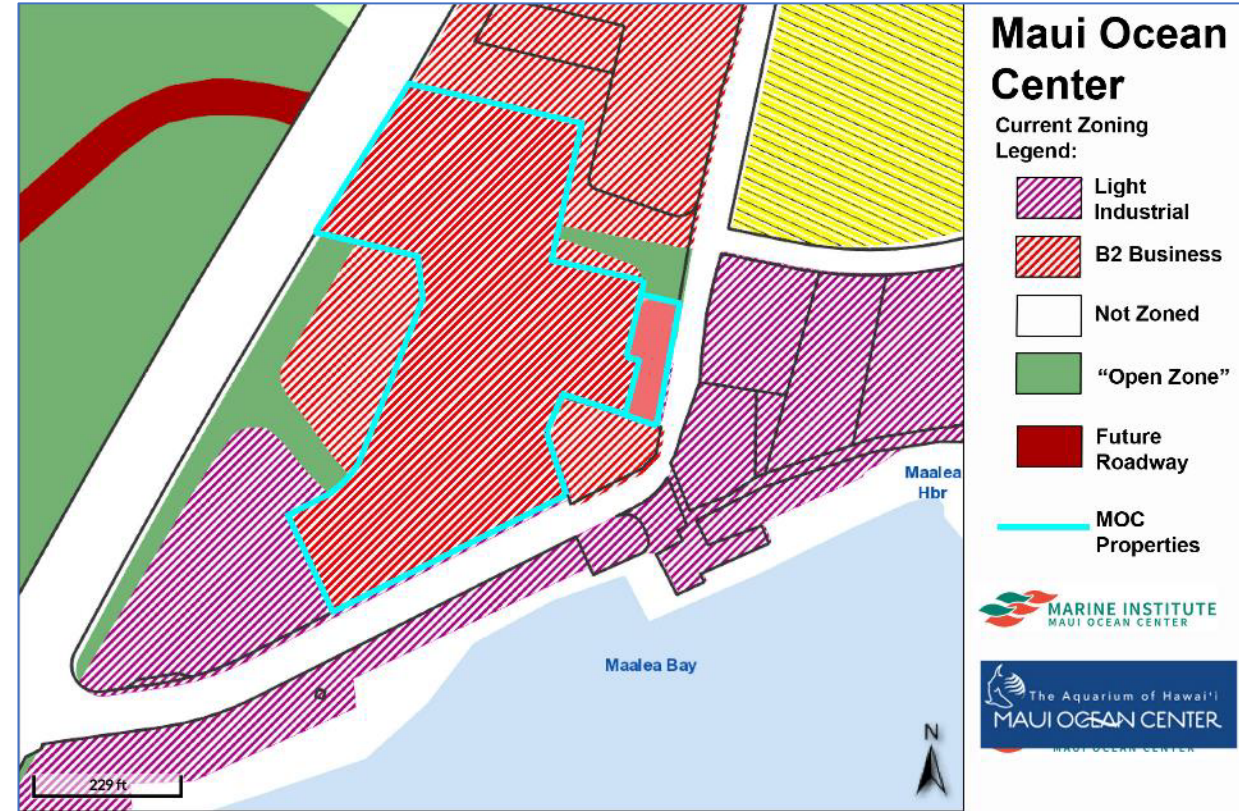
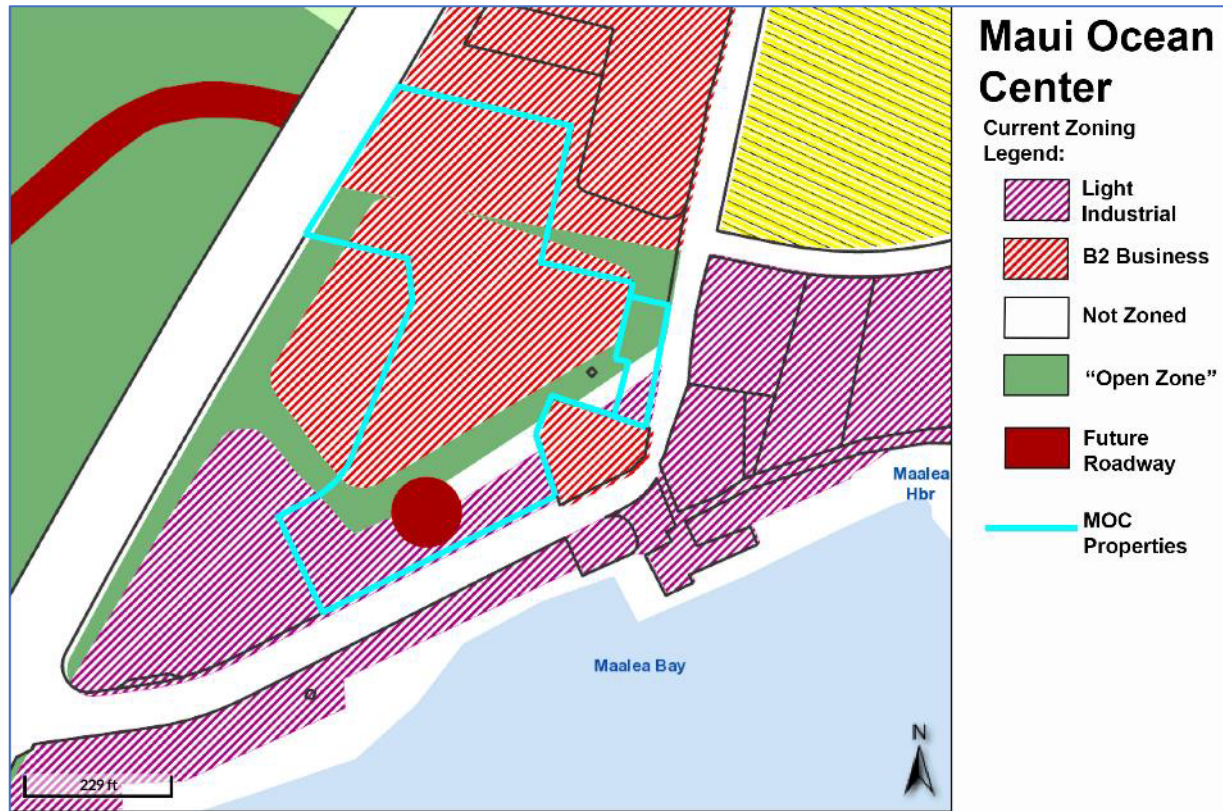
0.34 acre (not part of this request)

Community Plan

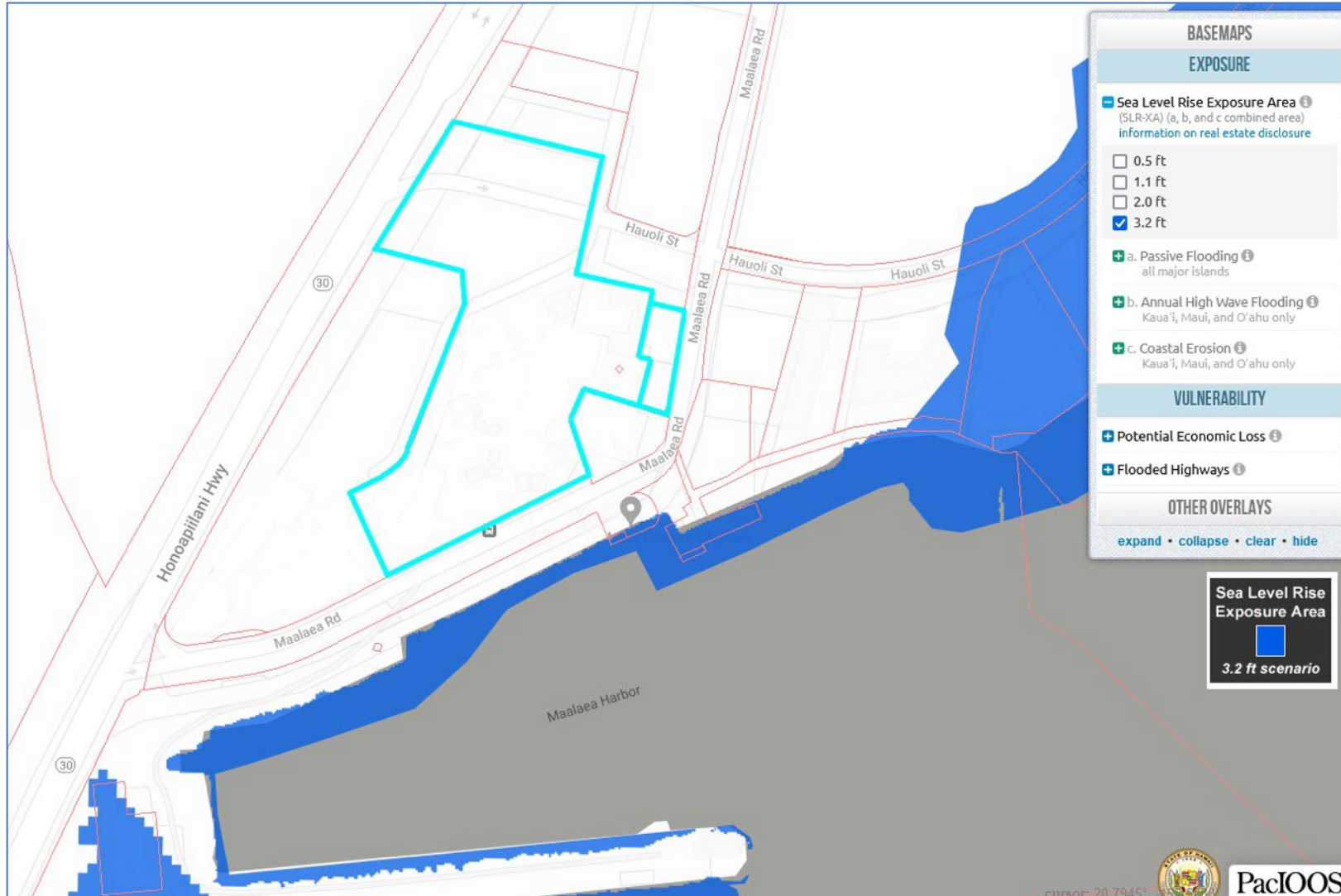
Zoning



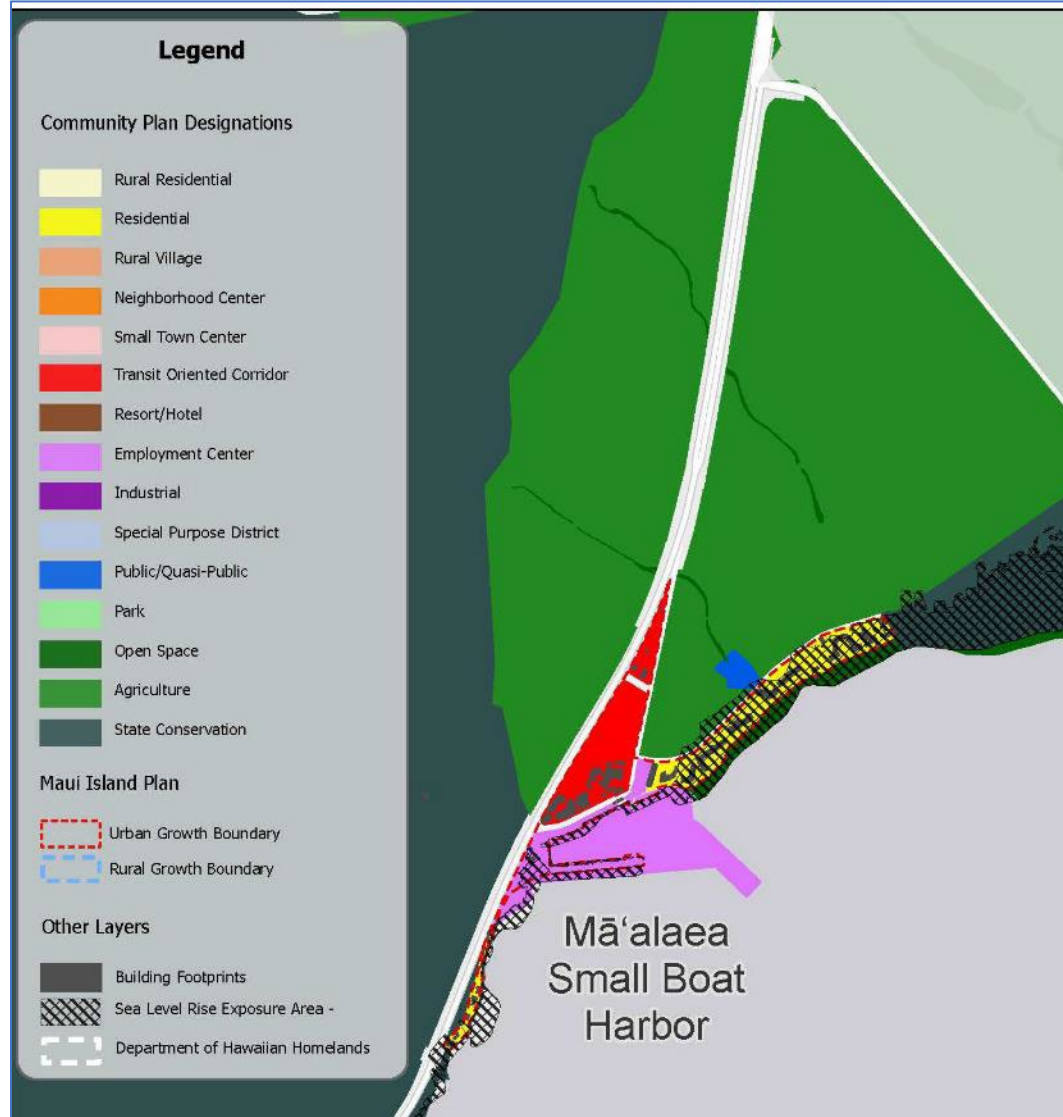
Zoning: Before and After



Sea Level Rise Exposure Area



Draft Community Plan



Entitlements Needed



- Change of zoning to **B-2** for the large parcel, **B-3** for the smaller for a new facility:
 - Animal hospitals including boarding
 - Education, specialized
 - “Quasi-public use” or “quasi-public facility” defined as a use conducted by, or a facility or structure owned or operated, by a nonprofit...which provides educational, cultural, recreational, religious, or other similar types of public services.
 - Want to ensure their housing for visiting scientists
- Special Management Area Use Permit – Maui Planning Commission



Mahalo for your time
Questions?



MARINE INSTITUTE
MAUI OCEAN CENTER

MOC Marine Institute
Maui, Hawai'i
www.mocmarineinstitute.org

Instagram: @mocmarineinstitute
Facebook: @mocmarineinstitute

Sea Turtle Stranding Hotline
808-286-2549

PSLU Committee

From: mauiwill@gmail.com
Sent: Tuesday, November 15, 2022 12:00 PM
To: PSLU Committee
Subject: Presentation for PSLU-72- PDF
Attachments: PSLU Intro+TC_compressed.pdf

Here is the PDF of the PowerPoint for PSLU 72

Will Spence
808-280-2724