

DEPARTMENT OF
HOUSING AND HUMAN CONCERNS
COUNTY OF MAUI

MICHAEL P. VICTORINO
Mayor

LORI TSUHAKO
Acting Director

LINDA R. MUNSELL
Deputy Director


RECEIVED

2019 APR 17 PM 12:58

200 SOUTH HIGH STREET • WAILUKU, HAWAII 96793 • PHONE (808) 270-7805 • FAX 270-7165 • EMAIL director.hhc@mauicounty.gov

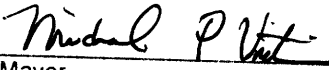
OFFICE OF THE
COUNTY COUNCIL

April 16, 2019

Ms. Michele M. Yoshimura 
Budget Director, County of Maui
200 South High Street
Wailuku, Hawaii 96793

Honorable Michael P. Victorino
Mayor, County of Maui
200 South High Street
Wailuku, Hawaii 96793

APPROVED FOR TRANSMITTAL



Mayor Date

For Transmittal to:

Honorable Keani Rawlins-Fernandez
Chair, Economic Development and Budget Committee
Maui County Council
200 South High Street
Wailuku, Hawaii 96793

Dear Chair Rawlins-Fernandez:

**SUBJECT: REQUESTS/QUESTIONS FROM THE APRIL 10, 2019 MEETING (HC-8)
(EDB-1)**

This letter is in response to correspondence dated April 12, 2019 requesting the Department's responses to the questions raised at the April 10, 2019 EDB Committee meeting regarding the \$500,000 appropriation to the Boys & Girls Club Paukukalo (Index Code 914217B, Sub-Object Code 6317). The responses below were generated by the prospective grantee, the Boys and Girls Club of Maui.

1. Is this a one-time appropriation? (MM)

The \$500,000 request is a portion of the full amount needed for construction of the Clubhouse facility (approximately \$3,250,000). Therefore, Boys & Girls Club of Maui (BGCM) may need to request additional funds from the County of Maui, in addition to other sources including the State of Hawaii, foundations, and private donors. BGCM has been in negotiations with two foundations that are interested in donating to the construction project at around \$1 million each, and there are plans to implement a Capital Campaign to raise a portion of the required amount if needed. The anticipated completion date for the Paukukalo Clubhouse is 2021.

2. What is the projected total cost of the Boys & Girls Club of Maui Clubhouse? (MM)

The total cost of the project is currently estimated at \$3,250,000 for construction. Planning and design will have been completed prior to the start of the construction project.

3. Please provide a detail description of the proposed facility. (MM)

Boys & Girls Clubs of Maui will construct a stand-alone, full-service Clubhouse for the Paukukalo Club. The facility currently being used for Club activities is owned by the Department of Hawaiian Home Lands (DHHL).

In 2011, BGCM and the DHHL signed a 35-year lease agreement for the use of the property. DHHL recently agreed to extend the lease to at least 50 to 60 years. Additionally, we have agreements with the Paukukalo Hawaiian Homesteaders Association and the Department of Hawaiian Home Lands for approval to build the facility on this location.

The Clubhouse will be built on the existing site of the covered basketball court, adjacent to the Hawaiian Homes Community Center that now houses the Paukukalo Club activities. The structure will be two stories tall. Activities will take place on the first floor, with the second floor roughed in for future expansion. A copy of the preliminary ground floor plan is attached. The second floor will be used for storage until that section is completed at a later time.

The Paukukalo Clubhouse, which opened in 2004, has the second highest membership of the six BGCM Clubs at approximately 311 this year. It has the highest Average Daily Attendance (ADA) at between 160 and 180 this year. This is an increase of, at a minimum, 20% over three years ago. The growth trend is anticipated to continue.

The new Clubhouse will serve more than 500 total members, with an average daily attendance of at least 220. This will greatly increase the number of Maui youth served by the Club, and the expanded facility will enable BGCM to provide many more programs and activities to meet the needs of the young members daily. Specific rooms will be set up for homework and tutoring, computers, fitness and exercise, a full kitchen, large games such as pool and ping pong, separate bathrooms for girls, boys and staff, and staff office spaces. All of these are lacking in the current facility.

During the school year, because other organizations and activities are able to use the building, the Clubhouse is only open for 4 hours after school (6 on early-release days), unlike the other BGCM Clubhouses that are open for 5 hours after school (7 on early-release days). Likewise, during the summer, Paukukalo can only be open for 5 hours each day, far less than the 9 hours enjoyed by members at the other Clubhouses.

The current facility is one open room with no separation other than small orange cones set out each day to represent "walls" and boundaries, meaning all of the activities that take place inside, such as homework assistance, the STEM programming, and reading, are done in an environment that is noisy. There is no

Honorable Keani Rawlins-Fernandez
Chair, Economic Development and Budget Committee
Maui County Council
April 16, 2019
Page 3 of 3

computer room, just small laptops for members to use. While the other Clubs take advantage of an operational kitchen to serve snacks and meals for members, Paukukalo cannot store any food supplies and must bring these items in daily.

Additionally, staff members have to set up and break down the tables and chairs each day, time that could be much better spent working directly with the young members. By the time the building is closed each day, it has to appear that no one has been using it, with everything stored away and the floors washed. Again, that is paid staff time that takes away from the time spent on programs for the members.

Educational attainment is an important goal at all BGCM facilities, which provide a multitude of programs that address the educational needs of members. For the second year in a row, Paukukalo members enrolled in the very important tutoring program had to be driven to the Central Clubhouse in Kahului because the classrooms that were used for tutoring, located in another building on the Hawaiian Homeland site and used with special permission, are now being used by another agency. That further limits members' time for Club activities and has, unfortunately, led to less participation by the members signed up for the tutoring sessions.

One of the unique features of the Paukukalo Clubhouse, and one that explains their high membership, is that it caters to the students who attend Hawaiian Immersion schools. Because Club staff are also Native Hawaiian language speakers, they help with homework during our mandatory daily Power Hour homework assistance program. And, as the Immersion students transition to English language schools, staff with experience and expertise are available to assist them.

Paukukalo is also one of two BGCM Clubhouses that allow members ages 6 to 8 in addition to the typical 9 to 17 years of age (the other is Kahekili Terrace in the public housing complex).

Since its founding in 2000, Boys & Girls Clubs of Maui has been responsible for the construction of four other Clubhouses (Youth Centers), located in Haiku, Makawao, Kahului and Lahaina. This new Clubhouse will enable BGCM to continue to fulfill its mission: *To enable all young people, especially those who need us most, to realize their full potential as productive, caring, and responsible citizens.*

Thank you for the opportunity to provide this information. Please feel free to contact me at Ext. 7805 should you have any questions.

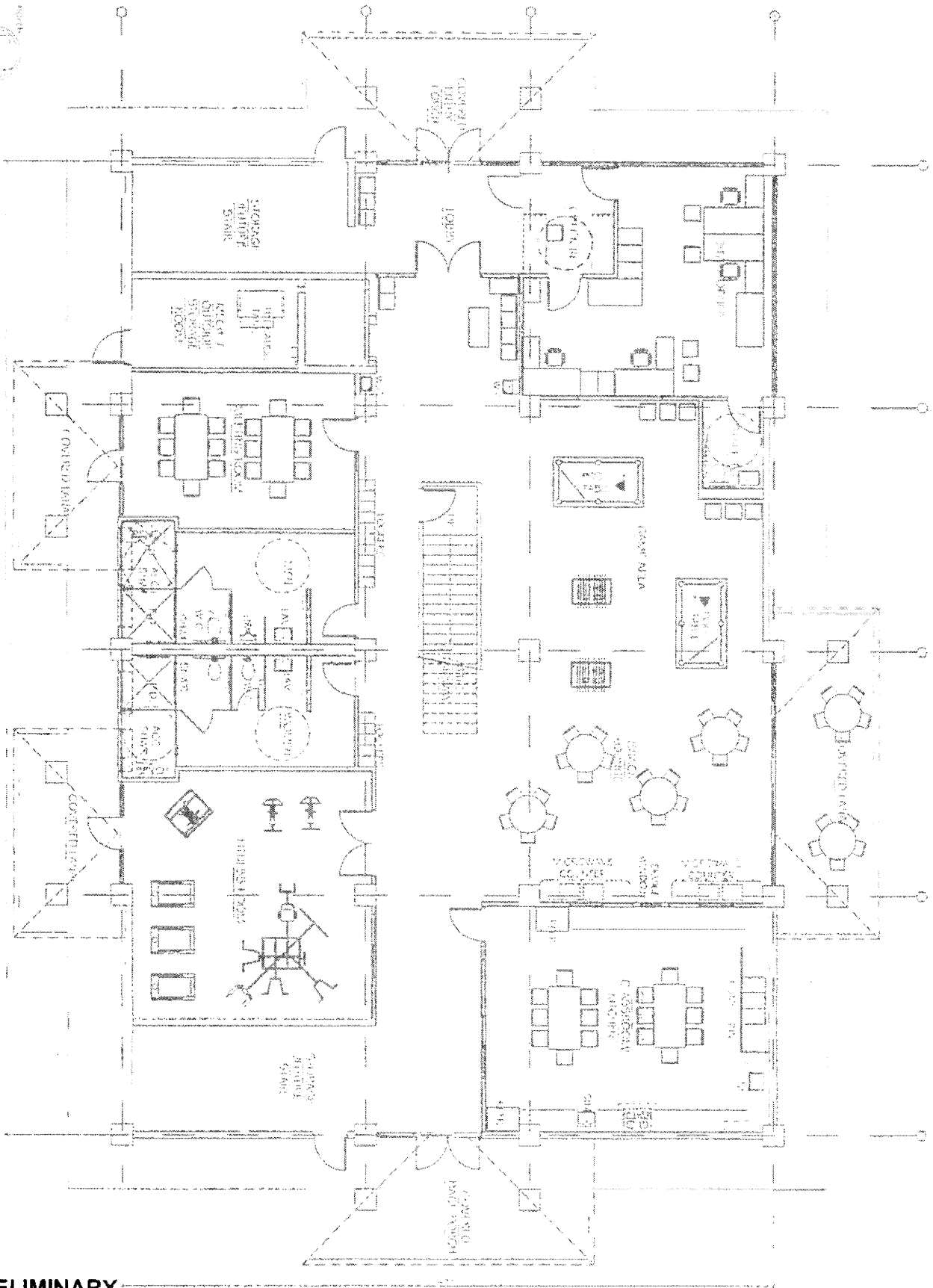
Sincerely,



LORI TSUHAKO
Acting Director of Housing and Human Concerns



PRELIMINARY GROUND FLOOR PLAN



PRELIMINARY

© 2012 Riecke-Sunland Kono Architects, LLC

SKI

2012.04.13
REV 00.001

**BOYS & GIRLS CLUB OF MAUI
PAUKUKALO CLUBHOUSE**
PAUKUKALO, MAUI, HAWAII
MK 221-3-000-107

**RIECKE
SUNLAND
KONO**

PRELIMINARY GROUND FLOOR PLAN