

# WAIALE ROAD EXTENSION PROJECT

FEDERAL-AID PROJECT: STP-3180(001)

COUNTY PW ENG JOB NO. 21-33

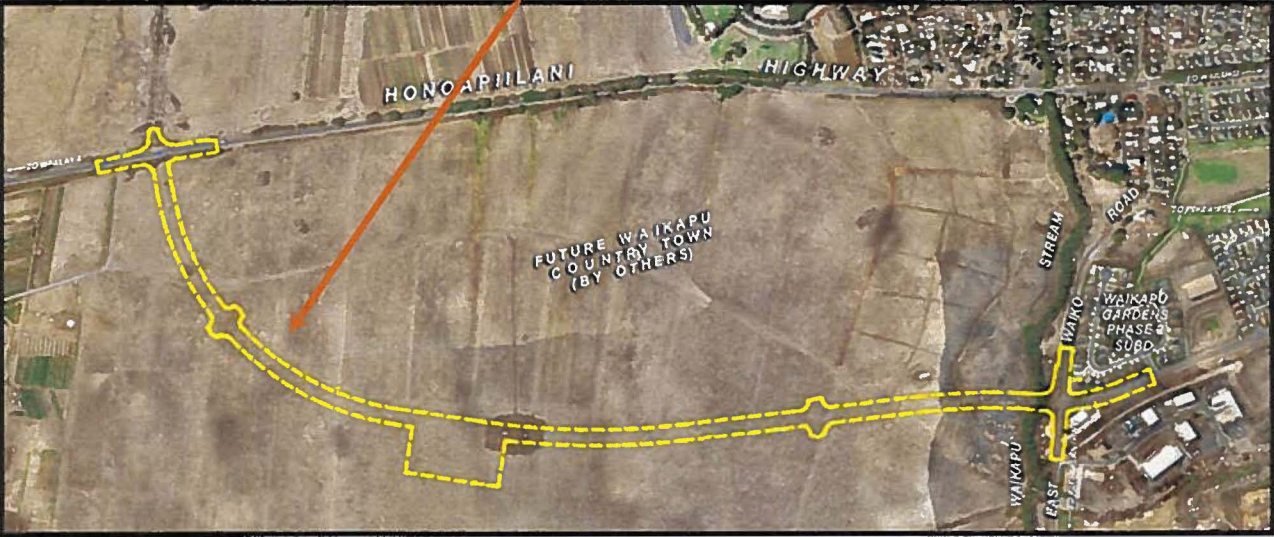
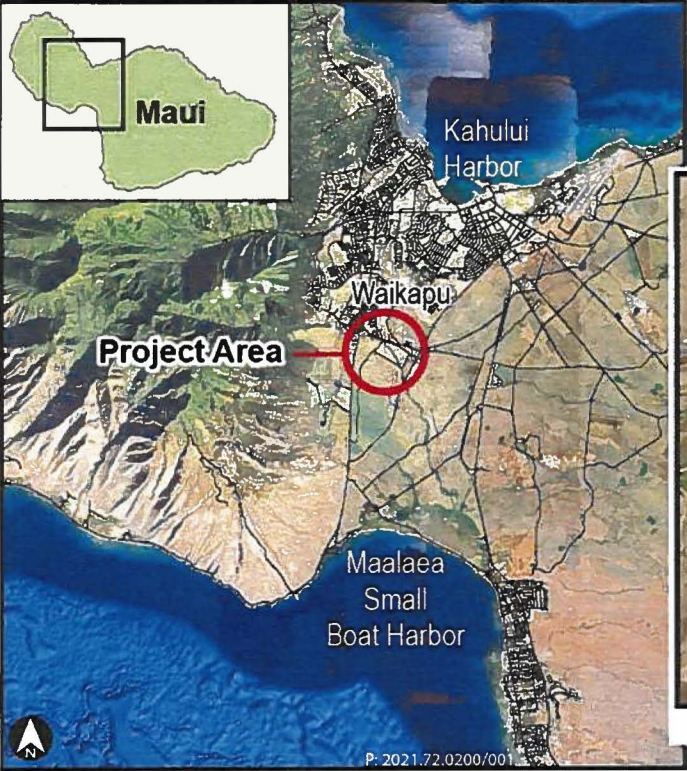
COUNCIL PROJECT UPDATE #2

DECEMBER 19, 2024



# PROJECT LOCATION

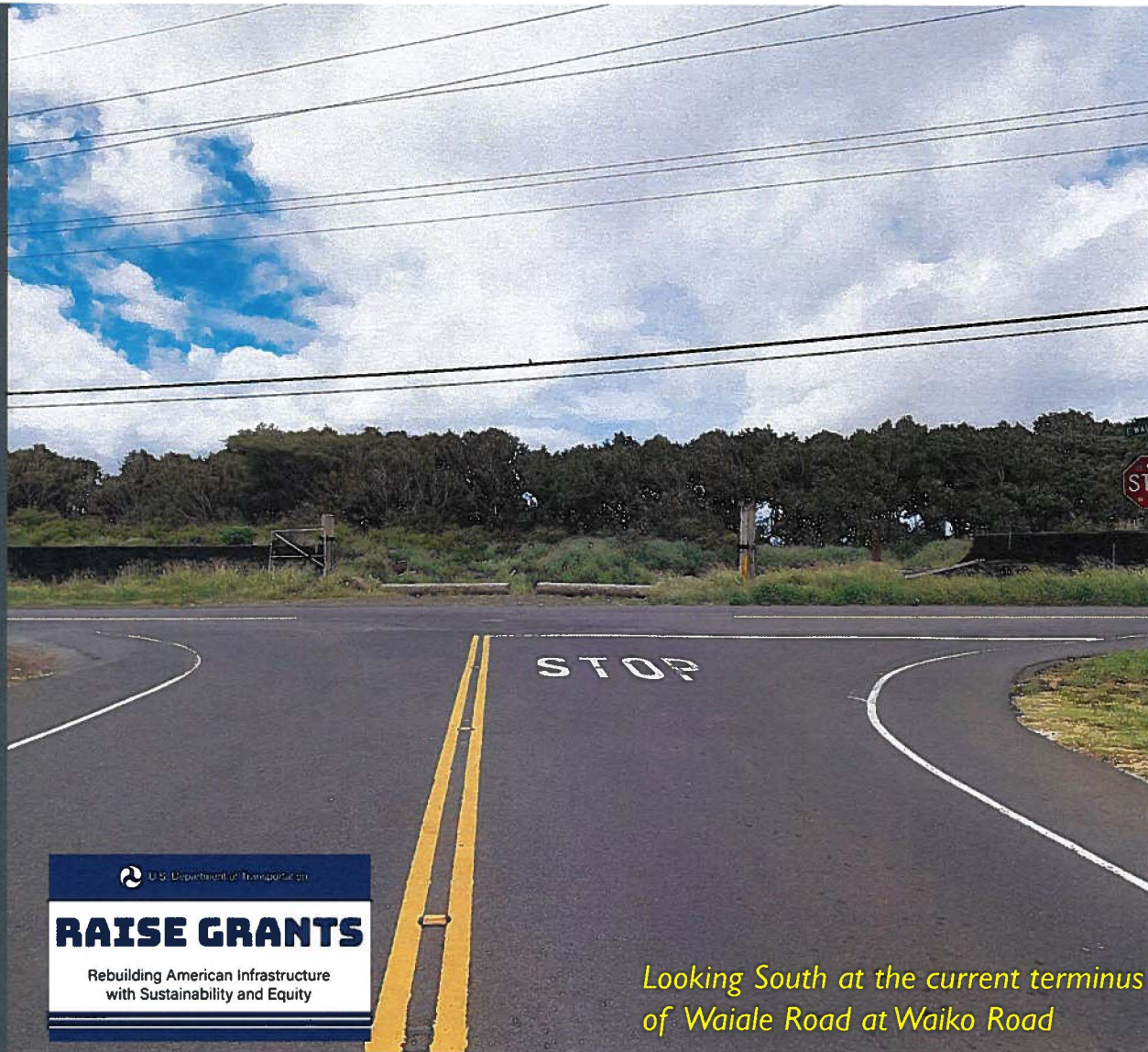
## PROJECT LOCATION



Date of Photo: May 12, 2022

# PROJECT BACKGROUND

- Regional transportation need
- Catalyst to support surrounding land use and development projects that will:
  - Improve regional access to Honoapiilani Highway and Kuihelani Highway
  - Provide safe access for non-motorized travelers with a shared-use path, sidewalks, and shoulder bikeways
- Leverage potential private-public partnerships
- \$25M RAISE Grant Award

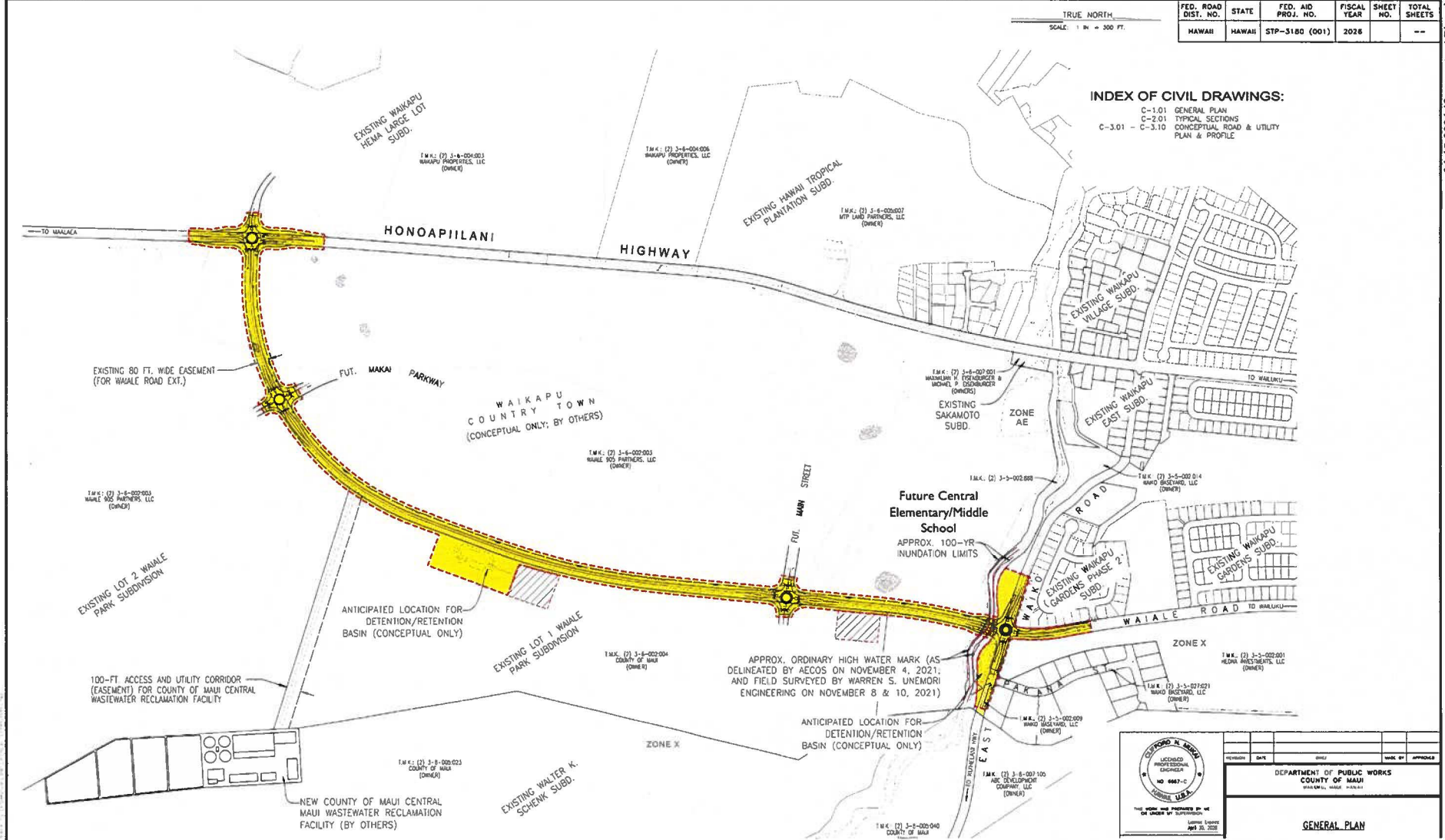


*Looking South at the current terminus  
of Waiale Road at Waiko Road*

FED. ROAD DIST. NO.	STATE	FED. AID PROJ. NO.	FISCAL YEAR	SHEET NO.	TOTAL SHEETS
HAWAII	HAWAII	STP-3180 (001)	2026	--	--

**INDEX OF CIVIL DRAWINGS:**  
 C-1.01 GENERAL PLAN  
 C-2.01 TYPICAL SECTIONS  
 C-3.01 - C-3.10 CONCEPTUAL ROAD & UTILITY PLAN & PROFILE

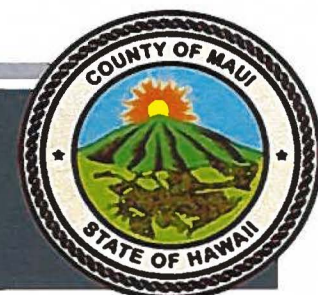
TRUE NORTH  
 SCALE: 1" = 300 FT.



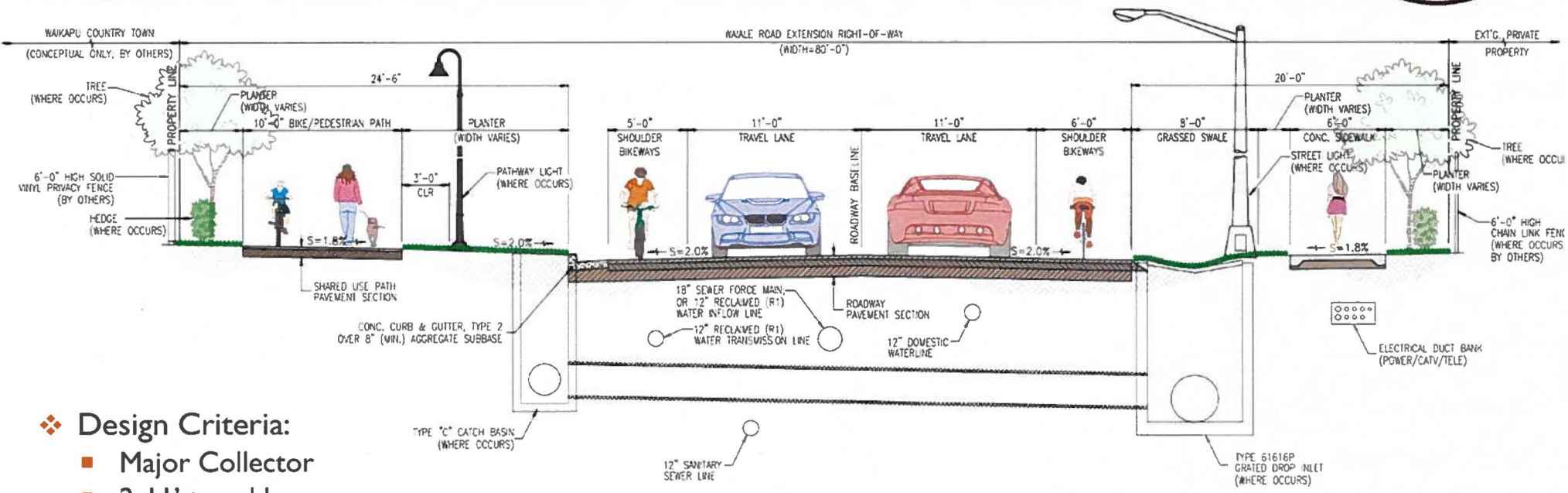
REVISION	DATE	BY	APPROVED

DEPARTMENT OF PUBLIC WORKS  
 COUNTY OF MAUI  
 HONOLULU, HAWAII

GENERAL PLAN

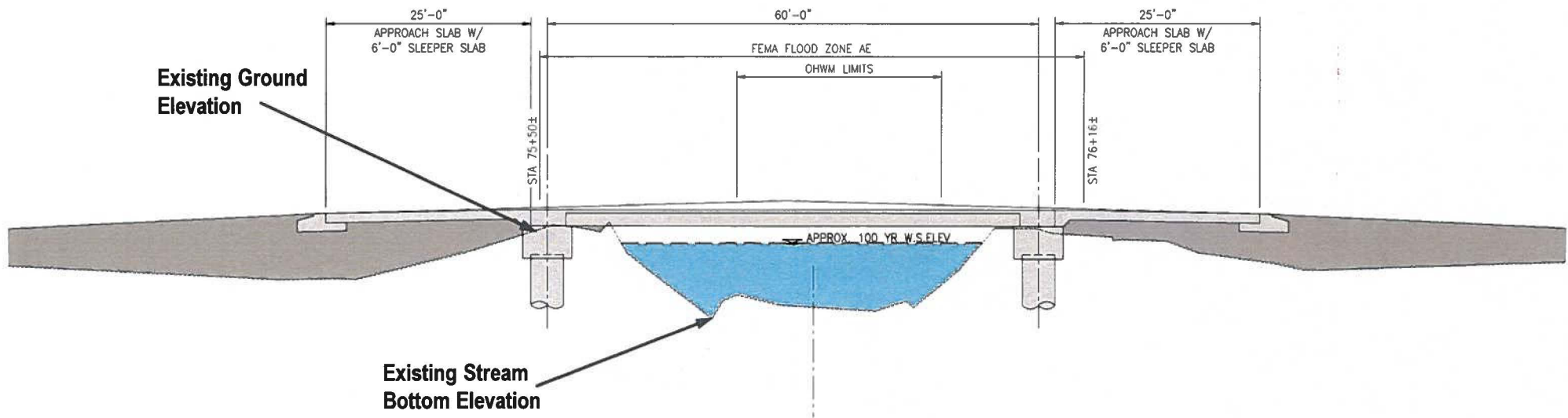
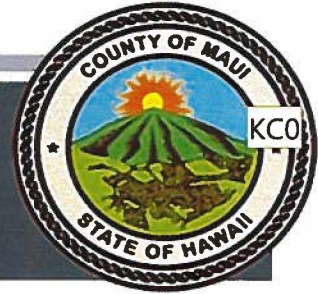


# DESIGN CRITERIA: TYPICAL SECTION

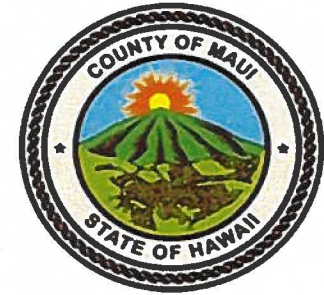
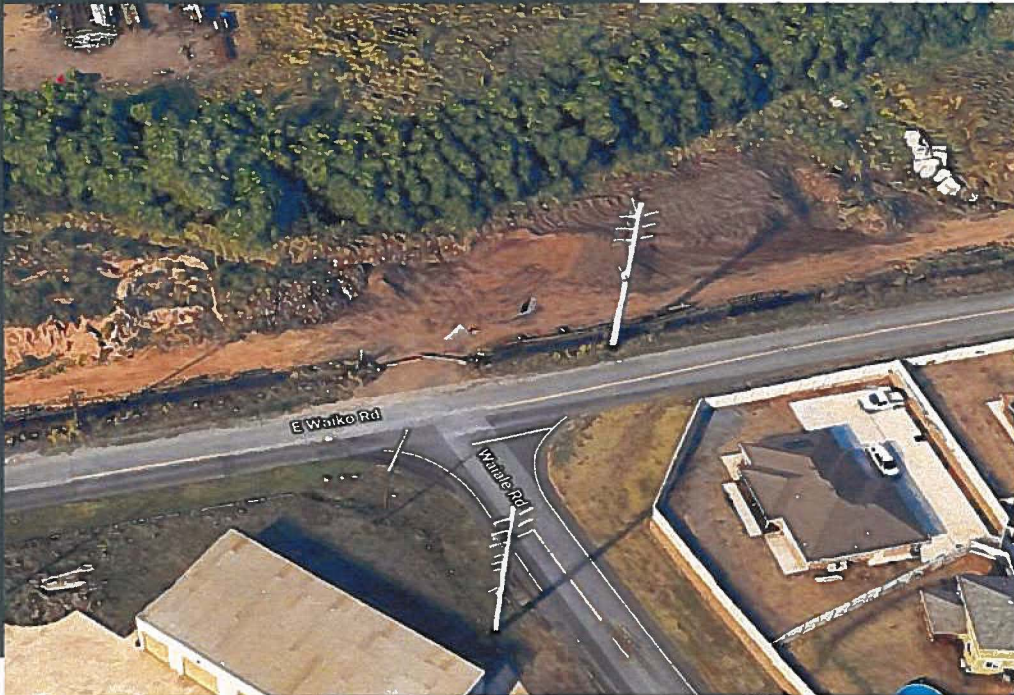


- ❖ Design Criteria:
  - Major Collector
  - 2-11' travel lanes
  - Shoulder Bikeway
  - Grassy drainage swales
  - Shared-Use path

# BRIDGE CROSSING (60' LONG SINGLE SPAN)

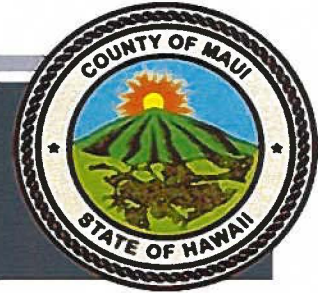


# INFRASTRUCTURE NEEDS

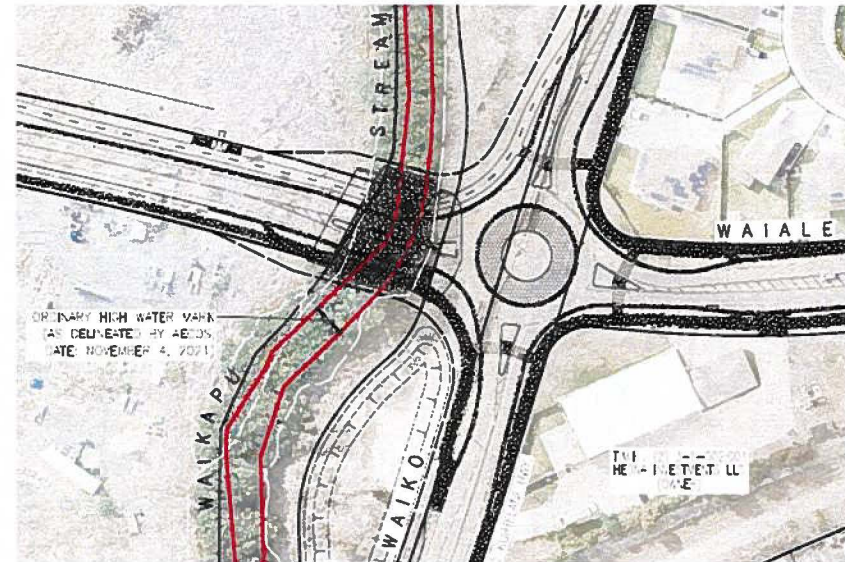


- Storm Drainage
  - Grass swales
  - Storm water ponds
  - Storm Drain lines
- Utilities
  - Water main
  - Sewer mains
  - Reclaimed (RI) Water main
  - Electrical lines
  - Telecommunications/Broadband

# TIAR RESULTS



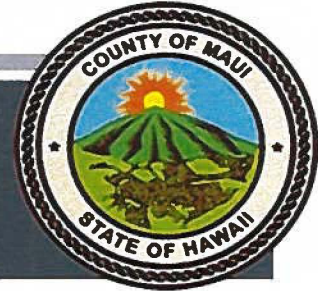
- Construction of the proposed Waiale Road Extension would reduce total vehicle miles of travel in Central Maui and reduce delays at intersections along Honoapiilani Highway.
- Intersection delays would be typically reduced.
- New intersections along the Waiale Road Extension will operate acceptably in 2045 as either roundabouts or signalized intersections.
- Overall, roundabout configurations are recommended to reduce both the number and severity of crashes since they reduce the number of conflict points and act as a traffic calming measure.



Waiale Road at Waiko Road Intersection



# ANTICIPATED WAIKAPU PROJECTS



- Reviewing Waiale corridor, from Ka'ahumanu Avenue to Kuikahi Drive
- Planning improvements at Waiale and Kuikahi intersection
- Planning Waiale shared-use pathway



Waiale and Kuikahi Intersection

# ENVIRONMENTAL REVIEW

- **Environmental Assessment**
  - Chapter 343, Hawai'i Revised Statutes
  - Assess potential environmental impacts and identify mitigation measures
  - Draft EA was published in the Hawai'i Environmental Review Program's Environmental Notice on November 8, 2024.
- **National Environmental Policy Act (NEPA)**
  - Federal environmental compliance will also be undertaken due to use of federal funds
  - NEPA EA scheduled to be published in Q1 2025

The EA is a joint Hawaii Environmental Policy Act and NEPA document.

# OVERVIEW OF FINDINGS IN DRAFT EA

## Archaeology

- SHPD concurred with preparation of an Archaeological Inventory Survey (AIS). AIS report will be submitted to SHPD for review and approval. Any archaeological mitigation required by SHPD will be implemented for the project.
- Consultation and coordination with State Historic Preservation Officer is ongoing for concurrence for Section 106, National Historic Preservation Act.

## Cultural

- A Cultural Report was completed; interviewed cultural resource and residents with ties to the area.

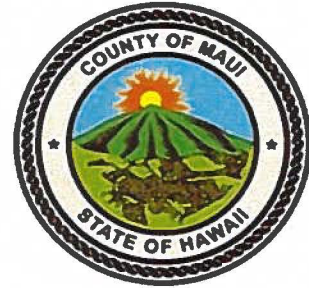
## Flora/Fauna

- Biological study noted no plants listed on endangered or threatened list. Land and aquatic study of fauna in Waikapu Stream also conducted due to the planned bridge crossing.
- Consultation and coordination with the US Fish and Wildlife Service is ongoing relative to concurrence for Section 7, Endangered Species Act.

## Noise

- Noise study concluded no impacts from roadway as there is no development in the vicinity of the proposed road.

## NEXT STEPS



- Draft Environmental Assessment was published on November 8, 2024
- Public meeting held on December 5, 2024
- Received comments on Draft EA through December 15, 2024
- Publish the Final Environmental Assessment: Q1 2025
- Proceed with the Construction Documents: Q3 2025
- Start Construction: Q4 2025/ Q1 2026
  - Estimated construction cost \$72 M



**Mahalo!**