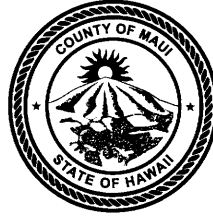


ALAN M. ARAKAWA
Mayor



KA'ALA BUENCONSEJO
Director

RECEIVED BRIANNE L. SAVAGE
Deputy Director

2018 SEP 26 PM 4:04

(808) 270-7230

Fax (808) 270-7934

DEPARTMENT OF PARKS AND RECREATION

700 Hali'a Nakoia Street Unit 2, Wailuku, Hawaii 96793

OFFICE OF THE MAYOR

OFFICE OF THE MAYOR
COUNTY CENTER

SEP 27 11:50 AM

RECEIVED

September 21, 2018

Honorable Alan M. Arakawa
Mayor, County of Maui
200 South High Street
Wailuku, Hawaii 96793

For Transmittal to:

Honorable Don S. Guzman, Chair
Parks, Recreation, Energy and
Legal Affairs Committee
Maui County Council
200 South High Street
Wailuku, Hawaii 96793

Dear Chair Guzman:

**SUBJECT: AMENDING CHAPTER 12.24A, MAUI COUNTY CODE,
RELATING TO EXCEPTIONAL TREES (PRL-43)**

As requested in your correspondence dated September 20, 2018, attached is the required information for each of the trees recommended for inclusion in the list of exceptional trees.

If you have any questions or require additional information, please feel free to contact me at Ext. 7230.

Sincerely,

KA'ALA BUENCONSEJO
Director of Parks and Recreation

Attachment

- c: Brianne Savage, Deputy Director
- Karla Peters, Parks Maintenance Superintendent
- Timothy Griffith, Arboriculturist
- Maui County Arborist Committee

KB:KP:lm

Council Chair
Mike White

Vice-Chair
Robert Carroll

Presiding Officer Pro Tempore
Stacy Crivello

Councilmembers
Alika Atay
Elle Cochran
Don S. Guzman
Riki Hokama
Kelly T. King
Yuki Lei K. Sugimura



Director of Council Services
Maria E. Zielinski

COUNTY COUNCIL

COUNTY OF MAUI
200 S. HIGH STREET
WAILUKU, MAUI, HAWAII 96793
www.MauiCounty.us

September 20, 2018

Mr. Kaala Buenconsejo, Director
Department of Parks and Recreation
County of Maui
Wailuku, Hawaii 96793

Dear Mr. Buenconsejo:

**SUBJECT: AMENDING CHAPTER 12.24A, MAUI COUNTY CODE,
RELATING TO EXCEPTIONAL TREES (PRL-43)**

The Parks, Recreation, Energy, and Legal Affairs Committee is in receipt of County Communication 18-319, from you, transmitting the attached proposed bill entitled "A BILL FOR AN ORDINANCE AMENDING CHAPTER 12.24A, MAUI COUNTY CODE, RELATING TO EXCEPTIONAL TREES."

The purpose of the proposed bill is to add recommended trees located throughout the County to the list of exceptional trees.

Section 12.24A.055(B)(2), Maui County Code, relating to the procedures for recommending designation of an exceptional tree, provides that the Maui County Arborist Committee may recommend to the Council for designation as exceptional "any tree, stand of trees, or grove of trees which has historic or cultural value; or, by reason of age, rarity, location, size, aesthetic quality, or endemic status, is worthy of preservation as an exceptional tree(s) for the county."

The provision also states that, "The committee's recommendation shall be made on a form that includes the following:

- a. Identification of the tree(s) by scientific and common names;
- b. Photograph of the tree(s);
- c. Location by address and tax map key;
- d. Map illustrating the specific location of the tree(s) on the parcel;

Mr. Kaala Buenconsejo
September 20, 2018
Page 2

- e. Evidence of ownership of the real property upon which the tree(s) is located;
- f. Description and dimensions; and
- g. Detailed statement of the basis for the committee's recommendation."

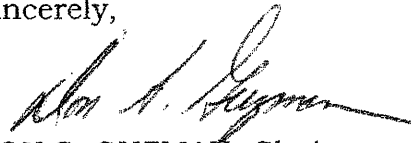
The proposed bill contains information relating to Subsections 12.24A.055(B)(2)(a), the tax map key required by (c), and (f).

May I please request the completed form that includes the required information for each of the trees recommended for inclusion in the list of exceptional trees by the arborist committee?

I would appreciate receiving your written response by **Friday, October 5, 2018**. To ensure efficient processing, please include the relevant Committee item number in the subject line of your response.

Should you have any questions, please contact me or the Committee staff (Carla Nakata at ext. 7659, or Pauline Martins at ext. 8039).

Sincerely,



DON S. GUZMAN, Chair
Parks, Recreation, Energy, and Legal
Affairs Committee

prl:ltr:043apr01:cmn

Attachment

cc: Mayor Alan M. Arakawa
Maui County Arborist Committee

Summary of Attached Exhibits

Name of Tree: ✓ Monkeypod, *Samanea saman* (Olowalu Monkey Pod Tree Tunnel)
Location: A stretch of Honoapiilani Highway from the north Mile Marker 16 to Luawa Street on the south in Olowalu, Island of Maui. Trees on both sides of Honoapiilani Highway.
TMK: (2)4-8-003:0340000
Landowner: State Department of Transportation, Highways Division
Description: 187 tree plantings started in the 1870s during the plantation era.
Dimension: Height: 80 feet, Diameter: 18 inches to 11 feet, Crown spread: up to 80 feet

Name of Tree: ✓ Wiliwili, *Erythrina sandwicensis* (Kaho'olawe Wiliwili – 4 trees)
Location: Kuheia LZ1, Luamakika, Island of Kaho'olawe
TMK: Not applicable
Landowner: KIRC, State of Hawaii
Description: Four (4) Wiliwili twisted together. Trees present in 1858
Dimension: Height: 7 feet, Diameter: average 23 inches, Crown spread: 16 feet

Name of Trees: ✓ Royal Palm, *Roystonea regia* (18); ✓ Monkey Pod, *Samanea saman* (8); ✓ Hala(spineless), *Pandanus tectorius* (5 stands); ✓ Plumeria, *Frangipani* (assorted) (11); ✓ Mango, *Mangifera* (assorted) (11)
Location: Old Maui High School (1913-1972) 22.158 acre campus, 449-499 Holomua Road, Hamakuapoko, Makawao, Island of Maui
TMK: ✓ (2)2-5-004:014
Landowner: County of Maui
Description: Historical value (The late US Representative Patsy T. Mink, alumni of the school), the former agricultural teacher, the late Mr. Ueoko, did many of the plantings including the mango trees
Dimensions: ✓ 18 Royal Palms - Height: 30 feet, Diameter: 20 inches, Crown spread: 20 feet
(Averages) ✓ 8 Monkey Pods - Height: 35-50 feet, Diameter: 33-120", Crown spread: 72-75 feet
✓ 5 Hala Stands - Height: 25 feet, Diameter: multi trunks, Crown spread: 20 feet
✓ 11 Plumeria - Height: 20 feet, Diameter: 19 inches, Crown spread: 15 feet
✓ 11 Mango - Height: 40 feet, Diameter: 25 inches, Crown spread: 35 feet

Name of Trees: Halapepe, *Chrysodracon auwahiensi* (2); Kokio, *Kokia cookei* (4); Loulu Palm, *Pritchardia arecina*; Loulu Palm, *Pritchardia forbesiana*

Location: D.T. Fleming Arboretum at Pu'u Mahoe, Kanaio, Island of Maui

TMK: (2)2-1-009-017

Landowner: Martha Vockrodt-Moran

Description: Historical value-planted by D.T. Fleming in 1952-1954, cultural value, rarity, endemic status

Dimensions: 2 Halapepe – Height: 21 feet, Diameter: 2 feet, Crown spread: 15 feet
(Averages) Kokio (4) – Height: 15 feet, Diameter: 3 inches, Crown spread: 6 feet

Name of Trees: Monkey Pod, *Samanea saman* (10)

Location: 940 South Kihei Road, Kihei, Island of Maui

TMK: (2)3-9-001-006-0000

Landowner: County of Maui

Description: Historical value, large shade canopy, aesthetic quality of specimens

Dimensions: Height: 30 feet, Diameter: 20 inches, Crown spread: 30 feet

Name of Tree: Monkey Pod, *Samanea saman*

Location: A 4.32 mile stretch of Honoapiilani Highway with approximately 290 monkey pod tree on South High Street, in front of the Wailuku Public Library, and the Monkey Pod tree fronting the old Wailuku Court House, Makai of High Street, at the Wells intersection.

TMK: not applicable

Landowner: State Department of Transportation, Highways Division

Description: While each individual tree may not be exceptional in its own right; the collection of over 290 Monkey Pod trees, covering a distance of 4.32 miles are exceptional because of the location, age and historic value

Dimensions: Height: 50 feet; Diameter: 24 inches to 40 inches; Crown spread: 80 feet

Maui County Arborist Committee
Exceptional Tree Nominations from 2011 to 2017

Olowalu Monkey Pod Tree Tunnel

Monkey Pod, *Samanea saman*

Location: A stretch of Honoapiilani Highway from the north Mile Marker 16 to Luawa Street on the south in Olowalu, Island of Maui. Trees on both sides of Honoapiilani Highway.

TMK: (2)4-8-003:0340000

Meeting: Review- March 8, 2017

Approval Vote- April 12, 2017

Nominated by: Maui Green & Beautiful organization

Landowner: State Department of Transportation, Highways Division

Description: 187 trees plantings started in the 1870s during the plantation era. A photo of 1935 show trees present. Historic, aesthetic values.

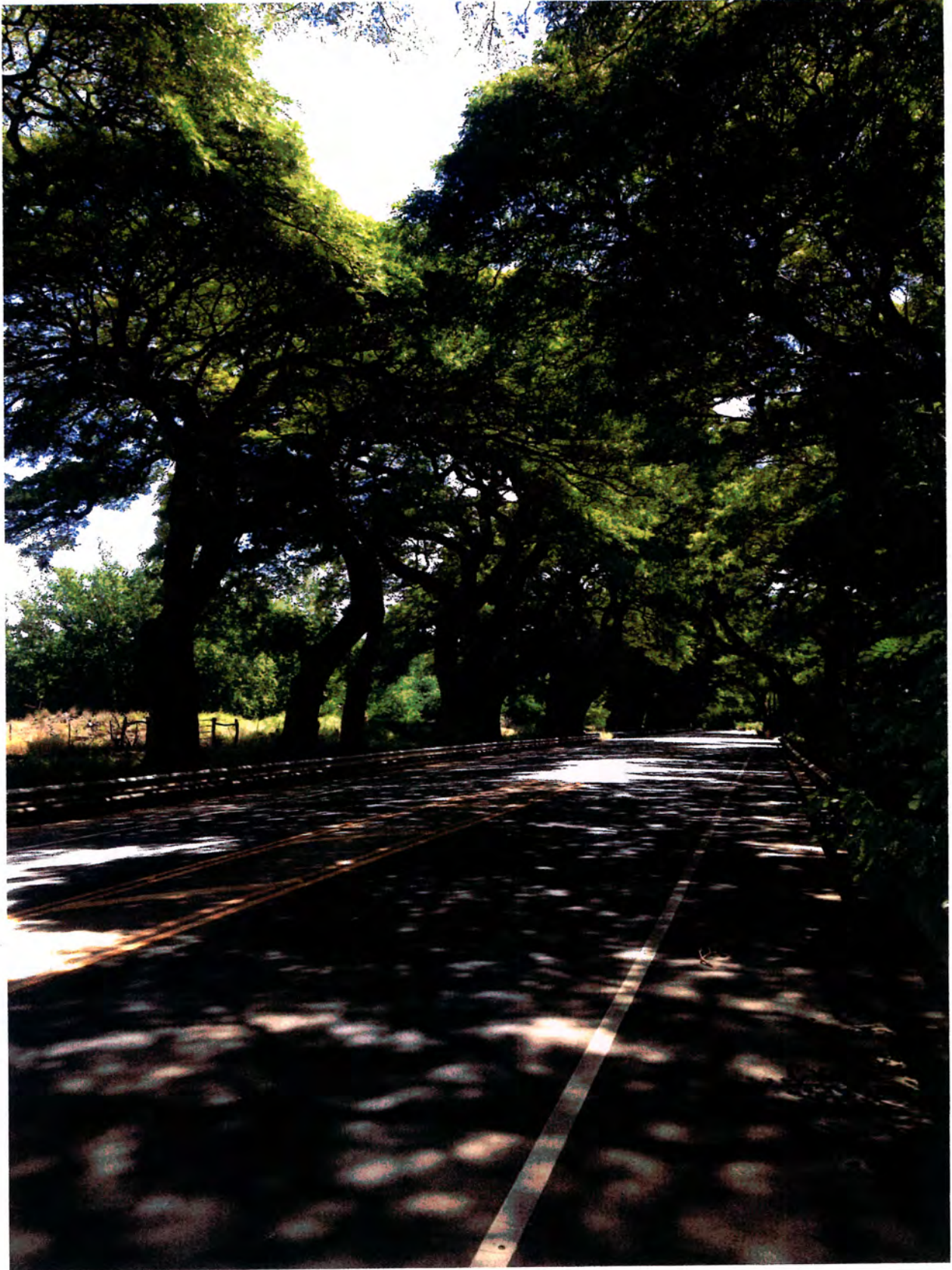
Dimensions (averages)

Height: 80 feet

Diameter: 18 inches to 11feet

Crown spread: up to 80 feet

Olowalu Monkey Pod Tree Tunnel



Maui County Arborist Committee
Exceptional Tree Nominations from 2011 to 2017

Kaho'olawe Wiliwili (4 Trees)

Wiliwili (4 trees), *Erythrina sandwicensis*

Location: Kuheia LZ1, Luamakika, Island of Kahoolawe

TMK:

Meeting: Review- July 13, 2016

Approval Vote- August 10, 2016

Nominated by: Kahoolawe Island Reserve Commission- KIRC

Landowner: KIRC, State of Hawaii

Description: Four (4) wiliwili twisted together. Photographs show trees already present in 1858. Historic, cultural, environmental values; age, rarity, size, aesthetic quality, endemic status

Dimensions (averages)

Height: 7 feet

Diameter: average 23 inches

Crown spread: 16 feet

Kaho'olawe Wiliwili trees
1939



FIGURE 14a. "A wind-blown wiliwili tree on the southwest slope of Lua Makika, in the lee of which the old soil remains as a mound, now surmounted by a lone lantana bush. Eleven-inch [28 cm] ring of insect net for scale," E. H. Bryan, 1939, Bishop Museum negative no. 19826.



FIGURE 14b. Same location, 1993. The mound of soil has grown considerably since 1931, indicating that it is more likely aeolian sediments deposited in the lee of the wiliwili (*Erythrina sandwicensis*) tree, rather than original soil as surmised by Bryan. The growth of the mound is an indication of substantial wind erosion between 1931 and 1993. However, because the mound is now almost completely vegetated with lantana and grass, it is likely that the degree of wind erosion has subsided in recent years. A row of tamarisk trees planted by the State Division of Forestry is visible on the horizon on the far right side of the photograph.

Íaho'olawe
2016

Wiliwili 1, 2, + 3



and 3 canopies

Wiliwili: 4



of tree 4

Maui County Arborist Committee
Exceptional Tree Nominations from 2011 to 2017

Old Maui High School Grove of Assorted Trees

Royal Palm, *Roystonea regia* (18)

Monkey Pod, *Samanea saman* (8)

Hala (spineless), *Pandanus tectorius* (5 stands)

Plumeria, *Frangipani (assortd)* (11)

Mango, *Mangifera (assorted)* (11)

Location: Old Maui High School (1913-1972) 22.158 acre campus,
449-499 Holomua Road, Hamakuapoko, Makawao, Island of Maui

TMK: (2)2-5-004:014

Meeting: Review: May 11, 2016

Approval Vote: June 8, 2016

Nominated by: Maui Green & Beautiful Organization

Landowner: County of Maui

Description: Historical value (The late US Representative Patsy T. Mink, alumni of the school), the former agricultural teacher, the late Mr. Ueoko, did many of the plantings including the mango trees, representing the school's agriculture base. Cultural value (spineless Hala), aesthetic quality, age, size.

Old Maui High School Grove of Assorted Trees (continue)

Dimensions:

Royal Palm (averages) (18)

Height: 30 feet

Diameter: 20 inches

Crown Spread: 20 feet

Monkey Pod (averages) (8)

Height: 35 feet-50 feet

Diameter: 33 inches -120 inches

Crown Spread: 72 feet-175 feet

Hala (averages) (5 stands)

Height: 25feet

Diameter: multi trunks

Crown Spread: 20 feet

Plumeria (averages) (11)

Height: 20 feet

Diameter: 19 inches

Crown Spread: 15 feet

Mango (averages) (11)

Height: 40 feet

Diameter: 25 inches

Crown Spread: 35 feet

SWD MAUI
High
School

Royal
Palms
TOTAL: 18



OLD MAUI High School Monkey Pod-8 Total diameter in sizes



OLD MAUI HIGH School

Hala (spineless) STANDS



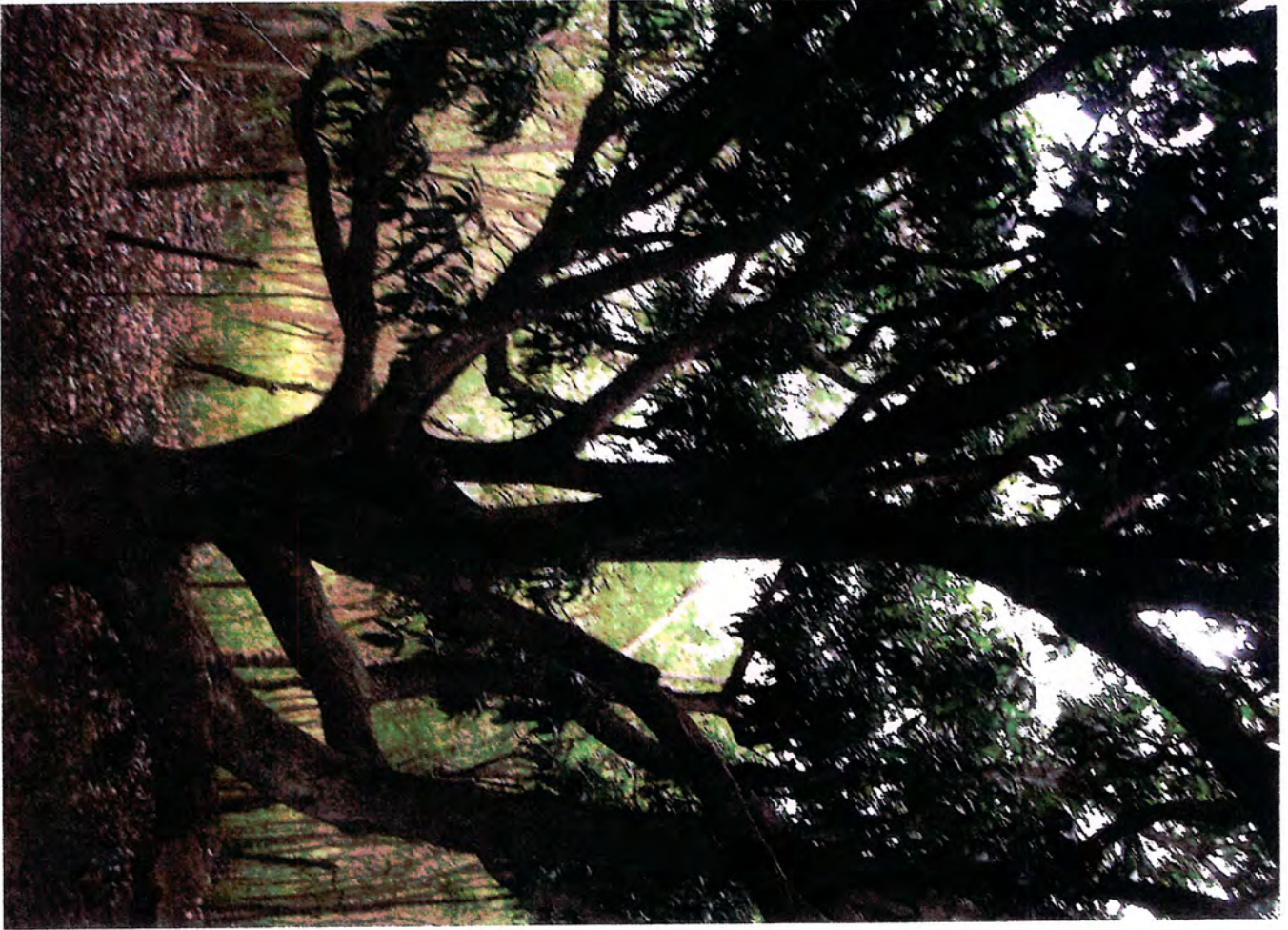
OLD MAOI HIGH SCHOOL
Plumeria - Assorted
Total: 11



OLD MAUI HIGH School

MANGO-ASSORTED GROVE

TOTA'
11



D.T. Fleming Arboretum at Pu'u Mahoe, Kanaio, Island of Maui
Assorted Palms and Trees (continue)

Halapepe (2 trees), *Chrysodracon auwahiensi*

Location: D.T. Fleming Arboretum at Pu'u Mahoe, Kanaio, Island of Maui

TMK: (2)2-1-009-017

Meeting: Review-

Approval Vote-June 10, 2015

Nominated by: Martha Vockrodt-Moran

Landowner: Martha Vockrodt-Moran

Description: Historical value-planted by D.T Fleming in 1954, cultural value, rarity, endemic status

Dimensions:

Height: 21 feet

Diameter: 2 feet

Crown spread: 15 feet

Kokio (4 Trees), *Kokia cookei*

Location: D.T. Fleming Arboretum at Pu'u Mahoe, Kanaio, Island of Maui

TMK: (2)2-1-009-017

Meeting: Review-

Approval Vote- June 10, 2015

Nominated by: Martha Vockrodt-Moran

Landowner: Martha Vockrodt-Moran

Description: Rarity-4 of the only 5 individuals of *Kokia cookei* in existence. Historical value-planted by D.T Fleming, cultural value, endemic status

Dimensions:

Height: 15 feet

Diameter: 3 inches

Crown spread: 6 feet

D. T. Fleming's Arboretum *Chrysodracou auwahiensis* - Hala pepe



D.T. Fleming Arboretum

Kokia cookii

Kokia



Maui County Arborist Committee
Exceptional Tree Nominations from 2011 to 2017

D.T. Fleming Arboretum at Pu'u Mahoe, Kanaio, Island of Maui
Assorted Palms and Trees

Loulu Palm, *Pritchardia arecina*

Location: D.T. Fleming Arboretum at Pu'u Mahoe, Kanaio, Island of Maui

TMK: (2)2-1-009-017

Meeting: Review-

Approval Vote- June 10, 2015

Nominated by: Martha Vockrodt-Moran

Landowner: Martha Vockrodt-Moran

Description: Historical value-planted by D.T Fleming in 1952, cultural value, rarity, endemic status

Dimensions:

Height: 17 feet

Diameter: 7 inches

Crown spread: 16 feet

Loulu Palm, *Pritchardia forbesiana*

Location: D.T. Fleming Arboretum at Pu'u Mahoe, Kanaio, Island of Maui

TMK: (2)2-1-009-017

Meeting: Review-

Approval Vote- June 10, 2015

Nominated by: Martha Vockrodt-Moran

Landowner: Martha Vockrodt-Moran

Description: Historical value-planted by D.T Fleming in 1952, cultural value, rarity, endemic status

Dimensions:

Height: 21 feet

Diameter: 6 inches

Crown spread: 12 feet

D. T. Fleming Arboretum

Pritchardia crecina

Loulu Palm



D. T. Fleming Arboretum *Pritchardia forbesiana* Hōulu Palm



Maui County Arborist Committee
Exceptional Tree Nominations from 2011 to 2017

Kihei Road Monkey Pod (10 Trees)

Monkey Pod (stand of 10), *Samanea saman*

Location: 940 South Kihei Road, Kihei, Island of Maui

TMK: (2)3-9-001-006-0000

Meeting: Review-

Approval Vote-April 13, 2011

Nominated by: Elaine Malina

Landowner: County of Maui

Description: Historical value, large shade canopy, aesthetic quality of specimens

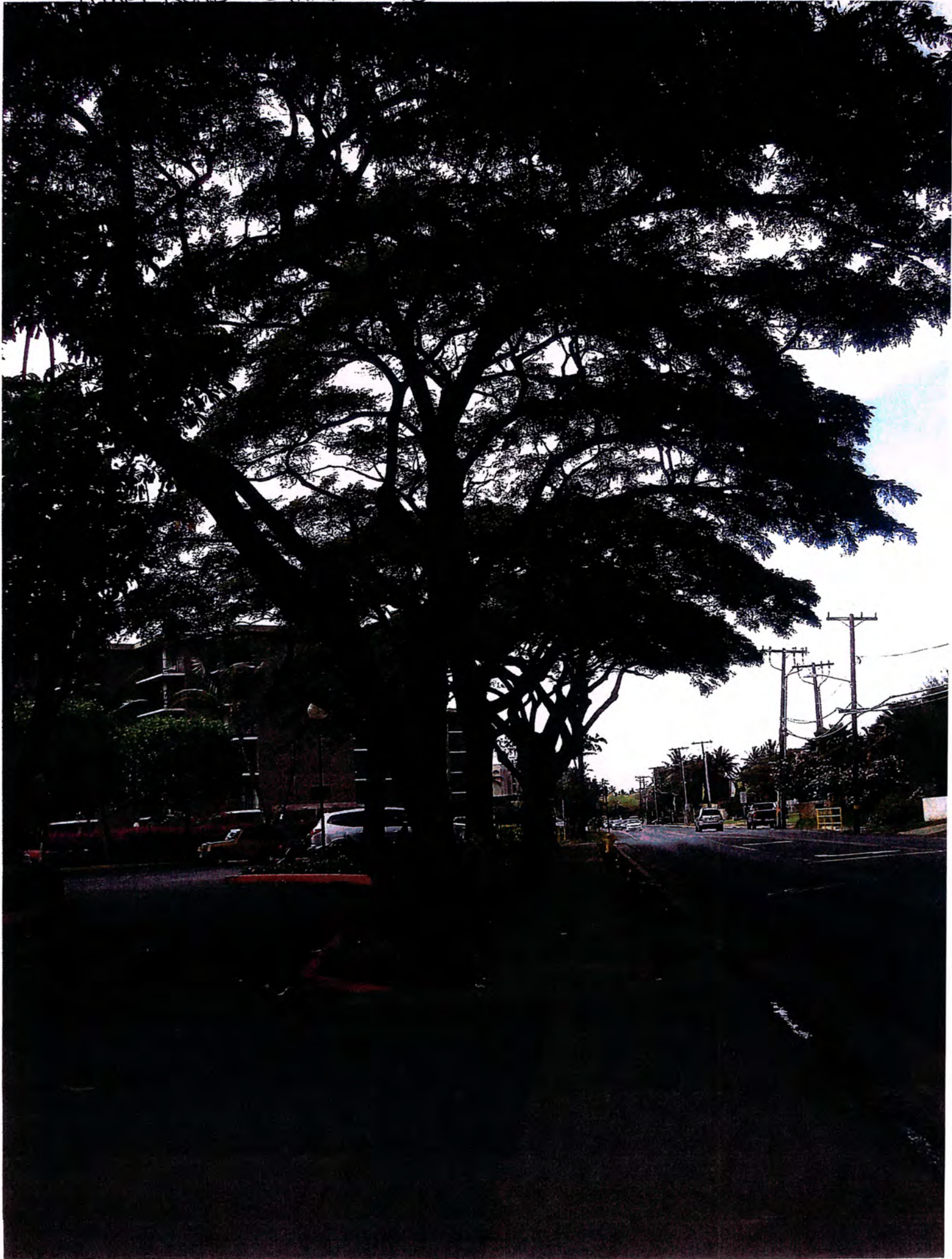
Dimensions: (averages)

Height: 30 feet

Diameter: 20 inches

Crown spread: 30 feet

Kihei Road - STAND OF 10



Kihei Road Monkey Pod - 10 Trees Aerial view



Maui County Arborist Committee
Exceptional Tree Nominations from 2011 to 2017

Honoapiilani Highway Monkey Pods (290 Trees)

Monkey Pod, *Samanea saman*

Location: A 4.32 mile stretch of Honoapiilani Highway with approximately 290 Monkey Pod trees between Kahookele Street and Kuihelani Highway, and including the Monkey Pod tree on South High Street, in front of the Wailuku Public Library, and the Monkey Pod tree fronting the old Wailuku Court House, makai of High Street, at the Wells intersection.

TMK:

Meeting: Review-

Approval Vote-July 13, 2011

Nominated by: Jordan Hart and Kelly Young

Landowner: State Department of Transportation, Highways Division

Description: While each individual tree may not be exceptional in its own right; the collection of over 290 Monkey Pod trees, covering a distance of 4.32 miles are exceptional because of the location, age and historic value.

Dimensions: (averages)

Height: 50 feet

Diameter: 24 inches to 40 inches

Crown spread: 80 feet

Honoapiilani Highway Monkey Pods 4.52 mile stretch
 including Monkey Pod Tree in front of the Wailuku Public Library and the
 Monkey Pod Tree fronting the Old Wailuku

Court
House

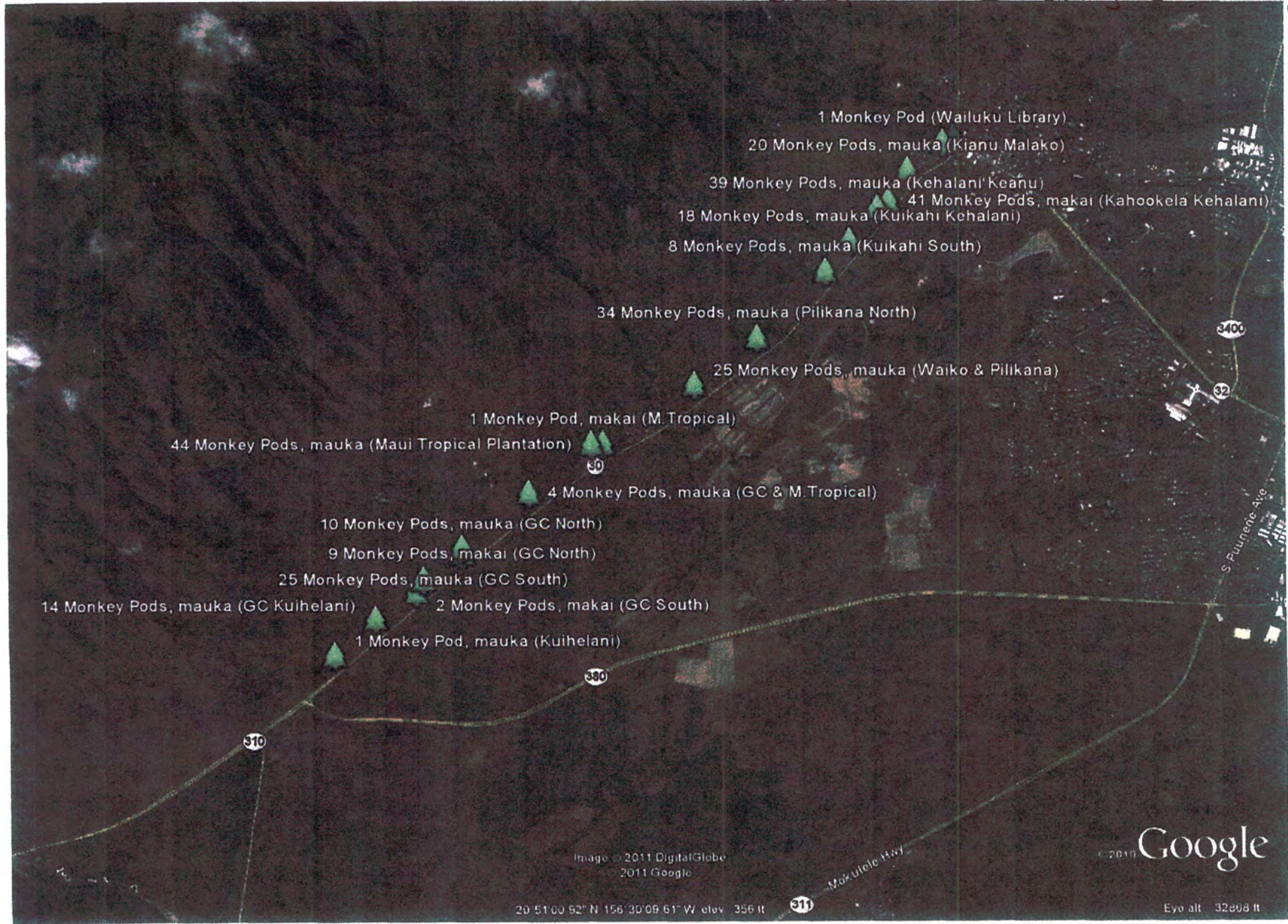
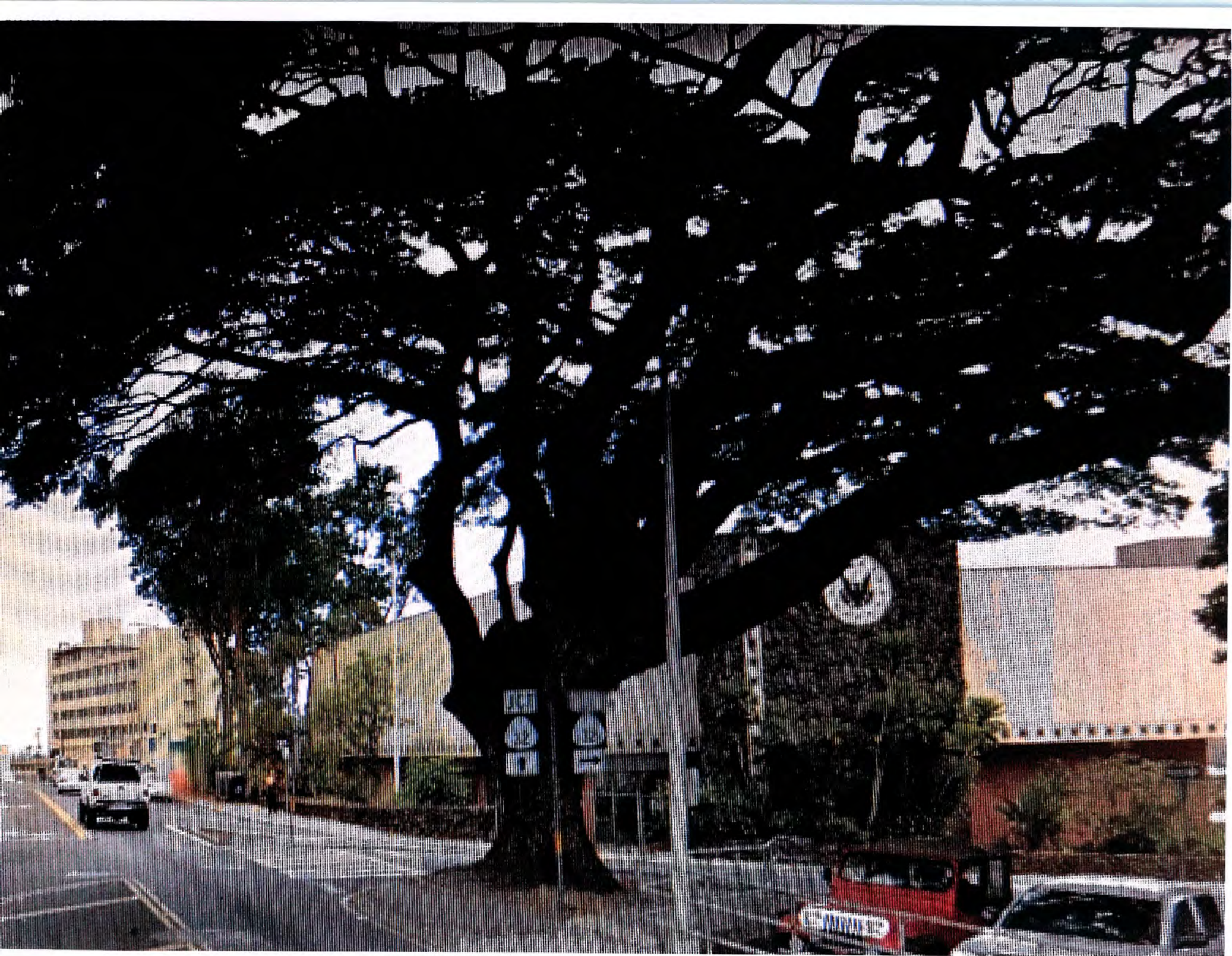


Image © 2011 DigitalGlobe
 © 2011 Google

Google

20° 51' 00" 52" N 156° 30' 09" 61" W elev. 356 ft

Eyo alt. 32808 ft



Waikiki Public Library 1968

HONOAPI'IANI HIGUCHI





Wailuku Library 1928

Maui County Arborist Committee

Meeting Minutes

July 11, 2018

1. Call to order at 1:35 pm was made by Kimberly Thayer, Committee Chair, when it was determined that a quorum was present.
2. Committee Business –
 - a. Election of Committee Chair and Vice Chair – this item was moved from Subcommittee Reports to New Committee Business with no objection by committee. Lance DeSilva nominated Alex Haller as Chair, noting that Alex had expressed interest at a previous meeting. Alex accepted with a condition that all the previous exceptional tree nominations be handled by outgoing chair, Kimberly Thayer. The motion was seconded by Arine Bulkley and approved unanimously. Lance DeSilva nominated Chris Reynolds for Vice Chair. No other nomination, was made for Vice Chair. It was noted that Chris has served on the committee for several years. The motion was seconded by Arine Bulkley and approved unanimously.
 - b. Approval of minutes - It was mentioned by Kimberly Thayer and discussed by committee regarding subcommittee item 3b to delete the wording “during and resolved” in sentence 2. Also, it was suggested to delete “which has been resolved” in sentence 3. It was motioned to approve amended minutes by Arine Bulkley and seconded by Kimberly Thayer and all in favor. It was suggested by the committee to submit a formal complaint to the Director of Parks regarding any concerns moving forward of the Hoaloha Park. Also suggested by Kimberly Thayer to add comments that was discussed on subcommittee item 2a, It was discussed to add the following to the end of 2a “The Committee comments were for adherence to the Maui County Planting Plan to make sure the new species choices adheres and consistence to the current list and maintenance of trees”. There was a motion made to amend minutes by Kimberly Thayer, seconded by Arine Bulkley and passed unanimously. No other discussion or comments of the minutes was made. Approval of the amended minutes for the Committee meeting of June 11, 2018: Motion to approve by Lance DeSilva and seconded by Kimberly Thayer and unanimously approved.
3. Subcommittee Reports –
 - a. Election of Committee Chair & Vice chair was moved to new business by Kimberly Thayer. Refer to 2a
 - b. Exceptional Tree Nomination package - Public Testimony by Barbara Fernandez, Director of Maui Green & Beautiful: suggested and asked the Committee go through the protocol for processing and advancing exceptional tree nominations

and clean up the process referring to the Maui County Planting Plan Chapter 5. On behalf of Maui Green & Beautiful, Barbara offered their expertise and assistance in processing the exceptional tree nominations. No questions or comments by committee. Public Testimony closed. Discussion on this topic, Kimberly Thayer started off by saying that the exceptional nomination tree list binder was put together and all required information has been included; Elaine Malina, President of Maui Green & Beautiful assisted greatly with putting the binder together. The binder was passed around the room to be reviewed by all committee members to ensure all information required is included in the binder as stated by David Galazin, Corporate Counsel. David provided an overview of the procedure to submit the exceptional tree nomination package to the County Council and Councilmember Don Guzman for Council action. This process of the binder of exceptional tree nominations will be given to Karissa Kaeo to make a copy for file. Then Kimberly Thayer will deliver to Director of Parks & Recreations office for transmittal to the County Council. Alex Haller to follow up with the Director's office. There was a motion made by Arine Bulkley and seconded by Lance DeSilva and unanimously approved.

- c. Proposed Changes to Off-Street Parking Ordinance - Kimberly Thayer will work on the Committee comment letter and submit to the Planning Dept. No further action needed.
- d. Arbor Day – Public Testimony by Barbara Fernandez, Maui Green & Beautiful, mentioned to discuss and for the records to include the Beautification of Waiko Road tree stump removal. It was mentioned that a quote was done on the removal of the stumps, estimated quote was a few thousand dollars per stump from past Committee member Mark Dobbertin. Arine suggested planting of trees on the corner of High Street by the Eucalyptus tree by the State Building. Would need permission from DAGS in order to carry out this project. Alex Haller to call DAGS to ask permission on planting trees. Alex Haller suggested maintenance of the existing trees on the Kaahumanu median location using molasses as fertilizer and to detach and compost. Arine Bulkley suggested Keopuolani Park. Lance DeSilva mentioned Central Maui Regional Park needs trees, very minimal trees and shade. Kimberly Thayer mentioned the park alongside the Maui Lani Parkway road has very minimal to no trees or shade, but it was determined that this is not yet a County park. No action needed. Further discussion on topic will be put on next meeting's agenda.
- e. Haleakala Ranch Mamane Tree Nomination - Hanna Mounce not present at meeting to provide update. Deferred to next meeting

4. Chairman's Report – none

5. Agenda Development for Next Meeting –

- Public Testimony by Barbara Fernandez to add discussion of Kula Park – Jacaranda Trees covered with glycine vines

- Discussion on ideas for public outreach and education as suggested by Arine Bulkley
- Haleakala Ranch Mamane Tree update by Hanna Mounce
- Arbor Day updates

6. Next meeting to be held on Wednesday, August 8, 2018 at 1:30pm

7. Adjournment – Meeting Adjourned at 3:23pm

Those present: Kimberly Thayer, Alex Haller, Lance DeSilva, Arine Bulkley, Chris Haynes, William Myrter, Members of the Committee; Tim Griffith, Arboriculturist; David Galazin, Corp. Counsel; Elaine Malina, President of Maui Green & Beautiful; Barbara Fernandez, Maui Green & Beautiful, Karissa Kaeo, Dept. of Parks & Recreation clerical staff. Those absent: Chris Reynolds, Hanna Mounce, Alison Cohan.

Respectfully Submitted by:

Karissa Kaeo