

## APT Committee

---

**From:** coordinator@eastmauiwatershed.org  
**Sent:** Monday, January 31, 2022 2:53 PM  
**To:** APT Committee  
**Subject:** East Maui Watershed Partnership Presentation for APT 2/1 1:30pm  
**Attachments:** EMWP\_MauiCounty\_APT\_2022\_NC\_comp.pptx

You don't often get email from coordinator@eastmauiwatershed.org. [Learn why this is important](#)

Aloha ATP Committee,

Please find slides that will be presented from the East Maui Watershed Partnership to the Committee at tomorrow's meeting.

Mahalo,  
Dan Eisenberg

Dan Eisenberg  
Program Manager  
East Maui Watershed Partnership (EMWP)  
POB 431, Makawao, HI 96768  
[www.eastmauiwatershed.org](http://www.eastmauiwatershed.org)  
[coordinator@eastmauiwatershed.org](mailto:coordinator@eastmauiwatershed.org)  
808.573.6999 office / 808.573.6991 fax  
*A project of the Pacific Cooperative Studies Unit (PCSU)*  
*University of Hawaii at Manoa*  
*College of Natural Sciences*  
<http://manoa.hawaii.edu/hpicesu/pcsu.htm>



East Maui Watershed Partnership:  
Watershed Protection for Maui County

Dan Eisenberg  
EMWP Program Manager

Agriculture and Public Trust  
Committee February 1, 2022

# Mission Statement

“The overall mission of EMWP is to continue protecting East Maui’s primary water source, including, but not limited to, the native forested watershed by significantly reducing targeted threats.”

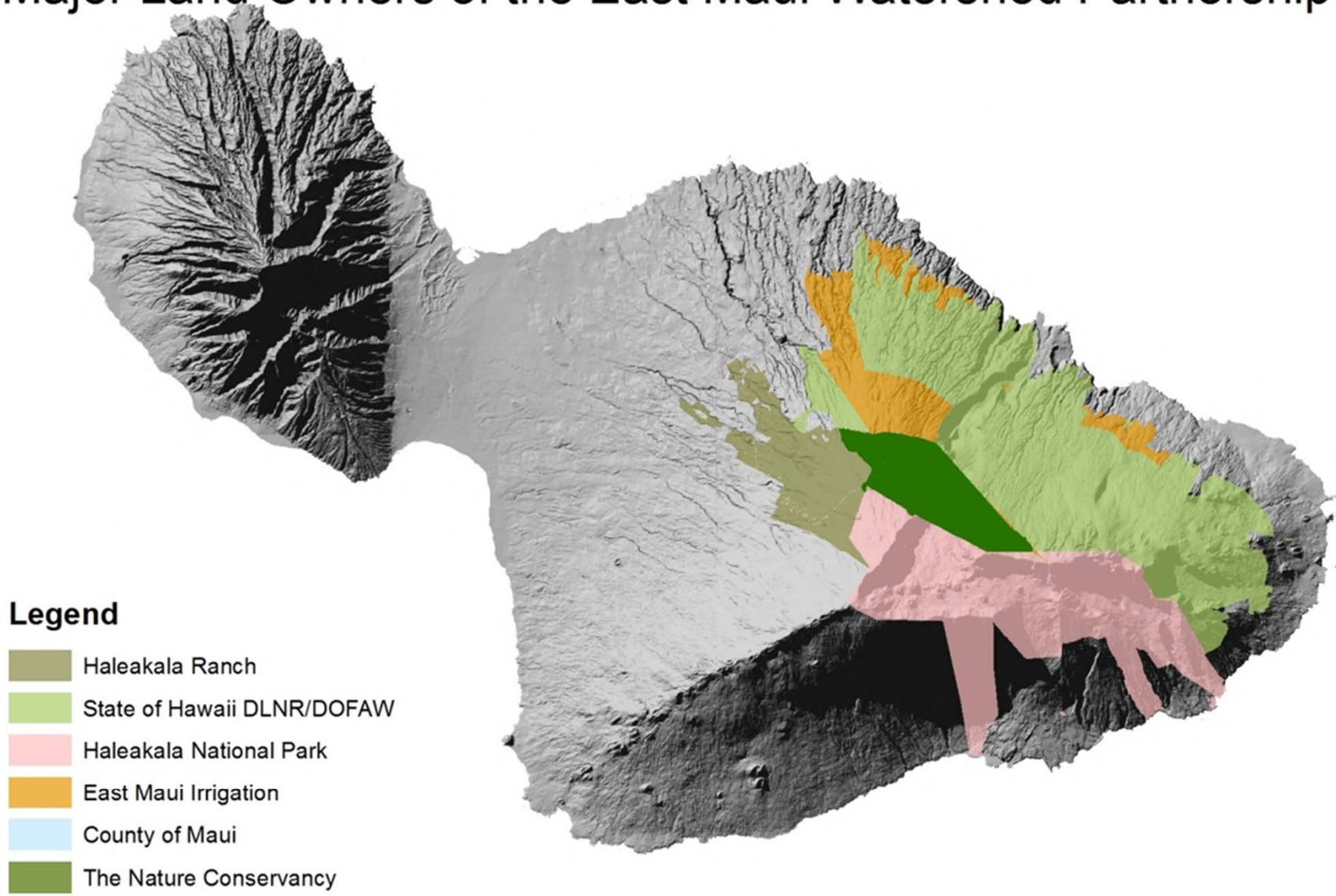




# Partners

- The Nature Conservancy
- East Maui Irrigation
- Haleakalā National Park
- Haleakala Ranch Company
- County of Maui – Department of Water Supply
- State of Hawai‘i – Department of Land and Natural Resources

# Major Land Owners of the East Maui Watershed Partnership



## Proximity of EMWP Project Area to DWS Water Sources

Project area recharging aquifers feeding wells in Haiku and Paia vicinity and feeding Waikamoi Collection System.

Project area recharging aquifers feeding wells in Keanae.

Project area recharging aquifers feeding wells in Hana.

Approximate Extent of Customers Served in the DWS Upcountry District



## Fence Construction Maintenance and Inspection







## Build and Maintain Appropriate Infrastructure





## Remove All Invasive Hooved Animals



Invasive alien weeds like Himalayan ginger (*Hedychium gardnerianum*), miconia (*Miconia calvescens*) and strawberry guava (*Psidium cattleinum*) out-compete native species, creating monocultures and completely displacing native vegetation

## Invasive Plant Control



## Volunteer Based Watershed Restoration and Community Outreach



## Long Term Priorities

- Expand or enhance protection efforts on private and public lands in close proximity to surface water collection systems and high value aquifer recharge areas.
- Support efforts to better quantify the effects of watershed management practices on water availability and modify management accordingly.
- Support efforts to contain the spread of Rapid 'Ōhiā Death (Ceratocystis Wilt of 'Ōhiā).
- Diversify funding and seek sustainable sources.



Mahalo!



Contract:  
Dan Eisenberg  
[coordinator@eastmauiwatershed.org](mailto:coordinator@eastmauiwatershed.org)  
[www.eastmauiwatershed.org](http://www.eastmauiwatershed.org)