

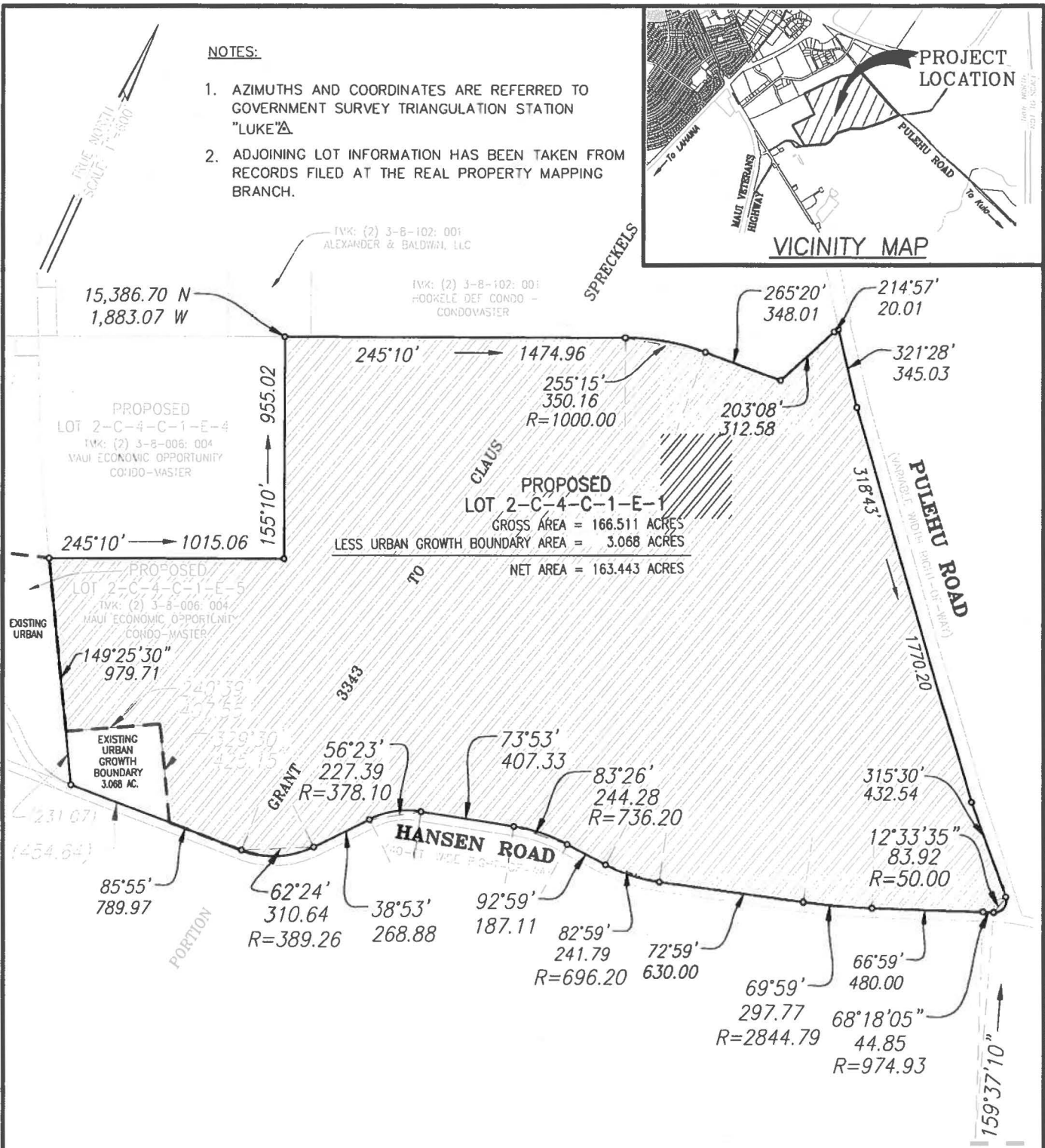
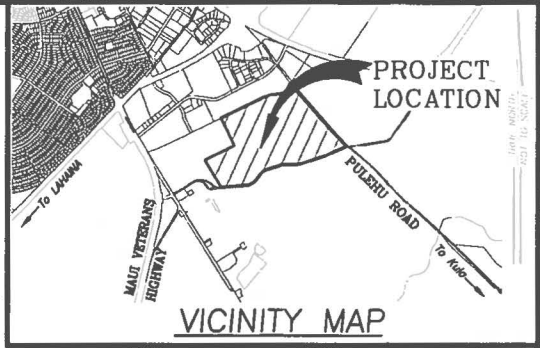
DRIP Committee

From: Jacalyn M. Takakura <Jacky.Takakura@co.maui.hi.us>
Sent: Wednesday, May 6, 2026 10:01 AM
To: DRIP Committee
Subject: Bill 163 Ho'onani Village MIP Amendment Map (DRIP-19)
Attachments: Ho'onani Village Map MIP-1.pdf

Jacky Takakura, Director
Maui County Planning Department
2200 Main Street, Suite 315
Wailuku HI 96793
(808) 270-7734

NOTES:

1. AZIMUTHS AND COORDINATES ARE REFERRED TO GOVERNMENT SURVEY TRIANGULATION STATION "LUKE" Δ.
2. ADJOINING LOT INFORMATION HAS BEEN TAKEN FROM RECORDS FILED AT THE REAL PROPERTY MAPPING BRANCH.



**MAUI ISLAND PLAN DIRECTED GROWTH
 MAP AMENDMENT NO. MIP-1
 URBAN GROWTH BOUNDARY AMENDMENT - PUUNENE, MAUI, HAWAII**

APPROVAL: _____ County Clerk	PUBLIC HEARING DATE: _____ ADOPTED BY COUNTY COUNCIL: ADOPTED BY MAYOR: _____
APPROVAL: _____ Planning Director	ORDINANCE NO. _____ DATE: _____
SCALE: 1" = 600'	

OFFICE OF THE COUNTY CLERK
 200 S. HIGH ST. WAILUKU, MAUI, HAWAII, 96793

LAND
 TMK: (2) 3-8-006: POR. 004

AREA
 163.443 ACRES