

# East Maui Watershed Partnership

Dan Eisenberg, Program Manager



# Mission Statement

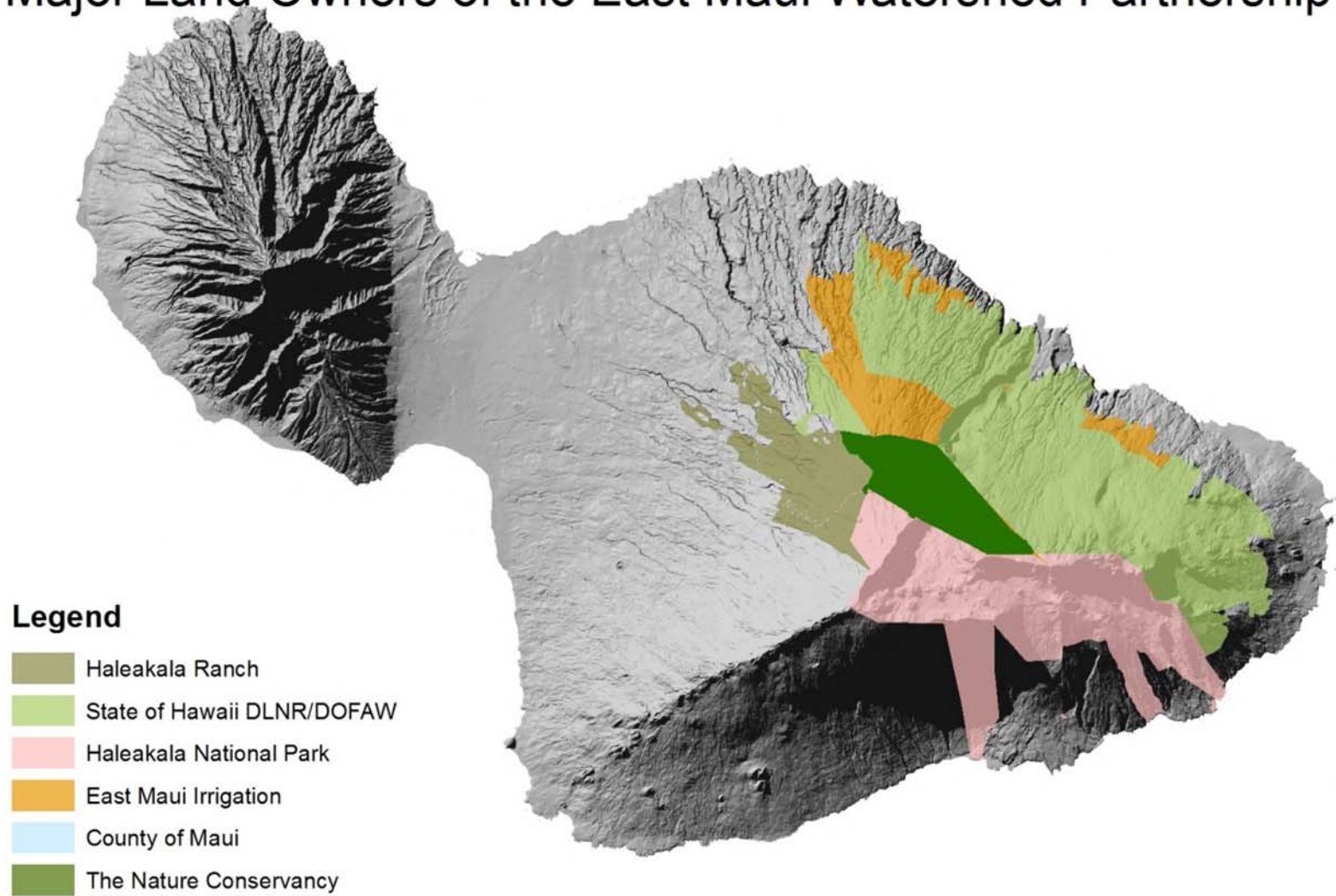
“The overall mission of EMWP is to continue protecting East Maui’s primary water source, including, but not limited to, the native forested watershed by significantly reducing targeted threats.”



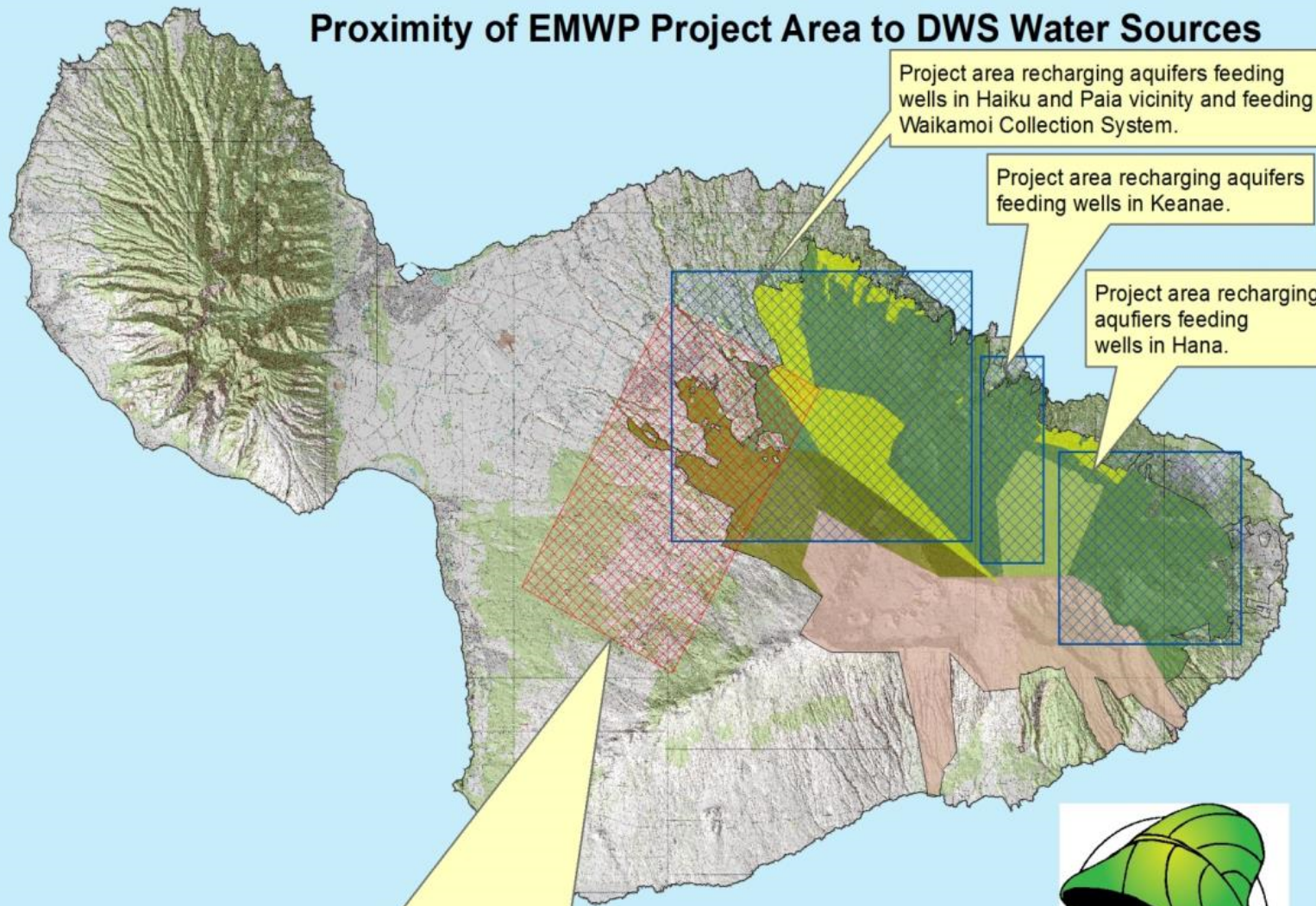
# Partners

- The Nature Conservancy
- East Maui Irrigation
- Haleakalā National Park
- Haleakala Ranch Company
- County of Maui – Department of Water Supply
- State of Hawai‘i – Department of Land and Natural Resources

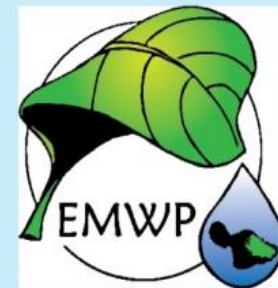
# Major Land Owners of the East Maui Watershed Partnership



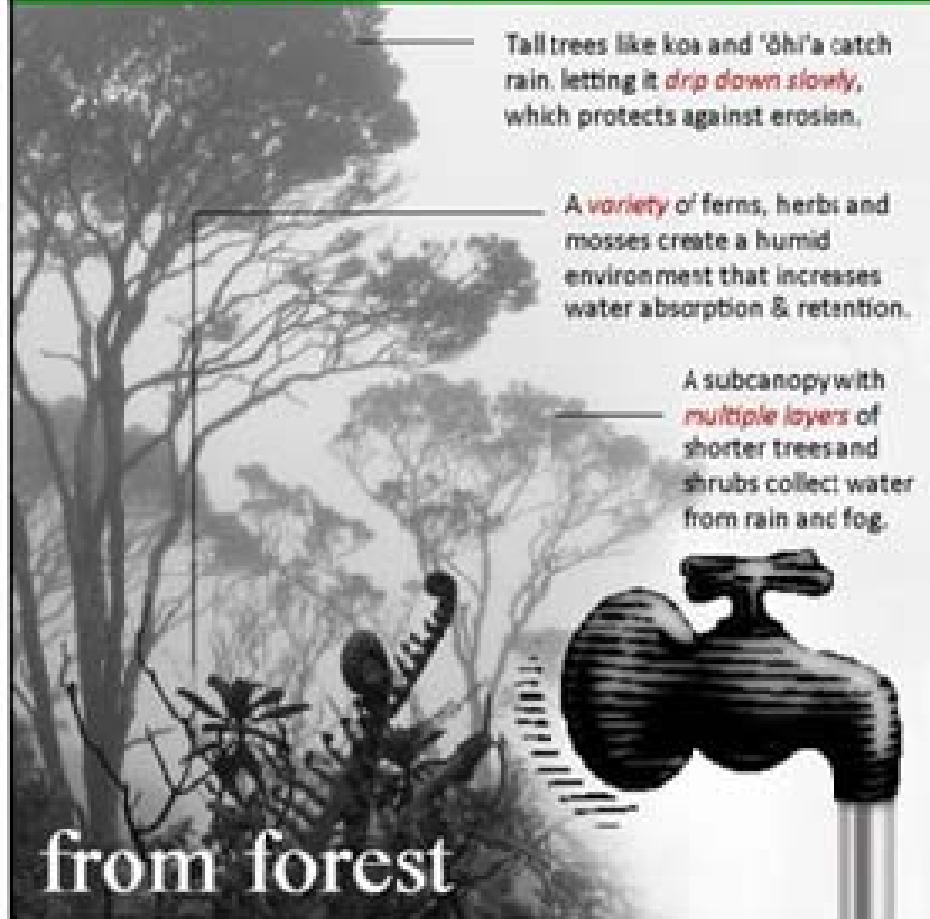
## Proximity of EMWP Project Area to DWS Water Sources



Approximate Extent of Customers Served in the DWS Upcountry District



## Anatomy of a Native Hawaiian Forest



Tall trees like koa and 'ōhi'a catch rain, letting it *drip down slowly*, which protects against erosion.

A *variety* of ferns, herbs and mosses create a humid environment that increases water absorption & retention.

A subcanopy with *multiple layers* of shorter trees and shrubs collect water from rain and fog.

from forest

to faucet

The layers of the native Hawaiian forest act like a giant sponge, slowing down heavy raindrops and soaking up water for release into underground aquifers and streams.

*The Native Hawaiian Forest — the best water capture system ever made!*

Images modified from photographs by Jack Jeffrey, Eric Matsumoto and Dave Quisenberry

## Volunteer Based Watershed Restoration





## Fence Construction Maintenance and Inspection







## Build and Maintain Appropriate Infrastructure





## Remove All Invasive Hooved Animals









Invasive alien weeds like Himalayan ginger (*Hedychium gardnerianum*), miconia (*Miconia calvescens*) and strawberry guava (*Psidium cattleinum*) out-compete native species, creating mono-cultures and completely displacing native vegetation

## Invasive Plant Control







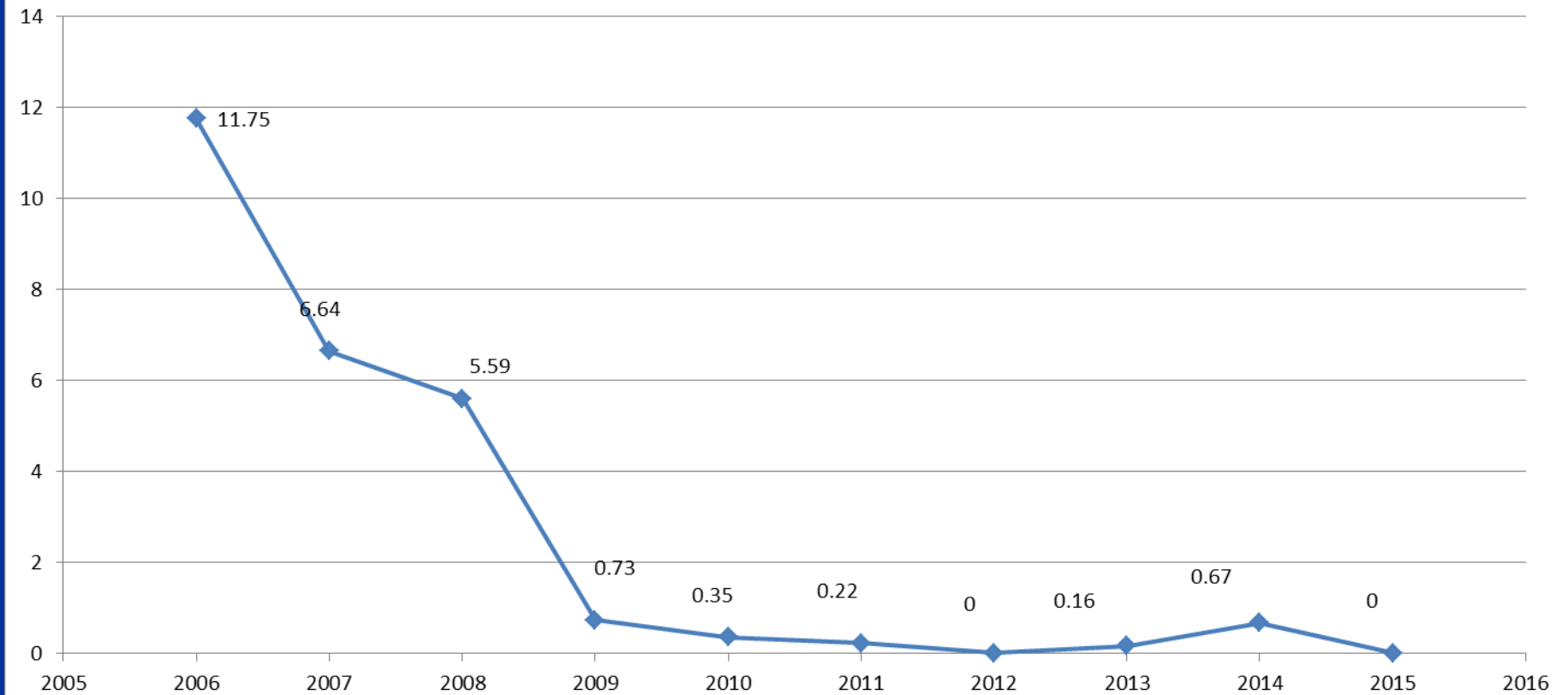
**Native Forest**



**Non-native Forest**

## Ungulate Presence Transects and Non-Native Plant Transects

**EMWP Transect Monitoring:  
% Stations with Ungulate Disturbance**



# Long Term Priorities

- Expand protection efforts on private and public lands closer to surface water collection systems and high value aquifer recharge areas.
- Support efforts to better quantify the effects of watershed management practices on water availability and modify management accordingly.
- Support efforts to contain the spread of Rapid ‘Ōhiā Death (Ceratocystis Wilt of ‘Ōhiā).
- Diversify funding and seek sustainable sources.

Mahalo!



Contract:  
Dan Eisenberg  
[coordinator@eastmauiwatershed.org](mailto:coordinator@eastmauiwatershed.org)  
[www.eastmauiwatershed.org](http://www.eastmauiwatershed.org)