

Disaster, Resilience, International Affairs, and Planning Committee (2023-2025) on 2023-10-18 1:30 PM

Meeting Time: 10-18-23 13:30

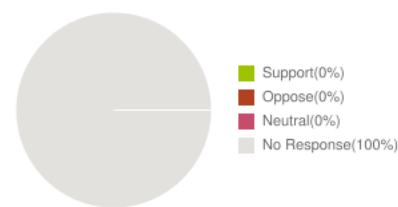
eComments Report

Meetings	Meeting Time	Agenda Items	Comments	Support	Oppose	Neutral
Disaster, Resilience, International Affairs, and Planning Committee (2023-2025) on 2023-10-18 1:30 PM	10-18-23 13:30	2	1	0	0	0

Sentiments for All Meetings

The following graphs display sentiments for comments that have location data. Only locations of users who have commented will be shown.

Overall Sentiment



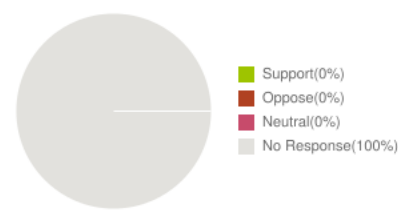
Disaster, Resilience, International Affairs, and Planning Committee (2023-2025) on 2023-10-18
1:30 PM
10-18-23 13:30

Agenda Name	Comments	Support	Oppose	Neutral
DRIP-2(12) UPDATES ON RECOVERY EFFORTS IN RESPONSE TO THE AUGUST 2023 WILDFIRES ON MAUI ISLAND (DRIP-2(12))	1	0	0	0

Sentiments for All Agenda Items

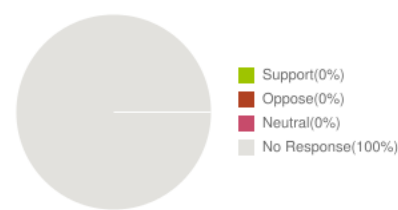
The following graphs display sentiments for comments that have location data. Only locations of users who have commented will be shown.

Overall Sentiment



Agenda Item: eComments for DRIP-2(12) UPDATES ON RECOVERY EFFORTS IN RESPONSE TO THE AUGUST 2023 WILDFIRES ON MAUI ISLAND (DRIP-2(12))

Overall Sentiment



Susan Pcola-Davis
Location:
Submitted At: 12:39pm 10-18-23
Comments

Health and Safety Lahaina

THREE PROFESSIONALS

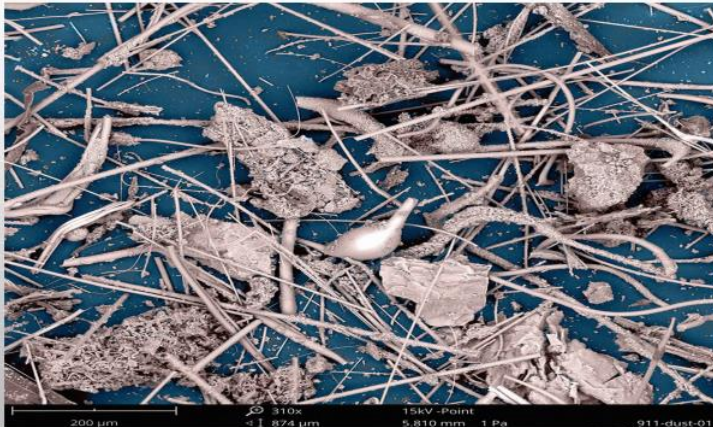
Sources:

1. Maui Council WASSP Committee Meeting, Monday, October 16, 2023
"DANGERS FROM EXPOSURE TO ASH FROM THE FIRES IN MAUI"
JANE WILLIAMS, Executive Director
California Communities Against Toxics
2. Hawaii News Now Press Release, Sunday, October 15, 2023
Dr, Fink, Director, Hawaii Department of Health
Keith Hayashi, Superintendent, Hawaii Department of Education

DANGERS FROM EXPOSURE TO ASH FROM THE FIRES IN MAUI

JANE WILLIAMS, EXECUTIVE DIRECTOR
CALIFORNIA COMMUNITIES AGAINST TOXICS

WHAT EXACTLY ARE YOU BREATHING?



MORE OF WHAT YOU ARE BREATHING...



WHAT IS IN THE ASH?

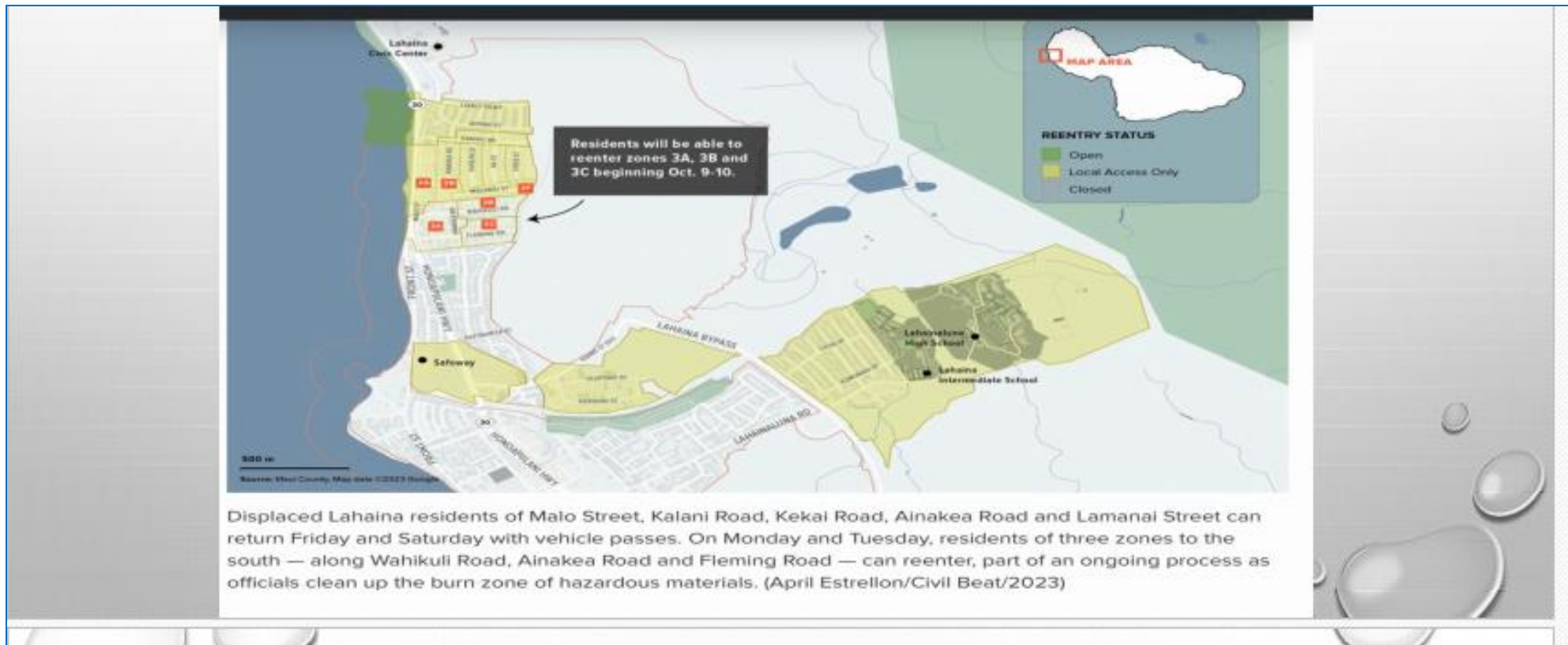
- LEAD, ARSENIC, CADMIUM (NEUROTOXINS WHICH DAMAGE THE BRAIN, CARDIOVASCULAR TOXINS, AND CARCINOGENS)
- VOCs. (POWERFUL CARCINOGENS AND RESPIRATORY TOXINS)
- POLYAROMATIC HYDROCARBONS (POWERFUL CARCINOGENS)
- DIOXIN/FURANS (EXTREMELY POWERFUL CARCINOGENS)
- ASBESTOS/SILICA (RESPIRATORY TOXINS WHICH DAMAGES THE LUNGS)
- PFAS COMPOUNDS
- ???????????



WHY ARE WE SO CONCERNED?

- IT IS RARE FOR AN ENTIRE CITY TO BURN TO THE GROUND.
- USUALLY HAPPENS ONLY DURING TIMES OF WAR, WHEN CIVILIAN POPULATIONS ARE EVACUATED.
- HERE, IN LĀHAINĀ AND KULA, PEOPLE ARE MOVING BACK INTO THE ZONE COVERED BY THIS ASH AND WANTING TO RE-INHABIT IT QUICKLY FOR A NUMBER OF REASONS.
- THIS CREATES EXPOSURE SCENARIOS THAT ARE EXTREMELY PROBLEMATIC FOR PUBLIC HEALTH.
- THE “DISASTER AFTER THE DISASTER” HAS BEGUN.

PLANS TO PUT 3,000 STUDENTS NEXT TO THE ASH SHOULD BE REEVALUATED



Hawaii News Now Press Release, Sunday, October 15, 2023

These are unvalidated data that was just received from the ash sampling and we are letting you know about some elevated toxic substances.

Dr. Fink, Director, Hawaii Department of Health

- Preliminary Ash results from testing on Friday night from the Kula area.
- Exceedances: extremely high levels of arsenic, high levels of lead and cobalt
- The Arsenic, which is of the greatest concern is 140 times above the Environmental Action Level set by the Department of Health
- We would expect that the disturbances would be temporary, and as the wind blows it would be temporary and things would dissipate.

(Depending which way the wind is blowing)

Keith Hayashi, Superintendent, Hawaii Department of Education

- Based on new DOH testing from Kula fire, we now have more information that confirms the concern about the Ash and dust in the area where structures burned.
- Our schools will be flexible on student absences during this first week of reopening, as families make decisions.
- Extensive Environmental Testing of soil and drinking water which all came back safe, for soil there was no visible Ash at any of the schools and the soil testing results indicate ash from the burn sites have not settled up at our schools.

Hawaii News Now Press Release, Sunday, October 15, 2023

These are unvalidated data that was just received from the ash sampling and we are letting you know about some elevated toxic substances.

Dr. Fink, Director, Hawaii Department of Health

- So the exposure would likely be potentially intermittent but there **may be some accumulation.**
- So cleaning surfaces on a daily basis, as a matter of routine would be particularly recommended.
- We're working with the county and the EPA to facilitate, expedite, prioritize the application of Soiltac along the impacted area that borders those areas where people have returned, on the outside.

Keith Hayashi, Superintendent, Hawaii Department of Education

- We've been reassured that the likelihood that the conditions at schools will become harmful, in the near future, is very low.
- We will be continuing **bi-weekly wipe tests** in classrooms to test for any particles settling on surfaces
- Department of Health has consistently said that it would be a concern if that Ash became Airborne.

Hawaii News Now Press Release, Sunday, October 15, 2023

These are unvalidated data that was just received from the ash sampling and we are letting you know about some elevated toxic substances.

Dr. Fink, Director, Hawaii Department of Health

QUESTIONS

1. Can you mention the number; the times over the action limit for the other two substances; cobalt and lead?
2. Then can you tell us, for this most concerning arsenic level, how dangerous is that? What can be the health effects from all three?
3. Can you touch on what you know maybe if people don't do precautions or you know if they ingest some of these things what can be kind of worst case scenarios?

1A. So I said the arsenic level was about 140 times above the Environmental Action Level. Lead was a little over three times the Environmental Action Level and Cobalt was about 20 times above the Environmental Action Level.

2A. All of these things, at a high enough exposure, are potentially toxic.

3A. I think there's a range of what these substances can cause. from a health perspective. Based on the amount of exposure and over the period of time

Keith Hayashi, Superintendent, Hawaii Department of Education

QUESTIONS

1. I think you guys mentioned before that 300 indoor air filters were installed between the three schools, are those in place? Are they working? Are they expected to like be more of an extra precaution?

1A. First, okay, so we do have HEPA filters that have been, units that have been placed in every classroom and in our offices. So, in the event that we do need to utilize them, those filters filter air and pars out in within the classrooms.