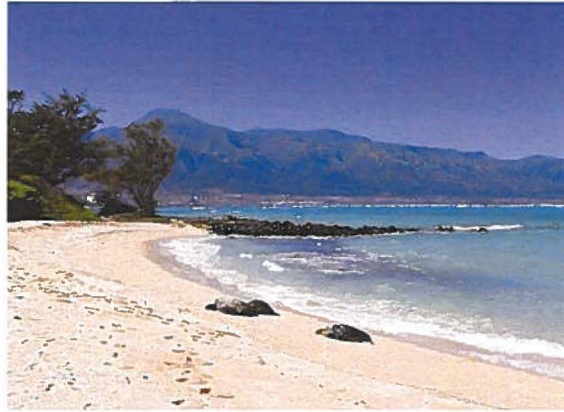


HOMELESS OUTREACH



EFFECTS OF SHELTERING IN PLACE

RECEIVED AT WQSSP MEETING ON 12/02/2024



OUR ISLAND, OUR HOME

Why we should clean up

HOW WE CLEAN & STORE



Extra Space Storage 340 Ala Makani St Kahului, HI 96732

3 STEP PROCESS

We take a 3 step approach to clean up the items of each individual. We supplement our work by contracting a specialized 3rd party to inventory, wrap, transport, and store the belongings.



Step 1

Inventory: Items are inventoried and each individual is provided with an itemized list of what will be stored along with information on who to contact to receive their items.

*3rd party

H.T.M (Hala' Toa' Mui) - certified contractors based out of oahu specilizes in safe-respectful clean ups.

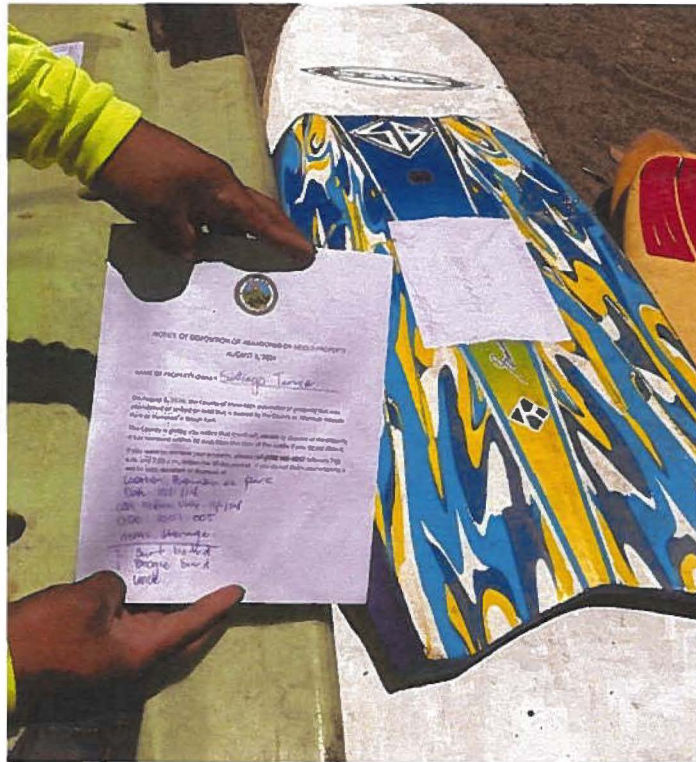
Step 2

Wrap: Belongings are respectfully wrapped together making them easy to transport while keeping it safe.

Step 3

Storage: The wrapped items are transported and stored at a designated storage facility. Items are not retrieved but instead the 3rd party delivers the items to the owners by apointment.

INVENTORY



Inventory and information provided to persons of their items

WRAP



All items are respectfully bundled and wrapped for safe transport and storage

STORAGE



Items stored out of the elements safe ready for delivery back to the individual

RESULT



Clean beaches to be enjoyed again for: families, fishing, diving, surfing.

HIDDEN ENVIRONMENTAL DESTRUCTION

The effects of no clean ups; sheltering in place

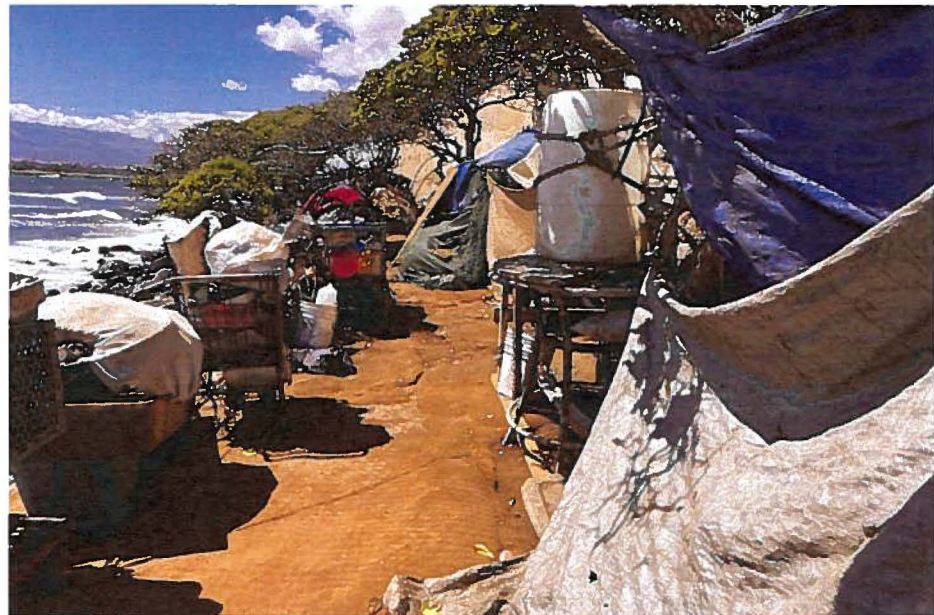
WHAT WE CAN SEE



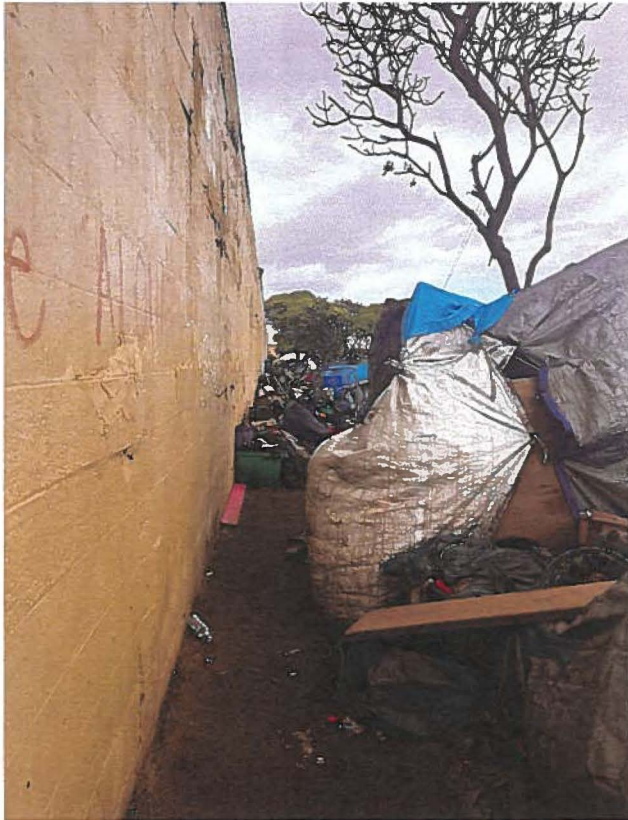
- 01** Our once beautiful beach and landscapes are covered in a slum-like atmosphere, where waste runs off in to the ocean - affecting all who fish, dive, surf, and swim in the area.

Major negative ecological effects are to be thought of.

02



WHAT WE CANNOT SEE



03



04

Hidden dangers; piles of garbage created by the homeless in dense brush areas, pose significant health and ecological risks. Battery waste leak into the ground and petroleum plastics leach harmful chemicals into possible future crop and housings lands.

WHAT WE CANNOT SEE



05



06

Potential **Waste Fires** can cause massive community devastation if left untreated. Batteries hidden in massive decomposing waste piles located in brush areas out of sight could be the catalyst to major destruction.