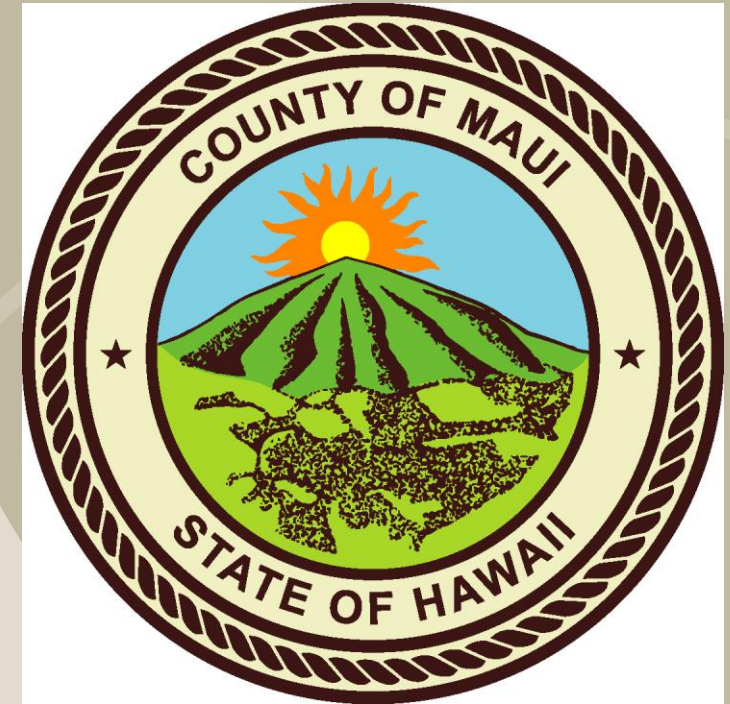




# Kula Ag. Park Capital Improvement Projects

Department of Agriculture  
Maui County

# County of Maui Agriculture Park Program



# Overview of Kula Ag. Park

- 445 acre Kula Agricultural Park is straddled by Pulehu Road and Omaopio Road
- There are 31 farm lots ranging from 10 to 30 acres and supports 25 farmers
- The Ag. Park program is to promote the development of diversified ag by providing appropriately sized lots at reasonable rent with long term tenure

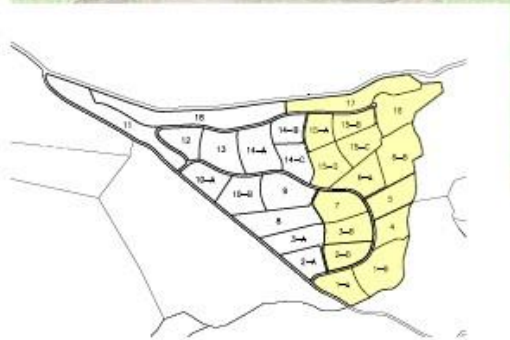
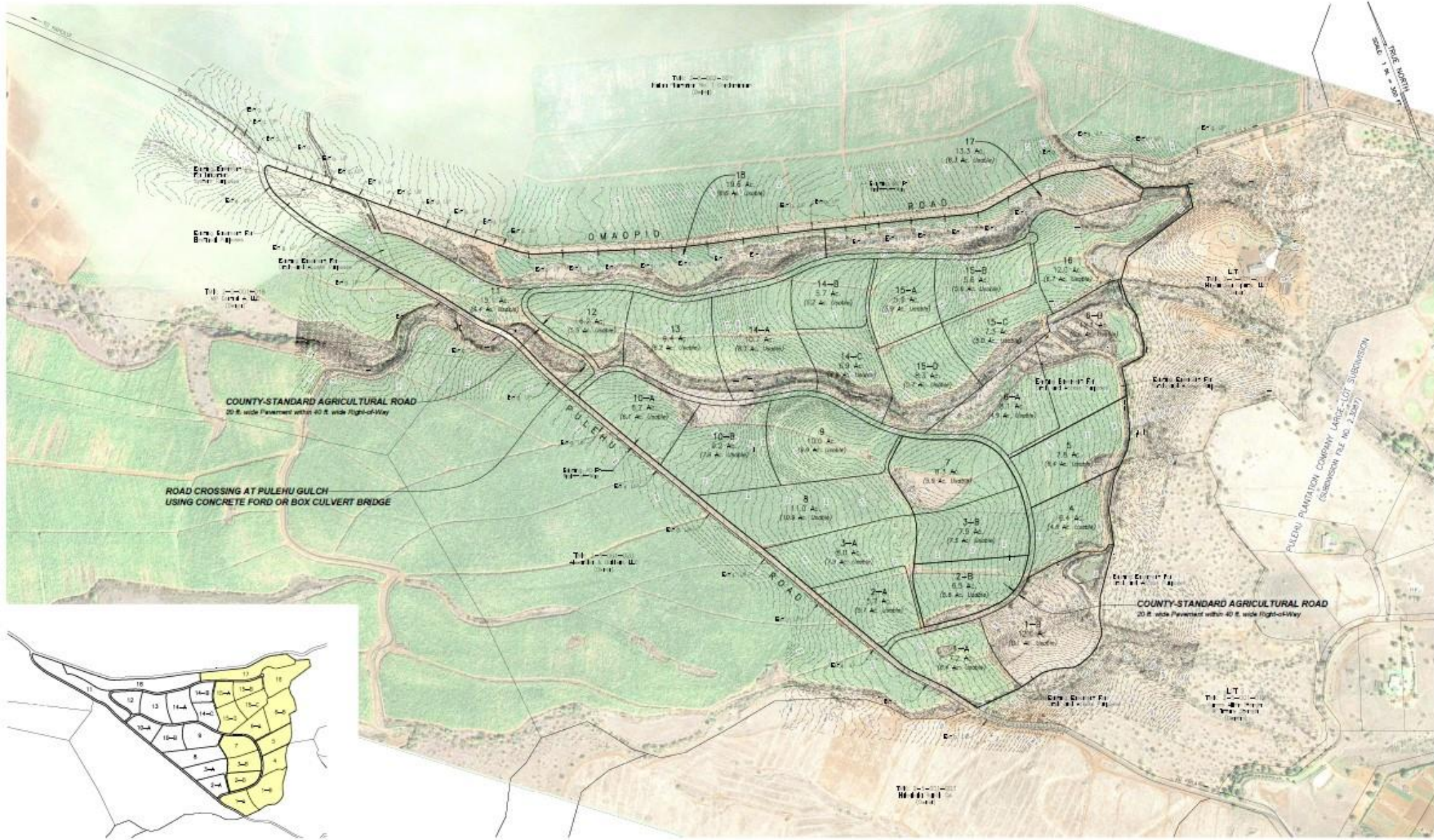


# Background of the Kula Agriculture Park Expansion



# Goals of the Upcountry Maui Ag. Park (UMAP)

- The expansion of the Kula Ag Park (KAP) supports the Hawaii State Plan Chapter § 226-7 items (2) and (3) because the plan identifies agriculture as an economic driver for the State of Hawaii.
- The Maui Island Plan also identifies agriculture as an economic driver.
- Supporting agriculture helps to diversify the economy to not be solely dependent on tourism.
- The new \_\_\_\_acre UMAP will provide an additional 28 ag lots to farmers

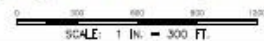


**MOST SUITABLE USE**

- NATURAL OR ORGANIC FARMING
- TRADITIONAL FARMING

**ALTERNATIVE NO. 3**  
**PRELIMINARY 28 LOT SUBDIVISION PLAN FOR UPCOUNTRY MAUI AG PARK**

Tax Map Key 2-5-001: 002 (262.288 Acres)





# Phases of the Expansion Project

WHAT EACH PHASE WILL ACCOMPLISH AND THE COST

## Phase 1 – Construction of Booster Pump

The new booster pump station is required per an agreement between Mahi Pono and the County in order to supply 1.5 MGD to KAP and 1.0 MGD to UMAP.

Design by Austin, Tsutsumi & Associates	\$433,472	Encumbered FY24
Construction by P. B. Sullivan	\$3,957,532.22	Start Jan. 2025, end Dec. 2026

# Phase 2 – Construction a 2.4 MGD Concrete Reservoir

Reservoir provides water for UMAP as well as additional storage for fighting fires and for drought amelioration

Design by Austin, Tsutsumi & Associates	\$1,973,785	Most funds encumbered FY24
2.4 MGD Concrete Reservoir	\$22,701,000 needed	Start early 2026, end mid 2027

# Phase 3 – 12” Water Main

The water main will connect the new 2.4 MGD reservoir to UMAP and will be gravity fed

Estimated cost of design	\$150,000 Needed	
12” Main line	\$1,000,000 Needed	Start 2026, end mid to end of 2026

# Phase 4 – Construction of Up Country Maui Ag. Park

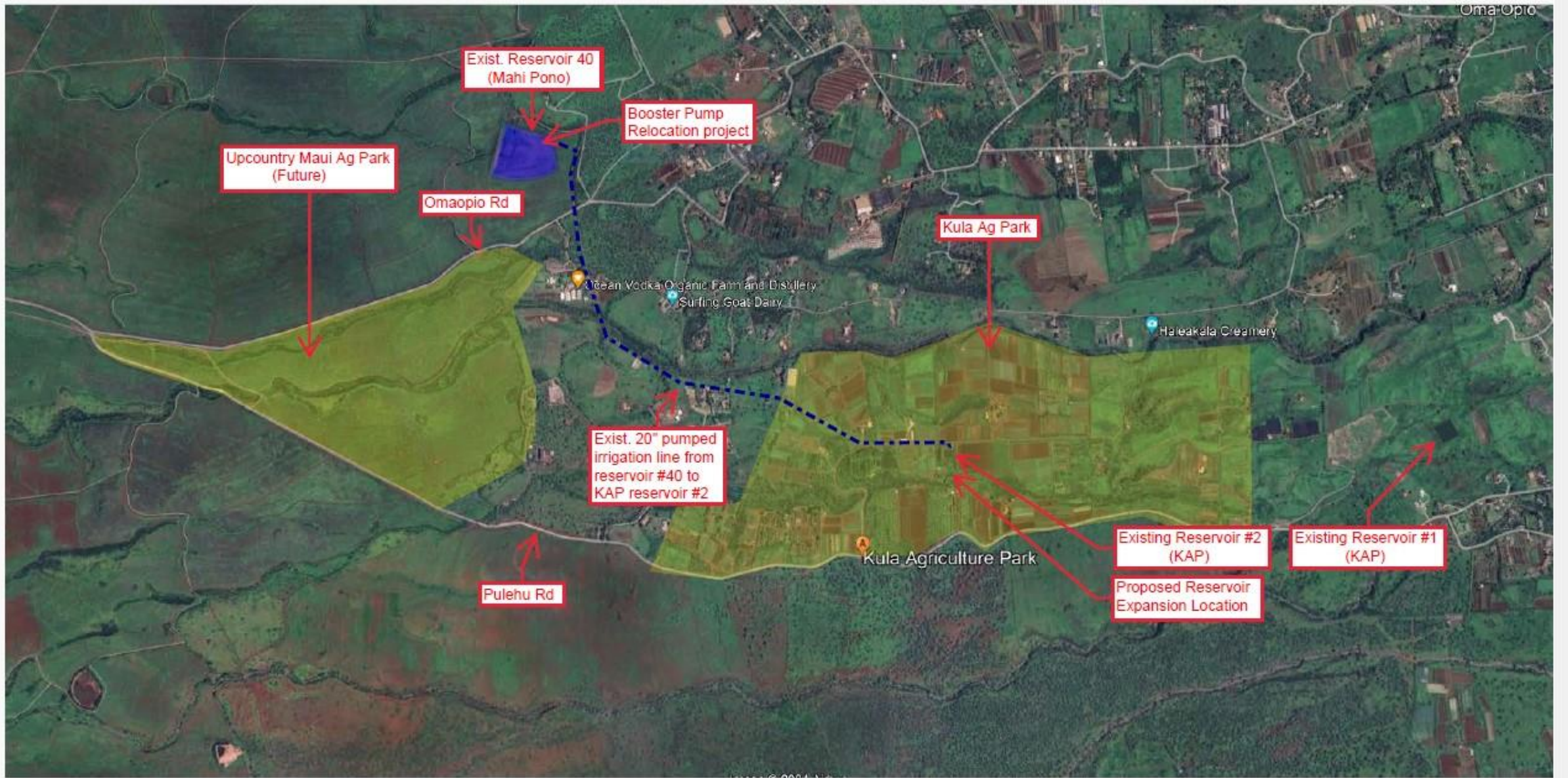
General Site Management	\$140,000	
Earthwork	\$1,500,000	
Roadway improvements	\$2,121,250	
On site Water System improvements	\$2,899,000	
Electrical System improvements	\$750,000	
20% Contingency	\$1,482,050	
5% for escalation costs	\$370,512.50	
TOTAL	\$9,262,812.50 Needed	Early 2026, end Mid 2027

# Total Costs

Phase 1	Design and construction of Booster	\$4,391,004.22
Phase 2	Construction of 2.4 MGD concrete reservoir	\$24,674,785
Phase 3	Construction and installation of 12" water main	\$1,150,000
Phase 4	Construction of the Upper Maui Ag. Park (UMAP)	\$9,262,812.50
Construction Management	Provide oversight on all phase of the project	\$3,000,000
	Total	\$42,478,601.22

# Takeaways

- Supports growth and development of diversified agriculture
- Promotes the agriculture industry





Thank you

R. KALI ARCE & JEFFERY  
JURICKOVICH

(808) 270 - 8281

Email

[www.website.com](http://www.website.com)

