


Presentation to  
Maui County  
Council CARE  
Committee  
June 29, 2022







HAWAI'I LAND TRUST

SAVE THE WETLANDS



HUI

OLA I KA WAI  
WATER IS LIFE

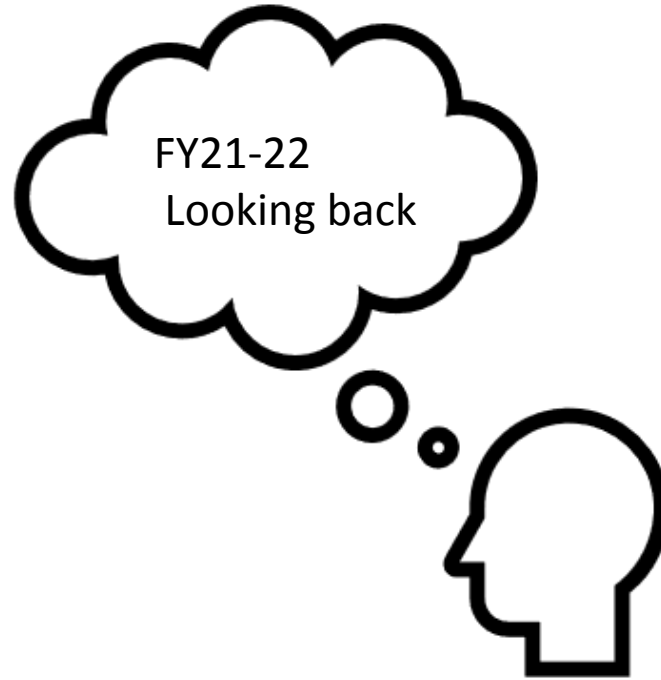


FIRE WATER WIND EARTH

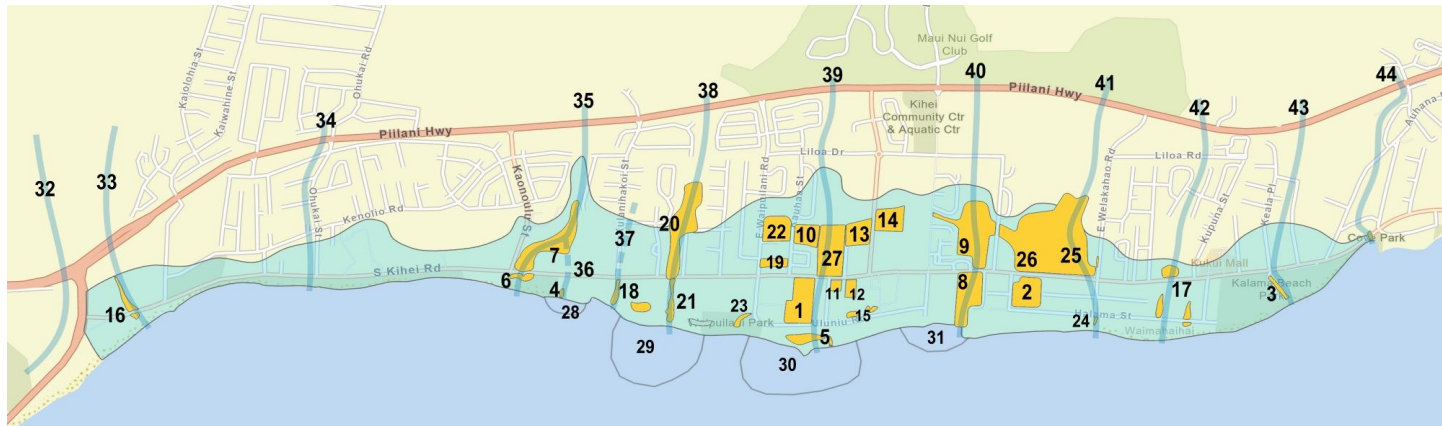
The central graphic is a vertical poster on a light green background. At the top, the text "SAVE THE WETLANDS" is arched over a wavy line. Below this is a black inverted triangle containing a white water drop. Underneath is another black inverted triangle with the word "HUI" in white. Below that is a horizontal line. The text "OLA I KA WAI" and "WATER IS LIFE" is centered below the line. At the bottom, four icons represent the elements: a triangle for fire, an inverted triangle for water, a triangle with a horizontal line for wind, and an inverted triangle with a horizontal line for earth.

# Presentation Overview

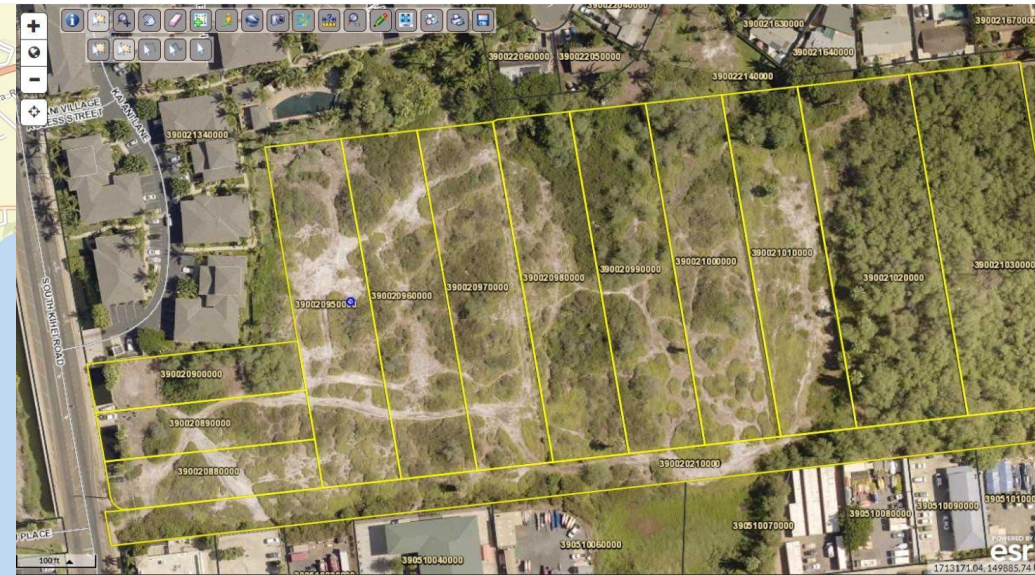
- Mapping and inventory
- Restoration
- Volunteers
- Public education
- Culture



# Mapping and Inventory Keokea-Waiohuli 44 Wetland Features and 116 Tax Map Keys of properties located in wetlands



- |                                     |  |
|-------------------------------------|--|
| 1 Ewa Wetland                       | 23 Waipuilani South                        |
| 2 Halama Wetland                    | 24 Welakahao Kai                           |
| 3 Kalama Wetland                    | 25 Welakahao Mauka                         |
| 4 Ko'ie'ie Wetland                  | 26 Wesco Site                              |
| 5 Kawililipoa VFW                   | 27 Yee's Wetland                           |
| 6 Kulanihakoai Makai                | 28 Kalepolepo Fishpond                     |
| 7 Kulanihakoai Mauka                | 29 Waiohuli Kai Fishpond                   |
| 8 La'ie Makai                       | 30 Keokea Kai Fishpond                     |
| 9 La'ie Mauka                       | 31 Kealamoemalia Fishpond                  |
| 10 Meadowlands                      | 32 Keahuaiwi Stream,                       |
| 11 Nohokai                          | 33 Waiakoa Stream                          |
| 12 Outdoor market (1204 S KIHEI RD) | 34 Ohukai Stream                           |
| 13 Pi'ikea North (Longs)            | 35 Kulanihakoai Stream                     |
| 14 Pi'ikea South (Azekas)           | 36 Ko'ie'ie Stream                         |
| 15 Uluniu site(s)                   | 37 Waiohuli Stream                         |
| 16 Waiakoa Wetland                  | 38 Waipuilani Stream                       |
| 17 Waimahaihai                      | 39 Kawililipoa (aka Pi'ikea) Stream        |
| 18 Waiohuli Kai                     | 40 Lā'ie Stream                            |
| 19 Waipuilani 16e                   | 41 Kēōkea Stream                           |
| 20 Waipuilani Gulch                 | 42 Waimahaihai Stream                      |
| 21 Waipuilani Kai                   | 43 Kihei Stream                            |
| 22 Waipuilani Mauka                 | 44 Kaluaihakoko (aka Nawawaeolika) Stream. |



For FY 23 expand area of mapping and inventory to include from Ma'ālaea to Makena

Scientific investigations – criteria and characterizations of wetlands – paleoenvironmental, soils, plants, water quality

**Restoration** 2 parcels just under 2 acres. Removed 12,000 cubic ft of invasive plants, and 1500 lbs of rubbish; planted 157 additional native plants increasing number of species from 3 to 9

BEFORE  
Invasive Plucheia



Berms of uprooted invasive plants



AFTER Native Akulikuli



Installing native plants



For FY 23 add an additional adjacent parcel in Keokea Gulch to restoration work area; remove 16,000 cubic feet of invasive plants and propagate and install 1200 native plants

# Volunteers

8 workdays;  
114 volunteers;  
456 hours of labor

FY 23:  
24 Workdays  
240 volunteers  
960 hours

## Lai'e Pond South



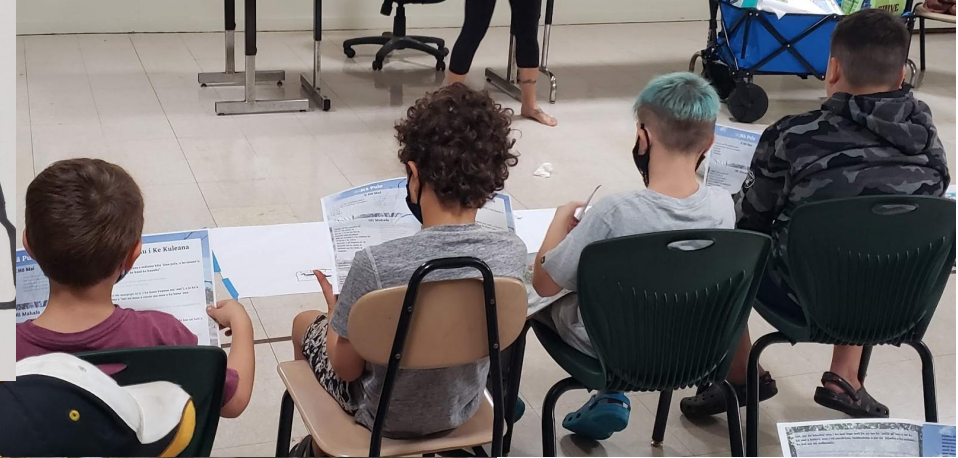
October 2, 2021



# Public Education: What is a wetland? Wetland Functions and Values

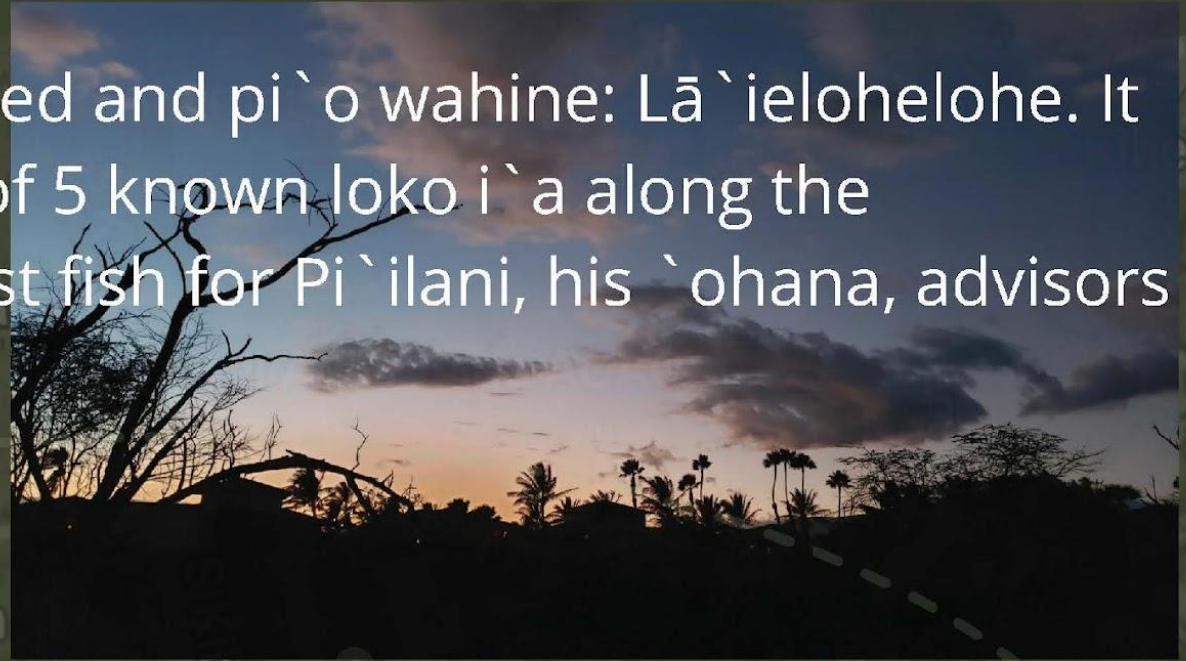
Website <https://savethewetlands.org/> ;

800 followers on social media; 9 public presentations; 6 live/archived broadcasts; one wetlands camp for keiki with Learning Endeavors



FY 23: Workshops, presentations, Virtual Conference, Educational program for 420 students, after school clubs, one PD course for teachers

Lā`ie wetland was a gift to Pi`ilani`s beloved and pi`o wahine: Lā`ielohelohe. It was connected to a loko i`a that was one of 5 known loko i`a along the coastline, that provided some of the tastiest fish for Pi`ilani, his `ohana, advisors and hoaaloa.



3 Kilo events, `ōlelo Hawai`i workbook and calendar

FY 23 4 Kilo events; expanded educational workbook, one calendar and one video in `ōlelo Hawai`i

In different mo`olelo `ohana (family stories), it is believed that the kaikamahine (daughter) of Pi`ilani and Lā`ielohelohe, Kala`aiheana visited and continues to occasionally visit the area in her deified form: Kihawahine, the Mo`o goddess of Maui.

# MAHALO!

<https://savethewetlands.org/>

<https://www.facebook.com/groups/2938396359751786/>

<https://www.youtube.com/watch?v=CvqkA2tTd7s>

<https://gokihei.org/news/watch-the-12-16-2021-meeting-about-the-wetlands-and-other-south-maui-issues>

<https://gokihei.org/news/watch-the-12-16-2021-meeting-about-the-wetlands-and-other-south-maui-issues>

[mauiwetlands@gmail.com](mailto:mauiwetlands@gmail.com)