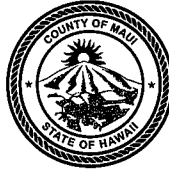


ALAN M. ARAKAWA  
Mayor

WILLIAM R. SPENCE  
Director

MICHELE CHOUTEAU McLEAN  
Deputy Director



RECEIVED

2017 OCT 25 AM 9: 43

COUNTY OF MAUI

**DEPARTMENT OF PLANNING** OFFICE OF THE MAYOR

October 25, 2017

Honorable Alan M. Arakawa  
Mayor, County of Maui  
200 South High Street  
Wailuku, Hawaii 96793

For Transmittal to:

Honorable Robert Carroll, Chair  
and Members of the Land Use Committee  
200 South High Street  
Wailuku, Hawaii 96793

APPROVED FOR TRANSMITTAL

*William Spence* 10/25/17  
Acting Mayor Date

Dear Chair Carroll and Members:

**SUBJECT: DISTRICT BOUNDARY AMENDMENT (DBA) MAP FOR  
4356 HANA HIGHWAY (HANA) (LU-46)**

The Department of Planning (Department) is in receipt of your letter dated October 23, 2017, regarding the above-referenced application. The letter requests the District Boundary map (Exhibit "B") be assigned a map number. Hence, that number is "DB-304" (see attachment).

Should you have any questions, please feel free to transmit them to the Department via transmittal through the Office of the Mayor.

Sincerely,

WILLIAM SPENCE  
Planning Director

Attachment

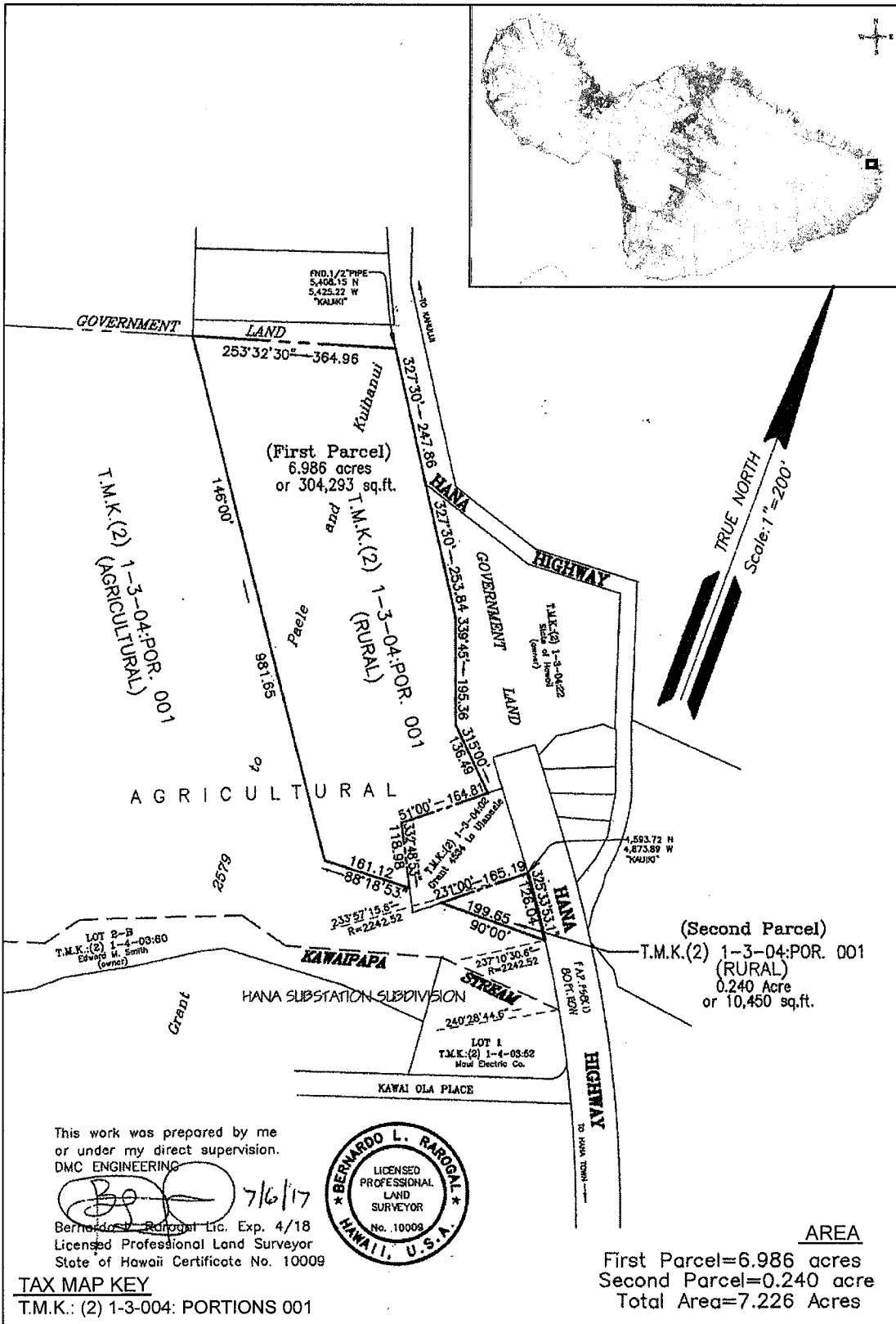
- xc: Michele Chouteau McLean, Deputy Director (PDF)
- Clayton I. Yoshida, Planning Program Administrator (PDF)
- Paul F. Fasi, Staff Planner (PDF)
- Maui Planning Commission Members (PDF)
- Corporation Counsel

WRS:PFF:lak

Project File  
General File

K:\WP\_DOCS\PLANNING\RFC\2014\0072\_HanaAffordableHousing\Dept\_Response\_DBA Map.doc

RECEIVED  
2017 OCT 25 AM 10: 05  
OFFICE OF THE  
COUNTY COUNCIL



**LAND USE DISTRICT BOUNDARY AMENDMENT MAP NO. DB-304**  
**HANA, MAUI, HAWAII**  
**FROM AGRICULTURAL DISTRICT TO RURAL DISTRICT**