



# **Hawai'i's Climate Action Pathways- Maui County Sustaining Progress**





# Overview of Presentation

- Current landscape- federal administration changes in policy and funding
- Climate Action Pathways
- Grants-to-Project Bridge
- How the county can help





# Updates on Impacts of Policy and Funding Changes for Climate action:

- Enormous cuts in federal funding to Hawai`i ~\$100mil
- Ending of 11 climate-related tax credits (listed at the end of the presentation)
- Local Nonprofits are struggling to survive, and less aid to the community is available
- UH system lost funding from government-backed funding sources, including \$45 million to Title III Higher Education Act, providing grants for underserved communities, and changes to indirect costs, etc.
- Reduced federal aid will lead to less state aid and more pressure on local County budgets, rural counties will face larger challenges

# Climate Change Impacts in Hawai'i



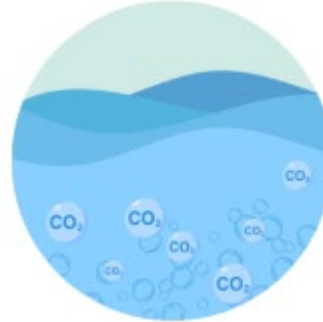
**Rising Sea  
Levels**



**Rising  
Temperatures**



**Less & Heavy  
Rain**



**Ocean  
Acidification**



**Action**

## State focus is on affordability, safety, and health:

- **Affordability:** Energy, sustainable fuels, food, infrastructure costs, economy-wide, equitable, etc.
- **Safety:** Mitigating climate-related safety issues, flooding, wildfires, increased severe storms, etc.
- **Health:** Heat-related illness, food security, air quality (i.e. wildfires), water quality, and freshwater availability, etc.



# Planning for Action





# Climate Action Pathways



NATURE-BASED  
RESILIENCE AND  
ADAPTATION TO  
CLIMATE CHANGE  
IN HAWAII



HAWAII DEPARTMENT OF TRANSPORTATION  
HIGHWAYS DIVISION

HAWAII PATHWAYS  
TO  
DECARBONIZATION

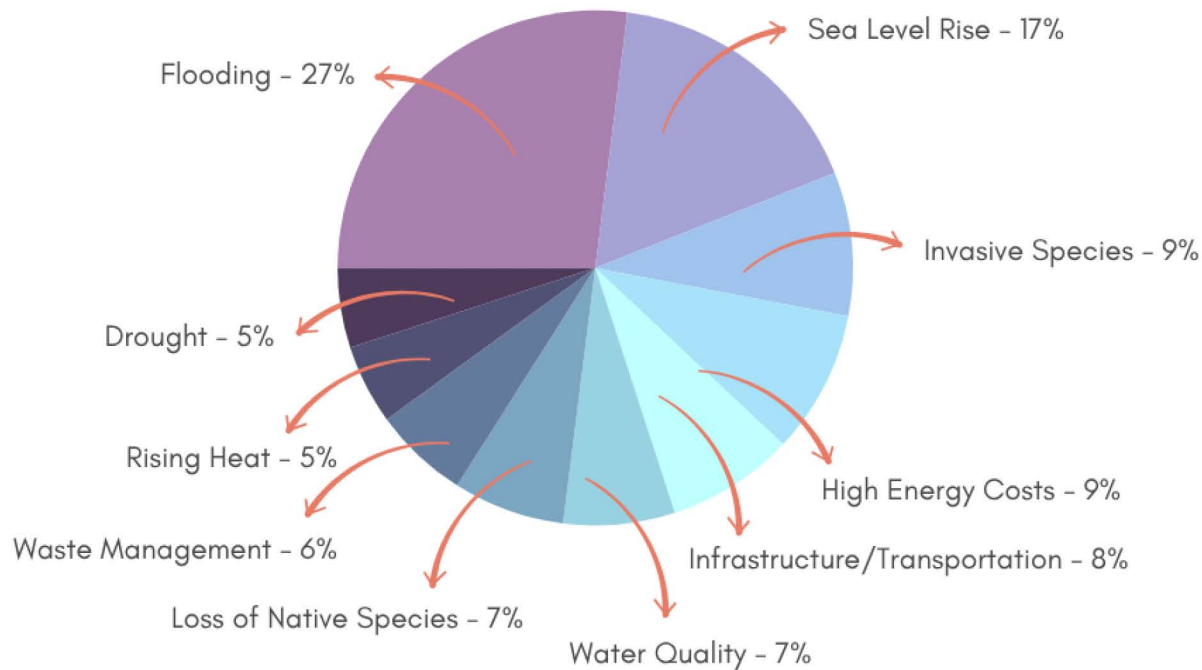
ACT 238, SESSION LAWS OF  
HAWAII 2022

Revised July 2023, with final report, 2023

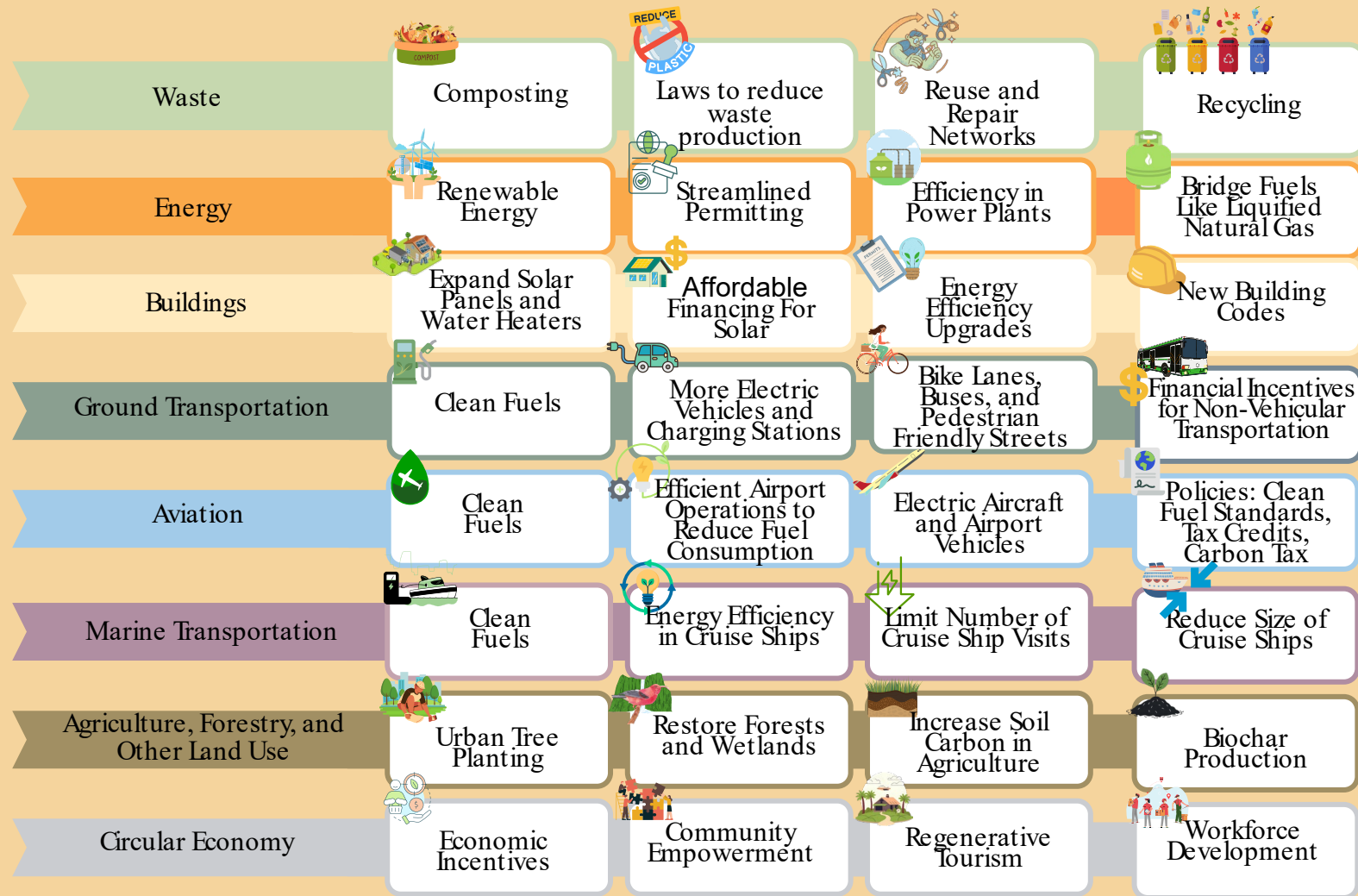
December 2023



## Community Feedback on Climate Change concerns









# Taking Action

---





# Help review HI Climate Action Pathways and share with others

## E KOMO MAI

### WELCOME TO THE HAWAI'I CLIMATE CHANGE PORTAL

#### WE WANT YOUR MANA'O!

The Hawai'i State Climate Change Mitigation and Adaptation Commission (CCMAC) invites you to help guide State actions to reaching an affordable, healthy, safe future. We worked with community members and technical experts to build this draft and want to ensure community voices guide the next steps. We're inviting feedback from everyone on shaping these strategies, and we're especially interested in hearing your thoughts on:

- What are we missing?
- Is there anything you don't like or have concerns about?
- How would you like to see these actions implemented in your community?

This platform will be open for your feedback through September 30, 2025.

For more information on how to interact with us, please click on the Introduction tab below. We look forward to hearing your thoughts!

[Click to  
Learn More](#)

[Submit Your  
Thoughts](#)

**HAWAI'I CLIMATE COMMISSION**

## HI Climate Action Pathways

The Hawai'i State Climate Change Mitigation and Adaptation Commission (CCMAC) invites you to help guide State actions to reaching an affordable, healthy, safe future. We worked with community members and technical experts to build this draft and want to ensure community voices guide the next steps. We're inviting feedback from everyone on shaping these strategies, and we're especially interested in hearing your thoughts on:

- What are we missing?
- Is there anything you don't like or have concerns about?
- How would you like to see these actions implemented in your community?

This platform will be open for your feedback through September 30, 2025.

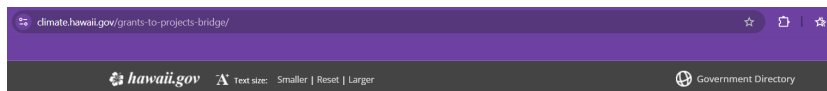
For more information on how to interact with us, please click on the Introduction tab below. We look forward to hearing your thoughts!

[Introduction](#) [Energy](#) [Buildings and Energy Efficiency](#) [Ground Transportation](#)  
[Air Transportation](#) [Marine Transportation](#) [Agriculture, Forestry, and Other Land Use](#) [Waste](#)  
[Circular and Wellbeing Economy](#)

[Create an Account](#)

to share your thoughts

# Grants-to-Project Bridge



State of Hawaii  
Climate Change Portal

Search this site



Home Critical Decade HI Climate Action HI Commission HI Resources HI Equity HI Events

Home » Grants-to-Projects Bridge



Climate action starts here! If you have a climate resilience, mitigation, or adaptation project click the button below to submit your project to our Grants-To-Projects Bridge. We have already connected community, non-profit, county and state projects to funding opportunities and each other to leverage resources and share knowledge on creating a climate ready Hawaii.

Submit Your Project

Once you submit, we will:

- Contact you to discuss your projects
- Connect you with other potential collaborators working in the same area
- If available, provide guidance to access technical resources to help develop concepts and projects

A banner image featuring a stylized landscape with mountains and a bridge. A pink speech bubble in the center contains the text 'GRANTS-TO-PROJECTS BRIDGE'.

## Project ideas

Submit your project ideas big or small for climate resilience, ghg sequestration, mitigation and adaptation.

veur@hawaii.edu [Switch account](#)

Not shared

\* Indicates required question

Organization \*

Your answer

Website or Social Media

Your answer

Name \*







# Examples of Actions

I CAN FIGHT CLIMATE CHANGE BY...

## State and County Climate Actions



Protecting our drinking water through  
Conserving watersheds



Supporting local climate smart food production



Fleet electrification



Energy efficiency incentives



HGIA solar loans



Policies and restoration of reefs for resilience and food security



Transportation Choices



More renewable energy



Making energy efficient changes in our household



Reducing my consumption by buying less



Plant trees



Aloha 'āina



Eating green to lower CO2



Eating local foods



Volunteering, advocating, and staying informed



Having conversations & learning from each other



Using sustainable transportation



Protecting native plants and birds



Work together



Walking on dedicated paths



Advocating for safer streets for everyone



Composting



Using low-flow showerheads and conserving water



Fixing water leaks promptly



Unplugging and turning off devices



Reduce Reuse & Recycle



Turning off lights



Using mineral based sunscreen



## Opportunities for State and County Collaboration

- Leverage State projects and funding with coordinated efforts and local technical assistance.
  - Many projects in Maui County Projects have been submitted through Grants-to-Projects Bridge
- Incorporate climate change considerations for all CIP and operations actions.
  - i.e. bike lanes for new or repaved roads, trees, and green spaces for cooling, energy efficiency etc.
- Identify Maui County specific actions/sites for implementation of the CAP.







## Maui County can help us with these challenges

- Streamlining permitting for rooftop and utility scale solar
- Increased multimodal opportunities
- Identify gaps and opportunities for green jobs.
- Fleet conversion
- Energy efficiency in County buildings
- Waste Diversion
- Outreach and connecting to communities
- Identifying and supporting disadvantaged communities.





## Maui County can help us with these challenges

- Support projects addressing multiple issues:
  - Agroforestry
    - Improve water management by reducing runoff and erosion, enriching soils, boosting crop yields, and carbon sequestration, etc.
  - Localized circular economy efforts
    - Green micro-manufacturing hubs
    - Cross-sector projects, i.e. Hawai`i Island waste reduction and soil enhancement project





## Maui County can help us with these challenges

- Support previously proposed and submitted projects:
  - Mobile biochar unit
    - Helps control invasive species, reduces tree fall events in storms, and provides mulch for agriculture and native species restoration efforts
  - Fund native plant seed production projects
    - Relieve bottleneck in native plant material availability, provide materials for rapid disaster response, enable restoration, which will reduce flooding and increase groundwater infiltration





## How you can get involved

Submit climate-related projects to CCMAC's Grants-to-Project Bridge.

We can help find partners and funding, share resources, and assist in moving climate-change related projects forward.

**Visit our Website or reach out to learn more or reach out to me at [veur@hawaii.edu](mailto:veur@hawaii.edu)**





## Ending of Climate-related Tax Credits

- September 30, 2025
  - New Clean Vehicle Credit (Section 30D)
  - Used Clean Vehicle Credit (Section 25E)
  - Commercial Clean Vehicle Credit (Section 45W)
- December 31, 2025
  - Residential Clean Energy Credit (Section 25D)
  - Energy Efficient Home Improvement Credit (Section 25D)
- June 30, 2026
  - New Energy Efficient Home Credit (Section 45L)
  - Alternative Fuel Refueling Property Credit





## Ways to connect

### Social Media: Instagram and Facebook

**@HI\_Climate**

## Contact Us

Leah Laramee

Hawai'i Climate Change Mitigation and Adaptation  
Coordinator

Email: [Leah.J.Laramee@hawaii.gov](mailto:Leah.J.Laramee@hawaii.gov)

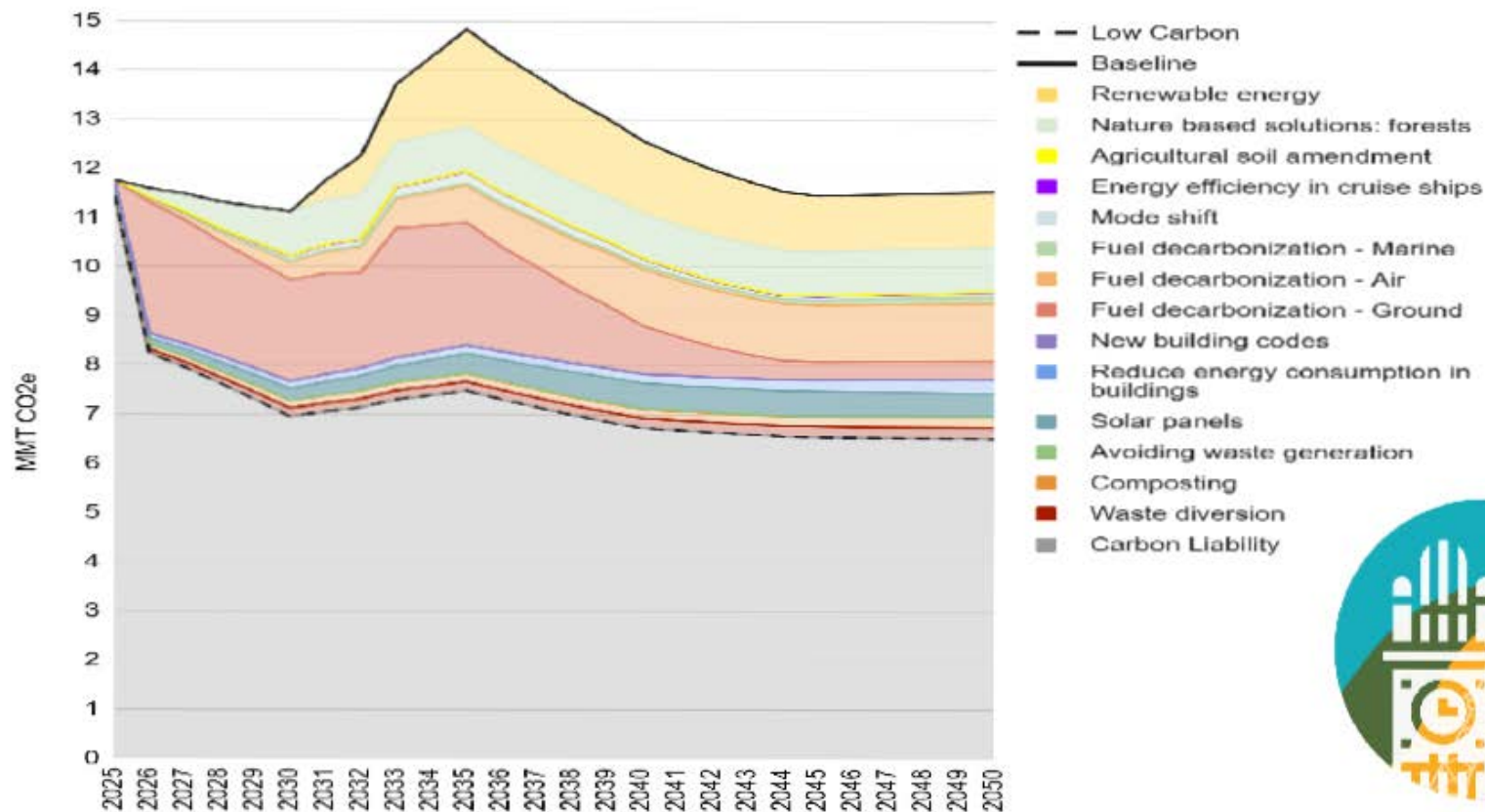
Jennifer VanderVeur Paulino



Grants Specialist

Email: [Jennifer.VanderVeur.contractor@hawaii.gov](mailto:Jennifer.VanderVeur.contractor@hawaii.gov)



## Combined Reduction in GHG from Measures in the CAP



## Hawai'i GHG Emissions for 1990, 2005, 2020, and 2022 and Projections by Sector (MMT CO<sub>2</sub> Eq.)

Note data from DOH, Hawai'i Greenhouse Gas Emissions Report for 2022

Sector	1990	2005	2020	2022	2025 Baseline	2030 Baseline	2035 Baseline	2040 Baseline	2045 Baseline
Energy	20.25	22.72	14.66	17.95	17.69	15.92	14.08	13.25	11.52
Industrial Processes and Product Use (IPPU)	0.18	0.50	0.76	0.85	0.80	0.66	0.44	0.28	0.26
AFOLU (Sources)	1.47	1.10	1.10	1.11	1.03	0.98	0.93	0.89	0.85
AFOLU (Sinks)	(2.40)	(2.50)	(2.43)	(2.48)	(2.44)	(2.41)	(2.44)	(2.52)	(2.60)
Waste	1.01	0.98	0.41	0.40	0.36	0.35	0.34	0.33	0.32
Total Emissions (Excluding Sinks)	22.90	25.29	16.93	20.32	19.89	17.91	15.79	14.74	12.95
Net Emissions (Including Sinks)	20.51	22.78	14.50	17.83	17.45	15.51	13.34	12.23	10.35
Aviation	5.11	7.16	3.17	5.67	6.10	6.24	6.32	6.38	6.40
Net Emissions (Including Sinks, Excluding Aviation)	15.40	15.62	11.33	12.16	11.35	9.26	7.02	5.85	3.94

<sup>[1]</sup> Inventory year 2022 is included as it is used as the starting point of emissions projections.

<sup>[2]</sup> Emissions from international bunker fuels are not included in the totals, as per IPCC (2006) guidelines.

<sup>[3]</sup> Domestic aviation and military emissions, which are reported under the Energy sector, are excluded from Hawai'i's GHG emission reduction goal established in Act 234 of 2007.

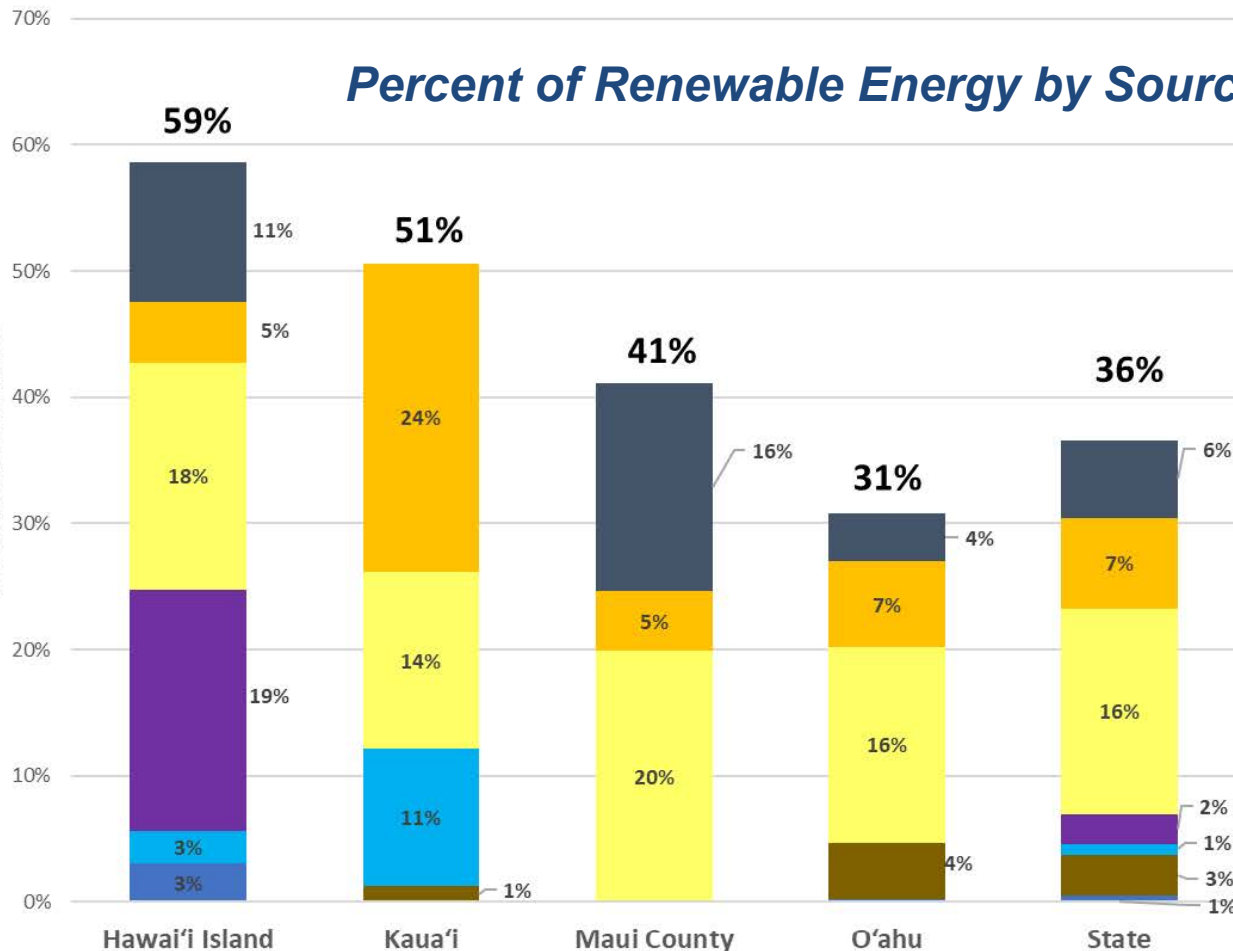
<sup>[4]</sup> Totals may not sum due to independent rounding. Parentheses indicate negative values or sequestration.



Sector	Key Measures & Description	Target/Reduction	Lead Agency/Implementer
<b>Energy</b>	Increase renewable energy generation (solar, wind, geothermal, biodiesel); grid modernization; power plant efficiency upgrades	20.6 MMT CO <sub>2</sub> e (2030-2045)	Hawaiian Electric, KIUC, Public Utilities Commission, State Energy Office
<b>Buildings</b>	Solar panels, building energy efficiency retrofits, new codes adoption	4.7 MMT CO <sub>2</sub> e (efficiency); 10 MMT (solar)	State Energy Office, HGIA, Counties
<b>Ground Transportation</b>	EV and fleet electrification, fuel decarbonization (ethanol blends), active transport, mode-shifting	35.6 MMT CO <sub>2</sub> e (fuels); 3 MMT (modes)	HDOT, Counties, Planning Departments
<b>Aviation</b>	Sustainable Aviation Fuel (SAF) blending, airfield electrification, operational efficiencies	20.6 MMT CO <sub>2</sub> e (SAF)	HDOT, Airlines, Airports
<b>Marine</b>	Clean fuels for ships, cruise efficiency	1.5 MMT CO <sub>2</sub> e (clean fuel), 0.2 (cruise eff.)	HDOT, Port Authorities
<b>AFOLU</b>	Nature-based solutions: tree planting (11M trees), watershed, wetlands, soil amendments	20.8 MMT CO <sub>2</sub> e (forests); 0.2 (soils)	DLNR, DOA, County Agencies
<b>Waste &amp; Materials</b>	Diversion, composting, reduction	4.7 MMT CO <sub>2</sub> e (diversion), 4.3 (composting)	DOH, County Solid Waste Departments
<b>Circular Economy &amp; Tourism</b>	Extended producer responsibility, Green Fee, sustainable tourism practices	-	State Legislature, HTA, Industry
<b>TOTAL</b>		<b>126.2 MMT CO<sub>2</sub>e (2030-2045)</b>	

## Percent of Renewable Energy by Source

Percent Net Generation



- Wind
- Utility-Scale PV
- Distributed PV
- Geothermal
- Hydroelectric
- Biomass
- Biofuels

*Renewable Portfolio Standards by Energy for 2024, Source PUC  
Docket 2007-0008, compiled by Hawai'i State Energy Office*

## ADEPT Committee

---

**From:** VanderVeur, Jennifer <Jennifer.VanderVeur.contractor@hawaii.gov>  
**Sent:** Monday, September 22, 2025 12:30 PM  
**To:** ADEPT Committee  
**Cc:** Axel I. Beers  
**Subject:** CCMAC presentation for Maui County Council ADEPT Committee meeting on October 9, 2025  
**Attachments:** Oct 2025 Presentation Maui County ADEPT.pdf

Aloha and good afternoon,

Axel Beers has asked me to present at the Oct 9<sup>th</sup> ADEPT committee meeting. Please find the attached presentation. I will be the only presenter, Jennifer VanderVeur Paulino, Grants Specialist. Please let me know if you have any questions.

Mahalo, and have a great day, Jen

*Jennifer VanderVeur Paulino*  
*Grants Specialist*  
Hawaii Climate Change Mitigation & Adaptation Commission  
808-583-0795  
<https://climate.hawaii.gov/>