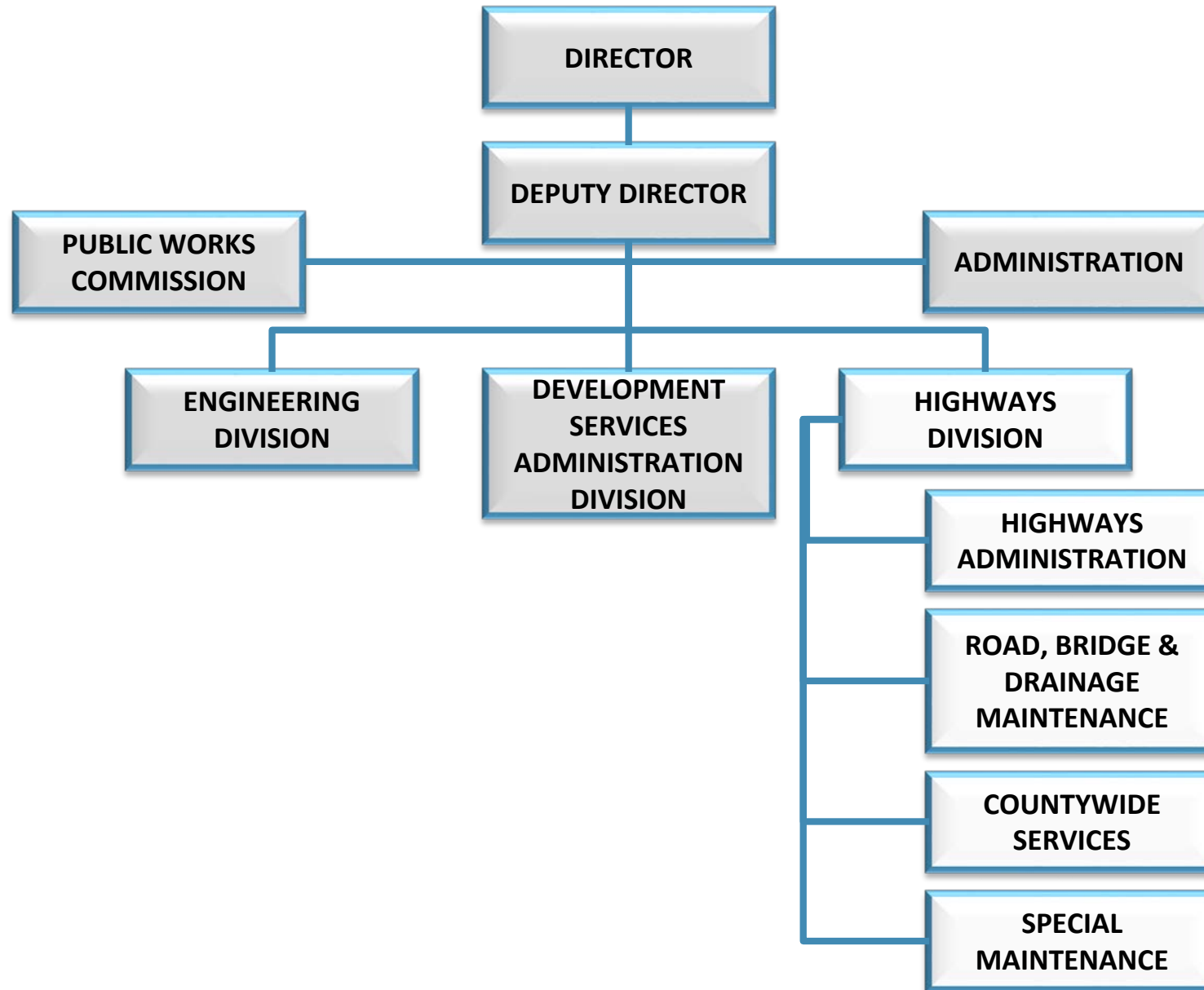


# **HIGHWAYS DIVISION BASEYARD MASTER PLANNING**



*DEPARTMENT OF PUBLIC WORKS  
HIGHWAYS DIVISION*

# PUBLIC WORKS ORGANIZATION



# MAIN AREAS OF RESPONSIBILITY

## Maintain and Repair ~1000 lane miles of County-owned Roadways

- ▶ Continues to grow with Development Roadway Dedications

## Current Operational Structure

### 200 Highways employees at 6 Separate Baseyards

- ▶ Wailuku/Central – Kahakuloa to Makena
- ▶ Lahaina – Olowalu to Kahakuloa
- ▶ Makawao – Ulupalukua to Twin Falls
- ▶ Hana – Nahiku to Kanaio
- ▶ Lanai – Entire island
- ▶ Molokai – Entire island
- ▶ Countywide Services (located at Wailuku Baseyard)
  - ▶ Pavement Preservation
  - ▶ Traffic Signals
  - ▶ Traffic Signs & Markings
  - ▶ Arborist





# HIGHWAYS DIVISION RESPONSIBILITIES

## ▶ Road Maintenance

- ▶ Vegetation Control
- ▶ Trees
- ▶ Pavement Repairs
- ▶ Crack Filling
- ▶ Sidewalk Repairs
- ▶ Street Sweeping
- ▶ Sink Holes
- ▶ Guardrails
- ▶ Traffic Signals
- ▶ Traffic Signs
- ▶ Traffic Markings
- ▶ Municipal Parking Lots



## ▶ Bridge & Drainage Maintenance

- ▶ Storm water Basins
- ▶ Culvert Inlet/Outlets
- ▶ Ocean Outfalls
- ▶ Regulated Dams & Flood Controls





# HIGHWAYS DIVISION RESPONSIBILITIES

## ▶ Pavement Preservation

- ▶ Minor Road Resurfacing
- ▶ Slurry/Microsurfacing



## ▶ Garage Services

- ▶ All Maintenance Services for Division and other County Departments

## ▶ Cemetery Maintenance



## ▶ Emergency & Storm Response

- ▶ Fallen Tree/Debris Removal
- ▶ Flood Response
- ▶ Wildfire Response
- ▶ Beach Clean-ups



## ▶ Compassionate Response

## ▶ Animal Carcass Removal

## ▶ Roads-in-limbo and Old Government Roads Maintenance

## ▶ Complaints and Other Special Projects





# BASEYARD MASTER PLAN OBJECTIVES

## ► Strategic Assessment

### ► Improve Customer Service

#### ► Potential Geographical Gaps

- South Maui currently served by Wailuku District
- Geographical limits of existing Districts re-alignment
  - Potential Alignment with Council Districts

### ► Improve Efficiencies and Regulatory Compliance

#### ► Physical Baseyard Locations and Facility Requirements

- All Maui island Baseyards are land-locked and at or near capacity
- Potential growth & upgrade requirements at all baseyard locations
  - Lanai – Facility repairs scheduled in 2022
  - Molokai – New Facility completed in 2020

WAILUKU



HANA



MAKAWAO



LAHAINA



MOLOKAI



LANAI

# BASEYARD MASTER PLAN GOALS

## ▶ Roadmap for future Facility CIP Projects

### ▶ Potential Outcomes to be determined

- ▶ Land acquisition, new baseyards, existing re-zoning of County owned properties with other Department collaboration
- ▶ Location currently shared with DEM Solid Waste in Wailuku, Hana and Makawao

### ▶ Maintain Regulatory Compliance

- ▶ Best management practices and needs assessment based upon MS4 Permit and SPCC\* Plan Wash rack facility improvements
  - ▶ Covered equipment storage and spill containment requirements
- ▶ Meet requirements of State and County initiatives such as population growth, electrification of the fleet, asset protection, and efficiency of operations.

## ▶ Long term proposal of CIP plan

- ▶ Allocation of funds to match 6 year CIP plan and beyond
- ▶ Meet needs of community, Division, Departments and County

\*MS4 (Municipal Separate Storm Sewer System) & SPCC (Spill Prevention Control & Countermeasure)