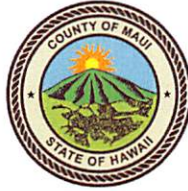


ALAN M. ARAKAWA  
Mayor



RECEIVED

2017 AUG 17 AM 10:03

DANILO F. AGSALOG  
Director

OFFICE OF THE

MARK R. WALKER  
Deputy Director

COUNTY OF MAUI  
**DEPARTMENT OF FINANCE**  
200 S. HIGH STREET  
WAILUKU, MAUI, HAWAII 96793

August 16, 2017

Honorable Alan Arakawa  
Mayor, County of Maui  
200 South High Street  
Wailuku, Hawaii 96793

APPROVED FOR TRANSMITTAL  
*Alan Arakawa* 8/17/17  
Mayor Date

For Transmittal to:

Honorable Michael White, Chair  
And Members of the Maui County Council  
200 South High Street  
Wailuku, Hawaii 96793

RECEIVED  
2017 AUG 21 AM 9:33  
OFFICE OF THE  
COUNTY CLERK

Dear Chair White and Maui County Council Members:

**SUBJECT: KEHALANI MODULE 14 SUBDIVISION  
SUBDIVISION FILE NO. 3.2317  
WATERLINE EASEMENT FOR LOTS 89, 90, 91 & 92  
TMK: (2) 3-5-001-110 POR (FILE PLAN PENDING)**

Pursuant to Section 3.44.015 H. of the Maui County Code, this letter shall serve as notice that the County of Maui has accepted the Waterline Easement by the Department of Water Supply – Engineering Division. The parcel is identified by the subject Tax Map Key Number.

Please refer to enclosed Exhibits A, B, C & D for the Legal Descriptions of the Easement Areas of the property and to Exhibit E for location of Easement Area.

In addition, the Department of Water Supply has provided additional information pursuant to Section 3.44.015, F.2 of the Maui County Code.

- 1) **County Funds:** No County Funds used.

COUNTY COMMUNICATION NO. 17-341

Waterline Easement  
TMK: (2) 3-5-001:110 por  
August 16, 2017  
Page 2

- 2) **Purpose**: Access to water meter and for waterline purposes, including other equipment and appurtenances necessary in connection with the construction of the Kehalani Module 14 Subdivision, SD Project No. 14-050.
- 3) **Conformance**: Easement location and width is acceptable to the Department of Water Supply and is in conformance with County standards.

Thank you for your attention in this matter. Should you have any questions, please feel free to contact me at Ext. 7475.

Sincerely,

  
DANILO F. AGSALOG  
Director of Finance

Enclosures

Cc: Dave Taylor, Director, Department of Water Supply

DFA/gmh

**Kehalani Module 14 Subdivision  
Description of Lot 89 (Ka 'Ikena Loop)  
(File Plan Pending)**

Land situated on the westerly side of Honoapiilani Highway (FAP No. 13-G) and on the southerly side of Kehalani Mauka Parkway, Wailuku, Maui, Hawaii

Being a portion of Royal Patent 1925, 1928, 1958, Land Commission Award 387, Part 5, Section 1 to American Board of Commissioners for Foreign Missions

Beginning at a point at the northwesterly corner of this parcel of land, the coordinates of said point of beginning referred to Government Survey Triangulation Station "LUKE" being 968.58 feet South and 5,739.54 feet West and running by azimuths measured clockwise from True South:

1. Thence along the southerly side of Kehalani Mauka Parkway, being also along the remainder of Royal Patent 1925, 1928, 1958, Land Commission Award 387, Part 5, Section 1 to American Board of Commissioners for Foreign Missions on a curve to the right, with the point of curvature azimuth from the radial point being: 85° 02' 48", and the point of tangency azimuth from the radial point being: 122° 45' 20", having a radius of 930.00 feet, the chord azimuth and distance being: 193° 54' 04" 601.09 feet to a point;

**EXHIBIT A**

2. Thence along Lot 79 of Kehalani Module 14 Subdivision (File Plan Pending), being also along the remainder of Royal Patent 1925, 1928, 1958, Land Commission Award 387, Part 5, Section 1 to American Board of Commissioners for Foreign Missions on a curve to the right, with the point of curvature azimuth from the radial point being: 122° 45' 20", and the point of tangency azimuth from the radial point being: 30° 56' 27", having a radius of 20.00 feet, the chord azimuth and distance being: 346° 50' 53.5" 28.73 feet to a point;
3. 300° 56' 27" 98.98 feet along Lots 79 and 90 (I'a Iki Street) of Kehalani Module 14 Subdivision (File Plan Pending), being also along the remainder of Royal Patent 1925, 1928, 1958, Land Commission Award 387, Part 5, Section 1 to American Board of Commissioners for Foreign Missions to a point;
4. Thence along the westerly side of Lots 90 (I'a Iki Street), 34 and 35 of Kehalani Module 14 Subdivision (File Plan Pending), being also along the remainder of Royal Patent 1925, 1928, 1958, Land Commission Award 387, Part 5, Section 1 to American Board of Commissioners for Foreign Missions on a curve to the right, having a radius of 225.00 feet, the chord azimuth and distance being: 317° 13' 06.5" 126.13 feet to a point;

5. 333' 29' 46" 215.73 feet along Lots 35 to 39, inclusive, of Kehalani Module 14 Subdivision (File Plan Pending), being also along the remainder of Royal Patent 1925, 1928, 1958, Land Commission Award 387, Part 5, Section 1 to American Board of Commissioners for Foreign Missions to a point;
6. Thence along Lots 39 and 40 of Kehalani Module 14 Subdivision (File Plan Pending), being also along the remainder of Royal Patent 1925, 1928, 1958, Land Commission Award 387, Part 5, Section 1 to American Board of Commissioners for Foreign Missions on a curve to the left, with the point of curvature azimuth from the radial point being: 63' 29' 46", and the point of tangency azimuth from the radial point being: 359' 24' 50", having a radius of 67.00 feet, the chord azimuth and distance being: 301' 27' 18" 71.09 feet to a point;
7. Thence along Lots 40, 41, 92 (Līlī Lehua Street), 59 and 60 of Kehalani Module 14 Subdivision (File Plan Pending), being also along the remainder of Royal Patent 1925, 1928, 1958, Land Commission Award 387, Part 5, Section 1 to American Board of Commissioners for Foreign Missions on a curve to the left, with the point of curvature azimuth from the radial point being: 359' 24' 50", and the point of tangency azimuth from the radial point being: 348' 01' 49", having a radius of 2,297.00 feet, the chord azimuth and distance being: 263' 43' 19.5" 455.62 feet to a point;

8. Thence along Lot 60 of Kehalani Module 14 Subdivision (File Plan Pending), being also along the remainder of Royal Patent 1925, 1928, 1958, Land Commission Award 387, Part 5, Section 1 to American Board of Commissioners for Foreign Missions on a curve to the left, with the point of curvature azimuth from the radial point being: 348° 01' 49", and the point of tangency azimuth from the radial point being: 238° 50', having a radius of 37.00 feet, the chord azimuth and distance being: 203° 25' 54.5" 60.32 feet to a point;
9. 148° 50' 68.58 feet along Lots 60 and 61 of Kehalani Module 14 Subdivision (File Plan Pending), being also along the remainder of Royal Patent 1925, 1928, 1958, Land Commission Award 387, Part 5, Section 1 to American Board of Commissioners for Foreign Missions to a point;
10. Thence along Lots 61 to 70, inclusive, 90 (I'a Iki Street) and 71 of Kehalani Module 14 Subdivision (File Plan Pending), being also along the remainder of Royal Patent 1925, 1928, 1958, Land Commission Award 387, Part 5, Section 1 to American Board of Commissioners for Foreign Missions on a curve to the right, having a radius of 2,025.00 feet, the chord azimuth and distance being: 157° 09' 45" 586.68 feet to a point;

11. 165' 29' 30" 59.73 feet along Lot 71 Kehalani Module 14 Subdivision (File Plan Pending), being also along the remainder of Royal Patent 1925, 1928, 1958, Land Commission Award 387, Part 5, Section 1 to American Board of Commissioners for Foreign Missions to a point;
12. Thence along Lot 71 of Kehalani Module 14 Subdivision (File Plan Pending), being also along the remainder of Royal Patent 1925, 1928, 1958, Land Commission Award 387, Part 5, Section 1 to American Board of Commissioners for Foreign Missions on a curve to the left, with the point of curvature azimuth from the radial point being: 255' 29' 30", and the point of tangency azimuth from the radial point being: 162' 37' 33", having a radius of 20.00 feet, the chord azimuth and distance being: 119' 03' 31.5" 28.98 feet to a point;
13. Thence along Lots 71 and 72 of Kehalani Module 14 Subdivision (File Plan Pending), being also along the remainder of Royal Patent 1925, 1928, 1958, Land Commission Award 387, Part 5, Section 1 to American Board of Commissioners for Foreign Missions on a curve to the left, with the point of curvature azimuth from the radial point being: 162' 37' 33", and the point of tangency azimuth from the radial point being: 155' 00', having a radius of 920.00 feet, the chord azimuth and distance being: 68' 48' 46.5" 122.36 feet to a point;

14. 65' 00' 50.00 feet along Lots 72 and 73 of Kehalani Module 14 Subdivision (File Plan Pending), being also along the remainder of Royal Patent 1925, 1928, 1958, Land Commission Award 387, Part 5, Section 1 to American Board of Commissioners for Foreign Missions to a point;
15. Thence along Lots 73 to 77, inclusive, of Kehalani Module 14 Subdivision (File Plan Pending), being also along the remainder of Royal Patent 1925, 1928, 1958, Land Commission Award 387, Part 5, Section 1 to American Board of Commissioners for Foreign Missions on a curve to the left, with the point of curvature azimuth from the radial point being: 155' 00', and the point of tangency azimuth from the radial point being: 132' 22' 48", having a radius of 800.00 feet, the chord azimuth and distance being: 53' 41' 24" 313.79 feet to a point;
16. Thence along the southerly side of Kehalani Mauka Parkway, being also along the remainder of Royal Patent 1925, 1928, 1958, Land Commission Award 387, Part 5, Section 1 to American Board of Commissioners for Foreign Missions on a curve to the right, with the point of curvature azimuth from the radial point being: 132' 22' 48", and the point of tangency azimuth from the radial point being: 168' 08' 13", having a radius of 930.00 feet, the chord azimuth and distance being: 240' 15' 30.5" 571.02 feet to a point;



17. Thence along Lot 1 of Kehalani Module 14 Subdivision (File Plan Pending), being also along the remainder of Royal Patent 1925, 1928, 1958, Land Commission Award 387, Part 5, Section 1 to American Board of Commissioners for Foreign Missions on a curve to the left, with the point of curvature azimuth from the radial point being: 168° 08' 13", and the point of tangency azimuth from the radial point being: 75° 29' 30", having a radius of 20.00 feet, the chord azimuth and distance being: 31° 48' 51.5" 28.93 feet to a point;
18. 345° 29' 30" 69.88 feet along Lots 1 and 2 of Kehalani Module 14 Subdivision (File Plan Pending), being also along the remainder of Royal Patent 1925, 1928, 1958, Land Commission Award 387, Part 5, Section 1 to American Board of Commissioners for Foreign Missions to a point;
19. Thence along Lots 2 to 13, inclusive, of Kehalani Module 14 Subdivision (File Plan Pending), being also along the remainder of Royal Patent 1925, 1928, 1958, Land Commission Award 387, Part 5, Section 1 to American Board of Commissioners for Foreign Missions on a curve to the left, having a radius of 1,978.00 feet, the chord azimuth and distance being: 337° 09' 45" 573.07 feet to a point;

20. 328' 50' 101.33 feet along Lots 13, 14 and 15 of Kehalani Module 14 Subdivision (File Plan Pending), being also along the remainder of Royal Patent 1925, 1928, 1958, Land Commission Award 387, Part 5, Section 1 to American Board of Commissioners for Foreign Missions to a point;
21. Thence along Lot 15 of Kehalani Module 14 Subdivision (File Plan Pending), being also along the remainder of Royal Patent 1925, 1928, 1958, Land Commission Award 387, Part 5, Section 1 to American Board of Commissioners for Foreign Missions on a curve to the left, with the point of curvature azimuth from the radial point being: 58' 50', and the point of tangency azimuth from the radial point being: 31' 34' 32", having a radius of 34.00 feet, the chord azimuth and distance being: 315' 12' 16" 16.02 feet to a point;
22. Thence along Lots 15 to 19, inclusive, of Kehalani Module 14 Subdivision (File Plan Pending), being also along the remainder of Royal Patent 1925, 1928, 1958, Land Commission Award 387, Part 5, Section 1 to American Board of Commissioners for Foreign Missions on a curve to the right, with the point of curvature azimuth from the radial point being: 211' 34' 32", and the point of tangency azimuth from the radial point being: 15' 38' 18", having a radius of 44.00 feet, the chord azimuth and distance being: 23' 36' 25" 87.15 feet to a point;

23. Thence along Lot 19 of Kehalani Module 14 Subdivision (File Plan Pending), being also along the remainder of Royal Patent 1925, 1928, 1958, Land Commission Award 387, Part 5, Section 1 to American Board of Commissioners for Foreign Missions on a curve to the left, with the point of curvature azimuth from the radial point being: 195° 38' 18", and the point of tangency azimuth from the radial point being: 167° 15' 05", having a radius of 34.00 feet, the chord azimuth and distance being: 91° 26' 41.5" 16.67 feet to a point;
24. Thence along Lots 19 to 27, inclusive, of Kehalani Module 14 Subdivision (File Plan Pending), being also along the remainder of Royal Patent 1925, 1928, 1958, Land Commission Award 387, Part 5, Section 1 to American Board of Commissioners for Foreign Missions on a curve to the right, with the point of curvature azimuth from the radial point being: 347° 15' 05", and the point of tangency azimuth from the radial point being: 359° 24' 50", having a radius of 2,344.00 feet, the chord azimuth and distance being: 83° 19' 57.5" 496.64 feet to a point;

25. Thence along Lot 27 to 30, inclusive, of Kehalani Module 14 Subdivision (File Plan Pending), being also along the remainder of Royal Patent 1925, 1928, 1958, Land Commission Award 387, Part 5, Section 1 to American Board of Commissioners for Foreign Missions on a curve to the right, with the point of curvature azimuth from the radial point being: 359° 24' 50", and the point of tangency azimuth from the radial point being: 63° 29' 46", having a radius of 114.00 feet, the chord azimuth and distance being: 121° 27' 18" 120.96 feet to a point;
26. 153° 29' 46" 215.73 feet along Lots 30 to 33, inclusive, of Kehalani Module 14 Subdivision (File Plan Pending), being also along the remainder of Royal Patent 1925, 1928, 1958, Land Commission Award 387, Part 5, Section 1 to American Board of Commissioners for Foreign Missions to a point;
27. Thence along Lots 33 and 91 (I'a Iki Place), of Kehalani Module 14 Subdivision (File Plan Pending), being also along the remainder of Royal Patent 1925, 1928, 1958, Land Commission Award 387, Part 5, Section 1 to American Board of Commissioners for Foreign Missions on a curve to the left, having a radius of 178.00 feet, the chord azimuth and distance being: 137° 13' 06.5" 99.78 feet to a point;

28. 120' 56' 27" 87.55 feet along Lots 91 (I'a Iki Place) and 80 of Kehalani Module 14 Subdivision (File Plan Pending), being also along the remainder of Royal Patent 1925, 1928, 1958, Land Commission Award 387, Part 5, Section 1 to American Board of Commissioners for Foreign Missions to a point;
29. Thence along Lot 80 of Kehalani Module 14 Subdivision (File Plan Pending), being also along the remainder of Royal Patent 1925, 1928, 1958, Land Commission Award 387, Part 5, Section 1 to American Board of Commissioners for Foreign Missions on a curve to the left, with the point of curvature azimuth from the radial point being: 210' 56' 27", and the point of tangency azimuth from the radial point being: 117' 14' 04", having a radius of 20.00 feet, the chord azimuth and distance being: 254' 05' 15.5" 29.18 feet to a point;
30. Thence along Lots 80 and 81 of Kehalani Module 14 Subdivision (File Plan Pending), being also along the remainder of Royal Patent 1925, 1928, 1958, Land Commission Award 387, Part 5, Section 1 to American Board of Commissioners for Foreign Missions on a curve to the left, with the point of curvature azimuth from the radial point being: 117' 14' 04", and the point of tangency azimuth from the radial point being: 107' 40', having a radius of 920.00 feet, the chord azimuth and distance being: 22' 27' 02" 153.45 feet to a point;

31. 17' 40' 50.00 feet along Lots 81 and 82 of Kehalani Module 14 Subdivision (File Plan Pending), being also along the remainder of Royal Patent 1925, 1928, 1958, Land Commission Award 387, Part 5, Section 1 to American Board of Commissioners for Foreign Missions to a point;
32. Thence along Lots 82 to 87, inclusive, of Kehalani Module 14 Subdivision (File Plan Pending), being also along the remainder of Royal Patent 1925, 1928, 1958, Land Commission Award 387, Part 5, Section 1 to American Board of Commissioners for Foreign Missions on a curve to the left, with the point of curvature azimuth from the radial point being: 107° 40', and the point of tangency azimuth from the radial point being: 85° 02' 48", having a radius of 800.00 feet, the chord azimuth and distance being: 6° 21' 24" 313.79 feet to the point of beginning and containing an Area of 97,787 Square Feet, more or less.



WARREN S. UNEMORI ENGINEERING, INC.

Wells Street Professional Center  
2145 Wells Street, Suite 403  
Wailuku, Maui, Hawaii 96793  
June 16, 2017

By: Reed M. Ariyoshi 4/30/18 Exp.  
Licensed Professional Land Surveyor  
Certificate No. 6597

**Kehalani Module 14 Subdivision  
Description of Lot 90 (I'a Iki Street)  
(File Plan Pending)**

Land situated on the westerly side of Honoapiilani Highway (FAP No. 13-G) and on the southerly side of Kehalani Mauka Parkway, Wailuku, Maui, Hawaii

Being a portion of Royal Patent 1925, 1928, 1958, Land Commission Award 387, Part 5, Section 1 to American Board of Commissioners for Foreign Missions

Beginning at a point at the northeasterly corner of this parcel of land, the coordinates of said point of beginning referred to Government Survey Triangulation Station "LUKE" being 88.66 feet South and 5,045.74 feet West and running by azimuths measured clockwise from True South:

1. Thence along Lot 89 (Ka 'Ikena Loop) of Kehalani Module 14 Subdivision (File Plan Pending), being also along the remainder of Royal Patent 1925, 1928, 1958, Land Commission Award 387, Part 5, Section 1 to American Board of Commissioners for Foreign Missions on a curve to the left, with the point of curvature azimuth from the radial point being: 75° 18' 05", and the point of tangency azimuth from the radial point being: 72° 56' 48", with a radius of 2,025.00 feet, the chord azimuth and distance being: 344° 07' 26.5" 83.22 feet to a point;

**EXHIBIT B**

2. Thence along Lot 70 of Kehalani Module 14 Subdivision (File Plan Pending), being also along the remainder of Royal Patent 1925, 1928, 1958, Land Commission Award 387, Part 5, Section 1 to American Board of Commissioners for Foreign Missions on a curve to the left, with the point of curvature azimuth from the radial point being: 252° 56' 48", and the point of tangency azimuth from the radial point being: 163° 43' 18", with a radius of 17.00 feet, the chord azimuth and distance being: 118° 20' 03" 23.88 feet to a point;
  
3. Thence along Lot 70 of Kehalani Module 14 Subdivision (File Plan Pending), being also along the remainder of Royal Patent 1925, 1928, 1958, Land Commission Award 387, Part 5, Section 1 to American Board of Commissioners for Foreign Missions on a curve to the left, with the point of curvature azimuth from the radial point being: 163° 43' 18", and the point of tangency azimuth from the radial point being: 155° 12' 19", with a radius of 475.00 feet, the chord azimuth and distance being: 69° 27' 48.5" 70.54 feet to a point;



4. Thence along Lots 70, 49, 92 (Lilī Lehua Street) and 48 of Kehalani Module 14 Subdivision (File Plan Pending), being also along the remainder of Royal Patent 1925, 1928, 1958, Land Commission Award 387, Part 5, Section 1 to American Board of Commissioners for Foreign Missions on a curve to the left, with the point of curvature azimuth from the radial point being: 155° 12' 19", and the point of tangency azimuth from the radial point being: 134° 49' 32", with a radius of 953.50 feet, the chord azimuth and distance being: 55° 00' 55.5" 337.37 feet to a point;
  
5. Thence along Lots 48 and 34 of Kehalani Module 14 Subdivision (File Plan Pending), being also along the remainder of Royal Patent 1925, 1928, 1958, Land Commission Award 387, Part 5, Section 1 to American Board of Commissioners for Foreign Missions on a curve to the left, with the point of curvature azimuth from the radial point being: 134° 49' 32", and the point of tangency azimuth from the radial point being: 120° 13' 16", with a radius of 500.00 feet, the chord azimuth and distance being: 37° 31' 24" 127.10 feet to a point;

6. Thence along Lot 34 of Kehalani Module 14 Subdivision (File Plan Pending), being also along the remainder of Royal Patent 1925, 1928, 1958, Land Commission Award 387, Part 5, Section 1 to American Board of Commissioners for Foreign Missions on a curve to the left, with the point of curvature azimuth from the radial point being: 120° 13' 16", and the point of tangency azimuth from the radial point being: 44° 41' 32", with a radius of 17.00 feet, the chord azimuth and distance being: 352° 27' 24" 20.82 feet to a point;
  
7. Thence along Lot 89 (Ka 'Ikena Loop) of Kehalani Module 14 Subdivision (File Plan Pending), being also along the remainder of Royal Patent 1925, 1928, 1958, Land Commission Award 387, Part 5, Section 1 to American Board of Commissioners for Foreign Missions on a curve to the left, with the point of curvature azimuth from the radial point being: 224° 41' 32", and the point of tangency azimuth from the radial point being: 210° 56' 27", with a radius of 225.00 feet, the chord azimuth and distance being: 127° 48' 59.5" 53.87 feet to a point;
  
8. 120° 56' 27" 26.50 feet along same to a point;

9. Thence along Lot 79 of Kehalani Module 14 Subdivision (File Plan Pending), being also along the remainder of Royal Patent 1925, 1928, 1958, Land Commission Award 387, Part 5, Section 1 to American Board of Commissioners for Foreign Missions on a curve to the left, with the point of curvature azimuth from the radial point being: 30° 56' 27", and the point of tangency azimuth from the radial point being: 301° 19' 55", with a radius of 20.00 feet, the chord azimuth and distance being: 256° 08' 11" 28.19 feet to a point;

10. Thence along Lot 79, 78 and 77 of Kehalani Module 14 Subdivision (File Plan Pending), being also along the remainder of Royal Patent 1925, 1928, 1958, Land Commission Award 387, Part 5, Section 1 to American Board of Commissioners for Foreign Missions on a curve to the right, with the point of curvature azimuth from the radial point being: 121° 19' 55", and the point of tangency azimuth from the radial point being: 134° 49' 32", with a radius of 547.00 feet, the chord azimuth and distance being: 218° 04' 43.5" 128.53 feet to a point;

11. Thence along Lots 77 to 72, inclusive, of Kehalani Module 14 Subdivision (File Plan Pending), being also along the remainder of Royal Patent 1925, 1928, 1958, Land Commission Award 387, Part 5, Section 1 to American Board of Commissioners for Foreign Missions on a curve to the left, with the point of curvature azimuth from the radial point being: 134° 49' 32", and the point of tangency azimuth from the radial point being: 155° 12' 19", with a radius of 1,000.50 feet, the chord azimuth and distance being: 235° 00' 55.5" 354.00 feet to a point;
12. Thence along Lots 72 and 71 of Kehalani Module 14 Subdivision (File Plan Pending), being also along the remainder of Royal Patent 1925, 1928, 1958, Land Commission Award 387, Part 5, Section 1 to American Board of Commissioners for Foreign Missions on a curve to the right, with the point of curvature azimuth from the radial point being: 155° 12' 19", and the point of tangency azimuth from the radial point being: 163° 28' 01", with a radius of 522.00 feet, the chord azimuth and distance being: 249° 20' 10" 75.20 feet to a point;

13. Thence along along of Lot 71 of Kehalani Module 14 Subdivision (File Plan Pending), being also along the remainder of Royal Patent 1925, 1928, 1958, Land Commission Award 387, Part 5, Section 1 to American Board of Commissioners for Foreign Missions on a curve to the left, with the point of curvature azimuth from the radial point being: 343° 28' 01", and the point of tangency azimuth from the radial point being: 255° 18' 05", with a radius of 20.00 feet, the chord azimuth and distance being: 209° 23' 03" 27.83 feet to the point of beginning and containing an Area of 27,644 Square Feet, more or less.



WARREN S. UNEMORI ENGINEERING, INC.

Wells Street Professional Center  
2145 Wells Street, Suite 403  
Wailuku, Maui, Hawaii 96793  
June 16, 2017

By: Reed M. Ariyoshi 4/30/18 Exp.  
Licensed Professional Land Surveyor  
Certificate No. 6597

V:\Projdata\14proj\14005\Survey\Deac-Lot 90.wpd

**Kehalani Module 14 Subdivision**  
**Description of Lot 91 (I'a Iki Place)**  
**(File Plan Pending)**

Land situated on the westerly side of Honoapiilani Highway (FAP No. 13-G) and on the southerly side of Kehalani Mauka Parkway, Wailuku, Maui, Hawaii

Being portions of Grant 483 to E. Bailey and Royal Patent 1925, 1928, 1958, Land Commission Award 387, Part 5, Section 1 to American Board of Commissioners for Foreign Missions

Beginning at a point at the northeasterly corner of this parcel of land, the coordinates of said point of beginning referred to Government Survey Triangulation Station "LUKE" being 490.89 feet South and 5,550.19 feet West and running by azimuths measured clockwise from True South:

1. 300° 56' 27"            26.02 feet along Lot 89 (Ka 'Ikena Loop) of Kehalani Module 14 Subdivision (File Plan Pending), being also along the remainder of Royal Patent 1925, 1928, 1958, Land Commission Award 387, Part 5, Section 1 to American Board of Commissioners for Foreign Missions to a point;
  
2. Thence along same on a curve to the right, with the point of curvature azimuth from the radial point being: 210° 56' 27", and the point of tangency azimuth from the radial point being: 234° 17' 08", having a radius of 178.00 feet, the chord azimuth and distance being: 312° 36' 47.5" 72.02 feet to a point;

3. Thence along Lot 33 of Kehalani Module 14 Subdivision (File Plan Pending), being also along the remainder of Royal Patent 1925, 1928, 1958, Land Commission Award 387, Part 5, Section 1 to American Board of Commissioners for Foreign Missions on a curve to the left, with the point of curvature azimuth from the radial point being: 234° 17' 08", and the point of tangency azimuth from the radial point being: 116° 58' 58", having a radius of 20.00 feet, the chord azimuth and distance being: 85° 38' 03" 34.16 feet to a point;
4. Thence along same on a curve to the left, with the point of curvature azimuth from the radial point being: 116° 58' 58", and the point of tangency azimuth from the radial point being: 96° 45' 32", having a radius of 250.00 feet, the chord azimuth and distance being: 16° 52' 15" 87.79 feet to a point;
5. Thence along same on a curve to the left, with the point of curvature azimuth from the radial point being: 96° 45' 32", and the point of tangency azimuth from the radial point being: 72° 10', having a radius of 150.00 feet, the chord azimuth and distance being: 354° 27' 46" 63.89 feet to a point;
6. 342° 10' 142.61 feet along Lots 33, 32, 31 and 30 of Kehalani Module 14 Subdivision (File Plan Pending), being also the remainder of Royal Patent 1925, 1928, 1958, Land Commission Award 387, Part 5, Section 1 to American Board of Commissioners for Foreign Missions to a point;

7. Thence along Lots 30 and 88 of Kehalani Module 14 Subdivision (File Plan Pending), being also along the remainder of Royal Patent 1925, 1928, 1958, Land Commission Award 387, Part 5, Section 1 to American Board of Commissioners for Foreign Missions on a curve to the right, with the point of curvature azimuth from the radial point being: 252° 10', and the point of tangency azimuth from the radial point being: 15° 20' 54", having a radius of 45.00 feet, the chord azimuth and distance being: 43° 45' 27" 79.16 feet to a point;
  
8. Thence along Lots 87, 86, 85 and 84 of Kehalani Module 14 Subdivision (File Plan Pending), being also along the remainder of Royal Patent 1925, 1928, 1958, Land Commission Award 387, Part 5, Section 1 to American Board of Commissioners for Foreign Missions on a curve to the right, with the point of curvature azimuth from the radial point being: 15° 20' 54", and the point of tangency azimuth from the radial point being: 129° 56' 08", having a radius of 45.00 feet, the chord azimuth and distance being: 162° 38' 31" 75.73 feet to a point;

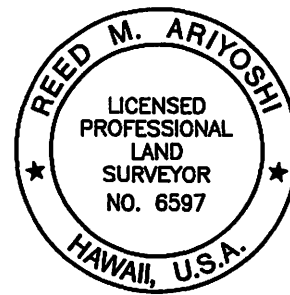


9. Thence along Lot 84 of Kehalani Module 14 Subdivision (File Plan Pending), being also along the remainder of Royal Patent 1925, 1928, 1958, Land Commission Award 387, Part 5, Section 1 to American Board of Commissioners for Foreign Missions on a curve to the left, with the point of curvature azimuth from the radial point being: 309° 56' 08", and the point of tangency azimuth from the radial point being: 252° 10', having a radius of 45.00 feet, the chord azimuth and distance being: 191° 03' 04" 43.47 feet to a point;
10. 162° 10' 66.48 feet along Lots 84, 83 and 82 of Kehalani Module 14 Subdivision (File Plan Pending), being also along the remainder of Royal Patent 1925, 1928, 1958, Land Commission Award 387, Part 5, Section 1 to American Board of Commissioners for Foreign Missions to a point;
11. Thence along Lots 82 and 81 of Kehalani Module 14 Subdivision (File Plan Pending), being also the remainder of Royal Patent 1925, 1928, 1958, Land Commission Award 387, Part 5, Section 1 to American Board of Commissioners for Foreign Missions on a curve to the right, with the point of curvature azimuth from the radial point being: 72° 10', and the point of tangency azimuth from the radial point being: 96° 45' 32", having a radius of 198.00 feet, the chord azimuth and distance being: 174° 27' 46" 84.33 feet to a point;

12. Thence along Lots 81 and 80 of Kehalani Module 14 Subdivision (File Plan Pending), being also the remainder of Royal Patent 1925, 1928, 1958, Land Commission Award 387, Part 5, Section 1 to American Board of Commissioners for Foreign Missions on a curve to the right, with the point of curvature azimuth from the radial point being: 96° 45' 32", and the point of tangency azimuth from the radial point being: 119° 00', having a radius of 298.00 feet, the chord azimuth and distance being: 197° 52' 46" 114.95 feet to a point;

13. 209° 00' 7.83 feet along Lot 80 of Kehalani Module 14 Subdivision (File Plan Pending), bthe remainder of Royal Patent 1925, 1928, 1958, Land Commission Award 387, Part 5, Section 1 to American Board of Commissioners for Foreign Missions to a point;

14. Thence along same on a curve to the left, with the point of curvature azimuth from the radial point being: 299° 00', and the point of tangency azimuth from the radial point being: 210° 56' 27", having a radius of 20.00 feet, the chord azimuth and distance being: 164° 58' 13.5" 27.80 feet to the point of beginning and containing an Area of 21,796 Square Feet, more or less.



WARREN S. UNEMORI ENGINEERING, INC.

Wells Street Professional Center  
2145 Wells Street, Suite 403  
Wailuku, Maui, Hawaii 96793  
June 16, 2017

By: Reed M. Ariyoshi 4/30/18 Exp.  
Licensed Professional Land Surveyor  
Certificate No. 6597

V:\Projdata\14proj\14005\Survey\Desc-Lot 91.wpd

**Kehalani Module 14 Subdivision**  
**Description of Lot 92 (Lili Lehua Street)**  
**(File Plan Pending)**

Land situated on the westerly side of Honoapiilani Highway (FAP No. 13-G) and on the southerly side of Kehalani Mauka Parkway, Wailuku, Maui, Hawaii

Being portions of Grant 483 to E. Bailey and Royal Patent 1925, 1928, 1958, Land Commission Award 387, Part 5, Section 1 to American Board of Commissioners for Foreign Missions

Beginning at a point at the southeasterly corner of this parcel of land, the coordinates of said point of beginning referred to Government Survey Triangulation Station "LUKE" being 769.54 feet South and 5,003.44 feet West and running by azimuths measured clockwise from True South:

1. Thence along Lot 89 (Ka 'Ikena Loop) of Kehalani Module 14 Subdivision (File Plan Pending), being also along the remainder of Royal Patent 1925, 1928, 1958, Land Commission Award 387, Part 5, Section 1 to American Board of Commissioners for Foreign Missions on a curve to the right, with the point of curvature azimuth from the radial point being: 352° 58' 08" and the point of tangency azimuth from the radial point being: 355° 04' 53", having a radius of 2,297.00 feet, the chord azimuth and distance being: 84° 01' 30.5" 84.69 feet to a point;

2. Thence along Lot 41 of Kehalani Module 14 Subdivision (File Plan Pending), being also along the remainder of Royal Patent 1925, 1928, 1958, Land Commission Award 387, Part 5, Section 1 to American Board of Commissioners for Foreign Missions on a curve to the left, with the point of curvature azimuth from the radial point being:  $355^{\circ} 04' 53''$  and the point of tangency azimuth from the radial point being:  $259^{\circ} 27' 02''$ , having a radius of 17.00 feet, the chord azimuth and distance being:  $217^{\circ} 15' 57.5''$  25.19 feet to a point;

3. Thence along Lot 41 of Kehalani Module 14 Subdivision (File Plan Pending), being also along the remainder of Royal Patent 1925, 1928, 1958, Land Commission Award 387, Part 5, Section 1 to American Board of Commissioners for Foreign Missions on a curve to the right, with the point of curvature azimuth from the radial point being:  $259^{\circ} 27' 02''$  and the point of tangency azimuth from the radial point being:  $243^{\circ} 29' 46''$ , having a radius of 175.00 feet, the chord azimuth and distance being:  $161^{\circ} 28' 24''$  48.57 feet to a point;

4. 153° 29' 46" 420.55 feet along the Lots 41 to 48, inclusive, of Kehalani Module 14 Subdivision (File Plan Pending), being also along the remainder of Royal Patent 1925, 1928, 1958, Land Commission Award 387, Part 5, Section 1 to American Board of Commissioners for Foreign Missions to a point;
5. Thence along Lot 48 of Kehalani Module 14 Subdivision (File Plan Pending), being also along the remainder of Royal Patent 1925, 1928, 1958, Land Commission Award 387, Part 5, Section 1 to American Board of Commissioners for Foreign Missions on a curve to the left, with the point of curvature azimuth from the radial point being: 243° 29' 46" and the point of tangency azimuth from the radial point being: 239° 36' 45", having a radius of 375.00 feet, the chord azimuth and distance being: 151° 33' 15.5" 25.41 feet to a point;

6. Thence along Lot 48 of Kehalani Module 14 Subdivision (File Plan Pending), being also along the remainder of Royal Patent 1925, 1928, 1958, Land Commission Award 387, Part 5, Section 1 to American Board of Commissioners for Foreign Missions on a curve to the left, with the point of curvature azimuth from the radial point being:  $239^{\circ} 36' 45''$  and the point of tangency azimuth from the radial point being:  $140^{\circ} 47' 01''$ , having a radius of 17.00 feet, the chord azimuth and distance being:  $100^{\circ} 11' 53''$  25.82 feet to a point;

7. Thence along Lot 90 (I'a Iki Street) of Kehalani Module 14 Subdivision (File Plan Pending), being also along the remainder of Royal Patent 1925, 1928, 1958, Land Commission Award 387, Part 5, Section 1 to American Board of Commissioners for Foreign Missions on a curve to the right, with the point of curvature azimuth from the radial point being:  $140^{\circ} 47' 01''$  and the point of tangency azimuth from the radial point being:  $145^{\circ} 56' 27''$ , having a radius of 953.50 feet, the chord azimuth and distance being:  $233^{\circ} 21' 44''$  85.80 feet to a point;

8. Thence along Lot 49 of Kehalani Module 14 Subdivision (File Plan Pending), being also along the remainder of Royal Patent 1925, 1928, 1958, Land Commission Award 387, Part 5, Section 1 to American Board of Commissioners for Foreign Missions on a curve to the left, with the point of curvature azimuth from the radial point being:  $145^{\circ} 56' 27''$  and the point of tangency azimuth from the radial point being:  $58^{\circ} 48' 41''$ , having a radius of 20.00 feet, the chord azimuth and distance being:  $12^{\circ} 22' 34''$  27.57 feet to a point;

9. Thence along Lot 49 of Kehalani Module 14 Subdivision (File Plan Pending), being also along the remainder of Royal Patent 1925, 1928, 1958, Land Commission Award 387, Part 5, Section 1 to American Board of Commissioners for Foreign Missions on a curve to the right, with the point of curvature azimuth from the radial point being:  $238^{\circ} 48' 41''$  and the point of tangency azimuth from the radial point being:  $243^{\circ} 29' 46''$ , having a radius of 422.00 feet, the chord azimuth and distance being:  $331^{\circ} 09' 13.5''$  34.49 feet to a point;



10. 333° 29' 46" 420.55 feet along the Lots 49 - 58, inclusive, of Kehalani Module 14 Subdivision (File Plan Pending), being also along the remainder of Royal Patent 1925, 1928, 1958, Land Commission Award 387, Part 5, Section 1 to American Board of Commissioners for Foreign Missions to a point;

11. Thence along Lots 58 and 59 of Kehalani Module 14 Subdivision (File Plan Pending), being also along the remainder of Royal Patent 1925, 1928, 1958, Land Commission Award 387, Part 5, Section 1 to American Board of Commissioners for Foreign Missions on a curve to the right, with the point of curvature azimuth from the radial point being: 243° 29' 46" and the point of tangency azimuth from the radial point being: 260° 19' 44", having a radius of 222.00 feet, the chord azimuth and distance being: 341° 54' 45" 64.99 feet to a point;

12. Thence along Lot 59 of Kehalani Module 14 Subdivision (File Plan Pending), being also along the remainder of Royal Patent 1925, 1928, 1958, Land Commission Award 387, Part 5, Section 1 to American Board of Commissioners for Foreign Missions on a curve to the left, with the point of curvature azimuth from the radial point being: 80° 19' 44" and the point of tangency azimuth from the radial point being: 352° 58' 08", having a radius of 20.00 feet, the chord azimuth and distance being: 306° 38' 56" 27.63 feet to the point of beginning and containing an Area of 25,966 Square Feet, more or less.



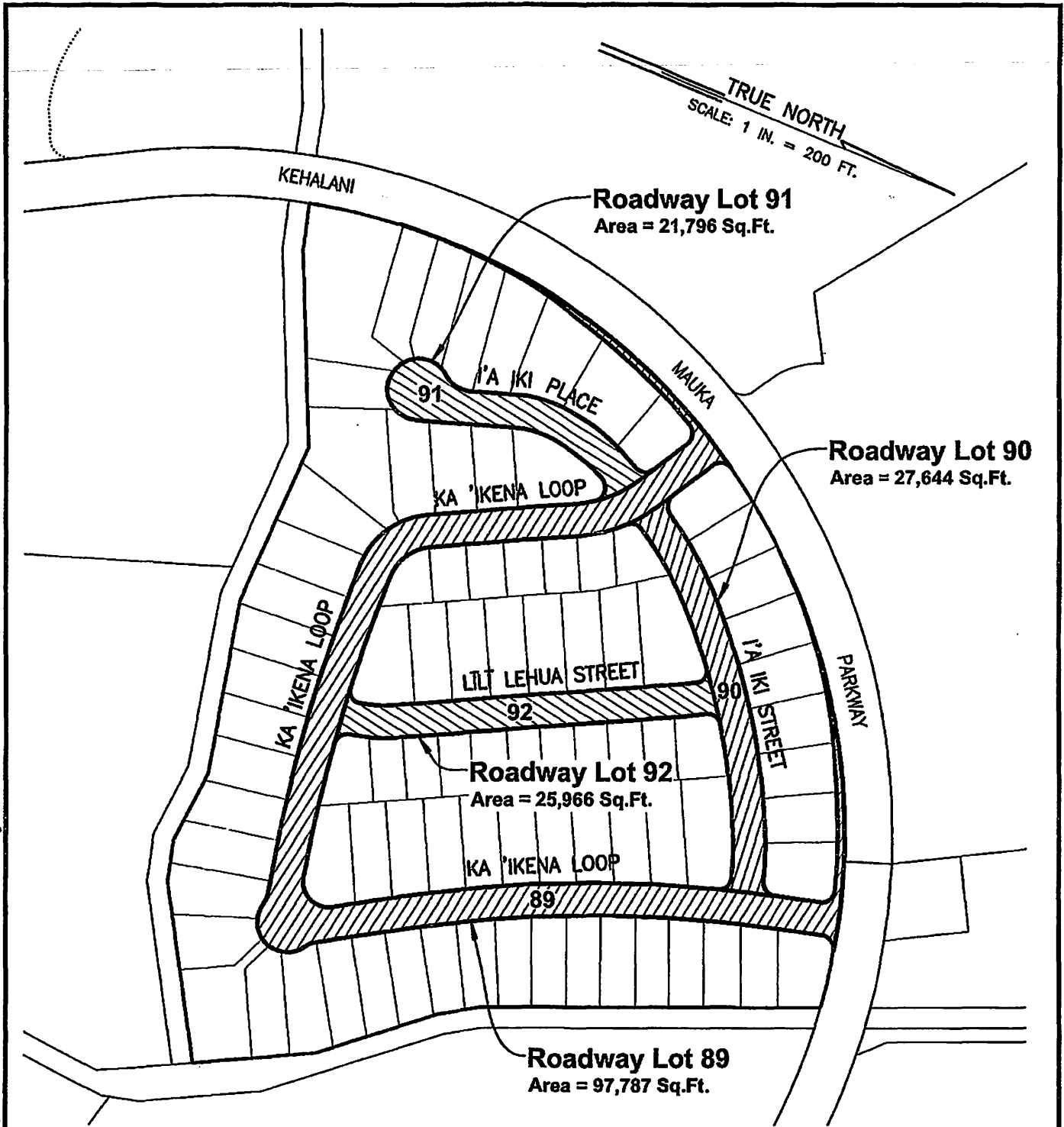
WARREN S. UNEMORI ENGINEERING, INC.

Wells Street Professional Center  
2145 Wells Street, Suite 403  
Wailuku, Maui, Hawaii 96793  
June 16, 2017

By: Reed M. Ariyoshi 4/30/18 Exp.  
Licensed Professional Land Surveyor  
Certificate No. 6597

V:\Projdata\14proj\14005\Survey\Desc-Lot 92.wpd

V:\Projdata\14proj\14005\dwg\exhibits\EXB-ROADWAY-LOT-MAP-DWS-00.dwg



**KEHALANI MODULE 14 SUBDIVISION  
ROADWAY LOTS 89 TO 92  
DSA Subdiv. File No. 3.2317**

**DWS SD No. 14-050**

**T.M.K.: (2) 3-5-001: 110**

**Wailuku, Maui, Hawaii**

EXHIBIT "E"



June 16, 2017