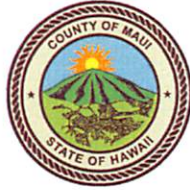


ALAN M. ARAKAWA
Mayor



RECEIVED
2017 SEP 21 PM 1:09
DANILO F. AGSALOG
Director
MARK R. WALKER
Deputy Director
OFFICE OF THE MAJOR

COUNTY OF MAUI
DEPARTMENT OF FINANCE
200 S. HIGH STREET
WAILUKU, MAUI, HAWAII 96793

September 21, 2017

RECEIVED
2017 SEP 22 PM 2:32
OFFICE OF THE
COUNTY CLERK

Honorable Alan Arakawa
Mayor, County of Maui
200 South High Street
Wailuku, Hawaii 96793

For Transmittal to:

Honorable Michael White, Chair
And Members of the Maui County Council
200 South High Street
Wailuku, Hawaii 96793

APPROVED FOR TRANSMITTAL

Mayor 9/21/17
Date

Dear Chair White and Maui County Council Members:

**SUBJECT: KUALONO SUBDIVISION
WATERLINE EASEMENTS W-2, W-3, W-4 & W-5
SUBDIVISION FILE NO. 2.2896
TMK: (2) 2-3-011:124, 125, 126, 127, 128, 129, & 130**

Pursuant to Section 3.44.015 H. of the Maui County Code, this letter shall serve as notice that the County of Maui has accepted the Waterline Easement by the Department of Water Supply – Engineering Division. The parcel is identified by the subject Tax Map Key Numbers.

Please refer to enclosed Exhibit A for the Legal Description of the Easement Areas and to Exhibit B for location of Easement Areas.

In addition, the Department of Water Supply has provided additional information pursuant to Section 3.44.015, F.2 of the Maui County Code.

- 1) County Funds: No County Funds used.

COUNTY COMMUNICATION NO. 17-383

Waterline Easements W-2 thru W-5

TMK: (2) 2-3-011:124 through 130

September 21, 2017

Page 2

- 2) **Purpose**: Access to water meters and for waterline purposes, including other equipment and appurtenances necessary or expedient for the proper maintenance, operation or repair of such water meter(s) or pipelines installed within said easement in connection with the construction of the KUALONO SUBDIVISION, SD Project No. 05-038.

- 3) **Conformance**: Easement location and width is acceptable to the Department of Water Supply and is in conformance with County standards.

Thank you for your attention in this matter. Should you have any questions, please feel free to contact me at Ext. 7475.

Sincerely,



for DANILO F. AGSALOG
Director of Finance

Enclosures

Cc: Dave Taylor, Director, Department of Water Supply

DFA/gmh

EXHIBIT A

Kualono Subdivision Description of Easements W-2, W-3, W-4 and W-5

Easement W-2 for waterline purposes as shown on File Plan Number 2488, filed in the Bureau of Conveyances of the State of Hawaii (the "Bureau"), being all of LOT 51 of the "KUALONO SUBDIVISION", as shown on File Plan Number 2488, filed in the Bureau, and containing approximately 77,887 square feet.

Easement W-3 for waterline purposes as shown on File Plan Number 2488, filed in the Bureau, being all of LOTS 52, 53, 54 and 55 of the "KUALONO SUBDIVISION", as shown on File Plan Number 2488, filed in the Bureau, and containing approximately 82,581 square feet.

Easement W-4 for waterline purposes as shown on File Plan Number 2488, filed in the Bureau, being all of LOT 56 of the "KUALONO SUBDIVISION", as shown on File Plan Number 2488, filed in the Bureau, and containing approximately 3,810 square feet.

Easement W-5 for waterline purposes as shown on File Plan Number 2488, filed in the Bureau, being all of LOT 57 of the "KUALONO SUBDIVISION", as shown on File Plan Number 2488, filed in the Bureau, and containing approximately 1,871 square feet.

V:\Projdata\04PROJ\04004.10 Kualono (Rev Set)\dwg2004\exhibit\exb-easements-00.dwg

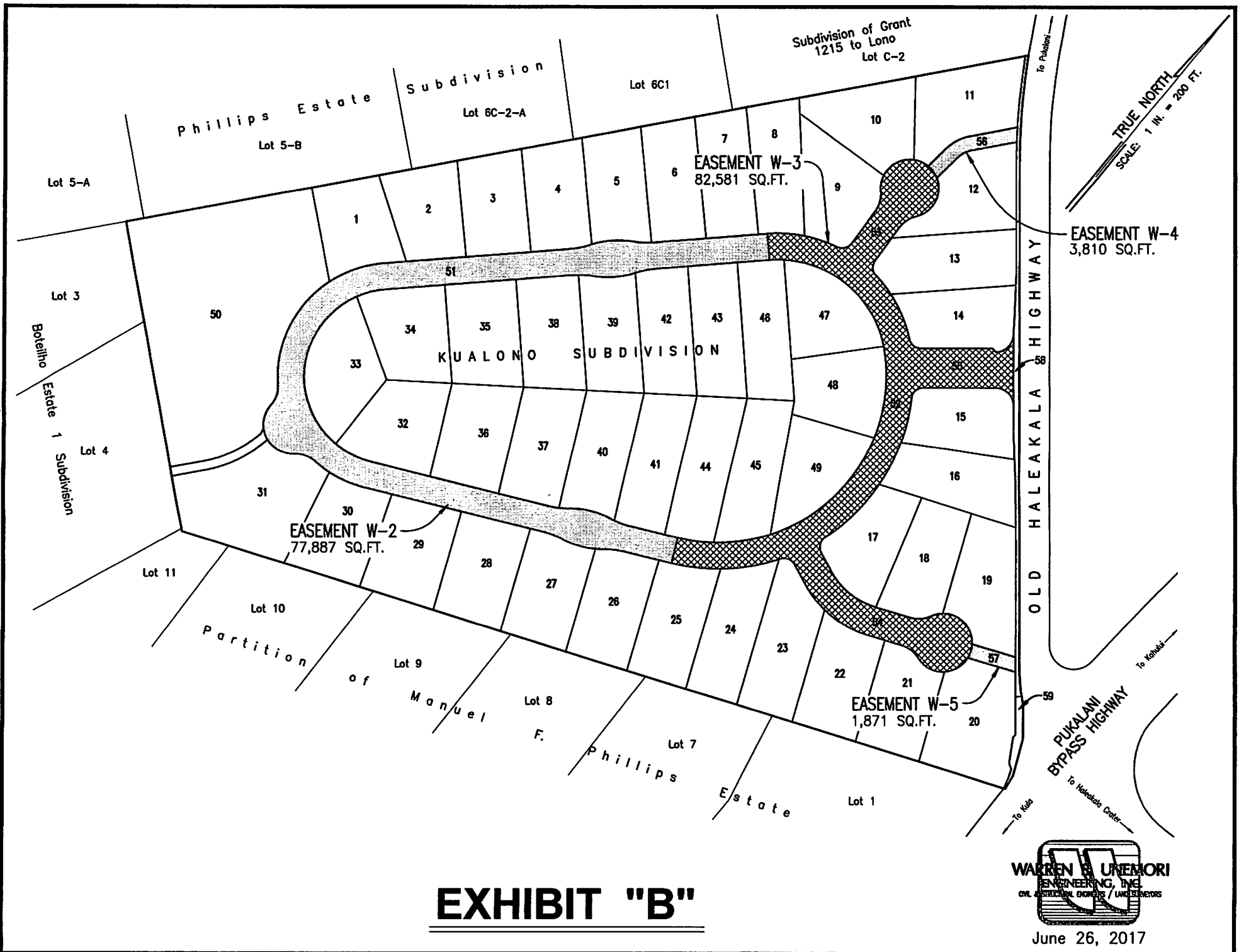


EXHIBIT "B"



June 26, 2017