

COUNTY OF MAUI
DEPT. OF ENVIRONMENTAL MANAGEMENT

FY25-FY26 CIP PROJECT UPDATES



Water and Infrastructure Committee

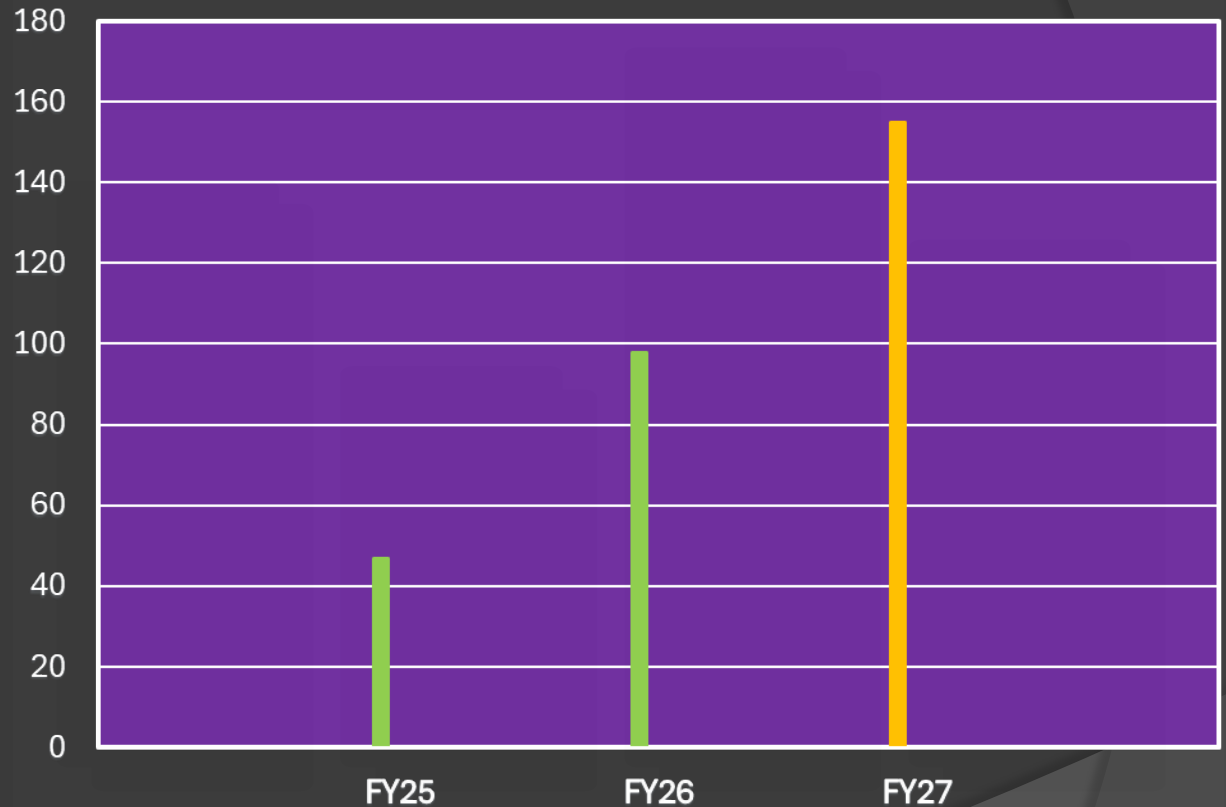
March 9, 2026

DEM Total Proposed CIP Budget by FY

FY2025 = \$46.9 M

FY2026 = \$98.0 M

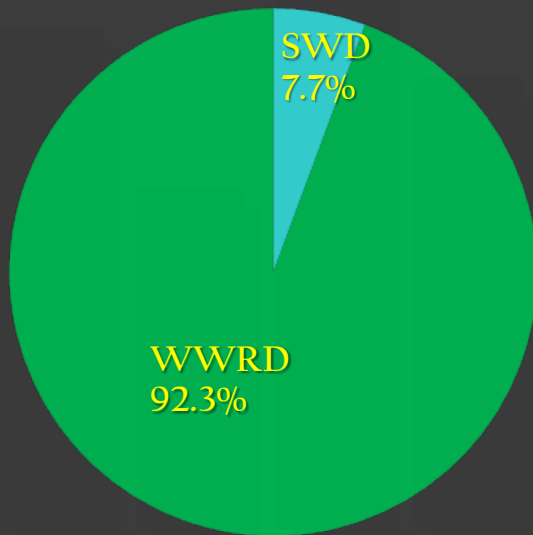
FY2027 = \$155.0 M



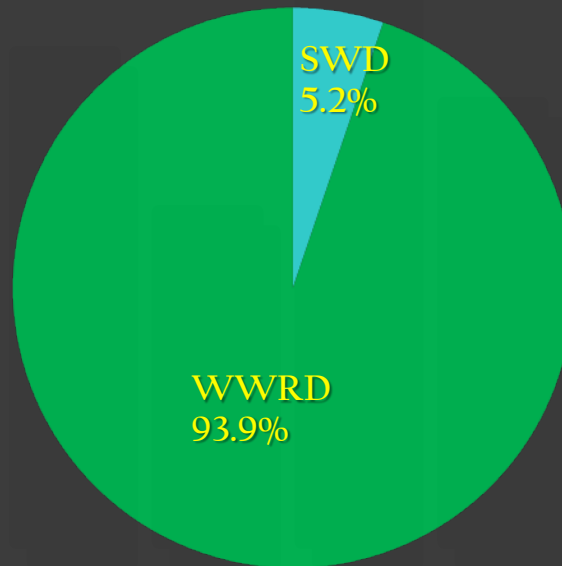
FY27 budget amount is anticipated and may change due to various reasons.

FY25-FY27 CIP Budget by Division

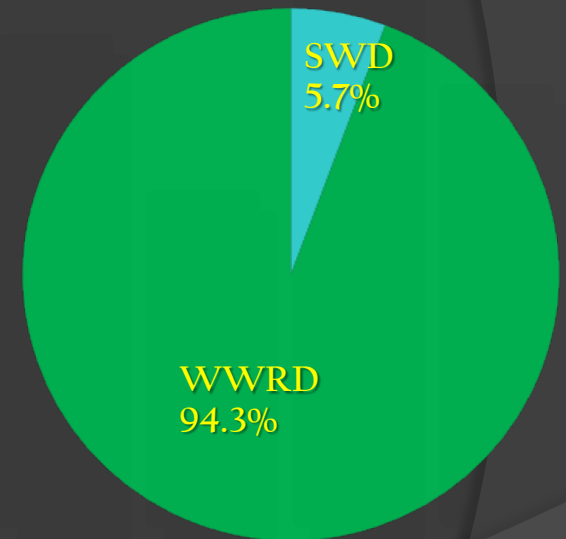
FY25



FY26



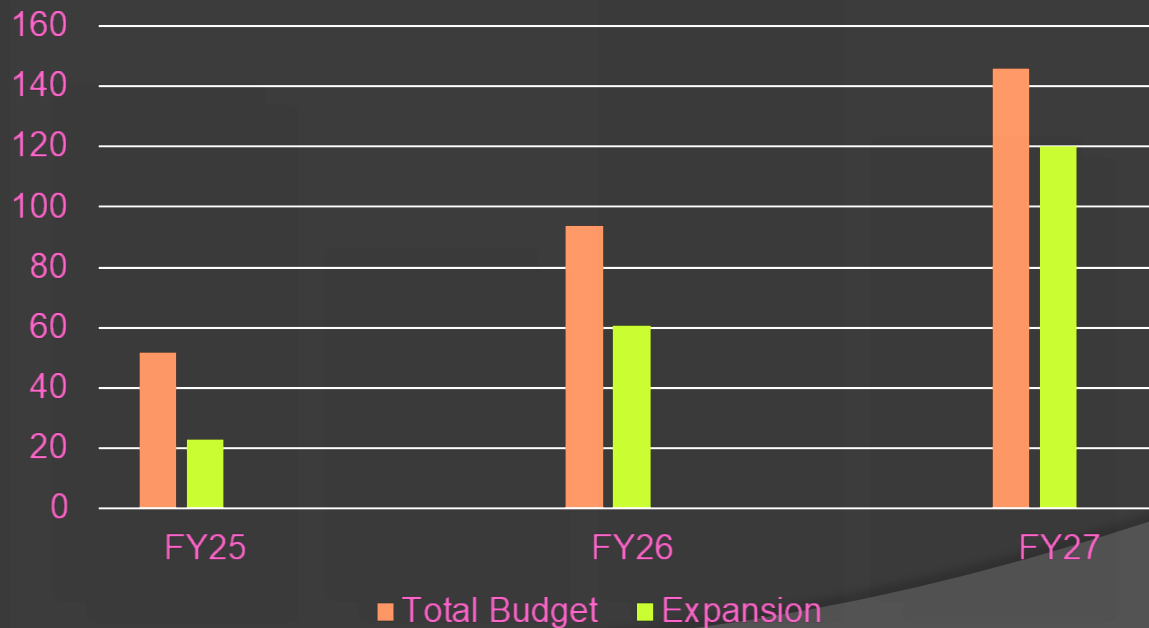
FY27



WWRD FY25-FY27 CIP Projects

- ⦿ Approx. 30.3% of total CIP budget are regulatory or maintenance related projects
- ⦿ Approx. 69.7% of total CIP budget are expansion or new infrastructure related projects

WWRD Expansion Projects by FY



WWRD FY25 CIP PROJECT UPDATES

FY 2025 (WWRD)

- W-K WWRF Solids Building Piping Rehab – Design 100%, Anticipated bid opening in April 2026
- WWRF Roofing Rehab Projects – Design 100%, Anticipated bid opening in July 2026
- Honokawai R-1 Water Dist. Syst - Design 5%, Evaluation of R-1 demand needs and potential users
- Kaunakakai Effluent FM Replacement – Design 5% Evaluation of existing data and design alternatives for rehabilitation and/or replacement.
- Kihei 3 PS Modifications – Design 5%, Project background research and data gathering.
- Kihei 8 PS Modifications – Design 5%, Project background research and data gathering.
- Kihei North Mauka System/Lipoa Pump Station – Const. 0%, Contract awarded. Construction begins mid-2026
- Kihei WWRF UV System Upgrade – Design 5%, Evaluation of existing data and design alternatives.
- Kaanapali Resort R-1 Dist. System- Const. 80%. On schedule to finish by end mandated deadline.

WWRD FY25 CIP PROJECT UPDATES

FY 2025 (WWRD)

- Lahaina 5 and 6 PS Renov. – Design 5%, Evaluation of alternatives and cost analysis.
- Lahaina WWRF RAS/Dewatering Upgrades – Const. 0%, Preconstruction meeting April 30. Construction begins mid-2026
- Napili 1 FM Rep – Const 0%, Construction contract awarded. Construction begins mid-2026
- Napili 1 PS Renov. - Const 0%, Construction contract awarded. Construction begins mid-2026
- Paia PS Renov. – Design 40%. Preparing for 50% Review workshop.
- Maui R-1 Dist. Expansion Wailea Makena - PER 5% Evaluation of R-1 demand needs and potential users.
- West Maui Recycled Water Syst Exp FM from El 300' to El 700' – Design 5%, Evaluation of R-1 demand needs and potential users.
- Kahului Beach Road Sewer Upgrade – Const 5%, Mobilization and staging.
- WK WWRF Process Improvements – Const 10%, Structural concrete repairs and gate modifications.

WWRD FY26 CIP PROJECT UPDATES

FY 2026 (WWRD)

- Central Maui WWRF - Design - 60%, EIS published, design to be completed this year, land entitlements by July 2027.
- Kaiola Place Sewer Expansion – Cons. 0%, Anticipated bid opening in August 2026, pending final approval of SMA.
- Kihei 4 PS Modif – Const. 0%, Anticipated bid opening in September 2026.
- Kihei 5 PS Modif and FM Rep - Const. 0%, Anticipated bid opening in September 2026.
- Kihei 6 FM Rep. Const 0%, Anticipated bid date July 2026.
- Kihei 6 PS Modif. – Design 0%, Project background research and data gathering.
- Kihei 7 PS Relocation, Design 40%. Anticipated bid opening in September 2026
- Kihei South Capacity Sewer Upgrades – PER 5%, Initial meeting, background research.
- Napili 1 FM Rep – Const 0%, NTP Issued. Long lead items. Construction starts July 1st.
- Napili 1 PS Renov – Const 0%. Longe lead items. Awaiting resolution of ROE with HHFDC.

WWRD FY26 CIP PROJECT UPDATES

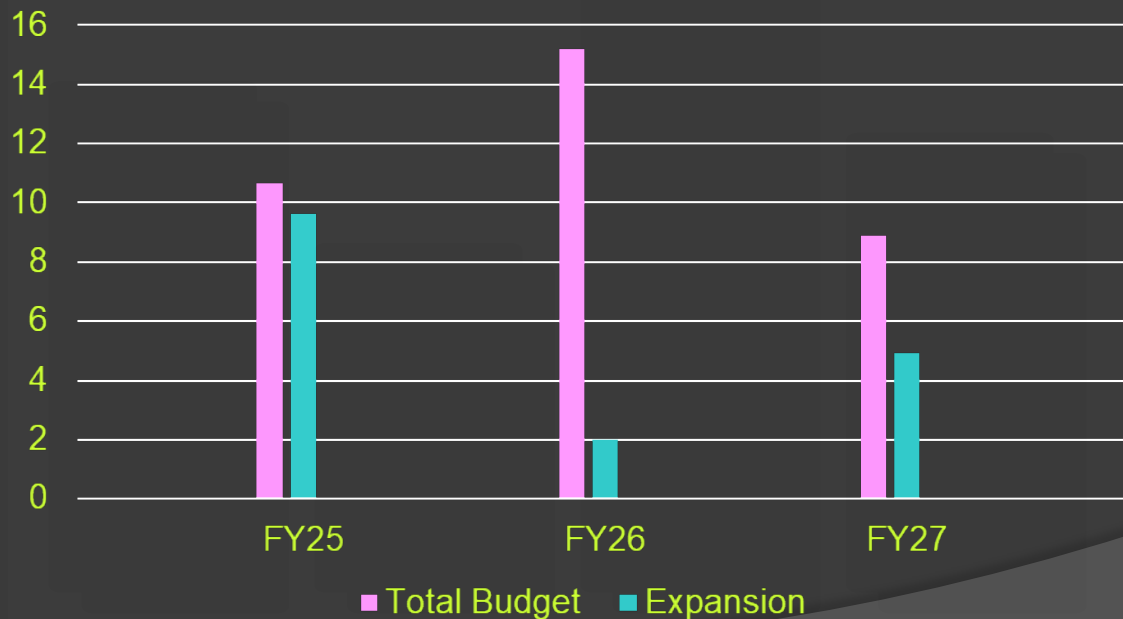
FY 2026 (WWRD)

- Napili 2 FM Rep – Design 75%, Anticipated bid in August 2026
- Napili 2 PS Renov – Design 100%. Anticipated bid opening in May 2026, pending SMA approval.
- Waiehu Kou PS Modif – Design 100%. Anticipated bid opening in May 2026, pending SHPD approval
- Waikapu-Wailuku Diversion System Gravity Sewer and FM – Design 26%, EIS published, Anticipated bid in July 2027
- Waikapu-Wailuku Diversion System Kehalani PS – Design 44%, EIS published, Anticipated bid in July 2027
- Waiko Road Sewer Expansion – Design 50%, EA published. Anticipated bid in July 2026.
- Waiko Road Sewer Expansion (Upper) – Design 50%, EA published. Anticipated bid in July 2026.
- Wailuku-Kahului WWRF Shoreline Erosion Protection – Design 0%, Schedule Scoping Meeting and Request Proposal
- West Maui Recycled Water Syst Exp, Const. 70%, Construction of new effluent PS and force main to El 300’.
- West Maui Recycled Water Syst Exp Lahaina Siphon and Ditch Distribution – Design 0%, Background research for potential R-1 water use

SWD FY25-FY27 CIP Projects

- Approx. 52.3% of total CIP budget are regulatory or maintenance related projects
- Approx. 47.7% of total CIP budget are expansion or new infrastructure related projects

SWD Expansion Projects by FY



SWD FY25 CIP PROJECT UPDATES

FY 2025 (SWD)

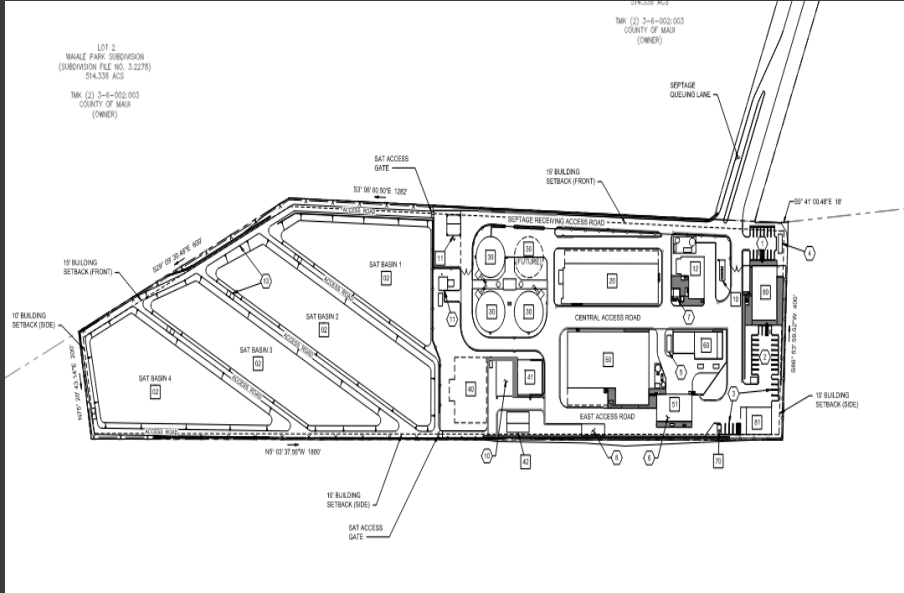
- Integrated SWMP Update – 100% Completed
- Molokai Landfill Scalehouse Replacement – Lack of Resources Deferred to FY27
- CML Comprehensive EIS – Consultant Selected (MH) 10% Completed
- CML LFG System Expansion – Currently out to bid for Construction
- Beneficial Use of LFG – Evaluating Options (RFP vs. Amend Current Contract)
- Prefab Building w/ Solar Power at CML – Contract Being Executed (Betsill Bros.)
- CML Gas Collection System Reliability (Flare) – Const. 85% Complete

SWD FY26 CIP PROJECT UPDATES

FY 2026 (SWD)

- CML Phase II/III Interface (Disposal Area) Development – Design 100% Complete; Est. Bid Date June 2026.
- CML LFG System Expansion – Design 100% Complete; Est. Bid Date Feb 2026
- CML Supplement to Primary Litter Screen – Design 50% Complete; Est. Bid Date Late 2026
- Solid Waste Master Plans for County Landfills and Solid Waste Facilities – Design Consultant Selected (HDR); Proposal Pending; NTP April 2026.
- CML Infrastructure – Design 100% Complete; Const. Contract Awarded (Betsill Bros); NTP (12/30/25)

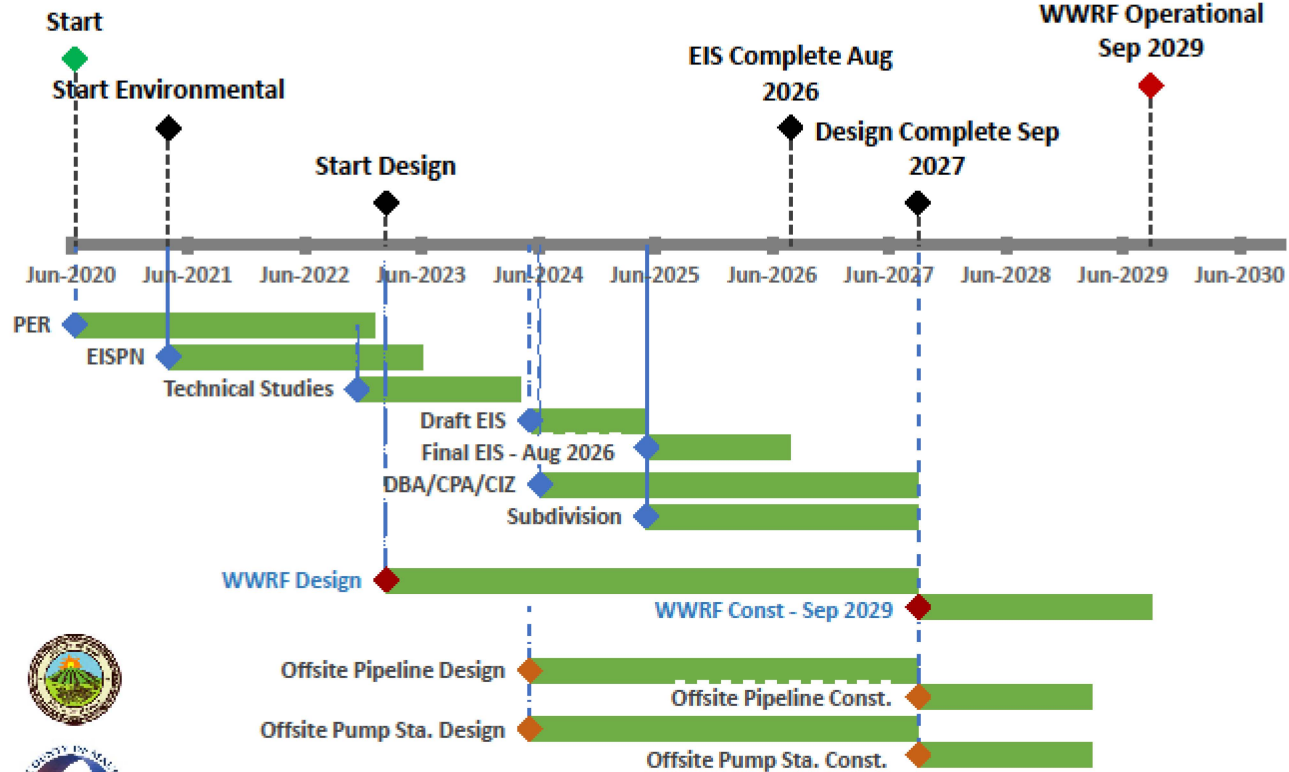
CENTRAL MAUI WWRF TIMELINE



Date	Milestone
2020	Facility Plan
2021	Begin EIS Process, Technical Studies
2022	Finish Facility Plan, Basis of Design Report
2023	Begin Design, Preliminary Estimates
2024	30% Design
2025	60% Design
2026	90% Design, Issue Final EIS, DBA, CPA, CIZ
2027	100% Design, Bid Project
2028	Construction
2029	Construction
2030	Testing and Commissioning; Plant Fully Operational

Questions???

Central Maui WWRF Timeline



KIHEI RECYCLED WATER SYSTEM EXISTING

LEGEND

Recycled Water Users Kihei WWRP

Customer Status

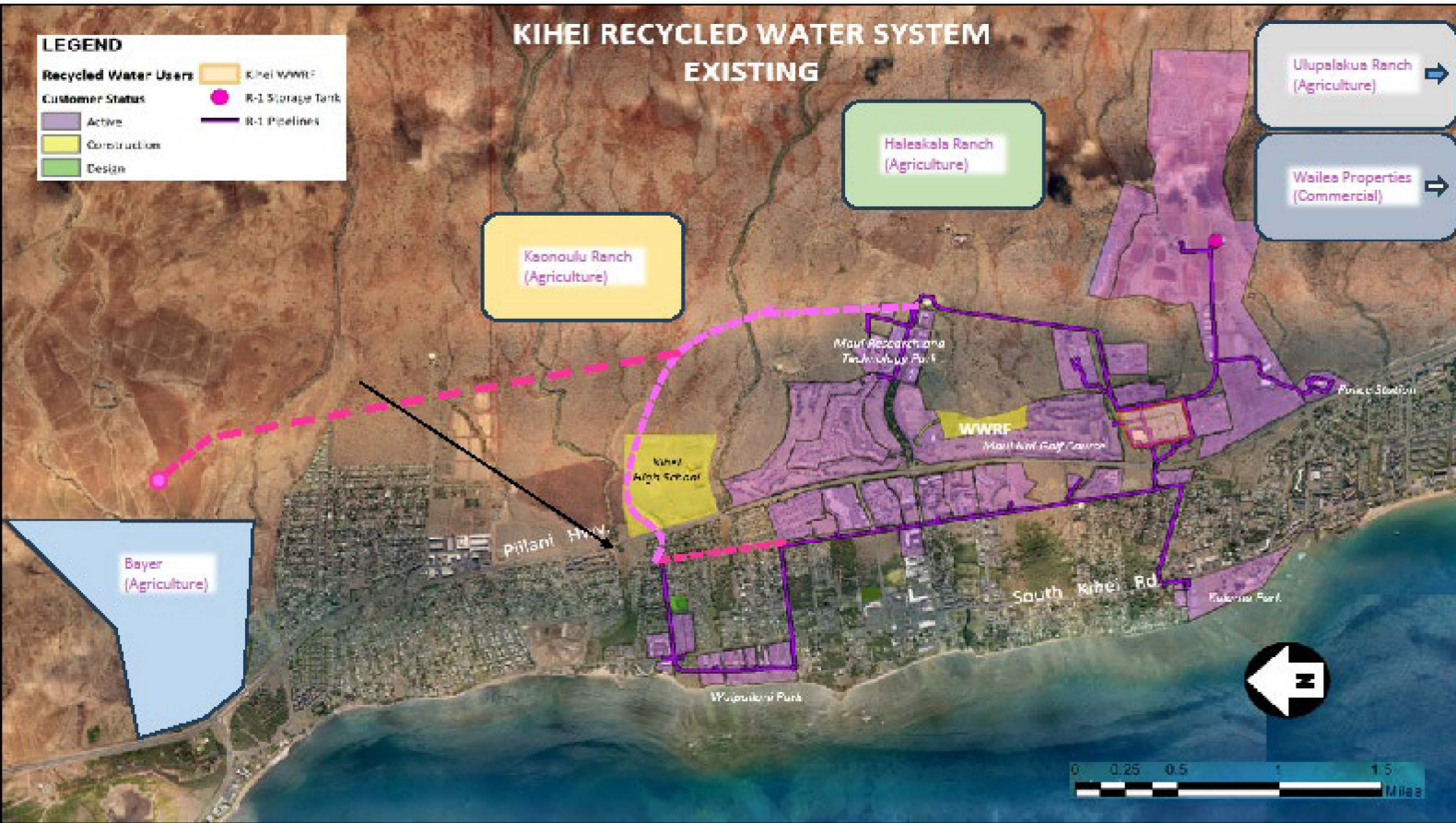
- Active
- Construction
- Design

R-1 Storage Tank

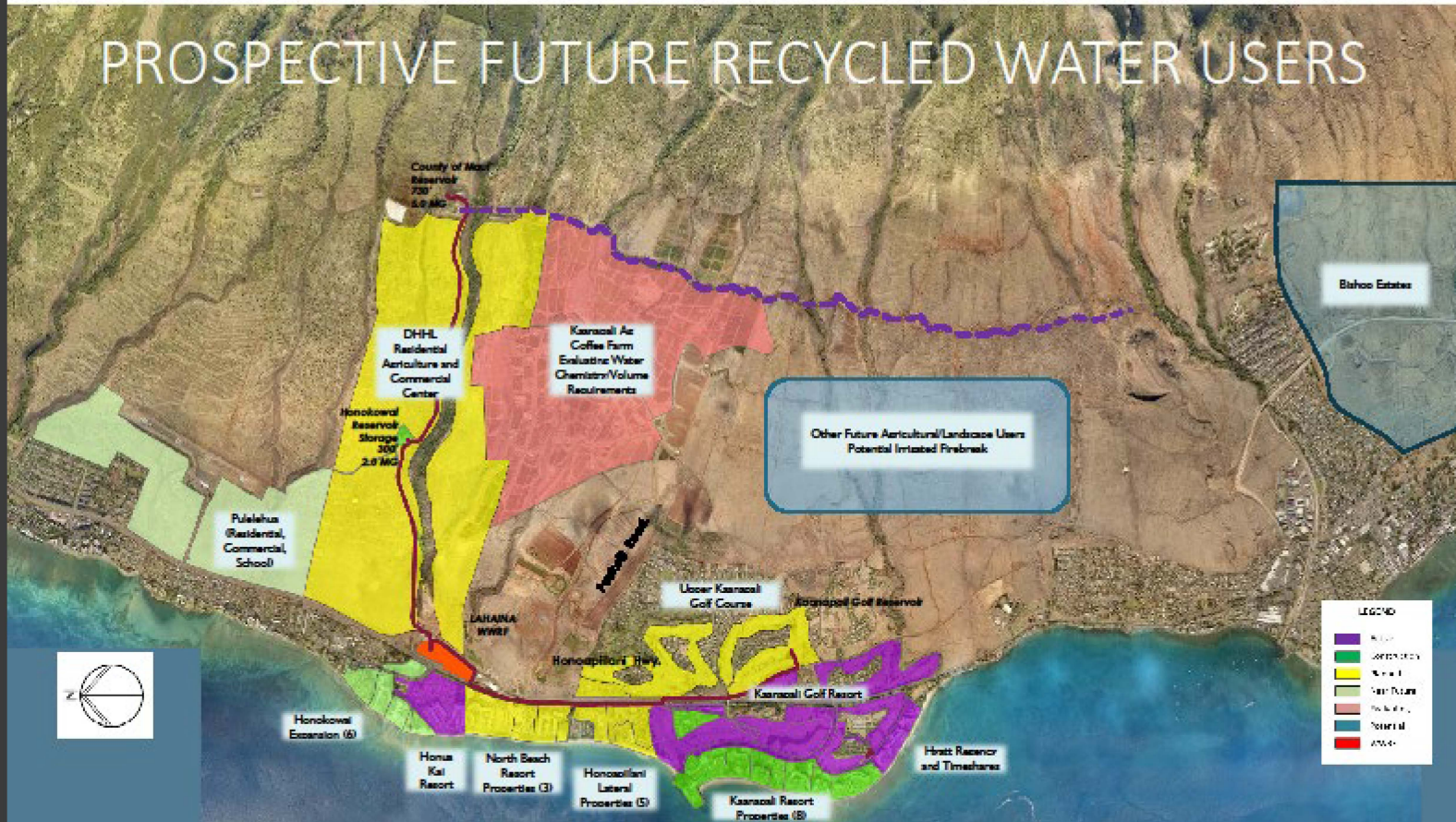
R-1 Pipelines

Ulupalakua Ranch (Agriculture)

Wailea Properties (Commercial)



PROSPECTIVE FUTURE RECYCLED WATER USERS



WAI Committee

From: Nadine C. Orikasa <Nadine.Orikasa@co.maui.hi.us>
Sent: Friday, March 6, 2026 2:56 PM
To: Shayne R. Agawa; WAI Committee
Cc: Thomas M. Cook; Jared P. Agtunong; Lori Ann M. Tengan; Stacy Takahashi; Keone J. Hurdle
Subject: RE: Presentation from DEM on CIP Projects

Apologies, WWRD had a few more revisions. Please use this version of the presentation for the March 9th WAI Committee Meeting. Thank you.

From: Nadine C. Orikasa
Sent: Friday, March 6, 2026 11:19 AM
To: Shayne R. Agawa <Shayne.Agawa@co.maui.hi.us>; wai.committee@mauicounty.us
Cc: Thomas M. Cook <Thomas.Cook@mauicounty.us>; jared.agtunong <Jared.Agtunong@mauicounty.us>; Lori Ann M. Tengan <LoriAnn.Tengan@mauicounty.us>; Stacy Takahashi <Stacy.N.Takahashi@mauicounty.us>; Keone J. Hurdle <Keone.Hurdle@mauicounty.us>
Subject: RE: Presentation from DEM on CIP Projects

Please find attached, 2nd revision of DEM's presentation for the March 9, 2026, WAI Committee Meeting. Thank you.

From: Shayne R. Agawa <Shayne.Agawa@co.maui.hi.us>
Sent: Wednesday, February 25, 2026 4:46 PM
To: wai.committee@mauicounty.us
Cc: Nadine C. Orikasa <Nadine.Orikasa@co.maui.hi.us>; Thomas M. Cook <Thomas.Cook@mauicounty.us>; jared.agtunong <Jared.Agtunong@mauicounty.us>; Lori Ann M. Tengan <LoriAnn.Tengan@mauicounty.us>; Stacy Takahashi <Stacy.N.Takahashi@mauicounty.us>; Keone J. Hurdle <Keone.Hurdle@mauicounty.us>
Subject: RE: Presentation from DEM on CIP Projects

Revised presentation for WAI Committee 3/9/26 attached. Thx, SA.

Shayne R. Agawa, P.E.
Director

County of Maui
Dept. of Environmental Management
2145 Kaohu St., Suite 102
Wailuku, HI 96793
Ph. (808) 270-8230
Fax. (808) 270-8234
