

March 7, 2017

MEMO TO: WR-27 File

F R O M: Alike Atay, Chair 
Water Resources Committee

SUBJECT: **TRANSMITTAL OF INFORMATIONAL DOCUMENT RELATING TO
ACCESS THROUGH THE HANS MICHEL PROPERTY FOR
MAINTENANCE AND OPERATION OF KANAHA VALLEY STREAM
(WR-27)**

The attached informational document pertains to Item 27 on the Committee's agenda.

wr:ltr:027amc03:kcw

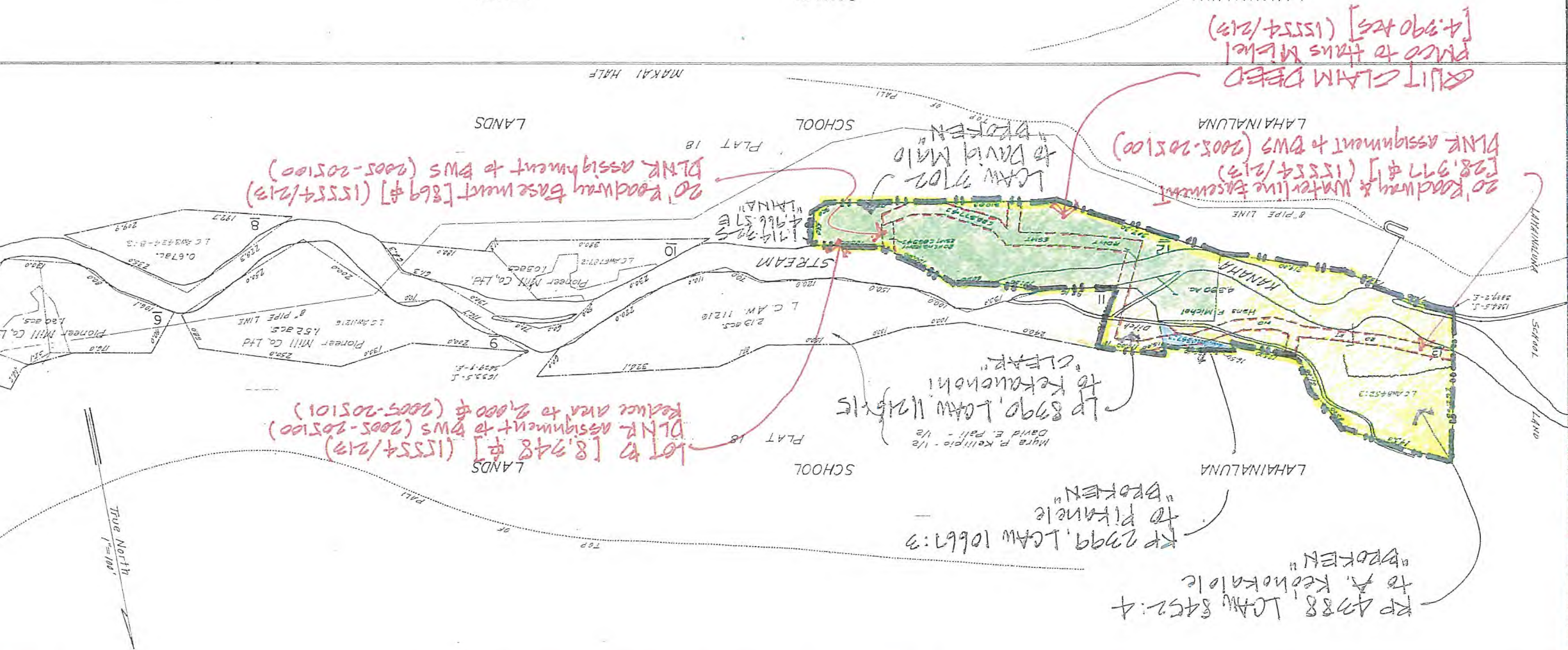
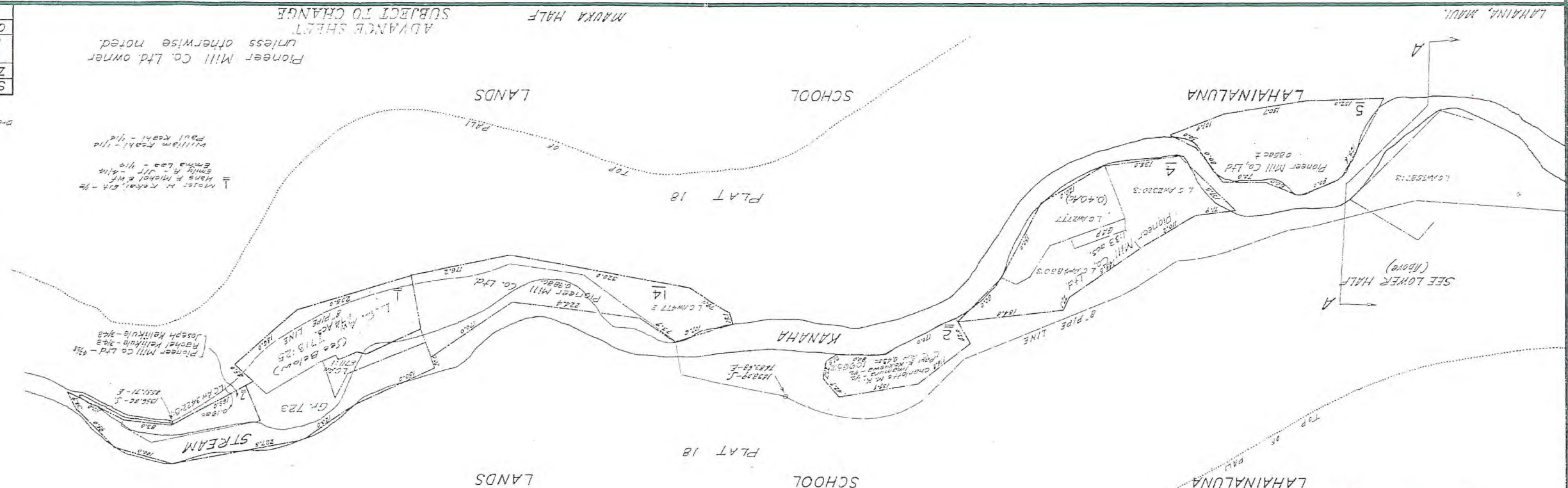
Attachment

RECEIVED AT WR MEETING ON 3/8/17

Dwg No. 314
 By: C.K.H. Beach 1992
 Source: Survey Office

Appr. by: _____
 Revised by: _____
 Appr. by: _____

1	1992
2	1993
3	1994
4	1995
5	1996
6	1997
7	1998
8	1999
9	2000
10	2001
11	2002
12	2003
13	2004
14	2005
15	2006
16	2007
17	2008
18	2009
19	2010
20	2011
21	2012
22	2013
23	2014
24	2015
25	2016
26	2017
27	2018
28	2019
29	2020



SECOND DIVISION	ZONE SEC. PLAT	4617
CONTAINING PARCELS		
Scale: 1 in. = 100 ft.		

ADVANCE SHEET
 SUBJECT TO CHANGE
 Pioneer Mill Co. Ltd. owner
 unless otherwise noted.

PRINTED

orig.