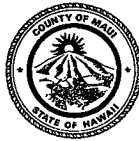


Council Chair
Mike White

Vice-Chair
Robert Carroll

Presiding Officer Pro Tempore
Stacy Crivello

Councilmembers
Alika Atay
Elle Cochran
Don S. Guzman
Riki Hokama
Kelly T. King
Yuki Lei K. Sugimura



Director of Council Services
Sandy K. Baz

COUNTY COUNCIL
COUNTY OF MAUI
200 S. HIGH STREET
WAILUKU, MAUI, HAWAII 96793
www.MauiCounty.us

February 21, 2017

RECEIVED
2017 FEB 27 PM 3:30
OFFICE OF THE
COUNTY CLERK

The Honorable Mike White
Council Chair
County of Maui
Wailuku, Hawaii 96793

Dear Chair White:

SUBJECT: **POLLUTION REDUCTION PROJECTS IN WEST MAUI**
(PAF 17-020)

May I request the matter relating to pollution reduction projects currently underway in West Maui that interface with County management areas, incorporating attached documents from Council term (2015-2017), be placed on the next Council meeting agenda.

Sincerely,

A handwritten signature in black ink that reads "Elle Cochran". The signature is fluid and cursive.

ELLE COCHRAN
Councilmember

paf:grs:17-020d
Enclosure

COUNTY COMMUNICATION NO. 17-121

JEFFREY T. KUWADA
County Clerk



1EM-30 ✓
JOSIAH K. NISHITA
Deputy County Clerk

OFFICE OF THE COUNTY CLERK

COUNTY OF MAUI
200 SOUTH HIGH STREET
WAILUKU, MAUI, HAWAII 96793
www.mauicounty.gov/county/clerk

November 1, 2013

Honorable Elle Cochran, Chair
Infrastructure and Environmental
Management Committee
Council of the County of Maui
Wailuku, Hawaii 96793

Dear Chair Cochran:

Respectfully transmitted is a copy of COUNTY COMMUNICATION NO. 13-346, from Councilmember Elle Cochran, that was referred to your Committee by the Council of the County of Maui at its meeting of November 1, 2013.

Respectfully,

A handwritten signature in black ink, appearing to read "J. Nishita", is written over a horizontal line.

JOSIAH K. NISHITA
Deputy County Clerk

/jym

Enclosure

cc: Director of Council Services

2013 NOV -1 AM 11:55
OFFICE OF THE
COUNTY COUNCIL

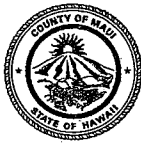
RECEIVED

Council Chair
Gladys C. Baisa

Vice-Chair
Robert Carroll

Presiding Officer Pro Tempore
Michael P. Victorino

Council Members
Elle Cochran
Donald G. Couch, Jr.
Stacy Crivello
Don S. Guzman
G. Riki Hokama
Mike White



Director of Council Services
David M. Raatz, Jr., Esq.

RECEIVED

COUNTY COUNCIL 2013 OCT 21 PM 3:36

COUNTY OF MAUI
200 S. HIGH STREET
WAILUKU, MAUI, HAWAII 96793
www.mauicounty.gov/council

OFFICE OF THE
COUNTY CLERK

October 21, 2013

The Honorable Gladys C. Baisa, Chair
County Council
County of Maui
Wailuku, Hawaii 96793

Dear Chair Baisa and Members:

SUBJECT: POLLUTION REDUCTIONS PROJECTS IN WEST MAUI

My office is in receipt of the attached letter from Tova Callender, West Maui Watershed & Coastal Management Coordinator, West Maui Ridge to Reef Initiative, requesting an opportunity to provide to the Council an informational presentation about pollution reduction projects, currently underway in West Maui, that interface with County managed areas.

The goal of the West Maui Ridge to Reef Initiative is to reduce stressors and enhance the health and resiliency of West Maui coral reefs and near shore waters through the reduction of land-based pollution threats from the summit of Pu'u Kukui to the outer reef. Support from the County of Maui plays a critical role in the success of this initiative.

I kindly request for this matter to be posted on an agenda for the next available Council meeting.

Mahalo,

Elle Cochran
ELLE K. COCHRAN
Council Member

Enclosure

COUNTY COMMUNICATION NO. 13-346

RECEIVED
2013 OCT 21 PM 3:32
OFFICE OF THE
COUNTY CLERK

From: Tova Callender <tovacallender@gmail.com>
To: "Cochran, Elle" <elle.cochran@mauicounty.us>
CC: Robert Parsons <Robert.Parsons@co.maui.hi.us>, Liz Foote <lfoote@coral.org>
Date: 10/15/2013 12:16 PM
Subject: Request to present update to Infrastructure committee on R2R projects
Attachments: Request for agenda item COM I&E com- T Callender.doc

Aloha Councilwoman Cochran,

Thanks for all of your support in the past, and for lending a hand to maintaining our native planting the weekend before last. I so appreciate that you make it a priority to be there, tangibly making a difference.

I am writing to request the opportunity to update your Infrastructure and Environment Committee about the many pollution reduction projects underway in West Maui. Attached is a letter which more fully explains the intention and anticipated content of the update.

The West Maui Ridge to Reef Initiative is a highly collaborative effort, bringing attention, funding and expertise needed to address the decline in coral reef health in West Maui. As the coordinator for actions in Honokowai and Wahikuli watersheds, I recognize the importance of the County of Maui's involvement in this effort, and hope that by presenting to your committee, information will be shared and a dialogue opened that will lead to greater success in achieving our shared goals of stewardship for the natural environment.

Thank you very much for your consideration,
Tova

--
Tova Callender

West Maui Watershed & Coastal Mg Coordinator
NFWF's Consultant to coordinate the activities of the Coral Reef Task Force
in West Maui
(808) 214-4239
www.westmauir2r.com

www.kaanapaliwmp.com
www.hawaiicoralreefstrategy.com

October 15, 2013

Councilwoman Elle Cochran
Kalana O Maui Building
200 South High St.
Eighth Floor
Wailuku, Hawaii 96793



RE: request to update Infrastructure & Environmental Management Committee on West Maui Ridge to Reef implementation projects

Dear Councilwoman Cochran,

I am writing to request an opportunity to present to the Infrastructure & Environmental Management Committee about several fully funded land based pollution reduction projects that interface with county managed areas currently underway in West Maui. These projects are all identified as priorities in the Wahikuli-Honokowai Watershed Management Plan, which is a component of the West Maui Ridge to Reef Initiative.

The goal of the West Maui Ridge to Reef (R2R) Initiative is to reduce stressors and enhance the health and resiliency of West Maui coral reefs and near shore waters through the reduction of land-based pollution threats from the summit of Pu'u Kukui to the outer reef. This initiative is an all-encompassing approach across multiple agencies (federal, state and local), organizations, and jurisdictions to address adverse impacts to coral reefs in West Maui. Implementation has begun in the priority watersheds of Honokowai and Wahikuli, and planning is moving northward this fall to include Kahana, Honokahua and Honolua watersheds. The County of Maui is seen as a critical partner in the success of this collaborative effort.

A significant investment of federal, state and private funds has been made in West Maui in the form of planning and research, but also pollution reduction projects that have recently begun or are about to begin. There are several that have overlap with county infrastructure or potential interests. These include a pilot curb inlet basket project to be followed by a larger scale effort in the spring, post fire rehabilitation planning, design for a constructed wetland in Honokowai Beach Park, tentatively a rain garden in Pohaku Beach Park, a rain garden hui and an analysis to support design retrofit engineering for Honokowai Dam #8. A close collaborator in the R2R, the Coral Reef Alliance has been working with resorts on R1 preparedness in anticipation of infrastructure expansion.

While some of these projects may seem self-explanatory, others would be clearer with additional explanation of intent, location and partners that my colleagues I would like to provide to your committee. In addition, support in terms of availability of manpower for the maintenance of curb inlet baskets as well as efficiency of the permitting process for rain garden installations remain points of discussion that may be furthered in your committee. To date, we have been working with the Dept. of Public Works, Parks and Recreation and the Planning Department to coordinate projects, as well as the Environmental Coordinator to the Mayor, Rob Parsons, who sits on the R2R Working Group.

Thank you very much for considering this addition to your meeting agenda. The Dec. 16th or a later meeting would be compatible timing with our schedules should you find this an appropriate addition. If more information about project specifics would be of assistance please let me know and I will create the needed project summaries.

I look forward to your reply.

Best regards,

Tova Callender

Tova Callender

West Maui Watershed & Coastal Management Coordinator

tova@westmaui2r.com

808-214-4239

Cc: Rob Parsons, Environmental Coordinator to the Mayor

Cc: Liz Foote, Coral Reef Alliance

West Maui Ridge to Reef Initiative Update:

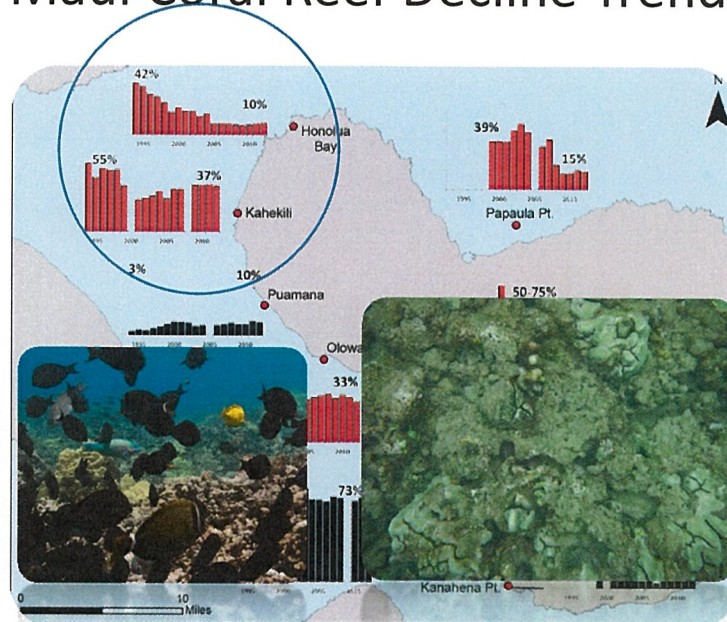
County of Maui, Infrastructure &
Environment Committee Jan.6, 2014



Tova Callender

West Maui Watershed & Coastal
Management Coordinator

Maui Coral Reef Decline Trends

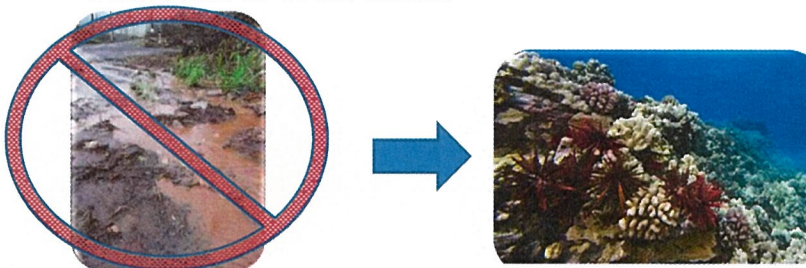


West Maui Priority Area

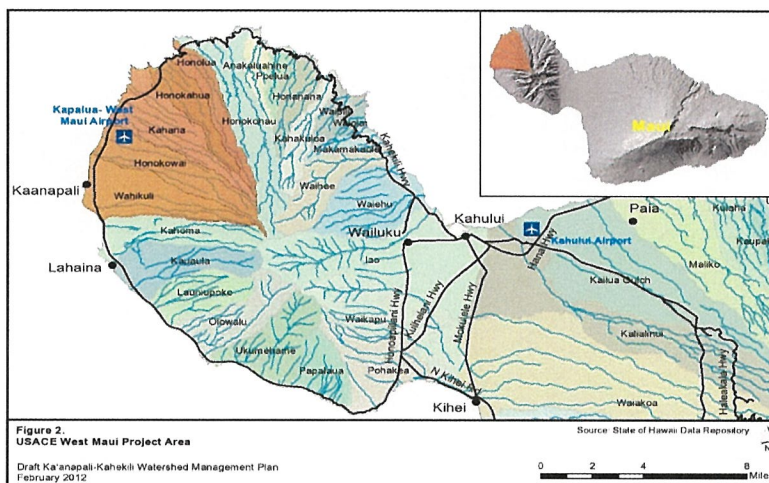
- US Coral Reef Task Force designated Wahikuli and Honokowai priority watersheds in 2011
- Hawaii Coral Reef Strategy designated West Maui reefs as a priority management area
- This means, Federal and State agencies and NGO partners are looking to West Maui.....

Goal of West Maui Ridge to Reef (R2R) Initiative

- To restore and enhance the **health** and resiliency of **West Maui coral reefs** and near-shore waters through the **reduction of land-based pollution** threats from the summit of Pu`u Kukui to the outer reef. These efforts will be guided by the values and traditions of West Maui.



West Maui Ridge to Reef Area



A Collaborative Effort

Funding and Agency Support Team:
Directs & Funds



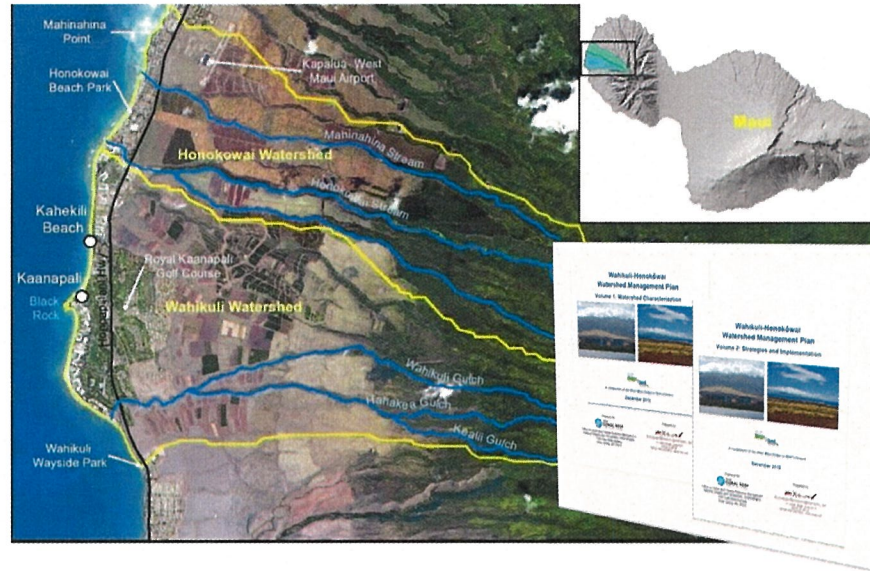
Local Working Group- Advises



R2R Hui- Partners & Supports



Phase 1: Current Focus Wahikuli & Honokowai



Already Completed: Native Planting for Slope Stabilization Behind Hanaka'ō'ō Cemetery

- Over 1000 native plants stabilizing and beautifying previously bare slope
- 50 volunteers installed, and volunteer maintained
- *With the support of Parks Dept*



Already Completed: Wahikuli Wayside Park Demonstration Rain Garden



- Filters and allows infiltration of shower water
- Training and installation held in March 2013
- 70 volunteers participated
- Maintained by volunteers

Underway: Rain Garden Hui



- Opportunity for funding and technical support to install rain garden
- Join hui and help with two other installations
- Wahikuli and Honokowai watersheds- COM interest?

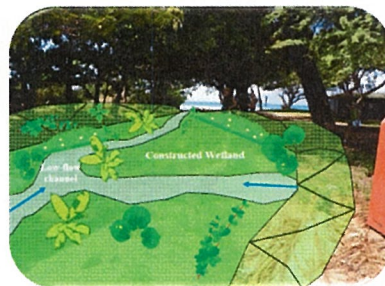
Underway: Post Fire Rehabilitation Planning



- *Working with county & landowners through West Maui Fire Prevention Task Force*
- *Generating plan for rapid response following a fire*
- *Completing West Maui Community Wildfire Prevention Plan – public meeting in Jan/Feb*

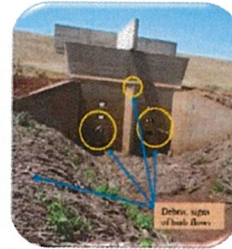
Underway: Constructed Wetland Design at Honokowai Beach Park

- *~24 acres of urban land drain, untreated via channel to ocean*
- *Constructed wetland design for nature-mimicking treatment of polluted urban runoff*
- *In cooperation with Parks Dept. & DPW*



Pending: Honokowai Dam #8 Retrofit Analysis to Reduce Flow-through of Fine Particles

- A study to collect and analyze the needed data to understand the system dynamics
- Recommendations for retrofit designs to reduce silt passing into channel
- Would be followed by engineering design and construction
- *In partnership with DPW, NRCS, DLNR Dam Safety*

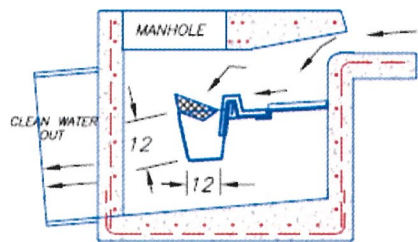


Pending: Pohaku Beach Park Rain Gardens & Signage

- Rain gardens below shower and north of parking lot to treat polluted runoff and allow greater infiltration
- Community engagement
- *Partnering with Parks Dept.*



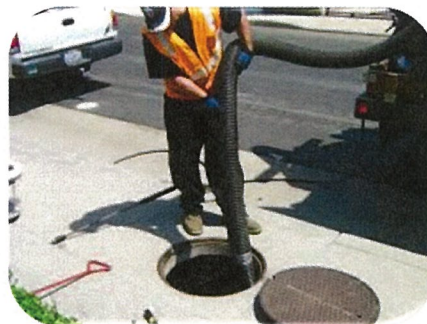
Underway: Curb Inlet Basket Installations



- Pilot phase started in Kā'anapali Resort for 7 baskets
- Additional ~38 basket project with SRGII DOH 319 funds to begin in spring, 2014
- **COM has committed to two baskets- what would it take to support more?**

Considerations: Curb inlet basket maintenance

- Clean out basket with vactor truck through man hole
- Estimated 2-3x/yr
- Estimated 15-20 min/basket for 2 workers
- If there are 38 baskets, 30 min/basket, 3x/yr = 114 hr or 15 days/ year (or 5 labor-hour days 3x/yr)



West Maui Kumuwai: A movement for ocean health



- Works through existing community efforts (non-profits, volunteer base, agencies)
- Enables individual actions to reduce polluted run-off

Ocean Friendly Branding Opportunity for County Parks & Grounds

Adopt 10/16 behaviors to be branded, i.e.

- Low to no fertilizer use
- Auto irrigation
- Check for over watering and erosion etc.



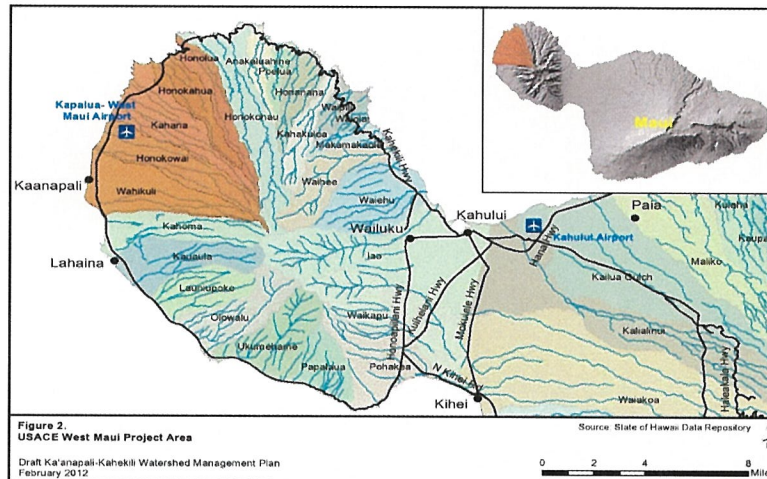
Benefits

- Promotion on website, press release etc., and reduced polluted run-off
- Public recognition for COM as ocean stewards

Is there County interest in participating?

West Maui Ridge to Reef Area

- expanding this year to include Kahana, Honokahua and Honolua



Join Us to Learn Firsthand!

What & Who: Reef and Watershed Site Visit and Snorkel Tour! Join our team from CORAL, the West Maui Ridge to Reef Initiative and the Division of Aquatic Resources for a talk story and site visit to learn about ongoing watershed stewardship efforts in West Maui, and see the reef firsthand!

When & Where: 9:30 am – noonish, meeting at Kahekili Beach Park pavilion

Bring: Snorkel Gear

Friday,
January
17th

Wednesday,
January 22nd





www.westmauir2r.com
www.westmauikumuwai.org

Tova Callender

- tova@westmauir2r.com
- 808-214-4239

Liz Foote

- lfoote@coral.org
- 808-669-9062