

COUNCIL OF THE COUNTY OF MAUI
WATER AND INFRASTRUCTURE
COMMITTEE

August 26, 2025

Committee
Report No. _____

Honorable Chair and Members
of the County Council
County of Maui
Wailuku, Maui, Hawaii

Chair and Members:

Your Water and Infrastructure Committee, having met on August 4, 2025, makes reference to the following:

1. Resolution 25-130, entitled “AUTHORIZING THE ADOPTION OF THE OFFICIAL PAID PARKING ZONE MAPS INCORPORATED BY REFERENCE IN SECTION 10.77.010, MAUI COUNTY CODE ESTABLISHMENT OF PAID PARKING ZONES.”

Resolution 25-130’s purposes are to: 1) establish a digital paid parking zone map for County beach parks in South Maui; and 2) update the digital paid and permit parking zone maps for Wailuku Town.

2. Bill 79 (2025), entitled “A BILL FOR AN ORDINANCE AMENDING CHAPTER 10.77, MAUI COUNTY CODE, RELATING TO THE ESTABLISHMENT OF PAID PARKING ZONES IN WAILUKU TOWN AND AT SOUTH MAUI COUNTY BEACHES.”

Bill 79’s purpose is to establish paid parking zones for County beach parks in South Maui, as identified on the official digital paid parking zone map.

By correspondence dated July 25, 2025, the Chair of your Committee transmitted a proposed CD1 version of Bill 79 (2025), entitled “A BILL FOR AN ORDINANCE AMENDING TITLE 10, ARTICLE II, MAUI COUNTY CODE, ON SPECIAL PARKING REGULATIONS TO ESTABLISH

COUNCIL OF THE COUNTY OF MAUI
WATER AND INFRASTRUCTURE
COMMITTEE

Page 2

Committee
Report No. _____

PAID PARKING ZONES IN SOUTH MAUI AND UPDATE PAID AND PERMIT PARKING ZONE MAPS IN WAILUKU.” The proposed CD1 version:

1. Amends the bill’s title and purpose statement.
2. Establishes new paid parking zones in South Maui at County beaches and parks and attaches a map to depict the paid parking zones.
3. Repeals paid and permit parking zone maps for Wailuku Town and adopts new maps. The new maps remove the “Īao Theater Parking Lot” and “County of Maui Parking Lot” from designated PARK MAUI locations established under Ordinance 5568 (2023).
4. Clarifies that the Director of Transportation is authorized to administer provisions in Chapters 10.77 and 10.78, Maui County Code.
5. Addresses overlap between paid and permit parking zones and makes amendments for consistency with the Fiscal Year 2026 Budget, Appendix B.
6. Incorporates nonsubstantive and technical revisions for clarity, consistency, and style.

Your Committee noted that PARK MAUI, launched by the County in late 2023, is described on the program’s website as striving “to implement data-driven solutions for parking at beach parks, in business districts, and on streets throughout our island’s most heavily utilized areas.” Of its many goals, the program aims to “improve access to beach parks for residents as a free recreational experience.”

A representative from the County Department of Transportation said Bill 79 clarifies regulations for parking at Kama’ole Beach Parks I, II, and

COUNCIL OF THE COUNTY OF MAUI
WATER AND INFRASTRUCTURE
COMMITTEE

Page 3

Committee
Report No. _____

III under the PARK MAUI pilot parking program. The program employs a mobile app that would provide free parking for residents with a valid Hawai'i driver's license. Only Hawai'i residents may park at locations identified on the paid parking zone map as "resident recreation hours" before 10 a.m. on weekends and on County holidays.

The pilot parking program is anticipated to begin in early 2026 pending permit reviews and mobile app testing, with community educational outreach planned.

The Department representative said the plan is to include additional County beach parks in South Maui in the paid parking zone map. Your Committee stressed the importance of analyzing usage patterns, permit-processing challenges, and community feedback before further expansion.

Your Committee further amended Bill 79 to delete the flat rate charge under Code Section 10.77.020 to ensure consistency with the rate for parking passes established in the annual budget.

Your Committee notes Code Subsection 10.77.010(A) does not authorize paid parking zone maps to be adopted by resolution. Accordingly, the permit parking zone maps originally attached to Resolution 25-130 were instead attached to Bill 79, CD1, as exhibits. Your Committee agreed to file Resolution 25-130.

Your Committee expressed support for Bill 79, CD1, to improve beach and park access in South Maui for County residents and mitigate parking congestion.

Your Committee voted 7-0 to recommend passage of Bill 79, CD1 (2025), on first reading and the filing of Resolution 25-130. Committee Chair Cook, Vice-Chair Sugimura, and members Johnson, Kama, Lee, Paltin, and Sinenci voted "aye." Committee members Rawlins-Fernandez and U'u-Hodgins were excused.

COUNCIL OF THE COUNTY OF MAUI

WATER AND INFRASTRUCTURE COMMITTEE

Page 4

**Committee
Report No. _____**

Your Committee is in receipt of Bill 79, CD1 (2025), entitled “A BILL FOR AN ORDINANCE AMENDING TITLE 10, ARTICLE II, MAUI COUNTY CODE, ON SPECIAL PARKING REGULATIONS TO ESTABLISH PAID PARKING ZONES IN SOUTH MAUI AND UPDATE PAID AND PERMIT PARKING ZONE MAPS IN WAILUKU,” approved as to form and legality by the Department of the Corporation Counsel, incorporating your Committee’s recommended revisions and nonsubstantive revisions.

Your Water and Infrastructure Committee RECOMMENDS the following:

1. That Bill 79, CD1 (2025), attached, entitled “A BILL FOR AN ORDINANCE AMENDING TITLE 10, ARTICLE II, MAUI COUNTY CODE, ON SPECIAL PARKING REGULATIONS TO ESTABLISH PAID PARKING ZONES IN SOUTH MAUI AND UPDATE PAID AND PERMIT PARKING ZONE MAPS IN WAILUKU,” be PASSED ON FIRST READING and be ORDERED TO PRINT; and
2. That Resolution 25-130 be FILED.

This report is submitted in accordance with Rule 3 of the Rules of the Council.



TOM COOK, Chair

ORDINANCE NO. _____

BILL NO. **79, CD1** (2025)

A BILL FOR AN ORDINANCE AMENDING TITLE 10, ARTICLE II, MAUI COUNTY CODE, ON SPECIAL PARKING REGULATIONS TO ESTABLISH PAID PARKING ZONES IN SOUTH MAUI AND UPDATE PAID AND PERMIT PARKING ZONE MAPS IN WAILUKU

BE IT ORDAINED BY THE PEOPLE OF THE COUNTY OF MAUI:

SECTION 1. This Ordinance's purposes are to:

- (1) Establish a paid parking zone in South Maui and adopt a map depicting that zone; and
- (2) Repeal the maps depicting the paid parking zone and permit parking zone for Wailuku and adopt updated maps in their stead.

The updated paid parking zone map for Wailuku retains the Wailuku Garage facility but removes the County of Maui parking lot and Īao Theater parking lot. The updated permit parking zone map for Wailuku retains the Wailuku Garage facility but removes the Īao Theater Parking Lot.

This Ordinance also amends various provisions in Title 10, Article II, Maui County Code, on special parking regulations for clarity and consistency.

SECTION 2. Section 10.76.060, Maui County Code, is amended by amending subsection B to read as follows:

“B. When parking in the Wailuku garage facility and premises, it is unlawful for any person to:

1. Park a vehicle between the hours of 11:00 p.m. and 5:00 a.m., [except in the case that a] unless the vehicle has a valid parking permit, as permitted under chapter 10.78,

and [following parking permit] follows permit parking zone policies.

2. Park outside of marked parking stalls.
3. Park a motorcycle outside of designated motorcycle parking stalls.
4. Park in an electric vehicle stall when not actively charging.
5. Park in violation of any posted regulations.”

SECTION 3. Section 10.77.010, Maui County Code, is amended to read as follows:

“10.77.010 Establishment of paid parking zones. A.

Paid parking zones in on-street and off-street locations, including County-owned or operated surface lots and garages, and other areas under the County's jurisdiction, may be established by the council by ordinance. Paid parking zones must be identified on an official digital paid parking zone map, such as within a geographic information system, stored on file with the County and approved by the council. No person may stop, stand, or park a vehicle for any purpose or period of time in a paid parking zone without payment of the parking fee during the days and times indicated on the parking payment device or posted signage for that zone[.], except that:

1. If the paid parking zone is also a permit parking zone, vehicles with a parking permit for that permit parking zone need not pay the paid parking zone parking fee.
2. Parking in paid parking zones at beaches and parks is free for residents who scan a valid driver's license with a State zip code at the parking location.
3. Before 10 a.m. on weekends and County holidays, only residents may park at the locations identified as “resident recreation hours” on paid parking zone maps. Parking under this paragraph is free for residents who scan a valid driver's license with a State zip code at the parking location.

B. Upon establishment of a paid parking zone, the director of transportation is authorized to install and maintain parking payment devices and identify paid parking spaces to indicate where authorized parking is permitted.

C. For each paid parking zone, the director of transportation must install signage to indicate the time limitations for paid parking and utilization of parking payment devices.

D. Paid parking zones are established in the following areas, [with a digital] as shown on the paid parking zone [map

incorporated by reference] maps adopted by the council and [located online at] available on the department of transportation's website:

1. Wailuku[, including areas identified on the official paid parking zone map, as adopted by the council.] Town, map W-1.
2. South Maui beaches and parks, map SM-1."

SECTION 4. Section 10.77.020, Maui County Code, is amended to read as follows:

"10.77.020 Determination of rates. It is the intent of paid parking to achieve a target occupancy rate of 85 percent. Occupancy rate refers to the percentage of spaces occupied by vehicles during the hours of operation of the paid parking zone. The paid parking rates and hours of operation will be established in the rates and fees schedule by the council and may be adjusted by the director of transportation in accordance with this chapter.

[Hourly] Subject to the exceptions in subsection 10.77.010(A), hourly paid parking rates for paid parking zones may be no less than 50 cents and no more than \$10 per hour[. The], and the flat rate for paid parking [may be no less than \$1 and no more than \$50 per parking session. A flat rate refers to a charge that is applied for a parking session regardless of length of time.] zones must be set in the annual budget for daily, weekly, or monthly parking passes. The director of transportation must set the rate of parking payment devices and flat rate parking, consistent with achieving the 85 percent target occupancy rate, based upon parking occupancy data. The director of transportation may adjust parking payment device rates in increments of twenty-five cents at a time. Parking payment device rate adjustments must not occur more than once a month and must not increase more than \$2 per calendar year within the established range of rates. The director of transportation may adjust the hours of operation and parking time limits of a paid parking zone."

SECTION 5. Section 10.77.030, Maui County Code, is amended to read as follows:

"10.77.030 Payment; time limits. A. No person may park or permit a vehicle to be parked in any paid parking space, during the regulated time applicable to the paid parking zone in which the parking payment device is located, as designated by signs or the parking payment devices, without initiating a paid parking session

on a parking payment device, by purchasing parking time using a County-approved method of payment.

B. No person may park or permit a vehicle to be parked in any paid parking space for a period of time longer than [the period of time] designated by the parking payment device or signs, for which parking is lawfully permitted in the paid parking zone during the designated days and times. Vehicles parked longer than the posted time limit are subject to fines, impoundment, or both.

1. A vehicle may park in a space only for a period not to exceed the posted time limit. A vehicle will be determined to [not] have been parked longer than the posted time limit if it has not been moved at least out of the block face, parking lot, or parking garage after the expiration of the maximum time limit. A vehicle may not return to the initial block face, parking lot, or parking garage until the following day.

2. This section's provisions do not relieve any person from the duty to observe other laws, including more restrictive provisions of this chapter prohibiting or limiting the stopping, standing, or parking of vehicles in specified places or at specified times.

C. This section does not apply to any of the exceptions under subsection 10.77.010(A).

SECTION 6. Section 10.77.040, Maui County Code, is amended to read as follows:

“10.77.040 Hours of operations; exceptions. The director of transportation may suspend enforcement of section 10.77.030 to accommodate permitted special events, parades, emergency closures, or other similar activities.”

SECTION 7. Section 10.77.070, Maui County Code, is amended by amending subsection A to read as follows:

“A. The director of transportation must cause the regular collections of money deposited in the parking payment devices. Such employee or contractor must service the parking payment devices, count the money from the devices, determine the value of the money collected, and deposit the money as directed by the department of finance.”

SECTION 8. Section 10.78.010, Maui County Code, is amended as

follows:

1. By amending subsection A to read as follows:

“A. The director of transportation or the director's designee may issue parking permits for areas designated as permit parking zones, with a term not to exceed one year, subject to the requirements established in administrative rules adopted under this chapter.”

2. By amending subsection E to read as follows:

“E. Permit parking zones are established in the following areas, [with a digital] as shown on the permit parking zone map [incorporated by reference] adopted by the council and [located online at] available on the department of transportation's website:

1. Wailuku[, including areas identified on the official permit parking zone map, as adopted by the council.] Town, map W-2.”

SECTION 9. Section 10.78.020, Maui County Code, is amended to read as follows:

“10.78.020 Permit required. A. No person may park or permit a vehicle to be parked in any permit parking space during the regulated time applicable to the permit parking zone, as designated by signs and by the official [paid] permit parking zone map, without a valid parking permit issued by the County[.], except that if the permit parking zone is also a paid parking zone, vehicles paying the paid parking zone parking fee need not have a valid parking permit. Vehicles otherwise parked without a valid permit are subject to fines, towing, or impounding.

[1.] B. This section's provisions do not relieve any person from the duty to observe other laws, including more restrictive provisions of this chapter prohibiting or limiting the stopping, standing, or parking of vehicles in specified places or at specified times.”

SECTION 10. Exhibit “A” of Ordinance 5568 (2023) is repealed. The Wailuku Town paid parking zone map attached as Exhibit “W-1,” as referenced in Subsection 10.77.010(D)(1), Maui County Code, is adopted.

SECTION 11. Exhibit “B” of Ordinance 5568 (2023) is repealed. The

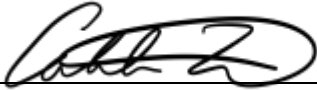
Wailuku Town permit parking zone map attached as Exhibit “W-2,” as referenced in Subsection 10.78.010(E)(1), Maui County Code, is adopted.

SECTION 12. The South Maui beach parks paid parking zone map attached as Exhibit “SM-1,” as referenced in Subsection 10.77.010(D)(2), Maui County Code, is adopted.

SECTION 13. Material to be repealed is bracketed. New material is underscored. In printing this bill, the County Clerk need not include the brackets, bracketed material, or the underscoring.

SECTION 14. This Ordinance takes effect on approval.

APPROVED AS TO FORM AND LEGALITY:

A handwritten signature in black ink, appearing to read 'Caleb P. Rowe', is written over a horizontal line.

CALEB P. ROWE
Department of the Corporation Counsel
County of Maui
LF 2025-0173
08.06.25 Bill 79, CD1

INTRODUCED BY:



Upon the request of the Mayor.



PARK MAUI WAILUKU TOWN

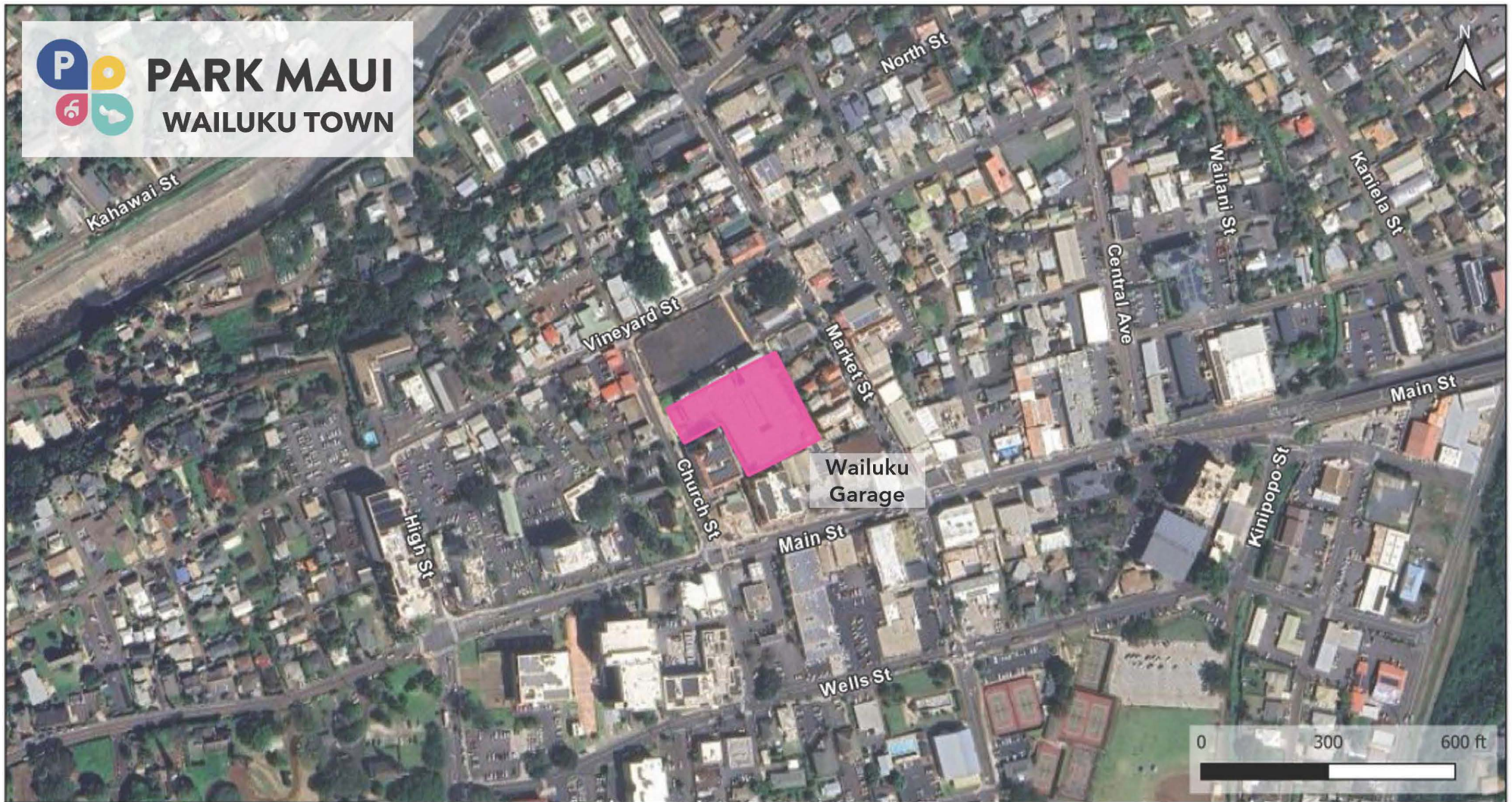


Exhibit W-1 PARK MAUI WAILUKU TOWN Paid Parking Zone



Off-Street Paid Parking Zone



PARK MAUI WAILUKU TOWN

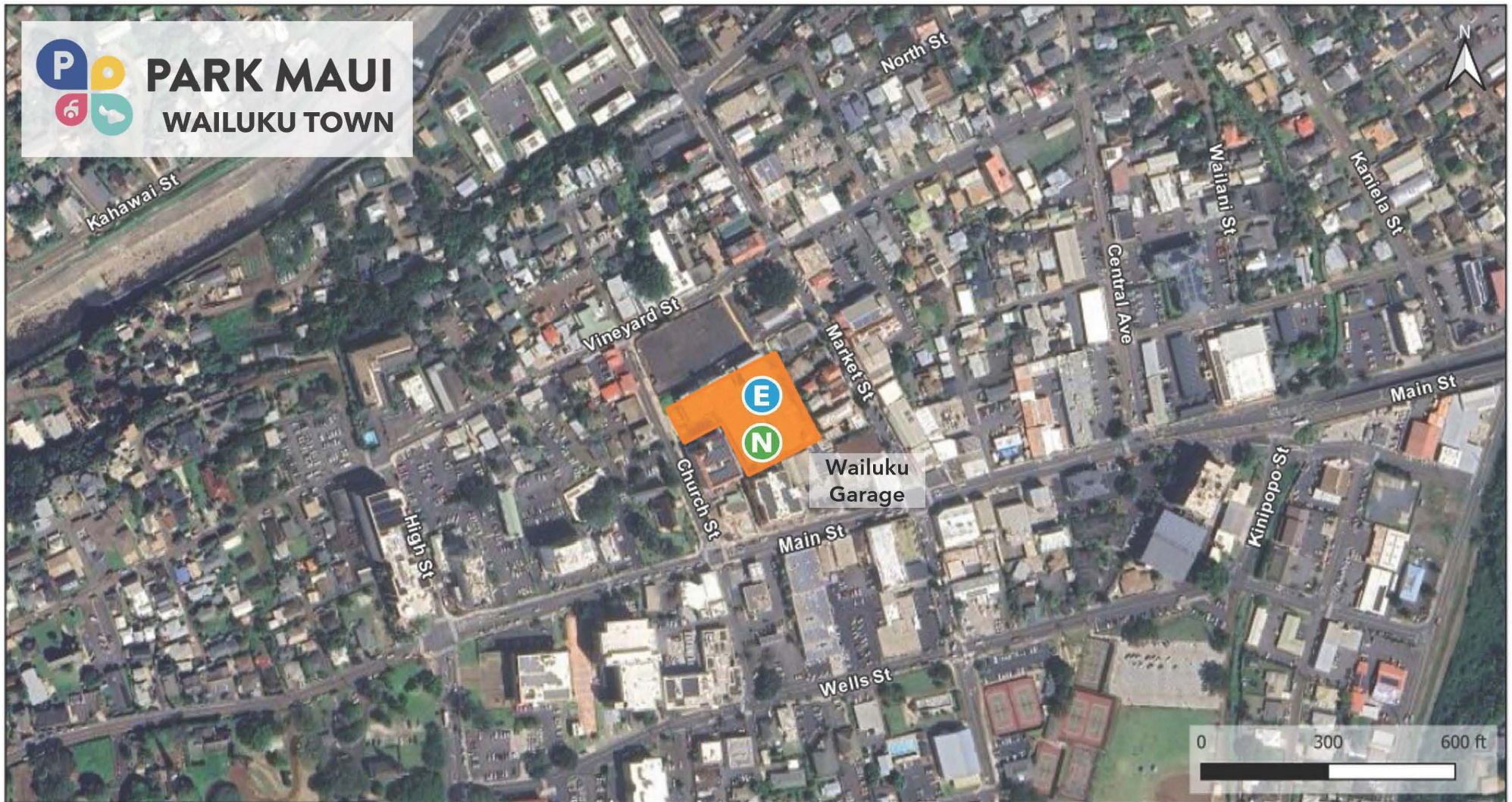





Exhibit W-2 PARK MAUI WAILUKU TOWN Permit Parking Zone

-  Employee Permit Parking
-  Neighborhood Permit Parking
-  Permit Parking Zone



PARK MAUI

KAMAOLE BEACH PARK



Exhibit SM-1

PARK MAUI

KAMAOLE BEACH PARK

Paid Parking Zone



Off-Street Paid Parking Zone



On-Street Paid Parking Zone



Resident Recreation Hours
(Before 10AM on weekends and County holidays)