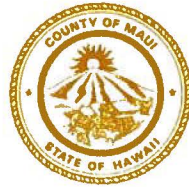


RICHARD T. BISSEN, JR.
Mayor

JOSIAH K. NISHITA
Managing Director

ROGERENE K.M. ARCE
Director

KOA HEWAHEWA
Deputy Director



DEPARTMENT OF AGRICULTURE
COUNTY OF MAUI
200 SOUTH HIGH STREET
WAILUKU, MAUI, HAWAII 96793
www.mauicounty.gov

March 31, 2026

Honorable Richard T. Bissen, Jr.
Mayor, County of Maui
200 South High Street
Wailuku, Hawaii 96793

APPROVED FOR TRANSMITTAL



Mayor Date

For Transmittal to:

Gabe Johnson, Chair
Agriculture, Diversification, Environment, and Public Transportation Committee
Maui County Council
200 South High Street
Wailuku, Hawaii 96793

Dear Chair Johnson:

**SUBJECT: OPERATIONAL AND BUDGETARY REVIEW OF THE
DEPARTMENT OF AGRICULTURE (ADEPT-1(2))**

Thank you for your letter dated March 17, 2026 regarding the above-mentioned subject matter. Please see our responses below to the following questions:

1. Please provide an updated Departmental organizational chart.

Attached please find an approved copy of the department's Fiscal Year 2026 organizational chart effective July 31, 2025.

2. Please provide a list of funding resources for farmers.

Although our department's grants opportunities are currently closed for this fiscal year, some other funding resources for farmers are listed in our "Agricultural Resource Directory" which can be found online on our County of Maui Department of Agriculture's webpage, specifically pages 16-18. Two hard-copies of the Directory are also included with this transmittal and are available upon request.

Additionally, due to current events, we have attached our department's "Disaster Support Resources," last updated March 31, 2026, regarding the impacts and recovery from the March 2026 Kona Low Storms. This resource will be updated as necessary, and we plan to upload it to our County webpage for public access.

Chair Gabe Johnson
March 31, 2026
Page 2

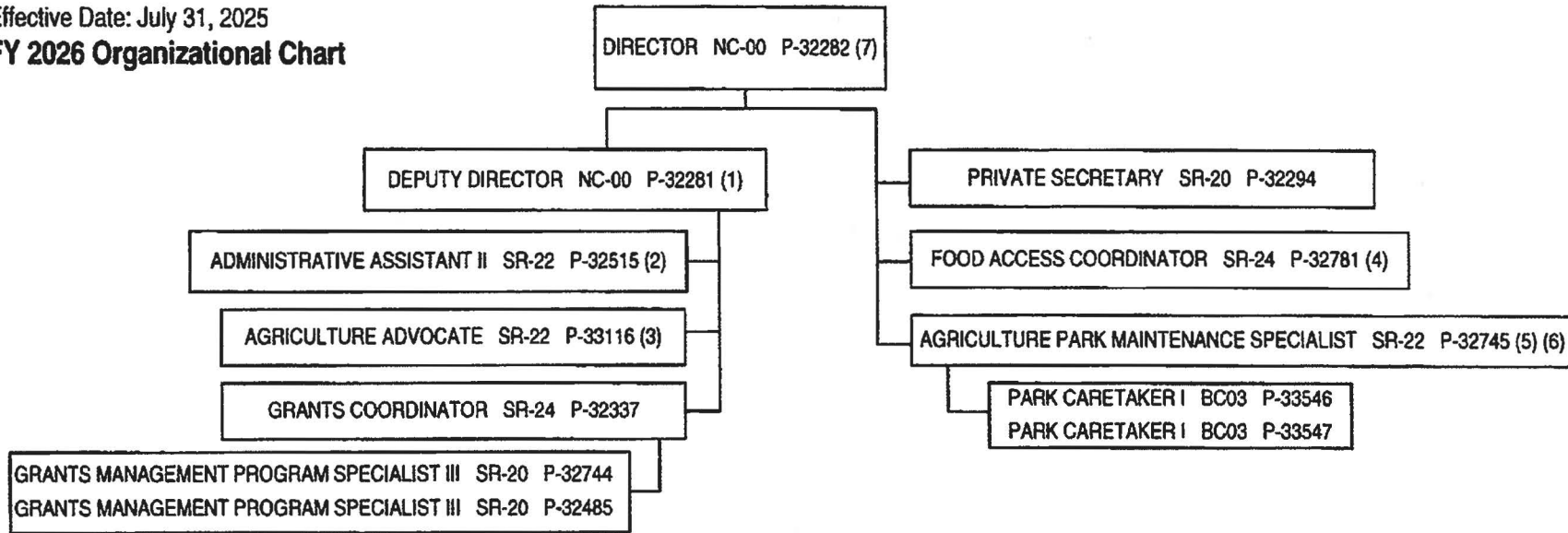
Should you have further questions, please do not hesitate to contact my office directly at ext. 8278 or by email to rogerene.arce@mauicounty.gov .

Sincerely,



Rogerene K. M. Arce
Director, Department of Agriculture

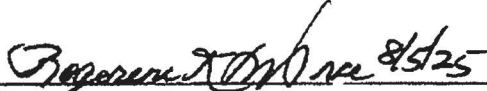
DEPARTMENT OF AGRICULTURE
COUNTY OF MAUI
 Effective Date: July 31, 2025
FY 2026 Organizational Chart



- (1) Position P-00675, Information and Education Specialist, budgeted as SR-22D for FY 2026, is in review by Department to determine duties and responsibilities, FY 2026 expansion position (page 1-3), reporting to Deputy Director.
- (2) Position P-00674, Secretary III, budgeted as SR-17D for FY 2026, is in review by Department to determine duties and responsibilities, potential reallocation to Secretary II being considered, FY 2026 expansion position (page 1-3), reporting to Administrative Assistant II.
- (3) Position P-33116, Agriculture Advocate, is in review by Department to determine revision of duties and responsibilities; position is listed in error as Aina Advocate in the FY 2026 Council Adopted Budget (page 1-4), FY2023 expansion position.
- (4) Position P-00676, Value Chain Coordinator, budgeted as SR-20D for FY 2026, is in review by Department to determine duties and responsibilities, FY 2026 expansion position (page 1-3), reporting to Food Access Coordinator.
- (5) Position P-00705, Park Project Coordinator, budgeted as SR-24G for FY 2026, is in review by Department to determine duties and responsibilities, potential reallocation to Park Caretaker II being considered, FY 2026 expansion position (page 1-3), reporting to Agriculture Park Maintenance Specialist.
- (6) Position P-00604, ISA Certified Arborist, budgeted as SR-19D for FY 2026, is in review by Department to determine duties and responsibilities, FY 2026 expansion position (page 1-3), reporting to Agriculture Park Maintenance Specialist.
- (7) Position P-XXXXX, Agriculture Conservation Liaison, budgeted at \$90,662 for FY 2026 (not included as an E/P in the budget), funded by Grant Revenues – USDA NRCS, executed Agreement NR2492510002C005 for Grant/Project Title: Maui Nui Natural Resources Liaison, grant period: 9/12/24-9/30/27, Ordinance No. 5657, Bill 60 (2024), CD1, FD2 (2024) FY2025 Budget; position is in the process of being filled, reporting to Director.

Department Submittal/Approval by:

Approved by:


 Rogefene K. M. Arce, Director Date 8/5/25


 Josiah K. Nishita, Managing Director Date 10/6/25

Disaster Support Resources

Kona Low Storms, March 2026

Maui County Department of Agriculture

Find this list on our website: mauicounty.gov/agriculture

Updated: March 31, 2026

All kōkua is for all three of our islands in Maui Nui except where noted.

DAMAGE REPORTS

We STRONGLY encourage all impacted ag producers to **photograph and report the damage** through the following surveys. The data will be used to get funding and help organize assistance.

1. Agriculture Stewardship Hawai'i's ("Ag Stew") **Agricultural Disaster Impact Report Survey**. Go to <https://report.agstewardshiphawaii.org/> and click "report impacts." If you would prefer to provide this information over the phone, please call **(808) 622-9026**. For more info, go to page 4.
2. Maui Emergency Management Agency's (MEMA) **Damage Survey**: <https://crisistrack.juvar.com/public/mauiHI/request.html>. For more info, go to page 4.

If you need help with these surveys, please contact us at MDOA: **(808) 270-8276**.

EMERGENCY GRANTS & LOANS

- **Hawai'i Department of Agriculture and Biosecurity (HDAB) Emergency Disaster Loan Program**: NEW loans available up to \$100k. Any loan under \$50k is considered a "microloan" and is faster. It's not on the web. Call or email Jillian Scheibe, HDAB Loan Officer, directly: jillian.c.scheibe@hawaii.gov, or **(808) 323-7591**. For more information, go to page 5.
- **USDA**:
 - **Natural Resources Conservation Service (NRCS)** can provide some funding to replace damaged fencing, irrigation, crops, etc. Call or email Jason Hew directly: jason.hew@usda.gov, **(808) 658-1375**. Have info and photos of the damage ready. Tell him if you have a prior or current contract with NRCS.
 - Kahului Service Center: 77 Hookele St., 2cd floor, Kahului..
 - Kaunakakai Service Center: 15 Kaunakakai Place, Unit 7. Kaunakakai.
 - **Farm Service Agency (FSA)** has disaster relief programs. Reach out directly to James Brown, Executive Director at the Maui County FSA office to report

damage and losses and find out about the programs: james.brown7@usda.gov, or (808) 933-8342. The address is 77 Hookele St., Suite 201, Kahului.

MORE RESOURCES

STATEWIDE:

- **Seeds of Wellbeing** is offering free therapy vouchers for Hawai'i agricultural producers. Vouchers can be accessed by emailing sow.ctahr@gmail.com.
 - Connect with Seeds of Wellbeing's farmer peer mentor program and more resources on their website, <https://manoa.hawaii.edu/sow-well/>.
- **Replacement SNAP**: SNAP recipients who lost food during the storm due to flooding, power outages, etc. can be reimbursed for food purchased with SNAP benefits. Submit a written statement to your DHS processing center with the name and contact information of the SNAP participant, an estimate of the value of food destroyed that was purchased with SNAP, and a description of what occurred and when - **Applications are due Thursday, April 2!** For more information go to: <https://humanservices.hawaii.gov/hawaii-dhs-announces-snap-replacement-benefits-for-current-recipients-affected-by-kona-low-weather-event/>.

COUNTY-WIDE:

- **Debris Removal**: For kupuna and those who are physically unable to self-haul debris, please notify the County by filling out an online storm debris report at mauicounty.gov/mema. For help filling out this form, call MEMA at (808) 270-7285. For more information go to: <https://www.mauicounty.gov/m/newsflash/home/detail/18608>.
- **Green Waste Containers**: Community groups or residents with large amounts of green waste, and accessible property, maybe eligible for a 30-yard roll-off container. First come, first served basis, while funds last. Contact DEM Environmental and Protection Division (EP&S) to request a container: (808) 270-7631.

MAUI

- **Maui Farmer Support Network** is offering free services, including coaching and support with paperwork, damage recovery and relief applications, farm site visits to assess damage and options, and short and long term recovery plan development. Maui Farmer Support Network also has a **12" Wood Chipper** to assist with tree

cleanup. They will bring it to you. Sign up to receive storm recovery support here:
<https://www.mauifarmernetwork.org/>

- **Malama Maui Nui** - organizes clean up crews and trash/green waste haul out from flooded properties <https://www.malamamauiinui.org/>
- **Nā Kia'i O Maui** is accepting flood relief donations at their center at: 150 Hana Highway, James Brown, Executive Director and financial donations at:
<https://www.nakiaiomau.org/>
- **Living Pono Project** fresh produce distribution at hub
<https://www.livingponoproject.org/>

MOLOKA'I - local contacts for ag assistance:

- **Sust'āinable Molokai:** Contact Molokai Food Access Coordinator, Lori Pastrana, at :
lori@sustainablemolokai.org, (808) 658-0515
- **College of Tropical Agriculture and Human Resilience (CTAHR) Molokai**
Extension Office: Call Jennifer Hawkins or Kyle Franks at (808) 567-6929, or email them at jhawk@hawaii.edu, kefranks@hawaii.edu.

LĀNA'I:

- No information at this time. We will update this soon.

VOLUNTEER CLEAN-UP

Do you need volunteers to help with repairs to your farm or ranch? Contact the Maui County Department of Agriculture at (808) 270-8276, or email us at agriculture@mauicounty.gov, and we will help get the word out.

MORE INFORMATION ON DAMAGE SURVEYS SEE NEXT PAGE.

Agriculture Stewardship Hawai'i's ("Ag Stew") Agricultural Disaster Impact Report Survey.

Go to <https://report.agstewardshiphawaii.org/> and click "report impacts." If you would prefer to provide this information over the phone, please call (808) 622-9026.

How your data will be used:

- Your report is added to aggregated, anonymous statewide data — no personal details are shared publicly
- Organizations you selected above will receive your report so they can assist you directly
- Ag Stewardship Hawai'i Farmer Helpdesk may use your report to help you find programs and funding
- Aggregated data may be shared with government agencies (USDA, HDAB) to support disaster declarations

The screenshot shows a web-based survey form titled "Report Agricultural Disaster Impact". It includes sections for "Report Agricultural Disaster Impact", "Section 1: Emergency Help", "Section 2: Farm Identification", "Section 3: Disaster Impact Assessment", and "Section 4: Recovery & Funding". The form contains various input fields, checkboxes, and dropdown menus for providing detailed information about the disaster impact on the farm.

Maui Emergency Management Agency's (MEMA) Damage Survey:

<https://crisistrack.juvar.com/public/mauiHI/request.html>.

Damage reports after severe weather events help the County of Maui document impacts, prioritize response efforts and support requests for state and federal recovery funding for the overall disaster. Input from the community helps set up services and programs that meet the different needs of impacted areas.

The screenshot shows a web-based damage survey form titled "Damage Survey". It includes sections for "Location", "Description", and "Contact Information". The form contains various input fields, checkboxes, and dropdown menus for providing detailed information about the damage and the affected area.

MORE INFORMATION ON HDAB DISASTER LOAN PROGRAM

On March 24, 2026, The Hawaii Board of Agriculture approved an emergency agricultural loan program to assist Hawaii's farmers and ranchers statewide suffering damage from the Kona Lows that hit the island's beginning March 13th.

The Board approved the following parameters:

1. Maximum loan amount: \$100,000.00
2. Terms to be determined on a case-by-case basis as needed. Consideration will be based on historical farm performance and projected cash flow based on reasonable assumptions of revenue and expenses.
3. Interest rate: 3%
4. The credit elsewhere requirement shall be waived for loans \$50,000 or less. Loans above \$50,000 shall require one (1) credit denial.
5. The 3-year residency requirement for U.S. Citizens and permanent aliens shall not apply.
6. Collateral requirements may be modified or waived, as necessary, on a case-by-case basis. Wherever possible, the provisions of Section 155-11, Security for Loans, should be followed.
7. Emergency Loan Applications can be accepted until September 30, 2026.

For agribusinesses and farmers needing loans of \$50,000 or less, micro-loans involving less paperwork and swifter processing are available.

Thank you!

Jillian Scheibe

Ag Loan Officer

808-323-7591

jillian.c.scheibe@hawaii.gov

State of Hawaii Department of Agriculture and Biosecurity

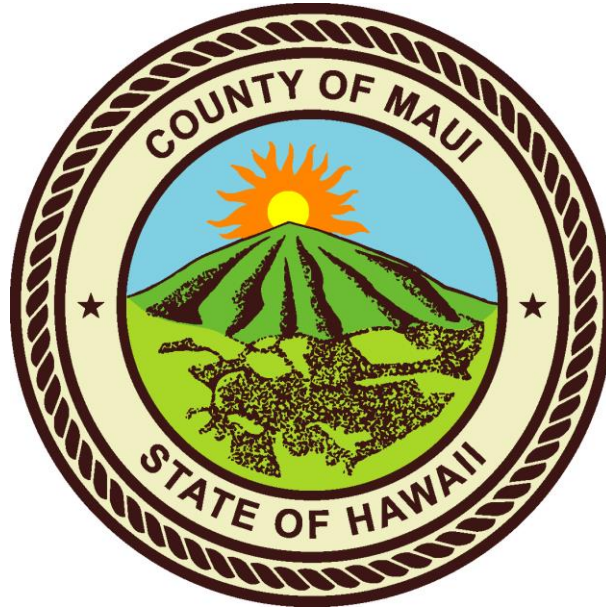
Agricultural Loan Division

P.O. Box 226

Captain Cook, Hawaii 96704

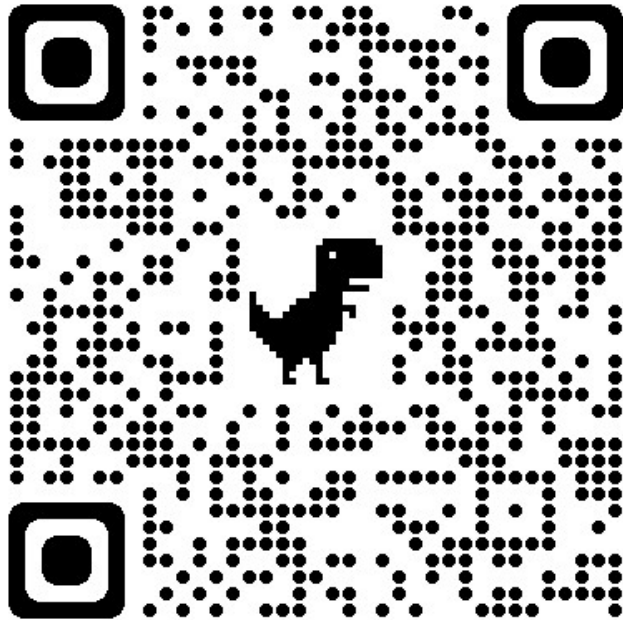
PLAN AREA	LEAD AGENCY	REF.	COMMUNITY PLANS IMPLEMENTING ACTIONS	Not Begun
West Maui Community Plan (2022)	PLANNING	72	Obtain funding, design, and build a canoe hale structure for storage of canoes at the proposed Hanaka'ō'ō Beach mauka expansion.	
West Maui Community Plan (2022)	PLANNING	74	Initiate changes in zoning based on community plan designations for growth areas identified as high priority for 100 percent affordable housing.	
West Maui Community Plan (2022)	PLANNING	76	Identify and propose amendments to remove existing barriers in laws, rules, and processes that prohibit the construction of safe, sanitary, and affordable on-farm employee housing for farmworkers, with special consideration given to non-permanent, modular housing solutions.	
West Maui Community Plan (2022)	PUBLIC WORKS	81	Propose amendments to the building, fire, and zoning codes that promote resilient structures and communities.	
West Maui Community Plan (2022)	PUBLIC WORKS	83	Update the Lāhainā Town Drainage Master Plan with consideration given to Low Impact Development solutions, and develop an implementation plan.	
West Maui Community Plan (2022)	PUBLIC WORKS	90	Propose amendments to the Maui County Code to require permeable surfaces or other Low Impact Development standards to be used in new or redeveloped parking lots and streets, to mitigate runoff and help with groundwater recharge.	
West Maui Community Plan (2022)	PUBLIC WORKS	95	Promote travel demand management strategies such as staggered start times and Intelligent Transportation Systems (ITS) message signs to reduce congestion on Honoapi'īlani Highway and the Lāhainā Bypass.	
West Maui Community Plan (2022)	PUBLIC WORKS	102	Establish a short-term plan to protect key roadways from sea level rise and storm events, to provide alternatives that prevent shoreline armoring as the default emergency action.	
West Maui Community Plan (2022)	PUBLIC WORKS	105	Install street signs identifying traditional Hawaiian street names in County Historic District No. 1.	
West Maui Community Plan (2022)	PUBLIC WORKS	110	Work with appropriate agencies to develop a veterans' cemetery and a memorial park in West Maui.	
West Maui Community Plan (2022)	TRANSPORTATION	113	Provide a frequent direct Maui Bus route between Kahului Airport to West Maui and hotels. Increase the baggage allowance on these buses and provide appropriate storage to ensure safety.	
West Maui Community Plan (2022)	TRANSPORTATION	115	Identify a corridor for future multimodal transportation use extending from existing developed areas in Kapalua to Central Maui, and amend the West Maui Community Plan to include policies and actions that will ensure this corridor remains undeveloped until it is ready to be developed as a multimodal transportation corridor.	
				211

Maui County Agricultural Resource Directory



County of Maui Department of Agriculture

Mailing Address: 200 S. High St., Wailuku, HI 96793
Phone: (808) 270-8276 Email: agriculture@mauicounty.gov
Website: <https://www.mauicounty.gov/2473/Department-of-Agriculture>



**SCAN QR Code to be added to the
Maui County Department of Agriculture
Email list to receive notifications of
opportunities and information**

TABLE OF CONTENTS

Business Planning	4
Certifications (Farm & Food Safety)	5
Certifications (Licenses, Permits)	6
Commercial Kitchens	8
Disaster Relief - Farm & Ranch Businesses	8
Food Assistance & Human Concerns	10
Disaster Relief - Wellbeing	13
Education & Outreach	14
Financial Support - Grants	16
Financial Support - Loans	17
Financial Support - Incentives	18
Food & Health Safety	19
Land And Soil Related.....	19
Equipment & Supplies	22
Farmers Markets	24
Food Hubs & Aggregators	26
Pest Management	27
Organizations	28
Slaughterhouses	35
Water Management	36

BUSINESS PLANNING

GoFarm Hawai'i, Agri-Tourism Compliance and Planning Information

<https://gofarmhawaii.org/gofarm-business-services/>

Email: info@gofarmhawaii.org

- The following link about agritourism compliance guidelines
<https://gofarmhawaii.org/agritourism-resources/>
- August 4, 2020 Hawai'i Tourism Authority Maui County Compliance and Planning Slide show presentation <https://gofarmhawaii.org/wp-content/uploads/2020/08/Agri-Tourism-Maui-County.pdf>

In addition to the Beginning Farmer Training Program, new farmers learn basic farm planning, business management and receive ag business consulting and services.

Hawai'i Small Business Development Center

<https://www.hisbdc.org/>

Maui Research & Technology Center

590 Lipoa Pkwy. Suite 264 Kihei, HI 96753-6913

Phone: (808) 875-5990 Email: library@hisbdc.org

No cost assistance for entrepreneurs & small businesses.

Maui County Office of Economic Development (OED)

<https://www.mauicounty.gov/141/Office-Of-Economic-Development>

2200 Main St. Suite 305, Wailuku, HI 96793

Phone: (808) 270-7710 Email: economic.development@mauicounty.gov

The OED works in partnership with the community, business and government sectors to promote agriculture industry in partnership with agricultural organizations, the community, business and government sectors and assists in the attraction, development and expansion of new businesses and events that will in turn provide new jobs for our community.

- Business Assistance <https://www.medb.org/business-assistance/>
- Education to Workforce <https://www.medb.org/education-to-workforce/>
- Community Development <https://www.medb.org/community-development/>

Maui Economic Development Board

<https://www.medb.org>

1305 North Holocono St., Suite 1 Kihei, HI 96753

Phone: (808) 875-2300

A membership of businesses and community leaders that work with government and educators on developing a diversified and sustainable economy in Maui County through business assistance, workforce education, and community engagement.

Maui Economic Opportunity (MEO)

<https://www.meoinc.org>

The Harry and Jeanette Weinberg Center

99 Mahalani St., Wailuku, HI 96793

Phone: (808) 249-2990

Through their business development center, MEO offers Core Four business planning courses, and financial literacy training. For more services, see grants, finances and workforce development sections.

USDA Risk Management Agency

<https://www.rma.usda.gov/>

Phone: (530) 792-5870 Email: cfoca@rma.usda.gov

Resources on crop insurance and managing farm risks

US Small Business Administration (SBA)

<https://www.sba.gov/district/hawaii>

500 Ala Moana Blvd. Suite 1-306, Honolulu, HI 96813

Phone: (808) 541-2990 Email: hawaiiigeneral@sba.gov

SBA services include funding programs, counseling, federal contracting certifications, and disaster recovery.

CERTIFICATIONS (FARM & FOOD SAFETY)

Hawai'i Produce Safety Program

Phone: (808) 832-0685 Email: Joey.K.Ooka@hawaii.gov

<http://www.hifarmsafe.org/>

The Hawai'i Department of Agriculture's statewide implementation of the Hawaii Produce Safety Program is part of the FDA Food Safety Modernization Act (FSMA), the most sweeping reform of our food safety laws in more than 70 years. It aims to ensure the U.S. food supply is safe by shifting the focus from responding to contamination to preventing it when the produce is being grown, harvested, handled and stored on the farm.

This program provides outreach and education to Hawai'i produce growers who will be impacted by FSMA. If you are a producer with questions or concerns about FSMA or produce safety, we want to hear from you!

Hawai'i State Department of Health Food Safety Permits Applications

<https://health.hawaii.gov/san/permit-applications/>

54 High St. Room 300, Wailuku, HI 96793

Phone: (808) 984-8230

Food Safety Branch Permit applications for Food Establishment, Special Event Food Establishment, Special Event Permit Guidelines, and Support Kitchen Use Agreement.

North Shore Economic Vitality Partnership

<https://nsevp.org/group-gap/>

Phone: (808) 343-8196 Email: info@nsevp.org

Offering Group Good Agriculture Practices (GroupGAP) program Certification through cohort opportunities assists farmers through development of individual farm food safety plans, food safety training, and farm audits. This enables farmers to become Harmonized GAP Certified.

Produce Safety Alliance (PSA) Grower Training Course

<https://cals.cornell.edu/produce-safety-alliance/training/grower-training-course>

The Produce Safety Alliance (PSA) is a collaboration between Cornell University, FDA, and USDA that prepares fresh produce growers to meet the regulatory requirements included in the United States Food and Drug Administration's Food Safety Modernization Act (FSMA) Produce Safety Rule and learn Good Agricultural Practices (GAPs), and co-management of natural resources and food safety. In person or online courses are available for a nominal fee.

State Food Safety Hawai'i Food Handlers Card

<https://www.statefoodsafety.com/food-handler/hawaii-courses>

Self-paced online program that provides food handlers with the information they need to handle food safely. An accredited training program is approved for use in the state of Hawai'i by the Department of Health.

University of Hawai'i at Mānoa College of Tropical Agriculture and Human Resources (CTAHR) Farm Food Safety

<https://manoa.hawaii.edu/ctahr/farmfoodsafety/>

Molokai Contact: Jennifer Hawkins Email: hawkinsj@ctahr.hawaii.edu Phone: (808) 567-6935

Maui and Lāna'i Contact: Kylie Tavares Email: kylielw@hawaii.edu Phone: (808) 244-3242 Ext: 224

CTAHR Farm Food Safety Outreach works with growers to provide the best product possible. Good agricultural practices (GAP) focus on the sources of human and animal pathogens on a farm. Contact us for resources on how to write your food safety plan and for upcoming educational opportunities where you can learn how you can be a proud provider of safe, fresh produce that you and your family will pride yourselves in. We're also part of the FDA-USDA-Cornell University-Land Grant Produce Safety Alliance.

CERTIFICATIONS (LICENSES, PERMITS)

Farmers Market Dealers License Application

<https://hdoa.hawaii.gov/qad/files/2012/12/qad-dl-2a.pdf>

1851 Auiki St., Honolulu, HI 96819-3100

Phone: (808) 873-3554

Hawai'i Department of Agriculture, Commodities Branch

<https://hdoa.hawaii.gov/qad/commodities-branch/>

1851 Auiki St., Honolulu, HI 96819-3100

Phone: (808) 873-3554

Assists in the development of agricultural industries through quality assurance of agricultural commodities; licensing of dealers in agricultural products.

- Food Safety Public Service Announcements
- Good Agricultural Practices (GAP) videos
- Food Safety Modernization Act (FSMA)
- Food Safety Certification Service
- Organic Food Production Tax Credit
- Hawai'i Commodities Regulations
- Agricultural Theft
- **Hawai'i Produce Safety and Audit Service** <https://www.hifarmsafe.org>

Hawai'i Department of Agriculture Hawai'i Pesticide Applicator Certification/Recertification

<https://hdoa.hawaii.gov/pi/pest/pesticide-applicator-certificationrecertification-2/>

635 Mua St., Kahului, HI 96732-2322

Phone: (808) 973-9409; (808) 873-3078 Email: HDOA.PESTED@hawaii.gov

Information on Continuing Education Training classes and credit hour requirements for Pesticide Applicator Certification /Recertification and Worker Protection Standard Trainings, examinations for certification of private pesticide applicators and dealer representatives to sell restricted use pesticides; guidance on pesticide use.

- **Pesticides Education Portal**

<https://inforps-dp.hawaii.gov/PesticidesEducation/#/homepage>

Portal for scheduling pesticide application certification/recertification exams.

Hawai'i Department of Land and Natural Resources Division of Aquatic Resources (DLNR-DAR)

<https://dlnr.hawaii.gov/dar/>

Phone: (808) 587-0100 Email: DLNR.aquatics@hawaii.gov

The mission of the Division of Aquatic Resources is to work with the people of Hawai'i to manage, conserve and restore the state's unique aquatic resources and ecosystems for present and future generations.

Find information on fishing licenses and permits here <https://dlnr.hawaii.gov/dar/licenses-permits/>.

Hawai'i Department of Land and Natural Resources Division of Forestry and Wildlife

<https://dlnr.hawaii.gov/dofaw/permits/>, <https://dlnr.hawaii.gov/recreation/hunting/>

Maui Branch: 685 Haleakala Hwy, Kahului, HI, 96732 Phone: (808) 984-8100

Molokai Branch: Phone: (808) 553-1745

Lāna'i Branch: Phone: (808) 565-7916

The Division of Forestry and Wildlife protects, manages, and restores natural and cultural resources in collaboration with the people of Hawai'i. Their programs include forestry and forest health, Nā Ala Hele trails & access, native ecosystems protection & management, and wildlife, which includes recreational hunting and permits. For more information on Permit guidelines and online applications visit

<https://dlnr.hawaii.gov/dofaw/permits/>. For hunting information, licenses, and tags visit

<https://dlnr.hawaii.gov/recreation/hunting/>

USDA Organic Certification and Accreditation

<https://www.ams.usda.gov/services/organic-certification>

77 Hookele St. Suite 201, Kahului, HI 96732

Phone: (808) 871-5500 ext. 2

Organic Certification allows a farm or processing facility to sell, label, and represent their products as organic. The organic brand provides consumers with more choices in the marketplace. The USDA protects consumer options by protecting the organic seal. Organic Accreditation authorizes private, foreign, or state organizations to certify farms or processing facilities. Certifying agents are accredited by the USDA and are responsible for making sure USDA organic products meet all organic standards.

- **USDA Organic Certification Cost Share Program** <https://www.fsa.usda.gov/programs-and-services/occp/index>

COMMERCIAL KITCHENS

Heritage Hall

<https://www.mauiheritagehall.org/>

401 Baldwin Avenue, Suite 201, Paia, HI 96779

Email: hheritagehall@hawaii.rr.com Phone : (808) 243-0065

Heritage Hall's certified kitchen is well equipped and available for rent starting at \$25 per hour. Call to schedule kitchen use. Locally owned and Native Hawaiian businesses are prioritized for scheduling purposes.

Lanikeha Commercial Kitchen

<https://www.molokaihfa.com/lanikeha-community-center>

2200 Farrington Ave, Ho'olehua, HI 96729

Email: mcsc@molokai.org Phone: (808) 553-3244

The Lanikeha Kitchen is a DOH-certified facility where food products can be prepared for commercial sale. Current users manufacture products such as poi, sweet potato chips, honey, and basil pesto.

Maui Food Innovation Center

maui.hawaii.edu/foodinnovation/

310 Kaahumanu Ave - Laulima Bldg Rm 106, , Kahului, HI 96732, USA

Email: uhmcmfic@hawaii.edu Phone Number: 808-984-3850

The Maui Food Innovation Center (MFIC) is Hawai'i's first college-based business incubator which serves to foster and accelerate the growth and education of agribusinesses and food entrepreneurs looking to scale up their food business.

DISASTER RELIEF - FARM & RANCH BUSINESSES

Disaster Unemployment Assistance

<https://labor.hawaii.gov/ui/assistance-programs/disaster-unemployment-assistance-dua/>

54 South High St. Rm 201 Wailuku, HI 96793

Phone: (808) 984-8400 Email: dlii.ui.mau@hawaii.gov

Provides temporary benefits to individuals whose employment or self-employment has been lost or interrupted as a direct result of a major disaster.

Hawai'i Department of Agriculture, Agricultural Loan Division

<https://hdoa.hawaii.gov/agl/>

Phone: (808) 973-9595 Email: hdoamd@hawaii.gov

Emergency agricultural loan programs available to assist Maui farmers and ranchers who experienced damage from high winds and wildfires providing assistance to qualified farmers affected by the economic impacts as a result of the overpopulation of Axis Deer in the County of Maui.

Maui Humane Society

<https://www.mauihumanesociety.org/>

Phone: (808) 877-3680 Email: Info@MauiHumaneSociety.org

Those directly and indirectly affected by the fires can receive essential pet and livestock needs.

State of Hawai'i Unemployment Insurance:

<https://labor.hawaii.gov/ui/>

54 South High St. Rm 201 Wailuku, HI 96793

Phone: (808) 984-8400 Email: dlir.ui.maui@hawaii.gov

Through a state type of provided insurance, temporary compensation on a weekly basis is made to individuals that lose their job and meet certain eligibility requirements.

USDA Farm Service Agency, Disaster Assistance Program

<https://www.fsa.usda.gov/programs-and-services/disaster-assistance-program/index>

77 Hookele St. Suite 201 Kahului, HI 96732

Phone: (808) 871-5500 Ext. 2

Offers a variety of programs to help farmers, ranchers, communities, and businesses that have been hard hit by natural disaster events. Contact agency for specific programs.

- Livestock Assistance
 - [Emergency Assistance for Livestock, Honey Bees, and Farm-raised Fish \(ELAP\)](#)
- Farmland Damage
 - [Emergency Conservation Program \(ECP\)](#)
 - [Emergency Forest Restoration Program \(EFRP\)](#)
- Crop Losses
 - [Noninsured Crop Disaster Assistance Program \(NAP\)](#)
 - [Tree Assistance Program \(TAP\)](#)

USDA Farm Service Agency, Disaster Debt Set-Aside Program

<https://www.fsa.usda.gov/Assets/USDA-FSA-Public/usdfiles/FactSheets/2019/disaster-set-aside-program-factsheet-19.pdf>

When Farm Service Agency (FSA) borrowers who are located in designated disaster areas or contiguous (adjoining) counties are unable to make their scheduled payments on any FSA debt, FSA is authorized to consider set-aside of some payments to allow the operation to continue.

USDA Farm Service Agency, Emergency Farm Loan Program <https://www.fsa.usda.gov/programs-and-services/farm-loan-programs/emergency-farm-loans/index>

Maui FSA Service Center

77 Hookele St. Suite 201, Kahului, HI 96732

Phone: (808) 871-5500 Ext. 2

Eligible farmers apply for emergency loans to rebuild and recover from sustained losses.

USDA Natural Resources Conservation Service

<https://www.fsa.usda.gov/programs-and-services/disaster-assistance-program/index>

77 Hookele St. Suite 221, Kahului, HI 96732

Phone: (808) 871-5500 Ext. 3

Offers a variety of natural resources conservation programs to reduce erosion, enhance water supplies, improve water quality, increase wildlife habitat, and reduce damage caused by floods and other natural disasters.

FOOD ASSISTANCE & HUMAN CONCERNS

DA BUX

<https://dabux.org/>

Phone: (808) 437-3044 Email: DABUX@hawaiifoodbasket.org

A program of The Food Basket in partnership with the Hawai'i Good Food Alliance. Da Bux access cards get you 50% off local produce at participating grocery stores and food hubs.

(Only SNAP-EBT cardholders are eligible to receive)

Feed My Sheep

<http://www.feedmysheepmaui.com/index.php/mobile-food-distributions>

31 N Market St, Wailuku, HI 96793

Phone: (808) 872-9100

Mobile food distribution program regularly in Hana, Kihei, Wailuku, Kahului. Must meet financial requirements. Always accepting volunteers.

FEMA Emergency Response Resources

<https://www.fema.gov/locations/hawaii#emergency-response-resources>

FEMA Helpline: 1-800-621-3362

Information on local disaster recovery centers, fact sheets, FEMA contacts and other resources for Hawaii

FEMA National Response Framework

<https://www.fema.gov/emergency-managers/national-preparedness/frameworks/response>

A guide to how the nation responds to all types of disasters and emergencies identified in the National Incident Management Systems which aligns key roles and responsibilities and includes emergency support functions and support annexes.

- Emergency Support Functions <https://www.aphis.usda.gov/aphis/ourfocus/emergencyresponse/esf11>

Hawai'i Community Foundation-Maui Strong Fund

<https://www.hawaiicomunityfoundation.org/maui-strong>

Phone: (808) 242-6184 Email: donorservices@hcf-hawaii.org

Non-profits may be eligible for grants through Hawai'i Community Foundation to use on rapid response and recovery programs for the devastating wildfires on Maui.

Hawai'i Fire Relief Housing Program

<https://dbedt.hawaii.gov/hhfdc/hawaii-fire-relief-housing-program/>

Phone: (808) 587-0469 Email: hhfdcfireliefhousing@hawaii.gov

Information for property owners with available housing and displaced residents in need of housing.

Maui County Emergency Management Agency, MEMA Alerts Sign-Up

<https://www.mauicounty.gov/70/Emergency-Management-Agency>

200 S High St. Kalana O Maui Bldg, 1st Floor, Wailuku, HI 96793

Phone: (808) 270-7285 Email: emergency.management@mauicounty.gov

Maui Food Bank

<https://mauifoodbank.org>

760 Kolu St. Wailuku, HI 96793

Phone: (808) 243-9500 Email: info@mauifoodbank.org

Entirely solar powered, the Maui Food Bank collects donated foods, value-added items and supplies at wholesale prices or less and purchases from farmers and ranchers too. Anyone in need of hunger relief can visit the food bank at a distribution location.

Maui Nui Strong

<https://www.mauistrong.info>

Maui Nui Strong is provided by the County of Maui to help connect our residents, businesses, and visitors to resources and support from the effects of wildfires and provides advisories.

Maui United Way

<https://mauiunitedway.org>

Phone: (808) 244.8787 Email: info@mauiunitedway.org

Maui United Way is providing Emergency Financial Assistance to adults, and Maui Fire Disaster Relief Nonprofit Funding for local nonprofits who directly suffered a loss or damage and/or lived in the fire impact zone.

Project Vision

<https://www.projectvisionhawaii.org/snap-enrollment>

Phone: (808) 201-3937 Email: info@projectvisionhawaii.org

Project Vision is Maui County's SNAP Outreach Provider and can provide support in completing paperwork, accessing an application and answering questions related to the Supplemental Nutrition Assistance Program (SNAP).

Red Cross Response to Hawai'i Wildfires

<https://www.redcross.org/local/hawaii/get-help/hawaii-wildfires-response-.html>

Phone: 1-800-RED-CROSS

Anyone who has been affected by the wildfire is welcome to stop by a Red Cross shelter, where they can find hot meals, health services, and other relief supplies.

Supplemental Nutrition Assistance Program (SNAP)

<https://humanservices.hawaii.gov/bessd/snap/>

54 High St. #125, Wailuku, HI 96793

Phone: (808) 984-8300

Provides crucial food and nutritional support to qualifying low-income individuals, households, and those making the transition from welfare to self-sufficiency.

USDA Commodity Supplemental Food Program

<https://www.fns.usda.gov/csfp/commodity-supplemental-food-program>

830 Punchbowl St. Room 420, Honolulu, HI 96813

Phone: (808) 586-8675

Authorized to operate in all 50 states, this program works to improve the health of low-income persons at least 60 years of age by supplementing their diets with nutritious USDA foods. Must be eligible based on income limits.

US Small Business Administration Disaster Loans (SBA)

[Hawai'i wildfires | U.S. Small Business Administration \(sba.gov\)](#)

[Fact Sheet \(sba.gov\)](#)

500 Ala Moana Boulevard Suite 1-306 Honolulu, HI 96813

Phone: (808) 541-2990

Email: [hawaii@general@sba.gov](mailto:hawaii@general.sba.gov)

Low interest disaster loans available to homeowners, renters, nonprofits, and businesses of all sizes affected by the Hawai'i wildfires.

- Home Disaster Loans – Loans to homeowners or renters to repair or replace disaster-damaged real estate and personal property, including automobiles.
- Business Physical Disaster Loans – Loans to businesses to repair or replace disaster-damaged property owned by the business, including real estate, inventories, supplies, machinery and equipment.
- Economic Injury Disaster Loans (EIDL) – Working capital loans to help small businesses, and most private, non-profit organizations of all sizes meet their ordinary and necessary financial obligations that cannot be met as a direct result of the disaster.

Volunteering Sign Up for Maui County Service

[7546a4adbcbd451ba2daee8e918816ea](#)

Women, Infants and Children Nutrition Support (WIC)

<https://health.hawaii.gov/wic/>

781 Kolu St. Room A-1 Wailuku, HI 96793

Phone: (808) 984-8225

Provides pregnant, breastfeeding, postpartum women, infants and children under 5 with nourishing supplemental foods, and nutrition education. WIC participants must meet income guidelines and have a medical or nutritional risk.

DISASTER RELIEF - WELLBEING

Better Help Therapy Services

<https://www.betterhelp.com>

Phone: 888-688-9296

- 1-month free for HFUU members via NFU <https://www.betterhelp.com/nfu/>

Hawai'i Cares 988

<https://hicares.hawaii.gov/>

Call or Text: 988

A 24/7, free support service for help with crisis, mental health, and substance abuse.

Hawai'i Medical Service Association (HMSA) Hotline

<https://www.hmsa.com>

Phone: 1 (808) 580-6934

Kaiser Permanente Mental Health Services:

<https://healthy.kaiserpermanente.org/hawaii/alerts/p2/maui-wildfire-updates>

Phone: 1 (833) 833-3333

Maui Community Mental Health Centers (CMHC)

<https://health.hawaii.gov/maui/community-mental-health-centers-cmhc/>

Offering crisis mental health services to those experiencing emotional or psychological distress because of the wildfires.

Phone: (808) 984-2150

Email: mauiwellness@doh.hawaii.gov

Seeds of Wellbeing

<https://manoa.hawaii.edu/sow-well/>

Phone: (808) 244-3242

Offering stress relief workshops and support groups. Farmers can get vouchers for three free virtual therapy sessions by contacting Seeds of Wellbeing.

Substance Abuse and Mental Health Services Administration Disaster Distress Helpline

<https://www.samhsa.gov/find-help/disaster-distress-helpline>

Phone: 1 (800) 985-5590

Trained counselors available 24/7 to support survivors, family members, recovery workers, responders, and other individuals affected by a disaster.

Tips for Parents and Caregivers on Media Coverage of Traumatic Events

https://www.nctsn.org/sites/default/files/resources//tips_for_parents_media_coverage_of_traumatic_events.pdf

EDUCATION & OUTREACH

Farm Aid

<https://www.farmaid.org/about-us/>

Phone: (617) 354-2922

Email: info@farmaid.org

A Non-profit organization offering farmers resource network and a hotline to point you toward both local and national resources offering relief.

GoFarm Hawai'i Training Program

<https://gofarmhawaii.org/gofarm-training-program/>

Email: info@gofarmhawaii.org

GoFarm provides at a cost, a series of beginner farmer training programs. The Ag Business Team serves all islands with business planning, marketing, financial analysis, and other guidance.

Hawai'i Farmers Union United Farm Apprentice Mentoring Program (FAM)

<https://hfuuhi.org/foundation/projects/famprogram/>

The FAM program was created with the vision to empower the next generation of farmers with the knowledge, skills and abilities to be successful farmers here in Hawaii. The program accepts applications for their cohort in the fall of each year.

Hawai'i Master Food Preservers

<https://mfphawaii.org/>

Phone: (808) 443-8722

Email: mfphawaii@gmail.com

The Hawai'i Master Food Preservers is dedicated to the education and training of individuals in the discipline of food safety, food preservation science and the development of unique value-added products from locally grown and sourced produce.

Kupu 'Āina Corps

<https://www.kupuhawaii.org/aina/>

677 Ala Moana Blvd. Suite 1200, Honolulu, HI 96813

Phone: (808) 735-1221

Email: info@kupuhawaii.org

Kupu 'Āina Corps (KAC) is a workforce development initiative established through the State of Hawaii's legislation for a Green Jobs Youth Corps. This year-long program employs individuals seeking experience in Hawaii's environmental sector.

Maui Farmer Support Network

<https://mauifarmernetwork.com>

PO Box 1898, Makawao, HI 96768

Phone: (808) 866-8194

Email: mauifamilyfarmer@gmail.com

The Maui Farmer Support Network is an organization aiming to foster solidarity among family farmers and gardeners through engaging in integrative education, inclusive hands-on farm help days, and connection to others in our community committed to regenerative agricultural abundance.

Maui Food Technology Center

<https://mauifoodtechnology.org>

P.O. Box 901452, Kula, Maui, HI 96790

Phone: (808) 856-5986 Email: info@mauifoodtechnology.org

Provides education and opportunities for entrepreneurs seeking to earn a living through value-added products, agriculture, food and environmental sustainability, technology and economic diversification. Offerings of the following services:

- Food Industry Services <https://mauifoodtechnology.org/foodindustryservices>
- Value Added <https://mauifoodtechnology.org/value-added-products>
- Feeding Maui Nui <https://mauifoodtechnology.org/feeding-maui-nui>

STEMworks Ag Business & Technology Internship Program

<https://www.stemworkshawaii.org/aginternships>

Contact: Britney James, britney@medb.org

Through the STEMworks Ag Business & Technology Internship program, students in grades 9-12 and college undergraduates, will have the opportunity to gain experience in multiple industries within the Ag sector to find their interests, build their resume, and become career ready.

Sunny Savage

<https://sunnysavage.com/>

Email: support@sunnysavage.com

Education on wild food identification, foraging, harvesting and cooking.

UH Mānoa College of Tropical Agriculture and Human Resources, Maui County Extension Program

<http://www.ctahr.hawaii.edu/Maui/pages/Programs.aspx>

310 Kaahumanu Avenue, Bldg. 214, Kahului, HI, 96732

Phone: (808) 244-3242 Email: kahului@ctahr.hawaii.edu

County Agents cover topics in agriculture, home economics, family living, 4-H and other youth activities, nutrition, and health providing individual consultation and educational workshops. Educational materials are also available at the county extension office.

- **Emergency Response** <https://cms.ctahr.hawaii.edu/er>
The Threats to Agriculture Community page contains links Fire Planning Guides, Covid 19, Volcanic Emissions, Floods and Hurricanes.
- **Master Gardener Program** certifies volunteers in horticultural education for a fee. Volunteers provide educational outreach at events held on Maui, host plant clinics and plant sales, conduct workshops, plant and maintain educational gardens and answer gardening questions.
<https://cms.ctahr.hawaii.edu/uhtmprogram/Home/Maui>

UH Maui College, Agriculture & Natural Resources Program

<https://catalog.maui.hawaii.edu/agriculture-natural-resources>

310 W. Kaahumanu St., Kahului, HI 96732-1617

Phone: (808) 984s-3400

Provides instruction for those in need of training, retraining, or skills upgrading in the field of agriculture, and those wishing to obtain an Associate degree and certificates in agriculture & natural resources and wanting to transfer to a four-year college or university.

University of Hawai‘i Maui Food Innovation Center

<https://maui.hawaii.edu/foodinnovation>

310 W. Ka‘ahumanu Ave, Kahului, Hawai‘i 96732

Phone: (808) 984-3500 Email: uhmcmfic@hawaii.edu

UH Maui's Food Innovation Center helps local businesses create and market food products.

USDA Farmers

Beginner Farmer and Ranchers Assistance

<https://www.farmers.gov/your-business/beginning-farmers#support><https://www.farmers.gov/your-business/beginning-farmers#support>

USDA helps beginning farmers or ranchers, anyone who has operated a farm or ranch for less than ten years, in starting their operations through a variety of programs and services.

FINANCIAL SUPPORT - GRANTS

Hawai‘i Department of Agriculture, Commodities Branch, Quality Assurance Division

Agricultural Food Safety Certification Costs Grant

<https://hdoa-dev.hawaii.gov/qad/commodities-branch/food-safety-information/>

1851 Auiki St., Honolulu, HI 96819

Phone: (808) 832-0705

Provide grant funds to assist farmers or ranchers in meeting costs of complying with the U.S. Food and Drug Administration (FDA) Food Safety Modernization Act (FSMA), FDA regulations and state food safety laws.

- [Food Safety Certification Costs Grant Information sheet](#)

Hawai‘i Organic Farming Association Grants

<https://hawaiiorganic.org/resources/grants-funding/>

Membership of local organic farmers, distributors, retailers, students, and consumers supporting and promoting organic agriculture in Hawaii. HOFA provides education about organic farming and sustainability in Hawaii.

Maui County Department of Agriculture

<https://www.mauicounty.gov/2726/Agriculture-Grants>

200 S. High St. Wailuku, HI 96793

Phone: (808) 270-8276 Email: agriculture@mauicounty.gov

The newly created grants division provides grant readiness workshops, individualized technical assistance in grant writing and manages grant contracts the Department has awarded.

Maui County Environmental Management, Environmental Protection & Sustainability Division

<https://mauicounty.gov/1710/Recycling-Grants-Program>

2145 Wells St., Wailuku, HI 96793

Phone: (808) 270-7631

Recycling Grants and Green Grants awards funding to businesses, non-profits and individuals

FINANCIAL SUPPORT - LOANS

American Ag Credit

Agribusiness Loans and Capital Markets - American AgCredit (agloan.com)

99-860 Iwaena St., Suite A, Aiea, HI 96701

Phone: (808) 836-8009

Provides loans and other financial services to agricultural and rural customers in Hawaii.

Hawai'i Department of Agriculture, Agricultural Loan Division

Agricultural Loan Division (hawaii.gov)

Phone: (808) 973-9595 Email: hdoamd@hawaii.gov

The HDOA administers the Agricultural Loan Program and the Aquaculture Loan Program with various farmer loans and manufacturing loans.

Hawai'i Department of Health

1428 South King St., Honolulu, HI 96814

Phone: (808) 984-2400, Ext. 39460

Offers offers a variety of programs to promote agricultural and aquaculture development of the State by providing credit at reasonable rates and terms to qualifying individuals or entities. Contact agency for specific programs.

- Aquaculture Loans
- Food Manufacturing Loans
- New Farmer Loans
- Qualified Farmer Loans
- Part-time Farmer Loans
- Emergency Loan Program for Axis Deer
- Alternative Energy Loan Program

Office of Hawaiian Affairs (OHA)

560 N. Nimitz Hwy. #200, Honolulu, HI 96817

Phone: (808) 594-1835

Offering a variety of business loans to Native Hawaiians for business and disaster relief. A few are listed below:

- Disaster Relief Loans
- Hua Kanu Business Loan
- Mahi 'Ai Business Loan

USDA Farm Service Agency

<https://www.fsa.usda.gov/programs-and-services/disaster-assistance-program/index>

77 Hookele St. Suite 201 Kahului, HI 96732

Phone: (808) 871-5500, Ext. 2

Loans to start, expand or maintain a family farm.

USDA Rural Development

<https://www.rd.usda.gov/hi>

77 Hookele St. Suite 201 Kahului, HI 96732

Phone: (808) 871-5500, Ext.4

Agricultural loan and grants for individuals and businesses, value-added producers, infrastructure, business development and water systems in rural communities.

US Small Business Administration

<https://www.sba.gov/funding-programs/loans>

Small businesses can get loans from lenders guaranteed by the Small Business Administration.

FINANCIAL SUPPORT - INCENTIVES

Hawai'i Department of Agriculture, Important Agricultural Land Tax Credit (IAL)

<https://hdoa.hawaii.gov/important-ag-lands-ial/ial-tax-credit-information/>

Mailing address: 1428 S. King St., Honolulu, HI 96814, Attn: Planning Office

Hawai'i Department of Agriculture, Organic Foods Production Tax Credit

<https://hdoa.hawaii.gov/chair/new-agriculture-initiatives/organic-foods-production-tax-credit/>

Mailing Address: 1851 Auiki St. Attn: Organic Tax, Honolulu, HI 96819

Maui County Department of Finance

110 'Ala'ihī St., Kahului, HI 96732

Phone: (808) 270-7295

Contact the Department of Finance to receive agricultural rates for real property tax. See the application below:

- [Real Property Tax Agriculture Rate Form](#)

Maui County Department of Public Works, Development Services Administration

<https://www.mauicounty.gov/558/Development-Services-Administration>

110 'Ala'ihī St., Kahului, HI 96732

Phone: (808) 270-7250

The DSA administers the County's subdivision, building, electrical, plumbing, grading, and other construction related ordinances. See form below for more information on agricultural structures.

- [Agricultural Structures Building Permit Exemption](#)

Maui County Department of Water Supply

<https://www.mauicounty.gov/126/Department-of-Water-Supply>

200 S High St #5, Wailuku, HI 96793

Phone: (808) 270-7816

See form below for agricultural reduced water rates.

- [Special Agricultural Water Rates Application Form](#)

FOOD & HEALTH SAFETY

State of Hawai‘i Department of Health, Wailuku State Office Building Environmental Protection and Health Services

<https://health.hawaii.gov/about/>

54 High St., Room 300, Wailuku, HI 96793

Phone: (808) 586-4400

- Food Safety Branch (808) 984-8230
- Food and Drug (808) 984-8233
- Wastewater (808) 984-8232

Lahaina Comprehensive Health Center

1830 Honoapi‘ilani Hwy., Room #3, Lahaina, HI 96761

- Clean Air (808) 662-4005
- Clean Water (808) 662-4044

Molokai, Food Safety Branch

65 Makaena St., Kaunakakai, Hawai‘i 96748

- Food Safety Branch (808) 984-8230

LAND AND SOIL RELATED

The Hawai‘i Cover Crop Handbook

<https://oahurcd.org/covercrops/>

Produced by O‘ahu Resource Conservation & Development Council focusing on three cover crop species, oats, buckwheat and sunn hemp. Handbook is also available in Ilokano, Tagalog, Korean, Khmer and Mandarin languages.

Hawai‘i State Department of Agriculture, Ag Resource Management Division, Agricultural Parks Program

<https://hdoa.hawaii.gov/arm/agricultural-parks/>

1428 South King St., Honolulu, Hi 96814

Phone: (808) 973-9560

The States Agricultural Parks program makes land available to small farmers at reasonable cost with long-term tenure. The major objective of this program is to assist people who are interested in leasing farm land for ventures by providing irrigation water, reasonably priced farm land with infrastructure and facilities to encourage competition within the industry.

Hawai'i State Department of Health, Clean Air Branch

Agricultural Burn Permit

<https://health.hawaii.gov/cab/permit-application-forms/>

2827 Waimano Home Road, #130 Pearl City, HI 96782

Maui Phone: (808) 984-2400 Molokai & Lanai Phone: (800) 468-4644

An open outdoor burn or fire emits pollutants directly into ambient air. Open burning activities require an Agricultural Burning Permit (AGP).

Mana Microbes Farm Curbside Composting Services

<https://manamicrobesfarms.com/product/curbside-composting-copy-3/>

Phone: (808) 868-6619 Email: info@manamicrobesfarms.com

A Family run weekly food waste collection service in Kihei, Kula, Makawao, and Pukalani for making high quality compost through vermicomposting.

Maui County Department of Agriculture

<https://www.mauicounty.gov/2473/Department-of-Agriculture>

Phone: (808) 270-8276 Email: agriculture@mauicounty.gov

The County of Maui's Department of Agriculture will support the development and continued management of a sustainable regional agricultural system for Maui County, to promote resident and ecosystem health and well-being and create a thriving circular agro-economic system that can be a model for the rest of the world.

Maui County Department of Environmental Management, Integrated Solid Waste Management

<https://www.mauicounty.gov/DocumentCenter/View/4493/Maui-ISWMP-Chapter-9-FINAL---Organics-2-17-09?bidId=>

Provides a brief review of composting processes, legislation, Maui activities and alternatives for the County. Also, summarizes organic waste operations, both public and private, occurring in the County.

Maui County Department of Planning, Code of Ordinance, Title 19 ZONING, Article II-Comprehensive Zoning Provisions, Chapter 19.3A-AGRICULTURAL DISTRICTS

2200 Main St., One Main Plaza, Wailuku, HI 96793

Phone: (808) 270-7735

Agricultural District definition, purpose, criteria, standards, permitted uses, special uses, agricultural parks and agricultural leases.

[Chapter 19.30A - AGRICULTURAL DISTRICT | Code of Ordinances | County of Maui, HI | Municode Library](#)

Maui County Department of Planning, Long Range Planning Section, Maui County General Plan 2030, Chapter 7 LAND USE

<https://www.mauicounty.gov/DocumentCenter/View/84682/Chapter-7?bidId=>

2200 Main St., One Main Plaza, Wailuku, HI 96793

Phone: (808) 270-7735

The County General Plan 2030 is a long-term, comprehensive blueprint for the physical, economic, environmental development and cultural identity of the county.

Maui County Department of Planning, Zoning Administration and Enforcement Division

<https://www.mauicounty.gov/121/Planning-Department>

2200 Main St. One Main Plaza, Suite 315 Wailuku, HI 96793

Phone: (808) 270-7735, Fax: (808) 270-7634 Email: planning@mauicounty.gov

Administers the enforcement of State and County land use laws, rules, codes, regulations, and the general and community plans. Serves as primary departmental advisory and information branch regarding the interpretation and application of codes, ordinances, decision and orders, and other matters of enforcement.

- [See Agricultural Rules](#)
Chapter 102 Rules Relating to the Administration of chapter 19.3A, Maui County Code, Pertaining to the Agricultural District
- [See Farm Dwelling and Agricultural Structure Declaration](#)

Maui County Department of Water Supply, Maui County’s Landscape and Gardening Handbook

<https://www.mauicounty.gov/DocumentCenter/View/15460/Handbook-Publication>

2200 Main St. Suite 102, Wailuku, HI 96793

Phone: (808) 270-7816

Maui County Soil & Water Conservation Districts (SWCD)

<http://www.mauicountysoilandwater.org/home>

77 Hookele St., Suite 202 Kahului, HI 96732

Phone: (808) 871-5500 ext. 3 Molokai-Lana‘i SWCD Phone: (808) 216-0360

Email: mauiswcds@gmail.com

Five SWCD districts include Central Maui, Hana, Olinda-Kula, West Maui and Molokai-Lanai focusing on watershed planning, flood prevention, reforestation, runoff control, wildlife habitat and environmental education. Services to farmers, ranchers, and private land users are in making the best use of their natural resources through proper land use planning, design and implementation of best management practices and use of federal funded farm programs.

The Permaculture Group Inc., dba ‘Ukiu Farms

<https://www.ukiufarms.com/story>

1135 Makawao Ave., PMB 182, Makawao, HI 96768

Phone: (808) 250-1469

Produce made to order activated biochar, soil amendments with living microbes.

**UH Mānoa College of Tropical Agriculture and Human Resources
Department of Natural Resources and Environmental Management
“Toward Sustainable Agriculture: A Guide for Hawai‘i’s Farmers”**

https://www.sare.org/wp-content/uploads/Toward-Sustainable-Agriculture_guide.pdf

1910 East-West Road, Honolulu HI 96822

USDA Natural Resources Conservation Service, Pacific Islands Area Agricultural Management Assistance

<https://www.nrcs.usda.gov/programs-initiatives/ama-agricultural-management-assistance/pacific-islands-area/pia-agricultural>

77 Hookele St., Suite 202, Kahului, HI 96732

Phone: (808) 214-1747

Free technical assistance, or advice, for farmer and rancher land. Practices are limited to high tunnel systems and supporting practices.

- **Environmental Quality Incentive Program**

<https://www.nrcs.usda.gov/programs-initiatives/eqip-environmental-quality-incentives>

77 Hookele St., Suite 202 Kahului, HI 96732

Phone: (808) 214-1747

Provides voluntary, incentive-based conservation to landowners through a variety of programs

EQUIPMENT & SUPPLIES

BEI Hawaii

<http://www.beihawaii.com/>

300 Pakana St., Wailuku, HI 96732

Phone: (808) 244-3761

Fertilizer supplies Hawaii's leading distributor of agricultural and industrial chemical, fertilizer and specialty products.

Del's Feed and Farm Supply

https://www.tractorsupply.com/policies-information_dels-feed-and-farm-supply?utm_source=pepperjam&utm_medium=affiliate&cid=pepperjam-affiliate-53473&affiliate_id=53473&click_id=4484334640&clickId=4484334640

326 Hanamau St., Kahului, HI 96732

Phone: (808) 873-0101

Farm, ranch and nursery supplies store.

Haiku Hay & Grain Inc

1270 Haiku Rd. Suite B, Haiku, HI 96708

Phone: (808) 575-2444

Feed & propane supplies.

Hawai'i Seed Growers Network

<https://www.hawaiiseedgrowersnetwork.com/>

Email: hawaiiseedgrowersnetwork@gmail.com

The Hawai'i Seed Growers Network grows high quality, locally adapted seed for Hawai'i's gardeners and market farmers, which are made available online through their seed store. Their website offers additional resources and educational opportunities on how to save your own seed crop.

Hawthorne Cat

<https://www.hawthornecat.com/contact/hawaii-maui/>

470 Hana Hwy, Kahului, HI 96732

Phone: (808) 667-3160

Construction machinery and equipment store.

Kula True Value Hardware & Nursery

<https://stores.truevalue.com/hi/kula/16929/>

3100 Lower Kula Rd., Kula, HI 96790

Phone: (808) 876-2551

Hardware and nursery supply store.

Lowe's Home Improvement

https://www.lowes.com/store/HI-Kahului/3279?cm_mmc=lod- -c- -lcl- -awr- -yxt- -bi- -3279- -na- -0- -0&y_source=1_NDAyNjg4Ny00ODMtbG9jYXRpb24ud2Vic2l0ZQ%3D%3D

214 Hookele St, Kahului, HI 96732

Phone: (808) 872-1920

Hardware, tools and nursery supplies store.

Maui Feed Farm Supplies LLC

495 Hukilike St Bay 7, Kahului, HI 96732

Phone: (808) 871-1159

Feed supplies

Maui Power Equipment

www.mauipowerequipment.com

970 Lower Main St., Wailuku, HI 96793

Phone: (808) 249-2730

Equipment & repair, agriculture supplies store.

Papé Machinery

<https://www.papemachinery.com/>

485 Waiale Rd B, Wailuku, HI 96793

Phone: (808) 242-4664

Construction machinery and equipment store.

RPL Equipment LLC

<https://www.constructionequipmentguide.com/dealers/rpl-equipment-llc/2694>

250 Waiehu Beach Rd, Wailuku, HI 96793

Phone: (808) 242-7647

Construction machinery and equipment store.

The Home Depot

<https://www.homedepot.com/l/Maui/HI/Kahului/96732/1703>

100 Pakaula St, Kahului, HI 96732

Phone: (808) 893-7800

Hardware, construction, small machinery and nursery supplies store.

Wai Ulu Feeds Supply

130 Makawao Ave., Makawao, HI 96768

Phone: (808) 572-0121

Feed and agricultural supplies

West Maui Irrigation & Nursery Supply

<https://www.westmauiirrigation.com/>

105 Ala Hoku Pl., Lahaina, HI 96761

Phone: (808) 665-8333

Landscaping, nursery, garden, & irrigation supplies

FARMERS MARKETS

Hāna Farmers Market

<https://hanafarmersmarket.org/>

Hāna Town Center

Phone: (808) 344-2706 Email: info@hanafarmersmarket.org

Open Fridays 2:30PM-5:30PM

Farmers Market Paia

<https://farmersmarketpaia.com/>

499 Baldwin Ave. Paia Hawaii 96779

Phone: (808) 870-2077 Email: FarmersMarketPaia@gmail.com

Open Sundays 8AM – 1PM

Ko Mahi'ai Makeke Farmers Market

1819 South Kihei Rd., Kihei, HI, United States, Hawaii

(808) 359 - 9013

Saturday 8am - 12pm

Lāna'i Farmers Market, managed by the Hawai'i Farmers Union United Lāna'i Chapter

<https://sites.google.com/view/hfuu-lanai-chapter/home?authuser=0>

Email: hfuu@hfuu.org

Location and dates: TBD

Maui Hub

<https://www.mauihub.org/pick-up-locations>

250 Alamaha St. #S9, Kahului, HI 96732

Phone: (808) 757-9125 Email: info@mauihub.org

Maui Hub handles the marketing, aggregation and distribution for farmers and small businesses. Purchase local, fresh, affordable produce and value-added products for home delivery or pickup at designated locations across Maui. New farmers can become vendors to sell their produce and donations are also accepted.

Maui Swap Meet

UH Maui College: [310 Ka'ahumanu Avenue Kahului, HI 96732](https://www.uhmaui.edu/)

Phone: (808) 244 - 3100

Open Saturdays 7AM–1PM

Napili Farmers Market

<https://www.napilifarmersmarket.com/>

4900 HI-30, Lahaina, HI 96761

Phone: (808) 633 - 5060

Open Wednesdays and Saturdays 8AM – 12PM

Queen Ka’ahumanu Centers Farmers Market

<https://queenkaahumanucenter.com/event/farmers-market/>

275 W Kaahumanu Ave, Kahului, HI, 96732

Phone: (808) 877 - 3369

Open Every Tuesday, Wednesday and Friday 8AM – 4PM

Sust‘ainable Molokai Mobile Market

<https://www.sustainablemolokai.org/food-sovereignty/mobile-market>

PO Box 250 40 Ala Malama Ave. Suite 211, Kaunakakai, HI 96748

Phone: (808) 560-5410 Email: info@sustainablemolokai.org

Mobile Market has been connecting local producers with consumers since 2015.

Mobile Market <https://www.sustainablemolokai.org/food-sovereignty/mobile-market>

Upcountry Farmers Market

<http://www.upcountryfarmersmarket.com/>

55 Kiopaa St, Makawao, HI 96768

Email: info@upcountryfarmersmarket.com

Open Saturdays 7AM – 11AM

Wailea Village Farmers Market

<https://www.wvfarmersmarket.org/>

100 Wailea Ike Dr, Wailea 96753

Open Every Tuesday 8am - 11:30am

Wailuku Community Farmers Market

Wailuku Shingon Mission (1939 North St. Wailuku)

Phone: (808)214-3705

Open 2nd and 4th Sundays 9AM-1PM

Wednesday Farmers Market

Kulamalu Town Center

Wednesdays 8am - 1pm

FOOD HUBS AND AGGREGATORS

Hawai'i 'Ulu Cooperative

<https://eatbreadfruit.com/pages/aboutus>

79-1017 E Honalo Rd., Kailua-Kona, HI 96740

Phone: (808) 322-3064 Email: info@eatbreadfruit.com

A farmer-owned business working to revitalize 'ulu (breadfruit) and other Hawai'i-grown staple crops such as kalo (taro), 'uala (sweet potato) and pala'ai (pumpkin) by empowering farmers as change-makers in Hawai'i's food system. Through wholesale marketing and an online store, the cooperative offers delicious, high-quality products that are local, healthy, accessible, and sustainable, as well as ulu trees.

Kula Produce

<https://www.armstrongproduce.com/>

217 Hoohana St, Kahului HI, 96732

Phone: (808) 871-6232

Produce aggregation and delivery.

Local Harvest, Island Fresh-Maui

<https://www.islandfreshdelivery.com>

Phone: (808) 664-1129 Email: Islandfreshdelivery@Islandfreshdelivery.com

Through a membership for the Community Sourced Agriculture (CSA) program, you receive an order of fresh, local, seasonal, organic & natural, non-GMO produce and local products delivered to your home or office throughout Maui and Lanai or pick it up at designated locations.

Maui Hub

<https://www.mauihub.org/pick-up-locations>

250 Alamaha St. #S9, Kahului, HI 96732

Phone: (808) 757-9125 Email: info@mauihub.org

Maui Hub handles the marketing, aggregation and distribution for farmers and small businesses. Purchase local, fresh, affordable produce and value-added products for home delivery or pickup at designated locations across Maui. New farmers can become vendors to sell their produce and donations are also accepted.

Sust'ainable Molokai

<https://www.sustainablemolokai.org/>

PO Box 250 40 Ala Malama Ave. Suite 211, Kaunakakai, HI 96748

Phone: (808) 560-5410 Email: info@sustainablemolokai.org

Sun Fresh

250 Alamaha St #S10, Kahului HI, 96732

Phone: (808) 873-8480 Email: customerservice@myfresh.com

Produce wholesale.

VIP Food Service

<https://www.vipfoodservice.com/home>

74 Hobron Avenue, Kahului, HI 96732

Phone: (808) 8777-5055 Email: contact@vipfoodservice.com

Locally grown and family owned, serving Maui foodservice operators, businesses and retailers since 1950.

Watanabe Vegetable Processing

571 Naalae Rd, Kula, HI 96790

Phone: (808) 878-6747

Produce wholesaler.

PEST MANAGEMENT

Hawai'i Department of Agriculture Plant Quarantine Branch

<https://hdoa.hawaii.gov/>

1849 Auiki St, Honolulu, HI 96819

Phone: (808)832-0566

The Hawai'i Department of Agriculture's Plant Quarantine Branch oversees the regulation of plant and animal imports to prevent the introduction of harmful pests and diseases.

Hawai'i Department of Agriculture Plant Pest Control

<https://hdoa.hawaii.gov/pi/ppc/>

635 Mua Street Kahului, HI 96732

Phone: (808)873-3555 Email: hdoa.ppc@hawaii.gov

The Hawai'i Department of Agriculture's Plant Pest Control Branch helps manage and eliminate harmful plant pests to protect local agriculture.

Maui Invasive Species Committee (MISC)

<https://mauiinvasive.org/>

1000 Holumua Road Pā'ia, HI 96779

Phone: (808) 573-6472 E-mail: miscpr@hawaii.edu

MISC is a project of the University of Hawaii-Pacific Cooperative Studies Unit working to prevent, control, or eliminate the most threatening invasive plant and animal species to protect Maui's watersheds, ecological resources, agriculture, and community.

Molokai Invasive Species Council MoMISC

<https://www.molokaiisc.org/>

P.O. Box 220 Kualapuu, HI 96757

Phone: (808) 553-5236 ext. 6585

National Pesticide Information Center

<http://npic.orst.edu/health/humhealth.html>

Phone: 1 (800) 858-7378 Email: npic@ace.orst.edu

Information on Pesticides, their uses, and their effects on human health.

State of Hawai'i Department of Health, Vector Control

641 Mua St., Kahului, HI 96732

Phone: (808) 873-3560

UH Mānoa College of Tropical Agriculture and Human Resources, Soils and Plant Nutrient Management PUBLICATIONS

<https://www.ctahr.hawaii.edu/Maui/pages/Soil.aspx>

Publications, fact sheets and general information related to soils and plant nutrient management.

USDA Animal and Plant Health Inspection Service

<https://www.aphis.usda.gov/aphis/ourfocus/planthealth/ppq-program-overview/SPHD/Hawai'i>

635 Mua Street Kahului, HI 96732-2322

Phone: (808) 877-5261

Through APHIS, the Plant Protection Quarantine division safeguards U.S. agriculture and natural resources against the entry, establishment, and spread of economically and environmentally significant pests, and facilitates the safe trade of agricultural products.

ORGANIZATIONS

‘Āina Momona-Molokai

<https://www.kaainamomona.org>

A non-profit community organization dedicated to achieving environmental health and sustainability through restoring social justice and Hawaiian sovereignty.

Common Ground Collective’s Foster Farming Harvest Program

<https://www.commongroundcollective.com/foster-farming>

Phone:(808) 856-0906 Email: cgcmaui@gmail.com

Non-profit organization that provides education and assistance to promote food security, economic and educational opportunities in Maui County. CGC implements Mobile Farming which utilizes privately owned land to grow gardens and edible landscapes which they maintain, harvest and market. Through the Foster Farming program, CGC brings back to life orchards and farms neglected and abandoned through hardships.

East Maui Community Water Authority

<https://www.mauicounty.gov/2741/East-Maui-Regional-Community-Board-Water>

200 South High Street, 8th Floor, Wailuku, HI 96793

Phone: (808) 270-7855 Email: Board.EMRCB@mauicounty.gov

The East Maui Community Water Authority manages water resources for local communities, ensuring fair access and sustainable use.

Eat Local Maui, Project Locavore

<https://projectlocavore.com/>

Email: projectlocavore@gmail.com

Project Locavore hosts the annual Eat Local Maui Challenge to eat 100% local for a week to support locally grown products, and shares resources, recipes, and keiki activities.

E kūpaku ka ‘āina

<https://www.ekupakukaaina.org/>

Perpetuating traditions of Hawaiian crop cultivar biocultural diversity, placed-based agriculture and planting methods strengthens climate resilience and food security in our islands.

Family and Friends of Agriculture

<https://www.facebook.com/FamilyandFriendsofAgricultureMaui/>

Supports Maui farmers and advocates for issues that address the concerns of Maui farmers.

Food Security Hawai'i

<https://foodsecurityhawaii.org>

PO Box 886, Haiku, HI 96708

Phone: (808) 344 5339

Through community partnerships, this non-profit creates self-reliant food security food systems, agroforestry, & aquaculture systems in the neighborhood and in backyards designed through a worker-owned cooperative using innovative regenerative agriculture & technology by providing plants, tools, hands-on garden assistance, education, and a long-term success network.

Grow Some Good Maui

<https://growsomegood.org>

PO Box 1902, Wailuku, HI 96793

Phone: (808) 215-9228

In addition to helping establish food gardens and living science labs, resources and curriculum in local schools, this non-profit provides support through community partnerships in agriculture, science, food education and nutrition.

Hawai'i Agricultural Foundation

<https://www.hawaiiagfoundation.org>

3538 Waialae Ave #203 Honolulu, HI 96816

Phone: (808) 927-9749 Email: info@hawaiiagfoundation.org

HAF works to support and sustain the state's agricultural industry through educational and outreach programs in the community, as well as direct marketing, technical, educational and in-the-field support for farmers.

- Farmer Assistance Programs
- Youth Educational Programs
- Outreach/Public Awareness Programs

Hawai'i Cattlemen's Council

<https://www.hicattle.org>

P.O. Box 934, Hilo, HI 96721

Phone: (808) 333-6755

The non-profit Council is a statewide umbrella organization comprised of four county level Associations providing cattle producers in the state the best opportunity to be both sustainable and profitable through education, promotion and research.

Hawai'i Farmers Union Foundation

<https://hfuuhi.org/foundation/>

PO Box 1532, Kapaa, HI 96746

The non-profit supports farmers in farmer training, Hawaiian agricultural practices, improving soil health, and supporting food hubs through scientific and educational programs as well as charitable activities. The current programs are listed below:

- Ku'ia Agricultural Education Center
- Increasing the Competitiveness of Hawaii's Avocado Industry through Coordinated Supply and Marketing Strategies
- Growing Family Agriculture

Hawai'i Farmers Union United

<https://hfuuhi.org>

Email: hfuu@hfuu.org

A grassroots non-profit producer-driven organization of family farmers, fisherman, ranchers and consumers in all 50 states with four chapters on Maui and a chapter each in Molokai and Lanai. The membership focuses on legislation, education, and cooperation.

Hawai'i Nutrition Center

<https://nutritioncenter.ctahr.hawaii.edu/snap-ed/>

Phone: (808) 956-4124 Email: hnctr@hawaii.edu

The Hawai'i SNAP-Ed program teaches nutrition education and physical activity. Hawai'i SNAP-Ed also offers special projects, like Food to Grow, that address access to healthy foods in various settings.

Hawai'i Organic Farming Association (HOFA)

<https://hawaiiorganic.org>

76-789 Io Place, Kailua Kona, HI 96740

Phone: (808) 969-7789

HOFA supports and promotes organic agriculture in Hawai'i. HOFA membership is comprised of local organic farmers, distributors, retailers, students and consumers.

Hawai'i Taro Farm LLC-Maui

<https://hawaiitarofarm.com>

Email: hawaiitarofarmllc@gmail.com

Hawai'i Taro Farm founder, Bobby Pahia, and its hui of family farmers are of all races and background aim to create a network of growers and a centrally located hub with processing and food distribution facilities as part of a unique agricultural development called the Waikapu Country Town Project on 910 acres which will also provide workforce development for the hui of farmers.

Ma Ka Hana Ka 'Ike

<https://www.hanabuild.org/>

Email: kokua@hanabuild.org

Ma Ka Hana Ka 'Ike's mission is to provide Hāna youth with a way to learn that makes sense to them, that builds their self-esteem and shows them they have the power to change their future. Ma Ka Hana Ka 'Ike's 'āina-based curriculum includes a focus on building students' culinary and food production skills.

Mālama I Ke Ola

<https://www.ccmaui.org/>

1881 Nani St., Wailuku, HI 96793

Phone: (808) 871-7772

Mālama I Ke Ola community health center serves Maui to nurture community health and wellness.

Mana Up

<https://manauphawaii.com/>

680 Iwilei Road, Suite 420, Honolulu, HI 96817

Phone: (808)425 -4028 Email: info@manauphawaii.com

Mana Up is a Hawai'i-based initiative dedicated to supporting local entrepreneurs in scaling up their products.

Maui Association of Landscape Professionals

<https://malp.org/>

P.O. Box 2099 Wailuku, HI 96793

Phone: (808) 268-6927

Email: info@malp.org

The purpose of the Association is to improve the standards and promote the growth of the landscape industry on Maui.

Maui Cattlemen Association

<https://www.hicattle.org/about-us>

P.O. Box 934 Hilo, HI 96721

Phone: (808)333-6755

Email: office@hicattle.org

The Maui Cattlemen's Association supports and promotes Maui's cattle industry through education and advocacy.

Maui Chamber of Commerce

<https://www.mauichamber.com/cpages/mim>

Phone: (808) 244-0081

Email: office@mauichamber.com

The non-profit entity supports our visitor industry and local businesses providing members with legislative advocacy, business education and training, marketing and promotion, resources and business networking. The Made in Maui County Trade Council committee works together to increase awareness of our locally made products and through the "Made in Maui," "Made in Moloka'i," "Made in Lāna'i" seals which indicated that at least 51% of the value added into the product was done in Maui County.

Maui Coffee Association

<https://mauicoffeeassociation.org/>

Phone: (808) 572-8306

Email: mauimartha@hawaiiantel.net

A group of growers, service providers, merchants and enthusiasts who promote coffee grown in Maui County, Hawaii.

Maui County Department of Environmental Management Recycling Section

<https://www.mauicounty.gov/2490/Recycling>

2145 Wells St., Suite 305, Wailuku, HI 96793

Phone: (808)270-7880

Email: recycle.maui@mauicounty.gov

The Recycling Section of Maui County's Department of Environmental Management focuses on landfill diversion and Zero Waste initiatives.

Maui County Department of Transportation

<https://www.mauicounty.gov/125/Department-of-Transportation>

110 Ala'ihī Street, Suite #210, Kahului, HI 96732

Phone: (808)270-7511

Email: public.transit@mauicounty.gov

Provides transportation of people and goods throughout Maui County

Maui County Department of Water Supply

<https://www.mauicounty.gov/126/Department-of-Water-Supply>

200 S. High St., Kalana O Maui Bldg, 5th Fl, Wailuku, HI 96793

Phone: (808) 270-8046

Email: water.supply@mauicounty.gov

The Maui County Department of Water Supply provides clean water to about 36,400 customers on Maui and Molokai, meets all water quality standards, and asks everyone to help save water.

Maui County Farm Bureau

<https://mauicountyfarmbureau.org>

PO Box 148, Kula, HI 96790

Phone: (808) 281-9718 Email: info@mauicountyfarmbureau.com

A grass roots 501(c)(5) organization of farms and ranch families, agricultural industries, and associated organizations dedicated to supporting agriculture in Maui County affiliated with both the statewide Hawai'i Farm Bureau and the American Farm Bureau Federation. To introduce children to agriculture, MCFB hosts Ag in the Classroom for second graders, Ag Awareness for fifth graders and works with middle and high school students. Annually, MCFB hosts the AgFest, a focus on agriculture producers and 4-H livestock club activities.

Maui County Soil & Water Conservation Districts

<https://www.mauicountysoilandwater.org/>

77 Hookele Street, Suite 202, Kahului HI 96732

Phone: (808)871-5500 Email: mauiswcds@gmail.com

Maui County's Soil and Water Conservation Districts help take care of the land and water by supporting conservation projects and teaching people how to protect natural resources.

Maui Economic Opportunity

<https://www.meoinc.org/>

99 Mahalani Street, Wailuku, HI 96793

Phone: (808) 249 - 2990

Email: Transportation services: transportation@meoinc.org

Business Development Center: bdcinfo@meoinc.org

Early Childhood Services: ecs@meoinc.org

Community Services: cs@meoinc.org

MEO is an organization that provides public services, transportation, and support for Maui's communities.

MEO coordinates the USDA Senior Farmers Market Nutrition Program vouchers.

Maui Emergency Feeding Taskforce

<https://effformaiui.org/>

Email: feedingmaui@gmail.com

Maui Emergency Feeding Taskforce supports long-term sustainability for individuals and communities affected by Maui's 2023 disasters.

Maui Emergency Management Agency (MEMA)

<https://www.mauicounty.gov/70/Emergency-Management-Agency>

Phone: (808) 270-7285 Email: emergency.management@co.maui.hi.us

MEMA's mission is to ensure the safety and resilience of Maui Nui through collaboration, planning, and coordinated responses.

Maui Farm

<https://www.themauifarm.org>

P.O. Box 1776, Makawao, HI 96768

Phone: (808) 579-8271 Email: info@themauifarm.org

The Maui Farm provides farm-based, family-centered programs that teach essential life skills for self-sufficient living.

Maui Nui Botanical Gardens

<https://mnbg.org/>

150 Kanaloa Ave, Kahului, HI 96732

Phone: (808) 249-2798

The mission of Maui Nui Botanical Gardens is to foster appreciation and understanding of Maui Nui's plants and their role in Hawaiian cultural expression by providing a gathering place for discovery, education, and conservation.

Maui Nui Healthy Eating Active Living (HEAL) Coalition

<https://www.hiphi.org/maui/healthy-eating-active-living-heal-coalition-for-maui-molokai-and-ianai/>

Phone: (808) 591-6508 Email: contact@hiphi.org

The Healthy Eating Active Living (HEAL) Coalition for Maui, Molokai, and Lānaʻi is working to create a healthier place to live, work, and play by bringing together those interested in seeing our community thrive.

Maui Nui Food Alliance

<https://www.mauinuifoodalliance.org/>

Email: MauiNuiFoodAlliance@gmail.com

A cross-sector collaborative dedicated to a resilient and healthy food future for Maui, Molokai, and Lānaʻi, guided by the strategic priorities to promote a culture of help, plan for our food future, and advocate for impact.

Maui Nui Marine Resource Council Reef Friendly Landscaping Certification Program

<https://www.mauireefs.org/what-we-do/reef-friendly-landscaping/>

P.O. Box 331204, Kahului, HI 96733

Phone: (808)707-5056 Email: rfl@mauireefs.org

The program helps properties use eco-friendly landscaping to keep Maui's ocean and coral reefs clean.

Maui United Way

<https://mauiunitedway.org>

Phone: (808) 244-8787 Email: info@mauiunitedway.org

The non-profit bridges community members with support programs that address Maui County's health and human service needs; funds Maui's health and human services partner agencies through grants; connect people interested in donating their time and talents to serve the community through the Volunteer Matching program.

Molokai Homestead Farmers Alliance

<https://www.molokaihfa.com>

2200 Farrington Ave. Hoolehua, HI 96729

Phone: (808) 646-9037

Ensures that current and future Molokai Hawaiian homesteaders have preferential access to and use of two-thirds of the water supply, as well as, to explore farming technology and other opportunities for native Hawaiians.

The Nature Conservancy

<https://www.nature.org/en-us/>, <https://www.nature.org/en-us/about-us/where-we-work/united-states/hawaii/>,
<https://www.nature.org/en-us/about-us/where-we-work/united-states/hawaii/stories-in-hawaii/restoring-hawaiis-reefs/>

Phone: 808-537-4508 Email: hawaii@tnc.org

The Nature Conservancy works with government agencies, community groups and other organizations to protect native species, preserve native forest habitat, and restore coastal habitat.

Polipoli Farms

<https://www.polipolifarms.com>

Email: aloha@polipolifarms.com

Polipoli Farms in Maui grows native Hawaiian crops like taro and breadfruit using natural farming methods.

Seed of Love Hawai'i - Molokai

<https://www.seedoflovehawaii.org>

Email: info@seedoflovehawaii.org

A community care farm creating healing and educational opportunities for our youth and community members with little to no financial means.

Programs include:

- Teaching earth friendly and sustainable farming practices
- Animal care and compassion
- Community empowerment
- Nutrition and Health Advocacy

Sust'ainable Molokai

<https://www.sustainablemolokai.org>

PO Box 250 40, Ala Malama Ave. Suite 211, Kaunakakai, HI 967

Phone: (808) 560-5410 Email: info@sustainablemolokai.org

A community development organization committed to restoring 'āina momona (thriving people and abundant land) to Molokai by uniting traditional practices with responsible, modern sustainability solutions. The focus is on strengthening food sovereignty, energy resilience, and environmental & resource conservation on Molokai.

Current projects:

- Mobile Market <https://www.sustainablemolokai.org/food-sovereignty/mobile-market>
- Agricultural Training <https://www.sustainablemolokai.org/food-sovereignty/agricultural-training>
- Poultry Egg Production Project (PEEP) <https://www.sustainablemolokai.org/food-sovereignty/agricultural-training>
- Mahi'ai Moa Project <https://www.sustainablemolokai.org/food-sovereignty/mahi-ai-moa>
- Food Bank & Pantry <https://www.sustainablemolokai.org/food-sovereignty/food-bank-and-pantry>
- Farm Business Support <https://www.sustainablemolokai.org/food-sovereignty/food-bank-and-pantry>
- Hawai'i Farm to School Hui <https://www.sustainablemolokai.org/food-sovereignty/other-projects>

SLAUGHTERHOUSES

Decoite Packing House

<https://www.fsis.usda.gov/inspection/fsis-inspected-establishments/a.-decoite-packing-house-inc>

3100 Kailiili Rd, Haiku, HI 96708

Phone: (808) 572-8570

Maui Cattle Company Slaughterhouse

106 S Kane St, Kahului, HI 96732

Phone: (808) 877-0044 Email: info@maucattlecompany.com

Maui Nui Venison

<https://www.mobileslaughter.com/>

Phone: (808) 934-2245 Email: info@mauinuivenison.com

Maui Nui Venison's mission is to help balance Axis deer populations for the good of Maui Nui's environment, communities, and food systems.

Molokai Livestock Cooperative

<https://www.instagram.com/molokailivestockcoop/>

3355 Mauna Loa Hwy, Ho'olehua, HI 96729

Phone: (808) 567-6994

The Molokai Livestock Cooperative promotes the growth of the grass finishing business of livestock operations and the promotion of local food production and distribution. MLC is a federally inspected USDA slaughter and processing facility for both commercial and home use needs.

Nakasone Slaughterhouse

<https://www.fsis.usda.gov/inspection/fsis-inspected-establishments/nakasone-slaughterhouse>

43 B. Ulunui Pl, Pukalani, HI 96768

Phone: (808) 572-8501

Meat Processing; Meat Slaughter

WATER MANAGEMENT

East Maui Regional Community Board (Water Authority)

<https://www.mauicounty.gov/2741/East-Maui-Regional-Community-Board-Water>

The East Maui Regional Community Board water authority is concerned with the Nāhiku, Ke'anae, Honomanū, and Huelo license areas and shall, investigate, acquire, manage, and control water collection and delivery systems with staff that consists of a regional director, grant writers, community liaisons, and water system technical analysts.

Maui County Department of Water Supply, Best Management Practices-Farm

<https://waterresources.mauicounty.gov/164/Best-Management-Practices---Farm>

2200 Main St. Suite 102, Wailuku, HI 96793

Phone: (808) 463-3110

- [Chemical Storage and Transfer \(PDF\)](#)
- [Irrigation Water Management Measure \(PDF\)](#)
- [Management Measure for Wastewater and Runoff from Confined Animal Facility \(PDF\)](#)
- [Nutrient Management \(PDF\)](#)
- [Pest Management \(PDF\)](#)
- [Pesticide Container Disposal \(PDF\)](#)
- [Proper Pesticide Storage and Waste Handling \(PDF\)](#)

UH Maui College, Water Quality Lab

<https://maui.hawaii.edu/waterlab/>

Phone: (808) 984-3682

Email: andreake@hawaii.edu

The UHMC Water Quality Lab measures dissolved inorganic (nitrate+nitrite, silicate, phosphate and ammonia) and organic (total nitrogen and phosphorus) nutrients as well as Escherichia coli (E-coli) in seawater and freshwater. The lab provides services at a per sample rate to industry, researchers, non-profit organizations, and the community.

This directory will be updated as needed.
Version 4, 3/31/2025

Notes:

Office of the Mayor

200 S. High St., Kalana O Maui Bldg, 9th Floor, Wailuku, HI 96793

Phone: (808) 270-7855 Email: Mayors.Office@mauicounty.gov

For Molokai Residents: 1 (800) 272-0117

For Lanai Residents: 1 (800) 272-0125

<https://www.mauicounty.gov/Directory.aspx?did=90>