



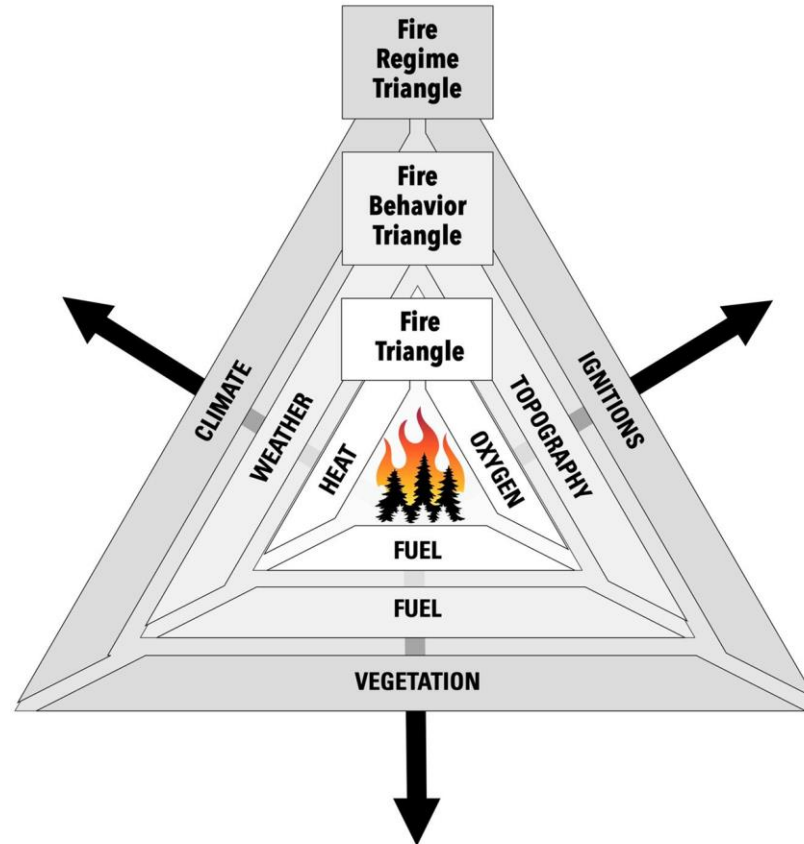
ADEPT Committee
December 5, 2024





MULTI-SCALE FIRE TRIANGLE

FIRE GROWTH & COMPLEXITY









FROM WILDFIRES

Island of Maui

Fire Risk Community Zoning

Community Fire Risk Rating

LOW RISK

HIGH RISK

Map created by M. Wasser, 12/17/13, NAD 83 UTM Zone 4N

Maui Fire Department

Maui County

HWMO

Hawaii Wildland Resource Management Office

This publication made possible through a grant from the USDA Forest Service. HWMO is an equal opportunity employer.

Map 19. *Island of Maui 2013 Communities at Risk from Wildfires Map.*

INPUT RELATED TO RESILIENT LANDSCAPES

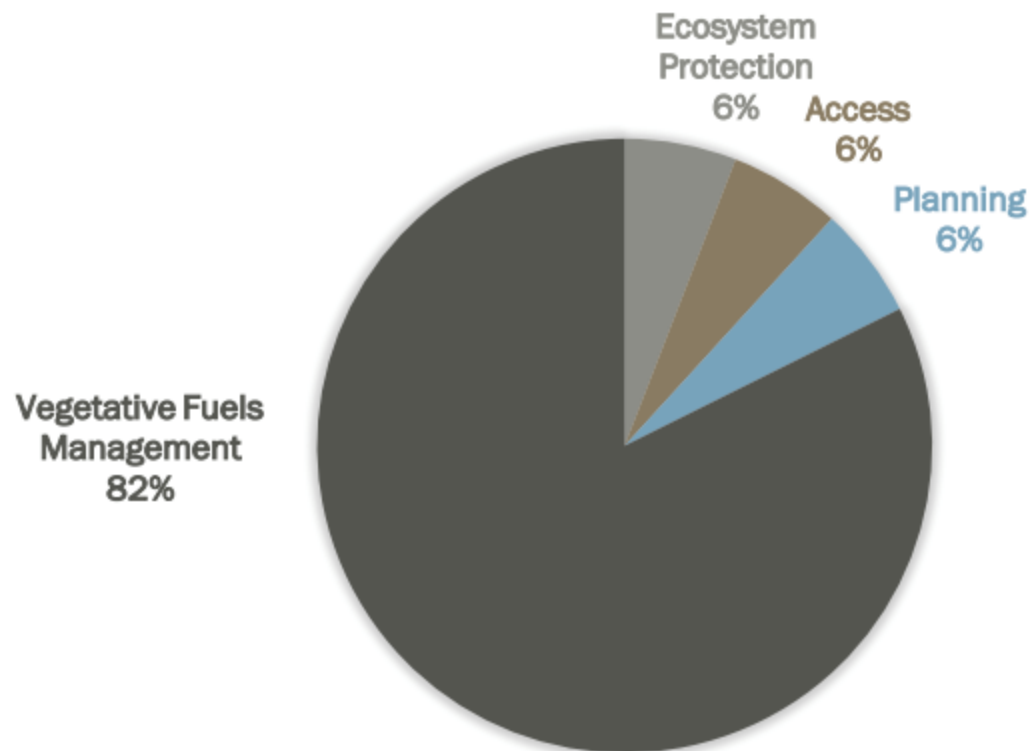


Figure 7. CWPP participant input related to restoring and maintaining landscapes to reduce wildfire threat/impact.

FUELS MANAGEMENT RECOMMENDATIONS

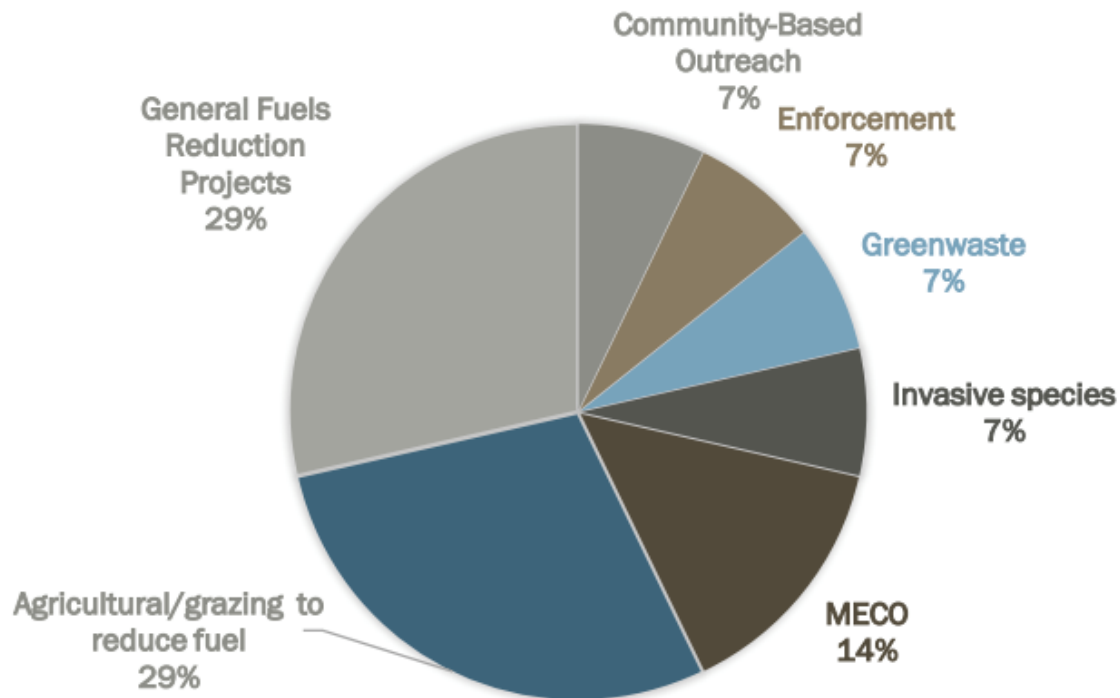


Figure 8. CWPP participant recommendations for addressing the need for greater fuels management across Upcountry Maui.



FEMA

Preparedness Community



Wildfire

Wildfire | Mitigation (Property: Defensible Space)

[Go to hazard](#)

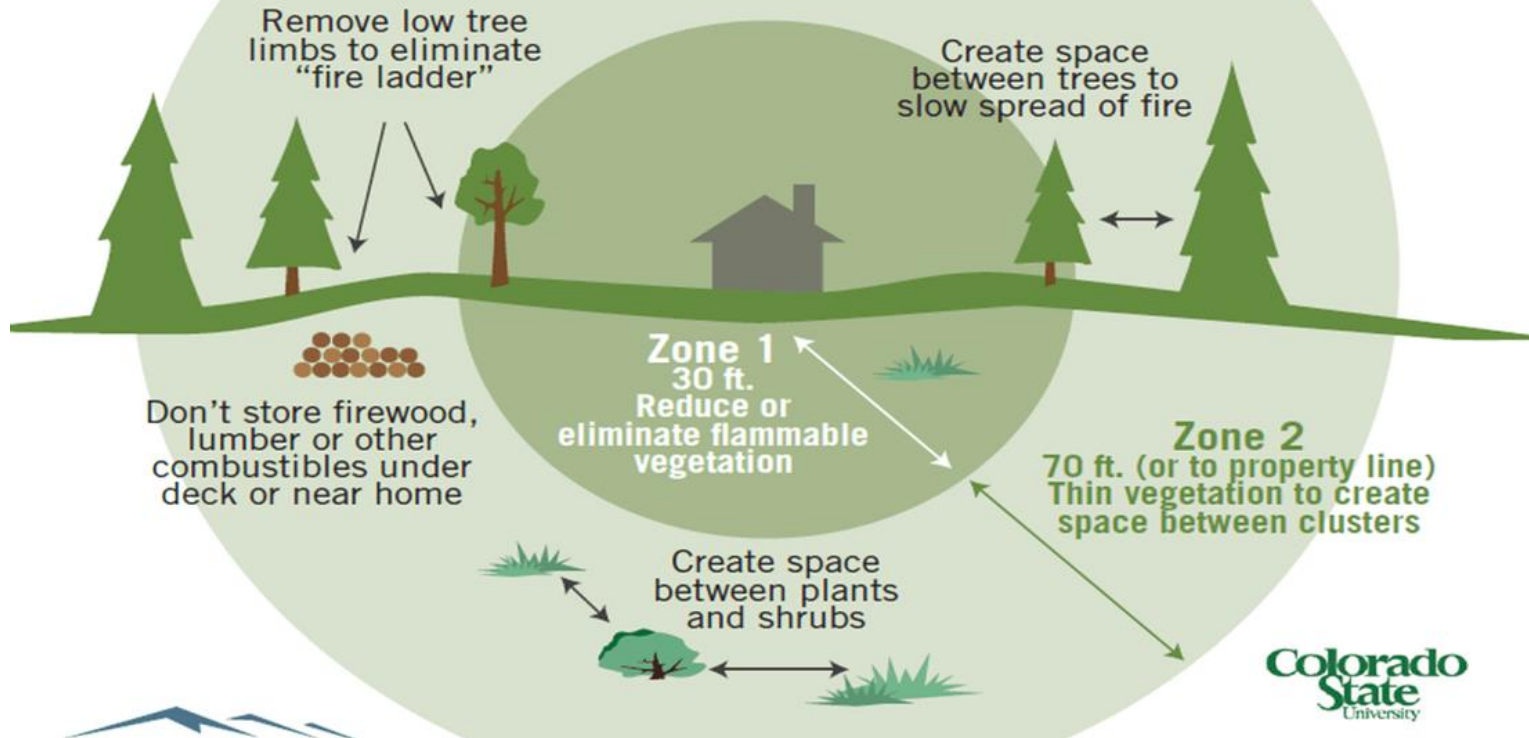
Protective Actions ⓘ

- Create Defensible Fire-Resistant Property
- The National Fire Protection Association recommends a defensible space—free of leaves, debris, or other flammable materials—of up to 200 feet from a structure. Identify and maintain water sources, such as hydrants, ponds, swimming pools, and wells and ensure they are accessible to the fire department. Have a hose that can reach any area of your property. Think about creating three zones around your house or business.
- Zone 1) A minimum 30-foot space. Clear combustible materials; replace flammable vegetation; prune branches and shrubs to create 15 feet of space from the structure, from the ground, and between trees.
- Zone 2) 30-100 feet out. Replace flammable vegetation, create “fuel breaks” such as driveways and gravel walkways; prune trees limbs 6 to 10 feet from the ground.
- Zone 3) 100-200 feet out. Remove underbrush and thin vegetation, ensure that firewood is placed at least 100 feet away from structure, and keep tall trees from creating touching canopies.

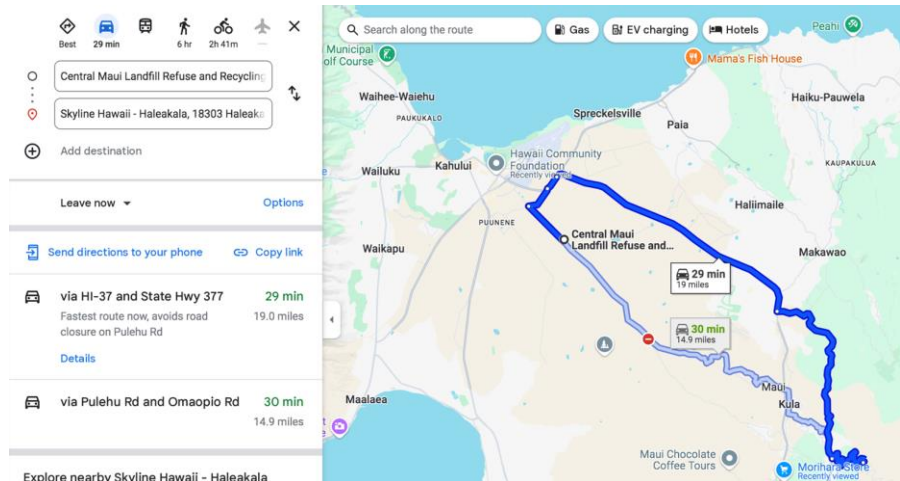
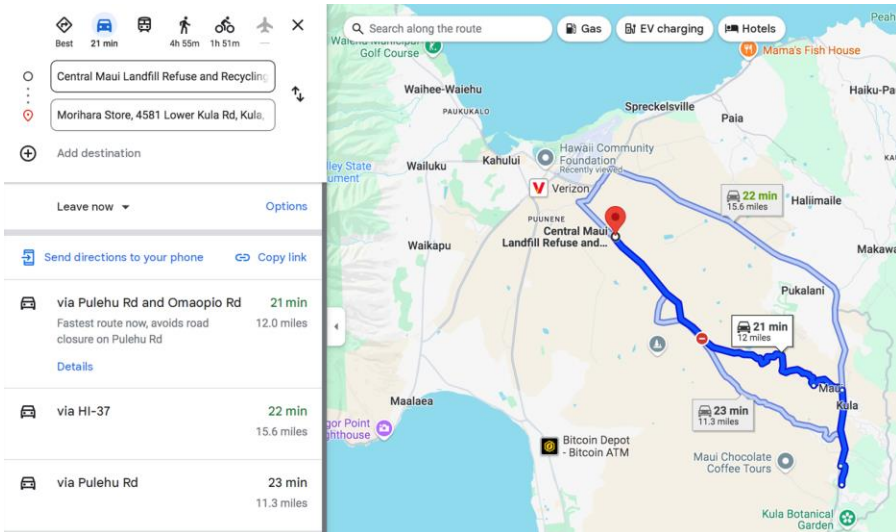
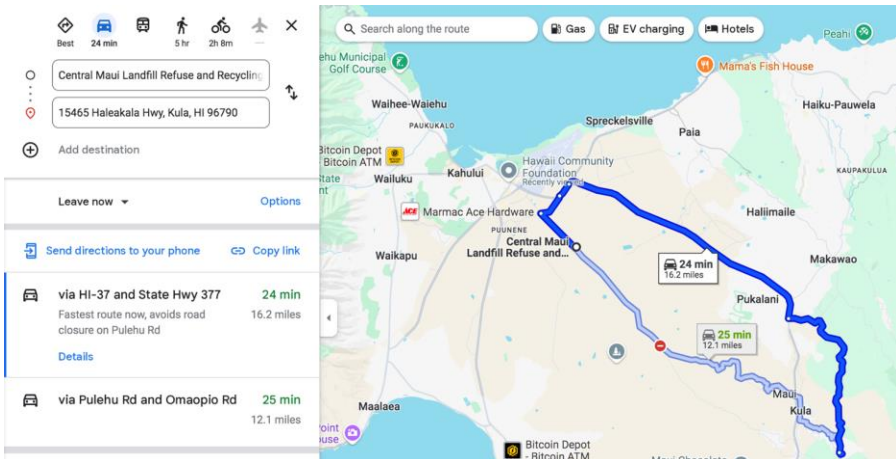
Supporting Research ⓘ

- In areas across the country where the risk of wildfire is high, the home ignition zone extends up to 200 feet beyond the actual home structure. [1]
- Sprinklers are an effective method for structure protection, under extreme fire behavior conditions, providing that the water supply continues up to and during the time of fire front passage. [2]
- Using the model results as guidance with the concurrence of experiments and case studies, we can conclude that home ignitions are [not] likely unless flames and firebrand ignitions occur within 40 meters [130 feet] of the structure. [3]
- “Research has determined that during extreme wildfire conditions, a home’s characteristics (i.e. materials and design) in relation to the surrounding burning objects within 100 – 200 feet comprise the HIZ... Our post-burn examination revealed that most of the destroyed homes had green or unconsumed vegetation bordering the area of destruction... the home ignitions primarily occurred within the HIZ... Home ignitions due to the wildfire were primarily from firebrands igniting homes directly and producing spot fires across roads in vegetation that could subsequently spread to homes. We identified only six homes where the high intensity wildfire continued into the home ignition zone and was close enough to ignite homes (one on Brentwood Dr. and five on Trinity Dr.)... These incidents remind us to focus attention on the principal factors that contribute to a wildland-urban fire disaster—the home ignition zone.” [4]
- Create three concentric zones around the building. Zone 1, the zone closest to the building, normally has the greatest need for fuel modification with progressively less modification in the other two zones. The higher the Fire Severity Zone, the larger the concentric zones should be. Consult the local or state fire agency for assistance. [5]

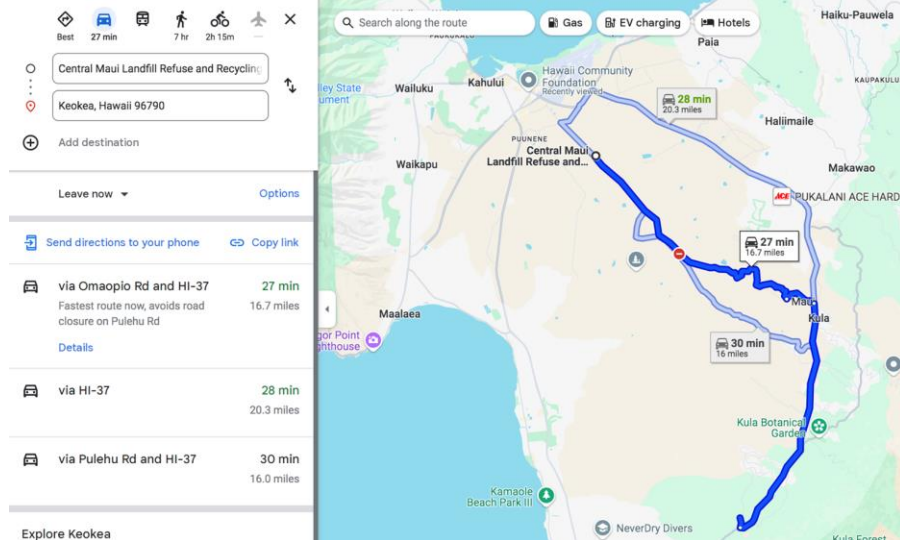
Create DEFENSIBLE SPACE around your home







Explore nearby Skyline Hawaii - Haleakala



Explore Keokea

So—What Do Kula Residents Do With Their Green Waste Instead?

- Nothing—it gets overgrown
- Sits in a compost pile
- Illegally burn it
- Throw it all in the gulch!



Kula Community Green Waste Bin Program

Kula is one of Hawaii's most overgrown, fire-prone communities, and even though the 2016 Community Wildfire Protection Plan for Upcountry lists the need to address the extreme fuel load, and the importance of providing increased access to green waste disposal facilities, Kula residents still don't have a viable option for disposing of their green waste.

To help provide our residents with tools to more easily care for their properties, Malama Kula founded the Kula Community Green Waste Bin Program, where we help fund green waste dumpsters in Kula and make them free for community use!

Currently, Malama Kula has facilitated **24 green waste bins** which have helped removed **934 cubic yards of green waste** that likely would have just been overgrown, or got tossed in the nearest gulch.



To help ensure the program's success, please be sure to:

- Keep the area tidy and clean
- Not dispose of fireweed (we recommend bagging it and throwing it away with household garbage)
- Green waste only—please no trash!
- No commercial use. This program is for residents only and is funded by private donations.

















Kula Curbside Kupuna Green Waste Pickup

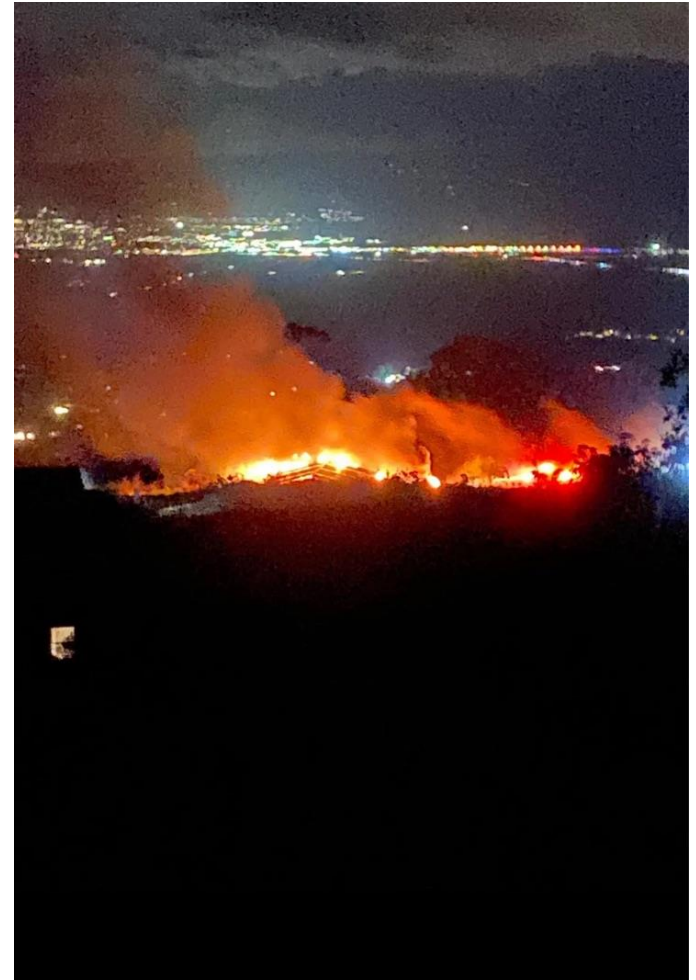
- Over 25% of Kula residents are over the age of 60
- Most don't have the physical strength, vehicle, or help to proactively maintain the property



July 11, 2024



September 20, 2024





Kyle Ellison
Executive Director
(808) 264-3005

www.malamakula.org

@malamakula

malamakula@gmail.com

“Mulch It, Don’t Gulch It”

ADEPT Committee

From: Malama Kula <malamakula@gmail.com>
Sent: Wednesday, December 4, 2024 1:26 AM
To: ADEPT Committee
Subject: Malama Kula Presentation for ADEPT Committee Meeting

Aloha,

[Here is a Dropbox link](#) where you can download the Powerpoint for the presentation by Malama Kula at Thursday's ADEPT Committee Meeting.

I've also included it here as an attachment, although it may be too large to open. If you have any trouble accessing it just let me know, and mahalo for the help.

--

Kyle Ellison

Mālama Kula | Executive Director

(808) 264-3005

www.malamakula.org