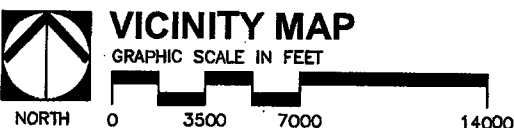


**AG. PRESERVE SITES**

TMK (2) 3-6-004: POR. 3

TMK (2) 3-6-002:1 & POR. 3



**AGRICULTURAL PRESERVE SITES**

BEING A PORTION OF LOT 6 OF THE WAIKAPU HEMA LARGE LOT SUBDIVISION AND PARCEL 1 AND PORTION OF PARCEL 3 OF TAX MAP KEY (2) 3-6-002

WAIKAPU, MAUI, HAWAII

SCALE: 1 IN.=2,000 FT.

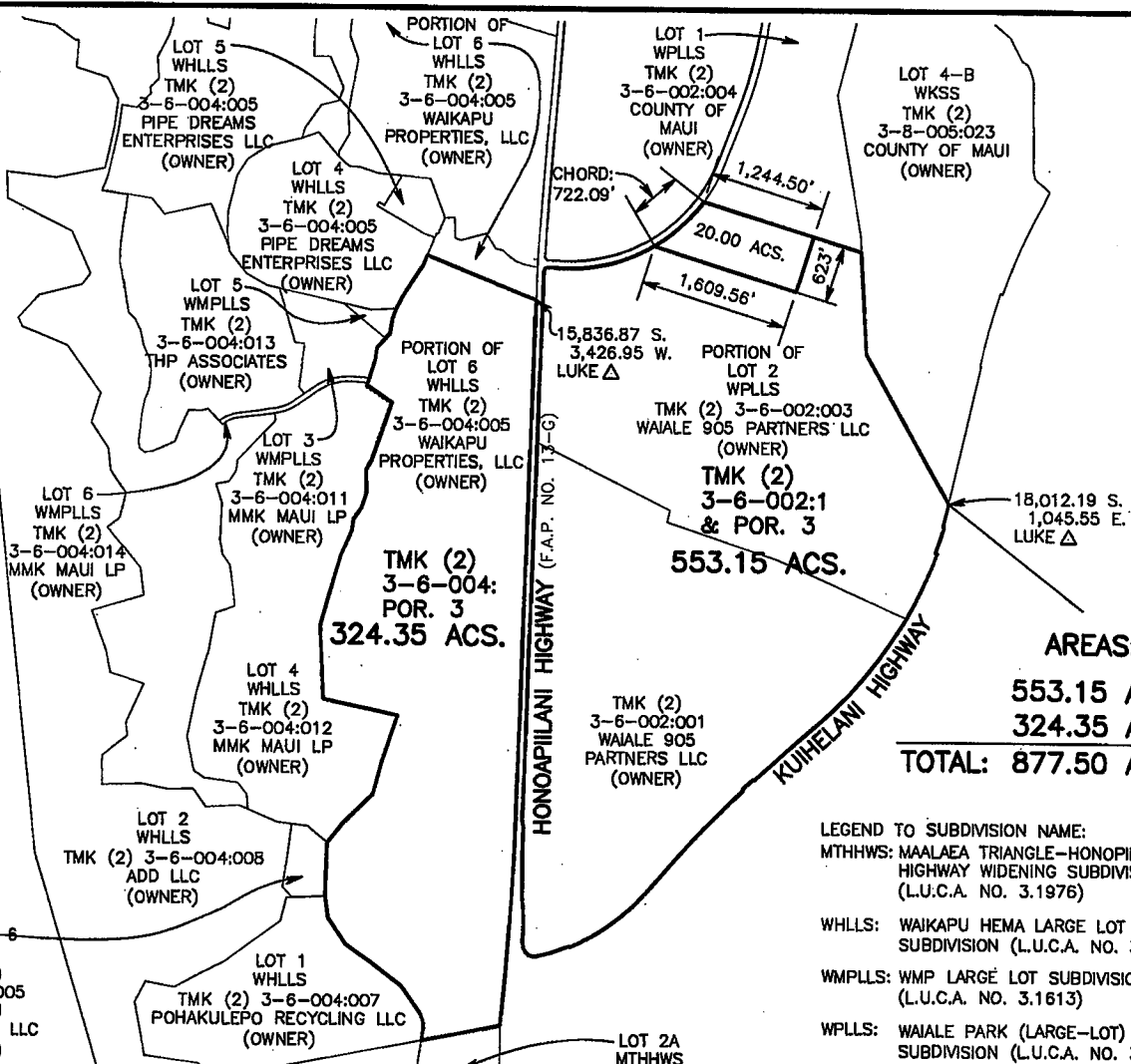
DATE: APRIL 25, 2019

PREPARED FOR:  
COUNTY OF MAUI  
200 S. HIGH STREET  
WAILUKU, HAWAII 96793

PREPARED BY:  
FUKUMOTO ENGINEERING, INC.  
1721 WILI PA LOOP, SUITE 203  
WAILUKU, HAWAII 96793

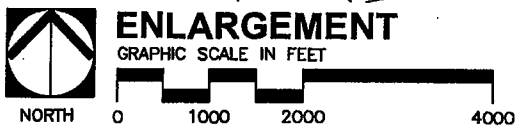
**NOTES:**

1. ALL AZIMUTHS AND RECORD COORDINATES REFER TO GOVERNMENT SURVEY TRIANGULATION STATION "LUKE" Δ
2. OWNERS OF ADJOINING PARCELS ARE FROM RECORDS IN THE TAX MAPS BRANCH.



**AREAS:**  
553.15 ACS.  
324.35 ACS.  
**TOTAL: 877.50 ACS.**

- LEGEND TO SUBDIVISION NAME:**
- MTHHWS: MAALAEA TRIANGLE-HONOPILANI HIGHWAY WIDENING SUBDIVISION (L.U.C.A. NO. 3.1976)
  - WHLLS: WAIKAPU HEMA LARGE LOT SUBDIVISION (L.U.C.A. NO. 3.1421)
  - WMLLS: WMP LARGE LOT SUBDIVISION (L.U.C.A. NO. 3.1613)
  - WPLLS: WAIKAPU PARK (LARGE-LOT) SUBDIVISION (L.U.C.A. NO. 3.2278)
  - WKSS: WALTER K. SCHENK SUBDIVISION (L.U.C.A. NO. 3.2286)



TAX MAP KEY (2) 3-6-004:POR. 003 & (2) 3-6-002:001 AND POR. 003

RECEIVED AT PSLU MEETING ON 6/26/19  
(Committee Chair)