

Council Chair
Mike White

Vice-Chair
Robert Carroll

Presiding Officer Pro Tempore
Stacy Crivello

Councilmembers
Alika Atay
Elle Cochran
Don S. Guzman
Riki Hokama
Kelly T. King
Yuki Lei K. Sugimura



COUNTY COUNCIL
COUNTY OF MAUI
200 S. HIGH STREET
WAILUKU, MAUI, HAWAII 96793
www.MauiCounty.us

January 12, 2018

RECEIVED

2018 JAN 12 AM 11: 58

OFFICE OF THE
COUNTY CLERK

The Honorable Mike White
Council Chair
County of Maui
Wailuku, Hawaii 96793

Dear Chair White:

SUBJECT: RESOLUTION URGING THE GOVERNOR AND THE STATE OF HAWAII DEPARTMENT OF TRANSPORTATION TO TEMPORARILY SUSPEND THE HONOAPILANI HIGHWAY IMPROVEMENTS, KAPUNAKEA TO KEAWE, AND LAHAINA BYPASS PHASE 1B-2 PROJECTS (PAF 18-004)

May I request the attached proposed resolution, entitled "RESOLUTION URGING THE GOVERNOR AND THE STATE OF HAWAII DEPARTMENT OF TRANSPORTATION TO TEMPORARILY SUSPEND THE HONOAPILANI HIGHWAY IMPROVEMENTS, KAPUNAKEA TO KEAWE, AND LAHAINA BYPASS PHASE 1B-2 PROJECTS," be placed on the next Council meeting agenda.

Sincerely,

A handwritten signature in black ink that reads "Don S. Guzman".

DON S. GUZMAN
Councilmember

paf:mcc:18-004b

Enclosure

COUNTY COMMUNICATION NO. 18-33

Resolution

No. _____

URGING THE GOVERNOR AND THE STATE OF
HAWAII DEPARTMENT OF TRANSPORTATION
TO TEMPORARILY SUSPEND THE
HONOAPIILANI HIGHWAY IMPROVEMENTS,
KAPUNAKEA TO KEAWE, AND LAHAINA
BYPASS PHASE 1B-2 PROJECTS

WHEREAS, on December 14, 2017, the State of Hawaii Department of Transportation (“HDOT”) announced updates to adjust traffic conditions at the intersection of Honoapiilani Highway and Keawe Street in a project entitled “Honoapiilani Highway Improvements, Kapunakea to Keawe”; and

WHEREAS, the project proposes eliminating an existing northbound lane on Honoapiilani Highway toward Kaanapali to add a continuous right turn lane, and increasing traffic flow onto Keawe Street by adding an additional left turn lane off of Honoapiilani Highway; and

WHEREAS, HDOT also announced plans to redirect traffic from the existing Honoapiilani Highway onto the mauka bypass beginning in March 2018 upon the completion of the “Lahaina Bypass Phase 1B-2” project; and

WHEREAS, the purpose of the Lahaina bypass project is to relieve traffic congestion for residents and visitors by providing multiple options for through traffic to and from West Maui; and

WHEREAS, HDOT proposes the projects will direct an estimated 70 percent of traffic through the Lahaina Bypass from Olowalu to Keawe Street; and

WHEREAS, previous traffic estimates may not account for the addition of recent development such as the 114 - condo unit Opukea residential complex; the 22-acre, 203 unit residential Kahoma Village subdivision; the Kahoma Homes residential subdivision; a new Walgreens; the mauka expansion of the Keawe Business Center; the 30-acre, 600-unit Honua Kai Resort and Spa; the 26-acre Westin Kaanapali Ocean Resort Villas Timeshare complex, which are all in close proximity to Keawe Street; and areas north of Keawe Street; and

Resolution No. _____

WHEREAS, redirecting traffic from the existing Honoapiilani Highway and increasing the flow of traffic at the intersection of Honoapiilani Highway and Keawe Street will have critical impacts on residents, visitors and businesses, creating gridlock and safety concerns; and

WHEREAS, the projections of use and the design as referenced in "Exhibit A", will highly impact the proposed feeder-roads, including County-owned Keawe Street and Lahainaluna Road, and privately owned Hokiokio Place and Kai Hele Ku Street; and

WHEREAS, time is of the essence to press pause due to the HDOT announcement that construction work at the Keawe street and Honoapiilani Highway intersection will commence on Tuesday, January 16, 2018; and

WHEREAS, previous planning documents did not include information relating to the proposed traffic changes for sufficient public review and input; and

WHEREAS, pursuant to section 46-1.5, Hawaii Revised Statutes, the County has the power to sue and be sued in its corporate name; and

WHEREAS, the County may seek injunctive relief pursuant to Rule 65, Hawaii Rules of Civil Procedure, to allow time for all stakeholders to discuss possible alternatives; now, therefore,

BE IT RESOLVED by the Council of the County of Maui:

1. That it does hereby urge the Governor and the Hawaii Department of Transportation to temporarily suspend the Honoapiilani Highway Improvements, Kapunakea to Keawe, and Lahaina Bypass Phase 1B-2 Projects; and
2. That it proposes to work with the Governor and Hawaii Department of Transportation to retain and preserve the coastal two-way Honoapiilani Highway as a transportation thoroughfare ; and

Resolution No. _____

3. That if the Hawaii Department of Transportation does not agree to voluntarily suspend construction that it may consider the filing of an injunction pursuant to Rule 65, Hawaii Rules of Civil Procedure; and
4. That certified copies of this resolution be transmitted to the Honorable David Ige, Governor, State of Hawaii; Senator Brian E. Schatz; Senator Mazie K. Hirono; Representative Tulsi Gabbard; Representative Colleen Hanabusa; Senator Rosalyn H. Baker; Senator Kalani J. English; Senator Gilbert S.C. Keith-Agaran; Representative Lynn DeCoite; Representative Kaniela Ing; Representative Angus L.K. McKelvey; Representative Joseph M. Souki; Representative Justin H. Woodson; Representative Kyle T. Yamashita; Director, Hawaii Department of Transportation; the Honorable Alan M. Arakawa, Mayor, County of Maui; the Director of Public Works, County of Maui; and the Director of Transportation, County of Maui.

APPROVED AS TO FORM AND LEGALITY

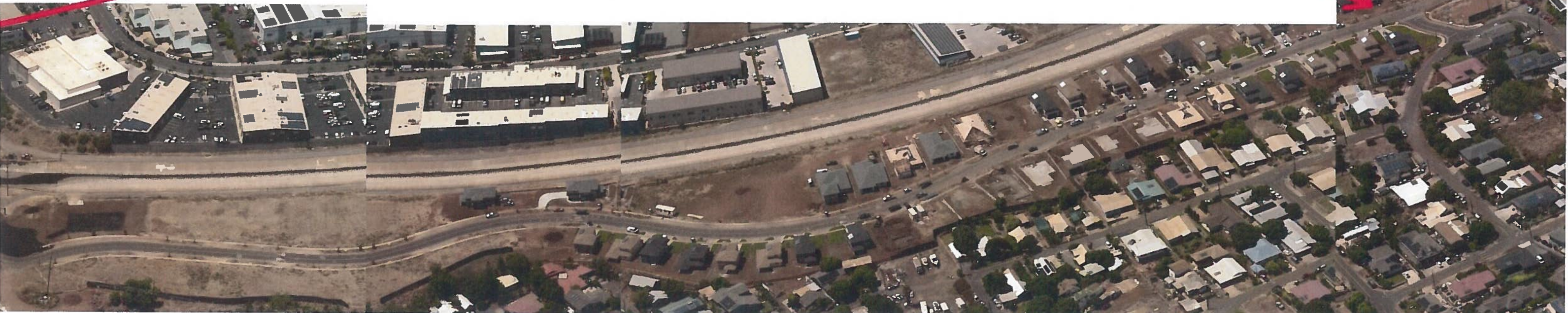
Deputy Corporation Counsel
County of Maui

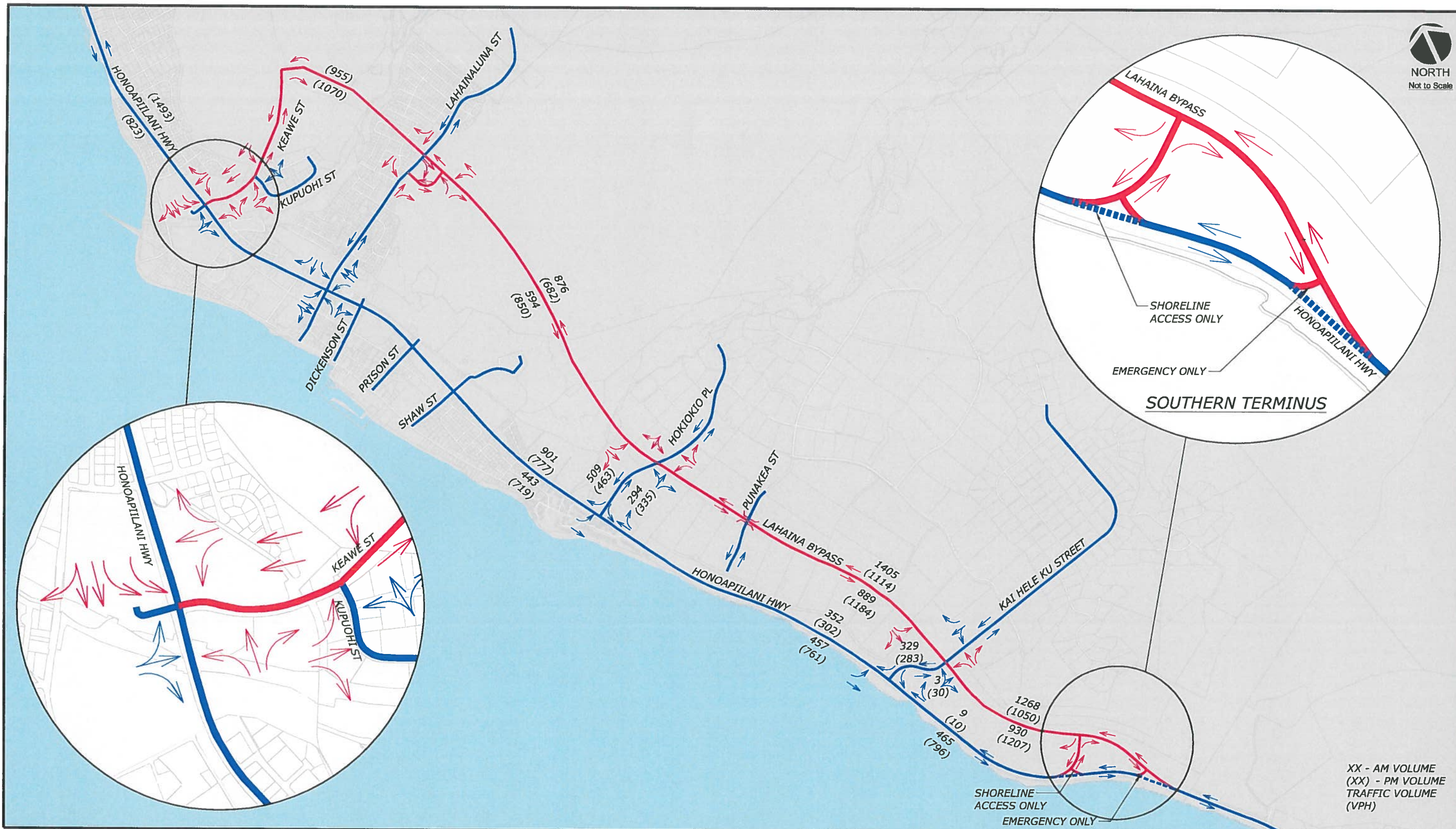
paf:mcc:18-004c

Note all of the connections to Keawe Street

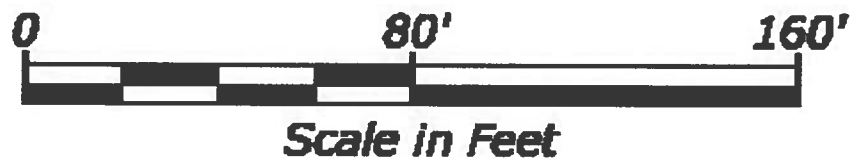


**also important to remember the connection this West Maui
d Company project has to Keawe Street. Even though it
nects to Kapua Camp, that only leads to Lahainaluna Road...**



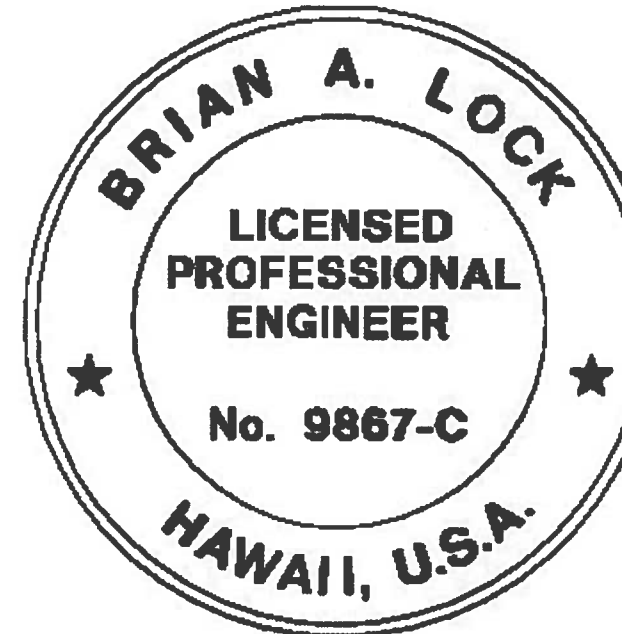


TRAFFIC COUNTS



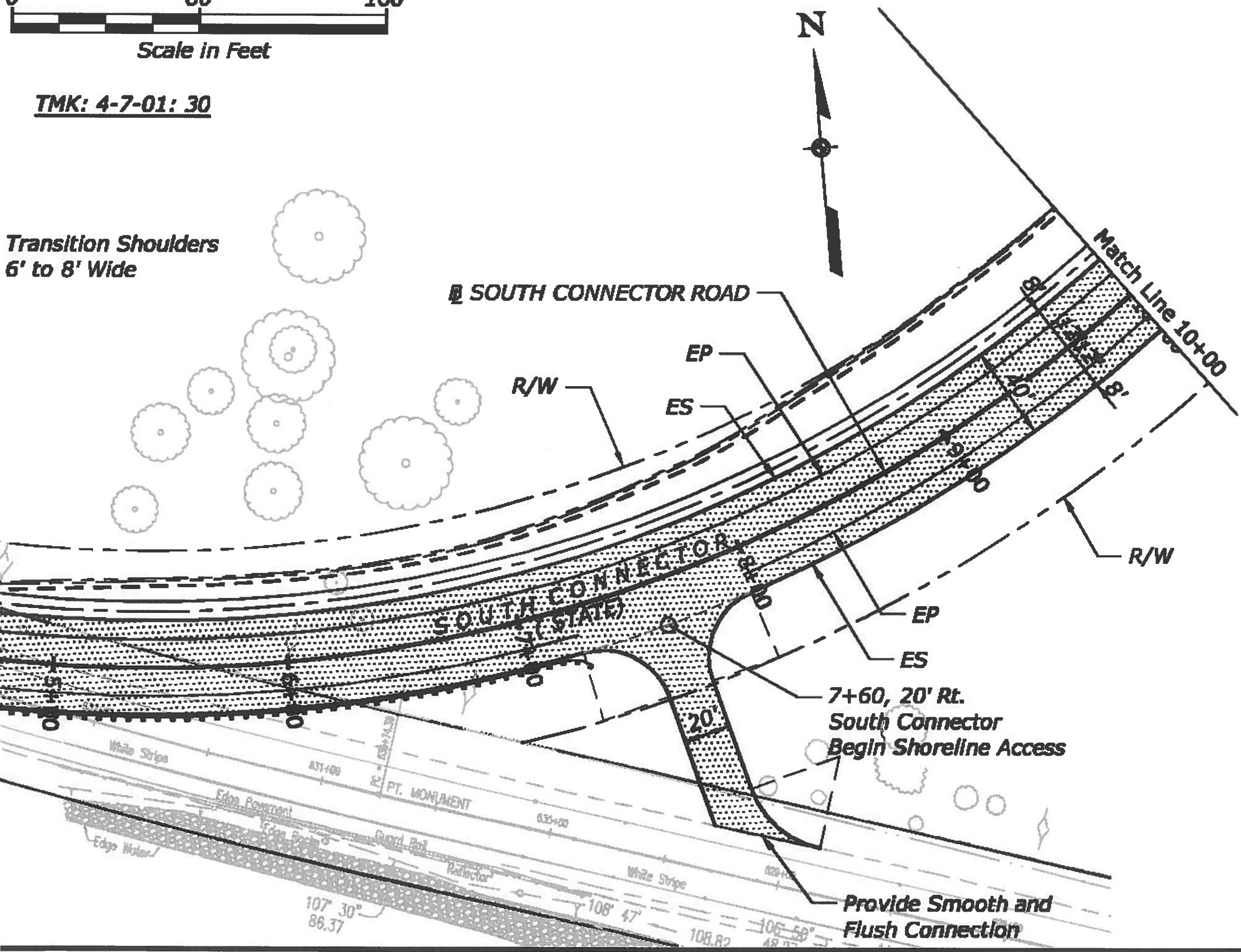
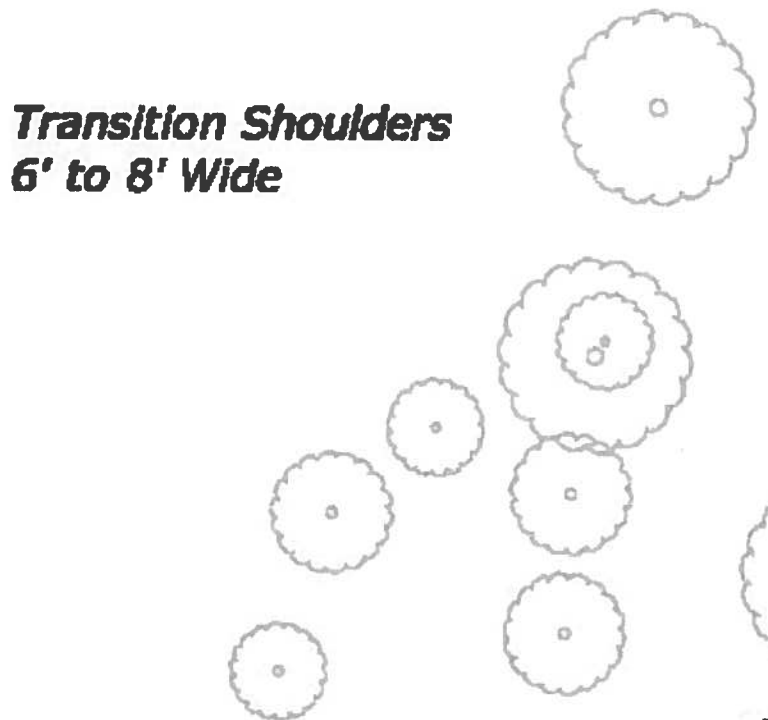
TMK: 4-7-01: 30

STATE	PROJECT	SHEET NO
HI	HI STP SR 30(1)	R21



THIS WORK WAS PREPARED BY ME OR UNDER MY SUPERVISION.

WILSON OKAMOTO CORPORATION APRIL 30, 2018 LIC. EXP. DATE



LOWALU TO PUAMANA CONCEPTUAL COASTAL PARK PLAN

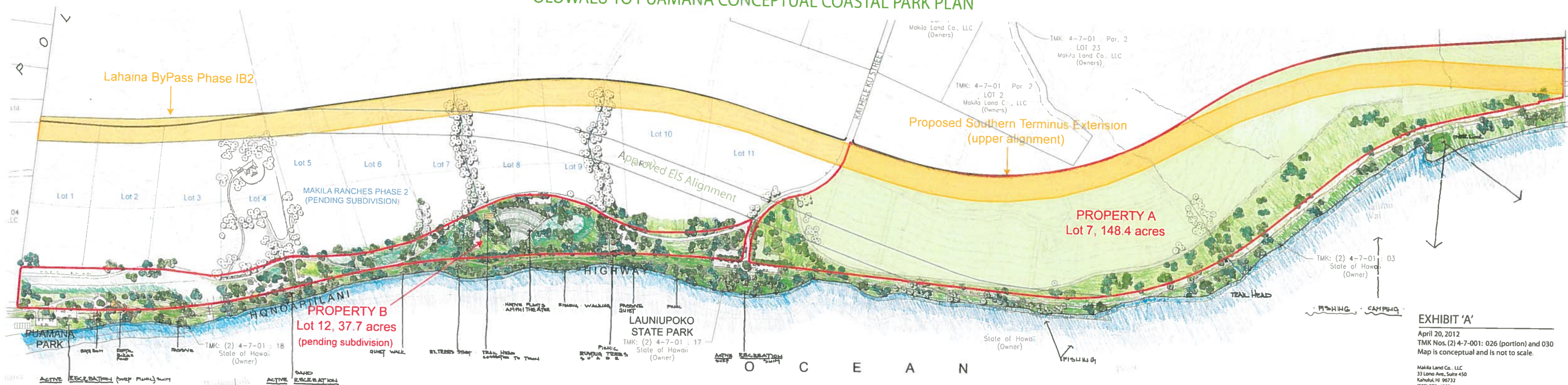


EXHIBIT 'A'
 April 20, 2012
 TMK Nos. (2) 4-7-001: 026 (portion) and 030
 Map is conceptual and is not to scale.
 Makila Land Co., LLC
 33 Lono Ave., Suite 450
 Kahului, HI 96732
 (808) 877-4202