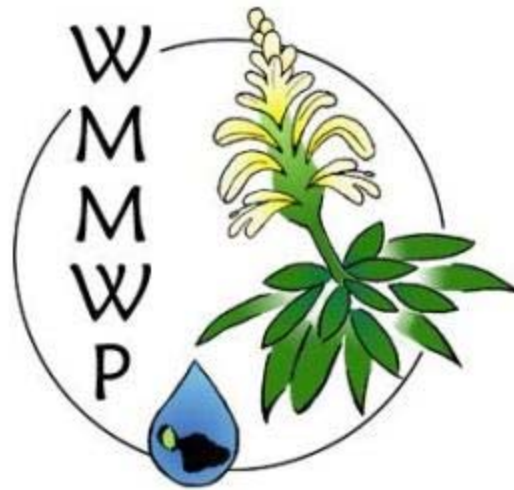


Maui County Council's Water Resources Committee

March 8th, 2017

West Maui Mountains Watershed Partnership



Our Partnership

- Formed in 1998
- 13 Partners
- ~ 50,000 acres
- Encompass 10% of Maui's land area

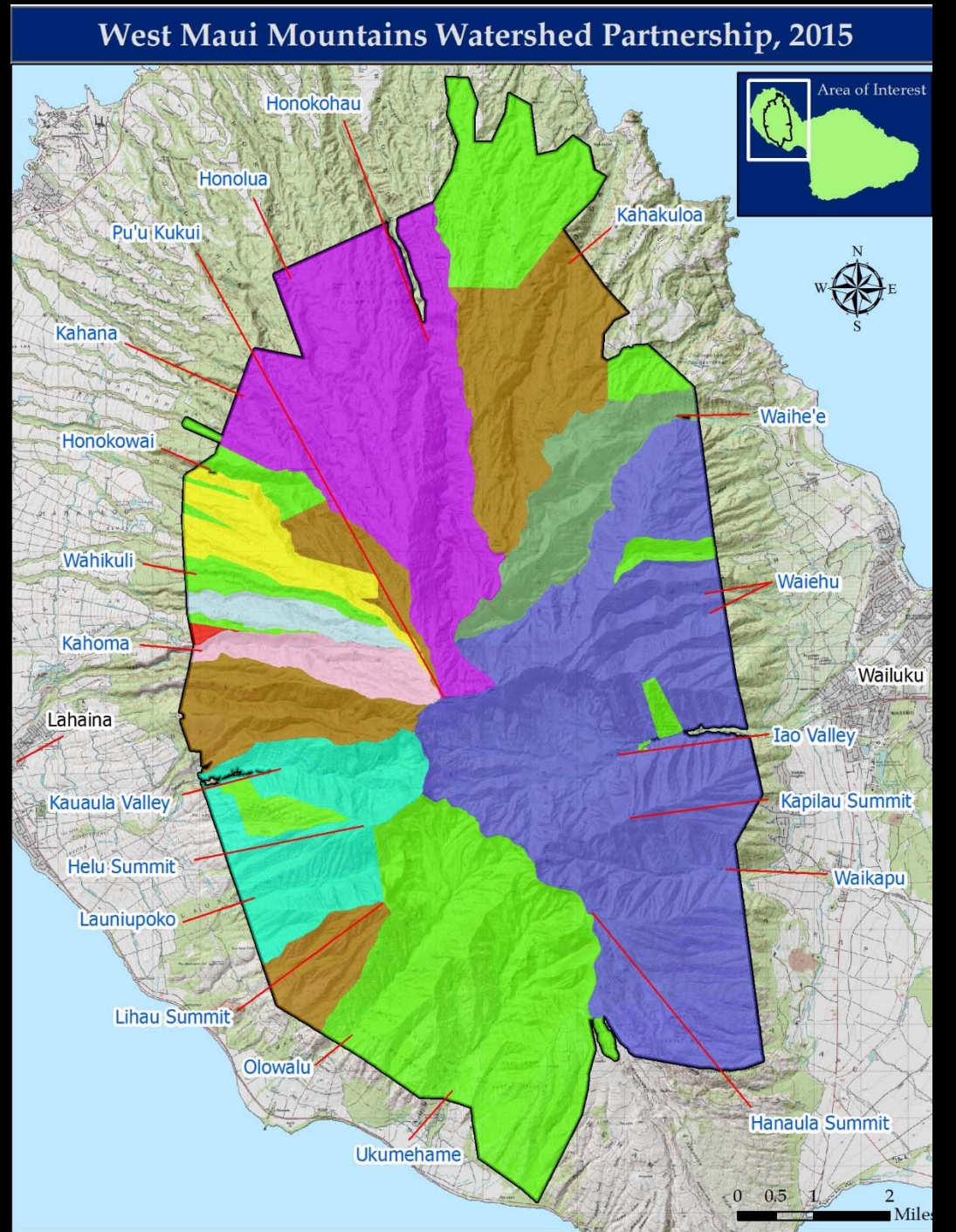
Landowning Partners

WMMWP 2015

- Dept. of Water Supply (Maui County)
- Kaanapali Land Mgmt. Corp./The Nature Conservancy
- Kahoma Land Company, LLC
- Kahoma Land Holdings, LLC
- Kamehameha Schools
- Makila Land Company, LLC
- Maui Land & Pineapple Co., Inc.
- State of Hawaii - Natural Area Reserves
- State of Hawaii - Forest Reserves
- Wailuku Water Company, LLC

Associate Partners

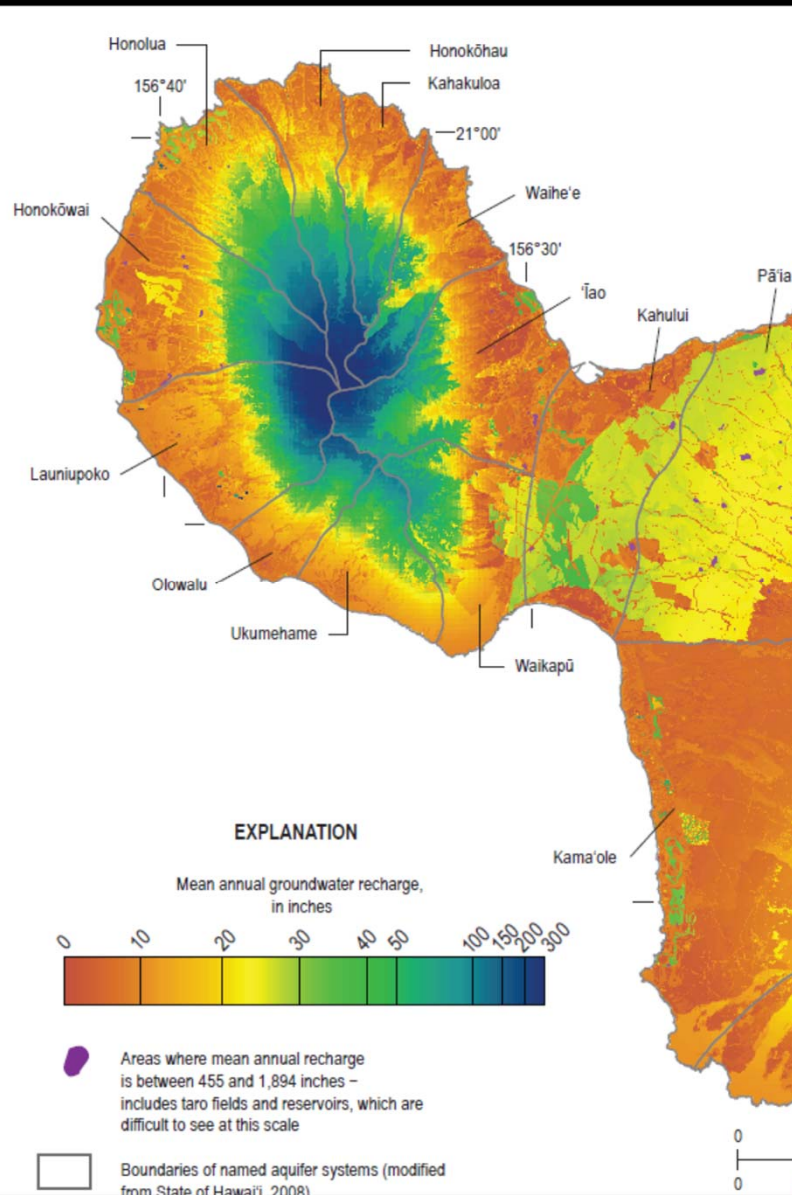
- US Fish and Wildlife Service
- Tri-Isle RC&D



*Source Water Resources &
Forest Ecological Functions*



Priority Water Recharge Area



*Water to Most of Maui's
People & Economy*

77%

*of Dept. of Water Supply's water
is provided by WMMWP
aquifers & streams*

*Fog Drip off forest structure adds
up to 30% more to
precipitation totals*

Average annual recharge from 1978-2007, USGS- Johnson et al.

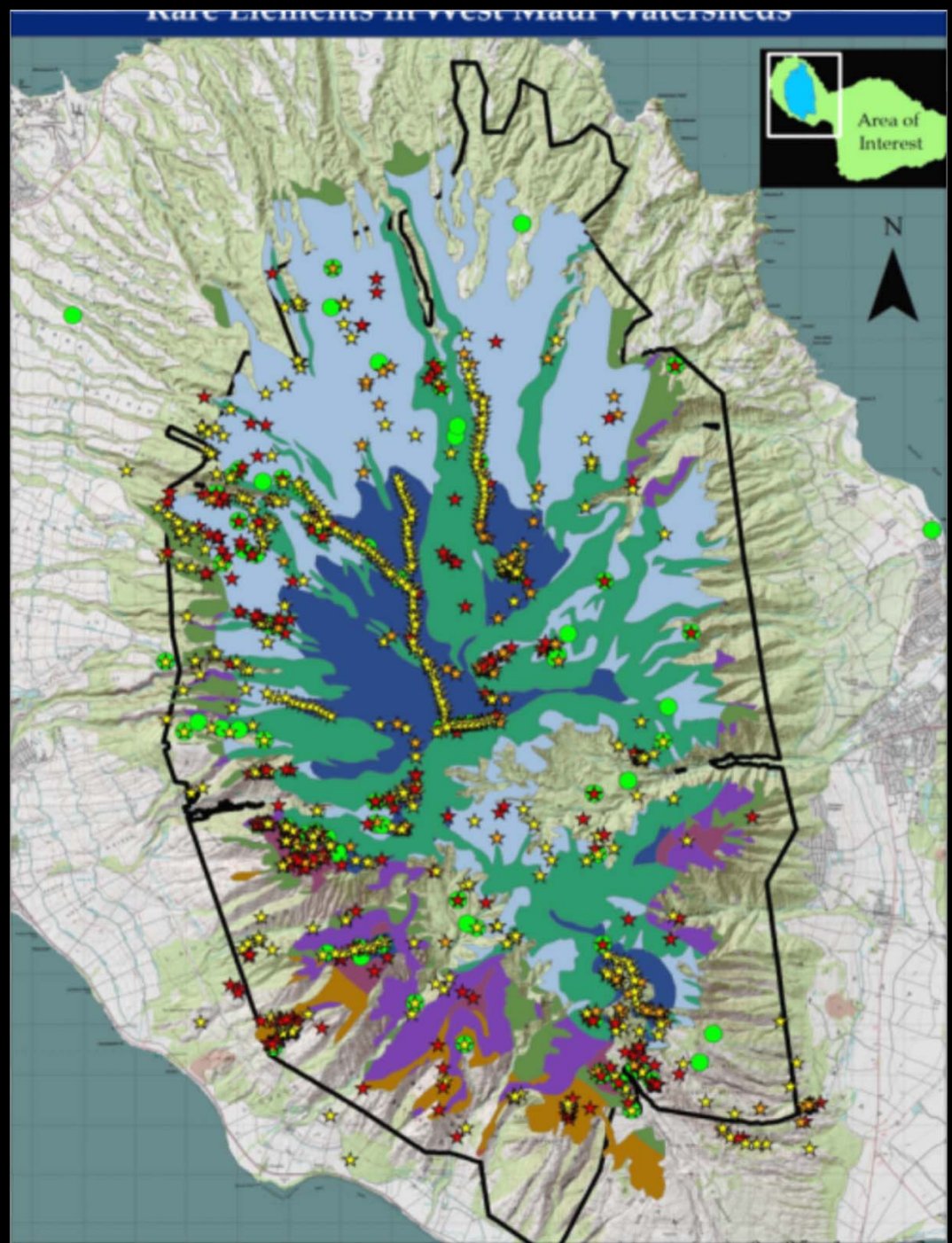


Forest Resources

*70%
Native Dominated
Communities*

*170
Endangered &
Rare Species*

*50%
Critical Habitat for
Endangered Plants:*



Native Fauna



Native Flora





© WMMWP



Field Crew



WMMWP Programs

1. Invasive animal management
2. Invasive plant control
3. Human activities management
4. Wildfire management
5. Water and watershed monitoring
6. Protection of rare species & habitat
7. Public education and awareness
8. Watershed management coordination

West Maui Mountains Watershed Management Plan



Prepared by



West Maui Mountains
Watershed Partnership

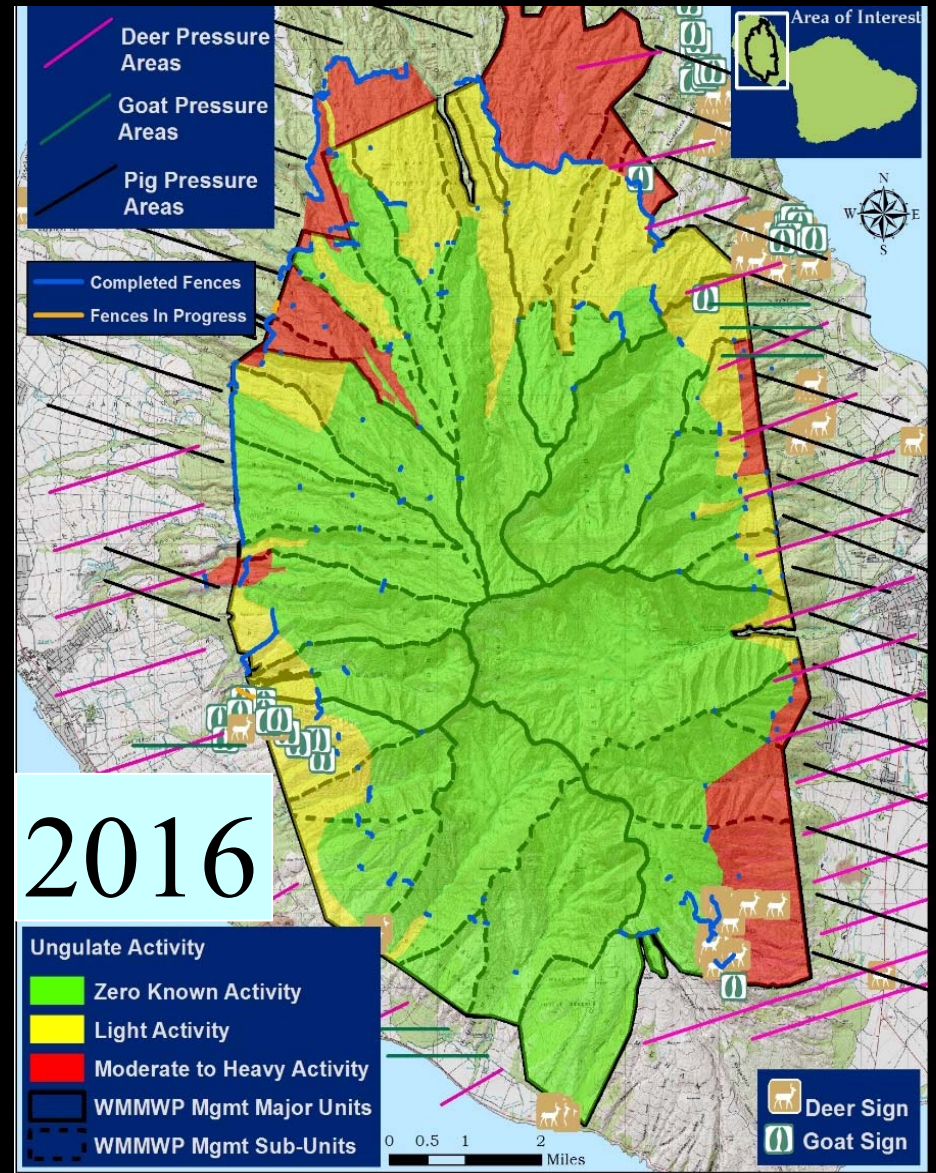
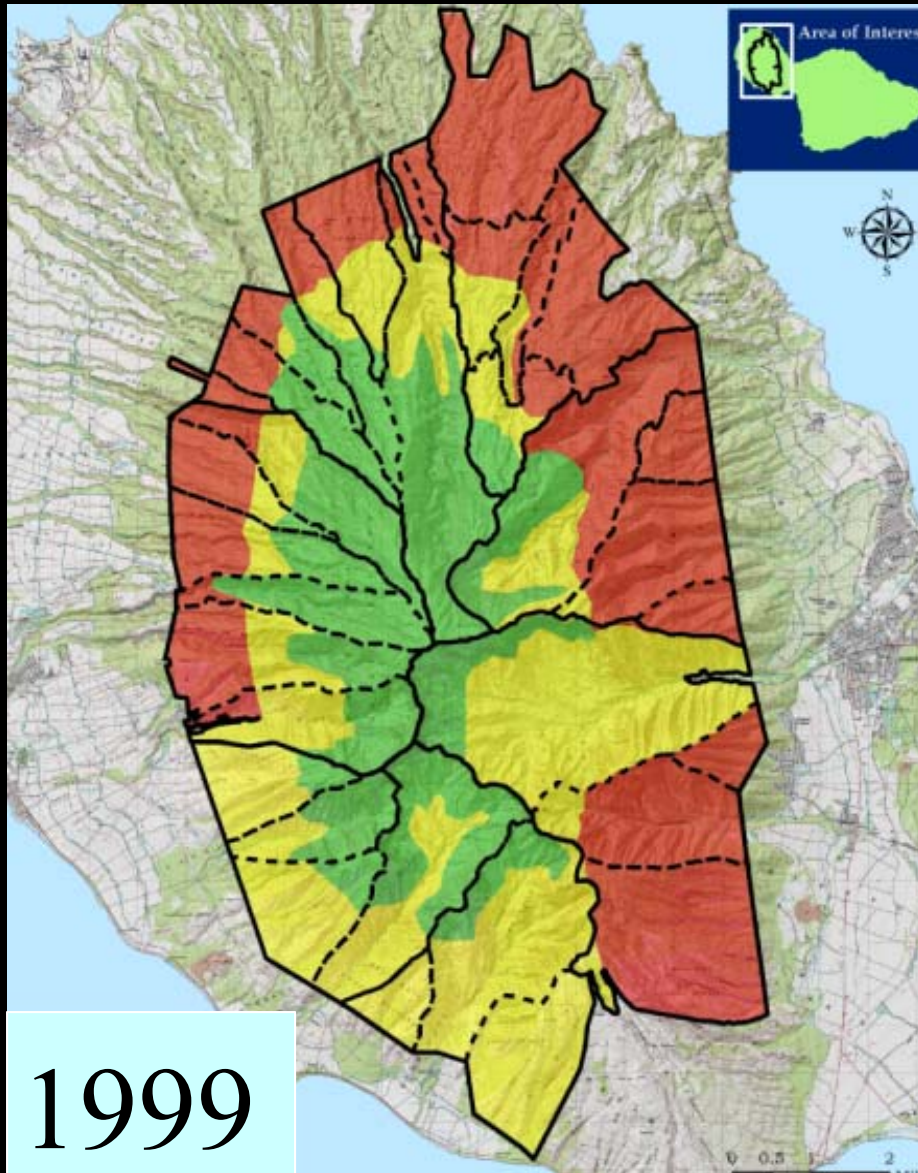
2013

Feral Ungulates

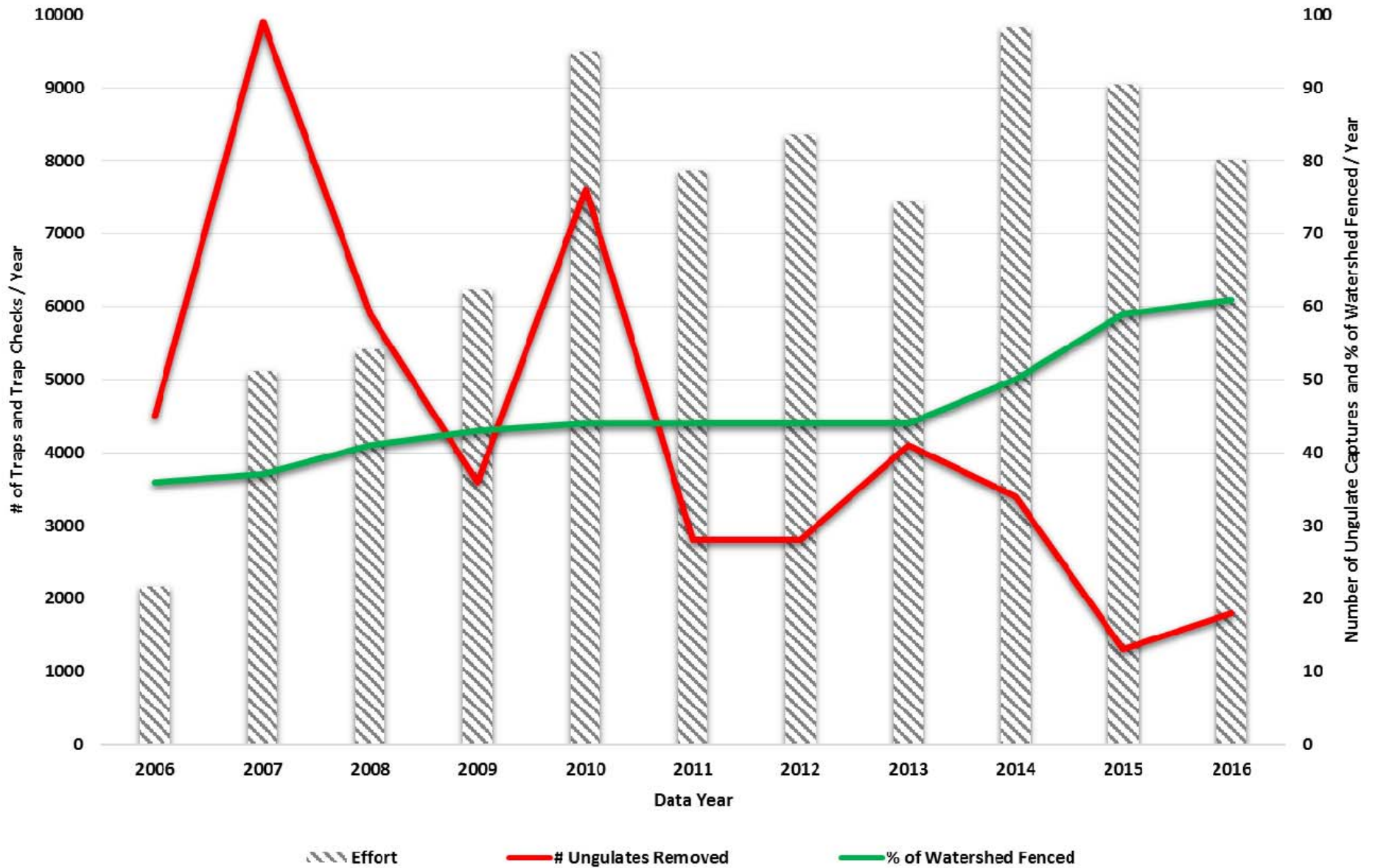


Ungulate Control

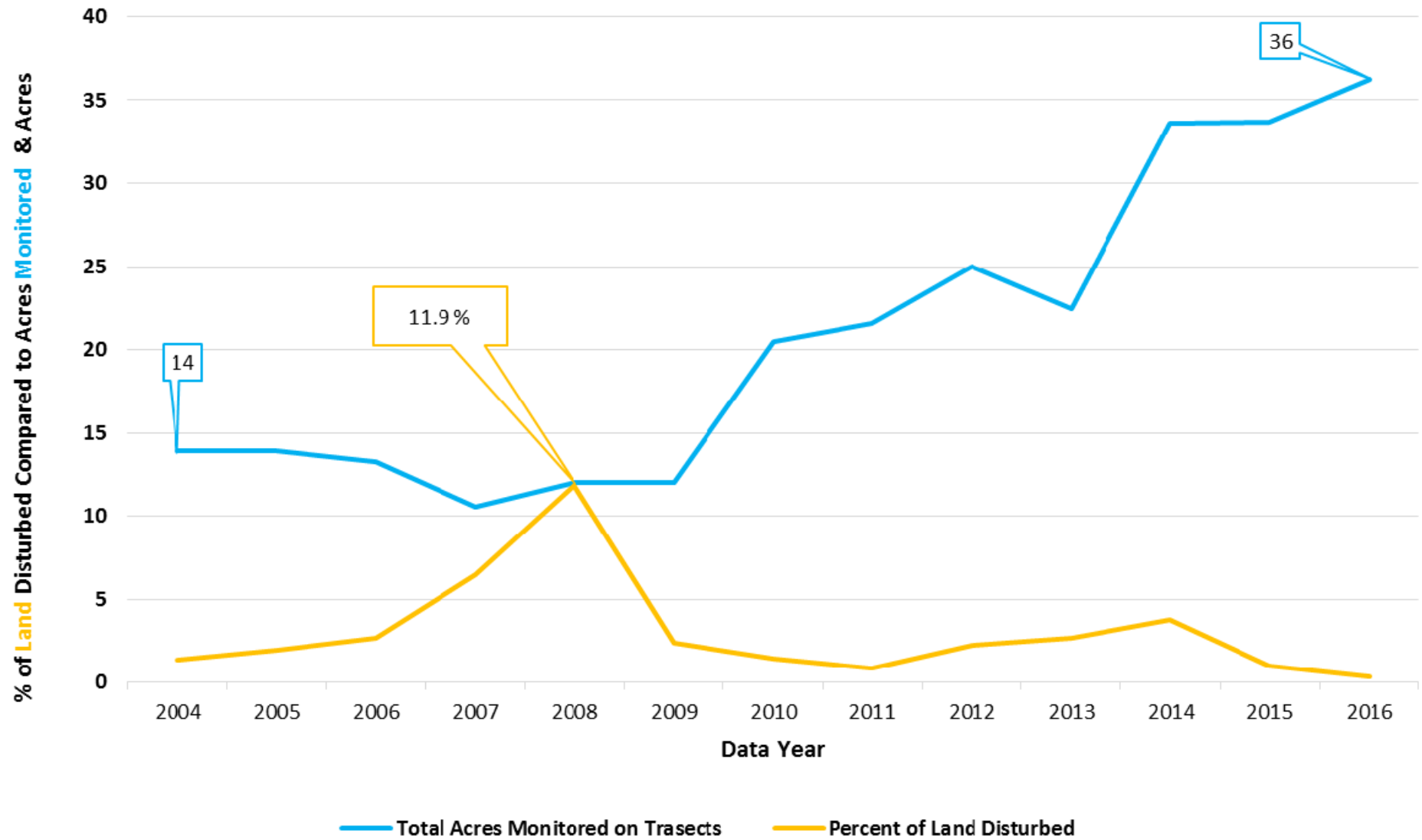
Ungulate Free Little to Moderate Heavy Activity



WMMWP Efforts in Ungulate Control 2006-2016



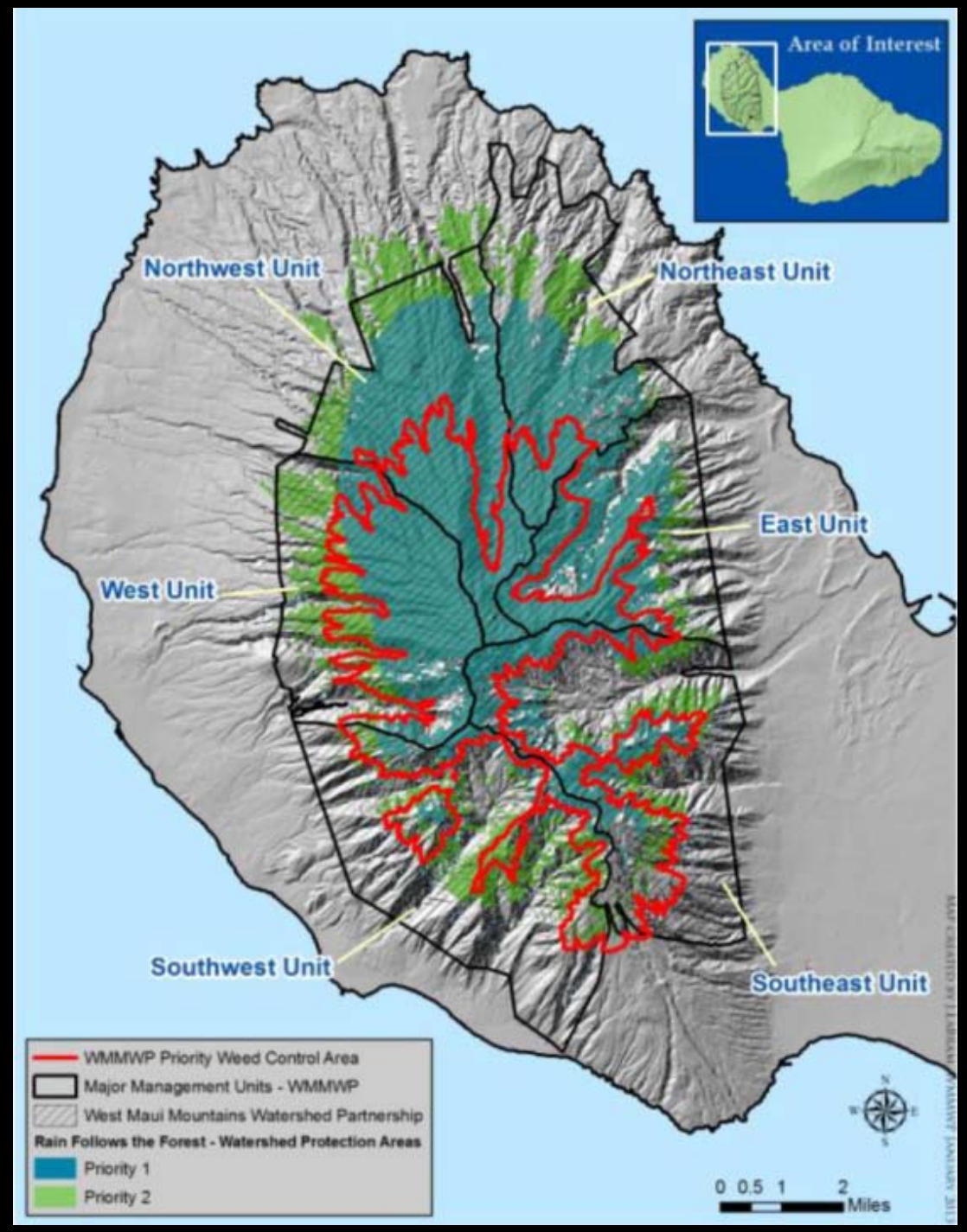
WMMWP Trends in Monitoring Transect Ungulate Activity 2004-2016



Invasive Weed Control

Prioritizes worst watershed modifying weeds

Focuses on lands above 2800 ft. in elevation



Cane Tibouchina:
Tibouchina herbacea



Australian Tree Fern:
Cyathea cooperi.

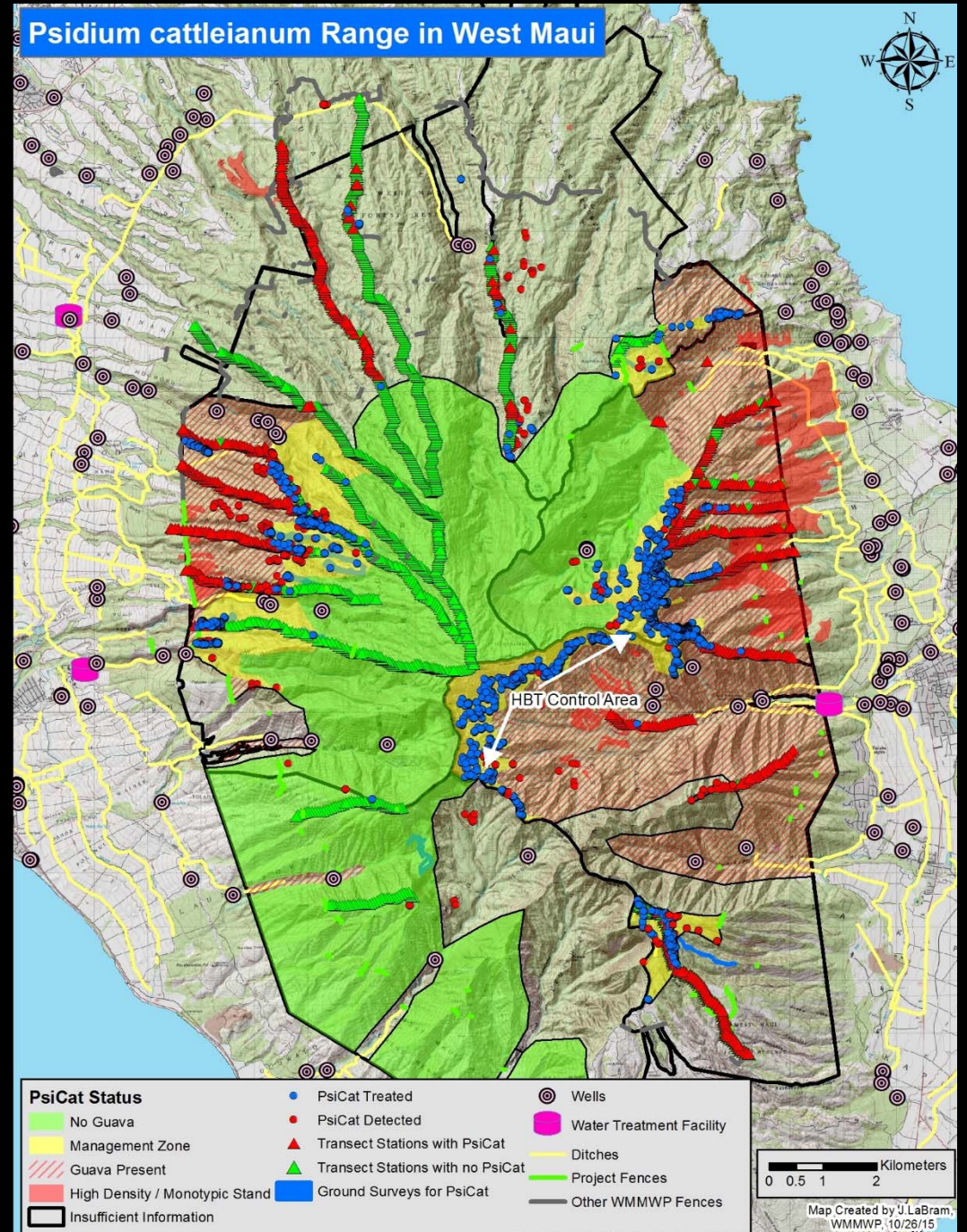


Koster's Curse:
Clidemia hirta



Strawberry Guava

- *Water Hog*
- *4,076 acres managed*
 - *Ground control*
 - *Aerial via HBT*
 - *Biological control*
 - *Public Involvement*



Imagine the
Storm of
Sept 13th & 14th
without
watershed
management



Water and debris toppled fences

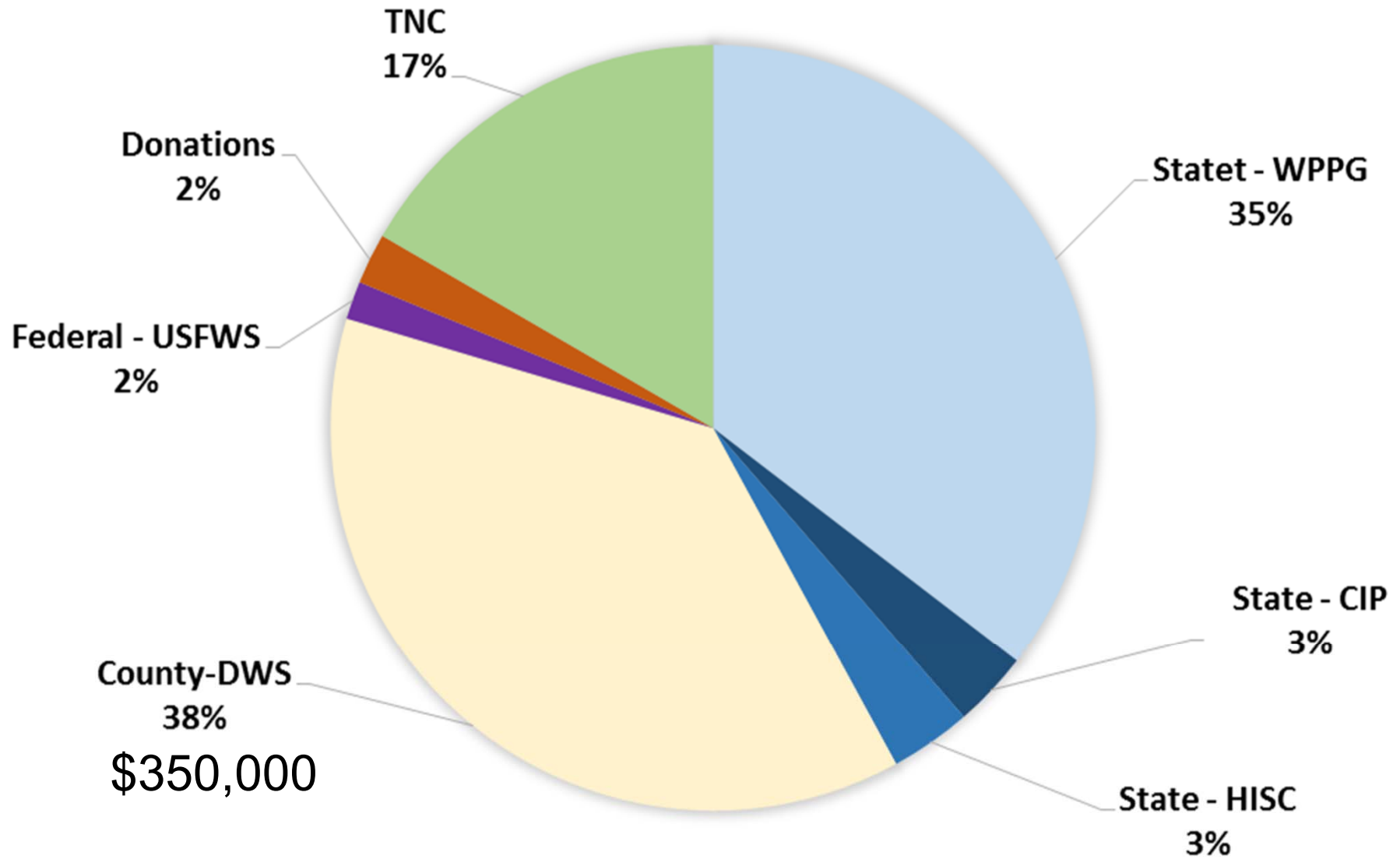


Old erosion accelerated

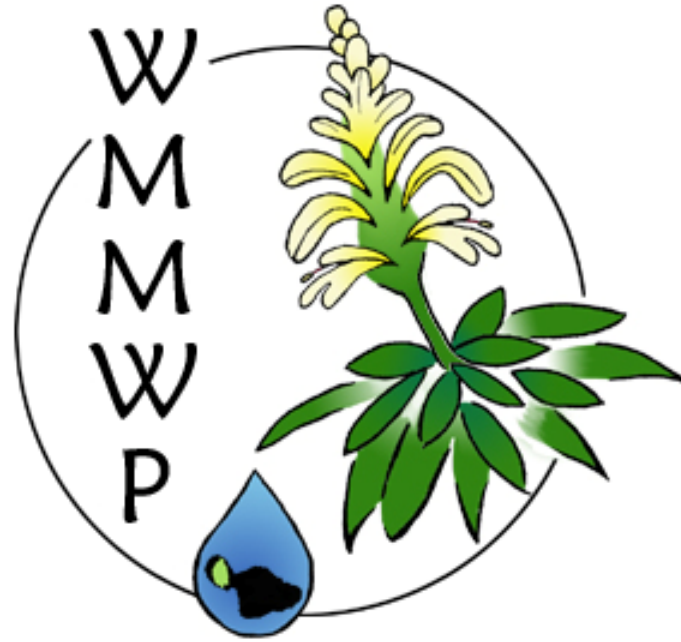




WMMWP FUNDING SOURCES FY17



Mahalo!!!!



West Maui Mountains
Watershed Partnership