

COUNTY OF MAUI  
DEPT. OF ENVIRONMENTAL MANAGEMENT

# FY25-FY26 CIP PROJECT UPDATES



Water and Infrastructure Committee

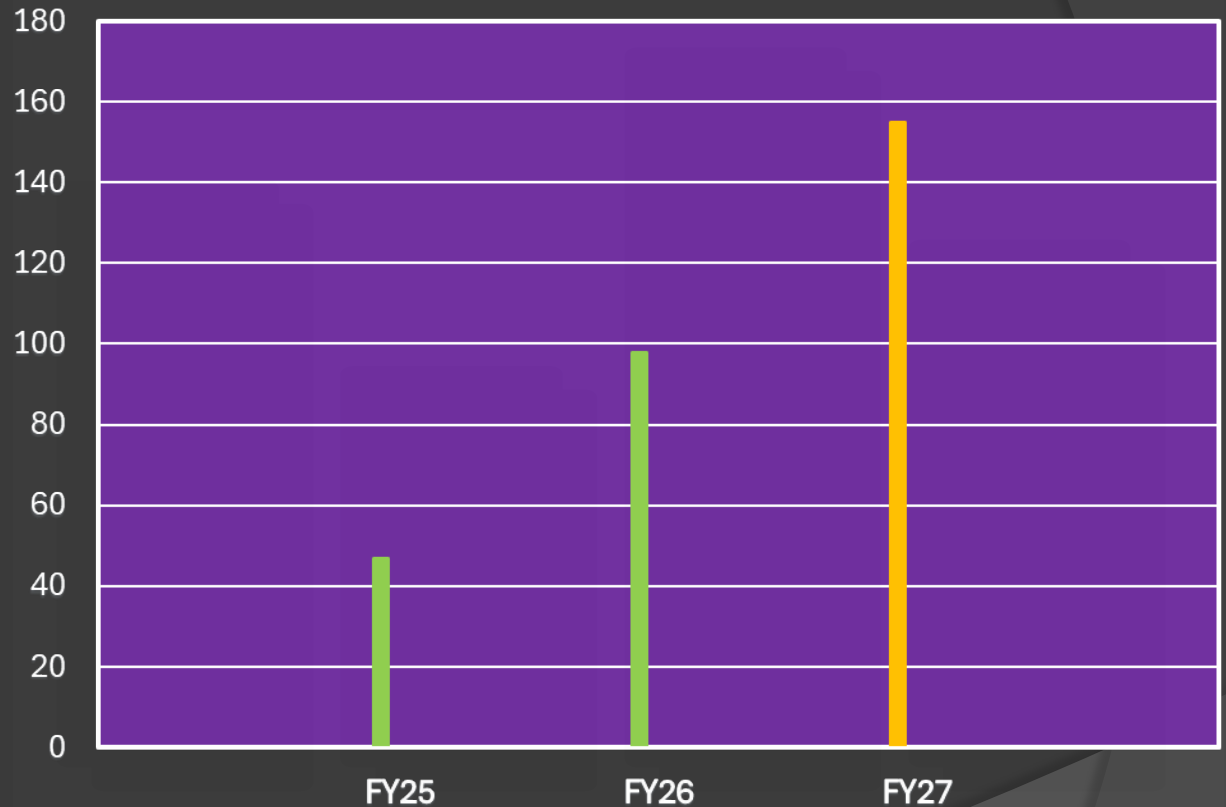
March 9, 2026

# DEM Total Proposed CIP Budget by FY

FY2025 = \$46.9 M

FY2026 = \$98.0 M

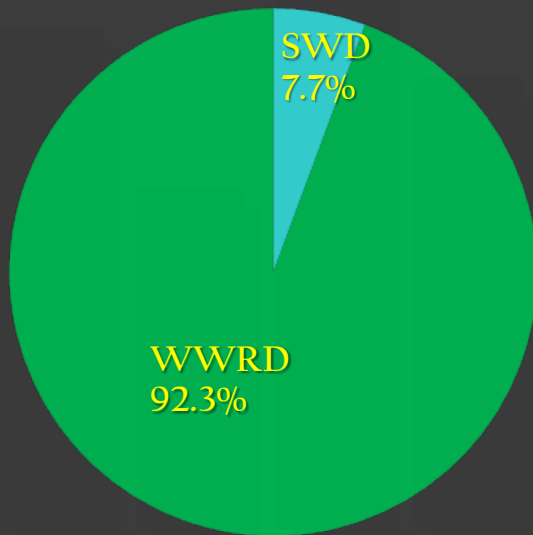
FY2027 = \$155.0 M



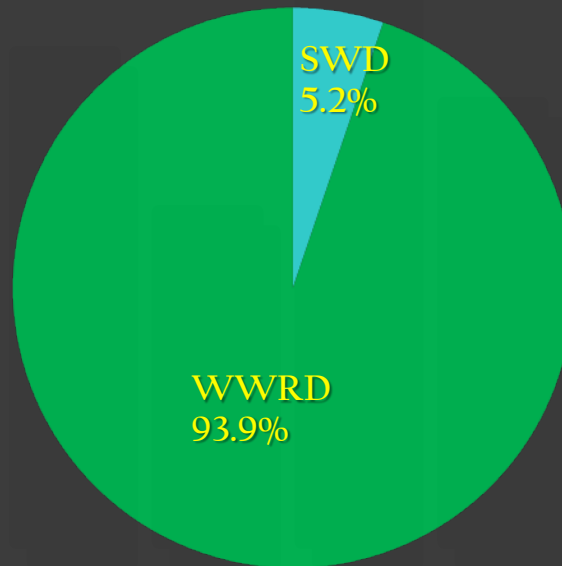
FY27 budget amount is anticipated and may change due to various reasons.

# FY25-FY27 CIP Budget by Division

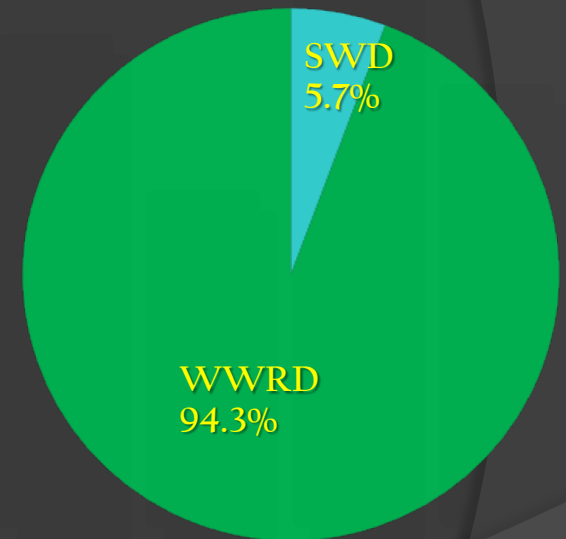
FY25



FY26



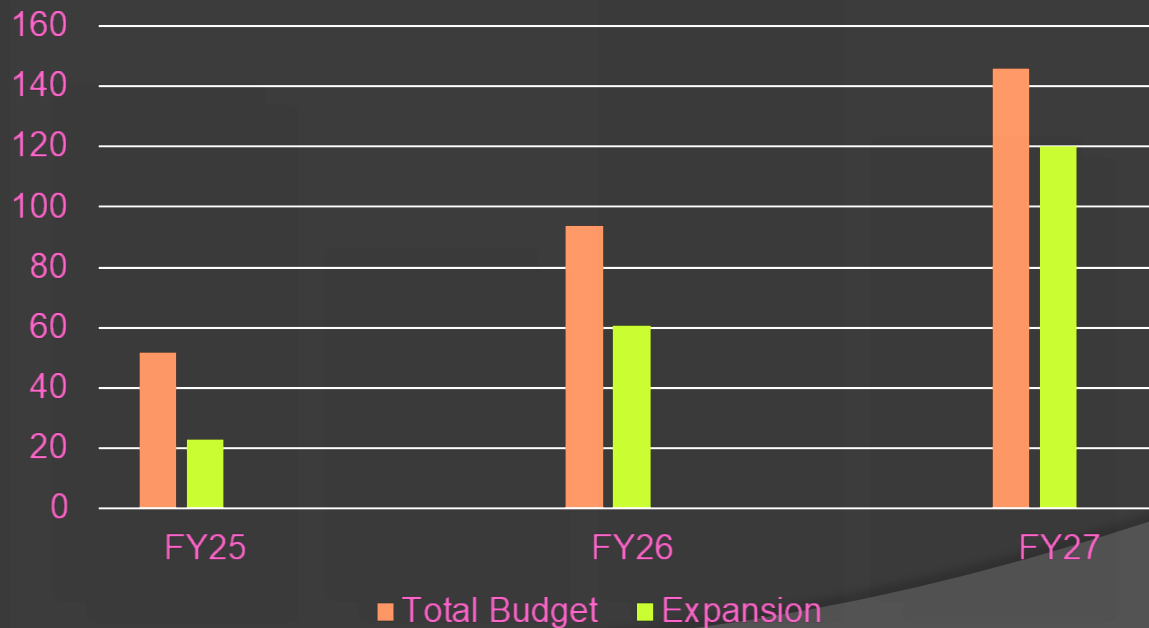
FY27



# WWRD FY25-FY27 CIP Projects

- ◎ Approx. 30.3% of total CIP budget are regulatory or maintenance related projects
- ◎ Approx. 69.7% of total CIP budget are expansion or new infrastructure related projects

WWRD Expansion Projects by FY



# WWRD FY25 CIP PROJECT UPDATES

## FY 2025 (WWRD)

- North Kihei Mauka Transmission System – Design 64% Complete; Const. in FY28
- Liloa Drive Recycled Water Line
- N. Kihei R-1 Dist. Expansion– Design Consultant Selected (FA); NTP (TBD)
- Kihei PS#3 Modification – Design Consultant Selected (KJ); NTP (TBD)
- Kihei PS#8 Modification – Design Consultant Selected (KJ); NTP (TBD)
- Kihei WWRF UV System Upgrade – Design Consultant Selected (FA); NTP 1/5/26
- Lanai WWRF Facility Plan – Design 20% Complete
- Kaunakakai Effluent FM Replacement – Design Consultant Selected (BC); NTP (TBD)
- Paia PS Modification – Design 23% Complete; Const. in FY28
- Sprecklesville FM Replacement – Const. Contract Awarded (ROJAC); Mobilization.
- Wailuku PS Modifications – Design 10% Complete; Const. in FY27
- Napili FM#1 Replacement – Const. Contract Awarded (Alpha); NTP (TBD)
- Honokowai R-1 Water Dist. System – Design Consultant Selected (FA); NTP 1/5/26
- Lahaina R-1 FM (300' to 700') – Design Consultant Selected (FA); NTP 1/5/26

# WWRD FY26 CIP PROJECT UPDATES

## FY 2026 (WWRD)

- N. Kihei Mauka Transmission Sys. - Const. Contract Awarded (Alpha); NTP (TBD)
- Kihei #6 FM Replacement – Design 58% Complete; Est. Bid Date April 2026
- Kihei PS#4 Modification – Design 24% Complete; Est. Bid Date Mid 2026
- Kihei PS#5 Modification & FM Replacement – Design 40% Complete; Est. Bid Date Mid 2026
- Kihei PS#6 Modification – QBS Process to Select Design Consultant; Const. In FY28
- Kihei PS#7 Relocation – Design 28% Complete; Est. Bid Date Late 2026
- Kaiola Pl. Sewer Extension – Design 62% Complete; Est. Bid Date Mid/Late 2026
- South Kihei Capacity Sewer Upgrades – Design Consultant Selected (KJ); Proposal in Progress
- Lanai WWRF Treatment Pond Renovations – Const. 64% Complete
- Waiko Road Subd. Sewer System – Design 30% Complete; Est. Bid Date April 2026
- Upper Waiko Road Sewer Exten. – Design 27% Complete; Est. Bid Date April 2026
- Central Maui WWRF – Design 60% Complete; Est. Bid Date Mid 2027
- Kahului WWRF Shoreline Erosion Protection – Design Consultant Selected (Mofatt & Nichol); Proposal in Progress

# WWRD FY26 CIP PROJECT UPDATES

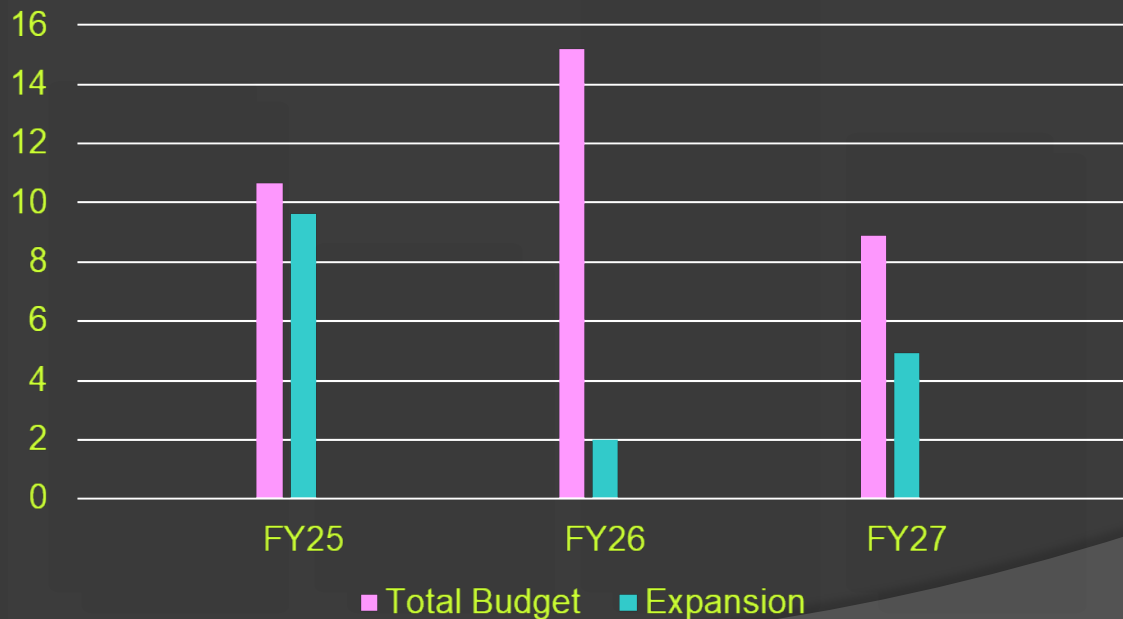
## FY 2026 (WWRF Cont.)

- Waiehu Kou PS Modifications – Design 54% Complete; Est. Bid Date April 2026
- Kehalani PS – Design 35% Complete; Const. in FY28
- Kehalani FM & Gravity Sewer – Design 24% Complete; Const. in FY28
- Kah. Beach Rd Sewer Line Upgrade – Const. Contract Awarded (WMC); NTP (TBD)
- W. Maui R-1 System Expansion - Design Consultant Selected (FA); NTP (TBD)
- Napili FM#2 Replacement – Design 24% Complete; Est. Bid Date Mid 2026
- Napili PS#1 Modifications – Const. Contract Awarded (OCI); NTP (TBD)
- Napili PS#2 Modifications – Est. Const. Bid Date April 2026
- Lahaina WWRF Returned Activated Sludge/Dewatering Upgrades – Const. Contract Awarded (Hensel Phelps); NTP (TBD)
- Lahaina Siphon & Ditch R-1 Dist. – Design Consultant Selected (FA); NTP (TBD)

# SWD FY25-FY27 CIP Projects

- Approx. 52.3% of total CIP budget are regulatory or maintenance related projects
- Approx. 47.7% of total CIP budget are expansion or new infrastructure related projects

## SWD Expansion Projects by FY



# SWD FY25 CIP PROJECT UPDATES

## FY 2025 (SWD)

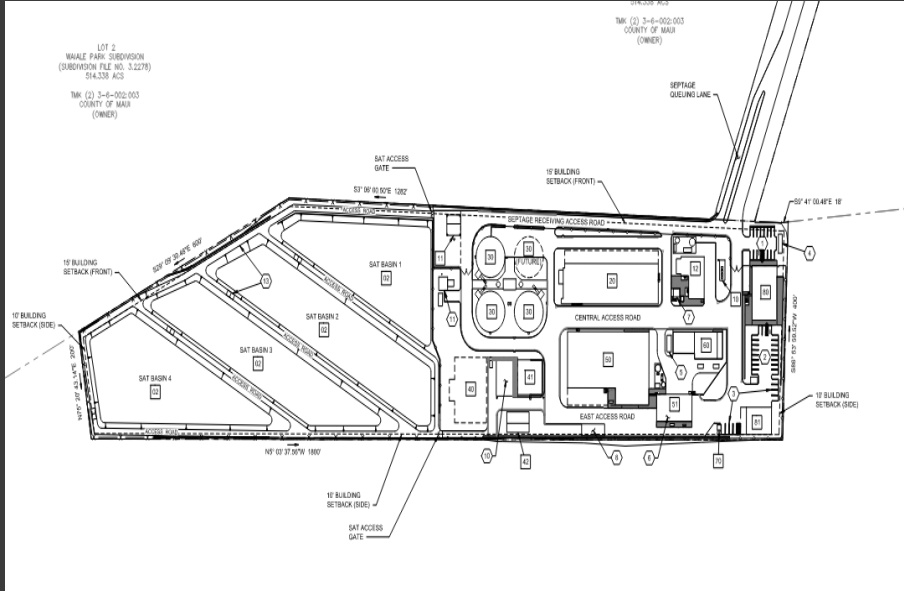
- Integrated SWMP Update – 100% Completed
- Molokai Landfill Scalehouse Replacement – Lack of Resources Deferred to FY27
- CML Comprehensive EIS – Consultant Selected (MH) 10% Completed
- CML LFG System Expansion – Currently out to bid for Construction
- Beneficial Use of LFG – Evaluating Options (RFP vs. Amend Current Contract)
- Prefab Building w/ Solar Power at CML – Contract Being Executed (Betsill Bros.)
- CML Gas Collection System Reliability (Flare) – Const. 85% Complete

# SWD FY26 CIP PROJECT UPDATES

## FY 2026 (SWD)

- CML Phase II/III Interface (Disposal Area) Development – Design 100% Complete; Est. Bid Date June 2026.
- CML LFG System Expansion – Design 100% Complete; Est. Bid Date Feb 2026
- CML Supplement to Primary Litter Screen – Design 50% Complete; Est. Bid Date Late 2026
- Solid Waste Master Plans for County Landfills and Solid Waste Facilities – Design Consultant Selected (HDR); Proposal Pending; NTP April 2026.
- CML Infrastructure – Design 100% Complete; Const. Contract Awarded (Betsill Bros); NTP (12/30/25)

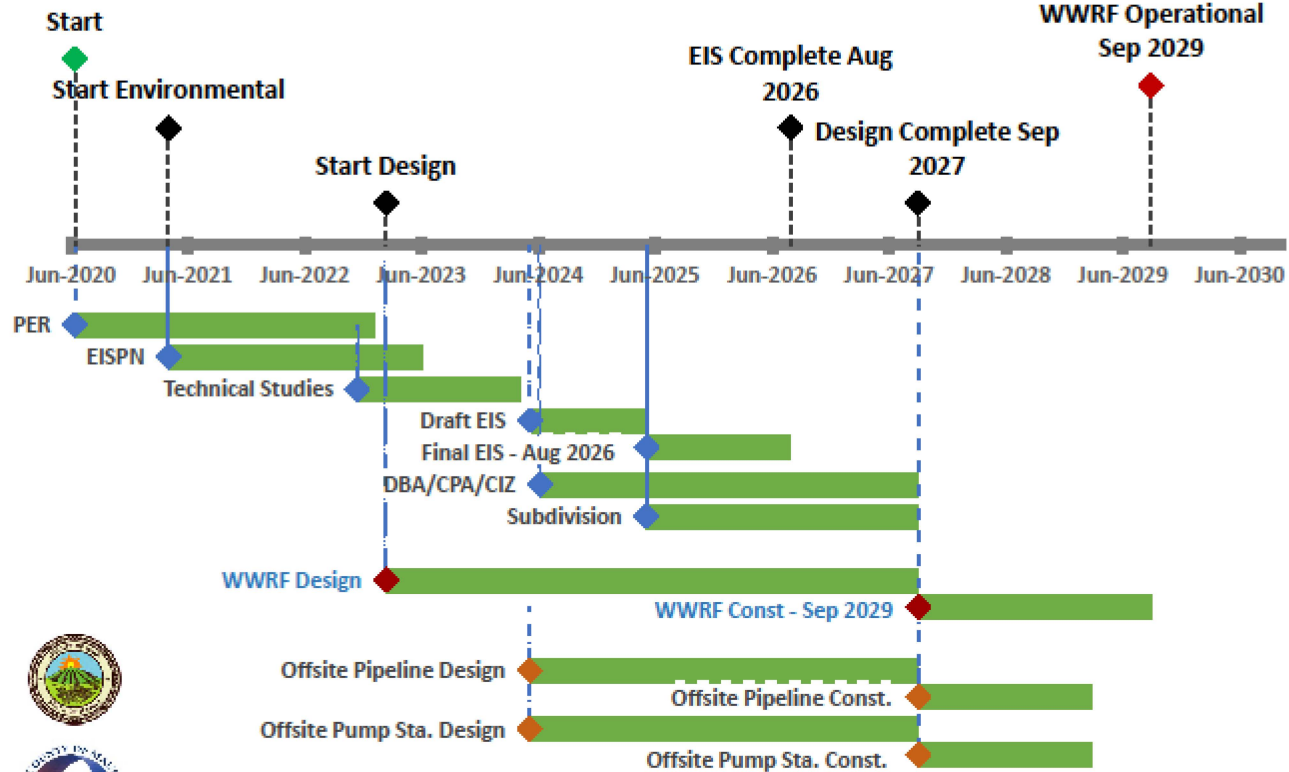
# CENTRAL MAUI WWRF TIMELINE



Date	Milestone
2020	Facility Plan
2021	Begin EIS Process, Technical Studies
2022	Finish Facility Plan, Basis of Design Report
2023	Begin Design, Preliminary Estimates
2024	30% Design
2025	60% Design
2026	90% Design, Issue Final EIS, DBA, CPA, CIZ
2027	100% Design, Bid Project
2028	Construction
2029	Construction
2030	Testing and Commissioning; Plant Fully Operational

Questions???

## Central Maui WWRF Timeline



# KIHEI RECYCLED WATER SYSTEM EXISTING

**LEGEND**

**Recycled Water Users** Kihei WWRP

**Customer Status**

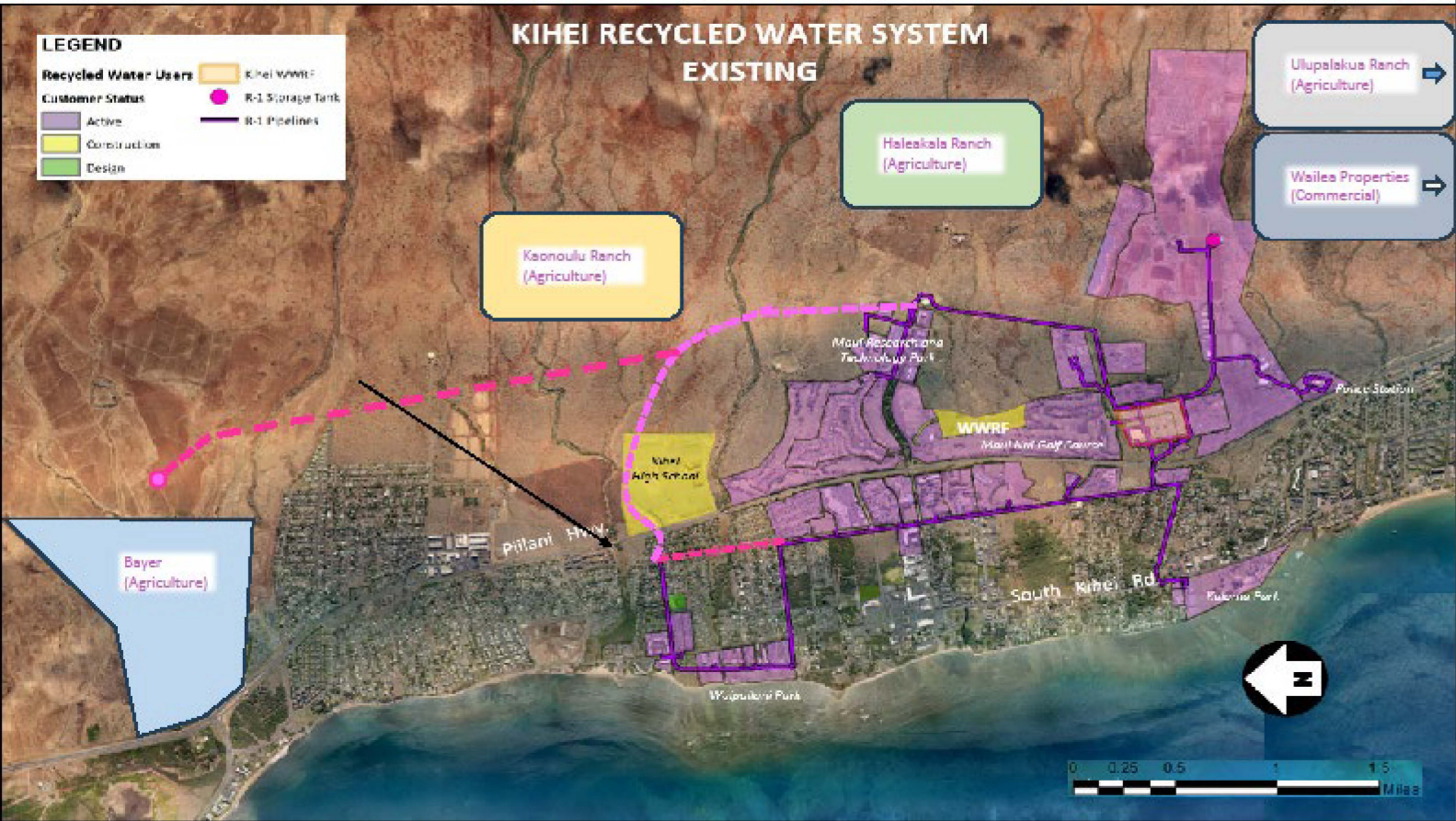
- Active
- Construction
- Design

R-1 Storage Tank

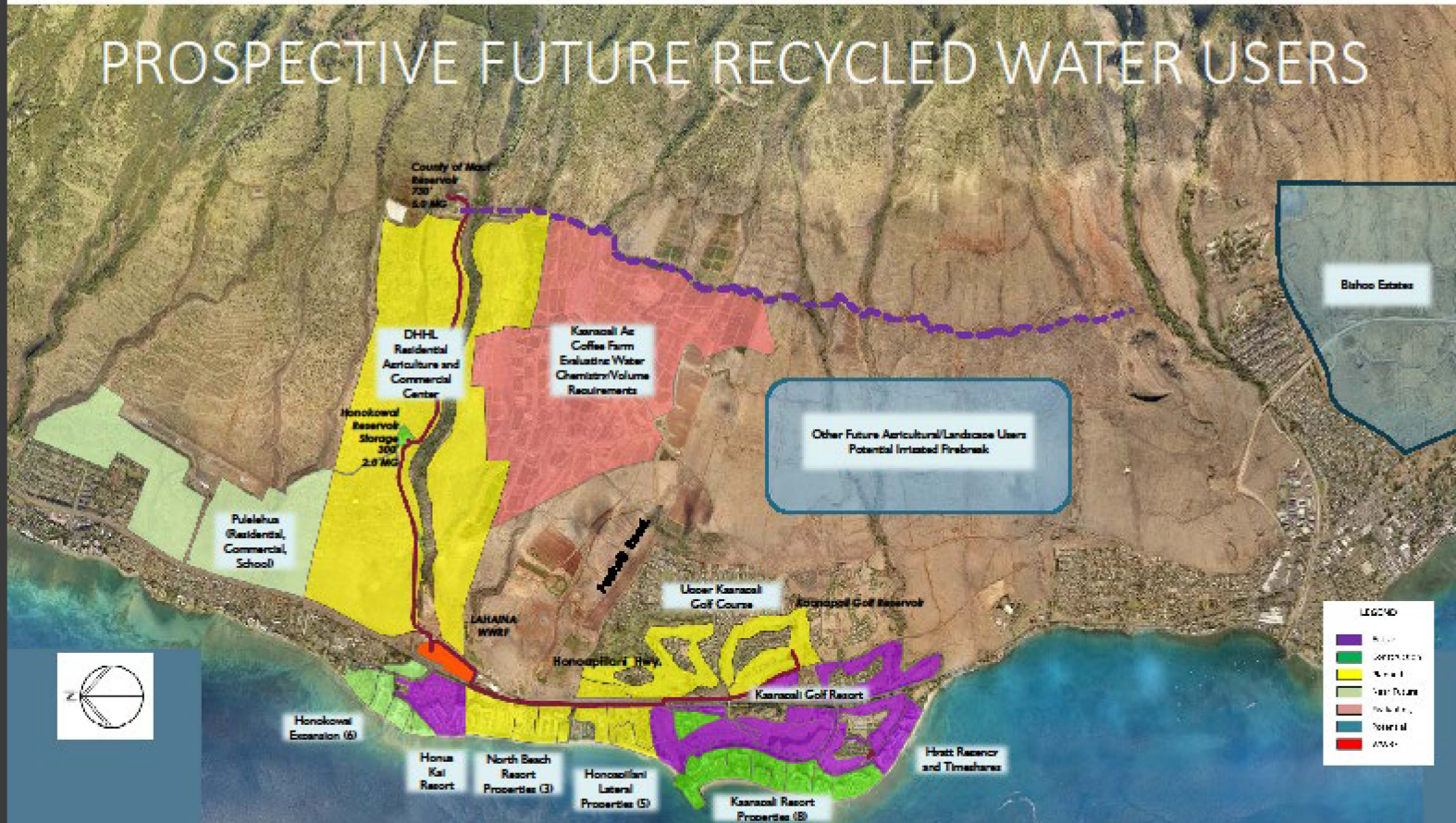
R-1 Pipelines

Ulupalakua Ranch (Agriculture)

Wailea Properties (Commercial)



# PROSPECTIVE FUTURE RECYCLED WATER USERS



## WAI Committee

---

**From:** Nadine C. Orikasa <Nadine.Orikasa@co.maui.hi.us>  
**Sent:** Friday, March 6, 2026 11:19 AM  
**To:** Shayne R. Agawa; WAI Committee  
**Cc:** Thomas M. Cook; Jared P. Agtunong; Lori Ann M. Tengan; Stacy Takahashi; Keone J. Hurdle  
**Subject:** RE: Presentation from DEM on CIP Projects  
**Attachments:** DEM FY25-FY26 CIP Updates - WAI Committee Slideshow (Rev DEM-Admin 3-9-26).ppt;  
DEM FY25-FY26 CIP Updates - WAI Committee Slideshow (Rev DEM-Admin 3-9-26).pdf

Please find attached, 2<sup>nd</sup> revision of DEM's presentation for the March 9, 2026, WAI Committee Meeting. Thank you.

---

**From:** Shayne R. Agawa <Shayne.Agawa@co.maui.hi.us>  
**Sent:** Wednesday, February 25, 2026 4:46 PM  
**To:** wai.committee@mauicounty.us  
**Cc:** Nadine C. Orikasa <Nadine.Orikasa@co.maui.hi.us>; Thomas M. Cook <Thomas.Cook@mauicounty.us>; jared.agtunong <Jared.Agtunong@mauicounty.us>; Lori Ann M. Tengan <LoriAnn.Tengan@mauicounty.us>; Stacy Takahashi <Stacy.N.Takahashi@mauicounty.us>; Keone J. Hurdle <Keone.Hurdle@mauicounty.us>  
**Subject:** RE: Presentation from DEM on CIP Projects

Revised presentation for WAI Committee 3/9/26 attached. Thx, SA.

*Shayne R. Agawa, P.E.*  
*Director*

County of Maui  
Dept. of Environmental Management  
2145 Kaohu St., Suite 102  
Wailuku, HI 96793  
Ph. (808) 270-8230  
Fax. (808) 270-8234

---