

APT Committee

From: Adam Radford <aradford@hawaii.edu>
Sent: Monday, January 31, 2022 3:59 PM
To: APT Committee
Cc: Kasie M. Takayama
Subject: Fwd: Presentation in the 2/1 Agriculture and Public Trust Committee meeting
Attachments: County Presentation Feb2022.pdf

You don't often get email from aradford@hawaii.edu. [Learn why this is important](#)

Aloha,
Please let me know if you need anything more for my presentation tomorrow.
All the best,
Adam

--

Adam Radford, Manager
Maui Invasive Species Committee (MISC)
P.O. Box 983
Makawao, HI 96768
office: 808-573-6471
cell: 808-264-9496
web: www.mauisc.org

MISC is a project of the Pacific Cooperative Studies Unit (PCSU) - University of Hawai'i at Mānoa.



MISC

MAUI INVASIVE SPECIES COMMITTEE

Update for the Maui County Committee of Agriculture and Public Trust

February 1, 2022

Planning and Prioritization

Miconia (*Miconia calvescens*) Management Plan



Maui Invasive Species Committee (MISC)
2021

Table of Contents

- Introduction.....
- Background.....
- Biology and Distribution.....
- Suitable Habitat.....
- Current Extent of the Infestation.....
- Historic Management Strategy for Maui.....
- Proposed Management Strategy for Maui.....
- Bio-Satiation Protocols.....
- Ground Operations.....
- Workflow.....
- Schedule.....
- Aerial Operations.....
- Workflow.....
- Schedule.....
- Key Performance Indicators.....
- Monitoring and Evaluation.....
- Public Involvement / Early Detection.....
- Conclusions and Recommendations.....
- Literature Cited.....

Eradication of Coqui Frogs from Maui County, Hawai'i Strategic Plan 2020-2030



Giggie Hill and Māliko Gulch

Maui Invasive Species Committee
Pacific Cooperative Studies Unit, University of Hawai'i



MAUI INVASIVE SPECIES COMMITTEE



STRATEGIC PLAN 2021

MAUI INVASIVE SPECIES COMMITTEE (MISC) STRATEGIC PLAN

STRATEGIC PLAN COMPONENTS

MAXIMIZING PROGRAM IMPACT

- GOAL 1: PROTECTING MAUI NEI FROM INVASIVE SPECIES
- EARLY DETECTION
 - RAPID RESPONSE
 - ERADICATION / CONTAINMENT
 - NATURAL ENEMIES

MAXIMIZING PROGRAM QUALITY

- GOAL 2: STRATEGIES & ACTIONS ARE SCIENCE-BASED, EFFICIENT & EFFECTIVE
- SCIENCE-BASED
 - EFFICIENCY & EFFECTIVENESS
 - DATA MANAGEMENT

MAXIMIZING OUR VOICE

- GOAL 3: ENGAGING THE PUBLIC
- PUBLIC AWARENESS & SUPPORT
 - AGRICULTURAL, HORTICULTURAL & LANDSCAPE INDUSTRIES
 - TOURISM INDUSTRIES
 - EDUCATION

STRENGTHENING OUR CONNECTIONS

- GOAL 4: MAUI NEI STATEWIDE NETWORKS & HAWAIIAN CULTURE
- MOLOKAI, LANAI & KAUAI/OLAUKE
 - ISCS, CSOAPS & HESC
 - PARTNERSHIPS
 - HAWAIIAN CULTURE

CREATING FINANCIAL SUSTAINABILITY

- GOAL 5: ADEQUATE & STABLE FUNDING
- FINANCIAL STABILITY
 - FISCAL RESPONSIBILITY

BUILDING A WORKFORCE TO ACHIEVE OUR VISION

- GOAL 6: REWARDING WORKPLACE
- RETENTION
 - PROFESSIONAL DEVELOPMENT
 - LOCAL RECRUITMENT

Operational plan for management of *Wasmannia auropunctata* (Little Fire Ant) on the island of Maui, Hawai'i.



Prepared by:

Cas Vandennote
Hawaii Department of Agriculture, Hilo
Eggs Peronius
Maui Invasive Species Committee

Salva Capovilla,
Maui County
Forest Staff
April 2021
United States Geological Survey

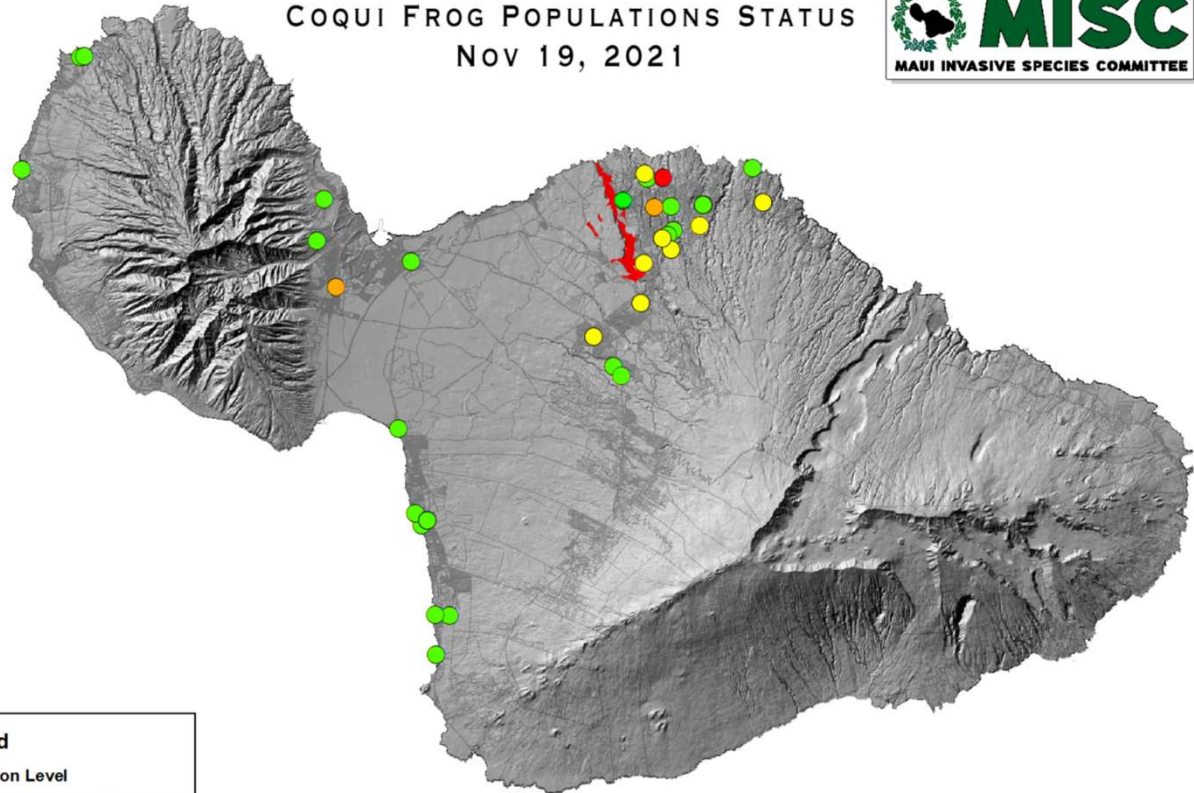




Maui Coqui Update



COQUI FROG POPULATIONS STATUS NOV 19, 2021

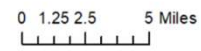


Legend

Infestation Level

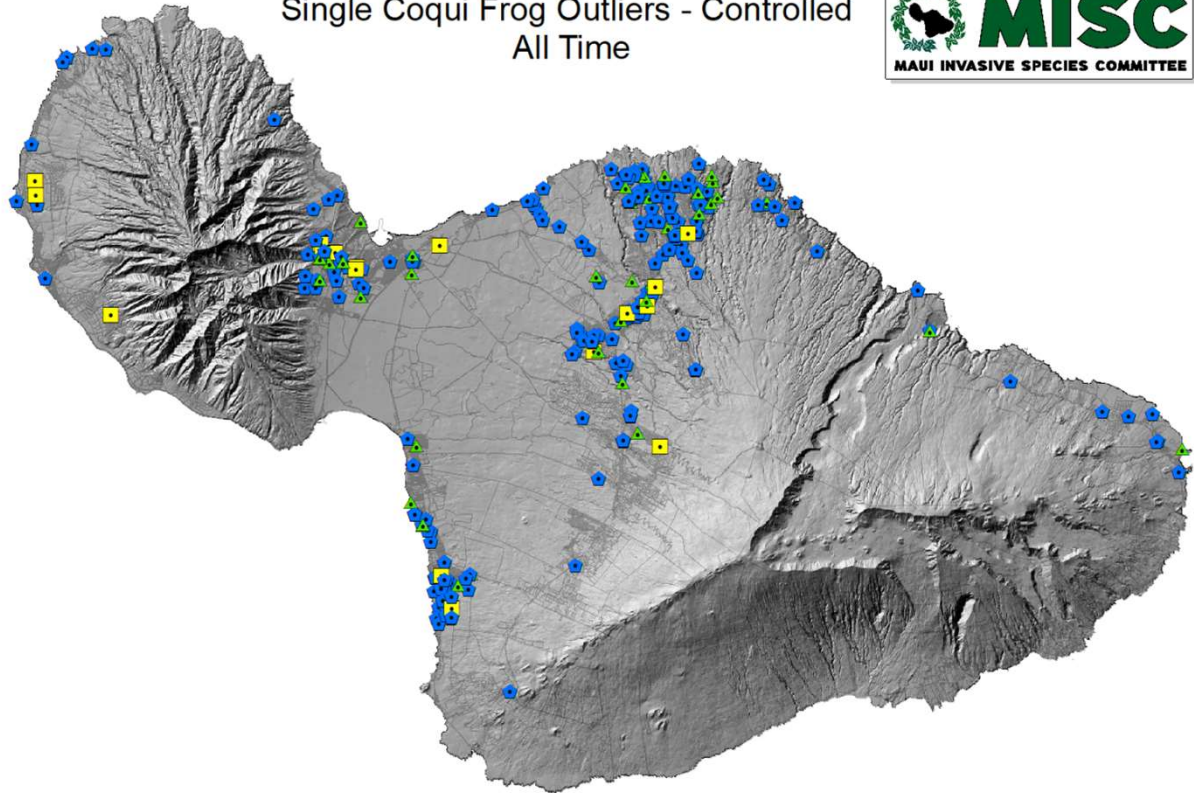
Current Population Infestation Level

- Eradicated
- Low
- Medium
- High




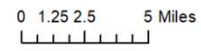


Single Coqui Frog Outliers - Controlled All Time



Legend

-  Public
-  MISC
-  HDOA



Māliko Gulch



Community Coqui Control Program

Community Coqui Control Program 2021



C. Schwarz

CCCP support levels

- Neighborhood
 - Sub-division size
- Micro-neighborhood
 - Cul-de sac
 - Rural neighbors
- Individual properties



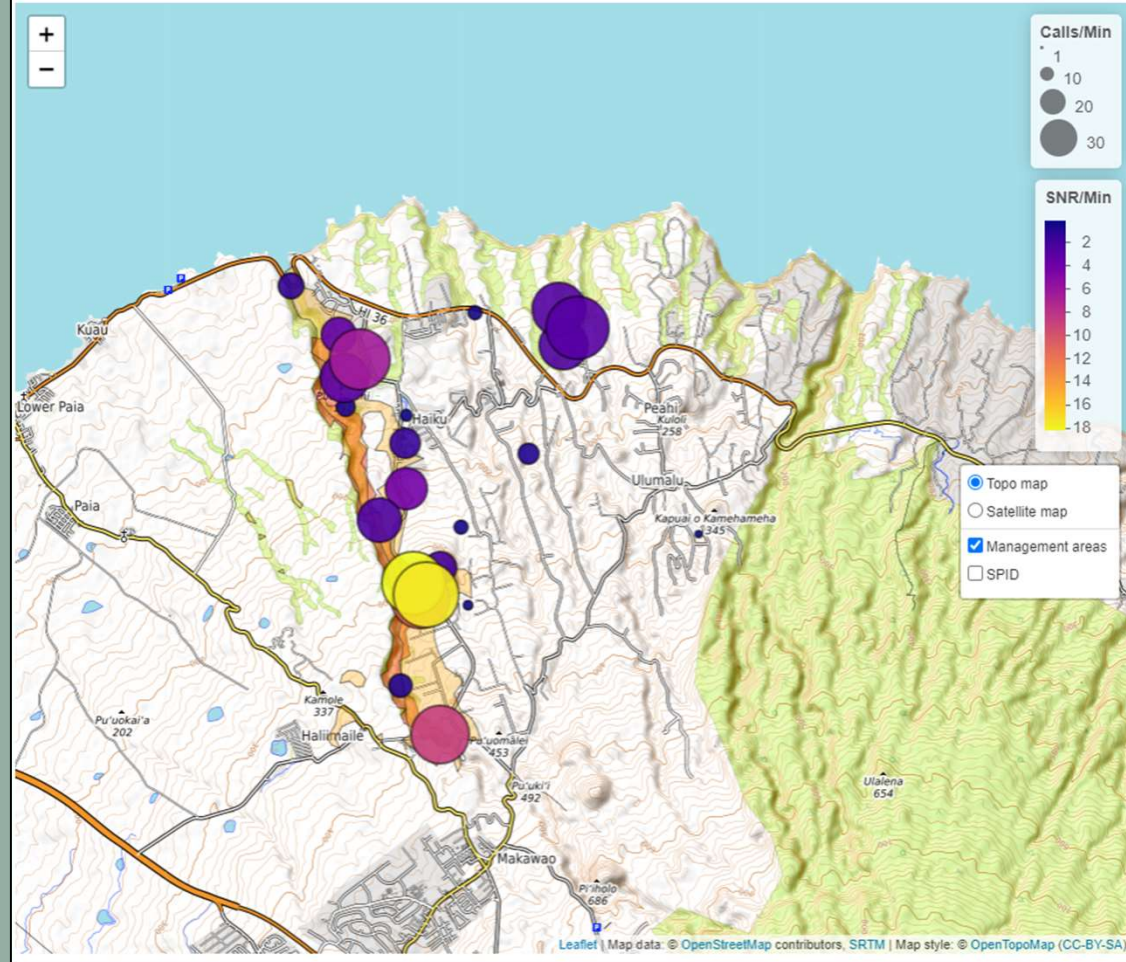
Community Coqui Control Program



Community Coqui Control Program



Coqui detections map



Mahalo!

ang did a tremendous quieter. There is a p in the hills. (We narrow night.)

So I woke up at 3 am (odd) & took a moment to listen outside. I didn't hear any coqui! Will listen again this eve. Mahalo to you & the crew!!!

Good crew Abe! Grateful Thanks

DEFINITELY the best its been in a while We appreciate your efforts so much !

Hi Did not hear coqui after u left ! Will keep u posted As always Thank you !!

I'm sorry you have to deal with our Haiku rainy jungle. I have so much respect for you all. I was struggling fighting them alone. I am so thankful for the assistance!

I'll make pies

I'm certain they'll love that. Thank you.

Howdy Alls been quite s THANK YOU! I know its a long peace of quiet th early mornings u r all helping to priceless ! and i are APPRECIATIVE of your efforts!

Yes indeed. Thank You!!!

We really appreciate your team. It's the least we can do!

I massively appreciate the effort Would love to get lunch for the crew 1 day perhaps we could discuss near future

PS thanks for the citric! My landlords and neighbors are stoked.

Got the sprayer today Shane. Thank you guy Also drove to Lanikai and couldn't hear one did a really great job, happy. Mahalo!

you folks have a top notch koki frog team (leader Scott) really appreciate your folks help

Hey there, Abe! Thank you, thank you, thank you, and thank your fabulous crew! For the first night in a couple of years I don't hear frogs right outside my door. You guys did a fabulous job. Keep up the good work let's wipe them out.

Alpha MISE
These ta
w/whipped and
deep gratit
and HANU
Mahalo

us with a
problem in
Happy Th

Re: Your crew arrived here
lal wnt to thani to thank
you for sending a crew.
As I said the noise had
become unbearable and
was afraid this could hapen
all over haiku if not stopped.
Again thank you for quick
responen. Great group. st
evening to help eradicate
coqui. They are so polite adn
efficient

Adam Bradford 11:00 AM

Delivered

2:55 PM

Sent



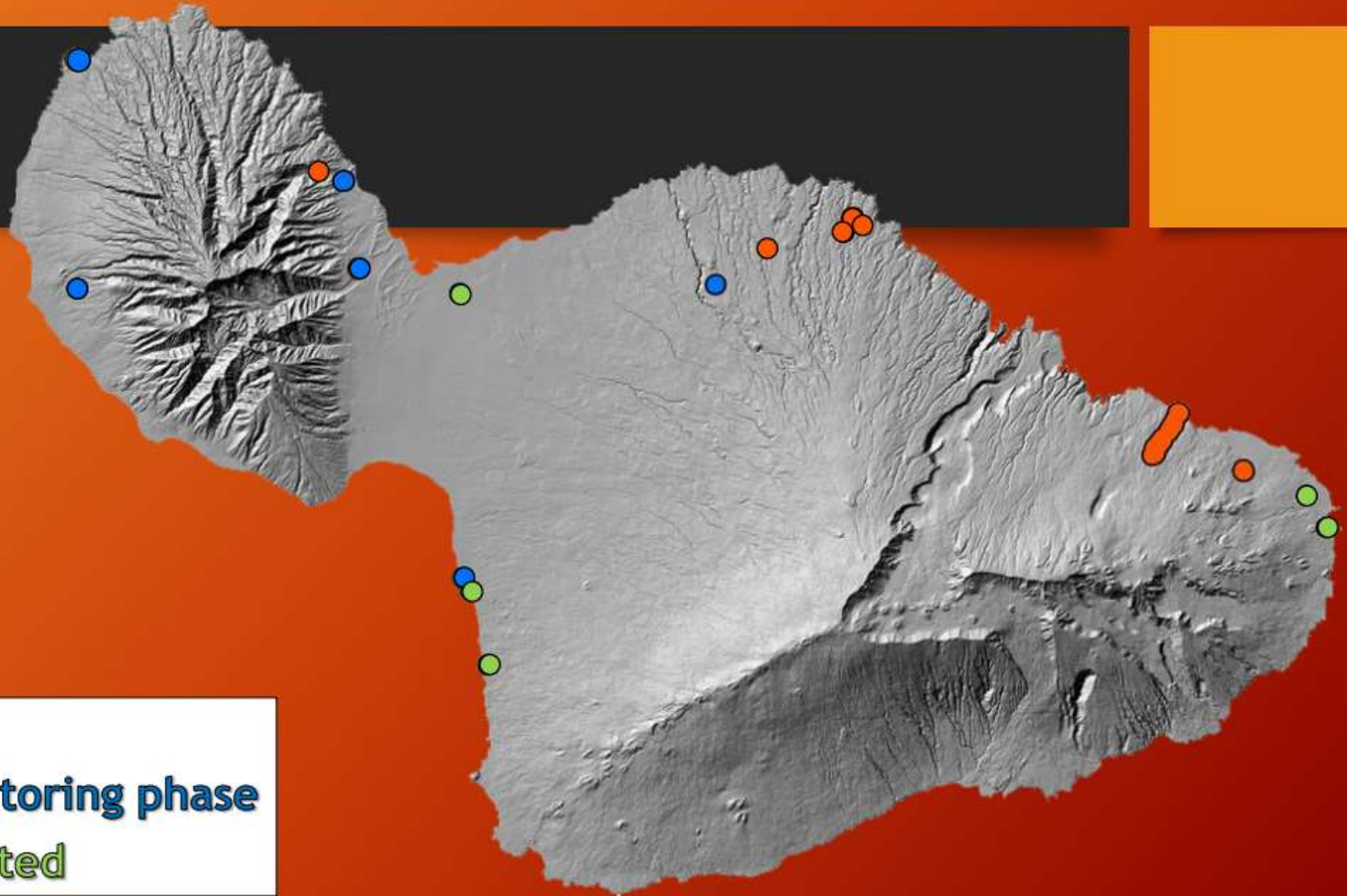


MISC

MAUI INVASIVE SPECIES COMMITTEE

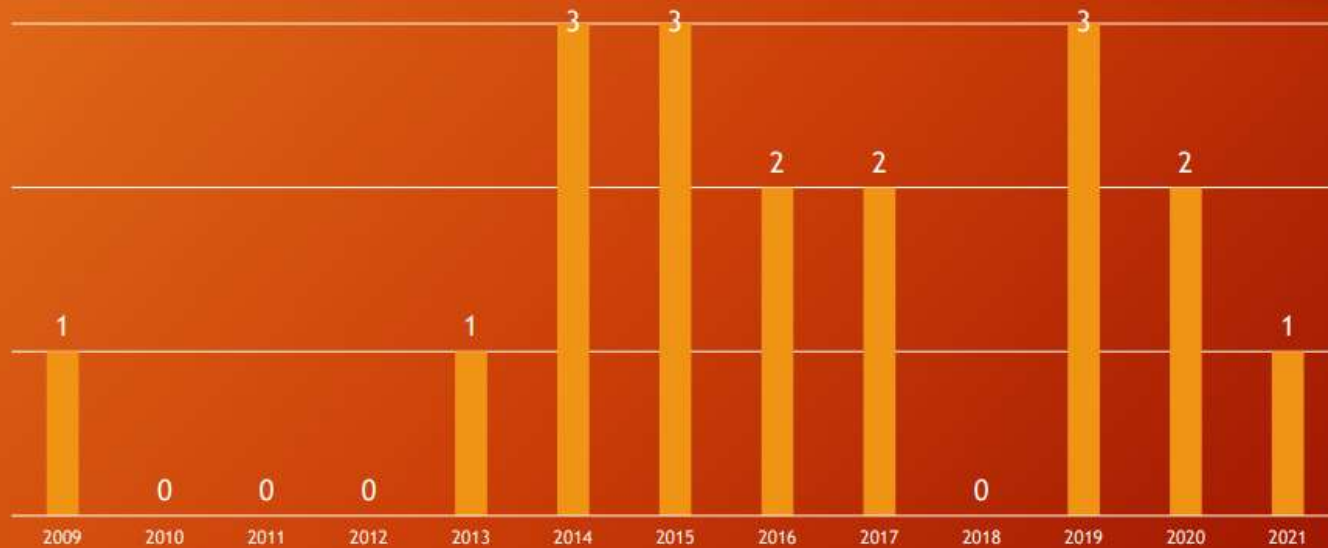
Maui LFA Update

Overview



- **7 active sites**
- **6 sites in monitoring phase**
- **5 sites eradicated**

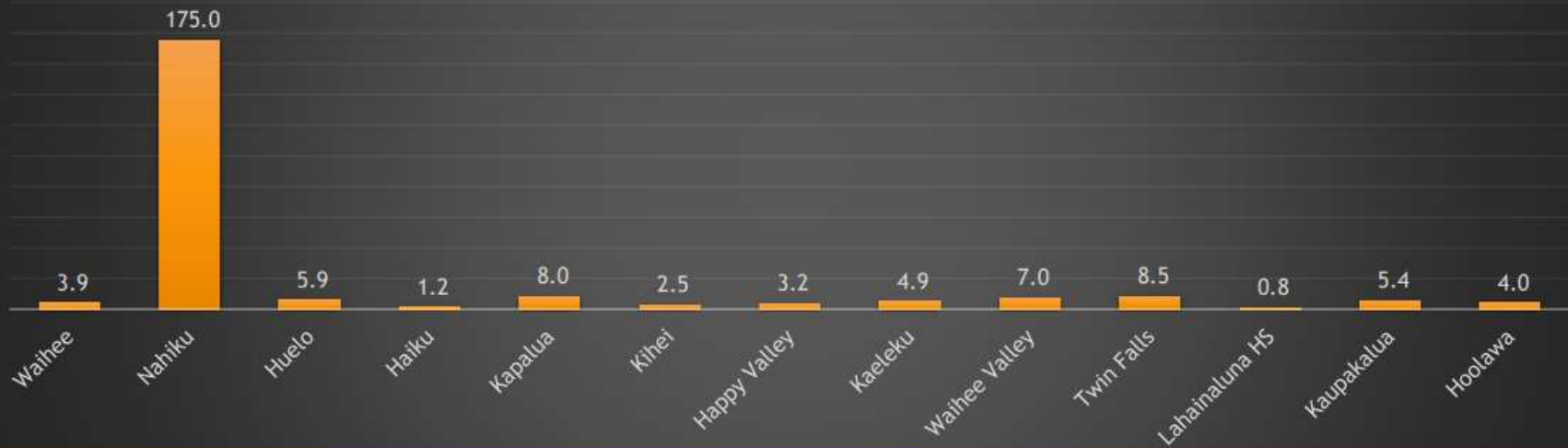
LFA incursions per year on Maui



18 discovered to date

Maui Infestations

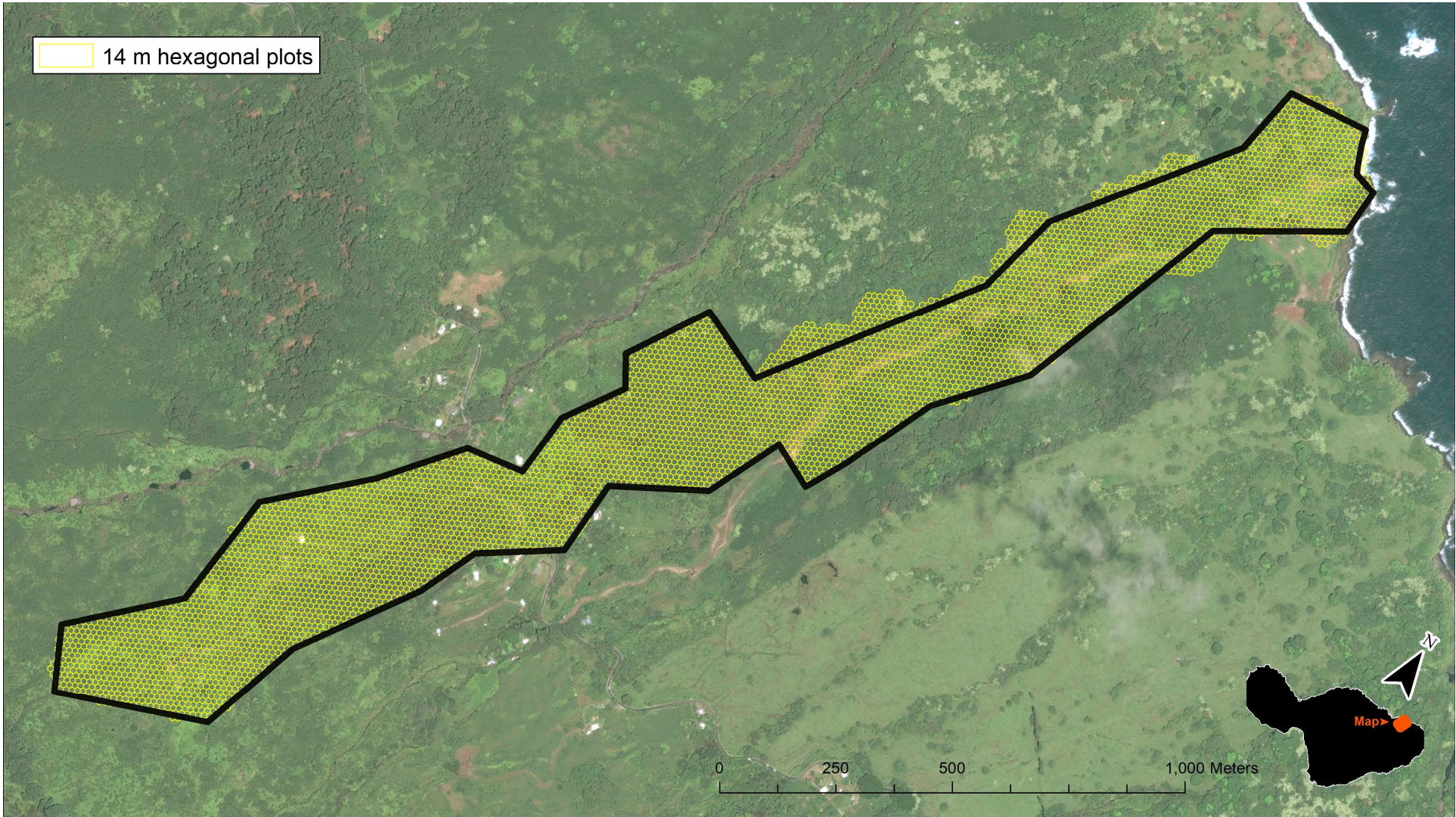
INFESTATIONS
Treatment acres

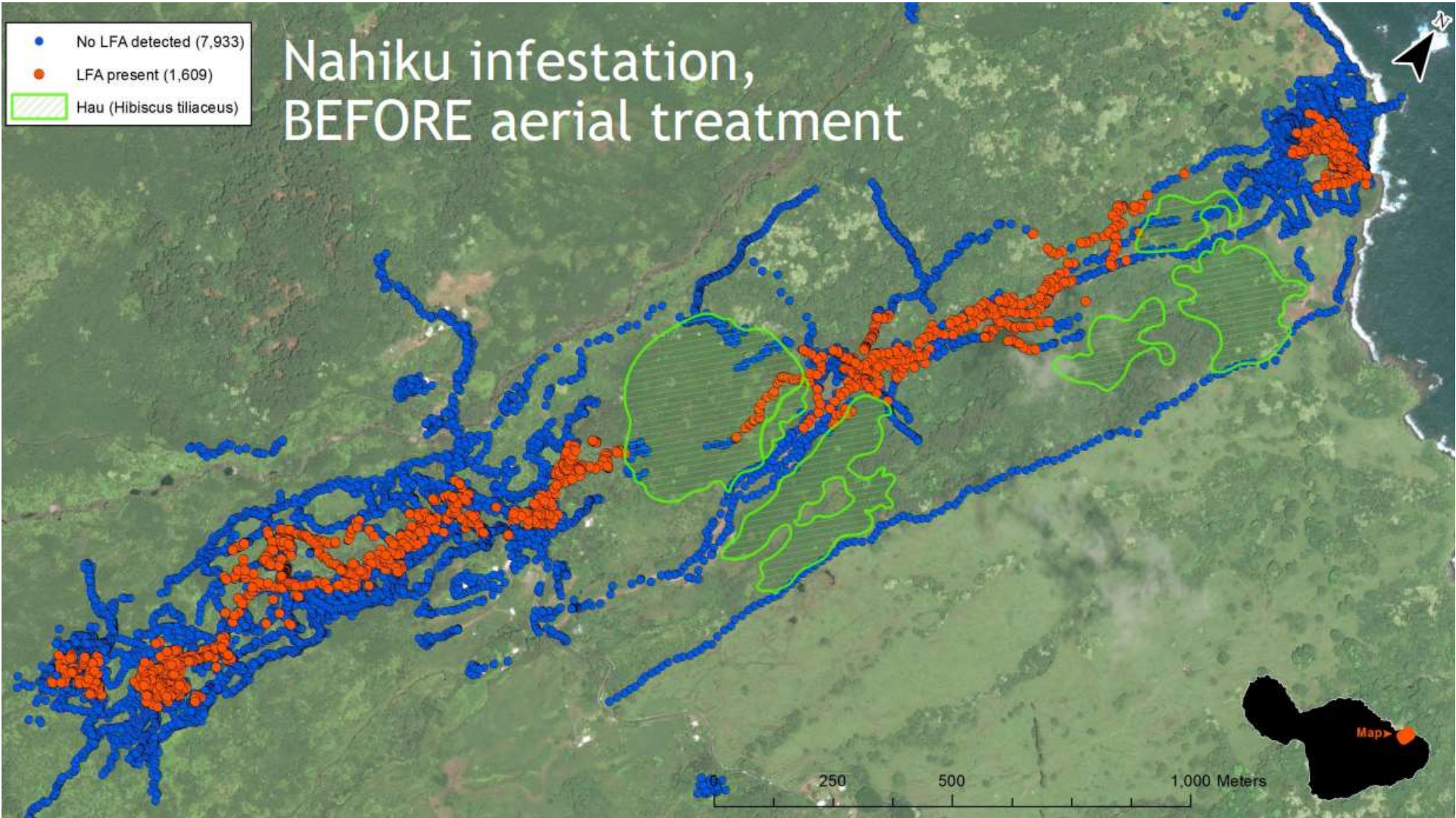


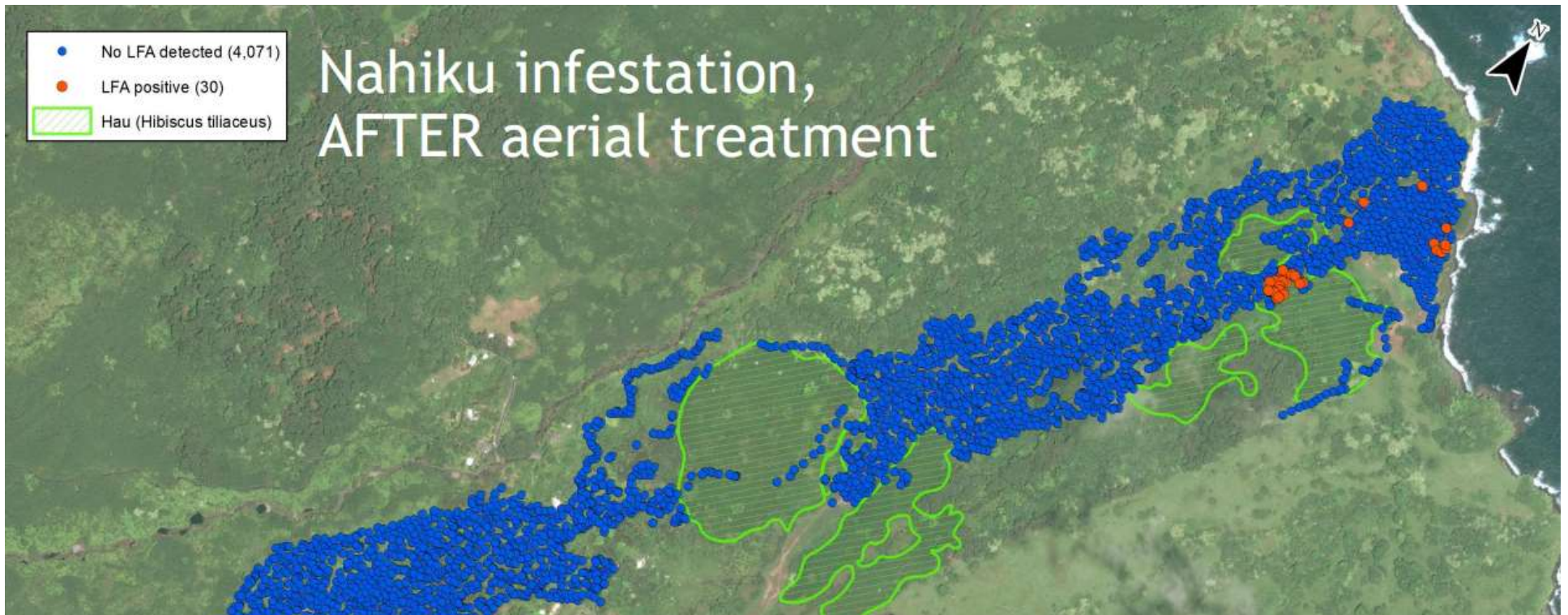
14 m hexagonal plots

0 250 500 1,000 Meters

Map

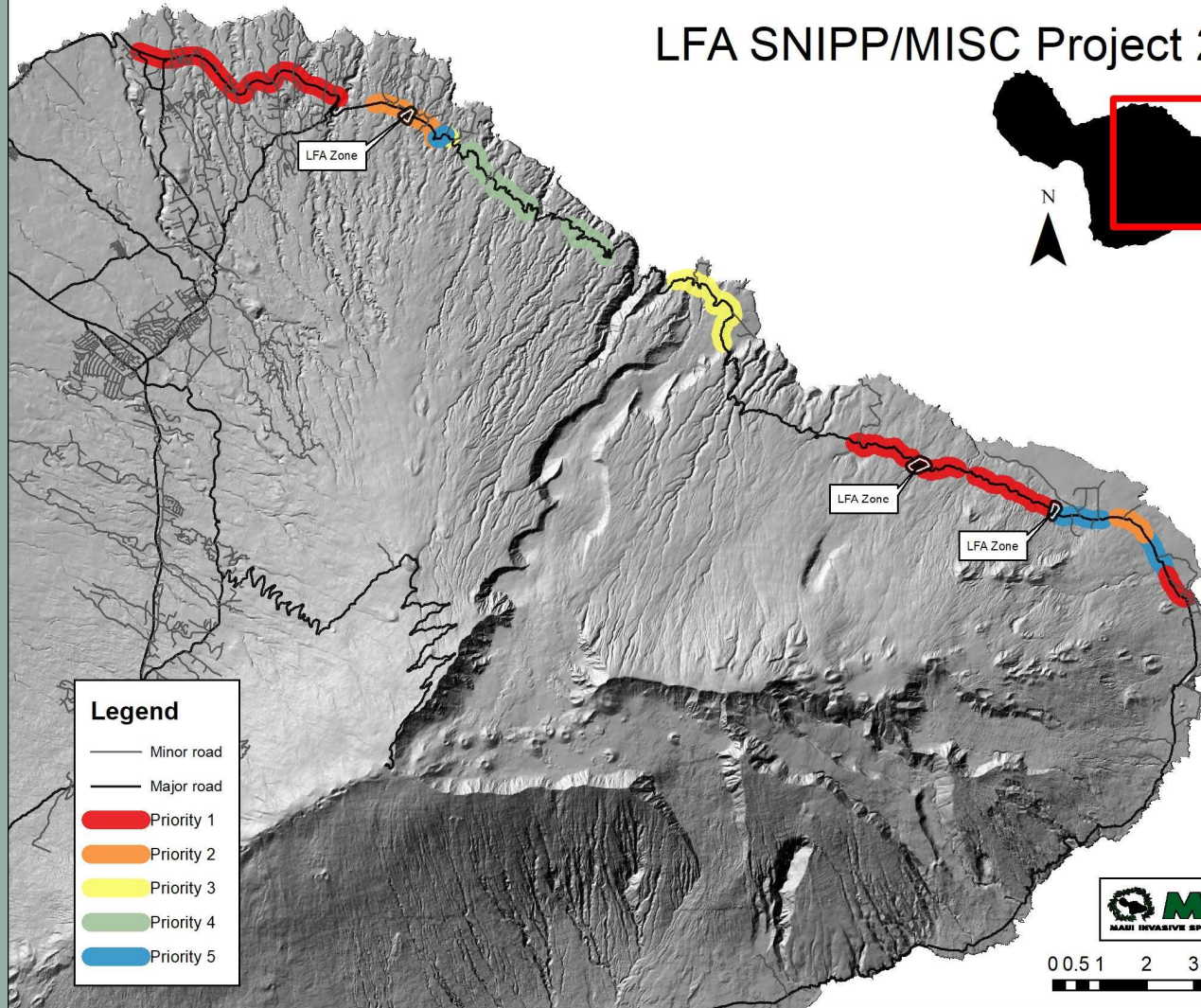
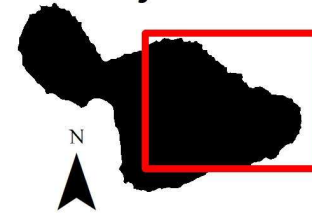






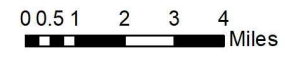
- MISC YouTube documentary (2014, 30 minutes): [Invasion!](#)
- MISC YouTube documentary (2016, 28 min.): [Fire!](#)
- MISC presentation on status & methodology (2020, 55 min.): [Efforts and Approaches on Maui to Eradicate Little Fire Ants](#)
- MISC short video on helicopter methodology (2019, 2 min.): [LFA Rig Test by MISC](#) which can be found on this informational page about the aerial treatments: [Nāhiku LFA aerial treatment](#)
- VICE News documentary (2020, NSFW, 12 min.): [Fire Ants Are Invading Hawaii, so Helicopters Are Blasting Them With Birth Control](#)

LFA SNIPP/MISC Project 2021



Legend

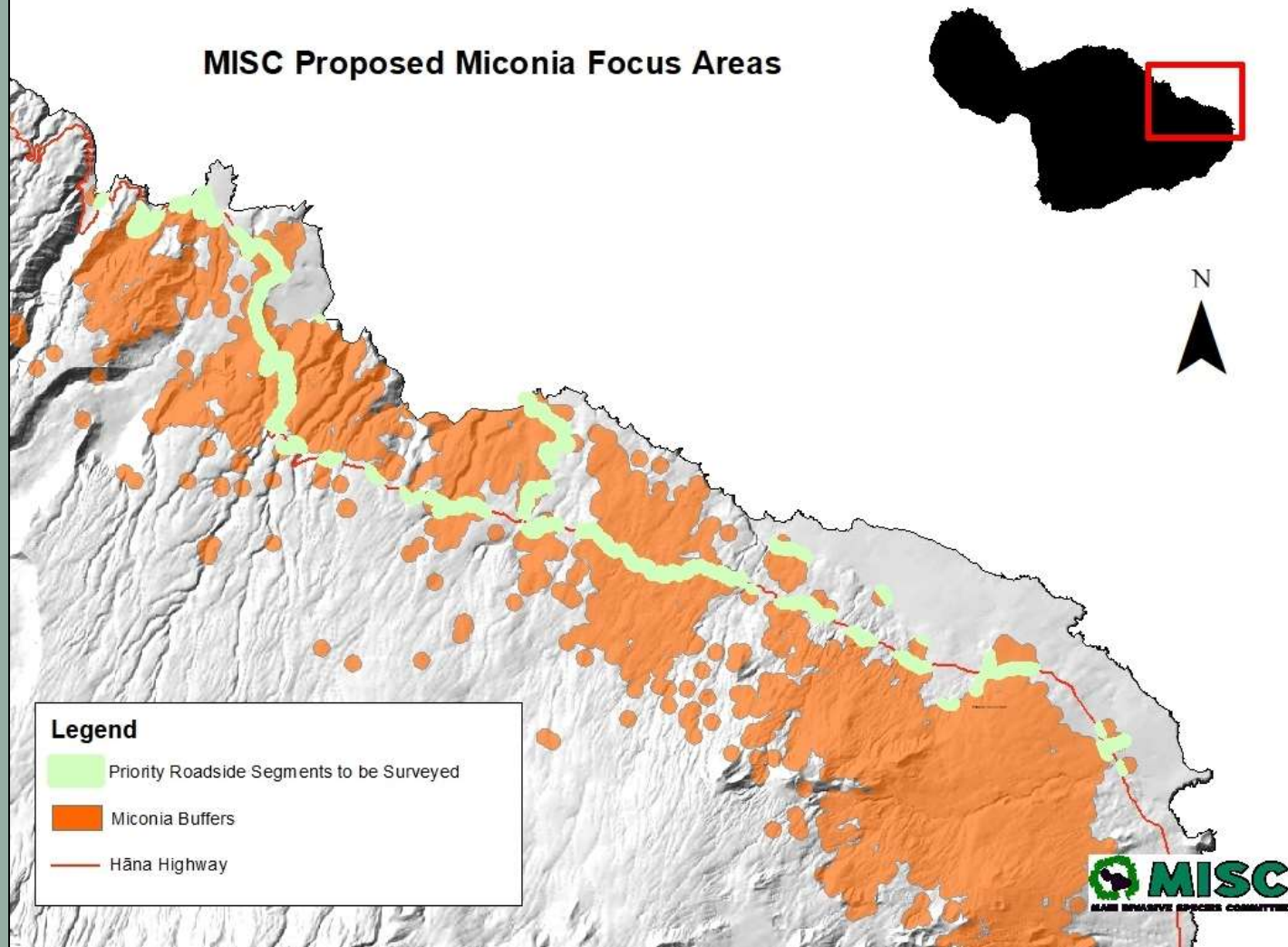
- Minor road
- Major road
- Priority 1
- Priority 2
- Priority 3
- Priority 4
- Priority 5



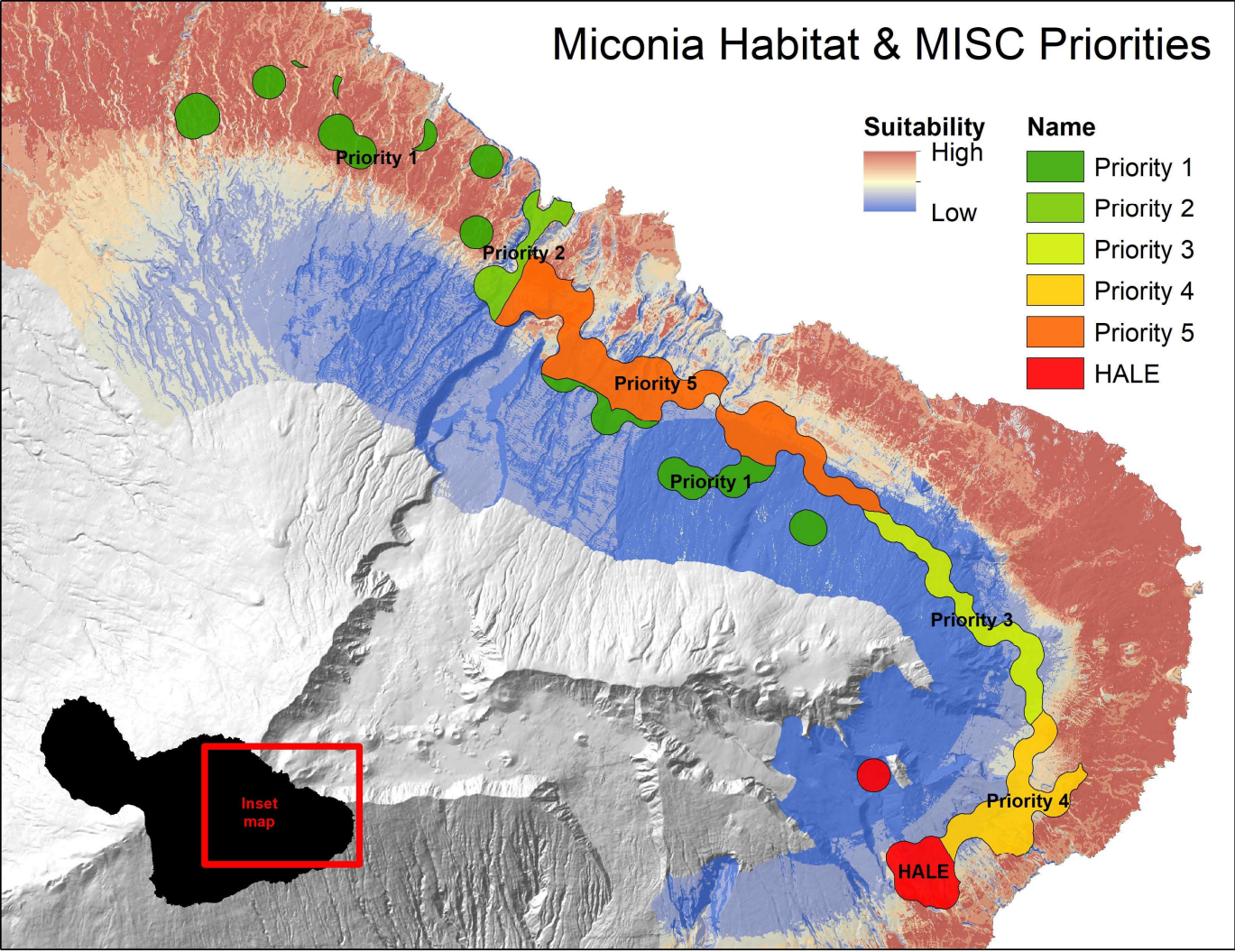


Maui Miconia Update

MISC Proposed Miconia Focus Areas



Miconia Habitat & MISC Priorities



MISC at Old Maui High



FY23 Budget Request

- All support included in one line item.

FY22 Summary:

- Little fire ant: \$ 500,000
- Coqui frogs: \$1,000,000
- Miconia and other invasive species: \$ 700,000
- Department of water supply: \$ 260,000

- Please consider ongoing support or bumping up to FY20 levels! Mainly for the coqui control project, which in FY20 was at \$2.5M.

Mahalo!

- E-mail: miscmgr@hawaii.edu,
miscpr@hawaii.edu
- Phone: (808) 573-MISC
- Website: www.mauiinvasive.org
(sign up for our newsletter!)
- Facebook: Maui Invasive Species Committee
- Instagram: @mauiinvasive
- YouTube: youtube.com/mauiisc

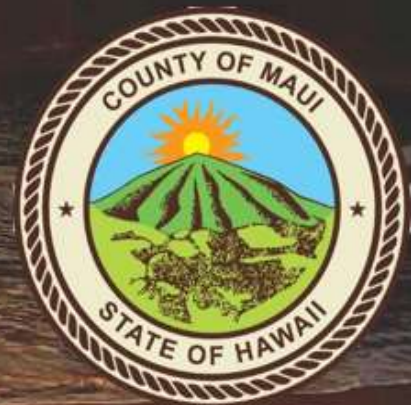


Photo by Kapena Kalama