

PRL Committee

From: David Yamashita <David.Yamashita@co.maui.hi.us>
Sent: Monday, October 30, 2017 4:49 PM
To: PRL Committee
Subject: Presentation to PRL committee for the Wells Park Master Plan update on 31 October (compressed version)
Attachments: System Planning - DP Advisory Group-Oct 21017-COMPRESSED.pdf

Chair Don Guzman:

Attached is a pdf of the presentation on 31 October to the PRL Committee. Please contact me if you have any questions. Thanks you.

WELLS PARK

Master Plan



The Site



Wells St.

Market St.



Wailuku Civic Hub

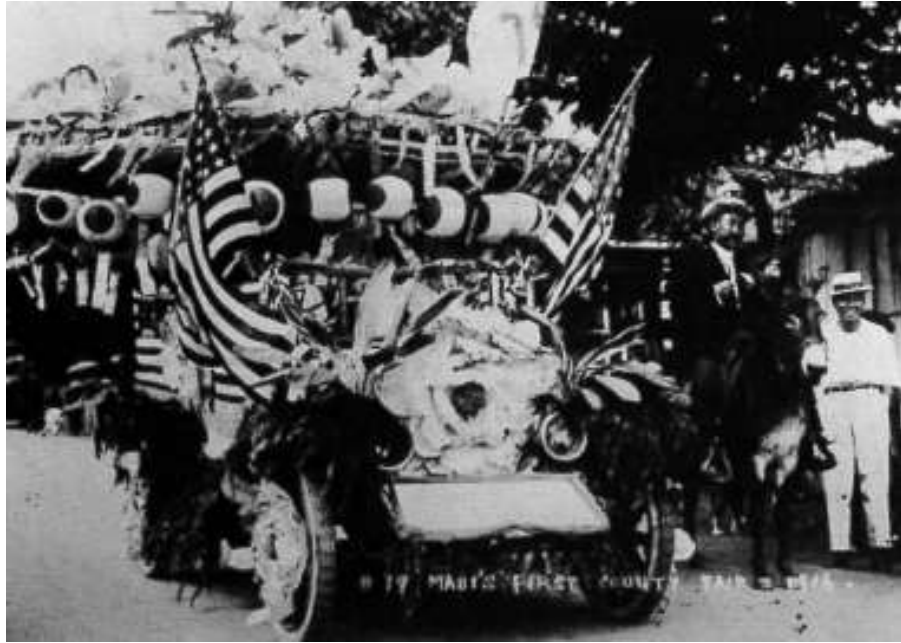
Wells Park

Wells St.

Market St.

Main St.

Wells Park as the Center of Community Life



Interviews



Open Houses + Workshops

Are there any issues or concerns at Wells Park?
 What would you like to see more of – or less of in Wells Park? Lots of shade trees w/ tables

REMOVE HOMELESS FROM RESTROOMS

- Fix pathway
- Repair tennis courts, maintain existing + future
- Block wall has holes
- Fix fencing
- Add more courts at least 3

WE LOVE HOLA TENNIS EVENT AT WELLS PARK!

Needs remodeling of the bathroom. We need shower room. Needs upkeep of the tennis courts.

Bathroom improvements **yes!**
 Wells tennis courts need resurfacing. Would cost a lot less than tearing it down and displacing our Tennis tennis programs!!

I would like to see less homeless on the park. **Yes**

IMPROVE BASKETBALL COURT, BATHROOM FACILITY.

Save wells park

More security → Cameras
Better maintenance

- crosswalks crossing Kiri-papa
- more lighting
- more water fountains
- more trashcans

More security & some balls/workout
 Please fix tennis courts, area. Also bathrooms, please. Parking is tight

Improve bathroom facilities **yes!**
Repair the basketball court **yes!**
More lights for safety

Picnic areas + shelter roof
 IMPROVED WALKWAY PATH/ LIGHT DOOR WATER FOUNTAIN







Changing the Paradigm

FROM FITNESS ZONES
TO THE MEDICAL MILE:
*How Urban Park Systems Can Best
Promote Health and Wellness*



THE TRUST for PUBLIC LAND
MAKING LAND FOR PEOPLE

“Strong evidence shows that when people have access to parks, they are more likely to exercise, which can reduce obesity and its associated problems and costs.”

The Health Benefits of Parks, Trust for Public Land, 2006.

First Friday



WELLS PARK
FE WAILUKU

POP-UP PLANNING

WELLS PARK MASTER PLAN

CALVARY CHAPEL
31 N. Market Street
(Enter from the municipal parking lot)
April 6

WAILUKU FIRST FRIDAY
lao Square
(Next to lao Theatre)
Friday, April 7
6:00 pm - 9:00 pm



...the preferred concept plan for Wells Park.
...time the open house is being held.
...ny questions, please visit our w
...lsparkwailuku.wixsite.com/wells

...Department of Parks and Recreation
Senior Planner, David Yamashita at 770



Master Plan Goals

- **Maintain existing uses.**
- **Provide new features that draw people into the park.**
- **Create an inviting pedestrian corridor along Wells St.**
- **Develop a stronger linkage between the Wailuku Gym site and Wells Park.**
- **Improve access into the park.**
- **Provide more shade and places to sit.**
- **Create a central gathering place.**
- **Include improvements that allows Iao School to continue using the park.**
- **Consider maintenance considerations.**

Final Concept

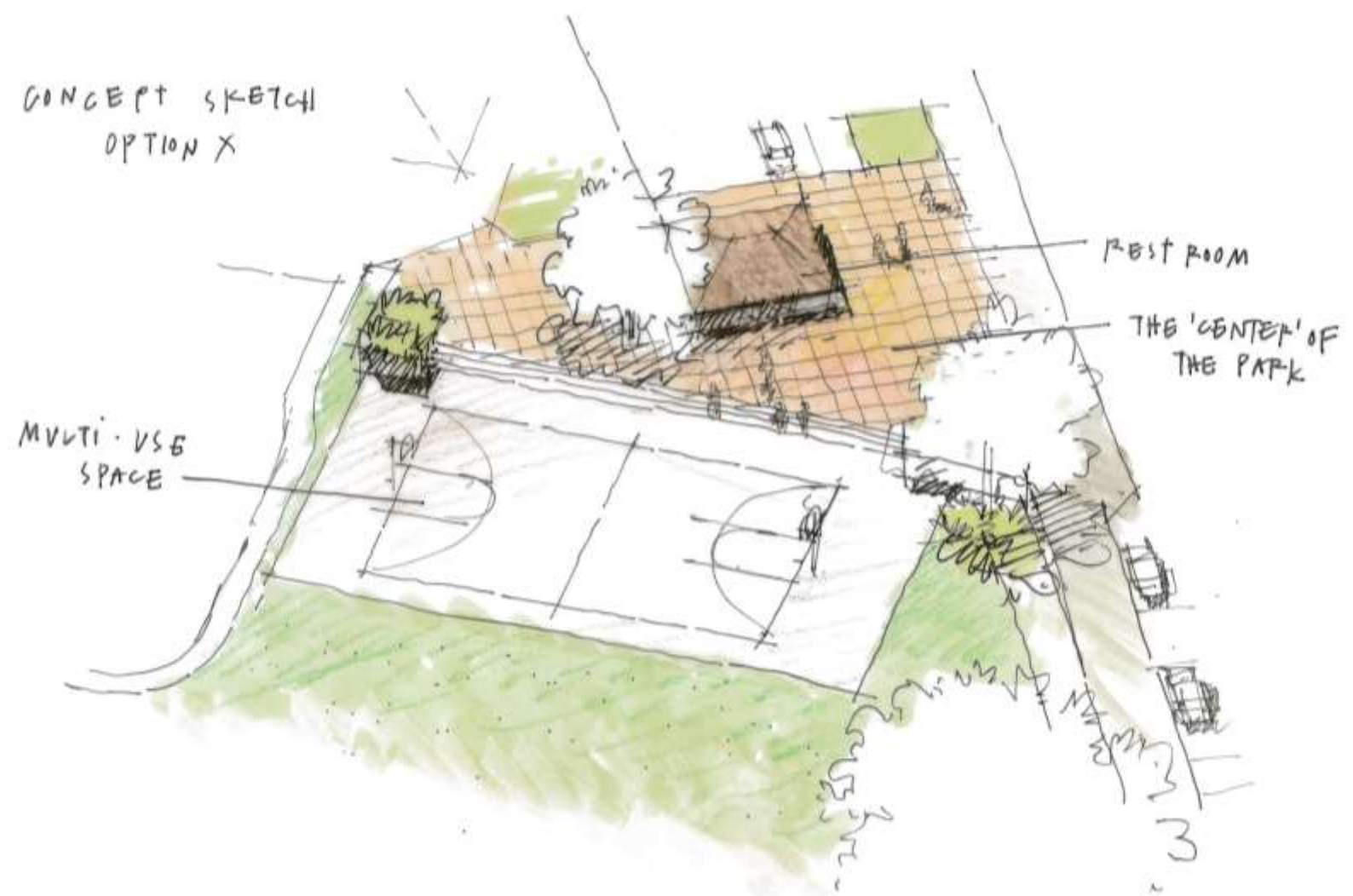








The Heart of the Park





PUBLIC ART ON THE GREENWAY

Matthew Hoffman
May 17th - Never End, 2016
High density polyethylene

Matthew Hoffman is a Chicago-based artist and designer who operates out of his studio May 17's Matthew. He is the founder & curator of the The Art Beautiful project, which has shared over two million pieces, installations, and interventions with the world.

Hoffman's text-based phrases in the public level. Often the art set an object and and continue to reflection of the

Hoffman's is Times Magazine books by the Oprah



Tell the Story



COSTS & PHASING

The redevelopment of Wells Park will likely be done in phases. With this in mind, the park has been divided into three areas or phases as shown at right.

Preliminary costs for each phase or area are shown below, in the order in which the work would be done.



1	2	3
KEY ACTIONS	KEY ACTIONS	KEY ACTIONS
<ul style="list-style-type: none"> • New accessible restroom • Multi-purpose court • Court improvements • Lighting for walkways, courts & parking • Entry plaza 	<ul style="list-style-type: none"> • New paved walkway around park • Outdoor exercise equipment • Improvements to sports fields • Batting cage • Trees and benches • Covered basketball court • New parking lot 	<ul style="list-style-type: none"> • New/improved aquatics facilities • Multi-use facility and locker rooms • Basketball half-court • Outdoor multi-purpose space next to new facility
\$10,700,000*	\$12,823,000*	\$15,245,000*

* Includes costs for design, adjustment for location, contractor overhead and profit, bonds and insurance, GET, and contingency. Costs do not include the preparation of an Environmental Assessment, which could add approximately \$150,000.

**Wells Park can once again reclaim it's
role as the center of community life in
Wailuku- the place where there's always
something to do and see.**