

ADEPT Committee

From: Axel I. Beers
Sent: Thursday, June 22, 2023 10:24 AM
To: ADEPT Committee
Cc: James G. Krueger; Ellen B. McKinley; Kate Griffiths; Gabe Johnson
Subject: ADEPT-12 Rooted Kekahi Me Ka Aina Presentation
Attachments: Wetland Protection for Kula Kai.pdf

Aloha, staff,

Please see the attached document from Rooted Kekahi Me Ka Aina for its presentation on ADEPT-12.

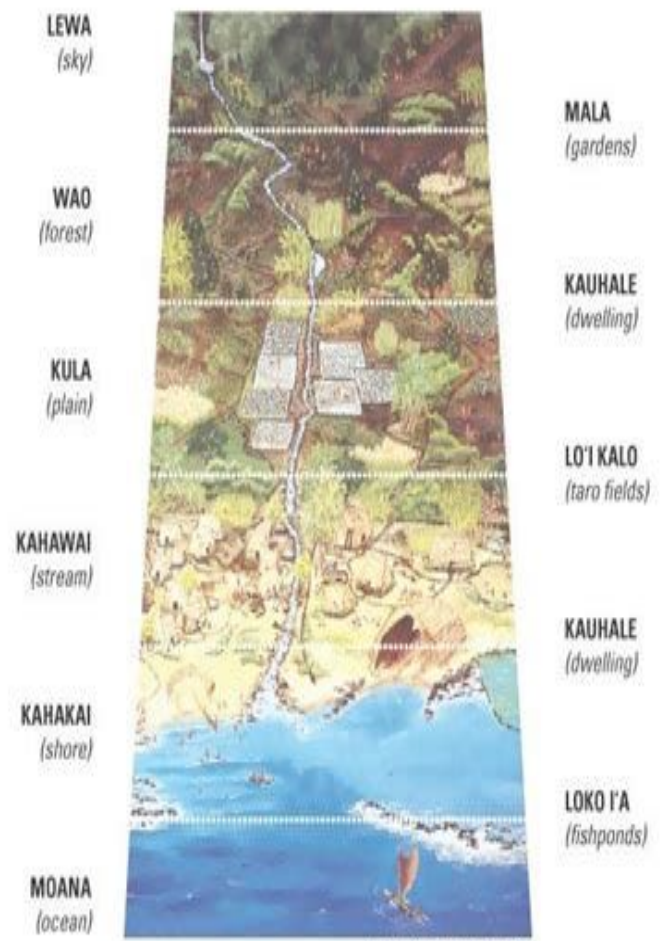
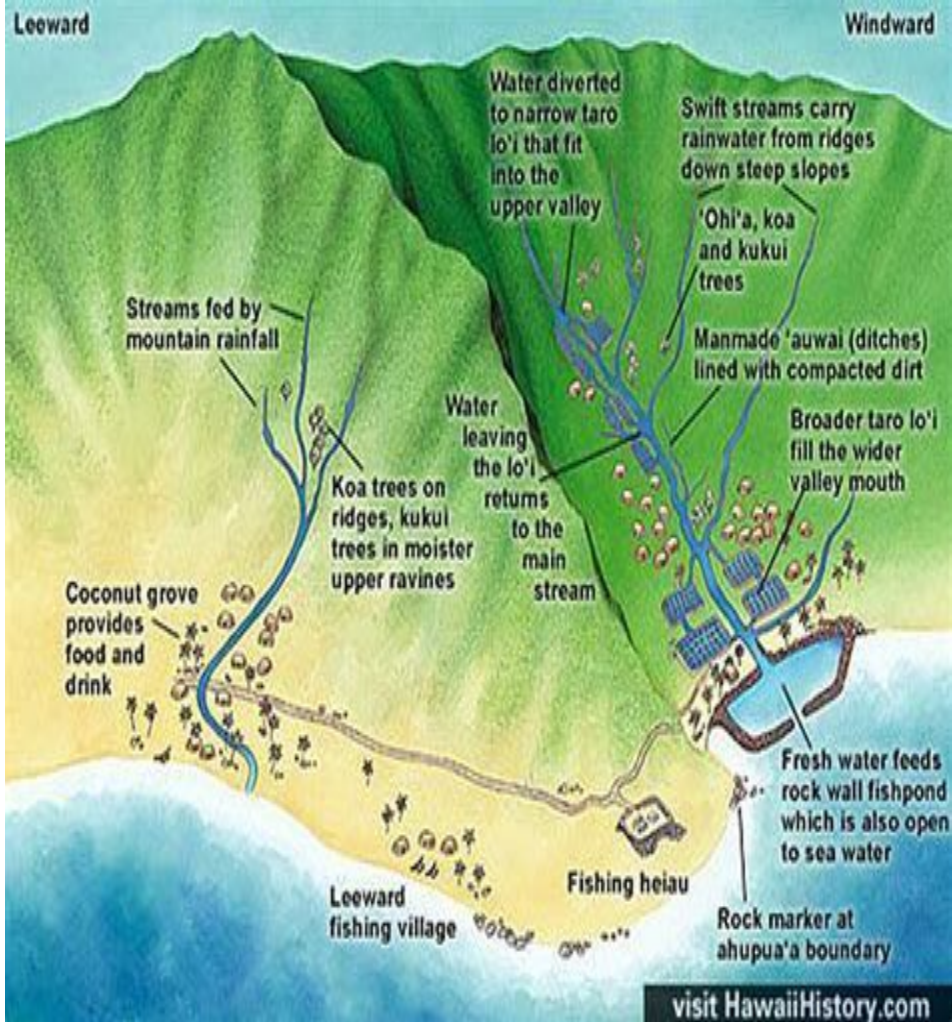
Thank you,
Axel



Axel Beers, Executive Assistant
Office of Councilmember Gabe Johnson
200 South High Street, 8th Floor
Wailuku, HI 96793
<http://mauicounty.us>

Wetland Protection for Kula Kai

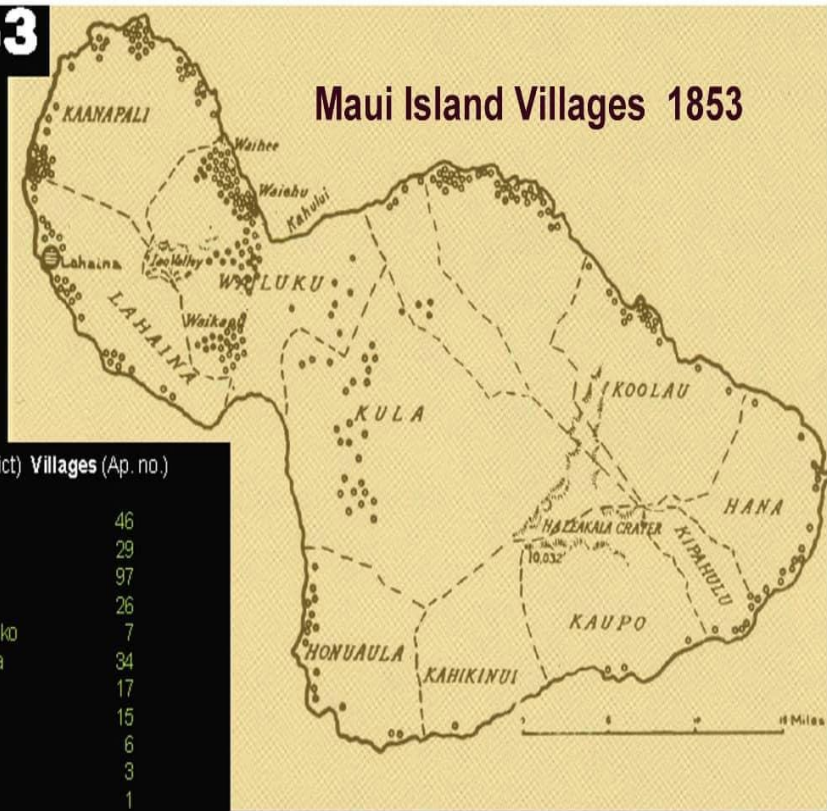
Kula Moku-Waiohuli, Kaonoulu, Keokea Ahupuaa
Waipuilani and Kulanihakoi wetlands
Waipuilani/Government Beach Reserve



NOTE: COURTESY KARENANNE SMOLE

1853

Maui Island Villages 1853



Moku (District)	Villages (Ap. no.)
Ka'anapali	46
Lahaina	29
Waipuhia	97
Waiahu	26
Kahului	7
Wailuku	34
Waikapu	17
Kula	15
Koolau	6
Hana	3
Kipahulu	1
Kaupo	15
Honuaula	
Kahikinui	

Source: Coulter, John Wesley, *Population and Utilization of Land and Sea in Hawaii, 1853*. Honolulu: Bishop Museum, 1931

The Hawaiian land tenure and land use system supported a population that in 1778 numbered in excess of 1 million persons. In 1853 there were almost 300 villages located in the twelve Moku on the island of Maui.



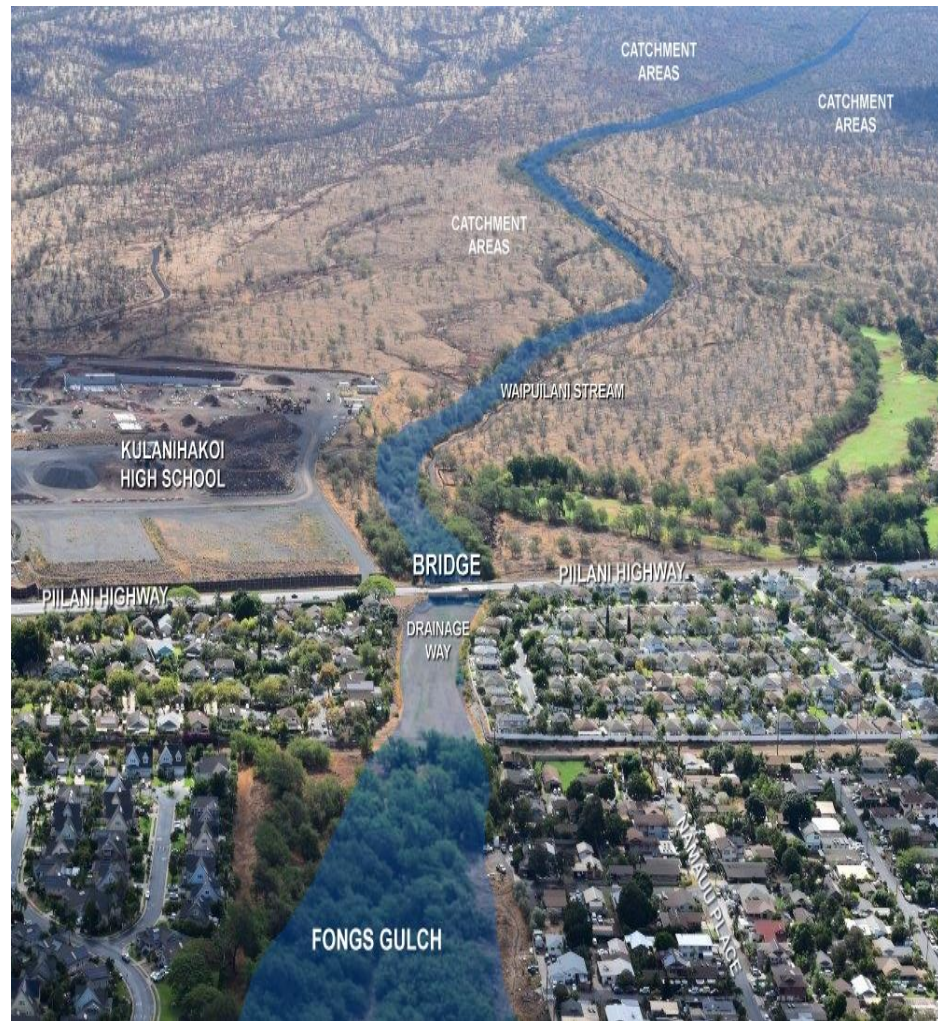
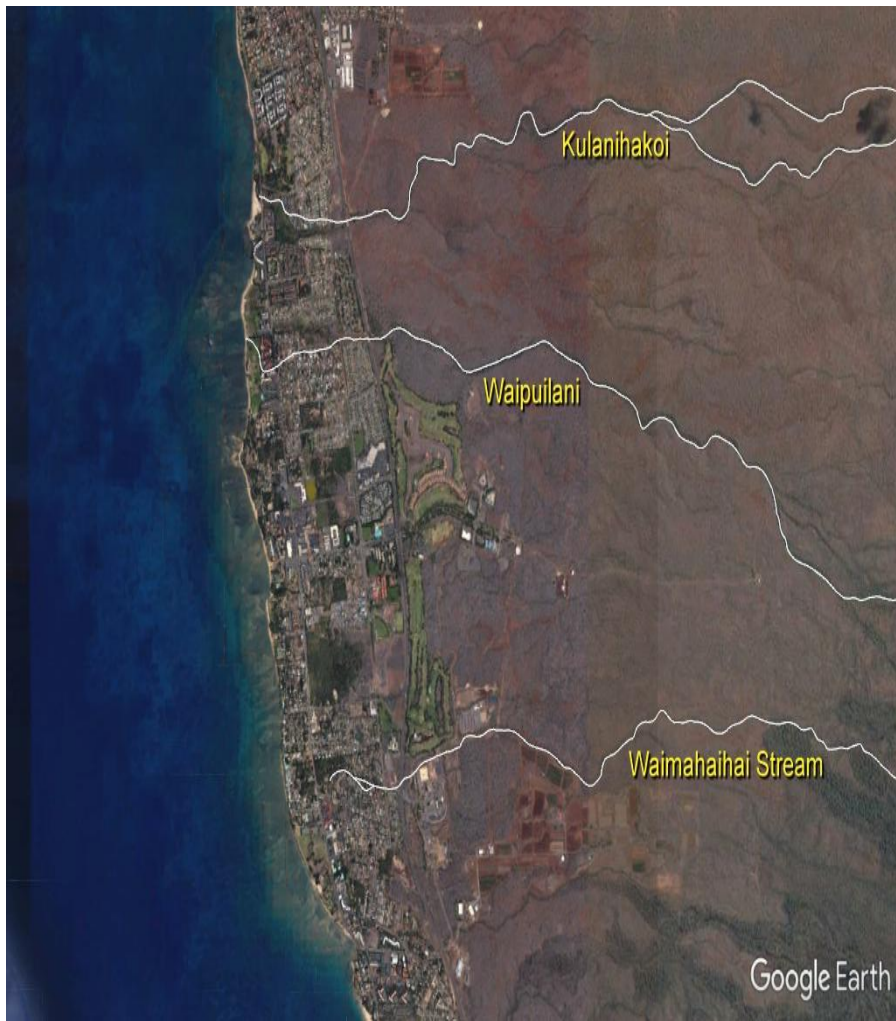
Kulanihakoi Gulch (wetland) is in the Kaonoulu Ahupuaa
Tax map key # 8, 9, 91

Waipuilani Gulch (wetlands) is in the Waiohuli Ahupuaa
Tax map key # 6, 89, 90

These gulch waters run straight through the Waipuilani Beach Reserve and directly affect our ocean and marine life below.




Waipuilani Beach Reserve (wetlands) are in the Kaonoulu, Keokea and Waiohuli Ahupuaa
Tax Key # 34, 35, 40, 42, 48, 50, 51, 54, 55, 56, 57, 58, 68

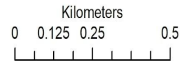
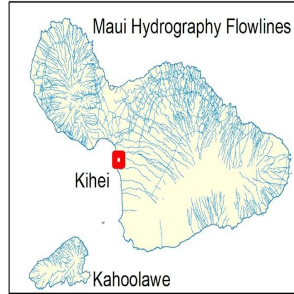
These parcels are owned by the State and have been disarray for more than 10 years



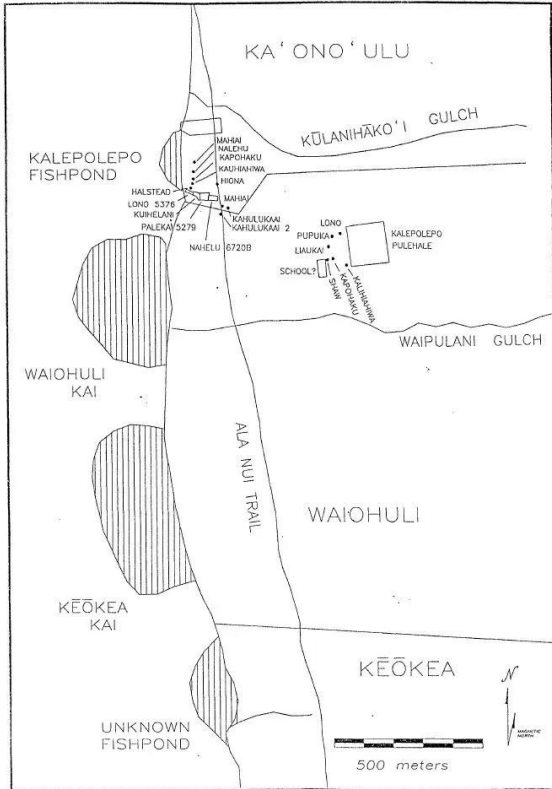
National Hydrography Dataset Flowlines USGS

This map depicts water flowlines in Kihei, Maui, near the Waipuilani Malama 'Aina restoration area. These areas will likely receive heavy flow during storm events.

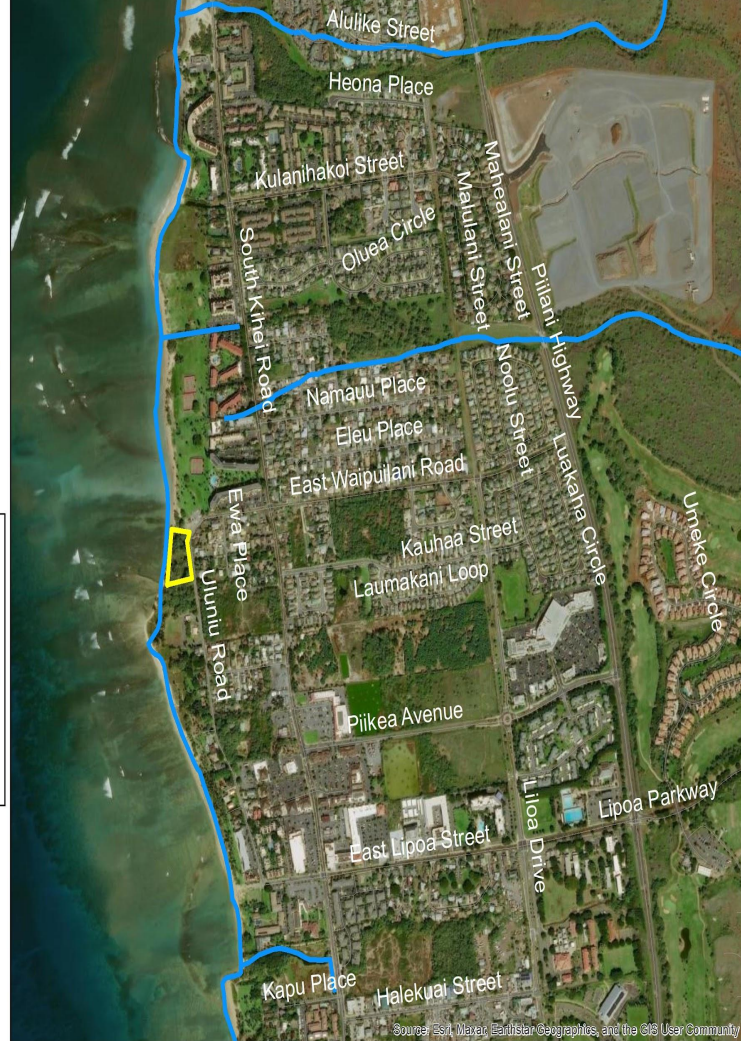
-  National Hydrography Dataset
-  Malama 'Aina
-  Maui Roads



Map Produced by Darla White 2022
Marine Ecological Consulting
for ROOTED Kekahi Me Ka 'Aina
Layers from the Hawaii Statewide GIS
& Maui County Department of Planning
Projection ESPG 3857; 1:12,000



Kalepolepo in the Nineteenth Century (Kolb 1995:63)



Source: Esri, Maxar, Earthstar Geographics, and the GIS User Community







This is Tax map # 6 and 89

An aerial photograph showing a coastal wetland area. A river flows from the left towards the bottom center, where it meets the ocean. The wetland is characterized by green vegetation and brownish water. In the background, there are residential buildings and a golf course. The ocean is on the right side of the image, with waves breaking on the shore.

WAIPUILANI
WETLAND

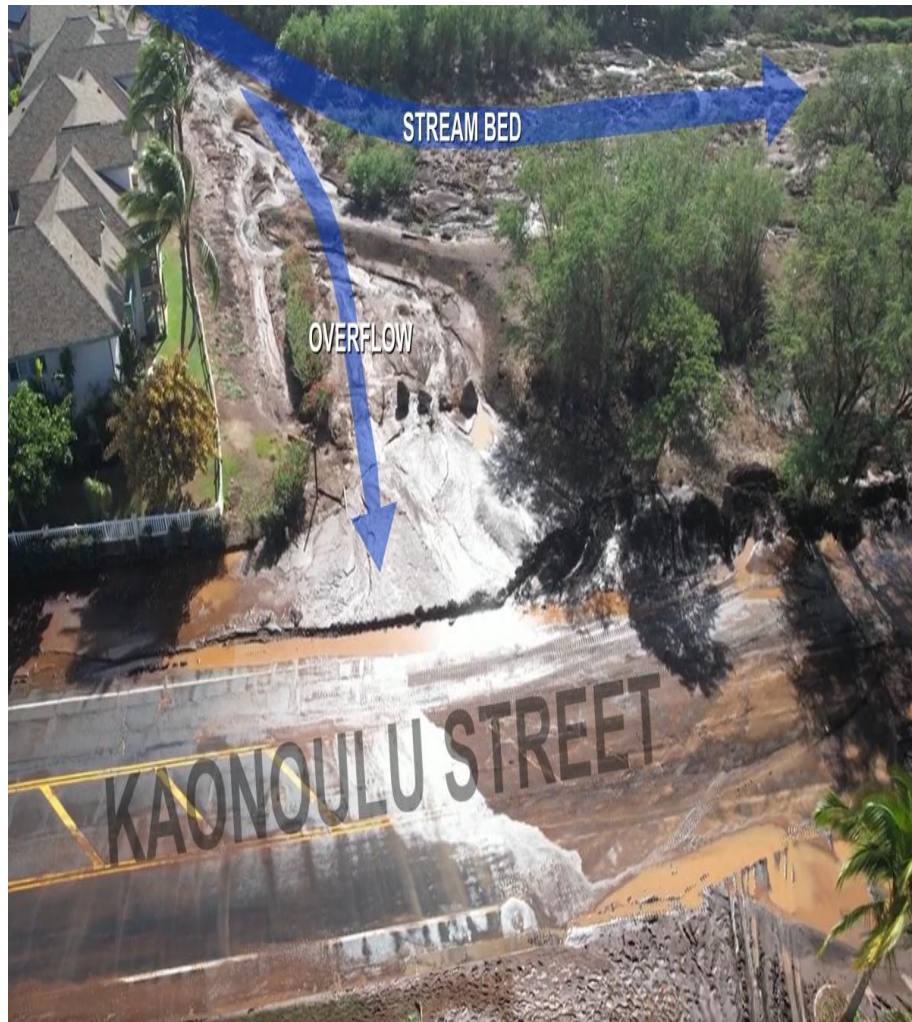
WAIQHULI-KAI
WETLAND





Waipuilani Gulch Bridge and flood plain







WAIPULANI GULCH STREAM





Waipuilani Beach Reserve and Gulch





Waipuilani Beach Reserve and Waipuilani Gulch



Waipuilani Park/ beach reserve after heavy rain and flooding



In between the Waipuilani Gulch and Waiapo street after heavy rain and flooding



Waipuilani Beach Reserve wetlands doing their job as a filtering system after heavy flooding



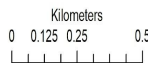
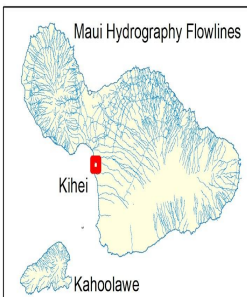
The Waipuilani gulch and Beach Reserve



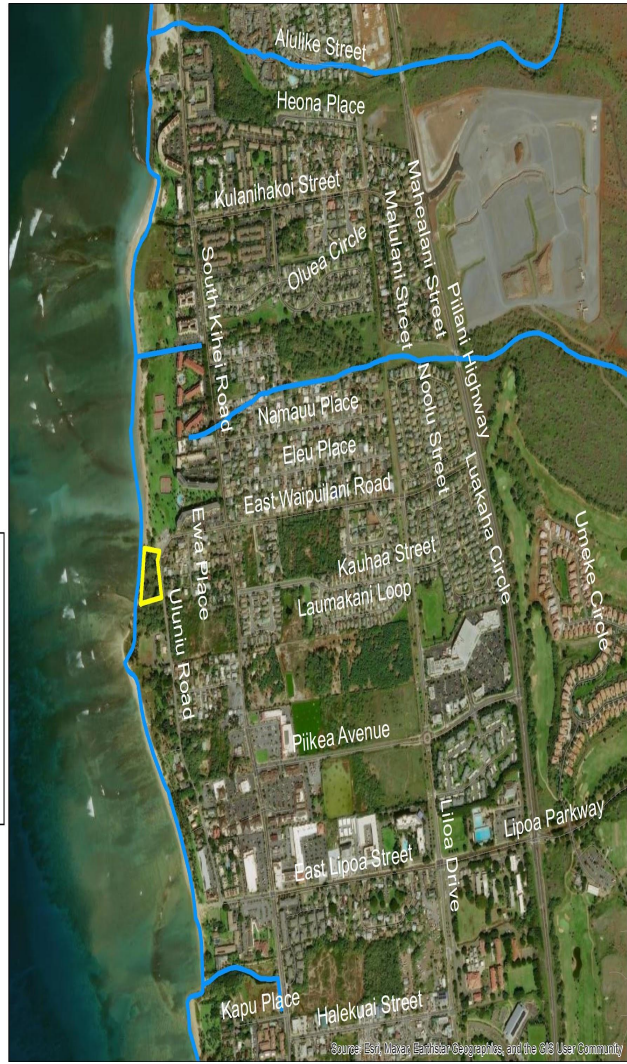
National Hydrography Dataset Flowlines USGS

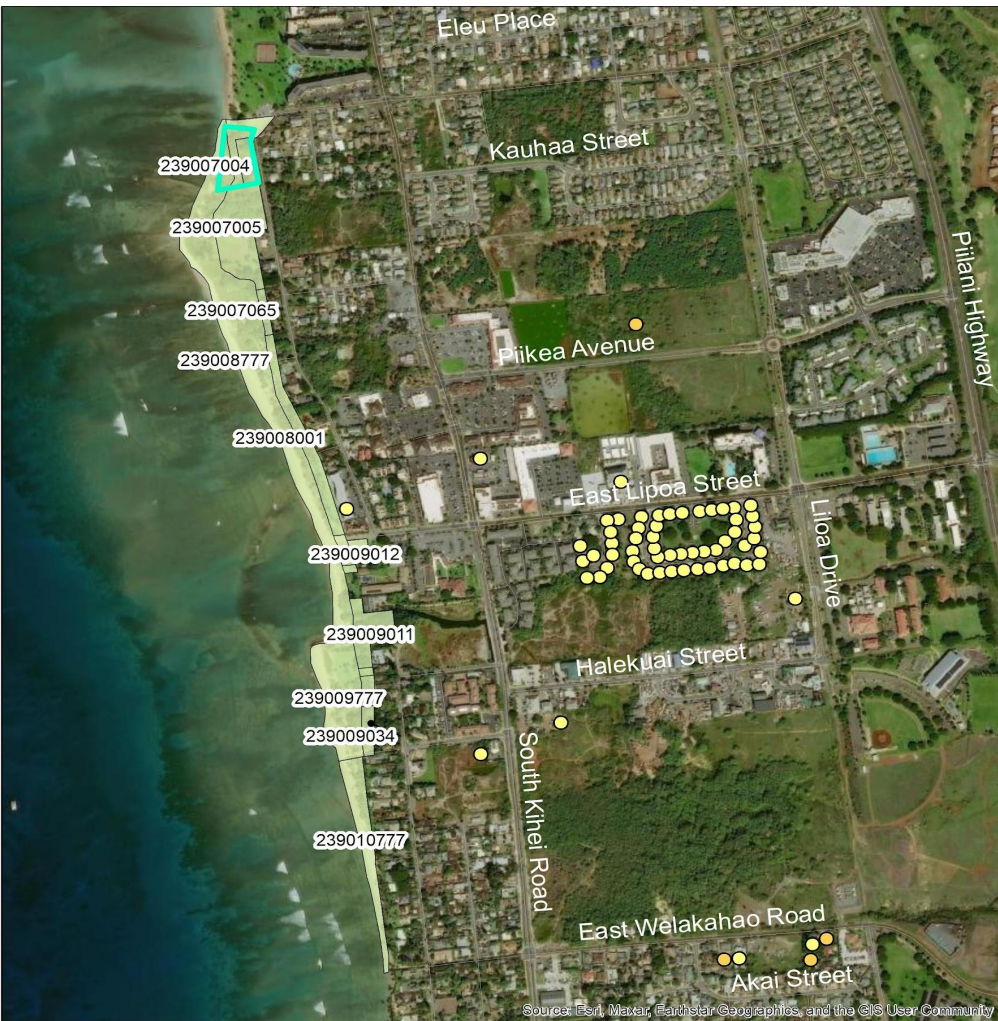
This map depicts water flowlines in Kihei, Maui, near the Waipuilani Malama `Aina restoration area. These areas will likely receive heavy flow during storm events.

- National Hydrography Dataset
- Malama `Aina
- Maui Roads



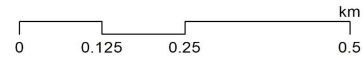
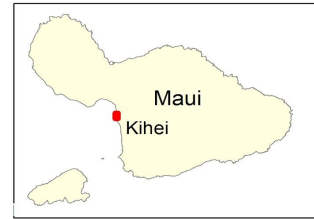
Map Produced by Darla White 2022
Marine Ecological Consulting
for ROOTED Kekahi Me Ka `Aina
Layers from the Hawaii Statewide GIS
& Maui County Department of Planning
Projection ESPG 3857; 1:12,000





Waipuilani/South Maui Government Beach Reserve: Waiohuli Ahupua`a Demonstration Site

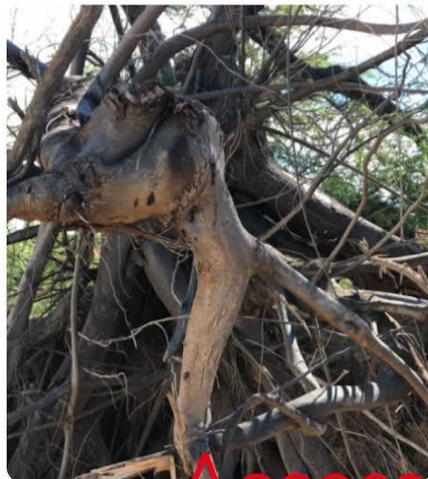
- Malama Aina
Parcel Owner
 State of Hawaii
 Maui County
 State and County



Map Produced by Darla White 2022
Marine Ecological Consulting
for ROOTED Kekahi Me Ka Aina
Layers from the Hawaii Statewide GIS
& Maui County Department of Planning
Projection ESPG 3857; 1:5,000







Access denied









Waipuilani Gulch flood damages



Kulanihakoi Gulch flood damages