

Mauna Kahalawai



Pu'u Kahili

o'o ahia



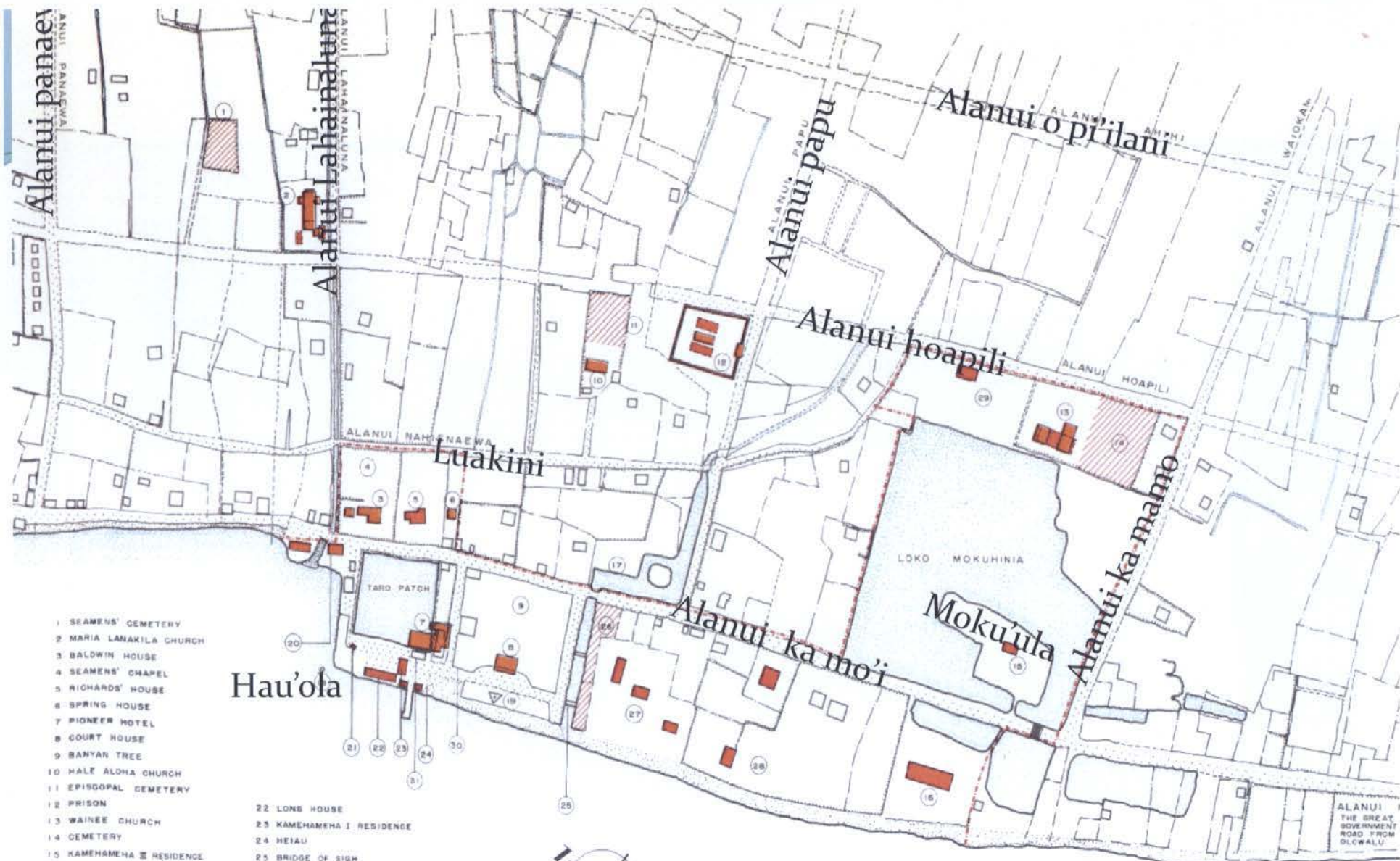
Ma



Moku'ula

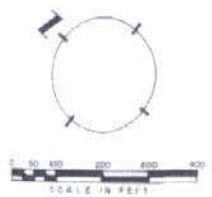


HFC-3



- 1 SEAMENS' GEMETERY
- 2 MARIA LANAKILA CHURCH
- 3 BALDWIN HOUSE
- 4 SEAMENS' CHAPEL
- 5 RICHARDS' HOUSE
- 6 SPRING HOUSE
- 7 PIONEER HOTEL
- 8 COURT HOUSE
- 9 BANYAN TREE
- 10 HALE ALOHA CHURCH
- 11 EPISCOPAL GEMETERY
- 12 PRISON
- 13 WAINEE CHURCH
- 14 CEMETERY
- 15 KAMEHAMEHA III RESIDENCE
- 16 KAMEHAMEHA III PALACE
- 17 CANAL
- 18 HAULOA STONE
- 19 CANNON MOUNT
- 20 CHINESE STORE
- 21 OBSERVATION TOWER

- 22 LONG HOUSE
- 23 KAMEHAMEHA I RESIDENCE
- 24 HEIAU
- 25 BRIDGE OF SIGH
- 26 HAWAIIAN MARKET PLACE
- 27 ROYAL RESIDENCE
- 28 NAHIEHAENA HOUSE
- 29 GOVERNOR HOAPILI'S HOUSE
- 30 FORT
- 31 U.S. CUSTOM HOUSE



Au'au

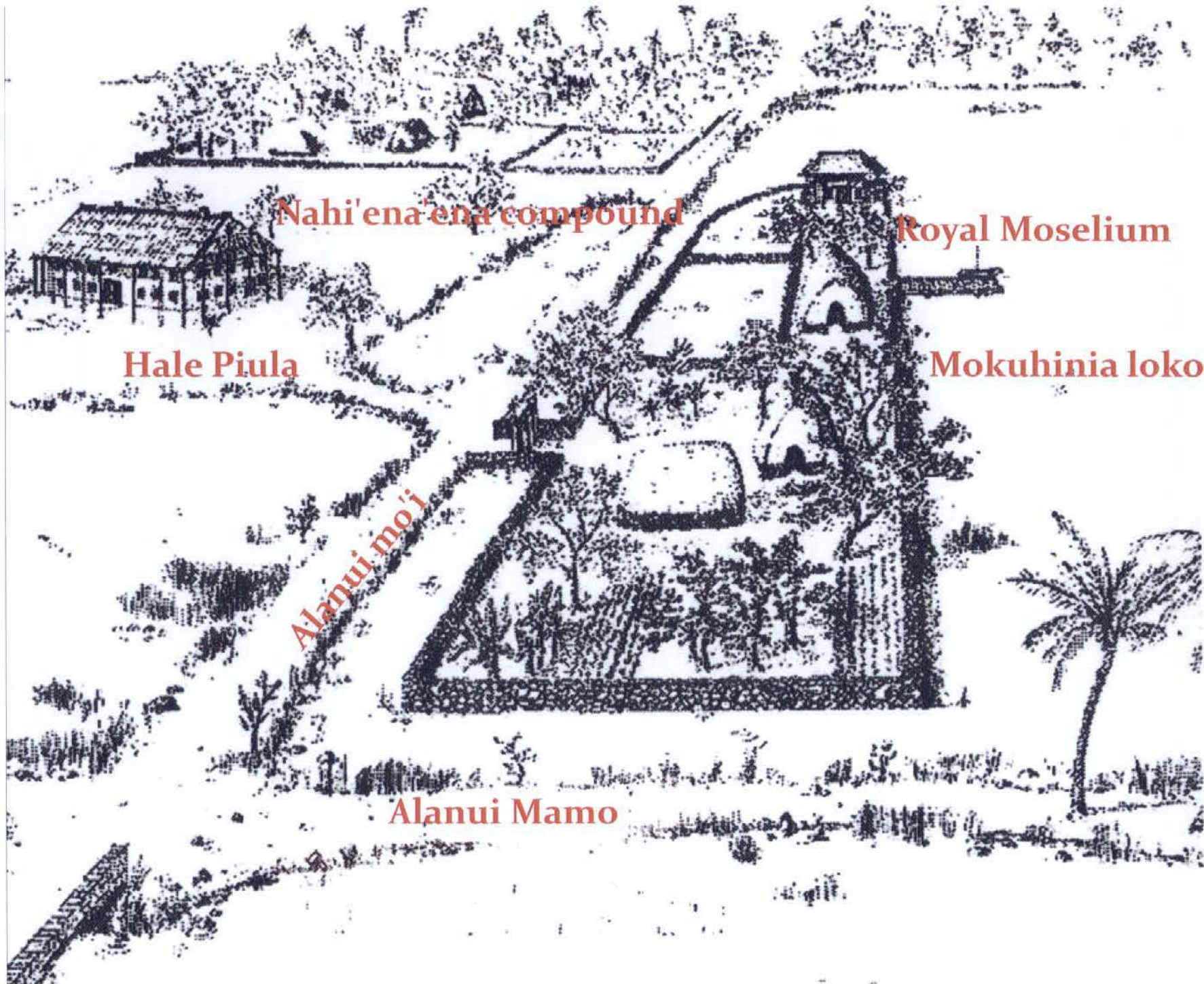
Uo

Ka limu a pi'ilani



MOKUHINIA





Nahi'ena'ena compound

Royal Moselium

Hale Piula

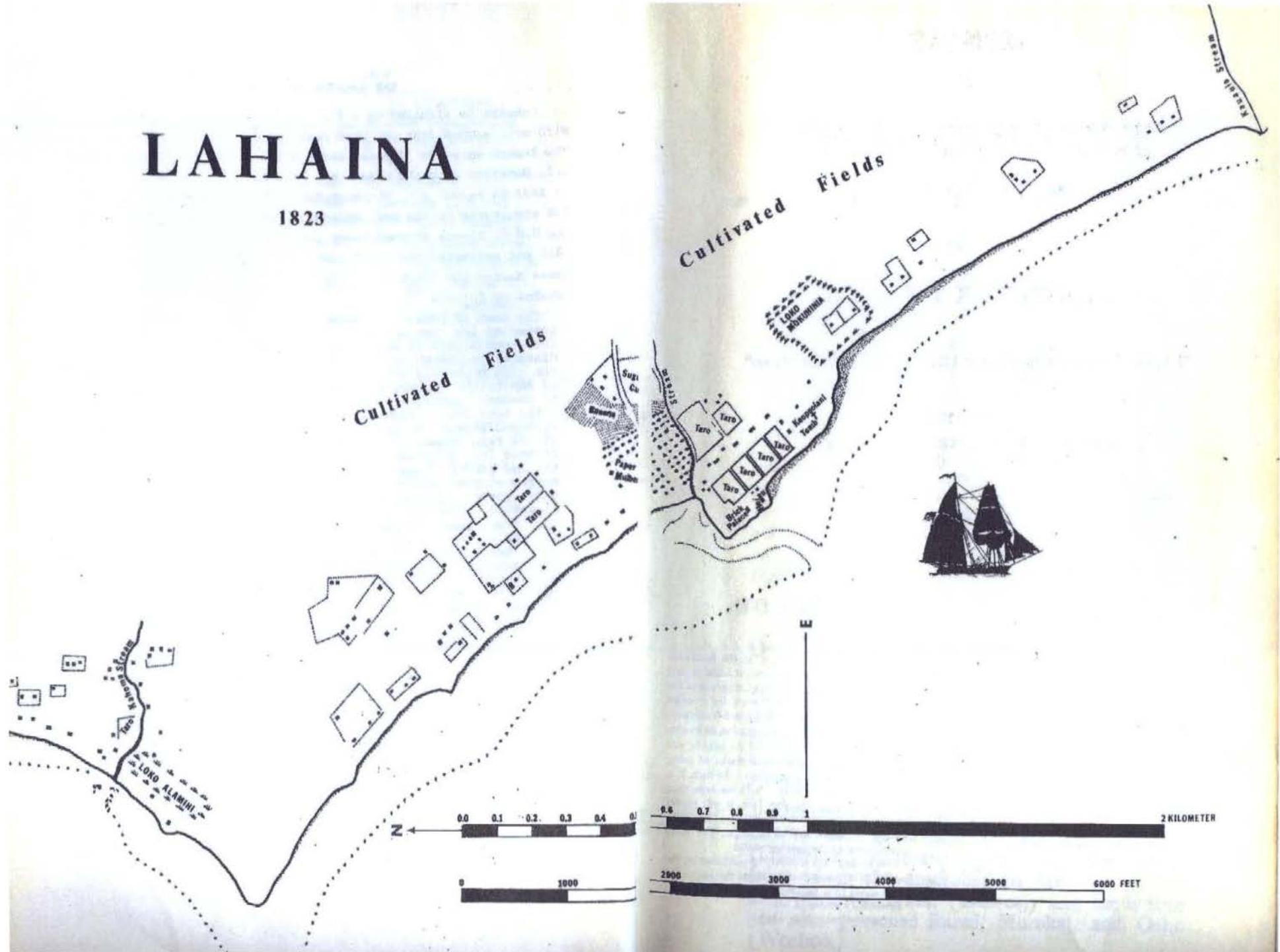
Mokuhinia loko I'a

Alanui mo'i

Alanui Mamo

LAHAINA

1823



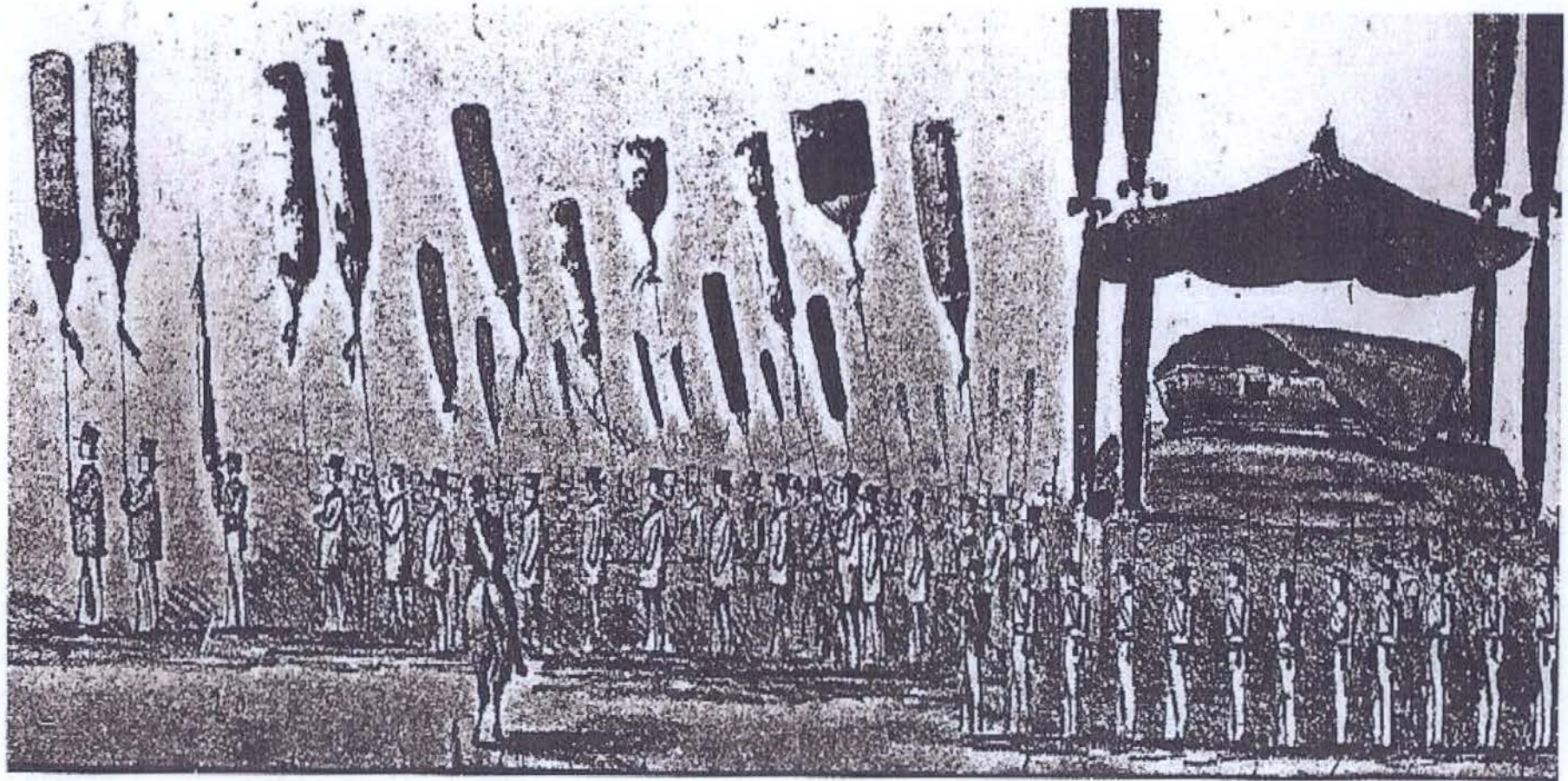


Prophetic vision of Keopuolani



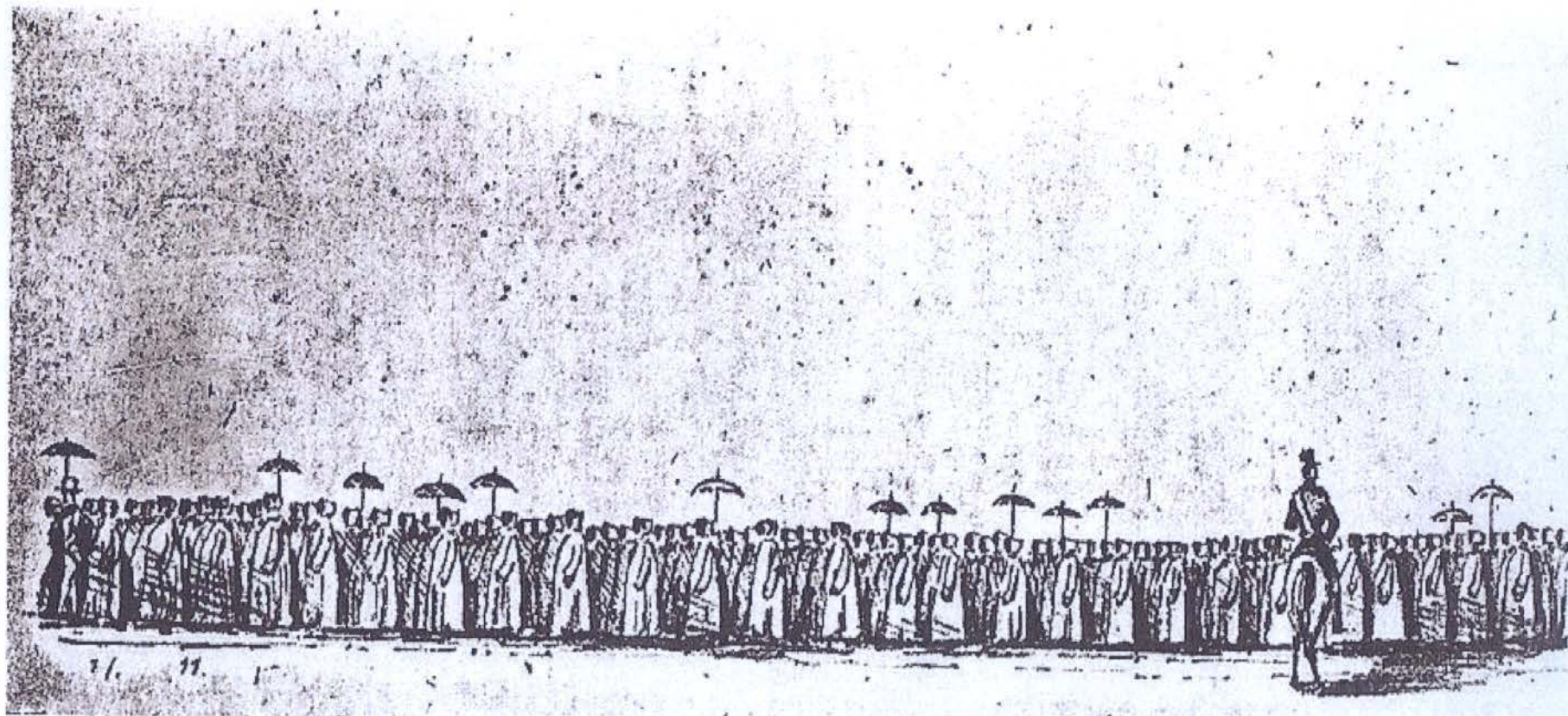
KAMEHAMEHA III

Funeral of his late majesty Kamehameha III
January 10, 1855



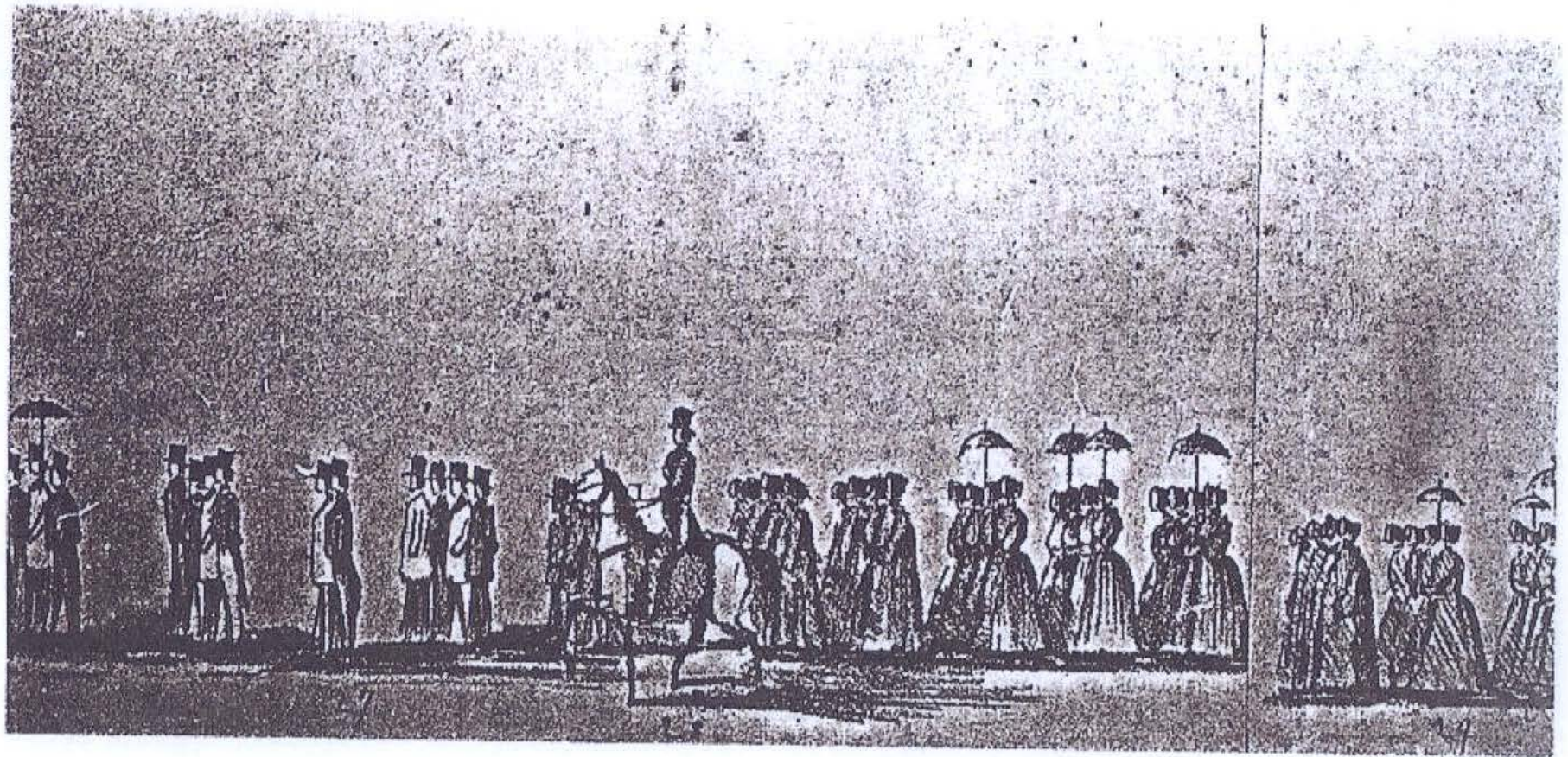
Sovereign's standard / kahili / catafalque

Funeral of his late majesty Kamehameha III
January 10, 1855



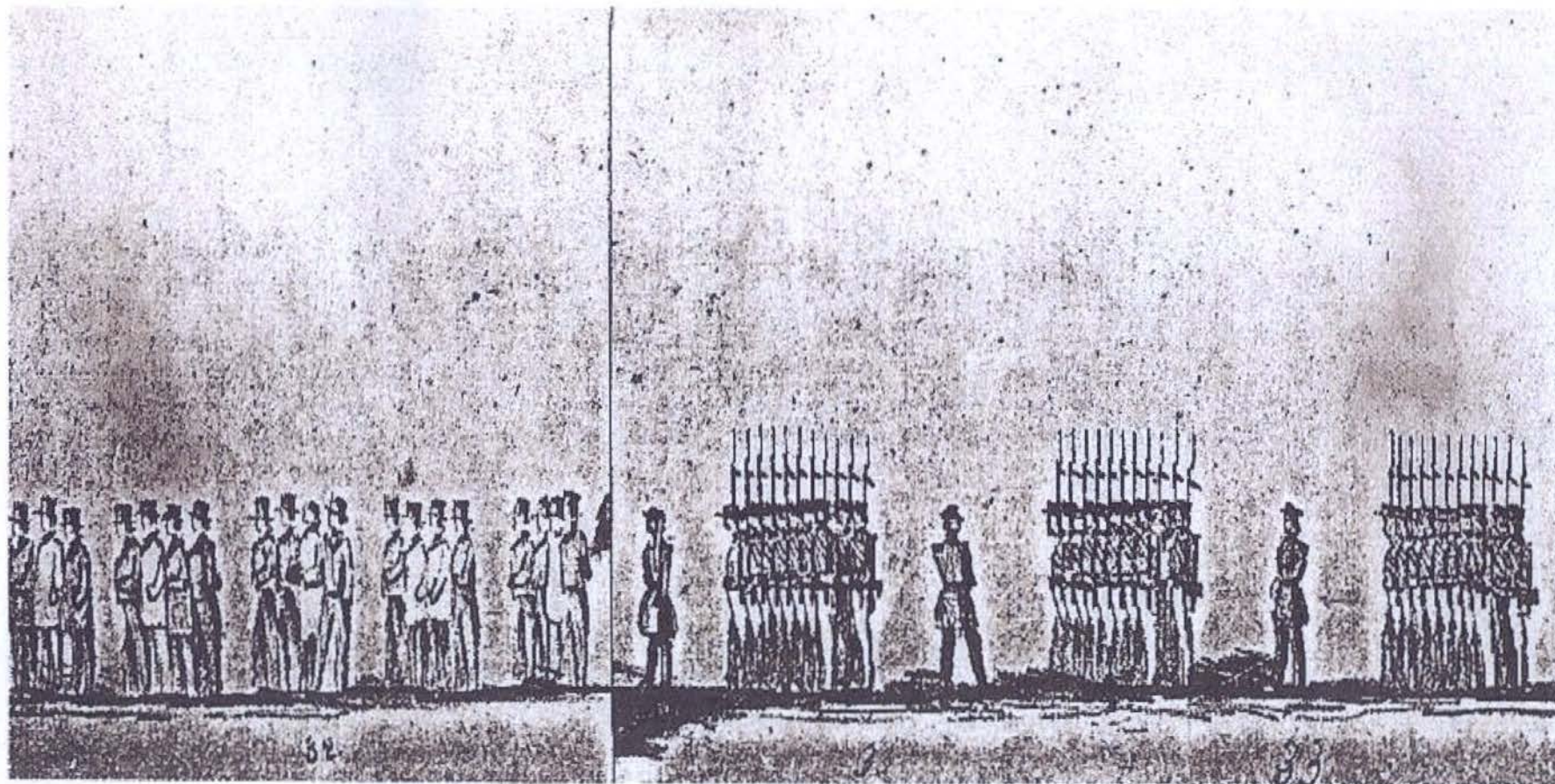
Hawaiian women

Funeral of his late majesty Kamehameha III
January 10, 1855



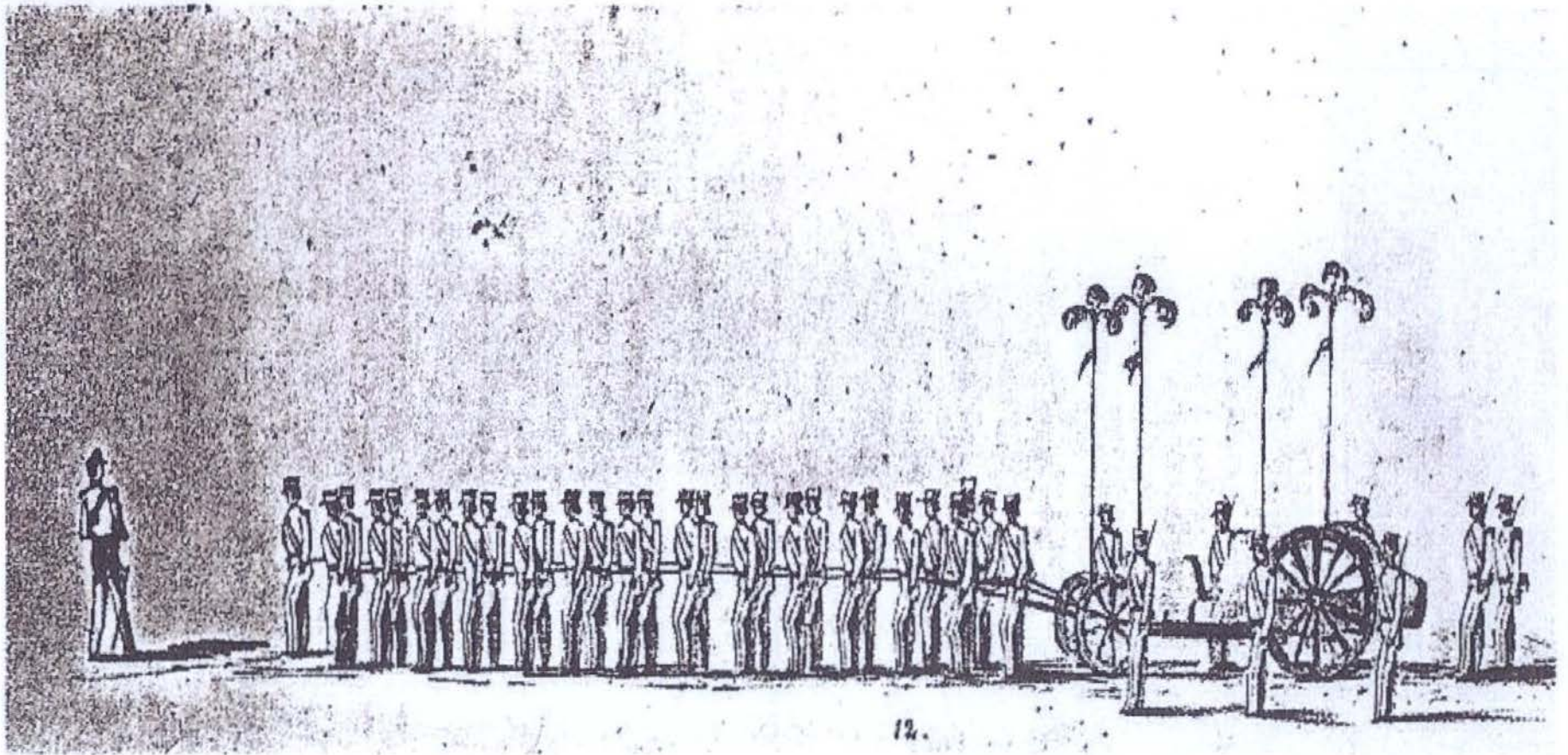
Diplomatic Corps / Marshal W.C. Parke / Ladies of the Court

**Funeral of his late majesty Kamehameha III
January 10, 1855**



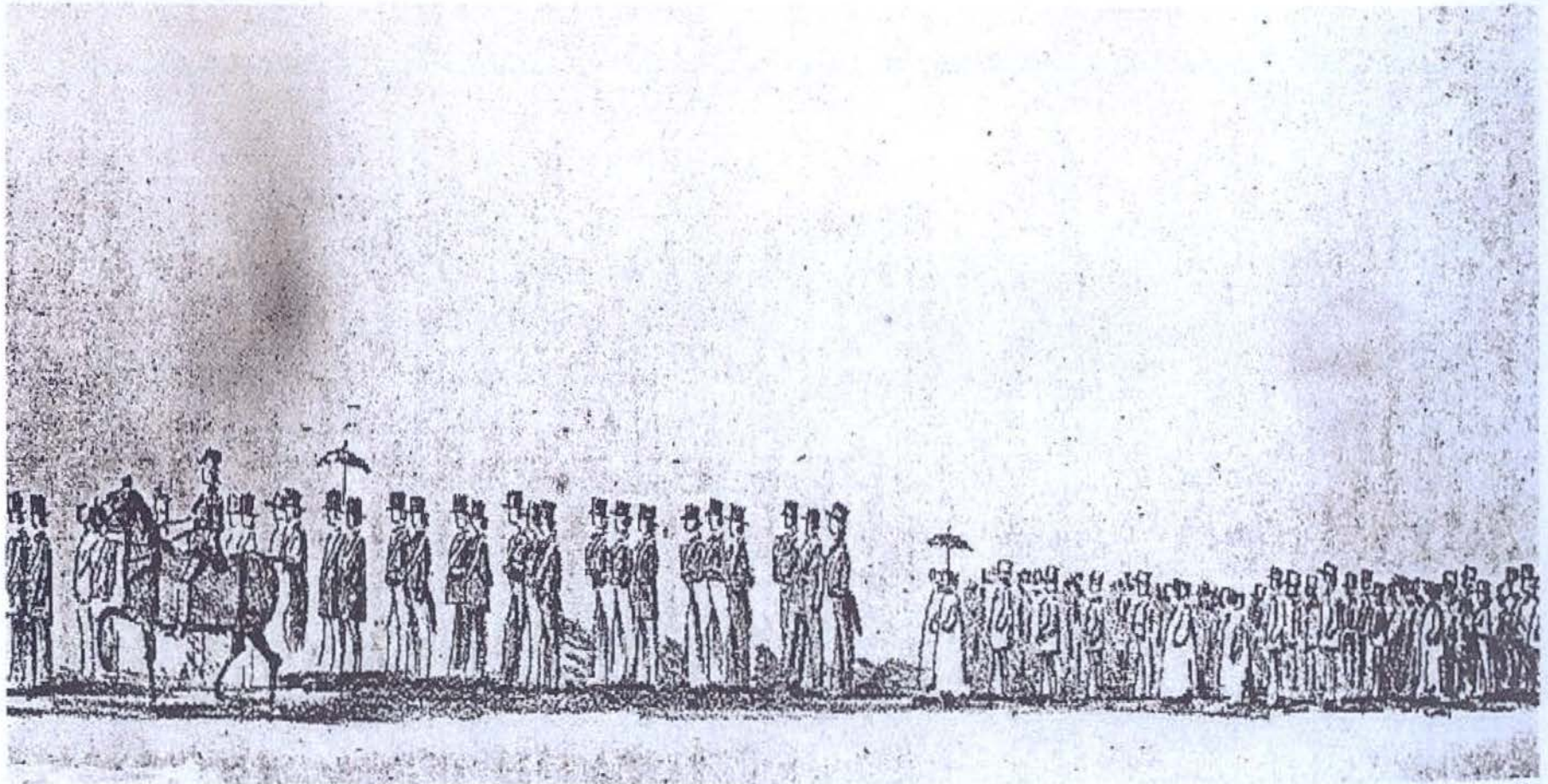
Civil Officers / 1st Hawaiian Guard

Funeral of his late majesty Kamehameha III
January 10, 1855



Artillerymen

Funeral of his late majesty Kamehameha III
January 10, 1855



Masonic Order / schools

**Funeral of his late majesty Kamehameha III
January 10, 1855**

Most important factors to consider

- Lahaina was the original capital of Hawai'i.
- Lahaina became the epicentre for politics, innovation and trade.
- Lahaina lead Hawaii by creating and adopting the first constitution. The Bill of Rights as well was signed by His majesty Kamehameha III Kauikeaouli here in Lahaina.
- These few basic facts practically unheard of by the average person, much less the many tourist that come to our shores.

Most important factors to consider

- Lahaina

- Lahaina
const
maje

- The
avera



on and

first
by His
aina.

he
me to



HOEA

(The return of)











code of conduct

- 1 E MĀLAMA PONO i ka
ʻāina a me kāu hana.
- 2 E ʻIMI I KA MANAʻO o ka
poʻe lāna i aʻo ʻia mai ko
lākou mau māhala mai a
me nā kōpuna no nā
kumu waiwai o ka ʻāina.
- 3 MAI ʻUHAʻUHA, E lawe i
ka mea kōpono wale nō.
- 4 E MĀLAMA PONO i nā kau
hānau a me nā pua ʻia.
- 5 E MĀLAMA i ka palekana
o ka poʻe kāmaka, nā
pono a haʻi, a me nā
kumu waiwai.
- 6 E HOʻIKÉO i nā kānawai
lawaiʻa a me nā kala.
- 7 E HOʻOHANA i nā
pono lawaiʻa kōpono
a e hana pono.
- 8 E ʻOHIOHI I KĀU ʻŌPALA.
- 9 E MĀHELE i ka loaʻa.



*Na Loia
Kupono
a ka Poʻe
Lawaiʻa*

Hele i ka ʻŌhiʻohe i Kāu ʻŌpala
Kūpono a me nā Kala
Kūpono a me nā Kala

//////

**E KOKUA
MA KA
MALAMA
PONO ANA
I KEIA
WAHI
KAHIKO**

//////

MAHALO

HOOPAIIA KA HANA INO IA ANA O KEIA MAU
WAHI KAHIKO MALALO O KA MOKUHA
6E-11 O NA KAHAWAI I HOOLOLIIA O HAWAII.

WWW.KANEIOLOUMA.ORG | COUNTY OF KAUAI



//////

**PLEASE
KOKUA AND
DO NOT
DISTURB
THIS
HISTORIC
SITE**

//////

THANK YOU

DAMAGE TO THESE HISTORIC SITES IS
PUNISHABLE UNDER CHAPTER 6E-11 HAWAII
REVISED STATUTES.

WWW.KANEIOLOUMA.ORG | COUNTY OF KAUAI





A flag pole monument at Kamehameha park, which flies only His majesty King Kamehameha III Kauieaouli's personal standard, will draw locals and visitors alike to learn more about Lahaina.