



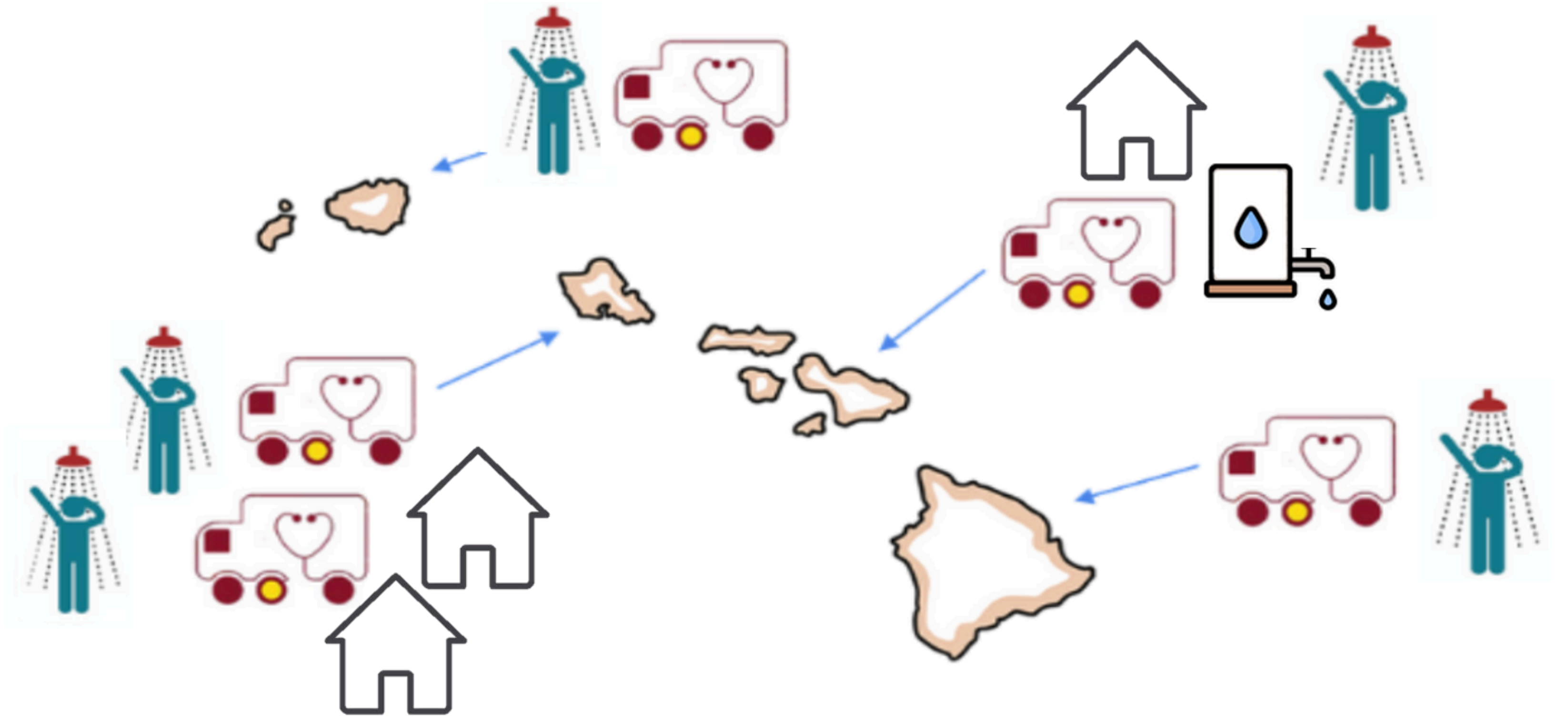
PROJECT VISION

About Project Vision Hawai'i

PVH is committed to increasing access to essential health and social services for the people of Hawai'i, with an emphasis on serving vulnerable communities

Received at 06/18/2024 WASSP Committee Meeting from
Project Vision Hawai'i





Project Vision Mobile Outreach

- Minority communities
- Homebound
- Congregate settings

- Public housing
- People experiencing homelessness
- Group home & treatment programs

- Jails & prisons



Outreach methods by mobile unit or by foot

- Mobile hygiene
- Street medicine
- Potable water
- Peer specialists
- Meals, supplies & clothing



Healthcare
Social services
Peer support



Workforce Development
Housing



Our Maui Fire Disaster Response

- Potable water to firemen and police
- Houseless outreach to locate our people
- Street medicine- wound care, refills, hotels/shelters
- Vision & hearing teams to replace glasses & hearing aids
- Housing support & case management
- Pu'uhonua O Nēnē shelter & work opportunities



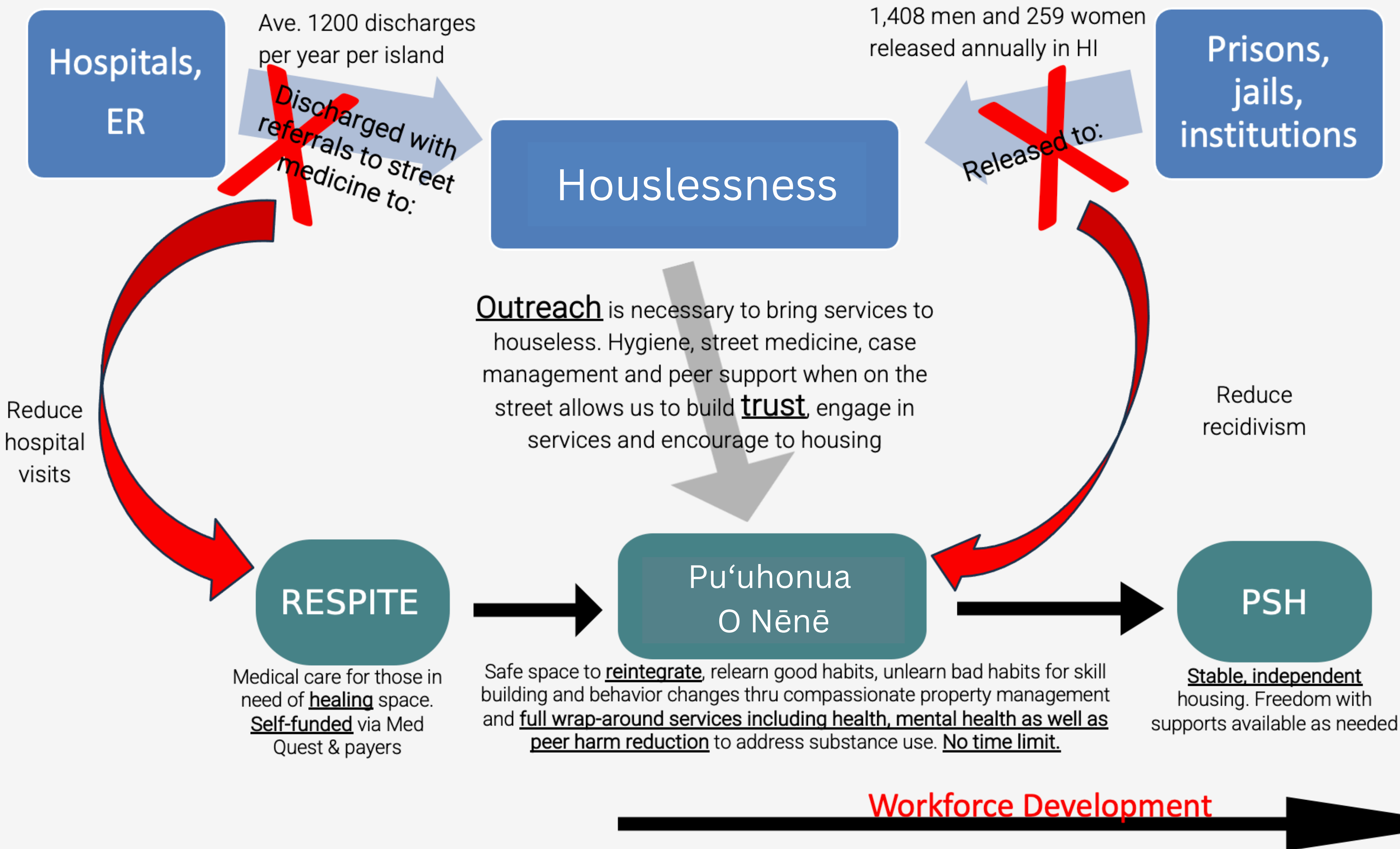


Hawai'i's Houselessness Rates

- ~15,000 houseless individuals in Hawai'i
- 1,500 — 2,000 chronically houseless individuals
- Maui PITC: 502 homeless adults (+ 106 keiki)
 - 120/410 homeless individual adults at Pu'u honua each night
 - 234 adults +14 keiki = 248 still on streets
- Avg. life expectancy = 53 (30 yrs lower than the general population)
- Higher rates of mental illness, addiction, and PTSD
- Disproportionately Native Hawaiian: 45/10,000 Hawaiian's experience houselessness



The Pathway



HOUSING VISION

Working with the Governor’s office, the Kauhale model is funded by the state and provides affordable housing options for houseless individuals

We follow low-barrier, person-centered, harm reduction philosophies which allow for direct intercepts from hospitals and the justice system, preventing houselessness.

Following the Governor’s “Housing Is Healthcare” model, the Kauhale Operators are committed to providing a holistic approach to healing and recovery. Our mission is to assist in providing care and resources with the following pillars required at each site.



Community

Creating a sense of belonging, safety, acceptance and non-judgement. A place where relationships are priority

Medical, Wellness & Respite

Healthcare including varieties of traditional and mental health care options is key to any progress

Social Services from Peer Supports

Resource navigation and support groups led by those who have been in the same position

Workforce Development

Skill building so each resident can contribute their talents to the community and themselves

Low - Barrier Shelter

Low Barrier Shelters follow housing first and harm reduction principles.

Houseless individuals with dual diagnosis, severe mental illness, and substance use are less likely to engage in traditional shelter services.

Individuals who suffer from severe mental illness and substance use are vulnerable to harm if left unsheltered.

Individuals who suffer from severe mental illness and substance use are often exited from traditional shelters services due to non-compliance issues.




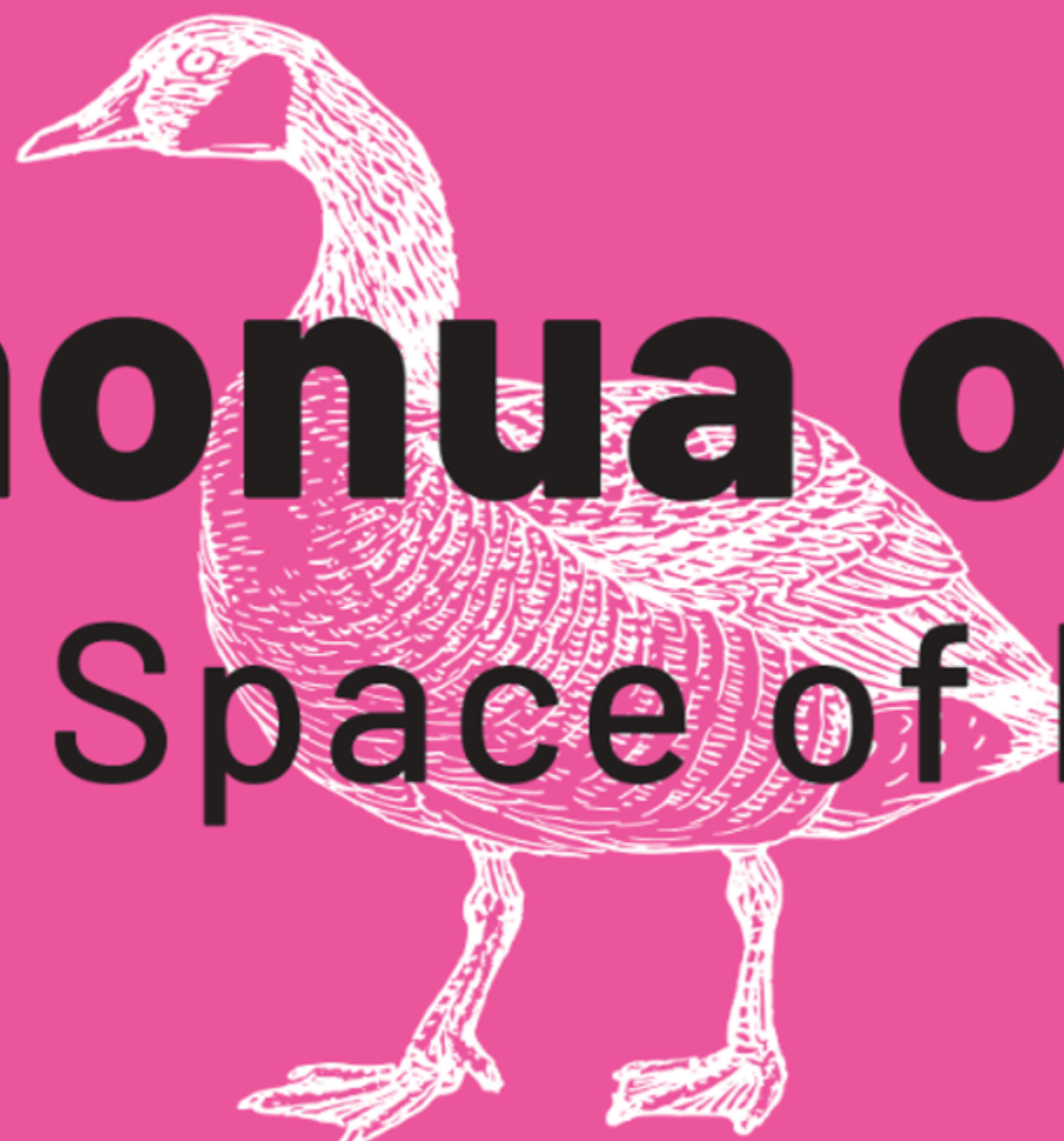


Harm Reduction Model



National Harm Reduction Coalition:

- Does not attempt to minimize or ignore the real and tragic harm and danger that can be associated with illicit drug use
 - Recognizes drug use is a realistic part of our world
 - Chooses to minimize harmful effects rather than simply ignore or condemn
 - Put people first
 - Establishes quality of individual and community life and well-being — not necessarily cessation of all drug use — as the criteria for successful interventions and policies
 - Celebrating small wins
 - Seeks to empower PWUD to share information and support each other in strategies
- 



Pu`uhonua o Nēnē

A Safe Space of Refuge



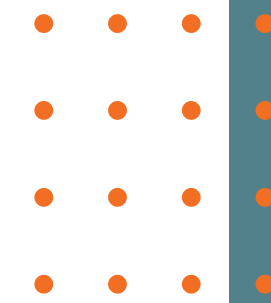
Pu'uhonua Shelter Data

Total # individuals served	392
Kupuna	67% highest
Self-identified behavioral health condition at intake	69%
Avg length of homelessness	3.4 years
# meals provided	127,782
Avg length of stay	108.66 nights
Residents insured	91%
Reunited with family	16



Challenges

- Off - grid
- Temporary group tents
- Gravel not ADA compliant, but construction coming soon
- Application and down payment fees
- Many participants with SMI (severe mental illness), who face systemic barriers to care
- Limited employee applicants on island with experience that matches level of acuity of residents



Free Services & Special Features

- 3 meals a day
- Restrooms, showers
- Mail & laundry services
- WiFi

- Health system
- Behavioral health services
- Cultural health and wellness services: 'Aina & body work, ho'oponopono, acupuncture, art and culture classes
- AA, NA, Harm reduction classes

- Community garden
- Community store
- Pet kennels



- 24/7 On-site security, security cameras
- Amnesty lockers

- ID and legal documents,
- MedQuest, SNAP, TANF, SSI, etc
- Case management services and referrals
- Transportation & care coordination

- Peer Workforce Development
- Community Council
- Resident-written newsletter
- Weekly movies, game nights, field trips & holiday celebrations



Kuleana Roles

- Food service
- Kupuna care → MA
- Cleaning
- Community Store
- Maintenance/building
- Gardening
- Admin/event planning
- Security



- Consistency
 - follow a schedule
 - complete tasks
 - participate in meetings

- ID
- Email
- Bank account
- Financial planning & taxes courses
- Resume & interview prep
- Job applications
- 3-6 months, all paid the same rate \$17/hr, up to 15 hrs/wk

- Job off campus
- Select a successor





Services:

- 24/7 intake, security, on call docs
- ADA compliant accessibility
- private room, shared bathroom
- on-site APRN-Rx 8hrs/day & MAs the other 16hrs/day
- psychologists and group therapy
- 3 meals a day (diet specific meals available upon physician order)

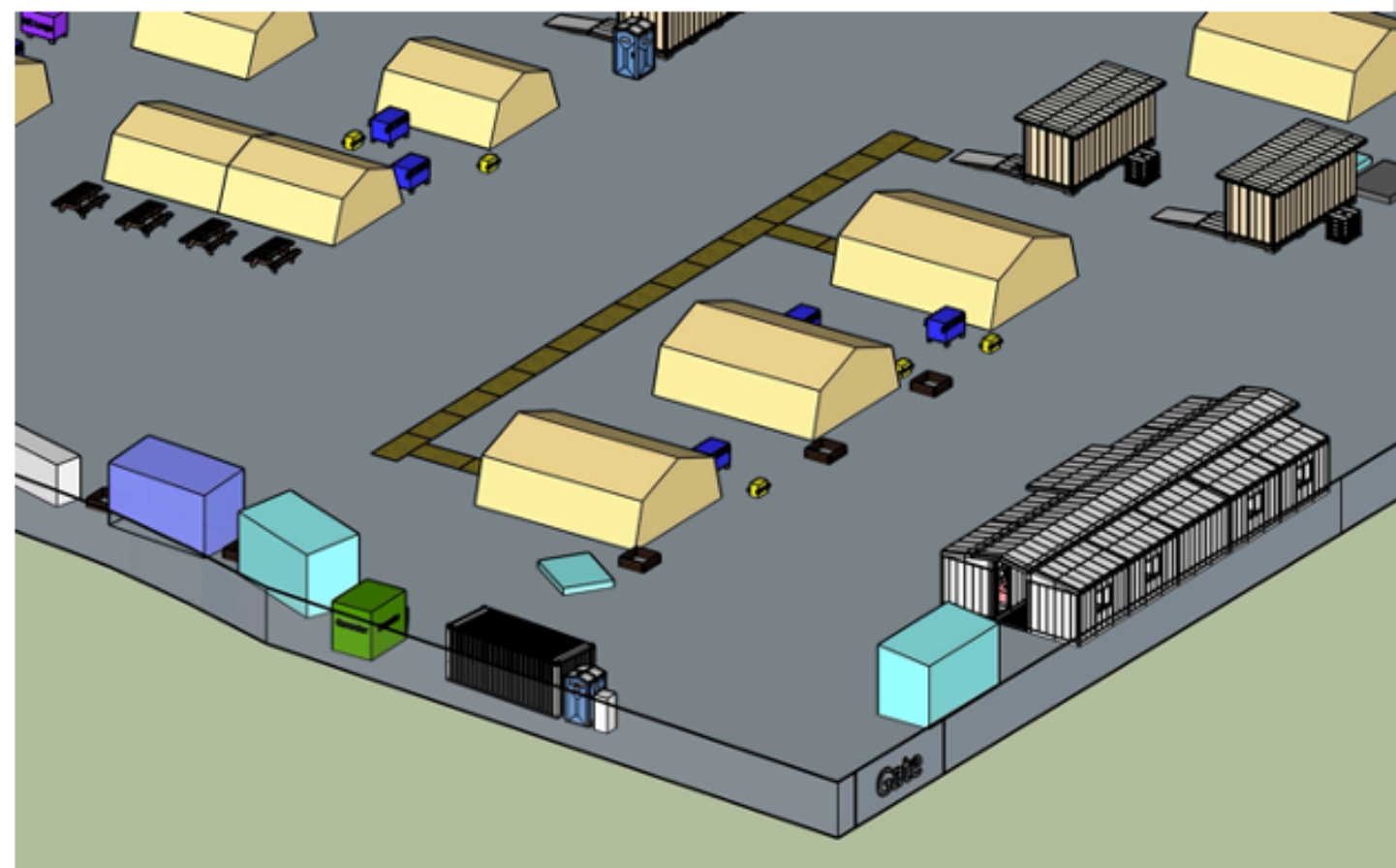
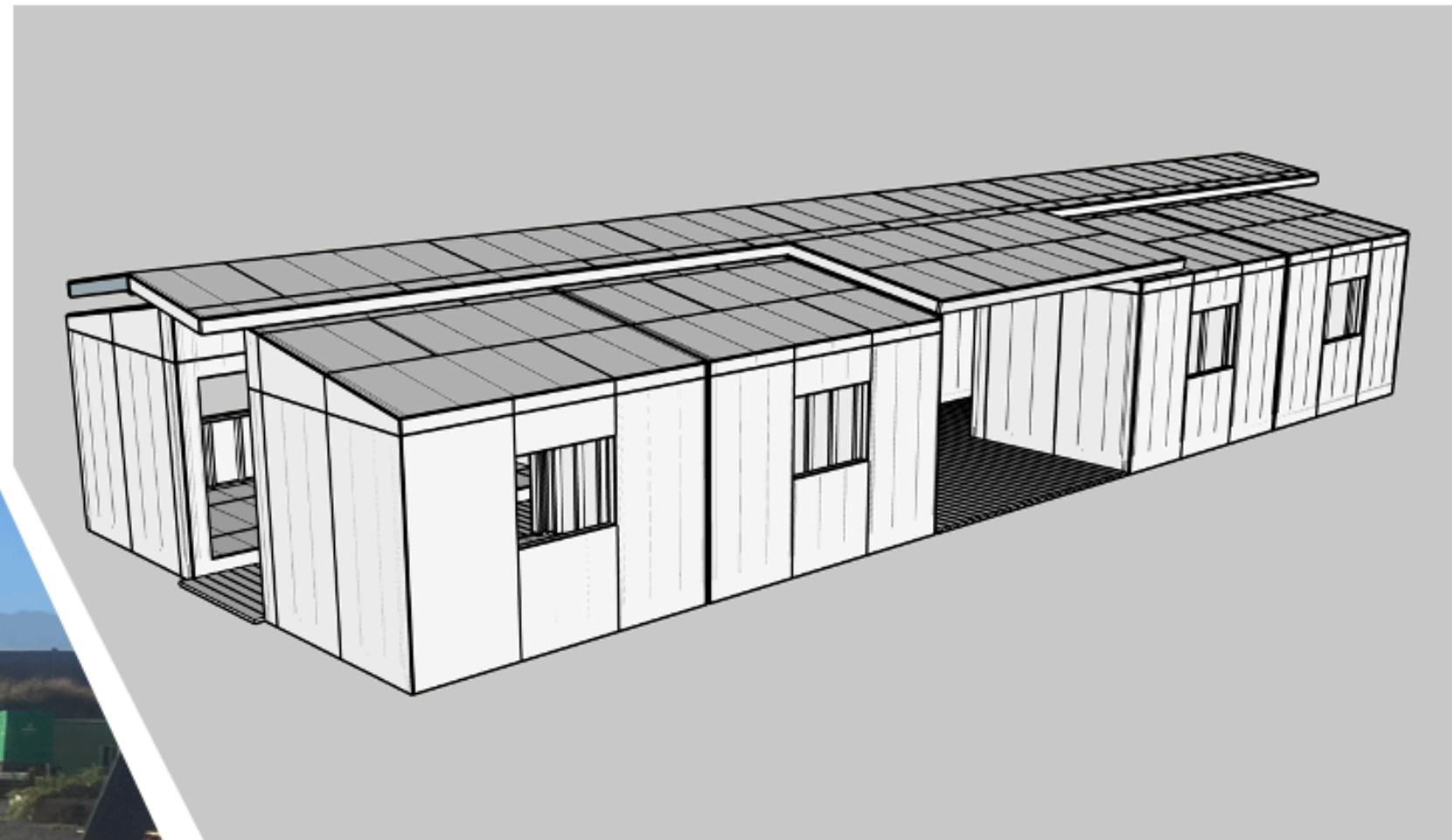


Pulama Ola Maui

Mahalo Red Cross \$35k for construction
& Kaiser \$185 respite operations, national
strategy & street medicine grants



- Resident built
 - Portable units
 - 8 patient rooms
 - 2 bathrooms
 - 1 nurse station
 - common area
 - ADA golf cart
 - transportation
 - Clinic, BH and wellness offices
- Timeline:
Phase 1- May,
Phase 2- June,
Phase 3-July



Thank You



Contact us: mauistrong@projectvisionhawaii.org