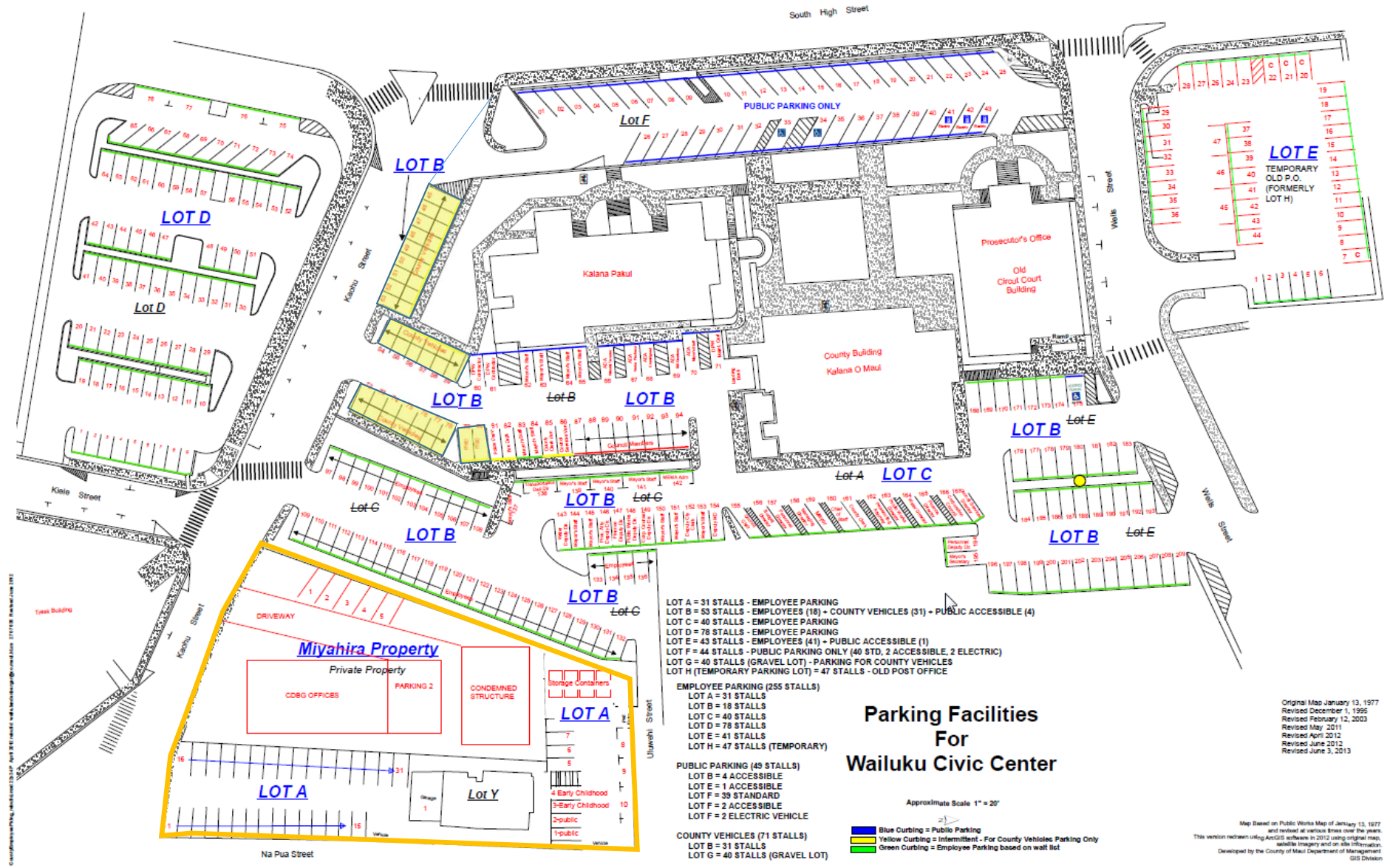


County Campus Parking Expansion Project

A Resolution to Dispose of Real Property

Requested by Department of Management
Water, Infrastructure, and Transportation Committee (WIT)
August 10, 2020

RECEIVED AT WIT MEETING ON 8/10/2020
Erin Wade



- LOT A = 31 STALLS - EMPLOYEE PARKING
- LOT B = 53 STALLS - EMPLOYEES (18) - COUNTY VEHICLES (31) - PUBLIC ACCESSIBLE (4)
- LOT C = 40 STALLS - EMPLOYEE PARKING
- LOT D = 78 STALLS - EMPLOYEE PARKING
- LOT E = 43 STALLS - EMPLOYEES (41) - PUBLIC ACCESSIBLE (1)
- LOT F = 44 STALLS - PUBLIC PARKING ONLY (40 STD, 2 ACCESSIBLE, 2 ELECTRIC)
- LOT G = 40 STALLS (GRAVEL LOT) - PARKING FOR COUNTY VEHICLES
- LOT H (TEMPORARY PARKING LOT) = 47 STALLS - OLD POST OFFICE

- EMPLOYEE PARKING (255 STALLS)**
- LOT A = 31 STALLS
 - LOT B = 18 STALLS
 - LOT C = 40 STALLS
 - LOT D = 78 STALLS
 - LOT E = 41 STALLS
 - LOT H = 47 STALLS (TEMPORARY)

- PUBLIC PARKING (49 STALLS)**
- LOT B = 4 ACCESSIBLE
 - LOT E = 1 ACCESSIBLE
 - LOT F = 39 STANDARD
 - LOT F = 2 ACCESSIBLE
 - LOT F = 2 ELECTRIC VEHICLE

- COUNTY VEHICLES (71 STALLS)**
- LOT B = 31 STALLS
 - LOT G = 40 STALLS (GRAVEL LOT)

Parking Facilities For Wailuku Civic Center

Approximate Scale 1" = 20'

- Blue Curbing = Public Parking
- Yellow Curbing = Intermittent - For County Vehicles Parking Only
- Green Curbing = Employee Parking based on wall list

Original Map January 13, 1977
 Revised December 1, 1995
 Revised February 12, 2003
 Revised May 2011
 Revised April 2012
 Revised June 2012
 Revised June 3, 2013

Map Based on Public Works Map of January 13, 1977 and revised at various times over the years. This version redrawn using ArcGIS software in 2012 using original map, satellite imagery and on site information. Developed by the County of Maui, Department of Management, GIS Division

Aerial View of Project area. Blue X represents real property to be disposed of.



Two-Story house fronting Kahou Street to remain



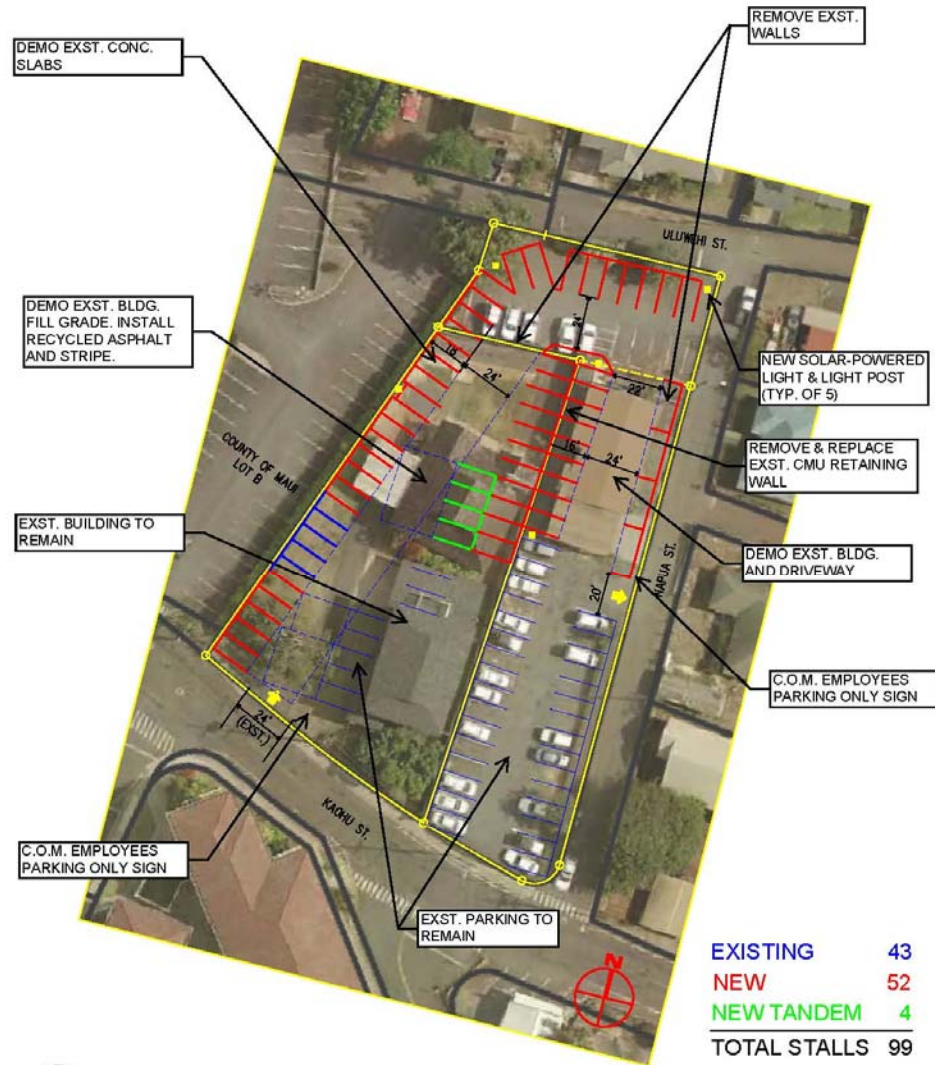


- **One-Story house behind two-story house to be demolished.**
- **Resolution would allow bid process for contractors to salvage windows and doors from the back structure prior to demolition.**



- One-Story yellow house to be removed.
- Resolution permits bidders to move home or the Department to demolish.





B
R1 MIYAHIRA PARKING (12-22-19)

