

# Lahaina Wildfire Debris Transfer

June 4, 2025

Council Committee on Water and Infrastructure

**MAUI RECOVERS**

# LAHAINA WILDFIRE DEBRIS TRANSFER

## Frequently Asked Questions



### Q How long will the debris transfer process take?

A It will begin in June 2025 and is expected to take approximately five months.

### Q How will the debris be transported to the Permanent Disposal Site (PDS)? What is the route?

A The nonhazardous debris will be transported via dump trucks from the Temporary Debris Storage site (TDS) at Olowalu to the Permanent Disposal Site (PDS) in Central Maui using the most direct routes. On the primary route, trucks will travel a 19-mile route from Olowalu to Central Maui using Honoapiʻilani Highway (HI-30), Kūihelani Highway (HI-380), and former cane haul roads beginning from Waikō Road. Two alternate routes have also been identified for use in case of unplanned road closures.

### Q Will the debris transfer impact traffic?

A Based on engineering analysis by the U.S. Army Corps of Engineers, impacts to traffic will be marginal, but USACE is working with their partners to mitigate them. The existing temporary traffic signal at Olowalu will be utilized to allow trucks exiting the TDS to turn left safely onto Honoapiʻilani Highway. Drivers should plan additional time into their drive time to accommodate any delays.

### Q What does the process look like?

### Q Are burned cars being removed as part of the program?

A No. There were no cars stored at the TDS, because burned vehicles had already been recycled as scrap metal following an adjudication process coordinated by the County of Maui's Department of Environmental Management.

### Q Do you plan on using Hawai'i-owned contractors to do the work?

A USACE recognizes the importance of supporting the local contracting community and the economy. USACE's prime contractor is the Environmental Chemical Corporation (ECC). A significant portion of their subcontractors and workforce will be local hires.

### Q What will happen if there is a truck breakdown or a tire goes flat?

A The contractor has strike teams on standby to provide quick support to vehicles to minimize impacts to traffic.

### Q What if debris falls out of a truck? What protection measures are in place to prevent this from occurring?

A The nonhazardous debris will be wrapped in thick, industrial-strength plastic sheeting and lightly wetted prior to being placed in a truck at the TDS to prevent fallout during transport. If a member of the public sees something

# Frequently Asked Questions



# Transport of debris from temporary to permanent site

---

Transporting 400,000 tons of debris from temporary storage site to permanent site selected with community input.

- *When are transport operations expected to begin?*
- *How was the five-month timeframe determined?*
- *What are the potential traffic impacts?*
- *Why can't the debris be transported at night?*

The background of the image is a solid dark teal color. Overlaid on this background is a faint, stylized pattern of leaves and branches in a slightly lighter shade of teal. The leaves are elongated and pointed, arranged in a way that suggests a plant or tree structure. The text is centered horizontally and vertically over the image.

# **U.S. Army Corps of Engineers**





# TDS TO PDS

Temporary Debris Storage Site  
to Permanent Disposal Site  
Maui Wildfire Debris Transfer



U.S. ARMY



US Army Corps  
of Engineers







# Debris Transfer Highlights

## Purpose

- Approximately 400,000 tons of debris will be moved to a regulated site at the Central Maui Landfill designed for safe, permanent containment.

## Timeline

- Debris transport will take approximately five months, from June – November 2025. Up to 50 trucks will make four round trips daily, operating seven days a week during daylight hours.

## Safety Measures

- Environmental monitoring will continue to be conducted throughout operations.
- Debris at the TDS will be lightly wetted for dust control before being loaded into trucks and wrapped in industrial plastic sheeting prior to movement to the PDS.
- Our contractor will have strike teams available to provide quick support and respond to incidents.



U.S. ARMY



US Army Corps  
of Engineers®







# Debris Transfer Phasing



## Protect

- TDS is securely covered until the permanent site is complete and ready.
- Ensure safety of the TDS by continuing environmental monitoring of the groundwater and site.
- Maintain leachate basin to guard against runoff during heavy rain events.



## Move

- Lahaina's fire debris will be lightly wetted for dust control and wrapped in industrial plastic sheeting, in trucks.
- Trucks will use Cane Haul roads in Central Maui to minimize traffic and ensure safe movement using traffic controls. Alternate routes may be utilized when necessary.
- Dust and air monitoring will be conducted to ensure worker and public safety



## Restore

- TDS Roadway Improvements to remain, all other Infrastructure (monitoring wells and leachate pond) will be removed. The site will be graded to mitigate stormwater runoff.
- TDS will be restored in accordance with permitted use agreement.
- The Lahaina fire debris to be permanently placed at the PDS.
- Soil, air, and groundwater testing shall be conducted to maximize environmental protection and public safety.



U.S. ARMY



US Army Corps  
of Engineers®

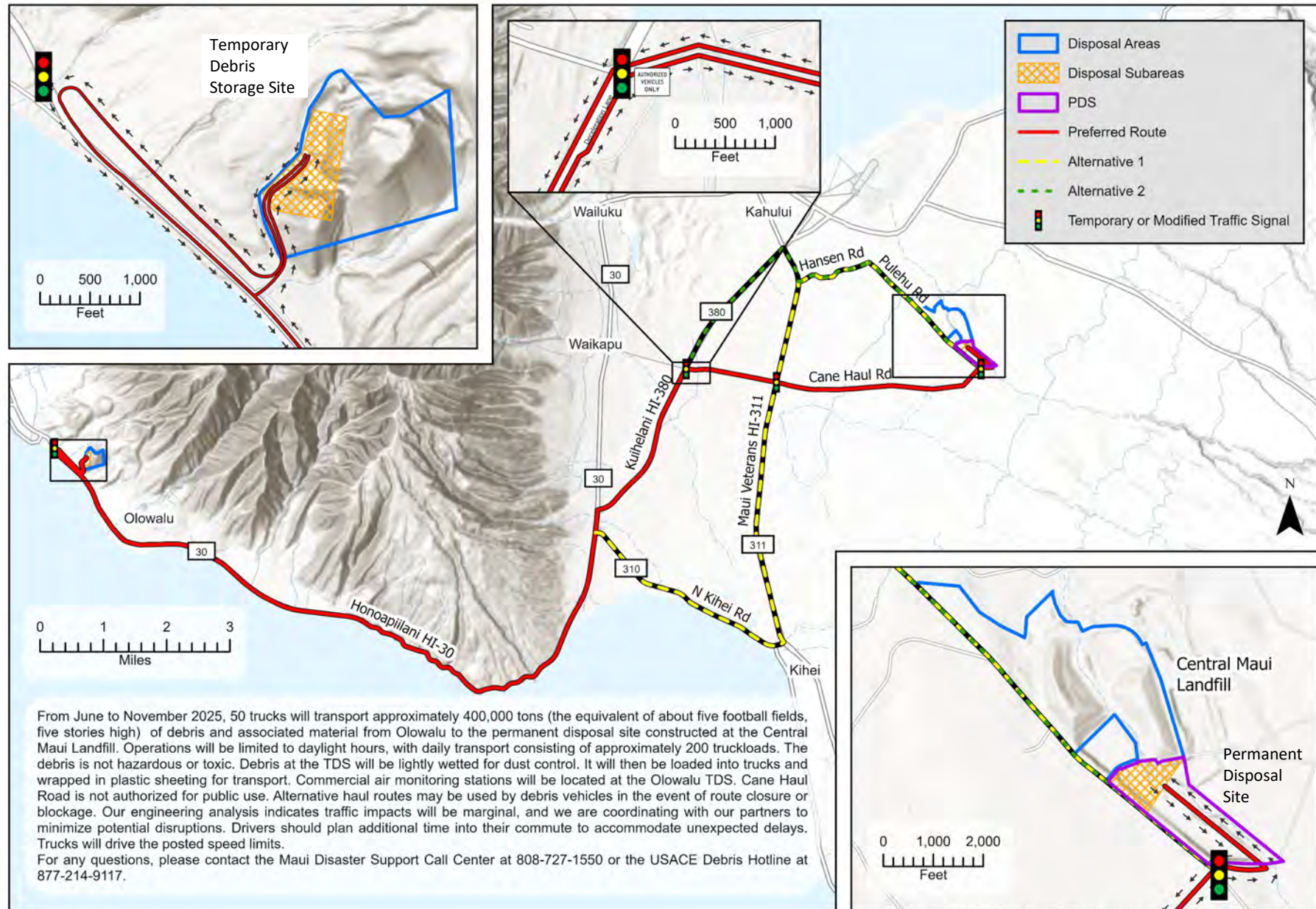






# Lahaina Wildfire Debris Transfer Route

## Island of Maui, Hawai'i



U.S. ARMY



US Army Corps  
of Engineers®



A dark teal background with a subtle, stylized pattern of overlapping leaves and branches in a lighter shade of teal, creating a natural and organic feel.

# State of Hawai'i Department of Health



# ENVIRONMENTAL MONITORING

## Temporary Debris Storage site

All current controls at the Temporary Debris Storage (TDS) site will continue and Quarterly Reports will be available every 90 days while the TDS is operational:

- Dust control and monitoring
- Leachate monitoring
- Stormwater best management practices (BMPs)
- Groundwater monitoring:

All environmental monitoring reports from the opening of the TDS to the present show the findings from sampling and monitoring comply with county, state and federal environmental regulations.

Confirmatory sampling will be conducted and compared against the baseline samples once the TDS is closed and restored to original contours.

## Permanent Disposal Site

- Adherence to environmental requirements as in existing permit, e.g.
- Dust control and monitoring
- Daily cover
- Stormwater BMPs
- Leachate collection
- Operations limitations during inclement weather

## Transfer Haul Route

- Dust control as needed
- Air quality monitoring as appropriate
- Chip seal of currently unpaved portions prior to transfer
- Response plan in event of accident



## Other Monitoring

To learn more about other comprehensive environmental monitoring efforts, visit Department of Health's data portal at

[health.hawaii.gov/environmental-data/](https://health.hawaii.gov/environmental-data/)



## Learn More Today

To learn more about TDS-PDS environmental monitoring visit [mauirecovery.org/debris-containment](https://mauirecovery.org/debris-containment)



# AIR MONITORING

## TDS and PDS

To ensure protection of the community and the effectiveness of best management practices and engineering controls used during material handling, air monitoring will continue during the entire operation of transferring debris from the Temporary Debris Storage (TDS) site in Olowalu to the Permanent Disposal Site (PDS) in Central Maui.

## Air monitoring stations

Air monitoring stations are either 'DustTrak' monitors or 'PurpleAir' sensors, which are operated, maintained, and monitored by either Department of Health or contractors to the County and USACE.

- Five stations are placed at the TDS.
- At least two and up to five monitoring stations are placed at the PDS daily.
- Monitors are placed depending on weather and wind conditions.



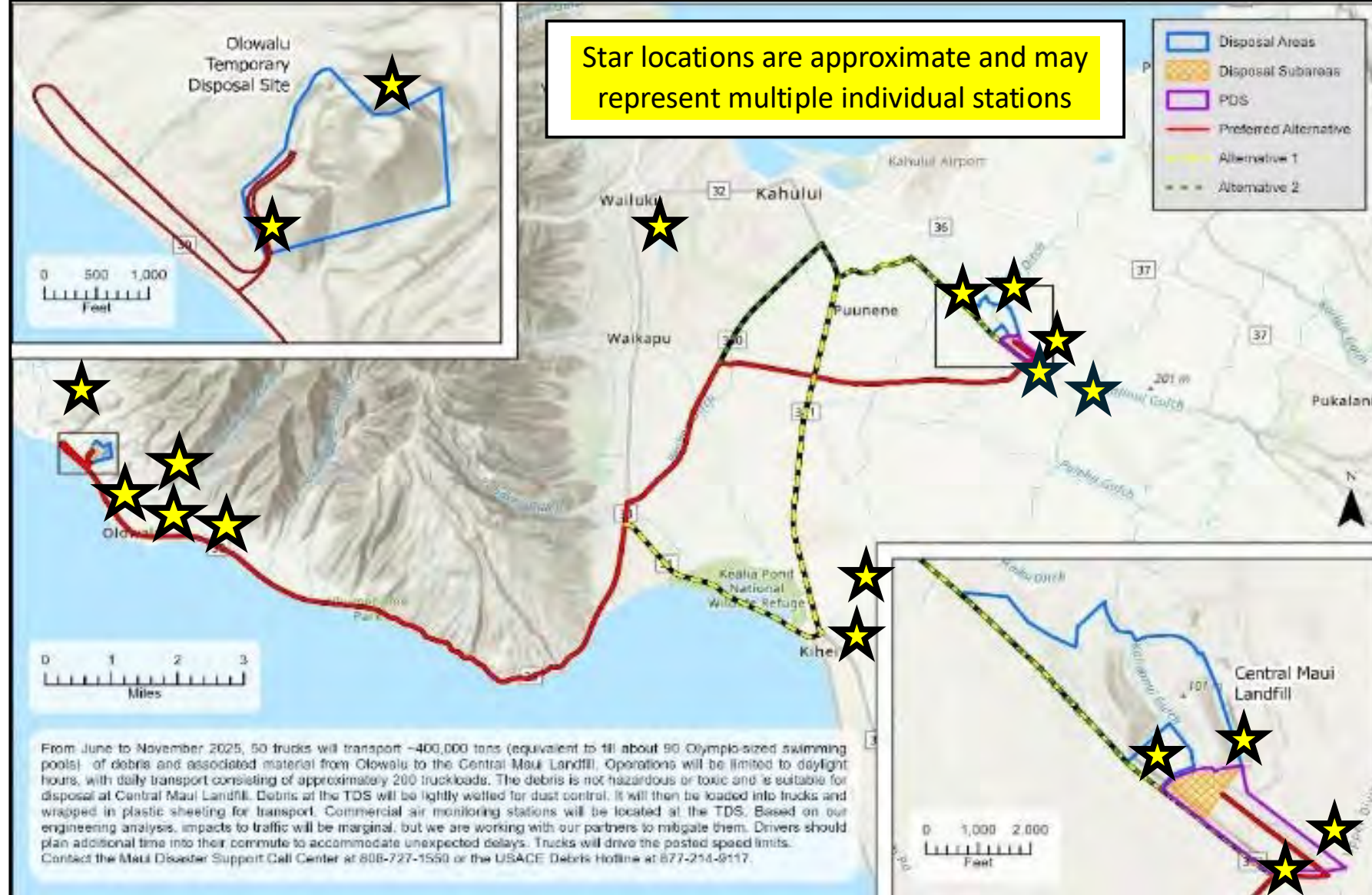
## Dust prevention and control measures

The same dust prevention and control measures successfully utilized during the Lahaina cleanup will continue for the transfer operation.

- Debris will be lightly wetted prior to loading into trucks, where it will be wrapped in plastic sheeting and tarped.
- Water trucks will be utilized to water down access roadways and active loading and unloading areas.
- Response actions such as misting additional water or lowering speed of heavy equipment are taken if elevated dust levels are detected.



# Locations of Air Monitors\*





The background of the slide features a dark teal color with a subtle, stylized pattern of overlapping leaves in a lighter shade of teal. The leaves are elongated and pointed, with visible veins, creating a naturalistic yet modern aesthetic.

# **County of Maui Department of Environmental Management**



# SELECTION PROCESS

## Maui Needs a Permanent Disposal Site

After the 2023 Maui Wildfires the County needed to identify, design, and construct a Permanent Disposal Site (PDS) that met requirements to permanently receive the debris removed from impacted parcels.



## Public Survey Conducted

The County sought community input in a public survey to assist in ranking the criteria of importance.

**More than 2,700 people** over a two-week period from Jan. 31 2024 through Feb. 15 2024 participated in County of Maui surveys on proposed Permanent Disposal Sites (PDS) for Lahaina wildfire debris.

Survey Highlights included: When assessing values, respondents to the surveys ranked criteria in the proximity category

### Most Important

Public and environmental health

### Second Most Important

Consultation with subject-matter experts and input from the community

### Least Important

Logistics, including road safety concerns, timeline, increase in traffic

The results of the surveys, guided county officials in selecting the final site and were presented to community members during the Feb. 21, 2024, Disaster Recovery Community Update Meeting at Lahaina Civic Center.

## DEM Established Criteria to aid in Site Selection

The County Department of Environmental Management (DEM) considered initial public response to priorities in determining the location of the PDS and established criteria to aid in the site selection process.



### Proximity

- Safe distance from natural/environmental features
- Has a buffer zone between the site and residential areas, schools, hospitals, etc.



### Consultation

- Considers recommendations from subject matter experts
- Considers public input
- Considers concerns about cultural resources



### Logistics

- Road safety concerns when trucking debris
- How long it will take to make site ready to receive debris
- Increase in traffic congestion when trucking debris

## Central Maui Landfill Chosen as PDS

The County Department of Environmental Management (DEM) Solid Waste Division utilized its criteria and the input gathered by the community to score its selection matrix. **Central Maui Landfill was selected as the location for the Permanent Disposal Site (PDS) for the Lahaina debris from the August 2023 Wildfires.**

The County of Maui announced in November 2024 that it had entered into conditional agreements with a subsidiary of Nan Inc., Hawaii's largest, locally owned construction company, to purchase approximately 49 acres of previously quarried land and 30 acres of land currently being quarried adjacent to the Central Maui Landfill.

On Dec. 13, 2024, the County of Maui's proposed acquisition of 79 acres for the PDS and Central Maui Landfill expansion was approved by the Maui County Council, which passed bills amending the Fiscal Year 2025 budget for the acquisitions.

DEM is preparing to initiate the design and construction of the PDS.

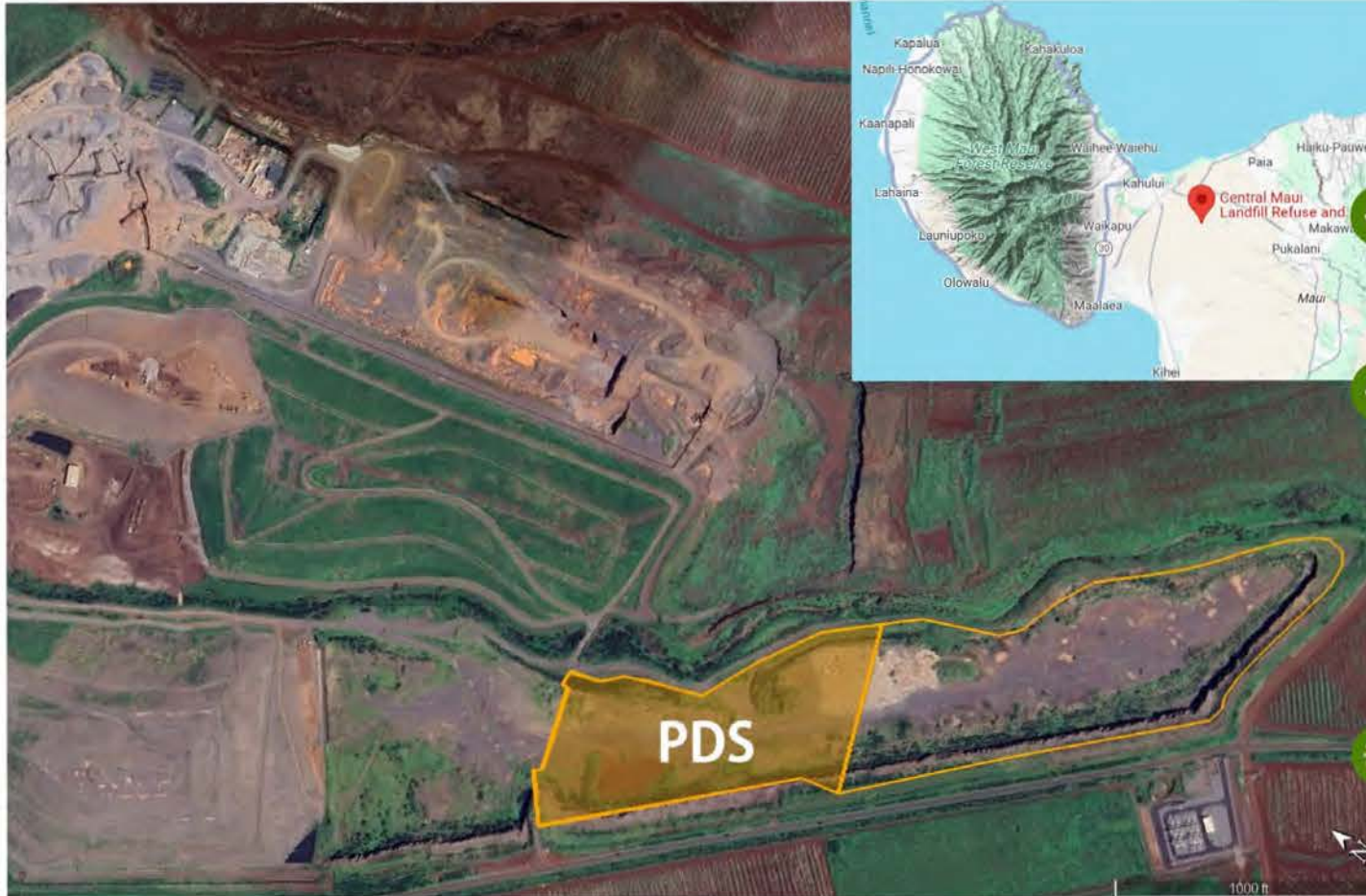


## Next steps for the PDS

To learn more about the final selection, including a comparison of the scoring for the top three sites before and after consideration of the community survey results, use the QR code to view past presentations and survey reports.



# PERMANENT SITE



## Location

Central Maui Landfill was selected as the location for the Permanent Disposal Site (PDS) for the Lahaina debris from the August 2023 Wildfires.

## Acquisition

The County of Maui announced in November 2024 that it had entered into conditional agreements with a subsidiary of Nan Inc., Hawaii's largest, locally owned construction company, to purchase approximately 49 acres of previously quarried land and 30 acres of land currently being quarried adjacent to the Central Maui Landfill.

On Dec. 13, 2024, the County of Maui's proposed acquisition of 79 acres for the PDS and Central Maui Landfill expansion was approved by the Maui County Council, which passed bills amending the Fiscal Year 2025 budget for the acquisitions.

## Construction

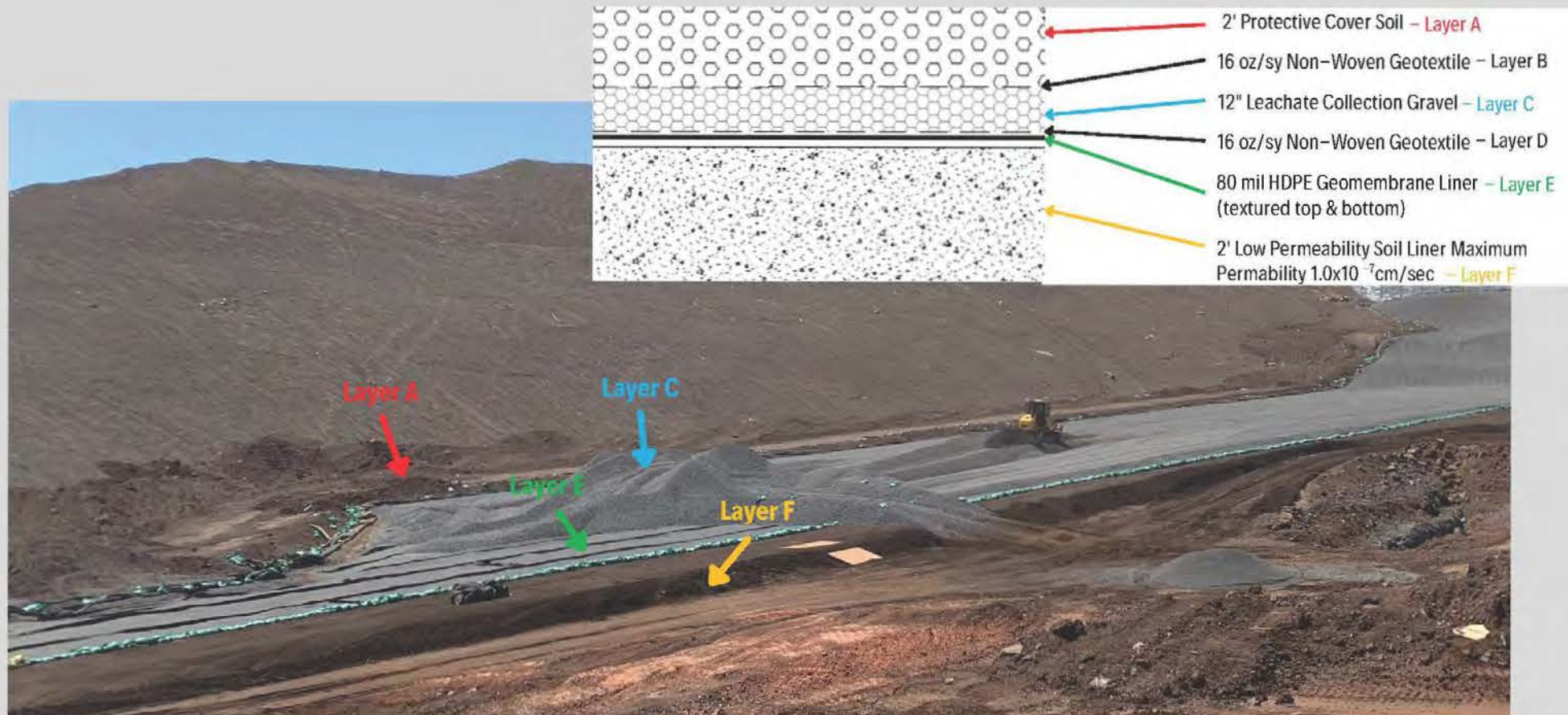
The County Department of Environmental Management Solid Waste Division has prepared the design and is initiating the construction of the PDS in two phases. The PDS is scheduled to begin receiving debris in June 2025. Updates will be communicated to the community.



# PDS DESIGN



PDS protective liner will be built to Resource Conservation and Recovery Act, Subtitle D requirements.





# PDS PROGRESS



BEFORE As of Jan 27, 2025



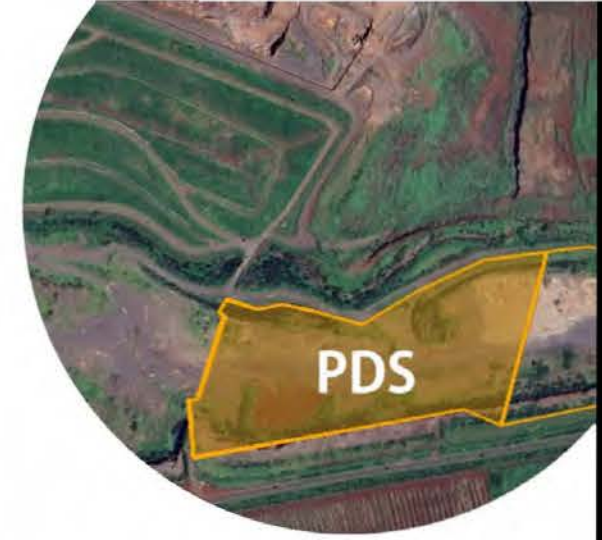
AFTER As of May 23, 2025



BEFORE As of Jan 27, 2025



AFTER As of May 23, 2025



PDS

**The Permanent Disposal Site (PDS) is being constructed in two phases; earth work and liner**



## Earthwork

The Earthwork phase was contracted and work began Jan. 27, 2025. **Earthwork was completed March 23, 2025.**



## Liner

The liner phase was contracted and began on March 24, 2025. **Liner work is expected to be completed June 2025.**



# STAY INFORMED



[www.mauirecovers.org/debristransfer](http://www.mauirecovers.org/debristransfer)

