

EDB Committee

From: Alice L. Lee
Sent: Monday, April 15, 2019 11:46 AM
To: EDB Committee
Subject: FW: MISC Management Strategy for Coqui Frogs
Attachments: MISC's Proposed Maliko Gulch Management Strategy - 2019.pdf

From: Adam Radford <aradford@hawaii.edu>
Sent: Friday, April 12, 2019 8:32 PM
To: Kelly King <Kelly.King@mauicounty.us>; Keani N. Rawlins <Keani.Rawlins@mauicounty.us>; Tasha A. Kama <Tasha.Kama@mauicounty.us>; Riki Hokama <Riki.Hokama@mauicounty.us>; Alice L. Lee <Alice.Lee@mauicounty.us>; Mike J. Molina <Mike.Molina@mauicounty.us>; Tamara A. Paltin <Tamara.Paltin@mauicounty.us>; Shane M. Sinenci <Shane.Sinenci@mauicounty.us>; Yukilei Sugimura <Yukilei.Sugimura@mauicounty.us>
Subject: MISC Management Strategy for Coqui Frogs

Aloha,

Attached is MISC's proposed plan for coqui frog control. Please let me know if you have any questions or I can provide more detail. I'll testify on this as well so we have the opportunity to address questions. I hope you have a good weekend!

All the best,
Adam

--

Adam Radford, Manager
Maui Invasive Species Committee
P.O. Box 983
Makawao, HI 96768
phone: [808-573-6471](tel:808-573-6471)
fax: [808-573-6475](tel:808-573-6475)
web: www.mauisc.org

PROPOSED MANAGEMENT STRATEGY FOR COQUI FROGS
IN MĀLIKO GULCH AND ELSEWHERE ON MAUI - FY20



Maui Invasive Species Committee (MISC)
Pacific Cooperative Studies Unit, University of Hawai'i



I. BACKGROUND

The invasive coqui frog (*Eleutherodactylus coqui*) threatens Maui's economy, quality of life, and environment. First discovered at one location in the late 1990s, the frog has since been detected at nearly all inhabited areas. The purpose of this document is to outline previous control efforts, describe the current status of coqui on Maui, and propose a plan of action for control, with a particular focus on Māliko gulch – on Maui's north shore, Maui's largest infestation.

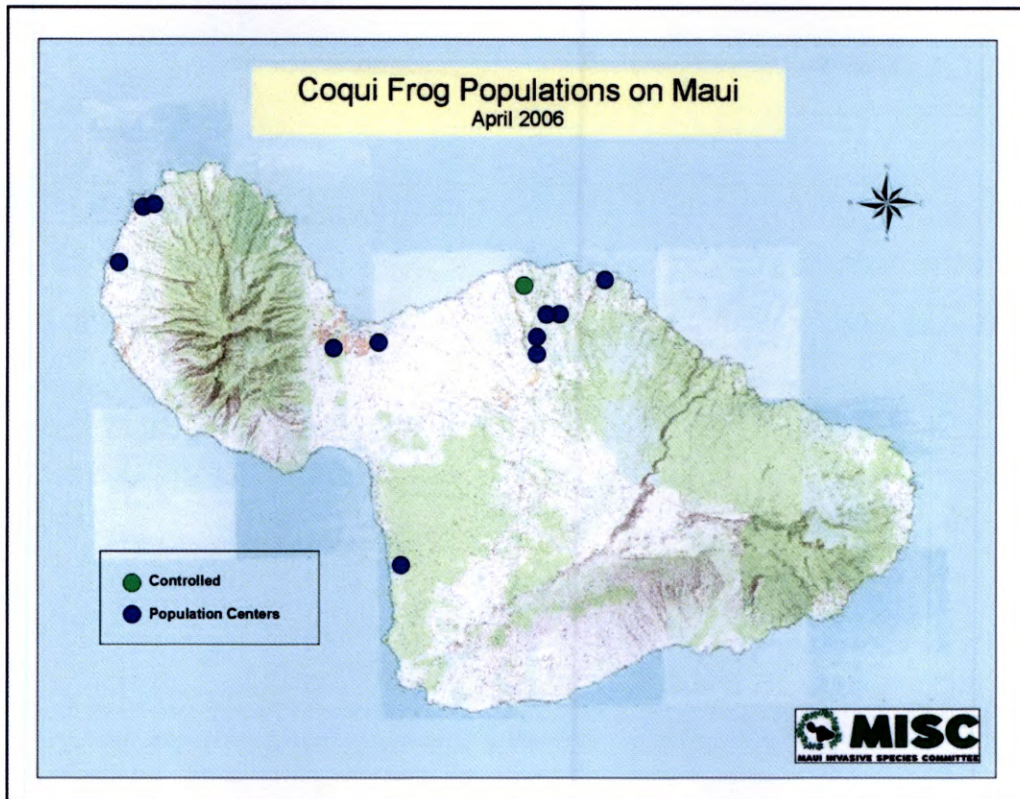
This plan is scalable, Appendix A shows a breakdown of potential costs per year, acres covered, and time needed for eradication. Appendix B shows a breakdown of costs as proposed in the County's FY20 budget and describes some key considerations. It should be noted that eradication of coqui, meaning every last frog is removed from Maui, will be a multi-year project. Even if a major effort was pursued in the coming year(s) it would still take several years to ensure that the frogs were gone. MISC monitors infested areas for at least one year from the date the last calling frog was heard before declaring sites eradicated. Also, new frogs are introduced from off-island so we must stay vigilant.

A. EFFORTS TO CONTROL COQUI ON MAUI

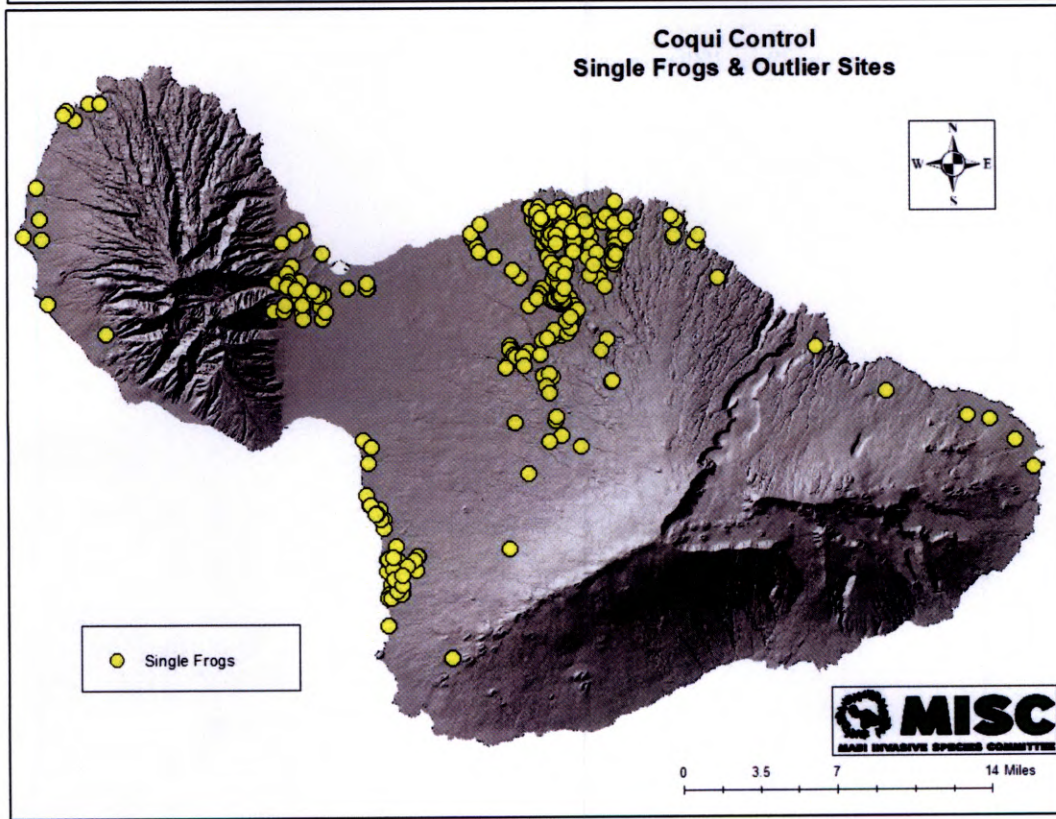
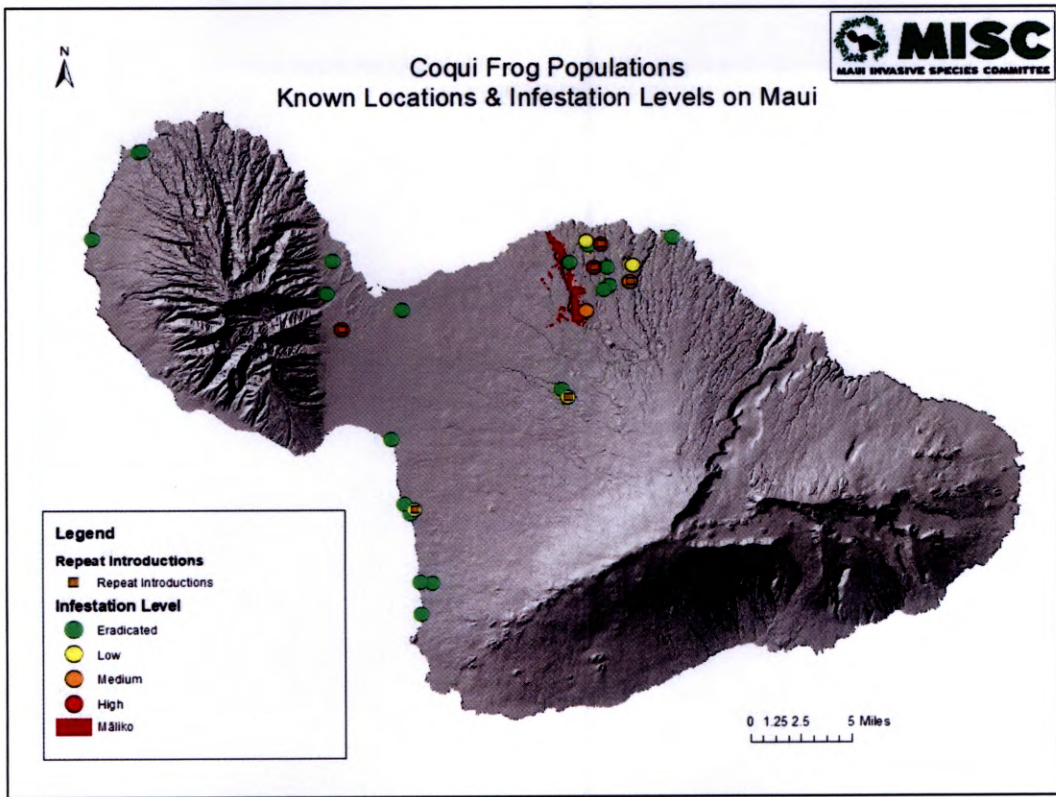
From 2000-2002, MISC responded to reports from the public and hand captured frogs whenever possible. During 2002, MISC assisted with caffeine trials under an experimental permit using caffeine to control coqui. The EPA declined to renew the permit due to concerns about non-target impacts and high toxicity for humans. Citric acid was approved for use on coqui frogs and MISC began control work using it in 2003. Citric was deemed to be a much more benign product.

By 2006, MISC had identified 12 population centers on the island. Only one population had been eradicated (no calling frogs for at least one year). By 2015, 12 populations had been eradicated, including a 13-acre infestation in Honopou, one located at the Ritz Carlton, and another at an East Maui junkyard; however, another seven had become established. During this same time, new introductions from the Big Island continued to increase. The number of hand captures per year reflects this steady increase.

In 2006 MISC was asked what it would take to eradicate coqui from Maui. MISC estimated that it would take \$750K per year for five years with declining costs after that. That level of funding was never achieved, nor did funding keep pace with a growing problem. This plan also proposes a five-year timeframe, however, funding seems to align with need.



By 2019, 29 population centers (five calling frogs or more heard in one location) had been found. Of those, 19 are considered eradicated. Of the remaining ten only a few have active frog populations, mostly due to reintroduction, demonstrating how effective MISC's control efforts have been. MISC staff, in cooperation with the Hawai'i Department of Agriculture (HDOA), and largely due to public reporting, has hand captured frogs throughout Maui, preventing new population centers from occurring. Every report has appropriate follow-up, a major component of the project.



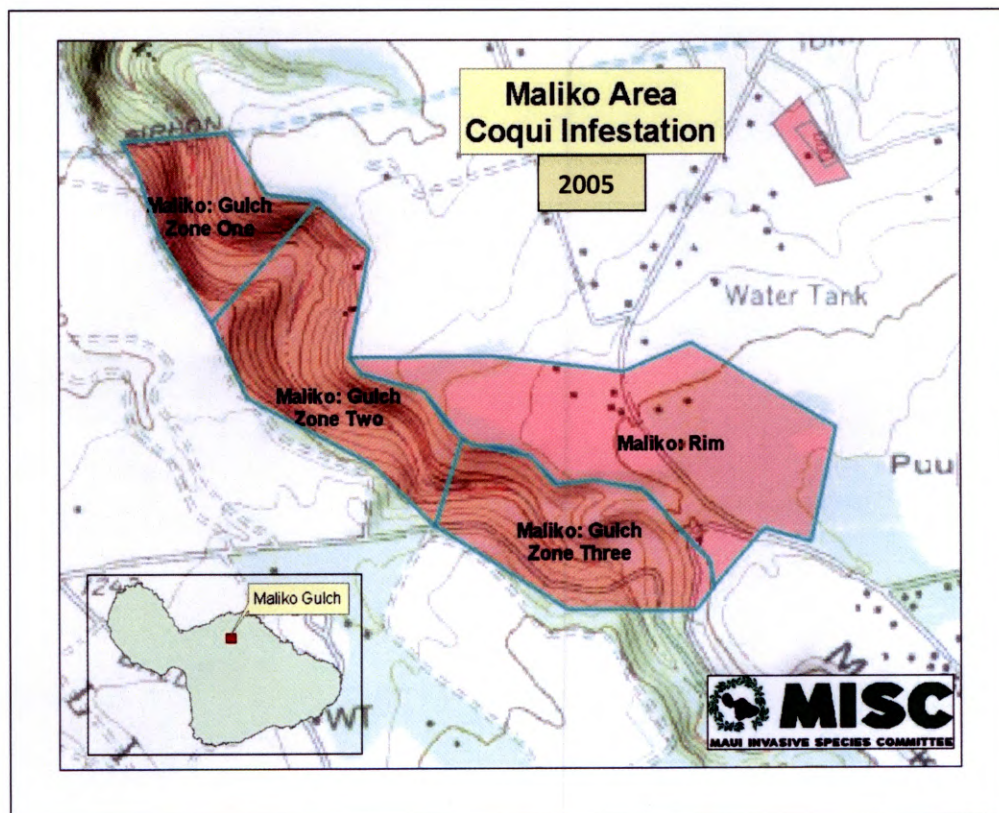
Sites on Maui are either “closed” or “open” populations; the latter are locations with repeat introductions. There are at least six businesses that repeatedly import plant materials infested with coqui frogs from the Big Island. This issue has been raised to elected officials for many years; in the absence of legislation to address it, MISC developed its own coqui-free certification program to encourage businesses to “do the right thing.” Thirty businesses participate in the program; repeat offenders either do not wish to participate or would not qualify.



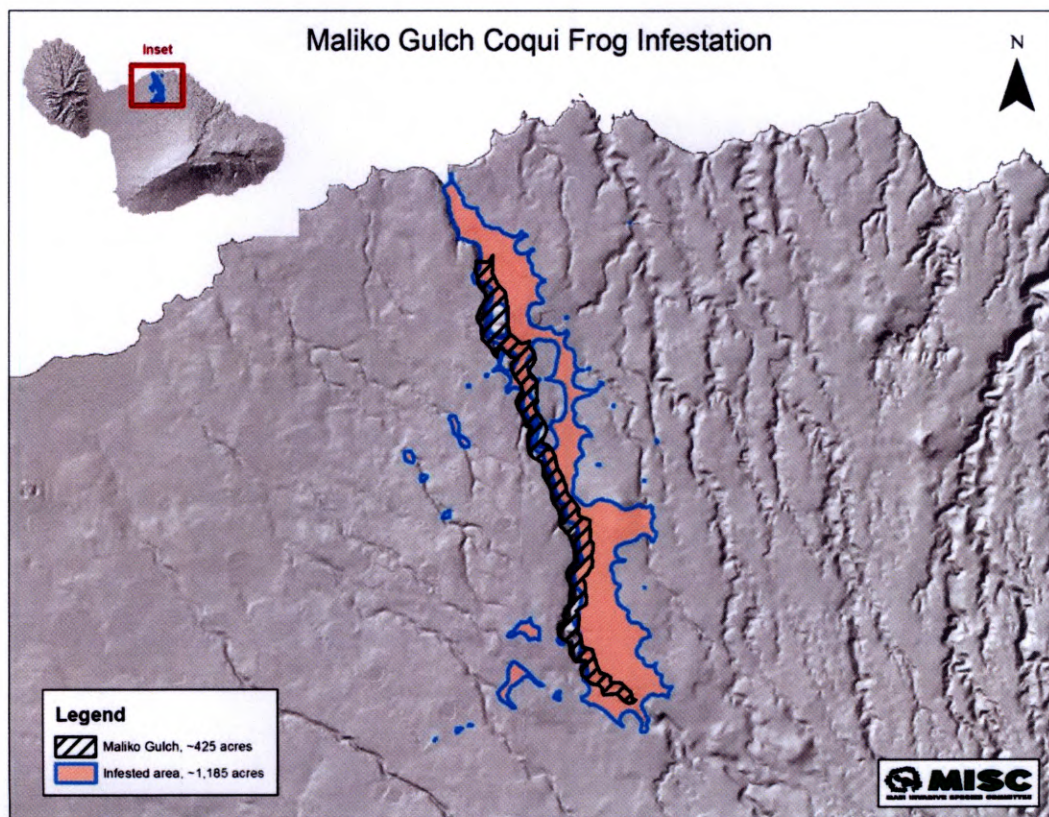
II. CURRENT STATUS OF COQUI IN MĀLIKO

A. POPULATION DISTRIBUTION

In 2005, MISC estimated that the Māliko infestation covered 127 acres. MISC had divided the area into three zones, with the infested portion of what was called “Māliko Rim” limited to the uppermost section of the gulch.



Despite ongoing efforts by MISC to contain the spread of coqui to Māliko gulch, including substantial efforts within the gulch, coqui have spread down the gulch, up the gulch walls, into adjacent residential areas and agricultural lands, and along East Maui Irrigation's (EMI) ditch system. The work area is now estimated to cover up to 1,300 acres and affects more than 500 TMKs in and near Māliko gulch. The infestations appear to be spreading along the EMI ditches and into agricultural lands to the west of the gulch. Heavily infested areas include an estimated 425 acres, other areas need to be accessed for control. "Outbreak" populations occur throughout the ~1,300 acre work area along Māliko and elsewhere and must be controlled to prevent new infestations from establishing.



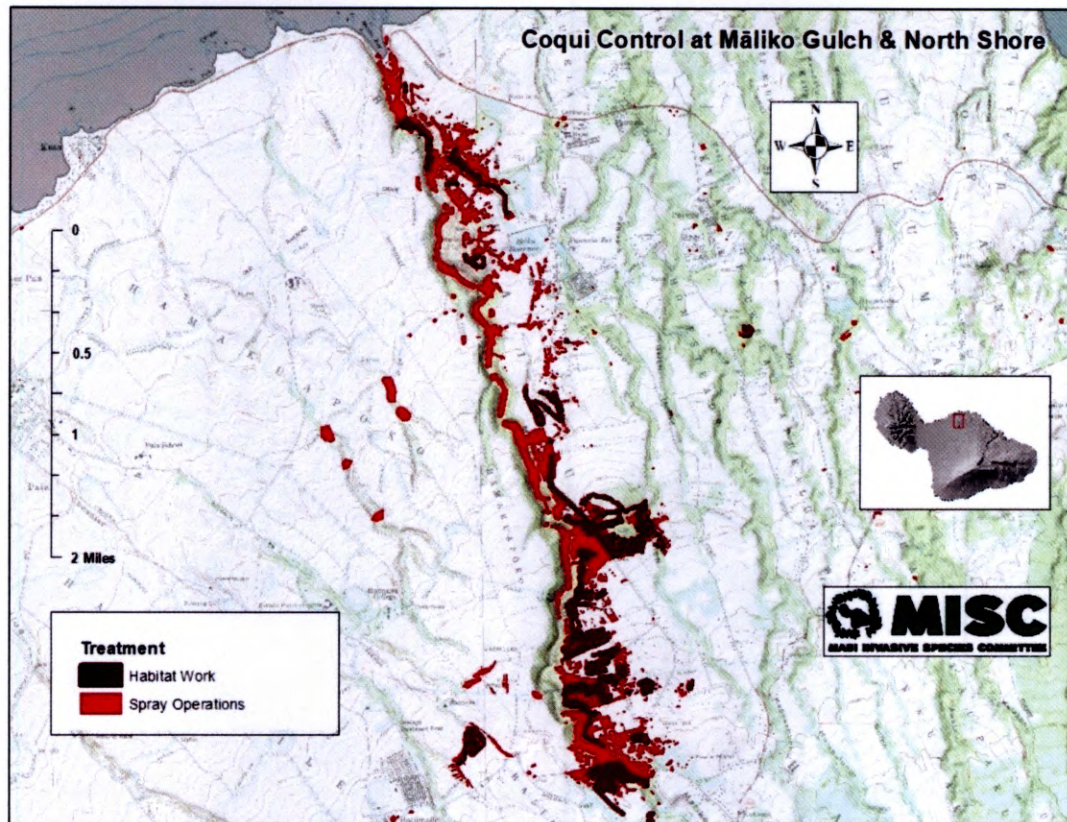
Expansion has occurred for four reasons: the Māliko infestation is extremely challenging from logistical, safety and operational perspectives; weather over the last several years has been very conducive to coqui reproduction (egg clutches of 34 to 75 eggs can be laid four to six times per year), torrential rains move the frogs downstream; coqui have hit a critical population threshold in the gulch, where the population has seemed to increase exponentially "overnight"; and resources to address the Māliko infestation have never been adequate. All aside from coqui showing up from off-island. Maui is at a critical juncture.

B. CHALLENGES & ACCESS CHARACTERISTICS

The Māliko infestation comprises four main habitat types, each with unique challenges:

- a. **Wildland gulch:** characterized by steep heavily-vegetated slopes, including finger gulches, as well as the gulch floor.
 - Subject to periodic flooding including flash floods
 - Falling boulders
 - Irregular terrain
 - Mosquitos
 - Long hikes to access control sites
- b. **Residential rim:** typical sites are two-acre parcels with significant landscaping.
 - Dogs
 - Many properties abut the gulch
 - Not all landowners allow access or control
- c. **Agricultural lands:** either actively managed or fallow, which may also include small infested gulches.
- d. **Agricultural ditches:** flow from Māliko which may be transporting coqui and creating unknown populations to the west of the gulch.
 - Difficult to navigate at night, when frogs would be calling

Work has been ongoing throughout these areas, but with resources to date MISC has barely been able to keep coqui at bay in the Māliko area. Also, frogs have been found at new “outlier sites” throughout Maui.

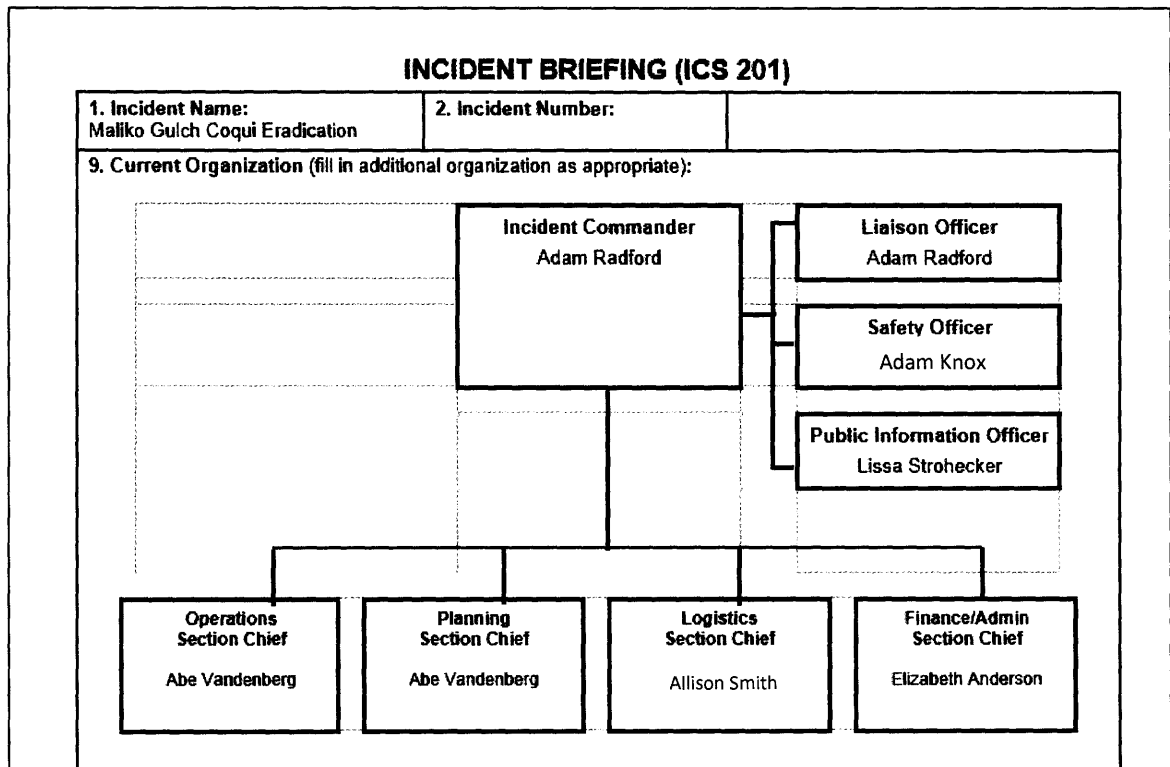


III. OPERATIONAL STRATEGY: MĀLIKO GULCH

The overall approach uses the Incident Command System structure to identify responsibilities and resource needs and allocation. Resources may include MISC staff, other agency staff, county, state or federal equipment, community volunteers, equipment and supplies. The following section outlines the management structure, control operations, planning assumptions, process and evaluation, communications, and community engagement.

A. MANAGEMENT STRUCTURE

Using positions developed under the Incident Command System, MISC will use the following “positions,” which will be filled by existing or additional MISC staff. Key positions for the Māliko Incident Plan include: Incident Commander, Liaison Officer, Public Information Officer, Safety Officer, Operations Chief, Planning Chief, Logistics Chief and Finance Chief. Operational “strike teams” fall under the Operations Chief. The specific duties are outlined in Appendix C.



Ensuring that safety of staff, volunteers and members of the public is paramount in all actions. Through clear protocols, procedures, training, equipment checks and maintenance, incident review and response MISC strives to ensure the safety of all involved in the project.

B. CONTROL OPERATIONS

1. SPRAYING & HAND CAPTURE

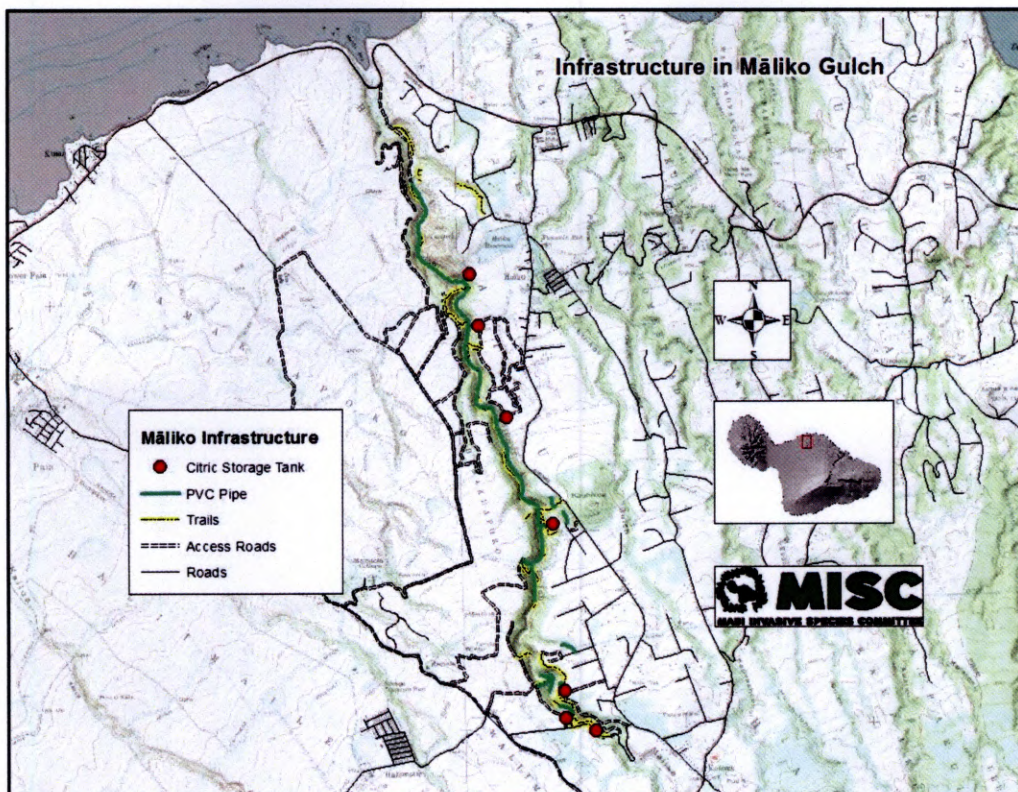
The primary control strategy is to spray coqui with a 12-16 percent citric acid solution. Three systems for spraying citric acid have been developed over the years which have proven to be effective:

- a. Ground operations use trailered tanks, sprayers, and hoses in residential areas.
- b. Large-capacity tanks for mixing and holding citric acid connect to sprayers and/or a gravity-fed system of PVC pipes, valves and hoses located in the bed of the gulch.
- c. High-volume sprinklers attach to fixed stands which have been installed at strategic locations along the edge of the gulch.

Aerial spraying has been used to control areas of the gulch that are not accessible by any other means; this method is less precise and more expensive. Capturing frogs by hand is used on a limited basis and typically for single frog detections at outlier locations.



Much of the infrastructure for work in the gulch was purchased with state (Hawai'i Invasive Species Council) and federal (U.S. Fish & Wildlife Service) funding. Over several years, MISC developed trails, established water storage and mixing stations, obtained access to water from private and county sources, installed a series of high-volume sprinkler stands, laid pipe, and developed cooperative working relationships with local landowners. Some work is needed to refurbish the existing system.

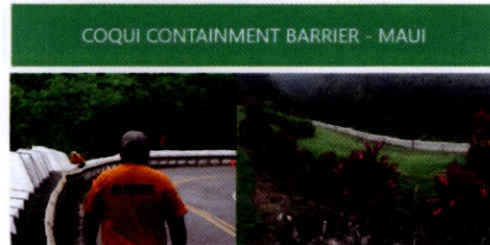


2. HABITAT MODIFICATION

Eliminating coqui-friendly habitat can significantly reduce the amount of required control efforts. MISC conducts extensive habitat removal throughout the residential rim area before treatment to increase efficacy. Techniques include: mowing, weed eating, chainsaw work, chipping, and herbicide treatment of vegetation.

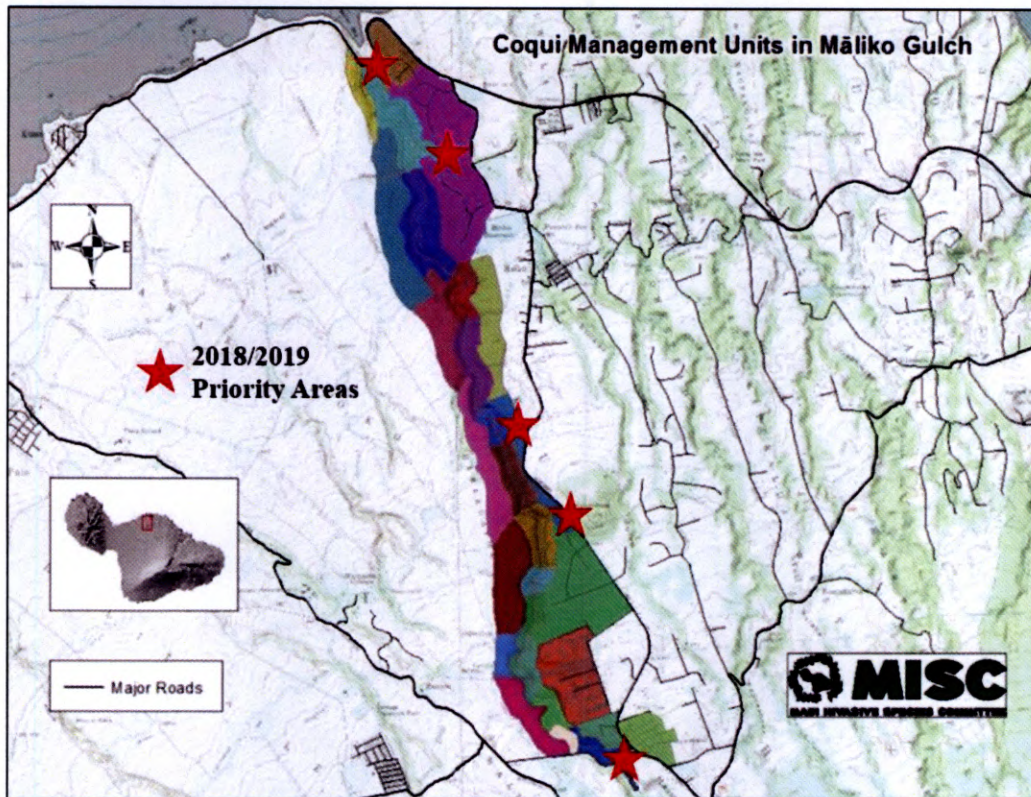
3. BARRIERS

Coqui barriers have been used around the gulch and are planned for future installation. As part of a Department of Land and Natural Resources (DLNR) Capital Improvement Project (CIP) request significant funding for barrier materials and installation may be online this year. The barriers consist of insect mesh that rises about two feet from the ground and then horizontally about another two. Barriers have proven to be an effective deterrent on Hawai'i Island and Maui.



C. MANAGEMENT UNITS

A management unit system helps organize work efforts, track progress and engage the community. Units are based on land use, subdivisions, and terrain considerations. Site-specific plans are also developed with individual landowners and community groups. They are prioritized based on available resource, risk of movement by cars and accidentally by people, proximity to water ways, community effort, etc.



Priorities for FY18/FY19

D. PLANNING & EVALUATION

Effective operations require timely and accurate feedback systems to capture information about effort expended and to evaluate progress toward established goals and objectives. MISC will track data using an integrated GPS and geodatabase system. Information to be tracked includes:

- Coqui-infested acres in Mäliko gulch and along the rim
- Acres treated
- Staff hours worked on project
- Gallons of citric acid applied
- Number of landowners assisting with control
- Number of community events
- Pounds of citric acid distributed to residents
- Volunteer efforts on habitat removal or control

Weekly meetings with key positions covering overall command, logistics, operations, planning, and public information, and finance will ensure that the team is on track with established objectives and schedules. A summary of those meetings will help track progress. Quarterly reports will be provided to all relevant agencies and funders.

MISC has also reaching out to lead State and Federal researchers to ensure that approaches to control are the most appropriate and to help gauge effectiveness of the project. Their findings are integrated into this plan.

E. COMMUNITY OUTREACH & ENGAGEMENT

Community involvement is critical to the eventual success of the coqui eradication project. Effective communication is necessary to keep residents informed and provide opportunities to assist with overall efforts. Regular meetings with resident groups will help ensure ongoing communication and engagement. Residents will be asked to assist with the following activities:

1. **Surveys:** Identify and report locations of coqui frogs, especially in areas where the current distribution is not known or certain.
2. **Habitat modification:** Reduce coqui-friendly habitat on their properties and clear debris and landscape material in advance of scheduled spray operations.
3. **Spray operations:** Conduct spray operations using sprayers and citric acid supplied by MISC or assist with MISC operations.
4. **Storage of supplies:** Store equipment or citric acid on site to reduce transportation time and cost.
5. **Tracking of effort:** Track and report locations sprayed or habitat work conducted.
6. **Community liaison:** Each Management Unit with an active community-based program will have a "Captain" who is responsible for communicating with MISC about schedules, equipment loans, citric acid delivery, etc.



If funding allows, MISC plans to multiply the impact of our community engagement program ten-fold. At that scale, MISC believes coqui can be eradicated from all residential areas and make serious inroads within the gulch itself over a three- to five-year timeframe. The same timeframe MISC believes is needed, given proposed funding for FY20, to work systematically through all infested areas.

F. OUTLIER POPULATIONS & SINGLE FROGS

Single-frog sites are locations where one-to-four coqui are reported. Outliers are places with five or more calling frogs not in the Māliko area. Both are a high priority to ensure new introductions are prevented from becoming established populations, saving vast amounts of time and money. MISC's initial emphasis is to intake and assess report validity, determine the source of the infestation and extent of the problem, and rapidly responding to address the situation as appropriate. Both HDOA and the DLNR assist MISC with response to reports, allowing MISC staff to stay focused on more heavily infested areas. Control methods in those areas are similar to those already described.

Separate teams manage outlier populations, operate as "strike teams," for new outbreaks around Māliko and throughout Maui, remove frog-friendly habitat, and work systematically through management units.

IV. RESOURCE NEEDS

A. PLANNING ASSUMPTIONS

Primary cost factors are labor and citric acid. Additional equipment needs include sprayers and vehicles to move teams. The next phase should include improved storage at the UH-CTAHR facility, where operations are housed. Averages are used for overall estimates; caveats about such averages include uncertainty about the extent of the infestation, variability in terrain, and weather complications.

The proposed work assumes that costs associated with existing coqui crew of five will be covered by other funding. The proposed may be a combination of full-time positions and pulses of temporary workers. Teams of two-to-three will be the normal operational unit and after an initial effort to push back the frogs along major roads, teams will work through the different management units on a weekly basis.

B. COST ESTIMATES

1. **Cost per acre:** \$1,550-2,000 per treatment (citric acid & labor)
2. **Pounds/gallons of citric acid per acre per treatment:** 765 (up to 975)
3. **Acres per person-hour:** 30 (up to 50)
4. **Infested acres:** 1,000 (up to 1,300)
5. **Treatments needed to eradicate coqui:** 10 (up to 30)

Based on these assumptions and variables, the total cost for eradication of coqui frogs from Māliko Gulch varies greatly, and is largely dependent on available funding.

C. GOALS & OBJECTIVES

MISC proposes to focus on the following priority areas.

GOAL 1:	Expand control operations in Māliko gulch.
OBJECTIVE 1:	Reduce infestation levels and stop the current spread, with the eventual goal of eradication.
ACTION STEP 1:	Refine management units to define and prioritize geographically-based operations.
ACTION STEP 2:	Increase staffing capacity and obtain necessary equipment and operational supplies.
ACTION STEP 3:	Implement expanded operational schedule to detect and control coqui frogs using appropriate methods depending on land ownership and terrain considerations.
PERFORMANCE MEASURES:	Coqui-infested acres in Māliko gulch and along the rim; number of acres treated; staff hours focused on Māliko project; gallons of citric acid applied.
GOAL 2:	Increase community involvement in detection and control of coqui frogs.
OBJECTIVE 1:	Landowners assist with habitat removal and coqui control.
ACTION STEP 1:	Using geographically-based community groups, expand outreach efforts to educate local residents and encourage participation.
ACTION STEP 2:	Provide residents with citric acid, equipment, training and follow-up.
PERFORMANCE MEASURES:	Number of landowners assisting with control; number hours contributed to habitat removal or control operations; pounds of citric acid distributed to residents; number of outreach activities.

APPENDIX A: COSTS PER YEAR, ACRES COVERED, AND TIME NEEDED FOR ERADICATION

	Low	High	Funding scenarios and results			Coverable area for 6.5 treatments per year***	
				Acres (low cost) **	Acres (high cost)	Acres (low cost)	Acres (high cost)
Cost per acre (citric acid and labor)*	\$ 1,550	\$ 2,000	\$ 1,000,000	645	500	99	77
Infested acres	1,000	1,300	\$ 2,000,000	1,290	1,000	199	154
			\$ 2,500,000	1,613	1,250	248	192
			\$ 3,000,000	1,935	1,500	298	231
			\$ 4,000,000	2,581	2,000	397	308
			\$ 5,000,000	3,226	2,500	496	385
			\$ 6,000,000	3,871	3,000	596	462
			\$ 7,000,000	4,516	3,500	695	538
			\$ 8,000,000	5,161	4,000	794	615
			\$ 9,000,000	5,806	4,500	893	692
			\$ 10,000,000	6,452	5,000	993	769

*Costs depend on the density of the infestation, terrain, vegetation, access, etc.

**"Acres" are acres with coqui removed or significantly diminished after a complete treatment regime.

***Ideally, treatments occur at each site every eight weeks to break the reproductive cycle of the frogs. This equals 6.5 treatments at each site per year.

Current allocation in the FY20 Maui County Mayor's budget. This allocation fits a five year timeframe for eradication.

APPENDIX B: DRAFT BUDGET AS CURRENTLY PROPOSED FOR FY20

Category	Amount
Personnel	\$735,000
Citric acid	\$883,000
Supplies & Repairs	\$150,000
Equipment	\$340,000
Facility support	\$125,000
Overhead	\$267,000
Total	\$2,500,000

Budget Notes:

Personnel: Add 4 field Crews (3 field staff with 1 crew leader); add support for data management, logistics/repairs, and community engagement. Bringing the crew size to 24 people plus support and community engagement liaisons.

Citric Acid: For use by MISC staff and community teams.

Supplies & Repairs: expanded infrastructure within community areas to reduce wear and tear on moving citric acid; constant repair of spray equipment; fuel; water; cell phones, utilities, safety gear.

Equipment: 4 large spray rigs for use by crews; (10) community loan sprayers, and 4 trucks.

Facility: Storage building for citric acid and equipment.

Community Engagement: Expanded community engagement is absolutely critical to stopping coqui from spreading across the island. With County support, MISC has been working closely with different communities in the Mālika area. These residents are eager to help and simply need the resources and leadership to help turn the tide. We are excited about community involvement to date and grateful that the County sees this work as an imperative.

State Support: We are hopeful the Legislature will approve a \$650,000 CIP request to support installation of coqui barriers along key areas of gulch. These structures will help slow the onslaught of coqui coming up from the gulch. Additional funding has also been earmarked for coqui control on Maui but has yet to be approved.

Facility: Ramping up at the scale necessary requires more infrastructure. The proposed budget includes funding for a structure to store/protect citric acid and equipment. There is one significant caveat to the request for funding. To be efficient, both with time and County resources, MISC needs assurance that it can stay at its current site for the next 5-10 years, on UH-CTAHR land, and allowed to expand to address infrastructure needs of the coqui program.

If ramp-up is more than the proposed \$2.5M then costs will incrementally increase (e.g., if \$5M is allocated than \$300K will be budgeted for Supplies & Repairs).

APPENDIX C: ROLES & RESPONSIBILITIES (INCIDENT COMMAND SYSTEM STRUCTURE)

Incident Commander

- Supervises Command and General Staff
- Briefs staff
- Determines information needs
- Establishes parameters for resource requests and releases
- Establishes planning levels needed
- Approves and authorizes implementation of Incident Action Plan
- Ensures overall coordination of Command and General Staff

Liaison Officer

- Obtains information from cooperating agencies, including contacts, available resources and capabilities
- Participates in coordination of media releases
- Participates in planning meetings
- Monitors operations to identify potential inter-organizational problems

Safety Officer

- Identifies hazardous situations and potentially unsafe acts
- Ensures adequate protective equipment is available and used
- Identifies corrective actions, makes recommendations, and ensures implementation
- Prepares Incident Action Plan Safety & Risk Analysis
- Participates in planning meetings

Public Information Officer

- Establishes contacts with local media representatives as appropriate
- Releases news to media; coordinates information releases
- Coordinates communications with affected communities
- Attends planning meetings

Operations Chief

- Establishes operational period
- Establishes staging areas
- Develops and manages tactical operations to meet incident objectives
- Assesses safety issues
- Determines needs and requests additional resources
- Attends tactics and planning meetings; provides updates

Planning Section Chief

- Meets with Operations Chief and Command staff to discuss proposed strategy
- Maintains resource tracking system
- Maintains / develops incident maps
- Prepares contingency plans & alternative strategies and identifies resources for implementation
- Identifies need for specialized resources
- Conducts planning meetings

Logistics Chief

- Participate in planning meetings and preparation of Incident Action Plan
- Review plan to estimate needs for next operational period
- Research availability of additional resources
- Develop and implement resource orders
- Provide input on resource availability, gaps and timelines
- Identify future operational needs to anticipate logistical requirements
- Coordinate community group efforts

Finance / Administration Chief

- Attend Planning meetings
- Gather relevant financial information
- Determine any cost-share agreements
- Maintain documentation of labor, equipment, services, materials expenditures
- Ensure that personnel records reflect incident activity
- Assist with procurement

Strike Team / Task Force Leader

- Attends Operations briefings
- Reviews assignments with subordinates and assigns tasks
- Coordinates activities with adjacent teams
- Monitors safety

EDB Committee

From: Alice L. Lee
Sent: Monday, April 15, 2019 11:43 AM
To: EDB Committee
Subject: FW: Proposed Property tax increases

From: George Hu <george98034@hotmail.com>
Sent: Sunday, April 14, 2019 11:14 AM
To: Keani N. Rawlins <Keani.Rawlins@mauicounty.us>; Tasha A. Kama <Tasha.Kama@mauicounty.us>; Riki Hokama <Riki.Hokama@mauicounty.us>; Alice L. Lee <Alice.Lee@mauicounty.us>; Mike J. Molina <Mike.Molina@mauicounty.us>; Tamara A. Paltin <Tamara.Paltin@mauicounty.us>; Shane M. Sinenci <Shane.Sinenci@mauicounty.us>; Yukilei Sugimura <Yukilei.Sugimura@mauicounty.us>; Kelly King <Kelly.King@mauicounty.us>
Subject: Proposed Property tax increases

I own two rental properties on Maui and pay 100% of my share of GET, TAT, property taxes, and state taxes. I read that Maui County is proposing to raise short-term rental property taxes by 50%. We are annually assaulted by both the state, and now the county, with increased taxes that make it increasingly hard to run a business. While the county & state may be eyeing our gross revenues, we pay the majority of that money right back to the state and county in the form of either direct taxes, dues, management or cleaning fees to our on-island agent, or repairs & maintenance to local companies.

I'm not clear if this tax would only apply to homeowners of short term rentals or would also apply to hotels & condos. It certainly needs to be applied to all categories of housing for the tourists or it would be unfair.

If your goal is to make HI and Maui County the least business friendly place in the US then you are heading in the right direction. If you're trying to push out the tourism industry that employs more people than any other career in HI outside of government employment collecting taxes, then you're on the right track. If you're trying to drive down your tax revenues by pushing out reasonably priced accommodations for tourists, then you're on the right track. If you're trying to make it unsustainable to pay your own salaries, then you're on the right track.

I sincerely hope the county comes to its senses and recognizes what it's cash cow is, and that making that cow suffer is not the road to success.

Sent from Mail for Windows 10

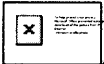
EDB Committee

From: Nani Kahinu (via Google Docs) <naike.ltd@gmail.com>
Sent: Monday, April 15, 2019 11:29 AM
To: EDB Committee
Cc: info@madeinmauicountyfestival.com
Subject: Made in Maui
Attachments: Made in Maui .pdf

naike.ltd@gmail.com has attached the following document:



Made in Maui



Aloha,

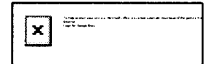
Attached is my letter of support for Made in Maui County Festival

Mahalo,

Google Docs: Create and edit documents online.

Google LLC, 1600 Amphitheatre Parkway, Mountain View, CA 94043, USA

You have received this email because someone shared a document with you from Google Docs.



April 15, 2019

Letter of support for: Made in Maui County Festival
Aloha kakou,

I am writing this letter in support of Made in Maui County Festival, this festival has really opened another avenue for Na'ike LLC. Not only has the Festival benefited us, the workshops held on Molokai or video availability held at Kuha'o Business Center, give us the opportunity to receive hands on education we would not have access to. . We have been using their services for the last three years really know that it is because of this priceless resource of information we are still in business and continuing to grow.

The stipend that is offered to Molokai to help offset transportation costs have helped defer a small part of our immense travel costs. Our freight costs, airline tickets, car rental, hotel stay is such a huge part of our expense to attend Made in Maui, the \$500 stipend helps soften the blow. We would like to see this stipend continue along with finding a more affordable mode of shipping since each vendor is responsible for getting their goods to Maui and back. In 2018, we were grateful to have a discounted container which five vendors shared to bring their staging and inventory back to Molokai. Fortunately I was on Maui an extra day and was able to store and transport all their inventory and staging equipment to Young Brothers. Having a shared costs like this helped immensely.

I humbly ask to keep this opportunity of economic growth available for Molokai entrepreneurs to create a more stable economy for all who live on Molokai.

Mahalo!

A handwritten signature in black ink, appearing to read 'Kahinu' with a stylized flourish.

Jamesie "Nani" Kahinu
PO Box 650 Kaunakakai, HI 96748
808-336-0387

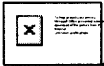
EDB Committee

From: Nani Kahinu (via Google Docs) <naike.ltd@gmail.com>
Sent: Monday, April 15, 2019 11:25 AM
To: EDB Committee
Cc: info@mauifoodtechnology.org
Subject: Maui Food Technology
Attachments: Maui Food Technology .pdf

naike.ltd@gmail.com has attached the following document:



Maui Food Technology



Aloha,

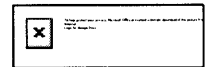
Attached is my letter of support for Maui Food Technology.

Mahalo

Google Docs: Create and edit documents online.

Google LLC, 1600 Amphitheatre Parkway, Mountain View, CA 94043, USA

You have received this email because someone shared a document with you from Google Docs.



April 15, 2019

Letter of support for: Maui Food Technology

Aloha kakou,

I am writing this letter in support of Maui Food Technology Center as they have helped us by providing a resource of information valuable to Molokai residents and our small business Na'ike. We have numerous entrepreneurs who are working part time to full time jobs and would like to create value added products but need the help with figuring out how to make it to retail market. Maui Food Technology Center helped up with our start up Chili Pepper Shoyu blend we make on Molokai by verifying it for suitability for the retail market. Without their availability to continue to do outreach on Molokai, we will not have the educational information resources so many others are able easily able to access on other islands.

I humbly ask to keep this valuable resource of information accessible for Molokai and continued availability to outer islands as we try to create more local value added goods to Hawaii's retail market.

Mahalo!

A handwritten signature in black ink, appearing to read "Kahinu". The signature is fluid and cursive, with a large initial letter.

Jamesie "Nani" Kahinu
PO Box 650 Kaunakakai, HI 96748
808-336-0387

EDB Committee

From: County Clerk
Sent: Monday, April 15, 2019 10:41 AM
To: EDB Committee
Subject: FW: April 17 Committee Meeting Testimony
Attachments: Maui Humane Society Testimony.pdf

From: Jennifer Valois <jvalois@mauihumanesociety.org>
Sent: Monday, April 15, 2019 10:26 AM
To: County Clerk <County.Clerk@mauicounty.us>
Subject: April 17 Committee Meeting Testimony

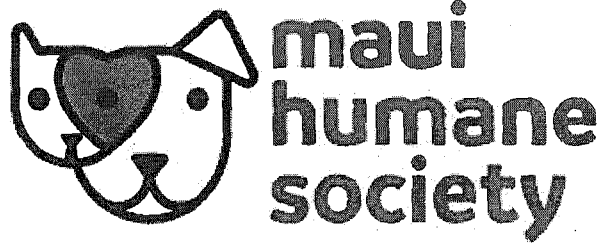
Aloha,

Kindly find attached Jerleen Bryant's written testimony on behalf of Maui Humane Society for the April 17th Committee Meeting. Please let me know if I can provide any other information or answer any questions.

Best regards,

Jenn Valois
Executive Assistant
Maui Humane Society
PO Box 1047
Puunene, HI 96784
(808) 877-3680 ext. 215
jvalois@mauihumanesociety.org
mauihumanesociety.org





Jerleen Bryant
Maui Humane Society
PO Box 1047
Pu'unene, HI 96784
(808) 877-3680 ext. 215
jbryant@mauihumanesociety.org

April 11, 2019

Aloha Budget Chair Rawlins-Fernandez and Finance Committee Members:

My name is Jerleen Bryant, and I am the CEO at the Maui Humane Society. Unfortunately, I am currently off island attending a national Animal Welfare Conference and therefore unable to give my testimonial in person.

The Maui Humane Society is an exceptional organization with the highest animal save rate in the state, and our community can be proud of the work we do. In addition to the many ways we help our Maui ohana, we perform these services as part of the Animal Management Program for Maui County. We are in our 30th year of partnering with Maui County to provide these mandated services. For the vast majority of this time, these services have not been fully funded thereby forcing MHS to supplement the county's responsibility with revenue from private donations. Bridging the county's funding gap in this way is not what our donors intended for their generosity, and we are very thankful to see that this could be the year where the funding gap dramatically decreases. Approving the increase to the Animal Management Program in the Mayor's FY20 Proposed Budget will finally close this gap by two-thirds!

Additionally, in the Mayor's Proposed Budget, funding for one new Humane Enforcement vehicle was approved instead of the two originally requested. The total cost for both trucks is \$120,000. With six very old trucks to replace, two new trucks in FY20 would make a significant difference for our enforcement department and will allow our officers to work more safely and efficiently. These funds are requested from the Animal Management Revolving Fund which currently has an adequate balance to support the purchase of both trucks.

To further our efforts in decreasing the overpopulation of animals on Maui our organization offers high quality spay and neuter services to the public at low or no cost. The Spay & Neuter Grant would allow us to continue offering this critically needed service to the community.

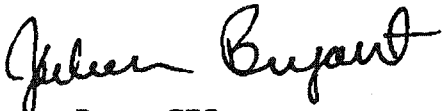
In summary, I respectfully urge this committee to approve:

A. Increase of \$608,907 to the Animal Management Program as already included in the Mayor's FY20 Proposed Budget

B. Approve \$120,000 for the purchase of two new Humane Enforcement trucks from the Animal Management Revolving Fund

C. Approve the \$100,000 Spay & Neuter Grant as included in the Mayor's FY20 Proposed Budget to be awarded to the Maui Humane Society.

Respectfully submitted by,



Jerleen Bryant, CEO
Maui Humane Society



Pictured above is the new Humane Enforcement vehicle purchased in FY19. Two additional trucks are requested in FY20

EDB Committee

From: Sweet Pe*a <sweetpeamaui@gmail.com>
Sent: Monday, April 15, 2019 2:51 PM
To: EDB Committee
Subject: EDB-1: in support of Maui Nui Botanical Gardens

April 15, 2019
Budget and Finance Committee, Maui County Council
Budget Chairwoman, Keani N.W. Rawlins-Fernandez
200 South High St., 8 th Floor
Wailuku, HI 96793

Honorable Members of the Council:

I am writing to urge you to support Mayor Victorino's FY2020 budget request for Maui Nui Botanical Gardens.

The Maui Nui Botanical Gardens (MNBG) hosts community events and workshops that are essential to encouraging community members and visitors to honor, preserve and invest in Native Hawaiian culture, environment and plants that perpetuate the health and wellbeing of our people. I do not know of any other institution fulfilling this mission so effectively and MNBG is a landmark that is essential to the quality of our island home.

Additionally, MNBG is the best place on Maui for visitors and residents to learn the cultural history of Maui County's unique plants. MNBG provides a place for students of botany and Hawaiian culture to learn plant identification and experiment with traditional uses. They host more than 1,500 Maui students each year in educational activities that teach native Hawaiian plants and their uses. This organization has consistently more than doubled the funding provided by the County.

I hope you will receive many testimonies to vouch for MNBG, but if not, please know that this organization serves a wide spectrum and significant number of residents who may not be aware that providing testimony supports the livelihood of this organization. Our community would not be as cultured and infused with vitality without the funding provided to MNBG.

Sincerely,
Lehua Simon
Pukalani resident
seeker of agricultural solutions from 2017-2018
through the mālamalama maui project

EDB Committee

From: Sweet Pe*a <sweetpeamaui@gmail.com>
Sent: Monday, April 15, 2019 2:39 PM
To: EDB Committee
Subject: Testimony to support local agricultural solution in 2019-2020 budget

Dear Councilmembers,

I am submitting testimony to ask you to provide funding in the amount of \$25,000 to the Maui based 501c3 Common Ground Collective. This is a non-profit that was started by Maui residents to help increase food security and economic benefits in Maui County. This organizations works hard to provide education and outreach to community members, they work with the American Heart Association to provide locally grown produce for the Kids Cook with Heart program ensuring that the produce is purchased from our local farmers to support local agriculture.

This organization also spotlights and promotes local businesses that used locally sourced produce for their products and helps connect them with local farmers if they need local produce. On top of this they are also collecting data to increase local connections between farmers and the market as well as inspiring landowners to convert their properties to small passive farms and most recently have become involved in supporting the Maui Food Bank's Give Healthy Challenge to promote healthy donations to the Maui food bank for their recipients and will be launching their Foster Farming upcountry gleaning program very soon.

All of these services are incredibly beneficial to the Maui community as we improve our agricultural systems and prepare for an economically viable future. They have done the majority of this work with very little donations and funding, and with support from the County, they can build foundation and expand their efforts. This organization is providing much needed assistance to our community at this time and create a thriving local ag system with an innovative solution.

I ask that you please support Common Ground Collective and provide them with \$25,000 for their program costs.

Mahalo,
Lehua Simon
Pukalani resident
seeker of agricultural solutions from 2017-2018
through the mālamalama maui project

EDB Committee

From: Melanie Padgett <mauiecrc@gmail.com>
Sent: Monday, April 15, 2019 12:33 PM
To: EDB Committee
Subject: Fwd: Testimonial letter of support for Maui County Subsidy's early childhood program

Forwarding testimony in support of Early Childhood Programs- Maui County Child Care Subsidy Line Item

Melanie Padgett
Project Specialist
Maui County Early Childhood Resource Center 251 Napua St. Wailuku, HI 96793
Phone: 242-1608
FAX: 270-5556
Mailing Address: MCECRC/MFSS 1844 Wili Pa Loop Wailuku HI 96793

----- Forwarded message -----

From: Jody Ribao <ribaojody@icloud.com>
Date: Mon, Apr 15, 2019 at 12:07 PM
Subject: Testimonial letter of support for Maui County Subsidy's early childhood program
To: <yukilei.sugimura@mauicounty.us>, <tasha.kama@mauicounty.us>, <keani.rawlins@mauicounty.us>, <shane.sinenci@mauicounty.us>, <tamara.paltin@mauicounty.us>, <kelly.king@mauicounty.us>, <riki.hokama@mauicounty.us>, <alice.lee@mauicounty.us>, <mike.molina@mauicounty.us>
Cc: <mauiecrc@gmail.com>, <ribaojody@yahoo.com>

Aloha, my name is Jody K. Ribao. I am writing this letter of support for the Maui County Subsidy Child care program. I am a current recipient of the program and am extremely grateful to have been given the financial aid to help in sending my 4 year old son to preschool. I wanted to take a moment to genuinely thank the Maui Council members in providing this aid of Early Childhood education programs to qualify working parents. I hope that the program can be continued for next year because it especially helps single mothers like myself to be able to provide early childhood education for my children.

As a single mother of two the program has provided financial assistance to be able to send my children to school. I was born and raised in Maui and work full time as a flight attendant for Hawaiian Airlines, yet with the high cost of living and high quality education cost it becomes challenging to make financial ends meet. My daughter is 12 years old and attends Kamehameha Schools Maui campus in which she receives assistance from the schools financial programs. However, my son is 4 years old and is not of Hawaiian decent so programs like the County of Maui early child care subsidy program helps to send him to high quality education programs like the Wailuku Union preschool in which he attends. Without such aid I would never be able support my sons education. His father is an absent parent who lives on Oahu and does not provide any financial or moral support. Because of my sons situation it necessary for him to be involved in early childhood programs to enable positive physical and emotional growth, support, social interaction and early educational skills needed for success in his future. My daughter attended the same preschool and also received aid from such programs. Today she is a successful honors student and is thriving at KSBE Maui.

I truly support the County of Maui early childhood programs for aid to our keikis and sincerely hope that these programs will be continued next year as it has proven in our lives to be of great assistance and success.

Mahalo nui loa for your time and understanding.

Sincerely,

Jody K. Ribao

Sent from my iPhone

EDB Committee

From: Lemmo, Sam J <sam.j.lemmo@hawaii.gov>
Sent: Monday, April 15, 2019 2:04 PM
To: EDB Committee
Subject: Letter of support
Attachments: DOC405.PDF

Dear Chair Rawlins-Fernandez, I hereby submit this letter of support to continue funding for the Maui Sea Grant Position.

Mahalo

(808)587-0391

DAVID Y. IGE
GOVERNOR OF HAWAII



**STATE OF HAWAII
DEPARTMENT OF LAND AND NATURAL RESOURCES**

POST OFFICE BOX 621
HONOLULU, HAWAII 96809

SUZANNE D. CASE
CHAIRPERSON
BOARD OF LAND AND NATURAL RESOURCES
COMMISSION ON WATER RESOURCE MANAGEMENT

ROBERT K. MASUDA
FIRST DEPUTY

M. KALEO MANUEL
DEPUTY DIRECTOR - WATER

AQUATIC RESOURCES
BOATING AND OCEAN RECREATION
BUREAU OF CONVEYANCES
COMMISSION ON WATER RESOURCE MANAGEMENT
CONSERVATION AND COASTAL LANDS
CONSERVATION AND RESOURCES ENFORCEMENT
ENGINEERING
FORESTRY AND WILDLIFE
HISTORIC PRESERVATION
KAHOOLAWE ISLAND RESERVE COMMISSION
LAND
STATE PARKS

April 12, 2019

To: Maui County Council Economic Development and Budget Committee

Subject: Testimony in Support of Planning Department Grant for the University of Hawai'i Sea Grant Program

Dear Chair Rawlins-Fernandez and Economic Development and Budget Committee Members:

I am the Administrator of the Office of Conservation and Coastal Lands (OCCL) in the Department of Land and Natural Resources. Please continue to support the University of Hawaii Sea Grant Program to continue a long-standing partnership with the County of Maui. Over the past 22 years, this partnership has been instrumental in encouraging and contributing to innovative policies, plans, and responses in coastal management relating to climate change and sea level rise, coastal hazards, and coastal processes. This program, currently staffed by Tara Owens, provides day to day technical assistance to County Departments, and this support also extends directly to the public and Maui's communities. Tara offers guidance to community groups or permit applicants to promote sustainable shoreline management and provides a conduit for coordination with County, State and Federal agencies and other stakeholders.

The OCCL has a long standing relationship with Tara and the County of Maui Planning Department in areas related to shoreline management, beach protection and restoration, erosion management, and climate change. These relationships have led to an overall improvement in the quality of Maui's shorelines and beaches and has assisted communities in being more resilient to climate change.

Thank you for the opportunity to submit testimony in support of this program.

Sincerely,

A handwritten signature in black ink, appearing to read "Sam Lemmo", written over a large, loopy flourish.

Sam Lemmo, Administrator
Office of Conservation and Coastal Lands

EDB Committee

From: Alice L. Lee
Sent: Monday, April 15, 2019 11:42 AM
To: EDB Committee
Subject: FW: Property tax increase

From: DOUGLAS AXEN <d.axen@comcast.net>
Sent: Monday, April 15, 2019 11:10 AM
To: Keani N. Rawlins <Keani.Rawlins@mauicounty.us>; Tasha A. Kama <Tasha.Kama@mauicounty.us>; Riki Hokama <Riki.Hokama@mauicounty.us>; Alice L. Lee <Alice.Lee@mauicounty.us>; Mike J. Molina <Mike.Molina@mauicounty.us>; Tamara A. Paltin <Tamara.Paltin@mauicounty.us>; Shane M. Sinenci <Shane.Sinenci@mauicounty.us>; Yukilei Sugimura <Yukilei.Sugimura@mauicounty.us>
Subject: Property tax increase

I am a property owner at Mahana, Kaanapali, and I understand you are planning on raising taxes in Maui County. Please give this plan serious consideration....the people you are talking about are the people who bring income to your area. Maui is already considered one of the most expensive islands....Raising taxes would give possible guests to your island reason to reconsider their choice and certainly be of concern to employees who work for these employers.

Please give careful thought to your decision. It may not bring the outcome you are wanting!

Mahalo

Sandra Axen

EDB Committee

From: Alice L. Lee
Sent: Monday, April 15, 2019 11:43 AM
To: EDB Committee
Subject: FW: Re Road Conditions

From: Steve Forman <stevenmforman@yahoo.com>
Sent: Monday, April 15, 2019 8:13 AM
To: Keani N. Rawlins <Keani.Rawlins@mauicounty.us>; Kelly King <Kelly.King@mauicounty.us>; Shane M. Sinenci <Shane.Sinenci@mauicounty.us>; Tamara A. Paltin <Tamara.Paltin@mauicounty.us>; Tasha A. Kama <Tasha.Kama@mauicounty.us>; Yukilei Sugimura <Yukilei.Sugimura@mauicounty.us>; Alice L. Lee <Alice.Lee@mauicounty.us>; Riki Hokama <Riki.Hokama@mauicounty.us>; Mike J. Molina <Mike.Molina@mauicounty.us>
Subject: Re Road Conditions

Dear Council Members

In regards to the last email I wrote on the condition of the roads. I want to say I recognize that the current state of affairs is an outcome from previous times and is not a direct reflection of the current Administration. Having known that already I would have liked to have brought that up in my previous email because I do appreciate this Council's good intentions for doing what's right.

What seems to have happened and I'm open for clarity on this, is that over the last 15 years or so road repair and maintenance started falling behind and it progressed through the years until it became accepted as the normal mode of operation.

In my reference towards the Civic Center project I was surprised that more Council Members couldn't see that the money could be spent more wisely with the roads being in dire need of funding. Many needing a surface coat with some in extremely poor shape and are beyond what anyone should be asked to drive upon. This is what's so frustrating when you have to drive on these roads day after day year after year when it's really just a case of neglect.

I know that it might be hard to see when it was started years ago from previous administrations and this is what is handed to you under the belief that there wasn't the funds to repair them and it might be true that the way the funds were being appropriated through gas tax and registration fees was not enough to cover the costs of fixing them but it doesn't relieve the County from the responsibility to appropriate the monies needed and to take care of the roads.

Please take a look at this and do what is needed to remedy this situation. It isn't right to ask the residents to drive on such neglected roads. Especially when it is causing accidents and damage to their cars.

Thank You
Steven Forman

EDB Committee

From: Taija-Rae Espaniola-Basa <taijarae.espaniolabasa@meoinc.org>
Sent: Monday, April 15, 2019 12:30 PM
To: EDB Committee
Subject: EDB-1 Support for Office of Economic Development-Kuha'o Business Center

Dear Mayor Victorino and Maui County Council,

My name is Taija-Rae Espaniola and I am the loan fund manager at Maui Economic Opportunity, Molokai Business Development Center. Cynthia and the staff at Kuha'o Business Center have been vital in my ability to help our community's economic development. I am new to the position, about six months in and I was coming from a completely different field of work. Since starting, I have taken three workshops with Kuha'o Business Center and we also collaborated on one of them. They have helped me tremendously in understanding small business' and how they work, they have been a great resource for me and my clientele, and they have brought various experts to the island for presentations and one-on-one sessions.

Moloka'i's unique economy is predominately dependent on outside resources. It is our goal to provide support, education and tools necessary in order for our community to sustain itself. We would all love to see the money earned here, spent here as well. Local business' are the only way to achieve that and I believe Kuha'o Business Center is an essential part of us being able to make sustainability a reality.

I humbly ask your continued support for them.

Mahalo nui loa,

Taija-Rae Espaniola, Loan Fund Manager
Maui Economic Opportunity, Inc./Business Development Center
380 Kolapa Pl. Kaunakakai HI 96748
Direct Line: 808.553.3270

MEO's mission is to strengthen the community while helping people in need restore their hope, reach their potential, and enrich their lives.

Confidentiality Note: This e-mail is intended only for the person or entity to which it is addressed and may contain information that is privileged, intended recipient, or any employee or agent responsible for delivering the message to the intended recipient, is prohibited. If you have received this e-mail in error, please contact the sender and destroy.

MEO's mission is to strengthen the community while helping people in need restore their hope, reach their potential, and enrich their lives.

Confidentiality Note: This e-mail is intended only for the person or entity to which it is addressed and may contain information that is privileged. Distribution or copying of this e-mail or the information herein by anyone other than the intended recipient, or any employee or agent responsible for delivering the message to the intended recipient, is prohibited. If you have received this e-mail in error, please contact the sender and destroy.

EDB Committee

From: Halekaukau <Halekaukau@rcchawaii.org>
Sent: Monday, April 15, 2019 2:38 PM
To: EDB Committee
Subject: Hale Kau Kau testimony for EDB-1 Proposed Fiscal Year 2020
Attachments: Watanabe Testimony 4.2019.docx

Aloha from Hale Kau Kau!

Thank you for accepting written testimony from the Rev. Monsignor Terrence Watanabe, Executive Director of Hale Kau Kau at St. Theresa Church. His testimony is attached, and submitted for consideration by the Maui County Council Economic Development and Budget Committee.

Hale Kau Kau Program Director Claudine San Nicolas plans to attend Wednesday's budget hearing to testify in person.

If you have any questions, please don't hesitate to send an e-mail back to us, or call our office at 875-8754.

Have a blessed day.
Hale Kau Kau Staff
www.halekaukau.org

Advisory Board:
Secretary: Dr. Mary Trotto
Members:
Karin Carlson
Joel Martin
David Reader



Executive Director:
Rev. Msgr. Terrence Watanabe
Program Director:
Claudine San Nicolas
Financial Officer:
Paul Corarito

April 16, 2019

Aloha Council Members,

Our mission at Hale Kau Kau is to alleviate hunger in South Maui by providing a hot, nutritious meals to the homebound, the homeless and the hungry once a day, 365 days per year. We have done so for 27 years as a ministry of St. Theresa Church in Kihei. Our motto is to "Serve with Compassion and Aloha."

Currently, we prepare 145 to 150 meals a day, of which more than half get delivered by volunteer drivers to the frail, the sick, the disabled and the elderly of our community. For some homebound clients and the guests at our kitchen window, Hale Kau Kau's dinner may be their only substantial meal of the day. And in the case of our homebound clients, the volunteer drivers may be the only people they have contact with when our meals are delivered.

Our annual budget is close to a half-million per year, and, of that amount, the County of Maui has provided \$100,000, in each of the last four fiscal years. Today, I thank you on behalf of the Hale Kau Kau staff, the Advisory Board, parishioners at St. Theresa Church, our guests, our homebound clients and the kitchen volunteers for your consideration for the proposed county funding of \$100,000, for fiscal year 2020.

It costs Hale Kau Kau approximately \$9 to provide a single meal, and of that the county support accounts for approximately 20 percent of our costs. The grant administered through the County's Department of Housing and Human Concerns Grants Management Division is a critical piece of our overall funding. With the help of generous donors and amazing volunteers, we raise most of our own funding.

In fiscal 2018, we raised a record \$225,000 at our annual dinner and auction; and for this current fiscal year, we garnered just under \$200,000. We have acquired another half-a-dozen new partnerships in the last nine months with local businesses, farmers, hotels, and even a bank in South Maui who provide the time, talent and treasure in ensuring that anyone who comes to our window and/or gets a meal delivered can be assured that we all care about their well-being.

With prayerful best wishes, I remain,

Sincerely in Christ,

Rev. Msgr. Terrence Watanabe
Executive Director, Hale Kau Kau

A Program of St. Theresa Church, Roman Catholic Church in the State of Hawaii, 501(c)3
25 W. Lipoa Street, Kihei HI 96753 Phone: 808.875.8754 Fax: 808-875-4674
E-mail: halekaukau@rcchawaii.org Webpage: www.halekaukau.org Tax ID 99-0222548

EDB Committee

From: Alice L. Lee
Sent: Monday, April 15, 2019 11:45 AM
To: EDB Committee
Subject: FW: Opposed to tax rate increase for short term rentals

From: Zelig Duvauchelle <zelieduvauchelle@me.com>
Sent: Saturday, April 13, 2019 8:38 AM
To: Keani N. Rawlins <Keani.Rawlins@mauicounty.us>
Cc: Kelly King <Kelly.King@mauicounty.us>; Riki Hokama <Riki.Hokama@mauicounty.us>; Tasha A. Kama <Tasha.Kama@mauicounty.us>; Alice L. Lee <Alice.Lee@mauicounty.us>; Tamara A. Paltin <Tamara.Paltin@mauicounty.us>; Yukilei Sugimura <Yukilei.Sugimura@mauicounty.us>; Shane M. Sinenci <Shane.Sinenci@mauicounty.us>; EDB Committee <EDB.Committee@mauicounty.us>
Subject: Opposed to tax rate increase for short term rentals

Aloha Keani and Budget Committee,

I own a short term rental home in Puko'o on Molokai where my family has lived for many generations. I stay in a small studio on the same 'aina while renting out the main house. This is one of the ways I make a living. I also do alternative healing work, on Molokai and Maui, and I'm a grassroots musician. The rental income allows me to do the work I really love and that is my "calling".

I oppose the tax rate increase and I propose short term rentals (owned by local folks like me) have the same tax classification as Bed & Breakfasts.

This is urgent! My property taxes in 2016 (before I received my STRH permit) **was \$1,384.56** and in **2018** my taxes were **\$6,743.78**

Now you are proposing another increase, and **I am questioning whether I can afford to keep my family home** with ever increasing expenses. (Flood insurance, Hurricane insurance, Liability insurance, Yard and home maintenance, TAT taxes, GE taxes, etc., etc.,)

I am the last local on Pukoo beach. Please help me keep my family home!!!

Mahalo,

Zelig K Duvauchelle
8714 Kamehameha V Hwy
Kaunakakai, HI 96748

808-558-8207

EDB Committee

From: John Flom <john.flom@meoinc.org>
Sent: Monday, April 15, 2019 9:54 AM
To: EDB Committee
Subject: Letter of support for MEO BDC
Attachments: Letter of Support MEO Business Development Center-Elizabeth Dunlop.pdf

Aloha,
Attached is an additional letter of support for MEO Business Development Center.
Mahalo!
John

--

John Flom, Loan Fund Manager

Maul Economic Opportunity, Inc.
99 Mahalani St, Wailuku HI 96793
<http://www.meoinc.org>

T: 808-249-2990 **M:** **E:** john.flom@meoinc.org

MEO's mission is to strengthen the community while helping people in need restore their hope, reach their potential, and enrich their lives.

Confidentiality Note: This e-mail is intended only for the person or entity to which it is addressed and may contain information that is privileged. Distribution or copying of this e-mail or the information herein by anyone other than the intended recipient, or any employee or agent responsible for delivering the message to the intended recipient, is prohibited. If you have received this e-mail in error, please contact the sender and destroy.

Aloha,

My name is Elizabeth Dunlop. I sincerely thank and appreciate John Flom and his team at MEO Business Development Center for providing the Core Four Business Planning Course to Maui counties starry eyed current round of excited entrepreneurs! I began this class believing I could have a perfect Bulletproof business plan in 6 weeks! I knew starting a business would be challenging but it was extremely helpful to realize just how challenging it actually is. I was presented with so many helpful tools, Inspiring affirmations and deep reality checks! I realized that I need more time, patience, finances and training before I can start my business. By the end of the class sessions I felt more empowered and confident than ever that I know what to do to get this business going. I have the ability to adapt to changes in my business plan and the concept of how challenging it's going to be to not only start a business but to keep it going and be successful. I am getting ready and more prepared to take on these challenges!

Mahalo Nui Loa!

~Liz

EDB Committee

From: Kathleen Alexander <studio@kathleenalexanderart.com>
Sent: Monday, April 15, 2019 9:03 AM
To: EDB Committee
Subject: EDB Testimony MISC

Dear Council Members,

My husband and I attended the meeting in Paia last week. We left at the break-- I found out I was number 33 of 35 on the remaining testimony list, and got the email address to write to you instead.

We live at 2645 Alohia Pl. Unit A, in Haiku. We're a 1/4 mile from Kokomo. Coqui frogs first showed up in our immediate area in August of 2018. The owner of that property does not live on island, so my husband and I went out at night to spray the frogs on their lot. MISC did not have the funding to come out for just a few frogs. They have been dealing with spraying areas with thousands of them. Since then, we have had multiple frogs show up on either our lot or the neighbors to either side of us.

One thing we have noticed is that our coqui frogs have shown up immediately after a visit from a gardening service. We believe they are hitch hiking their way to our end of the neighborhood, rather than getting here on their own, as there isn't an infestation all the way to our house. We don't know how to solve that problem. How do you convince every gardening service in the area to spray their equipment and vehicles with citric acid?

Right now we have one coqui frog up in the top of a lauhala tree outside our bedroom windows. My husband has been going on our roof in the dark to spray the tree without success. If you haven't heard these frogs, you should make a point of doing so. If you're wondering how bad one little frog could be, let me tell you-- it's bad. It's a loud, high pitched whistle. And the worry for us is that if the infestation becomes so bad we can't sleep or hear inside our house at night, how will we continue to live in our home? We have heard horror stories from neighbors in Haiku. What do you do when you can't open your windows at night in the summer and it's 80 degrees?

I was on the Big Island last month, staying in downtown Kona by the King Kamehameha Hotel. There were coqui frogs in force in downtown Kona. I was shocked. I thought they were contained to the Hilo side. This can happen to Maui too.

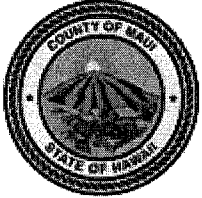
Please fund MISC. We need help. We need to be able to call them and get a response. They haven't had the resources to help us. We are scared. No one understands how bad this is until they experience it.

Mahalo, Kathleen Alexander
2645 Alohia Pl., Apt A
Haiku, HI 96708
808-283-1166

EDB Committee

From: Kelly King
Sent: Monday, April 15, 2019 10:09 AM
To: EDB Committee
Subject: Fw: Follow-up on the MSGN testimony to our Maui County Council at the Paia Community Center

With Aloha,



Office of Council Chair Kelly T. King

South Maui Residency
Office: 808.270.7108
200 South High Street, 7th Fl
Wailuku HI 96793
mauicounty.us

From: Lehn Huff1 <msgn@hawaii.rr.com>
Sent: Sunday, April 14, 2019 9:53 AM
To: Yukilei Sugimura; Keani N. Rawlins; Kelly King; Shane M. Sinenci; Tasha A. Kama; Tamara A. Paltin; Mike J. Molina; Alice L. Lee; Riki Hokama
Cc: Kathy Becklin
Subject: Follow-up on the MSGN testimony to our Maui County Council at the Paia Community Center

Aloha e Maui County Council Members:

Mahalo for the opportunity to give testimony to you this past Thursday at the Paia Community Center about the recent merger of Grow Some Good (our new fiscal sponsor) and the Maui School Garden Network. Please see below for the updated ask rationale on the question asked by the Council Budget Chair, Keani Rawlins-Fernandez at the end of my testimony, "Could you please tell us, what is your ask?"

MSGN is asking for \$70,000 (present funding amount is \$25,000) as a dual-ask on behalf of BOTH MSGN and GROW SOME GOOD since we have just recently merged after 10 years of working with our schools.

RATIONALE FOR THE NEW BUDGET ASK:

-The actual annual budget for MSGN is \$125,000.00 and the annual budget for Grow Some Good, who has had a 501(c) for three years now, is \$250,000 for a total of \$ 375,000. Our ask is a 5% ask for our two organizations, \$70,000.

-Over the past 5 years Tri-Isle R,C,&D has repeatedly raised it's administrative fee to the point where, this past year, it took 19% of the \$25,000 budget for MSGN as an administrative fee. Oh, yes, and the set-up fee is \$100.00 per grant. Grow Some Good charges an 8% administrative fee which is the lowest I know of and they do not put a fee on donations that MSGN brings in.

Finally, our work together is synergistic. We do not work in silos. We now have a presence in all our Maui and Lana'i DOE schools K-12.

I concluded my response to Council Member Rawlins' question by saying:

“When it comes to garden learning we are your boots on the ground!”

We don't just put out a curriculum, we are there to teach it... in outdoor “classrooms”...

Mahalo Nui for All You Do. It is very much appreciated!

Lehn Huff, Director
Maui School Garden Network
PO Box 458
Haiku, Hawaii 96708
(808) 250-8323 Cell
msgn@hawaii.rr.com

Facebook: Maui School Garden Network

EDB Committee

From: Robert Stephenson <rob@molokaichamber.org>
Sent: Sunday, April 14, 2019 10:51 PM
To: EDB Committee
Cc: Robert Stephenson
Subject: April 15 2019 Budget Hearing on Molokai
Attachments: 4-15-19 MKK Chamber Testimony - County of Maui budget.pdf

Aloha,

Please find our testimony attached in support of economic development activities for Molokai.

Sincerely,

Rob Stephenson, President
808 658 0608
rob@molokaichamber.org



MOLOKAI CHAMBER OF COMMERCE

P.O. Box 515
Kaunakakai, HI 96748

T 808 658 0608

info@molokaichamber.org

www.molokaichamber.org

April 15, 2019
MAUI COUNTY COUNCIL
ECONOMIC DEVELOPMENT AND BUDGET COMMITTEE
MONDAY, APRIL 15 2019, 6:00 P.M.
MITCHELL PAUOLE COMMUNITY CENTER, MAIN HALL
90 AINOA STREET, KAUNAKAKAI, MOLOKAI 96748

SUPPORT FOR ECONOMIC DEVELOPMENT ITEMS FOR MOLOKAI.

Aloha Chair Rawlins-Fernandez, Vice Chair King and Committee Members:

As a representative organization of the island of Molokai with dozens of members who employ hundreds of our neighbors, friends and families, we are respectfully submitting testimony to **SUPPORT** the economic development budget items that help provide opportunities to our Molokai business community.

One critical component of our economic development landscape that has a disproportionately positive impact on our small businesses is the Mayor's Office of Economic Development's Kuha'o Business Center here on Molokai. The programs they offer and provide support for include OED Grants, Made in Maui County Festival (MIMCF), MIMCF Internship Program, Kuha'o Business Center Seminars and Workshops and various Counseling Services.

The Kuha'o Business Center also partners each year with the Molokai Chamber of Commerce, U.H. Maui College Molokai Education Center and Maui Economic Opportunity to host the annual Molokai Business Conference which hosted over 100 business owners and employees this past August, providing them classes, resources and opportunities to help strengthen and grow their businesses.

Other economic development items that are important to Molokai's local economy are the many community events that rely on critical grant funding in order to take place. These local events help strengthen our economy and have an economic trickle down effect far beyond the date of the events.

The MEO Bus service is another economic development item that plays a crucial role in our community by providing transportation needs to our residents to attend appointments, patronize our local businesses and even get to and from the Molokai Airport when traveling off island.

There is a delicate balance to our economy here on Molokai. Because our geographic isolation, our businesses pay increased shipping for products and raw materials, bear the burden of some of the highest energy costs in the state, lack of economies of scale, pay an extra leg of shipping to get products to the broader statewide market, and are at an overall disadvantage compared to other neighbor island businesses.

This is why each economic development item is so important to Molokai. We need all the help we can get to help keep our businesses in business.

We support our working families and our business community provides the jobs to do so. Please help us to continue supporting the financial health and well being of our island business community and residents by supporting these, among other economic development items..

Thank you for your time and consideration.

Sincerely,

Robert Stephenson, President & CEO

EDB Committee

From: Scott Fisher <scott@hilt.org>
Sent: Tuesday, April 16, 2019 1:10 PM
To: EDB Committee
Subject: Testimony of Support for Ke Ao Hali'i Budget FY 2020
Attachments: Signed Letter of Support for Ke Ao Halii.pdf

Aloha Economic Development and Budget Committee,

Please accept this letter from the Hawaiian Islands Land Trust in support of Ke Ao Hali'i's Budget request for \$750,000 to protect lands along the Hana Coast. I also intend to provide oral testimony at the budget hearing on the 17th of April.

Mahalo

Scott Fisher

Scott Fisher, Ph.D.

*Associate Executive Director of Conservation
Hawaiian Islands Land Trust*

Direct: 808-357-7739

www.hilt.org

scott@hilt.org



Our Mission: To protect the lands that sustain us for current and future generations.



April 15, 2019

To: Maui County Council, Budget Committee

200 South High Street,

Kalana o Maui Building, #708

Wailuku, HI. 96793;

From: Hawaiian Islands Land Trust

P.O. Box 965

Wailuku, HI. 96793;

Re: Open Space Funding for Ke Ao Hali'i to Acquire title to lands along the Hana Coast.

Aloha Members of the Maui County Council,

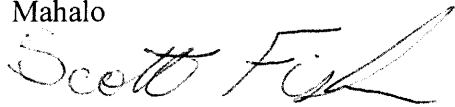
Please accept this letter as an indication of the Hawaiian Islands Land Trust's (HILT) support for the allocation of funds to Ke Ao Hali'i in order to protect 26 acres of important coastal lands along the Hana Coast. Protecting these lands will ensure that the character and integrity of Hana will remain intact for generations to come. The threat of development along this coast is real, and keeping these lands open and available to the public, through Ke Ao Hali'i's community based management will realize substantial benefits to the community. The time has come to protect these lands, and Ke Ao Hali'i has demonstrated that they have both the knowledge, wisdom and passion to do this.

The Hawaiian Islands Land Trust has been working with Ke Ao Hali'i since their formative stages when they came together as a group of passionate kama'aina, dedicated to protecting the special places and wahi pana of Hana. Over the course of the past several years, the staff of the Hawaiian Islands Land Trust has observed the passion and commitment of Ke Ao Hali'i to ensure the cultural and ecological integrity of these lands. Their comprehensive understanding of the dynamics and complexities of the Hana community make them an ideal candidate for this funding. The incredible people of Ke Ao Hali'i have consistently and repeatedly demonstrated they have the knowledge and commitment to undertake the management of this land in a way that benefits all of Maui's citizens. Because HILT has been working closely with Ke Ao Hali'i for many years, HILT is ready to assist Ke Ao Hali'i in any way that we can, should they make such a request.

The commitment to Hana that Ke Ao Hali'i has shown can serve as a model of how the power of a group of committed people can effect change for the benefit of the entire community. Funding this grant request will help to protect the ecological integrity and health of a substantial

area of the Hana Coast. If you have any questions, or if I can help in any other way, please do not hesitate to contact me at scott@hilt.org; or (808) 357-7739.

Mahalo

A handwritten signature in cursive script that reads "Scott Fisher". The signature is written in black ink and is positioned above the printed name and title.

Scott Fisher, Ph. D.

Chief Conservation Officer

EDB Committee

From: Baum/Inouye <ozland@ozlandmaui.com>
Sent: Monday, April 15, 2019 8:37 PM
To: EDB Committee
Subject: EDB-1 Support for Maui Economic Development Board
Attachments: EDB-1 Support MEDB.pdf

Please see the attachment in SUPPORT for MEDB and the Maui County Healthcare Partnership.

Colleen F Inouye MD MMM CPE FAAPL FACOG

COLLEEN F. INOUE, M.D., INC.
Obstetrics/Gynecology
Reproductive Endocrinology/Infertility

200-2 Kalepa Place
Kahului, Maui, Hawaii 96732
Telephone: (808) 871-7122
Fax: (808) 877-4134

EDB-1 Support for Maui Economic Development Board

April 15, 2019

Dear Mayor Victorino and the Maui County Council,

Please support the Maui Economic Development Board and the Maui County Healthcare Partnership. Maui Economic Development Board (MEDB) has many vital functions and roles that it plays in the Maui community and organizing the Maui County Healthcare Partnership (MCHP) is one of them.

MEDB has assisted MCHP, bringing together the many healthcare partners on Maui. This has allowed healthcare organizations/businesses, small to large, to gather and collaborate. It has increased the healthcare conversations between entities to improve the healthcare on Maui. This organization has also been tasked to increase the healthcare workforce on Maui, incorporating our island youth.

MEDB has always been an important player in our community, with over 135 industry partners, and once again is taking the lead in tackling important issues, this time in healthcare. Please **support** MEDB and the Maui County Healthcare Partnership.

Thank you for your kind attention to this testimony.

Sincerely,



Colleen F Inouye MD MMM CPE FAAPL FACOG

EDB Committee

From: Gary Albitz <albitzg@gmail.com>
Sent: Monday, April 15, 2019 10:10 PM
To: EDB Committee
Cc: gerry@medb.org; Mary Albitz
Subject: EDB-1 Support for Maui Economic Development Board

Maui County Council and Mayor Victorino,

I support the valuable work that the Maui Economic Development Board (MEDB) does for the Business Community of Maui and Hawaii. Even more so, I support the continued and if possible, the increased funding of MEDB in the County Budget.

After over 40 years of working in the High Tech industry and retiring to Maui, my view is that Maui needs a very solid and safe platform for businesses to rapidly develop. On Maui no one has the time or money to experiment and spend months and thousands to start a business. MEDB provides that unique opportunity with leveraged and accelerated business consulting/coaching. Their work with STEM to prepare young students with business and scientific knowledge, is just the beginning of Maui's business eco-system

MEDB provides a very valuable service to business owners, entrepreneurs, and those that aspire to be. In the given economic environment here on Maui, of high employment, University enrollment and attendance is down significantly. With people working full time, how else can they get the education, training, and support to dream, drive, build, start, and sustain a new business? MEDB. The Maui businesses that have been created under the guise of MEDB brings significant revenue and jobs to Maui (and thus tax revenue).

I have been involved over the last 3 years in two MEDB sponsored Start Up Weekends, multiple workshops and seminars. I volunteer my professional time and personal money to support MEDB in creating the most current, dynamic and successful business environment that I am aware of. Their results are incredible in moving business ideas to qualified concepts to viable business plans to actual prototypes. Their clients receive mini-MBAs in a weekend.

The opportunity that MEDB and their partners from diverse places (academia, government, private industry) provide for Mauians to build sustainable businesses correctly, efficiently and effectively, the first time, is invaluable.

The personnel at MEDB are some of the finest business people with an extensively in-depth experience on how to do business on Maui (very unique). In addition, their established network of existing Maui businesses brings a valuable aspect of business collaboration to new businesses.

I reiterate that I support the full and, if possible, expanded funding of MEDB. MEDB provides one of the most effective Return on the County's Investment (ROI). In order for Maui to become self-sufficient and sustaining, Maui needs a strong and effective (and funded) MEDB.

Regards

Gary Albitz

CEO Island Art Party

CEO Aloha Business Bitz

Lecturer, University of Hawaii, Maui College; Business/Technology Department and Food Akamai Series

EDB Committee

From: mary@jigsawjava.com
Sent: Monday, April 15, 2019 10:38 PM
To: EDB Committee
Cc: gerry@medb.org
Subject: EDB-1 Support for Maui Economic Development Board

Maui County Council and Mayor Victorino,

I support the valuable work that the Maui Economic Development Board (MEDB) does for the Business Community of Maui and Hawaii. Even more so, I support the continued and if possible, the increased funding of MEDB in the County Budget.

After many years of owning a small business and helping small businesses expand, my view is that Maui needs a very solid and safe platform for businesses to rapidly develop. On Maui no one has the time or money to experiment and spend months and thousands to start a business. MEDB provides that unique opportunity with leveraged and accelerated business consulting/coaching. Their work with STEM to prepare young students with business and scientific knowledge, is just the beginning of Maui's business eco-system

MEDB provides a very valuable service to business owners, entrepreneurs, and those that aspire to be. In the given economic environment here on Maui, of high employment, University enrollment and attendance is down significantly. With people working full time, how else can they get the education, training, and support to dream, drive, build, start, and sustain a new business? MEDB. The Maui businesses that have been created under the guise of MEDB brings significant revenue and jobs to Maui (and thus tax revenue).

I have been involved over the last 3 years in a few of their workshops and seminars. They simplify concepts to actionable levels without being condescending. I have given money to support MEDB in creating the most current, dynamic and successful business environment. Their results are incredible in moving business ideas to qualified concepts to viable business plans to actual prototypes. Their clients receive mini-MBAs in a weekend.

The opportunity that MEDB and their partners from diverse places (academia, government, private industry) provide for Mauians to build sustainable businesses correctly, efficiently and effectively, the first time, is invaluable.

The personnel at MEDB are some of the finest business people with an extensively in-depth experience on how to do business on Maui (very unique). In addition, their established network of existing Maui businesses brings a valuable aspect of business collaboration to new businesses.

I reiterate that I support the full and, if possible, expanded funding of MEDB. MEDB provides one of the most effective Return on the County's Investment (ROI). In order for Maui to become self-sufficient and sustaining, Maui needs a strong and effective (and funded) MEDB.

Mahalo,

Mary Albitz
Owner, Island Art Party
RYLA Camp Co-Chair 2019-2020
Rotary District 5000 AG 2019-2020
Rotary District 5000 HOC, RI Convention 2020
808-269-2445

EDB Committee

From: Paulette Mau <moanikeala808@icloud.com>
Sent: Monday, April 15, 2019 8:00 PM
To: EDB Committee
Subject: EDB-1 Support for Maui Food Technology Center.

To Mayor Mike Victorino and The Maui County Council

I am sending this email as a supporter of The Maui Food Technology Center and as a participant of Maui Sunday Market. I ask that you please help MFTC with annual funding for MFTC to continue to create events for people like me to continue to participate in. Without MFTC it would be almost impossible to continue raising my children here on the island of Maui where they were born. I am a hard worker, work many different jobs just so I don't need to use the system for welfare or HUD. I humbly ask for your support in funding for MFTC.

MFTC assists local manufacturers in complying with state and federal laws, providing technical assistance (such as food safety), provide training on various topics such as exporting to Japan, and business and marketing services.

MFTC (Luana Mahi and Linn Nishikawa) is part of the Maui Sunday Market, a weekly event held in Kahului, where locals and visitors can come for good food, entertainment, crafts, and more. All of this helps support small businesses.

Collaborating with other organizations is part of MFTC's outreach. Examples include the Made in Maui County Festival (Luana Mahi, Linn Nishikawa and Gerry Smith), and the Maui Food Innovative Center Advisory Board (Luana Mahi). It takes a village to raise a business on Maui.

Mahalo,

Moani Mau
Sent from my iPhone

EDB Committee

From: Stephanie Lauifi <kalamaula@live.com>
Sent: Monday, April 15, 2019 6:25 PM
To: EDB Committee
Subject: EDB-1 Support for Office of Economic Development-Kuha'o Business Center.

Aloha,

My name is Stephanie Lauifi and I am in support of Kuhao Business Center's funding. I was blessed to do three internships there during my classes from UHMC. Jennifer Hawkins took me in and let me experience a different side of the business industry. I have owned my own business for over 20 years and I wanted to use my experience also to help the other people who were just starting a business. Interning there gave me a chance to go outside of my comfort zone. I am truly grateful for the experience I've learned from there and I know that the staff now of Cynthia and Tessie will continue to help our businesses here on Molokai. Kuhao Business Center is very important to our island.

Mahalo

Sent from Mail for Windows 10

EDB Committee

From: Gary Albitz <albitzg@gmail.com>
Sent: Monday, April 15, 2019 10:10 PM
To: EDB Committee
Cc: gerry@medb.org; Mary Albitz
Subject: EDB-1 Support for Maui Economic Development Board

Maui County Council and Mayor Victorino,

I support the valuable work that the Maui Economic Development Board (MEDB) does for the Business Community of Maui and Hawaii. Even more so, I support the continued and if possible, the increased funding of MEDB in the County Budget.

After over 40 years of working in the High Tech industry and retiring to Maui, my view is that Maui needs a very solid and safe platform for businesses to rapidly develop. On Maui no one has the time or money to experiment and spend months and thousands to start a business. MEDB provides that unique opportunity with leveraged and accelerated business consulting/coaching. Their work with STEM to prepare young students with business and scientific knowledge, is just the beginning of Maui's business eco-system

MEDB provides a very valuable service to business owners, entrepreneurs, and those that aspire to be. In the given economic environment here on Maui, of high employment, University enrollment and attendance is down significantly. With people working full time, how else can they get the education, training, and support to dream, drive, build, start, and sustain a new business? MEDB. The Maui businesses that have been created under the guise of MEDB brings significant revenue and jobs to Maui (and thus tax revenue).

I have been involved over the last 3 years in two MEDB sponsored Start Up Weekends, multiple workshops and seminars. I volunteer my professional time and personal money to support MEDB in creating the most current, dynamic and successful business environment that I am aware of. Their results are incredible in moving business ideas to qualified concepts to viable business plans to actual prototypes. Their clients receive mini-MBAs in a weekend.

The opportunity that MEDB and their partners from diverse places (academia, government, private industry) provide for Mauians to build sustainable businesses correctly, efficiently and effectively, the first time, is invaluable.

The personnel at MEDB are some of the finest business people with an extensively in-depth experience on how to do business on Maui (very unique). In addition, their established network of existing Maui businesses brings a valuable aspect of business collaboration to new businesses.

I reiterate that I support the full and, if possible, expanded funding of MEDB. MEDB provides one of the most effective Return on the County's Investment (ROI). In order for Maui to become self-sufficient and sustaining, Maui needs a strong and effective (and funded) MEDB.

Regards

Gary Albitz

CEO Island Art Party

CEO Aloha Business Bitz

Lecturer, University of Hawaii, Maui College; Business/Technology Department and Food Akamai Series

EDB Committee

From: mary@jigsawjava.com
Sent: Monday, April 15, 2019 10:38 PM
To: EDB Committee
Cc: gerry@medb.org
Subject: EDB-1 Support for Maui Economic Development Board

Maui County Council and Mayor Victorino,

I support the valuable work that the Maui Economic Development Board (MEDB) does for the Business Community of Maui and Hawaii. Even more so, I support the continued and if possible, the increased funding of MEDB in the County Budget.

After many years of owning a small business and helping small businesses expand, my view is that Maui needs a very solid and safe platform for businesses to rapidly develop. On Maui no one has the time or money to experiment and spend months and thousands to start a business. MEDB provides that unique opportunity with leveraged and accelerated business consulting/coaching. Their work with STEM to prepare young students with business and scientific knowledge, is just the beginning of Maui's business eco-system

MEDB provides a very valuable service to business owners, entrepreneurs, and those that aspire to be. In the given economic environment here on Maui, of high employment, University enrollment and attendance is down significantly. With people working full time, how else can they get the education, training, and support to dream, drive, build, start, and sustain a new business? MEDB. The Maui businesses that have been created under the guise of MEDB brings significant revenue and jobs to Maui (and thus tax revenue).

I have been involved over the last 3 years in a few of their workshops and seminars. They simplify concepts to actionable levels without being condescending. I have given money to support MEDB in creating the most current, dynamic and successful business environment. Their results are incredible in moving business ideas to qualified concepts to viable business plans to actual prototypes. Their clients receive mini-MBAs in a weekend.

The opportunity that MEDB and their partners from diverse places (academia, government, private industry) provide for Mauians to build sustainable businesses correctly, efficiently and effectively, the first time, is invaluable.

The personnel at MEDB are some of the finest business people with an extensively in-depth experience on how to do business on Maui (very unique). In addition, their established network of existing Maui businesses brings a valuable aspect of business collaboration to new businesses.

I reiterate that I support the full and, if possible, expanded funding of MEDB. MEDB provides one of the most effective Return on the County's Investment (ROI). In order for Maui to become self-sufficient and sustaining, Maui needs a strong and effective (and funded) MEDB.

Mahalo,

Mary Albitz
Owner, Island Art Party
RYLA Camp Co-Chair 2019-2020
Rotary District 5000 AG 2019-2020
Rotary District 5000 HOC, RI Convention 2020
808-269-2445

EDB Committee

From: Paulette Mau <moanikeala808@icloud.com>
Sent: Monday, April 15, 2019 8:00 PM
To: EDB Committee
Subject: EDB-1 Support for Maui Food Technology Center.

To Mayor Mike Victorino and The Maui County Council

I am sending this email as a supporter of The Maui Food Technology Center and as a participant of Maui Sunday Market. I ask that you please help MFTC with annual funding for MFTC to continue to create events for people like me to continue to participate in. Without MFTC it would be almost impossible to continue raising my children here on the island of Maui where they were born. I am a hard worker, work many different jobs just so I don't need to use the system for welfare or HUD. I humbly ask for your support in funding for MFTC.

MFTC assists local manufacturers in complying with state and federal laws, providing technical assistance (such as food safety), provide training on various topics such as exporting to Japan, and business and marketing services.

MFTC (Luana Mahi and Linn Nishikawa) is part of the Maui Sunday Market, a weekly event held in Kahului, where locals and visitors can come for good food, entertainment, crafts, and more. All of this helps support small businesses.

Collaborating with other organizations is part of MFTC's outreach. Examples include the Made in Maui County Festival (Luana Mahi, Linn Nishikawa and Gerry Smith), and the Maui Food Innovative Center Advisory Board (Luana Mahi). It takes a village to raise a business on Maui.

Mahalo,

Moani Mau
Sent from my iPhone

EDB Committee

From: Stephanie Lauifi <kalamaula@live.com>
Sent: Monday, April 15, 2019 6:25 PM
To: EDB Committee
Subject: EDB-1 Support for Office of Economic Development-Kuha'o Business Center.

Aloha,

My name is Stephanie Lauifi and I am in support of Kuhao Business Center's funding. I was blessed to do three internships there during my classes from UHMC. Jennifer Hawkins took me in and let me experience a different side of the business industry. I have owned my own business for over 20 years and I wanted to use my experience also to help the other people who were just starting a business. Interning there gave me a chance to go outside of my comfort zone. I am truly grateful for the experience I've learned from there and I know that the staff now of Cynthia and Tessie will continue to help our businesses here on Molokai. Kuhao Business Center is very important to our island.

Mahalo

Sent from Mail for Windows 10