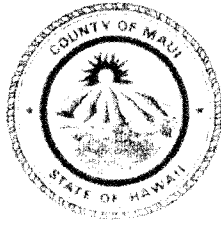


MICHAEL P. VICTORINO  
Mayor

JEFFREY T. PEARSON, P.E.  
Director

HELENE KAU  
Deputy Director



RECEIVED

2020 MAR 20 PM 1:09

OFFICE OF THE MAYOR

DEPARTMENT OF WATER SUPPLY  
COUNTY OF MAUI  
200 SOUTH HIGH STREET  
WAILUKU, MAUI, HAWAII 96793

March 20, 2020

Honorable Michael P. Victorino  
Mayor, County of Maui  
200 South High Street  
Wailuku, Hawaii 96793

APPROVED FOR TRANSMITTAL

  
\_\_\_\_\_  
Mayor Date 3/24/20

OFFICE OF THE  
COUNTY COUNCIL

2020 MAR 25 PM 1:59

RECEIVED

For Transmittal to:

Honorable Yuki Lei K. Sugimura, Chair  
Water, Infrastructure, and Transportation Committee  
Maui County Council  
200 South High Street  
Wailuku, Hawaii 96793

SUBJECT: **OPERATIONAL AND BUDGETARY REVIEW OF THE  
DEPARTMENT OF WATER SUPPLY (WIT-70)**

Dear Chair Sugimura:

In response to your memo dated March 5, 2020, Department of Water Supply responds as follows:

1. Please provide a complete pro forma financial analysis of the Department, including a comprehensive list of assets and liabilities, and any additional or potential liens.

Response:

Attached for your information is a copy of the Department of Water Supply Financial Statement and Supplementary Report dated June 30, 2019. Attachment "1".

2. What is the current designation of the Commission on Water Resource Management as it relates to any associated boundaries in Maui County, including any financial implications of those boundaries?

Response:

The Commission on Water Resource Management ("CWRM") has designated as Groundwater Management Areas the Iao Aquifer on Maui and all aquifer sectors on Molokai: West Sector, Central Sector, Northeast Sector and Southeast Sector. The boundaries are shown in Attachment 2, Appendix A. CWRM has designated Na Wai Eha as Surface Water Management Area. The boundaries are shown in Attachment 2, Appendix B. Although there is no direct financial implication associated with designation, water users must obtain water use permits to withdraw water. CWRM has to date not issued water use permits for Na Wai Eha, which has delayed and potentially risk the Department's ability to fully utilize the Iao Water Treatment Plant capacity to serve Central Maui demand. Attachment "2".

3. Please describe the condition of the Department's vehicle fleet.

Response:

The Water Department's fleet includes 151 vehicles. The fleet includes a wide variety of vehicles from sport utility vehicles, pick-up trucks and dump trucks to truck tractors. Our oldest is a 1964 Peterbuilt truck tractor and our newest is a 2020 Ford F350.

Approximately 65% of our fleet is in excellent working condition, 25% is fair to good, and 10% needs replacement. If approved, our vehicle requests for FY 2021 will cover approximately 5% of the 10% that needs replacement.

4. Please provide a detailed description and status of the Department's equivalent personnel vacancies.

Response:

See Attachment "3".

5. Describe the Department's current policy on hiring requirements, including any medical exams.

Response:

All selected outside candidates being hired into the County system first need to pass a urine drug test (which the Department pays for) before continuing with the hiring process. Candidates for positions that require a pre-employment physical must take and pass a physical (which the candidate pays for) before allowed to begin work. The County's third-party pre-employment medical examiner is Occu-Med; they work with physicians to make sure the exam includes tests for functions needed for the job profile they are being hired. Occu-Med contacts our DPO and lets them know if the candidates are medically qualified (MQ, no restrictions to doing the job), conditionally qualified (CQ, may need to wear corrective lenses when working, etc.), or that they did not pass the physical.

6. How is the Department preparing for County shoreline projects that have been or will be affected by climate change?

Response:

The Department has inventoried our systems and infrastructure that is located within the sea level rise 3.2 feet exposure zone. We have identified potential impacts to Department infrastructure, and will consider alternative strategies to address such impacts and synergies with other state agencies and county departments for collaborative planning and mitigation.

7. Please list any additional outstanding equipment needs for the Department.

Response:

Water Treatment Plants

In response to item No. 7, addressed to all divisions, with regards to the Water Treatment Plants Division, please see enclosed document no. 19-46, "FY 2020 Council Adopted Budget Equipment Detail" and "Proposed Fiscal Year 2021, Water Treatment Plant Operations". Attachment "4".

In these documents and supported by accompanying documents, you will see that we would like to request four (4) pieces of additional equipment to be added to the proposed Fiscal Year 2021 budget request. In January of 2020, Vehicle No. COM 2228 was in a serious accident rendering this critically needed truck unusable. In order to purchase a new truck on short notice, funds needed to be utilized that had been approved in the FY 2020 budget for Water Treatment Plant equipment. Therefore, the following equipment purchases were deferred:

One (1) Filter surface wash water pump @ \$10,000;  
One (1) Filter backwash water pump @ \$10,000; and  
Two (2) Finished water pumps @ 20,000 (\$10,000 each).

We would like to request that this \$40,000 worth of equipment approved for purchase in the FY 2020 budget be reinstated for expenditure in the proposed FY 2020-2021 budget.

8. Regarding the confusion from the Department's presentation to the Committee relating to its operating budget and associated percentage (pages 3 and 4 of the Department's presentation), please provide clarifying, correct data.

Response:

Attached please find a corrected copy of page 4 of the 6-page presentation given to the Committee at its meeting of February 24, 2020. Attachment "5".

9. Relating to the Watershed Protection Grants Programs:

- What percentage of its funding does the Department set aside for the program?

Response:

Of the FY 2020 \$70M operations budget, about 3.7% is allocated to watershed protection.

- Does the program provide for any data or analysis on if or how toxoplasmosis or other related effects stemming from invasive plants and invasive or feral animals are affecting the County's watersheds?

Response:

The Department funds watershed protection projects that provide benefits to fresh water supply. We are not aware of an impact to hydrologic functions from toxoplasmosis. Water rate funded projects do not address feral cat control to mitigate impact on native birds and potential spread of toxoplasmosis to marine mammals.

- Which watershed protection grant, if any, covers the South Maui region?

Response:

The Leeward Haleakala Watershed Restoration Partnership covers the south leeward area of Haleakala above 3,400 feet. The Department grant addresses reforestation to improve watershed functions. The project overlaps the Hapapa Watershed addressed in the Southwest Maui Watershed Plan.

10. Please provide an update on the following appropriations. Page references are to Ordinance 4988.

Response:

- \$500,000 for the development phase of the Pookela Well B expansion project (page 40).

Response:

The development phase of the Pookela Well B contract is for \$3,004,637.28 and was awarded to Alpha, Inc. The notice to proceed was issued on March 2, 2020 with 365 calendar days to complete the work. The FY 2020 funding of \$500,000 will be used to address unforeseen circumstances that may be encountered during construction to insure timely completion of project.

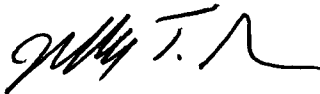
Honorable Yuki Lei K. Sugimura, Chair  
Water, Infrastructure, and Transportation Committee  
March 20, 2020  
Page 5

- \$3,000,000 for the development phase of the replacement well for Waiehu Heights Well 1 (page 40).

The drilling and development phases of the Waiehu Heights Well 1 is pending the completion of USGS's Groundwater Availability in the Waikapu, Iao, and Waihee Aquifer System, Maui, Hawaii, study estimated to be completed by the end of 2020. The FY 2020 funding of \$3,000,000 is anticipated to lapse based on this estimated completion date.

In advance, thank you for your attention to this matter. If you have any questions, please contact me.

Sincerely,



JEFFREY T. PEARSON, P.E.  
Director

JP:HK:ikk  
Attachments

# ATTACHMENT “1”

**DEPARTMENT OF WATER SUPPLY  
COUNTY OF MAUI  
(A Proprietary Fund of the County of Maui)**

FINANCIAL STATEMENTS AND SUPPLEMENTARY INFORMATION  
WITH INDEPENDENT AUDITOR'S REPORT

Fiscal Years Ended June 30, 2019 and 2018



**N&K CPAs, Inc.**

ACCOUNTANTS|CONSULTANTS

**DEPARTMENT OF WATER SUPPLY  
COUNTY OF MAUI**

**TABLE OF CONTENTS**

	<u>Page</u>
<b>PART I FINANCIAL SECTION</b>	
Independent Auditor's Report	4 - 6
Financial Statements	
Statements of Net Position	7 - 8
Statements of Revenues, Expenses, and Changes in Net Position	9
Statements of Cash Flows	10 - 11
Notes to Financial Statements	12 - 47
Supplementary Information	
Schedule I - Schedule of Capital Assets	49
Schedule II - Schedule of Long-Term Debt - General Obligation Bonds	50 - 53
 <b>PART II REPORT ON INTERNAL CONTROL OVER FINANCIAL REPORTING AND ON COMPLIANCE AND OTHER MATTERS</b>	
Independent Auditor's Report on Internal Control Over Financial Reporting and on Compliance and Other Matters Based on an Audit of Financial Statements Performed in Accordance with <i>Government Auditing Standards</i>	55 - 56



**PART I**  
**FINANCIAL SECTION**

## INDEPENDENT AUDITOR'S REPORT

To the Honorable Kelly King, Chair,  
and Members of the Council  
County of Maui  
Wailuku, Maui, Hawaii

### Report on the Financial Statements

We have audited the accompanying financial statements of the Department of Water Supply of the County of Maui (the Department), a proprietary fund of the County of Maui, as of and for the fiscal years ended June 30, 2019 and 2018, and the related notes to the financial statements, as listed in the table of contents.

### Management's Responsibility for the Financial Statements

Management is responsible for the preparation and fair presentation of these financial statements in accordance with accounting principles generally accepted in the United States of America; this includes the design, implementation, and maintenance of internal control relevant to the preparation and fair presentation of financial statements that are free from material misstatement, whether due to fraud or error.

### Auditor's Responsibility

Our responsibility is to express an opinion on these financial statements based on our audits. We conducted our audits in accordance with auditing standards generally accepted in the United States of America and the standards applicable to financial audits contained in *Government Auditing Standards*, issued by the Comptroller General of the United States. Those standards require that we plan and perform the audit to obtain reasonable assurance about whether the financial statements are free from material misstatement.

An audit involves performing procedures to obtain audit evidence about the amounts and disclosures in the financial statements. The procedures selected depend on the auditor's judgment, including the assessment of the risks of material misstatement of the financial statements, whether due to fraud or error. In making those risk assessments, the auditor considers internal control relevant to the entity's preparation and fair presentation of the financial statements in order to design audit procedures that are appropriate in the circumstances, but not for the purpose of expressing an opinion on the effectiveness of the entity's internal control. Accordingly, we express

no such opinion. An audit also includes evaluating the appropriateness of accounting policies used and the reasonableness of significant accounting estimates made by management, as well as evaluating the overall presentation of the financial statements.

We believe that the audit evidence we have obtained is sufficient and appropriate to provide a basis for our audit opinion.

### **Opinion**

In our opinion, the financial statements referred to above present fairly, in all material respects, the financial position of the Department, as of June 30, 2019 and 2018, and the changes in its financial position and its cash flows for the fiscal years then ended in accordance with accounting principles generally accepted in the United States of America.

### **Emphasis of Matter**

As discussed in Note 1, the financial statements of the Department, are intended to present the financial position, the changes in financial position, and cash flows of only that portion of the business-type activities of the County of Maui that is attributable to the transactions of the Department. They do not purport to, and do not, present fairly the financial position of the County of Maui as of June 30, 2019 and 2018, the changes in its financial position, or its cash flows for the fiscal years then ended in accordance with accounting principles generally accepted in the United States of America. Our opinion is not modified with respect to this matter.

### **Other Matters**

#### *Required Supplementary Information*

Management has omitted management's discussion and analysis, the schedules of proportionate share of the net pension liability, pension contributions, changes in the net OPEB liability and related ratios and OPEB contributions information that accounting principles generally accepted in the United States of America require to be presented to supplement the basic financial statements. Such missing information, although not a part of the basic financial statements, is required by the Governmental Accounting Standards Board who considers it to be an essential part of financial reporting for placing the basic financial statements in an appropriate operational, economic, or historical context. Our opinion on the basic financial statements is not affected by this missing information.

*Other Information*

Our audit was conducted for the purpose of forming an opinion on the Department's financial statements. The supplemental schedules of capital assets for the fiscal year ended June 30, 2019 and of long-term debt - general obligation bonds as of June 30, 2019 are presented for purposes of additional analysis and are not a required part of the basic financial statements.

The schedules of capital assets and of long-term debt - general obligation bonds are the responsibility of management and was derived from and relate directly to the underlying accounting and other records used to prepare the basic financial statements. Such information has been subjected to the auditing procedures applied in the audit of the basic financial statements and certain additional procedures, including comparing and reconciling such information directly to the underlying accounting and other records used to prepare the basic financial statements or to the basic financial statements themselves, and other additional procedures in accordance with auditing standards generally accepted in the United States of America. In our opinion, the schedules of capital assets and of long-term debt - general obligation bonds are fairly stated, in all material respects, in relation to the basic financial statements as a whole.

**Other Reporting Required by *Government Auditing Standards***

In accordance with *Government Auditing Standards*, we have also issued our report dated December 20, 2019 on our consideration of the Department's internal control over financial reporting and on our tests of its compliance with certain provisions of laws, regulations, contracts, and grant agreements and other matters. The purpose of that report is solely to describe the scope of our testing of internal control over financial reporting and compliance and the results of that testing, and not to provide an opinion on the effectiveness of the Department's internal control over financial reporting or on compliance. That report is an integral part of an audit performed in accordance with *Government Auditing Standards* in considering the Department's internal control over financial reporting and compliance.

*N&K CPAs, Inc.*

Honolulu, Hawaii  
December 20, 2019

**Department of Water Supply  
County of Maui  
STATEMENTS OF NET POSITION  
June 30, 2019 and 2018**

	<b>2019</b>	<b>2018</b>
<b>CURRENT ASSETS</b>		
Equity in pooled cash and investments held in County Treasury	\$ 70,510,717	\$ 62,131,066
Customer receivables		
Billed	4,416,275	4,401,711
Less: allowance for doubtful accounts	<u>(61,346)</u>	<u>(72,649)</u>
	4,354,929	4,329,062
Unbilled	<u>3,063,164</u>	<u>2,908,443</u>
Total customer receivables	<u>7,418,093</u>	<u>7,237,505</u>
Materials and supplies	1,673,652	1,698,198
Other current assets	<u>213,583</u>	<u>202,425</u>
Total current unrestricted assets	<u>79,816,045</u>	<u>71,269,194</u>
<b>RESTRICTED ASSETS</b>		
Equity in pooled cash and investments held in County Treasury	<u>35,245,317</u>	<u>23,125,025</u>
Total current assets	<u>115,061,362</u>	<u>94,394,219</u>
<b>CAPITAL ASSETS</b>		
Utility plant in service	634,482,747	602,043,460
Less accumulated depreciation	<u>(318,692,910)</u>	<u>(302,840,984)</u>
	315,789,837	299,202,476
Land	7,905,059	7,905,059
Construction work in progress	<u>34,418,791</u>	<u>48,842,240</u>
Total capital assets	<u>358,113,687</u>	<u>355,949,775</u>
<b>TOTAL ASSETS</b>	<u>473,175,049</u>	<u>450,343,994</u>
<b>DEFERRED OUTFLOWS OF RESOURCES</b>		
Deferred outflows of resources related to pensions	9,305,359	10,226,083
Deferred outflows of resources related to OPEB	3,451,852	2,528,321
Unamortized loss on advanced refunding	<u>116,702</u>	<u>132,986</u>
<b>TOTAL DEFERRED OUTFLOWS OF RESOURCES</b>	<u>12,873,913</u>	<u>12,887,390</u>
<b>TOTAL ASSETS AND DEFERRED OUTFLOWS OF RESOURCES</b>	<u>\$ 486,048,962</u>	<u>\$ 463,231,384</u>

See accompanying notes to financial statements.

**Department of Water Supply  
County of Maui  
STATEMENTS OF NET POSITION (Continued)  
June 30, 2019 and 2018**

	2019	2018
<b>CURRENT LIABILITIES</b>		
Payable from unrestricted current assets		
Bonds payable, current portion	\$ 2,950,708	\$ 2,578,899
Notes payable, current portion	2,349,064	1,602,385
Accounts payable	2,746,346	2,734,547
Accrued vacation, current portion	865,175	804,619
Accrued compensatory time off	114,265	125,292
Construction contracts payable, including retainages	2,528,146	302,701
Claims and judgments	512,940	844,093
Accrued interest payable	382,214	373,350
Customer advances for utility construction	305,091	179,886
	12,753,949	9,545,772
Payable from restricted assets		
Construction contracts payable, including retainages	788,574	2,283,651
Customer deposits	758,279	677,427
Refundable advances	1,000,000	1,000,000
	2,546,853	3,961,078
Total current liabilities	15,300,802	13,506,850
<b>NON-CURRENT LIABILITIES</b>		
Bonds payable, non-current portion	20,468,354	19,140,428
Notes payable, non-current portion	43,048,918	44,520,699
Net pension liability	41,040,357	39,254,115
Net OPEB liability	23,903,694	24,037,169
Accrued vacation, non-current portion	888,390	1,061,193
Total non-current liabilities	129,349,713	128,013,604
<b>TOTAL LIABILITIES</b>	144,650,515	141,520,454
<b>DEFERRED INFLOWS OF RESOURCES</b>		
Deferred inflows of resources related to pensions	671,167	986,678
Deferred inflows of resources related to OPEB	720,112	285,812
<b>TOTAL DEFERRED INFLOWS OF RESOURCES</b>	1,391,279	1,272,490
<b>NET POSITION</b>		
Net investment in capital assets	291,816,714	290,547,253
Restricted	32,155,789	20,211,812
Unrestricted	16,034,665	9,679,375
<b>TOTAL NET POSITION</b>	340,007,168	320,438,440
<b>TOTAL LIABILITIES, DEFERRED INFLOWS OF RESOURCES AND NET POSITION</b>	\$ 486,048,962	\$ 463,231,384

See accompanying notes to financial statements.

**Department of Water Supply  
County of Maui  
STATEMENTS OF REVENUES, EXPENSES, AND CHANGES IN NET POSITION  
Fiscal Years Ended June 30, 2019 and 2018**

	<u>2019</u>	<u>2018</u>
<b>OPERATING REVENUES</b>		
Water sales	\$ 63,672,230	\$ 63,352,395
Other revenues	<u>788,221</u>	<u>944,997</u>
Total operating revenues	<u>64,460,451</u>	<u>64,297,392</u>
<b>OPERATING EXPENSES</b>		
Administrative and general	17,203,664	19,763,706
Depreciation and amortization	15,867,467	15,043,935
Power and pumping	12,640,326	11,455,472
Transmission and distribution	7,635,342	7,063,206
Purification	6,724,199	6,540,239
Customers' accounting and collection	1,619,674	2,183,997
Source of supply	<u>621,098</u>	<u>484,003</u>
Total operating expenses	<u>62,311,770</u>	<u>62,534,558</u>
Operating income	<u>2,148,681</u>	<u>1,762,834</u>
<b>NONOPERATING INCOME (EXPENSES)</b>		
Interest expense, net of interest capitalized of \$-0- for 2019 and \$122,234 for 2018	(1,239,270)	(902,414)
Interest and investment income (losses)	3,908,681	(220,030)
Other income	<u>474,554</u>	<u>--</u>
Total nonoperating income (expenses)	<u>3,143,965</u>	<u>(1,122,444)</u>
Income before capital contributions	5,292,646	640,390
Capital contributions	<u>14,276,082</u>	<u>11,865,652</u>
Change in net position	19,568,728	12,506,042
<b>NET POSITION</b>		
Beginning of year	<u>320,438,440</u>	<u>307,932,398</u>
End of year	\$ <u>340,007,168</u>	\$ <u>320,438,440</u>

See accompanying notes to financial statements.

**Department of Water Supply  
County of Maui  
STATEMENTS OF CASH FLOWS  
Fiscal Years Ended June 30, 2019 and 2018**

	<u>2019</u>	<u>2018</u>
<b>CASH FLOWS FROM OPERATING ACTIVITIES</b>		
Cash received from customers and others	\$ 64,254,052	\$ 63,863,909
Payments to suppliers for goods and services	(25,310,594)	(26,655,016)
Payments to employees for services	(19,038,021)	(18,411,425)
Utility construction advances (refunds)	206,057	(13,966)
Net cash provided by operating activities	<u>20,111,494</u>	<u>18,783,502</u>
<b>CASH FLOWS FROM INVESTING ACTIVITIES</b>		
Interest and investment income (losses) received from investments	<u>3,908,681</u>	<u>(220,030)</u>
Net cash provided by (used in) investing activities	<u>3,908,681</u>	<u>(220,030)</u>
<b>CASH FLOWS FROM CAPITAL AND RELATED FINANCING ACTIVITIES</b>		
Cash paid for acquisition of construction of capital assets, including capitalized interest	(13,379,474)	(23,235,635)
Principal paid on bonds and notes payable	(8,512,692)	(3,845,158)
Proceeds from bonds and notes payable	9,830,336	18,352,460
Cash received from capital contributions and other	10,098,731	4,384,687
Interest paid on bonds and notes payable	<u>(1,557,133)</u>	<u>(1,472,906)</u>
Net cash used in capital and related financing activities	<u>(3,520,232)</u>	<u>(5,816,552)</u>
<b>NET INCREASE IN CASH AND CASH EQUIVALENTS</b>	20,499,943	12,746,920
<b>CASH AND CASH EQUIVALENTS AT BEGINNING OF FISCAL YEAR</b>	<u>85,256,091</u>	<u>72,509,171</u>
<b>CASH AND CASH EQUIVALENTS AT END OF FISCAL YEAR</b>	<u>\$ 105,756,034</u>	<u>\$ 85,256,091</u>
<b>RECONCILIATION OF CASH AND CASH EQUIVALENTS TO THE STATEMENT OF NET POSITION</b>		
Unrestricted	\$ 70,510,717	\$ 62,131,066
Restricted	<u>35,245,317</u>	<u>23,125,025</u>
	<u>\$ 105,756,034</u>	<u>\$ 85,256,091</u>

See accompanying notes to financial statements.



**Department of Water Supply  
County of Maui  
STATEMENTS OF CASH FLOWS (Continued)  
Fiscal Years Ended June 30, 2019 and 2018**

	2019	2018
<b>RECONCILIATION OF OPERATING INCOME TO NET CASH PROVIDED BY OPERATING ACTIVITIES</b>		
Operating income	\$ 2,148,681	\$ 1,762,834
Adjustments to reconcile operating income to net cash provided by operating activities:		
Depreciation and amortization	15,867,467	15,043,935
Provision for doubtful accounts	26,162	92,497
Loss on disposal	--	2,392
Changes in assets, deferred outflows, liabilities and deferred inflows:		
Customer receivables	(206,750)	(564,113)
Materials and supplies	24,546	(163,722)
Other current assets	(11,158)	1,353,581
Deferred outflows of resources related to pensions	920,724	2,744,247
Deferred outflows of resources related to OPEB	(923,531)	(114,543)
Accounts and construction contracts payable	802,767	(100,412)
Claims and judgments	(331,153)	(832,625)
Other liabilities and deposits	22,183	(312,936)
Net pension liability	1,786,242	119,756
Net OPEB liability	(133,475)	(230,009)
Deferred inflows of resources related to pensions	(315,511)	(303,192)
Deferred inflows of resources related to OPEB	434,300	285,812
Net cash provided by operating activities	\$ 20,111,494	\$ 18,783,502
<b>SUPPLEMENTAL DISCLOSURE OF NONCASH CAPITAL AND RELATED FINANCING ACTIVITIES</b>		
Capital contributions	\$ 4,651,905	\$ 7,480,965
Amortization of deferred loss on refunding	\$ 16,284	\$ 25,309
Amortization of deferred gain on refunding	\$ --	\$ 180,272
Amortization of bond premium	\$ 343,011	\$ 364,292

See accompanying notes to financial statements.

**Department of Water Supply  
County of Maui  
NOTES TO FINANCIAL STATEMENTS  
June 30, 2019 and 2018**

**NOTE 1 - ORGANIZATION AND SUMMARY OF SIGNIFICANT ACCOUNTING POLICIES**

- (1) **Organization** - The Department of Water Supply (the Department) operates as a proprietary fund in the County of Maui, State of Hawaii (the County), to develop adequate water sources, storage, and transmission for both urban and agricultural uses for the County. The County Charter amendment (effective January 2, 2003) provides the following:
- The Department is a regular County of Maui agency subject to the Mayor's executive management and Council's legislative oversight.
  - The current Board of Directors of the Department is an advisory body (with power to recommend budget proposals and rate adjustments).
  - The Mayor has the power to appoint the Director (with approval of Council).
  - The Department has the responsibility to survey public and private water sources.
  - The Department must prepare and annually update a long-range capital improvement plan (subject to Council approval) and implement such approved plans. The Council has the power to issue general obligation bonds and provide appropriations for capital improvements of the water system.
- (2) **Financial Statement Presentation** - The Department is a proprietary type fund of the County (the primary government). The accompanying financial statements present only the financial position and activities of the Department, and do not purport to, and do not, present the financial position of the County, the changes in financial position, or its cash flows in conformity with accounting principles generally accepted in the United States of America (GAAP).
- (3) **Measurement Focus and Basis of Accounting** - The accompanying financial statements are presented using the economic resources measurement focus and the accrual basis of accounting. Under this method, revenues are recorded when earned and expenses are recorded at the time liabilities are incurred.
- (4) **Use of Estimates** - The preparation of financial statements in accordance with GAAP requires management to make estimates and assumptions that affect the reported amounts of assets, deferred outflows of resources, liabilities, deferred inflows of resources, and disclosure of contingent assets and liabilities at the date of the financial statements and the reported amounts of revenues and expenses during the reporting period. Significant items subject to such estimates and assumptions include the carrying amount of capital assets, valuation allowances of receivables, accrued workers' compensation, and pension and post-retirement benefits. Actual results could differ from those estimates.
- (5) **Cash Equivalents** - For purposes of the statements of cash flows, the Department considers all equity in pooled cash and investments held in the County's Treasury (including restricted assets) to be cash equivalents.

**Department of Water Supply  
County of Maui  
NOTES TO FINANCIAL STATEMENTS  
June 30, 2019 and 2018**

**NOTE 1 - ORGANIZATION AND SUMMARY OF SIGNIFICANT ACCOUNTING POLICIES  
(Continued)**

- (6) **Cash and Investments** - The Department's cash and investments are maintained in an investment pool with the County's Treasury. The Department's share of the pooled cash and investments and income and losses arising from the investment activity of the pool are allocated to the Department based on the percentage of the Department's total cash and investment balance to the total cash and investments maintained by the County's Treasury.

Investments in negotiable time certificates of deposits and repurchase agreements are carried at cost, which approximates fair value. Investments in U.S. Treasury, U.S. government agencies obligations, municipal securities, and commercial paper are reported at fair value.

- (7) **Customer Receivables and Allowance for Doubtful Accounts** - Customer receivables are net of an allowance for doubtful accounts. The Department considers accounts delinquent once they have reached 31 days past due. Management charges off uncollectible customer receivables to expense and turns over delinquent accounts for collection when it is determined the amounts will not be realized. The allowance for doubtful accounts is based on the Department's prior experience of collections.
- (8) **Materials and Supplies** - Materials and supplies are stated at weighted average cost (which approximates the first-in, first-out method). The cost of materials and supplies are recorded as expenses when consumed rather than when purchased.
- (9) **Restricted Assets** - Funds received by the Department, which are refundable or restricted as to use, are recorded as restricted assets.
- (10) **Capital Assets** - Utility plant in service is stated at cost and include contributions by governmental agencies, private developers, and customers at their cost or estimated cost. Capital assets include individual assets or group of similar assets with an initial cost of more than \$5,000 and an estimated useful life in excess of one year.

Major replacements, renewals and betterments are capitalized. Maintenance, repairs, and replacements that do not improve or extend lives of the assets are charged to expense. Gains or losses resulting from the sale, retirement, or disposal of utility plant are charged or credited to operations.

Depreciation is computed over the estimated useful lives of the individual assets using the straight-line method. The estimated useful lives of the utility plant's capital assets are as follows:

Buildings and systems	10 - 50 years
Machinery and equipment	5 - 50 years
Other	5 - 50 years

- (11) **Debt Premium and Discounts** - Debt premium and discounts arising from the issuance of debt securities are amortized over the terms of the related issues on the bonds outstanding method. Amortization of debt premiums is recorded as a reduction of interest expense.

Department of Water Supply  
County of Maui  
NOTES TO FINANCIAL STATEMENTS  
June 30, 2019 and 2018

**NOTE 1 - ORGANIZATION AND SUMMARY OF SIGNIFICANT ACCOUNTING POLICIES**  
(Continued)

- (12) **Deferred Amounts on Advance Refunding** - For advance refunding resulting in defeasance of debt, the difference between the reacquisition price and the carrying amount of the old debt is deferred. This amount is amortized as a component of interest expense using the bonds outstanding method over the remaining life of the old debt or the life of the new, whichever is shorter. The amount deferred is reported as a deferred inflow or outflow of resources.
- (13) **Compensated Absences** - Employees earn vacation benefits at one and three-quarters working days for each month of service. Each employee is allowed to accumulate a maximum of 90 days of vacation as of the end of the calendar year. Unused vacation benefits are converted to pay upon termination of employment. Employees earn compensatory time off at the rate of one and a half hours for each hour of overtime worked. Unused compensatory time off is converted to pay upon termination of employment.
- (14) **Deferred Outflows of Resources and Deferred Inflows of Resources** - Deferred outflows of resources represent a consumption of net position that applies to a future period and will not be recognized as an outflow of resources (expense or expenditure) until that time. Deferred inflows of resources represent an acquisition of net position that applies to a future period and will not be recognized as an inflow of resources (revenue) until that time.
- (15) **Net Position** - Net position represents the difference between assets and deferred outflows of resources less liabilities and deferred inflows of resources. The three components of net position are defined as follows:
- *Net investment in capital assets* - This component of net position consists of capital assets, net of accumulated depreciation, and reduced by the outstanding balances of any bonds, mortgages, notes, or other borrowings that are attributable to the acquisition, construction, or improvement of those assets. If there are any significant unspent related debt proceeds at fiscal year-end, the portion of the debt attributable to the unspent proceeds are not included in the calculation of net investment in capital assets. Rather, that portion of debt is included in the same net position component as the unspent proceeds.
  - *Restricted* - This component of net position consists of constraints placed on net position use through external constraints imposed by creditors (such as through debt covenants), grantors, contributors, or laws or regulations of other governments or constraints imposed by law through constitutional provisions or enabling legislation. The Department's policy is generally to use restricted net position first, as appropriate opportunities arise.
  - *Unrestricted* - This component of net position consists of net position that does not meet the definition of "restricted" or "net investment in capital assets."
- (16) **Operating Revenues and Expenses** - Revenues and expenses are distinguished between operating and non-operating.

Department of Water Supply  
County of Maui  
NOTES TO FINANCIAL STATEMENTS  
June 30, 2019 and 2018

**NOTE 1 - ORGANIZATION AND SUMMARY OF SIGNIFICANT ACCOUNTING POLICIES  
(Continued)**

- Operating Revenues - Operating revenues generally result from providing goods and services in connection with the Department's principal ongoing operations. The principal operating revenues of the Department are fees for water service.

The Department's policy is to bill customers on a monthly basis for water usage. An estimated accrual for unbilled water revenues to the end of the fiscal period is made based on prorated actual usage from the first meter reading date subsequent to June 30th.

- Operating Expenses - Operating expenses include the costs associated with production, treatment, and transmission of water, including administrative expenses and depreciation on capital assets.

All revenues and expenses not meeting these definitions are reported as non-operating revenues and expenses.

- (17) **Water System Development Fee** - A water system development fee is levied against all new developments requiring water from the Department's systems, except those developments that have paid for and installed a complete water system, including source, transmission, and daily storage facilities. The amounts collected, net of costs incurred for water credits used to acquire additional water supply, are recorded as capital contributions.
- (18) **Capital Contributions** - The Department receives Federal and State of Hawaii grants to pay for portions of construction costs related to various capital projects. The Department also receives development fees and dedications of infrastructure assets for various developments. The amounts received are recorded as capital contributions in the accompanying statements of revenues, expenses, and changes in net position.
- (19) **Pensions** - For purposes of measuring the net pension liability, deferred outflows of resources and deferred inflows of resources related to pensions and pension expense, information about the fiduciary net position of the Employees' Retirement System of the State of Hawaii (ERS) and additions to/deductions from the ERS's fiduciary net position have been determined on the same basis as they are reported by the ERS. For this purpose, employer and employee contributions are recognized in the period in which the contributions are legally due and benefit payments (including refunds of employee contributions) are recognized when due and payable in accordance with benefit terms. Investments are reported at their fair value.
- (20) **Postemployment Benefits Other Than Pensions ("OPEB")** - For purposes of measuring the net OPEB liability, deferred outflows of resources and deferred inflows of resources related to OPEB, and OPEB expense, information about the fiduciary net position of the Hawaii Employer-Union Health Benefits Trust Fund ("EUTF") and additions to/deductions from EUTF's fiduciary net position have been determined on

Department of Water Supply  
County of Maui  
**NOTES TO FINANCIAL STATEMENTS**  
June 30, 2019 and 2018

**NOTE 1 - ORGANIZATION AND SUMMARY OF SIGNIFICANT ACCOUNTING POLICIES**  
(Continued)

the same basis as they are reported by EUTF. For this purpose, EUTF recognizes benefit payments when due and payable in accordance with the benefit terms. Investments are reported at fair value, except for investments in commingled and money market funds, which are reported at net asset value (NAV). The NAV is based on the fair value of the underlying assets held by the respective fund less its liabilities.

- (21) ***New Accounting Pronouncements*** - The Government Accounting Standards Board (the "GASB") issued Statement No. 83, *Certain Asset Retirement Obligations*. This Statement addresses accounting and financial reporting for certain asset retirement obligations ("AROs"). An ARO is a legally enforceable liability associated with the retirement of a tangible capital asset. A government that has legal obligations to perform future asset retirement activities related to its tangible capital assets should recognize a liability based on the guidance in this Statement. The requirements of this Statement are effective for reporting periods beginning after June 15, 2018. Management has determined that this statement does not have a material impact on the Department's financial statements.

The GASB issued Statement No. 84, *Fiduciary Activities*. This Statement establishes specific criteria for identifying activities that should be reported as fiduciary activities and clarifies whether and how business-type activities should report their fiduciary activities. The requirements of this Statement are effective for reporting periods beginning after December 15, 2018. Management has determined that this Statement does not have a material impact on the Department's financial statements.

The GASB issued Statement No. 87, *Leases*. This Statement requires the recognition of certain lease assets and liabilities for leases that previously were classified as operating leases and recognized as inflows of resources or outflows of resources based on the payment provisions of the contract. It establishes a single model for lease accounting based on the foundational principle that leases are financings of the right to use an underlying asset. Under this Statement, a lessee is required to recognize a lease liability and an intangible right-to-use lease asset, and a lessor is required to recognize a lease receivable and a deferred inflow of resources. The requirements of this Statement are effective for reporting periods beginning after December 15, 2019. Management has not yet determined the effect this Statement will have on the Department's financial statements.

The GASB issued Statement No. 88, *Certain Disclosures Related to Debt, including Direct Borrowings and Direct Placements*. This Statement defines debt for purposes of disclosure in notes to financial statements and establishes additional financial statement note disclosure requirements related to debt obligations of governments, including direct borrowings (for example, a government entering into a loan agreement with a lender) and direct placements (for example, a government issuing a debt security directly to an investor). Direct borrowings and direct placements have terms negotiated directly with the investor or lender and are not offered for public sale. The requirements of this Statement are effective for reporting periods beginning after June 15, 2018. Management has adopted the applicable requirements of this new standard as presented in the Department's financial statements.

**Department of Water Supply**  
**County of Maui**  
**NOTES TO FINANCIAL STATEMENTS**  
**June 30, 2019 and 2018**

**NOTE 1 - ORGANIZATION AND SUMMARY OF SIGNIFICANT ACCOUNTING POLICIES**  
**(Continued)**

The GASB issued Statement No. 89, *Accounting for Interest Cost Incurred before the End of a Construction Period*. This Statement requires that interest cost incurred before the end of a construction period be recognized as an expense in the period in which the cost is incurred for financial statements prepared using the economic resources measurement focus. As a result, interest cost incurred before the end of a construction period will not be included in the historical cost of a capital asset reported in a business-type activity or enterprise fund. The requirements of this Statement are effective for reporting periods beginning after December 15, 2019. Changes adopted to conform to the provisions of this Statement should be applied prospectively. Management has adopted the applicable requirements of this new standard as presented in the Department's financial statements.

The GASB issued Statement No. 90, *Majority Equity Interests - an amendment of GASB Statements No. 14 and No. 61*. The primary objectives of this Statement are to improve the consistency and comparability of reporting a government's majority equity interest in a legally separate organization and to improve the relevance of financial statement information for certain component units. It defines a majority equity interest and specifies that a majority equity interest in a legally separate organization should be reported as an investment if a government's holding of the equity interest meets the definition of an investment. The requirements of this Statement are effective for reporting periods beginning after December 15, 2018. Management has not yet determined the effect this Statement will have on the Department's financial statements.

The GASB issued Statement No. 91, *Conduit Debt Obligations*. The primary objectives of this Statement are to provide a single method of reporting conduit debt obligations by issuers and eliminate diversity in practice associated with (1) commitments extended by issuers, (2) arrangements associated with conduit debt obligations, and (3) related note disclosures. This Statement achieves those objectives by clarifying the existing definition of a conduit debt obligation; establishing that a conduit debt obligation is not a liability of the issuer; establishing standards for accounting and financial reporting of additional commitments and voluntary commitments extended by issuers and arrangements associated with conduit debt obligations; and improving required note disclosures. The requirements of this Statement are effective for reporting periods beginning after December 15, 2020. Management has not yet determined the effect this Statement will have on the Department's financial statements.

**NOTE 2 - CASH AND INVESTMENTS**

The Department's cash and investments are maintained with the County's Treasury in a cash and investment pool available for use by all of the County's funds. At June 30, 2019, and 2018, the amounts reported on the statements of net position as equity in pooled cash and investments held in County Treasury represents the Department's relative position in the County's cash and investment pool and amounted to \$105,756,034 and \$85,256,091, respectively.

**Department of Water Supply**  
**County of Maui**  
**NOTES TO FINANCIAL STATEMENTS**  
**June 30, 2019 and 2018**

**NOTE 2 - CASH AND INVESTMENTS (Continued)**

**County's Investment Policy**

The County's investment policy conforms with the State of Hawaii statutes (Chapter 46, Section 50), which authorize the County to invest in obligations of the U.S. Treasury and U.S. government agencies, municipal securities, auction rate securities collateralized by student loans, bank repurchase agreements, commercial paper, banker's acceptances, and money market funds.

Specific requirements under the County's investment policy are as follows:

- With the exception of U.S. Treasury securities and bank certificates of deposit fully insured by the Federal Deposit Insurance Corporation (FDIC) not to exceed \$250,000 per banking institution, no more than 30% of the County's investment portfolio will be invested in a single type of security, a single issuer, or financial institution.
- Investment maturities are not to exceed five years.

**Investment Risk** - The investments are subject to certain types of risk, including interest rate risk, credit quality risk, concentration of credit risk, and custodial credit risk.

**Interest Rate Risk** - Interest rate risk is the risk that changes in interest rates will adversely affect the fair value of an investment. The County has a formal investment policy that follows State of Hawaii statutes, which limits investment maturities to five years as a means of managing its exposure to fair value losses arising from increasing interest rates.

**Credit Quality Risk** - Credit risk is the risk that an issuer or counterparty to an investment will not fulfill its obligation. The County's investment policy limits investments in municipal securities, U.S. Treasury securities, negotiable time certificates of deposits, U.S. government agency obligations, repurchase agreements, commercial paper, bankers' acceptances, money market funds, and auction rate securities collateralized by student loans maintaining Triple-A rating. The bond ratings for the County's investments in U.S. agency obligations (government sponsored enterprises) at June 30, 2019 and 2018 were as follows:

	2019	2018
AA+	\$ 238,841,727	\$ 171,781,995
AA	16,357,625	4,210,742
Not rated	30,123,065	33,212,686
	\$ 285,322,417	\$ 209,205,423

**Concentration of Credit Risk** - Concentration of credit risk is the risk of loss attributable to the magnitude of the County's investments in a single issuer or investment. The County diversifies its investments to minimize such risk and with the exception of U.S. Treasury securities, no more than 30% of the investment portfolio can be invested in a single type of security or financial institution.



**Department of Water Supply  
County of Maui  
NOTES TO FINANCIAL STATEMENTS  
June 30, 2019 and 2018**

**NOTE 2 - CASH AND INVESTMENTS (Continued)**

**Custodial Credit Risk** - Custodial credit risk is the risk that in the event of failure of the counterparty to an investment, the County would not be able to recover the value of investment or collateral securities that are in the possession of an outside party. All of the County's investments are either insured or held by an agent in the name of the County, including the investment collateral underlying the repurchase agreements.

Custodial credit risk for bank depository accounts is the risk that in the event of a bank failure, the County's deposits may not be returned. It is the County's policy to place its bank deposits with State of Hawaii high credit quality financial institutions that are able to meet the collateral requirements for the County's deposits. As of June 30, 2019 and 2018, substantially all of the County's negotiable time certificates of deposits and cash deposits were insured and collateralized.

**Pooled Cash and Investments Held in County Treasury**

Information relating to individual bank balances, insurance, and collateral of cash deposits is determined on a county-wide basis and not for individual departments and funds. Information regarding the carrying amount and corresponding bank balances of the County's cash and investment pool and collateralization of those balances is included in the County's comprehensive annual financial report.

The Department's share of the County's cash and investment pool, as summarized in the tables below was approximately 21.6% and 24.6% at June 30, 2019, and 2018, respectively.

As of June 30, 2019, the County and fiduciary fund's cash and investments were as follows:

Type of Investment	% Yield	Maturity				Premiums (Discounts)	Fair Value
		Under 30 Days	31 - 180 Days	181 - 365 Days	1 - 5 Years		
Federal National Mortgage Association Coupon Notes	1.21 - 1.84	\$ --	\$ 7,595,000	\$ 4,000,000	\$ 14,970,000	\$ (102,252)	\$ 26,462,748
Federal Home Loan Bank Bank Notes	1.40 - 3.30	--	2,000,000	11,500,000	70,500,000	492,040	84,492,040
Federal Farm Credit Bank Notes	1.88 - 3.05	--	--	--	76,223,000	1,828,090	78,051,090
Federal Agricultural Mortgage Corporation Notes	2.40 - 2.55	--	--	--	7,000,000	112,140	7,112,140
Federal Home Loan Mortgage Corporation Notes	1.08 - 2.55	2,000,000	2,000,000	--	39,030,000	178,775	43,208,775
Tennessee Valley Authority Notes	2.33 - 2.72	--	--	1,000,000	5,000,000	159,800	6,159,800
U.S. Treasury Strips	1.94	--	--	--	2,000,000	(99,460)	1,900,540
U.S. Treasury Notes	1.78 - 3.04	--	3,500,000	5,000,000	6,000,000	(42,915)	14,457,085
Municipal Securities	1.25 - 3.26	570,000	8,325,000	--	14,430,000	153,199	23,478,199
Negotiable certificates of deposit	0.10 - 3.50	<u>1,000,000</u>	<u>6,750,000</u>	<u>13,450,000</u>	<u>43,190,000</u>	<u>152,553</u>	<u>64,542,553</u>
<b>Total investments</b>		<b>\$ <u>3,570,000</u></b>	<b>\$ <u>30,170,000</u></b>	<b>\$ <u>34,950,000</u></b>	<b>\$ <u>278,343,000</u></b>	<b>\$ <u>2,831,970</u></b>	<b>349,864,970</b>
						Cash on hand and deposits	<u>138,908,976</u>
						<b>Total equity in pooled cash and investments</b>	<b>\$ <u>488,773,946</u></b>

**Department of Water Supply  
County of Maui  
NOTES TO FINANCIAL STATEMENTS  
June 30, 2019 and 2018**

**NOTE 2 - CASH AND INVESTMENTS (Continued)**

As of June 30, 2018, the County and fiduciary fund's cash and investments were as follows:

Type of Investment	% Yield	Maturity				Premiums (Discounts)	Fair Value
		Under 30 Days	31 - 180 Days	181 - 365 Days	1 - 5 Years		
Federal National Mortgage Association Coupon Notes	1.21 - 1.84	\$ --	\$ 1,000,000	\$ 6,000,000	\$ 26,565,000	\$ (761,602)	\$ 32,803,398
Federal Home Loan Bank Bank Notes	0.95 - 3.13	--	4,000,000	3,000,000	60,500,000	(1,585,920)	65,914,080
Federal Farm Credit Bank Notes	2.15 - 2.75	--	--	--	8,985,000	(75,375)	8,909,625
Federal Agricultural Mortgage Corporation Notes	3.07	--	--	--	5,000,000	(45,900)	4,954,100
Federal Home Loan Mortgage Corporation Notes	1.20 - 3.30	--	--	9,500,000	53,030,000	(1,161,317)	61,368,683
Tennessee Valley Authority Notes	2.33	--	--	--	1,000,000	(5,840)	994,160
U.S. Treasury Strips	1.41 - 1.94	--	3,000,000	--	2,000,000	(207,110)	4,792,890
U.S. Treasury Notes	1.78 - 2.53	--	--	--	4,000,000	(150,840)	3,849,160
Municipal Securities	1.25 - 2.26	1,840,000	5,825,000	--	18,145,000	(190,673)	25,619,327
Negotiable certificates of deposit	0.10 - 2.95	<u>18,498,000</u>	<u>7,500,000</u>	<u>13,493,000</u>	<u>56,680,000</u>	<u>(1,680,480)</u>	<u>94,490,520</u>
Total investments		\$ <u>20,338,000</u>	\$ <u>21,325,000</u>	\$ <u>31,993,000</u>	\$ <u>235,905,000</u>	\$ <u>(5,865,057)</u>	303,695,943
					Cash on hand and deposits		<u>43,551,274</u>
					Total equity in pooled cash and investments		\$ <u>347,247,217</u>

Unrestricted equity in pooled cash and investments held in County Treasury at June 30, 2019 and 2018 include funds for the following purposes:

	<u>2019</u>	<u>2018</u>
Board-designated		
Capital improvements	\$ 25,003,684	\$ 22,660,639
Debt service	<u>2,512,154</u>	<u>1,824,158</u>
Total board-designated	27,515,838	24,484,797
Undesignated	<u>42,994,879</u>	<u>37,646,269</u>
Total	\$ <u>70,510,717</u>	\$ <u>62,131,066</u>

At June 30, 2019 and 2018, construction contract payables, including retentions, to be paid with board-designated funds were approximately \$1.1 million and \$200,000, respectively. Construction contract commitments as of June 30, 2019 and 2018, to be paid with board-designated funds, aggregated approximately \$10.4 million and 4.6 million, respectively. There are no amounts included in the construction contract commitment amounts for 2019 and 2018 for maintenance of compliance-order projects and no amounts included for management's estimates needed in anticipation of future regulations for compliance.

**Department of Water Supply  
County of Maui  
NOTES TO FINANCIAL STATEMENTS  
June 30, 2019 and 2018**

**NOTE 2 - CASH AND INVESTMENTS (Continued)**

Restricted equity in pooled cash and investments held in County Treasury consisted of the following at June 30, 2019 and 2018:

	<u>2019</u>	<u>2018</u>
Water system development fee	\$ 20,433,487	\$ 13,231,669
State funds	11,183,829	6,440,718
Bond funds	2,403,368	2,306,902
Customer deposits	758,279	677,428
Special assessment fund for storage	273,829	273,829
Source development fund assessments	192,525	192,525
Federal funds	<u>          --</u>	<u>          1,954</u>
Total	<u>\$ 35,245,317</u>	<u>\$ 23,125,025</u>

At June 30, 2019, and 2018 construction voucher and contract payables, including retentions, to be paid with restricted assets were approximately \$500,000 and \$1.8 million, respectively. Construction contract commitments as of June 30, 2019 and 2018, to be paid with restricted assets, aggregated approximately \$7.4 million and 11.2 million, respectively.

**NOTE 3 - FAIR VALUE MEASUREMENTS**

The framework for measuring fair value provides a fair value hierarchy that prioritizes the inputs to valuation techniques used to measure fair value. The hierarchy gives the highest priority to unadjusted quoted prices in active markets for identical assets or liabilities (level 1) and the lowest priority to unobservable inputs (level 3). The three levels of the fair value hierarchy are described as follows:

**Level 1** - Inputs are quoted prices (unadjusted) in active markets for identical assets or liabilities that a government can access at the measurement date. An active market is a market in which transactions for the asset or liability take place with sufficient frequency and volume to provide pricing information on an ongoing basis.

**Level 2** - Inputs other than quoted prices included within level 1 that are observable for an asset or liability, either directly or indirectly. If the asset or liability has a specified (contractual) term, a level 2 input must be observable for most of the full term of the asset or liability. Level 2 inputs include:

- Quoted prices for similar assets or liabilities in active markets,
- Quoted prices for identical or similar assets or liabilities in markets that are not active,
- Inputs other than quoted prices that are observable for the asset or liability,
- Inputs that are derived principally from or corroborated by observable market data by correlation or other means.

**Department of Water Supply  
County of Maui  
NOTES TO FINANCIAL STATEMENTS  
June 30, 2019 and 2018**

**NOTE 3 - FAIR VALUE MEASUREMENTS (Continued)**

**Level 3** - Inputs are unobservable for an asset or liability.

Following is a description of the valuation techniques used by the County to measure fair value:

U.S. Treasury obligations: Valued using quoted prices in active markets for identical assets.

U.S. government agency obligations and municipal securities: Valued using quoted prices for identical or similar assets in markets that are not active.

Negotiable certificates of deposit: Valued using quoted prices in markets that are not active or for which all significant inputs are observable, either directly or indirectly.

The following table sets forth by level, within the fair value hierarchy, assets measured at fair value on a recurring basis as of June 30, 2019 and 2018:

	Assets at Fair Value at June 30, 2019			
	Total	Level 1	Level 2	Level 3
U. S. Treasury obligations	\$ 16,357,625	\$ 16,357,625	\$ --	\$ --
U. S. government agency obligations	245,486,593	--	245,486,593	--
Municipal securities	23,478,199	--	23,478,199	--
Negotiable certificates of deposit	<u>64,542,553</u>	<u>--</u>	<u>64,542,553</u>	<u>--</u>
	<u>\$ 349,864,970</u>	<u>\$ 16,357,625</u>	<u>\$ 333,507,345</u>	<u>\$ --</u>

	Assets at Fair Value at June 30, 2018			
	Total	Level 1	Level 2	Level 3
U. S. Treasury obligations	\$ 8,642,050	\$ 8,642,050	\$ --	\$ --
U. S. government agency obligations	174,944,046	--	174,944,046	--
Municipal securities	25,619,327	--	25,619,327	--
Negotiable certificates of deposit	<u>94,490,520</u>	<u>--</u>	<u>94,490,520</u>	<u>--</u>
	<u>\$ 303,695,943</u>	<u>\$ 8,642,050</u>	<u>\$ 295,053,893</u>	<u>\$ --</u>

**Department of Water Supply  
County of Maui  
NOTES TO FINANCIAL STATEMENTS  
June 30, 2019 and 2018**

**NOTE 4 - RESTRICTED NET POSITION**

At June 30, 2019 and 2018, restricted net position consisted of the following:

	<u>2019</u>	<u>2018</u>
Water system development fee	\$ 20,433,487	\$ 13,231,669
Special assessment fund for storage	273,829	273,829
Source development fund assessments	192,525	192,525
Other restricted funds	<u>11,255,948</u>	<u>6,513,789</u>
Total	\$ <u>32,155,789</u>	\$ <u>20,211,812</u>

**NOTE 5 - CAPITAL CONTRIBUTIONS**

Capital contributions during the fiscal years ended June 30, 2019, and 2018 were as follows:

	<u>2019</u>	<u>2018</u>
Dedication of infrastructure assets	\$ 4,651,905	\$ 7,480,965
Source development fund assessments	8,429,220	3,956,336
Other	<u>1,194,957</u>	<u>428,351</u>
Total	\$ <u>14,276,082</u>	\$ <u>11,865,652</u>

**Department of Water Supply  
County of Maui  
NOTES TO FINANCIAL STATEMENTS  
June 30, 2019 and 2018**

**NOTE 6 - CAPITAL ASSETS**

Capital assets activity during the fiscal year ended June 30, 2019, was as follows:

	Balance July 1, 2018	Additions	Reductions/ Retirements	Balance June 30, 2019
Non-depreciable assets				
Land	\$ 7,905,059	\$ --	\$ --	\$ 7,905,059
Construction in progress	<u>48,842,240</u>	<u>11,878,768</u>	<u>(26,302,217)</u>	<u>34,418,791</u>
	<u>56,747,299</u>	<u>11,878,768</u>	<u>(26,302,217)</u>	<u>42,323,850</u>
Depreciable assets				
Buildings and systems	165,974,212	11,580,688	--	177,554,900
Machinery and equipment	424,277,276	20,738,890	(15,541)	445,000,625
Infrastructure	<u>11,791,972</u>	<u>135,250</u>	<u>--</u>	<u>11,927,222</u>
	<u>602,043,460</u>	<u>32,454,828</u>	<u>(15,541)</u>	<u>634,482,747</u>
Accumulated depreciation				
Buildings and systems	75,767,687	3,933,686	--	79,701,373
Machinery and equipment	222,271,454	11,699,828	(15,541)	233,955,741
Infrastructure	<u>4,801,843</u>	<u>233,953</u>	<u>--</u>	<u>5,035,796</u>
	<u>302,840,984</u>	<u>15,867,467</u>	<u>(15,541)</u>	<u>318,692,910</u>
Total Capital Assets	\$ <u>355,949,775</u>	\$ <u>28,466,129</u>	\$ <u>(26,302,217)</u>	\$ <u>358,113,687</u>

Capital assets activity during the fiscal year ended June 30, 2018, was as follows:

	Balance July 1, 2017	Additions	Reductions/ Retirements	Balance June 30, 2018
Non-depreciable assets				
Land	\$ 7,905,059	\$ --	\$ --	\$ 7,905,059
Construction in progress	<u>34,854,382</u>	<u>22,003,449</u>	<u>(8,015,591)</u>	<u>48,842,240</u>
	<u>42,759,441</u>	<u>22,003,449</u>	<u>(8,015,591)</u>	<u>56,747,299</u>
Depreciable assets				
Buildings and systems	160,586,707	5,387,505	--	165,974,212
Machinery and equipment	413,301,480	11,141,431	(165,635)	424,277,276
Infrastructure	<u>11,430,692</u>	<u>361,280</u>	<u>--</u>	<u>11,791,972</u>
	<u>585,318,879</u>	<u>16,890,216</u>	<u>(165,635)</u>	<u>602,043,460</u>
Accumulated depreciation				
Buildings and systems	71,955,255	3,812,432	--	75,767,687
Machinery and equipment	211,392,518	11,002,939	(124,003)	222,271,454
Infrastructure	<u>4,573,279</u>	<u>228,564</u>	<u>--</u>	<u>4,801,843</u>
	<u>287,921,052</u>	<u>15,043,935</u>	<u>(124,003)</u>	<u>302,840,984</u>
Total Capital Assets	\$ <u>340,157,268</u>	\$ <u>23,849,730</u>	\$ <u>(8,057,223)</u>	\$ <u>355,949,775</u>

**Department of Water Supply  
County of Maui  
NOTES TO FINANCIAL STATEMENTS  
June 30, 2019 and 2018**

**NOTE 7 - LONG-TERM LIABILITIES**

A summary of changes in long-term liabilities of the Department for the fiscal year ended June 30, 2019, are as follows:

	Balance July 1, 2018	Additions	Reductions	Balance June 30, 2019	Due Within One Year
Bonds payable	\$ 21,719,327	\$ 4,621,644	\$ 2,921,909	\$ 23,419,062	\$ 2,950,708
Notes payable from direct borrowings	46,123,084	5,208,692	5,933,794	45,397,982	2,349,064
Accrued vacation payable	1,865,812	808,309	920,556	1,753,565	865,175
Accrued compensatory time off	125,292	101,377	112,404	114,265	114,265
Claims and judgments	844,093	322,946	654,099	512,940	512,940
Total	<u>\$ 70,677,608</u>	<u>\$ 11,062,968</u>	<u>\$ 10,542,762</u>	<u>\$ 71,197,814</u>	<u>\$ 6,792,152</u>

A summary of changes in long-term liabilities of the Department for the fiscal year ended June 30, 2018, are as follows:

	Balance July 1, 2017	Additions	Reductions	Balance June 30, 2018	Due Within One Year
Bonds payable	\$ 24,530,976	\$ --	\$ 2,811,649	\$ 21,719,327	\$ 2,578,899
Notes payable from direct borrowings	29,168,425	18,352,460	1,397,801	46,123,084	1,602,385
Accrued vacation payable	2,180,906	625,407	940,501	1,865,812	804,619
Accrued compensatory time off	170,868	92,018	137,594	125,292	125,292
Claims and judgments	1,676,718	195,664	1,028,289	844,093	844,093
Total	<u>\$ 57,727,893</u>	<u>\$ 19,265,549</u>	<u>\$ 6,315,834</u>	<u>\$ 70,677,608</u>	<u>\$ 5,955,288</u>

**NOTE 8 - BONDS PAYABLE**

At June 30, 2019 and 2018, bonds payable consisted of the following:

	2019	2018
General Obligation Refunding Bonds, 2010 Series B, due in annual installments through 2021, interest payable semi-annually from 4.0% to 5.0%.	\$ 851,614	\$ 1,253,055
General Obligation Refunding Bonds, 2012 Series B, due in annual installments through 2032, interest payable semi-annually from 2.1% to 5.0%.	3,073,430	3,251,432
General Obligation Refunding Bonds, 2012 Series C, due in annual installments through 2023, interest payable semi-annually from 4.0% to 5.0%.	<u>4,050,000</u>	<u>4,945,000</u>
Balance forward	<u>\$ 7,975,044</u>	<u>\$ 9,449,487</u>

**Department of Water Supply  
County of Maui  
NOTES TO FINANCIAL STATEMENTS  
June 30, 2019 and 2018**

**NOTE 8 - BONDS PAYABLE (Continued)**

	<u>2019</u>	<u>2018</u>
Balance carried forward	\$ 7,975,044	\$ 9,449,487
General Obligation Refunding Bonds, 2014 Series C, due in annual installments through 2034, interest payable semi-annually from 3.0% to 5.0%.	5,570,000	5,830,000
General Obligation Refunding Bonds, 2015 Series B, due in annual installments through 2020, interest payable semi-annually at 5.0%.	575,469	1,123,428
General Obligation Refunding Bonds, 2015 Series D, due in annual installments through 2027, interest payable semi-annually from 3.0% to 5.0%.	2,972,616	3,269,112
General Obligation Refunding Bonds, 2018 Series C, due in annual installments through 2032, interest payable semi-annually from 3.0% to 5.0%.	<u>4,040,000</u>	<u>---</u>
	21,133,129	19,672,027
Less current portion	<u>(2,950,708)</u>	<u>(2,578,899)</u>
	18,182,421	17,093,128
Unamortized premium	<u>2,285,933</u>	<u>2,047,300</u>
Noncurrent portion	\$ <u><u>20,468,354</u></u>	\$ <u><u>19,140,428</u></u>

Future bond principal and interest payments are as follows:

<u>Fiscal Year Ending June 30,</u>	<u>Principal</u>	<u>Interest</u>	<u>Total</u>
2020	\$ 2,950,708	\$ 873,353	\$ 3,824,061
2021	2,472,697	744,104	3,216,801
2022	2,139,184	624,161	2,763,345
2023	2,251,742	516,392	2,768,134
2024	1,213,544	416,165	1,629,709
2025 - 2029	5,936,996	1,317,193	7,254,189
2030 - 2034	<u>4,168,258</u>	<u>343,899</u>	<u>4,512,157</u>
Total	\$ <u><u>21,133,129</u></u>	\$ <u><u>4,835,267</u></u>	\$ <u><u>25,968,396</u></u>

The County issues general obligation bonds for the construction of major capital facilities. The County's general obligation bonds are direct obligations of the County for which its full faith and credit are pledged. A portion of the County's general obligation bonds are designated as reimbursable bonds to be repaid from the net revenues of the Department.



**Department of Water Supply  
County of Maui  
NOTES TO FINANCIAL STATEMENTS  
June 30, 2019 and 2018**

**NOTE 9 - NOTES PAYABLE**

At June 30, 2019 and 2018, notes payable from direct borrowings consisted of the following:

	<u>2019</u>	<u>2018</u>
Notes payable to State of Hawaii, Department of Health		
Note payable to State Revolving Loan Fund for a capital improvement project, payable in semi-annual installments of principal, interest at a rate of 0.37%, and loan fee rate of 3.25%. This note was fully paid off in 2019.	\$ --	\$ 1,028,166
Note payable to State Revolving Loan Fund for a capital improvement project, payable in semi-annual installments of principal, interest at a rate of 0.00%, and loan fee rate of 3.25%. This note was fully paid off in 2019.	--	449,606
Note payable to State Revolving Loan Fund for a capital improvement project, payable in semi-annual installments of principal, interest at a rate of 0.35%, and loan fee rate of 3.25%. This note was fully paid off in 2019.	--	2,422,355
Note payable to State Revolving Loan Fund for a capital improvement project, payable in semi-annual installments of principal, interest at a rate of 0.00%, and loan fee rate of 3.25%. This note was fully paid off in 2019.	--	788,722
Note payable to State Revolving Loan Fund for a capital improvement project, payable in semi-annual installments of principal, interest at a rate of 1.00%, and loan fee rate of 1.00%, maturing in 2032.	164,473	176,267
Note payable to State Revolving Loan Fund for a capital improvement project, payable in semi-annual installments of principal, interest at a rate of 0.50%, and loan fee rate of 1.00%, maturing in 2033.	<u>1,583,611</u>	<u>1,696,779</u>
Balance forward	\$ 1,748,084	\$ 6,561,895

**Department of Water Supply**  
**County of Maui**  
**NOTES TO FINANCIAL STATEMENTS**  
**June 30, 2019 and 2018**

**NOTE 9 - NOTES PAYABLE (Continued)**

	2019	2018
Notes payable to State of Hawaii, Department of Health		
Balance carried forward	\$ 1,748,084	\$ 6,561,895
Note payable to State Revolving Loan Fund for a capital improvement project, payable in semi-annual installments of principal, interest at a rate of 1.00%, and loan fee rate of 1.00%, maturing in 2033.	624,190	665,501
Note payable to State Revolving Loan Fund for a capital improvement project, payable in semi-annual installments of principal, interest at a rate of 0.00%, and loan fee rate of 1.00%, maturing in 2033.	5,774,670	6,187,147
Note payable to State Revolving Loan Fund for a capital improvement project, payable in semi-annual installments of principal, interest at a rate of 0.50%, and loan fee rate of 1.00%, maturing in 2034.	3,242,756	3,457,856
Note payable to State Revolving Loan Fund for a capital improvement project, payable in semi-annual installments of principal, interest at a rate of 1.00%, and loan fee rate of 1.00%, maturing in 2034.	1,581,035	1,678,265
Note payable to State Revolving Loan Fund for a capital improvement project, payable in semi-annual installments of principal, interest at a rate of 1.00%, and loan fee rate of 1.00%, maturing in 2035.	571,708	604,500
Note payable to State Revolving Loan Fund for a capital improvement project, payable in semi-annual installments of principal, interest at a rate of 1.00%, and loan fee rate of 1.00%, maturing in 2035.	623,072	658,813
Balance forward	\$ 14,165,515	\$ 19,813,977

**Department of Water Supply  
County of Maui  
NOTES TO FINANCIAL STATEMENTS  
June 30, 2019 and 2018**

**NOTE 9 - NOTES PAYABLE (Continued)**

	2019	2018
Notes payable to State of Hawaii, Department of Health		
Balance carried forward	\$ 14,165,515	\$ 19,813,977
Note payable to State Revolving Loan Fund for a capital improvement project, payable in semi-annual installments of principal, interest at a rate of 1.00%, and loan fee rate of 1.00%, maturing in 2034.	119,568	127,193
Note payable to State Revolving Loan Fund for a capital improvement project, payable in semi-annual installments of principal, interest at a rate of 1.00%, and loan fee rate of 1.00%, maturing in 2038.	1,711,713	1,693,916
Note payable to State Revolving Loan Fund for a capital improvement project, payable in semi-annual installments of principal, interest at a rate of 0.50%, and loan fee rate of 1.00%, maturing in 2037.	2,084,482	2,184,849
Note payable to State Revolving Loan Fund for a capital improvement project, payable in semi-annual installments of principal, interest at a rate of 1.00%, and loan fee rate of 1.00%, maturing in 2037.	1,125,538	1,177,252
Note payable to State Revolving Loan Fund for a capital improvement project, payable in semi-annual installments of principal, interest at a rate of 1.00%, and loan fee rate of 1.00%, maturing in 2037.	468,979	475,150
Note payable to State Revolving Loan Fund for a capital improvement project, payable in semi-annual installments of principal, interest at a rate of 0.00%, and loan fee rate of 1.00%, maturing in 2039.	<u>20,937,537</u>	<u>17,662,004</u>
Balance forward	\$ 40,613,332	\$ 43,134,341

**Department of Water Supply  
County of Maui  
NOTES TO FINANCIAL STATEMENTS  
June 30, 2019 and 2018**

**NOTE 9 - NOTES PAYABLE (Continued)**

	2019	2018
Notes payable to State of Hawaii, Department of Health		
Balance carried forward	\$ 40,613,332	\$ 43,134,341
Note payable to State Revolving Loan Fund for a capital improvement project, payable in semi-annual installments of principal, interest at a rate of 0.50%, and loan fee rate of 1.00%, maturing in 2038.	3,251,807	2,988,743
Note payable to State Revolving Loan Fund for a capital improvement project, payable in semi-annual installments of principal, interest at a rate of 0.75%, and loan fee rate of 1.00%, maturing in 2041.	1,532,843	--
	45,397,982	46,123,084
Less current portion	(2,349,064)	(1,602,385)
	\$ 43,048,918	\$ 44,520,699

As of June 30, 2019, future principal and interest payments for notes payable from direct borrowings are as follows:

Fiscal Year Ending June 30,	Principal	Interest	Total
2020	\$ 2,349,064	\$ 576,633	\$ 2,925,697
2021	2,369,345	548,340	2,917,685
2022	2,456,621	517,599	2,974,220
2023	2,478,810	485,610	2,964,420
2024	2,501,212	453,368	2,954,580
2025 - 2029	12,853,209	1,770,658	14,623,867
2030 - 2034	12,667,499	916,634	13,584,133
Thereafter	7,722,222	233,488	7,955,710
Total	\$ 45,397,982	\$ 5,502,330	\$ 50,900,312

The Department's notes payable from direct borrowings are direct obligations of the County for which its full faith and credit, including a pledge of the County's general taxing power, as security for the notes payable. Repayments of principal and interest shall be a first charge on the County's General Fund.

**Department of Water Supply  
County of Maui  
NOTES TO FINANCIAL STATEMENTS  
June 30, 2019 and 2018**

**NOTE 10 - RETIREMENT BENEFITS**

**Pension Plan**

***Pension Plan Description*** - Generally, all full-time employees of the State and counties are required to be members of the ERS, a cost-sharing multiple-employer defined benefit pension plan that administers the State's pension benefits program. Benefits, eligibility, and contribution requirements are governed by HRS Chapter 88 and can be amended through legislation. The ERS issues publicly available annual financial reports that can be obtained at ERS' website: <http://www.ers.ehawaii.gov>.

***Benefits Provided*** - The ERS Pension Trust is comprised of three pension classes for membership purposes and considered to be a single plan for accounting purposes since all assets of the ERS may legally be used to pay the benefits of any of the ERS members or beneficiaries. The ERS provides retirement, disability and death benefits with three membership classes known as the noncontributory, contributory and hybrid retirement classes. The three classes provide a monthly retirement allowance equal to the benefit multiplier (generally 1.25% to 2.25%) multiplied by the average final compensation multiplied by years of credited service. Average final compensation for members hired prior to July 1, 2012 is an average of the highest salaries during any three years of credited service, excluding any salary paid in lieu of vacation for members hired January 1, 1971 or later and the average of the highest salaries during any five years of credited service including any salary paid in lieu of vacation for members hired prior to January 1, 1971. For members hired after June 30, 2012, average final compensation is an average of the highest salaries during any five years of credited service excluding any salary paid in lieu of vacation.

Each retiree's original retirement allowance is increased on each July 1 beginning the calendar year after retirement. Retirees first hired as members prior to July 1, 2012 receive a 2.5% increase each year of their original retirement allowance without a ceiling. Retirees first hired as members after June 30, 2012 receive a 1.5% increase each year of their original retirement allowance without a ceiling. The annual increase is not compounded.

The following summarizes the provisions relevant to the largest employee groups of the respective membership class. Retirement benefits for certain groups, such as police officers, firefighters, some investigators, sewer workers, judges, and elected officials, vary from general employees.

**Noncontributory Class**

Retirement Benefits - General employees' retirement benefits are determined as 1.25% of average final compensation multiplied by the years of credited service. Employees with ten years of credited service are eligible to retire at age 62. Employees with 30 years of credited service are eligible to retire at age 55.

**Department of Water Supply  
County of Maui  
NOTES TO FINANCIAL STATEMENTS  
June 30, 2019 and 2018**

**NOTE 10 - RETIREMENT BENEFITS (Continued)**

*Disability Benefits* - Members are eligible for service-related disability benefits regardless of length of service and receive a lifetime pension of 35% of their average final compensation. Ten years of credited service is required for ordinary disability. Ordinary disability benefits are determined in the same manner as retirement benefits but are payable immediately, without an actuarial reduction, and at a minimum of 12.5% of average final compensation.

*Death Benefits* - For service-connected deaths, the surviving spouse/reciprocal beneficiary receives a monthly benefit of 30% of the average final compensation until remarriage or re-entry into a new reciprocal beneficiary relationship. Additional benefits are payable to surviving dependent children up to age 18. If there is no spouse/reciprocal beneficiary or dependent children, no benefit is payable.

Ordinary death benefits are available to employees who were active at time of death with at least ten years of credited service. The surviving spouse/reciprocal beneficiary (until remarriage/re-entry into a new reciprocal beneficiary relationship) and dependent children (up to age 18) receive a benefit equal to a percentage of member's accrued maximum allowance unreduced for age or, if the member was eligible for retirement at the time of death, the surviving spouse/reciprocal beneficiary receives 100% joint and survivor lifetime pension and the dependent children receive a percentage of the member's accrued maximum allowance unreduced for age.

*Contributory Class for Employees Hired Prior to July 1, 2012*

*Retirement Benefits* - General employees' retirement benefits are determined as 2% of average final compensation multiplied by the years of credited service. General employees with 5 years of credited service are eligible to retire at age 55.

Police and firefighters' retirement benefits are determined using the benefit multiplier of 2.5% for qualified service, up to a maximum of 80% of average final compensation. Police officers and firefighters with five years of credited service are eligible to retire at age 55. Police officers and firefighters with 25 years of credited service are eligible to retire at any age, provided the last five years is service credited in these occupations.

*Disability Benefits* - Members are eligible for service-related disability benefits regardless of length of service and receive a one-time payment of the member's contributions and accrued interest plus a lifetime pension of 50% of their average final compensation. Ten years of credited service is required for ordinary disability. Ordinary disability benefits are determined as 1.75% of average final compensation multiplied by the years of credited service but are payable immediately, without an actuarial reduction, and at a minimum of 30% of average final compensation.

*Death Benefits* - For service-connected deaths, the surviving spouse/reciprocal beneficiary receives a lump sum payment of the member's contributions and accrued interest plus a monthly benefit of 50% of the average final compensation until remarriage or re-entry into a

**Department of Water Supply  
County of Maui  
NOTES TO FINANCIAL STATEMENTS  
June 30, 2019 and 2018**

**NOTE 10 - RETIREMENT BENEFITS (Continued)**

new reciprocal beneficiary relationship. If there is no surviving spouse/reciprocal beneficiary, surviving dependent children (up to age 18) or dependent parents are eligible for the monthly benefit. If there is no spouse/reciprocal beneficiary or dependent children/parents, the ordinary death benefit is payable to the designated beneficiary.

Ordinary death benefits are available to employees who were active at time of death with at least one year of service. Ordinary death benefits consist of a lump sum payment of the member's contributions and accrued interest plus a percentage of the salary earned in the 12 months preceding death, or 50% joint and survivor lifetime pension if the member was not eligible for retirement at the time of death but was credited with at least ten years of service and designated one beneficiary, or 100% joint and survivor lifetime pension if the member was eligible for retirement at the time of death and designated one beneficiary.

*Contributory Class for Employees Hired After June 30, 2012*

*Retirement Benefits* - General employees' retirement benefits are determined as 1.75% of average final compensation multiplied by the years of credited service. General employees with ten years of credited service are eligible to retire at age 60.

Police officers and firefighters' retirement benefits are determined using the benefit multiplier of 2.25% for qualified service, up to a maximum of 80% of average final compensation. Police officers and firefighters with ten years of credited service are eligible to retire at age 60. Police officers and firefighters with 25 years of credited service are eligible to retire at age 55, provided the last five years is service credited in these occupations.

*Disability and Death Benefits* - Members are eligible for service-related disability benefits regardless of length of service and receive a lifetime pension of 50% of their average final compensation plus refund of contributions and accrued interest. Ten years of credited service is required for ordinary disability.

For police officers and firefighters, ordinary disability benefits are 1.75% of average final compensation for each year of service and are payable immediately, without an actuarial reduction, at a minimum of 30% of average final compensation.

Death benefits for contributory members hired after June 30, 2012 are generally the same as those for contributory members hired June 30, 2012 and prior.

*Hybrid Class for Employees Hired Prior to July 1, 2012*

*Retirement Benefits* - General employees' retirement benefits are determined as 2% of average final compensation multiplied by the years of credited service. General employees with five years of credited service are eligible to retire at age 62. General employees with 30 years of credited service are eligible to retire at age 55.

**Department of Water Supply  
County of Maui  
NOTES TO FINANCIAL STATEMENTS  
June 30, 2019 and 2018**

**NOTE 10 - RETIREMENT BENEFITS (Continued)**

*Disability Benefits* - Members are eligible for service-related disability benefits regardless of length of service and receive a lifetime pension of 35% of their average final compensation plus refund of their contributions and accrued interest. Ten years of credited service is required for ordinary disability. Ordinary disability benefits are determined in the same manner as retirement benefits but are payable immediately, without an actuarial reduction, and at a minimum of 25% of average final compensation.

*Death Benefits* - For service-connected deaths, the surviving spouse/reciprocal beneficiary receives a lump sum payment of the member's contributions and accrued interest plus a monthly benefit of 50% of the average final compensation until remarriage or re-entry into a new reciprocal beneficiary relationship. If there is no surviving spouse/reciprocal beneficiary, surviving dependent children (up to age 18) or dependent parents are eligible for the monthly benefit. If there is no spouse/reciprocal beneficiary or dependent children/parents, the ordinary death benefit is payable to the designated beneficiary.

Ordinary death benefits are available to employees who were active at time of death with at least five years of service. Ordinary death benefits consist of a lump sum payment of the member's contributions and accrued interest plus a percentage multiplied by 150%, or 50% joint and survivor lifetime pension if the member was not eligible for retirement at the time of death but was credited with at least ten years of service and designated one beneficiary, or 100% joint and survivor lifetime pension if the member was eligible for retirement at the time of death and designated one beneficiary.

*Hybrid Class for Employees Hired After June 30, 2012*

*Retirement Benefits* - General employees' retirement benefits are determined as 1.75% of average final compensation multiplied by the years of credited service. General employees with ten years of credited service are eligible to retire at age 65. Employees with 30 years of credited service are eligible to retire at age 60. Sewer workers, water safety officers, and emergency medical technicians may retire with 25 years of credited service at age 55.

*Disability and Death Benefits* - Provisions for disability and death benefits generally remain the same except for ordinary death benefits. Ordinary death benefits are available to employees who were active at time of death with at least ten years of service. Ordinary death benefits consist of a lump sum payment of the member's contributions and accrued interest, plus a percentage multiplied by 50% joint and survivor lifetime pension if the member was not eligible for retirement at the time of death but was credited with at least ten years of service and designated one beneficiary, or 100% joint and survivor lifetime pension if the member was eligible for retirement at the time of death and designated one beneficiary.

**Contributions** - Contributions are governed by HRS Chapter 88 and may be amended through legislation. The employer rate is set by statute based on the recommendations of the ERS actuary resulting from an experience study conducted every five years. Since July 1, 2005, the employer contribution rate is a fixed percentage of compensation, including



**Department of Water Supply**  
**County of Maui**  
**NOTES TO FINANCIAL STATEMENTS**  
**June 30, 2019 and 2018**

**NOTE 10 - RETIREMENT BENEFITS (Continued)**

the normal cost plus amounts required to pay for the unfunded actuarial accrued liabilities. The contribution rates for fiscal year 2018 were 31.00% for police officers and firefighters and 19.00% for all other employees. Contributions to the pension plan from the Department were \$2,459,961 and \$2,237,373 for the fiscal years ended June 30, 2019 and 2018, respectively.

Per Act 17 (SLH 2017), employer contributions from the State and counties are expected to increase over four years beginning July 1, 2017. The rate for police officers and firefighters increases to 31.00% on July 1, 2018; and increases to 36.00% on July 1, 2019; and 41.00% on July 1, 2020 and the rate for all other employees' increased to 19.00% on July 1, 2018; 22.00% on July 1, 2019; and 24.00% on July 1, 2020.

The employer is required to make all contributions for noncontributory members. Contributory members hired prior to July 1, 2012, are required to contribute 7.8% of their salary and police officers and firefighters are required to contribute 12.2% of their salary. Contributory members hired after June 30, 2012, are required to contribute 9.8% of their salary, except for police officers and firefighters who are required to contribute 14.2% of their salary. Hybrid members hired prior to July 1, 2012 are required to contribute 6.0% of their salary. Hybrid members hired after June 30, 2012 are required to contribute 8.0% of their salary.

***Pension Liabilities, Pension Expense, and Deferred Outflows of Resources and Deferred Inflows of Resources Related to Pensions*** - At June 30, 2019 and 2018, the Department reported a liability of \$41,040,357 and \$39,254,115, for its proportionate share of net pension liability of the County. The net pension liability was measured as of June 30, 2018 and 2017, and the total pension liability used to calculate the net pension liability was determined by an actuarial valuation as of those dates. The Department's proportion of the net pension liability was based on a proportion of the Department's contributions to the pension plan relative to the project contributions of the County. At June 30, 2018, the Department's proportion of the County's proportion was 6.8667% which was an increase of 0.3075% from its proportion measured as of June 30, 2017. At June 30, 2017, the Department's proportion of the County's proportion was 6.5592% which was a decrease of 0.0471% from its proportion measured as of June 30, 2016.

There were no other changes between the measurement dates, June 30, 2018 and 2017, and the reporting dates, June 30, 2019 and 2018 that are expected to have a significant effect on the proportionate share of the net pension liability.

**Department of Water Supply  
County of Maui  
NOTES TO FINANCIAL STATEMENTS  
June 30, 2019 and 2018**

**NOTE 10 - RETIREMENT BENEFITS (Continued)**

For the fiscal years ended June 30, 2019 and 2018, the Department recognized pension expense of \$1,648,171 and \$5,528,608. At June 30, 2019 and 2018, the Department reported deferred outflows of resources and deferred inflows of resources related to pensions from the following sources:

	June 30, 2019	
	Deferred Outflows of Resources	Deferred Inflows of Resources
Differences between expected and actual experience	\$ 741,443	\$ 301,719
Net difference between projected and actual earnings on pension plan investments	16,877	--
Changes in proportion and difference between Department contributions and proportionate share of contributions	1,411,571	369,448
Changes of assumptions	4,675,507	--
Department contributions subsequent to the measurement date	<u>2,459,961</u>	<u>--</u>
	<u>\$ 9,305,359</u>	<u>\$ 671,167</u>
	June 30, 2018	
	Deferred Outflows of Resources	Deferred Inflows of Resources
Differences between expected and actual experience	\$ 638,507	\$ 446,969
Net difference between projected and actual earnings on pension plan investments	103,630	--
Changes in proportion and difference between Department contributions and proportionate share of contributions	1,186,006	539,709
Changes of assumptions	6,060,567	--
Department contributions subsequent to the measurement date	<u>2,237,373</u>	<u>--</u>
	<u>\$ 10,226,083</u>	<u>\$ 986,678</u>

**Department of Water Supply  
County of Maui  
NOTES TO FINANCIAL STATEMENTS  
June 30, 2019 and 2018**

**NOTE 10 - RETIREMENT BENEFITS (Continued)**

At June 30, 2019, the \$2,459,961 reported as deferred outflows of resources related to pensions resulted from contributions made subsequent to the measurement date that will be recognized as a reduction of the net pension liability in the fiscal year ending June 30, 2020.

Other amounts reported as deferred outflows of resources and deferred inflows of resources related to pensions as of June 30, 2019 will be recognized in pension expense as follows:

Fiscal Year Ending June 30,	Amount
2020	\$ 2,882,185
2021	2,416,188
2022	912,927
2023	2,530
2024	(39,599)
Total	\$ 6,174,231

**Actuarial Assumptions** - The total pension liability in the June 30, 2018 and 2017 actuarial valuations were determined using the following actuarial assumptions adopted by the ERS's Board of Trustees on December 12, 2016, based on the 2015 Experience Study for the five-year period from July 1, 2010 through June 30, 2015:

Inflation rate	2.50%
Payroll growth	3.50%
Investment rate of return	7.00% per year, compounded annually including inflation

There were no changes to ad hoc postemployment benefits including cost of living allowances.

Post-retirement mortality rates are based on the 2016 Public Retirees of Hawaii mortality table with adjustments based on generational projections of the BB projection table for 2016 and full generational projections in future years. Pre-retirement mortality rates are based on multiples of RP-2014 mortality table based on the occupation of the member.

The long-term expected rate of return on pension plan investments was determined using a "top down approach" of the Bespoke Client Constrained Simulation-based Optimization Model (a statistical technique known as "re-sampling with replacement" that directly keys in on specific plan-level risk factors as stipulated by the ERS Board of Trustees) in which best-estimate ranges of expected future real rates of return (expected returns, net of pension plan investment expense and inflation) are developed for each major asset class. These ranges are combined to produce the long-term expected rate of return by weighting the

**Department of Water Supply  
County of Maui  
NOTES TO FINANCIAL STATEMENTS  
June 30, 2019 and 2018**

**NOTE 10 - RETIREMENT BENEFITS (Continued)**

expected future real rates of return (real returns and inflation) by the target asset allocation percentage and by adding expected inflation. The target allocation and best estimates of geometric real rates of return for each major asset class are summarized in the following table:

Strategic Allocation (Risk-Based Classes)	Target Allocation	Long-Term Expected Rate of Return		Long-Term Expected Real Rate of Return*	
		2018	2017	2018	2017
Broad growth	63.00%	7.10%	8.05%	4.85%	5.80%
Principal protection	7.00%	2.50%	2.45%	0.25%	0.20%
Real return	10.00%	4.10%	5.80%	1.85%	3.55%
Crisis risk offset	20.00%	4.60%	5.35%	2.35%	3.10%
	<u>100.00%</u>				

\*Uses an expected inflation of 2.25%

**Discount Rate** - The discount rate used to measure the net pension liability at June 30, 2019 and 2018 was 7.00%. The projection of cash flows used to determine the discount rate assumed that employee contributions will be made at the current contribution rate and that contributions from the County will be made at statutorily required rates, actuarially determined. Based on those assumptions, the pension plan's fiduciary net position was projected to be available to make all projected future benefit payments of current active and inactive employees. Therefore, the long-term expected rate of return on pension plan investments was applied to all periods of projected benefit payments to determine the total pension liability.

**Sensitivity of the Department's Proportionate Share of the Net Pension Liability to Changes in the Discount Rate** - The following presents the Department's proportionate share of the net pension liability as of June 30, 2019 and 2018, calculated using the discount rate of 7.00%, as well as what the Department's proportionate share of the net pension liability would be if it were calculated using a discount rate that is 1-percentage point lower (6.00%) or 1-percentage point higher (8.00%) than the current rate:

	June 30, 2019		
	1% Decrease (6.00%)	Discount Rate (7.00%)	1% Increase (8.00%)
Department's proportionate share of the net pension liability	\$ <u>45,554,079</u>	\$ <u>41,040,357</u>	\$ <u>26,575,815</u>
	June 30, 2018		
	1% Decrease (6.00%)	Discount Rate (7.00%)	1% Increase (8.00%)
Department's proportionate share of the net pension liability	\$ <u>45,941,237</u>	\$ <u>39,254,115</u>	\$ <u>26,801,679</u>

**Department of Water Supply  
County of Maui  
NOTES TO FINANCIAL STATEMENTS  
June 30, 2019 and 2018**

**NOTE 10 - RETIREMENT BENEFITS (Continued)**

***Pension Plan Fiduciary Net Position***

The pension plan's fiduciary net position is determined on the same basis used by the pension plan. The ERS's financial statements are prepared using the accrual basis of accounting under which expenses are recorded in the accounting period in which they are earned and become measurable. Employer and member contributions are recognized in the period in which the contributions are due. Benefits and refunds are recognized when due and payable in accordance with the terms of the plan. Investment purchases and sales are recorded as of their trade date. Administrative expenses are financed exclusively with investment income.

There were no significant changes after the report measurement date. Detailed information about the pension plan's fiduciary net position is available in the separately issued ERS financial report. ERS' complete financial statements are available at <http://www.ers.ehawaii.gov>.

The County of Maui's comprehensive annual financial report contains further disclosures related to the County's proportionate share of the net pension liability and the employer pension contributions.

***Payables to the Pension Plan***

As of June 30, 2019 and 2018, the Department had \$487,502 and \$556,191, respectively, payable to the pension plan.

**Postemployment Benefits Other Than Pensions (OPEB)**

***Plan description*** - The State provides certain health care and life insurance benefits to all qualified employees. Pursuant to Act 88, SLH 2001, the State contributes to the EUTF, an agent multiple-employer defined benefit plan that replaced the Hawaii Public Employees Health Fund effective July 1, 2003. The EUTF was established to provide a single delivery system of health benefits for state and county workers, retirees and their dependents. The EUTF issues an annual financial report that is available to the public. The report may be obtained by writing to the EUTF at P.O. Box 2121, Honolulu, Hawaii 96805-2121.

For employees hired before July 1, 1996, the County pays the entire base monthly contribution for employees retiring with ten years or more of credited service, and 50% of the base monthly contribution for employees retiring with fewer than ten years of credited service. A retiree can elect a family plan to cover dependents.

For employees hired after June 30, 1996 but before July 1, 2001, and who retire with less than 10 years of service, the County makes no contributions. For those retiring with at least 10 years but fewer than 15 years of service, the County pays 50% of the base monthly contribution. For employees retiring with at least 15 years but fewer than 25 years of service, the County pays 75% of the base monthly contribution. For those retiring with at least 25 years of service, the County pays 100% of the base monthly contribution. A retiree can elect a family plan to cover dependents.

**Department of Water Supply  
County of Maui  
NOTES TO FINANCIAL STATEMENTS  
June 30, 2019 and 2018**

**NOTE 10 - RETIREMENT BENEFITS (Continued)**

For employees hired after on or after July 1, 2001, and who retire with fewer than 10 years of service, the County makes no contributions. For those retiring with at least 10 years but fewer than 15 years of service, the County pays 50% of the base monthly contribution. For those retiring with at least 15 years but fewer than 25 years of service, the County pays 75% of the base monthly contribution. For those retiring with at least 25 years of service, the County pays 100% of the base monthly contribution. Only single plan coverage is provided for retirees in this category. Retirees can elect family coverage, but must pay the difference.

**Employees Covered by Benefit Terms** - At July 1, 2018 and 2017, the following number of plan members were covered by the benefit terms:

	2018	2017
Inactive employees or their beneficiaries currently receiving benefits	1,534	1,470
Inactive employees entitled to but not yet receiving benefits	269	248
Active members	2,463	2,494
Total	4,266	4,212

**Contributions** - Measurement of the actuarial valuation and the annual required contributions (ARC) are made for the County as a whole and are not separately computed for the individual County departments and agencies such as the Department. Contributions are governed by HRS Chapter 87A and may be amended through legislation.

The County allocates the ARC to the various departments and agencies based upon a systematic methodology. The Department's contributions paid to the County for the fiscal years ended June 30, 2019 and 2018 were \$1,097,832 and \$1,121,088, which equaled the Department's allocated ARC for postemployment health care and life insurance benefits.

**OPEB Liabilities, OPEB Expense, and Deferred Outflows of Resources and Deferred Inflows of Resources Related to OPEB** - At June 30, 2019 and 2018, the Department's share of the net OPEB liability was \$23,903,694 and 24,037,169, respectively. The net OPEB liability was measured as of July 1, 2018 and 2017, and the total OPEB liability to calculate the net OPEB liability was determined by an actuarial valuation as of those dates.

There were no changes between the measurement date, July 1, 2018, and the reporting date, June 30, 2019, that are expected to have a significant effect on the net OPEB liability.

**Department of Water Supply  
County of Maui  
NOTES TO FINANCIAL STATEMENTS  
June 30, 2019 and 2018**

**NOTE 10 - RETIREMENT BENEFITS (Continued)**

For the fiscal years ended June 30, 2019 and 2018, the Department recognized OPEB expense of \$622,706 and \$2,469,581, respectively. At June 30, 2019 and 2018, the Department reported deferred outflows of resources and deferred inflows of resources related to OPEB from the following sources:

	June 30, 2019	
	Deferred Outflows of Resources	Deferred Inflows of Resources
Differences between expected and actual experience	\$ --	\$ 461,685
Net difference between projected and actual earnings on OPEB plan investments	--	258,427
Changes of assumptions	407,417	--
Department contributions subsequent to the measurement date	<u>3,044,435</u>	<u>--</u>
	<u>\$ 3,451,852</u>	<u>\$ 720,112</u>
	June 30, 2018	
	Deferred Outflows of Resources	Deferred Inflows of Resources
Net difference between projected and actual earnings on OPEB plan investments	\$ --	\$ 285,812
Department contributions subsequent to the measurement date	<u>2,528,321</u>	<u>--</u>
	<u>\$ 2,528,321</u>	<u>\$ 285,812</u>

At June 30, 2019, the \$3,044,435 reported as deferred outflows of resources related to OPEB resulting from contributions subsequent to the measurement date will be recognized as a reduction of the net OPEB liability in the fiscal year ending June 30, 2020.

Other amounts reported as deferred outflows of resources and deferred inflows of resources related to OPEB as of June 30, 2019 will be recognized in OPEB expense as follows:

Fiscal Year Ending June 30,	Net Deferred Outflows (Inflows)
2020	\$ (99,402)
2021	(99,402)
2022	(99,402)
2023	(12,411)
2024	<u>(2,078)</u>
	<u>\$ (312,695)</u>

**Department of Water Supply  
County of Maui  
NOTES TO FINANCIAL STATEMENTS  
June 30, 2019 and 2018**

**NOTE 10 - RETIREMENT BENEFITS (Continued)**

**Actuarial assumptions** - The total OPEB liability in the July 1, 2018 actuarial valuation was determined using the following actuarial assumptions adopted by the EUTF's Board of Trustees on January 8, 2018, based on the experience study covering the five-year period ended June 30, 2015 as conducted for the ERS:

Inflation	2.50%
Salary increases	3.50% to 7.00%, including inflation
Investment rate of return	7.00%
Healthcare cost trend rates	
PPO	Initial rates of 10.00%, declining to a rate of 4.86% after 13 years
HMO*	Initial rates of 10.00%; declining to a rate of 4.86% after 13 years
Contribution	Initial rates of 4.00% and 5.00%; declining to a rate of 4.70% after 12 years
Dental	Initial rates of 5.00% for the first three years; followed by 4.00%
Vision	Initial rates of 0.00% for the first three years, followed by 2.50%
Life insurance	0.00%

\* Blended rates for medical and prescription drug

The total OPEB liability in the July 1, 2017 actuarial valuation was determined using the following actuarial assumptions, applied to all periods included in the measurement, unless otherwise specified:

Inflation	2.50%
Salary increases	3.50% to 7.00%, including inflation
Investment rate of return	7.00%
Healthcare cost trend rates	
PPO	Initial rates of 6.60%, 6.60% and 9.00%, declining to a rate of 4.86% after 14 years
HMO*	Initial rate of 9.00%; declining to a rate of 4.86% after 14 years
Contribution	Initial rates of 2.00% and 5.00%; declining to a rate of 4.86% after 14 years
Dental	3.50%
Vision	2.50%
Life insurance	0.00%

Mortality rates are based on system-specific mortality tables utilizing scale BB to project generational mortality improvement.



**Department of Water Supply  
County of Maui  
NOTES TO FINANCIAL STATEMENTS  
June 30, 2019 and 2018**

**NOTE 10 - RETIREMENT BENEFITS (Continued)**

The long-term expected rate of return on OPEB plan investments was determined using a building-block method in which best-estimate ranges of expected future real rates of return (expected returns, net of OPEB plan investment expense and inflation) are developed for each major asset class. These ranges are combined to produce the long-term expected rate of return by weighting the expected future real rates of return by the target asset allocation percentage and by adding expected inflation.

The target allocation and best estimates of arithmetic real rates of return for each major asset class as of July 1, 2018 and 2017 are summarized in the following table:

Asset Class	2018		2017	
	Target Allocation	Long-Term Expected Real Rate of Return	Target Allocation	Long-Term Expected Real Rate of Return
International equity	17.00%	6.50%	19.00%	7.00%
U.S. equity	15.00%	5.05%	19.00%	5.50%
Private equity	10.00%	8.65%	10.00%	9.25%
Core real estate	10.00%	4.10%	10.00%	3.80%
Trend following	9.00%	3.00%	7.00%	1.75%
U.S. microcap	7.00%	7.00%	7.00%	7.00%
Global options	7.00%	4.50%	7.00%	5.50%
Private credit	6.00%	5.25%	0.00%	0.00%
Long treasuries	6.00%	1.90%	7.00%	1.90%
Alternate risk premium	5.00%	2.45%	0.00%	0.00%
TIPS	5.00%	0.75%	5.00%	0.50%
Core bonds	3.00%	1.30%	3.00%	0.55%
REITs	0.00%	0.00%	6.00%	5.85%
	<u>100.00%</u>		<u>100.00%</u>	

**Single Discount rate** - The discount rate used to measure the total OPEB liability at June 30, 2019 and 2018 was 7.00%, based on the expected rate of return on OPEB plan investments of 7.00% and the municipal bond rate of 3.62% (based on the daily rate closest to but not later than the measurement date of the Fidelity "20-year Municipal GO AA Index"). Beginning with the fiscal year 2019 contribution, the County's funding policy is to pay the recommended actuarially determined contribution, which is based on layered, closed amortization periods. Based on those assumptions, the OPEB plan's fiduciary net position was projected to be available to make all projected future benefit payments of current active and inactive plan members. Therefore, the long-term expected rate of return on OPEB plan investments was applied to all periods of projected benefit payments to determine the total OPEB liability.

**Department of Water Supply  
County of Maui  
NOTES TO FINANCIAL STATEMENTS  
June 30, 2019 and 2018**

**NOTE 10 - RETIREMENT BENEFITS (Continued)**

**OPEB Plan Fiduciary Net Position** - The OPEB plan's fiduciary net position has been determined on the same basis used by the OPEB plan. The EUTF's financial statements are prepared using the accrual basis of accounting under which revenues are recorded when earned and expenses are recorded at the time liabilities are incurred, regardless of the timing of the cash flows. Employer contributions are recognized in the period in which the contributions are due. Benefits and refunds are recognized when due and payable in accordance with the terms of the plan. Investment purchases and sales are recorded on a trade-date basis. Administrative expenses are financed exclusively with investment income.

There were no significant changes after the report measurement date. Detailed information about the OPEB plan's fiduciary net position is available in the separately issued EUTF financial report. The EUTF's complete financial statements are available at <http://eutf.hawaii.gov>.

**Changes in the Net OPEB Liability**

The following schedule presents the changes in the net OPEB liability for the fiscal year ended June 30, 2019 and 2018. The ending balances are as of the measurement dates, July 1, 2018 and 2017.

	Increase (Decrease)		
	Total OPEB Liability	Plan Fiduciary Net Position	Net OPEB Liability
	(a)	(b)	(a) - (b)
<b>Balance at June 30, 2018</b>	\$ 39,568,747	\$ 15,531,578	\$ 24,037,169
<b>Changes for the fiscal year:</b>			
Service cost	910,032	-	910,032
Interest on the total OPEB liability	2,711,292	-	2,711,292
Contributions - employer	-	2,528,321	(2,528,321)
Net investment income	-	1,166,847	(1,166,847)
Difference between expected and actual experience	(537,699)		(537,699)
Changes in assumptions	474,496		474,496
Benefit payments	(1,262,979)	(1,262,979)	-
Administrative expense	-	(3,572)	3,572
<b>Net changes</b>	<u>2,295,142</u>	<u>2,428,617</u>	<u>(133,475)</u>
<b>Balance at June 30, 2019</b>	\$ <u>41,863,889</u>	\$ <u>17,960,195</u>	\$ <u>23,903,694</u>

**Department of Water Supply  
County of Maui  
NOTES TO FINANCIAL STATEMENTS  
June 30, 2019 and 2018**

**NOTE 10 - RETIREMENT BENEFITS (Continued)**

	Increase (Decrease)		
	Total OPEB Liability	Plan Fiduciary Net Position	Net OPEB Liability
	(a)	(b)	(a) - (b)
<b>Balance at June 30, 2017</b>	\$ <u>37,248,935</u>	\$ <u>12,981,757</u>	\$ <u>24,267,178</u>
<b>Changes for the fiscal year:</b>			
Service cost	911,774	-	911,774
Interest on the total OPEB liability	2,597,699	-	2,597,699
Contributions - employer	-	2,413,778	(2,413,778)
Net investment income	-	1,309,402	(1,309,402)
Benefit payments	(1,189,661)	(1,189,661)	-
Administrative expense	-	(2,965)	2,965
Other	-	19,267	(19,267)
<b>Net changes</b>	<u>2,319,812</u>	<u>2,549,821</u>	<u>(230,009)</u>
<b>Balance at June 30, 2018</b>	\$ <u>39,568,747</u>	\$ <u>15,531,578</u>	\$ <u>24,037,169</u>

***Sensitivity of the Department's Proportionate Share of the Net OPEB Liability to Changes in the Discount Rate*** - The following presents the Department's proportionate share of the net OPEB liability calculated using the discount rate, as well as what the Department's proportionate share of the net OPEB liability would be if it were calculated using a discount rate that is 1-percentage point lower or 1-percentage point higher than the current rate:

	June 30, 2019		
	1% Decrease (6.00%)	Discount Rate (7.00%)	1% Increase (8.00%)
Department's proportionate share of the net OPEB liability	\$ <u>30,470,113</u>	\$ <u>23,903,694</u>	\$ <u>18,054,176</u>
	June 30, 2018		
	1% Decrease (6.00%)	Discount Rate (7.00%)	1% Increase (8.00%)
Department's proportionate share of the net OPEB liability	\$ <u>30,677,639</u>	\$ <u>24,037,169</u>	\$ <u>18,711,876</u>

**Department of Water Supply**  
**County of Maui**  
**NOTES TO FINANCIAL STATEMENTS**  
**June 30, 2019 and 2018**

**NOTE 10 - RETIREMENT BENEFITS (Continued)**

***Sensitivity of the Net OPEB Liability to Changes in the Healthcare Cost Trend Rates*** - The following presents the net OPEB liability of the Department, as well as what the Department's net OPEB liability would be if it were calculated using healthcare cost trend rates that are 1-percentage point lower or 1-percentage point higher than the current healthcare cost trend rates:

	June 30, 2019		
	Current Healthcare Cost Trend		
	1% Decrease	Rates	1% Increase
Department's proportionate share of the net OPEB liability	\$ <u>17,758,150</u>	\$ <u>23,903,694</u>	\$ <u>30,973,725</u>
	June 30, 2018		
	Current Healthcare Cost Trend		
	1% Decrease	Rates	1% Increase
Department's proportionate share of the net OPEB liability	\$ <u>18,397,447</u>	\$ <u>24,037,169</u>	\$ <u>31,204,024</u>

**Deferred Compensation Plan**

The County participates in a deferred compensation plan established by the State of Hawaii in accordance with Internal Revenue Code Section 457. The plan is available to all the County employees, and permits employees to defer a portion of their salary until future years by contributing to a fund managed by a plan administrator. The deferred compensation is not available to employees until termination, retirement, death, or unforeseeable emergency.

All plan assets are held in a trust fund to protect them from claims of general creditors and from diversion to any uses other than paying benefits to participants and beneficiaries. The County has no responsibility for loss due to the investment or failure of investment of funds and assets in the plans, but does have the duty of due care that would be required of an ordinary prudent investor. Therefore, in accordance with GASB Statement No.32, *Accounting and Financial Reporting for Internal Revenue Code Section 457 Deferred Compensation Plans*, deferred compensation plan assets are not reported in the accompanying basic financial statements.

**Department of Water Supply**  
**County of Maui**  
**NOTES TO FINANCIAL STATEMENTS**  
**June 30, 2019 and 2018**

**NOTE 11 - SICK LEAVE**

Accrued sick leave aggregated to approximately \$5.0 million and \$5.5 million as of June 30, 2019 and 2018, respectively. Sick leave can accumulate at the rate of one and three-quarters working days for each month of service without limit, but can be taken only in the event of illness and is not convertible to pay upon termination of employment. However, a County employee who is vested in the retirement system and retires or leaves government service in good standing with 60 days or more of unused sick leave is entitled to additional service credit in the ERS.

**NOTE 12 - RISK MANAGEMENT**

The Department participates in the County's insurance program, which is self-insured for worker's compensation, vehicle, and general liabilities. The County has excess insurance for vehicle and general liability losses over \$500,000. The liability for claims and judgments was estimated based on a combination of case-by-case review and the application of historical experience. Because of the inherent uncertainties in estimating future projected liabilities of claims and judgments, it is at least reasonably possible that the estimates used may change within the near-term.

**SUPPLEMENTARY INFORMATION**

**Department of Water Supply  
County of Maui  
SCHEDULE I - SCHEDULE OF CAPITAL ASSETS  
Fiscal Year Ended June 30, 2019**

	Balance July 1, 2018	Additions and Transfers	Retirements	Balance June 30, 2019	Accumulated Depreciation July 1, 2018	Additions	Retirements	Accumulated Depreciation June 30, 2019
	\$ 7,905,059	\$ --	\$ --	\$ 7,905,059	\$ --	\$ --	\$ --	\$ --
voirs	1,843,362	10,462,920	--	12,306,282	458,019	140,460	--	598,479
	4,251,683	--	--	4,251,683	3,661,331	53,716	--	3,715,047
	20,831,410	--	--	20,831,410	4,350,022	412,767	--	4,762,789
	20,714,841	--	--	20,714,841	2,258,917	466,238	--	2,725,155
	34,656,213	--	--	34,656,213	31,106,058	708,722	--	31,814,780
	80,340,001	841,061	--	81,181,062	31,278,907	2,088,584	--	33,367,491
	1,672,930	--	--	1,672,930	1,200,049	32,702	--	1,232,751
	1,072,693	276,707	--	1,349,400	867,820	26,476	--	894,296
	591,079	--	--	591,079	586,564	4,021	--	590,585
	36,789,562	1,456,155	--	38,245,717	25,076,359	1,995,326	--	27,071,685
t	2,708,773	--	--	2,708,773	2,250,464	134,321	--	2,384,785
	3,136,099	3,441,962	--	6,578,061	2,684,746	416,112	--	3,100,858
	54,918,359	1,774,283	--	56,692,642	44,167,867	1,321,420	--	45,489,287
s	302,182,459	12,403,539	--	314,585,998	131,329,532	6,698,583	--	138,028,115
	4,257,244	153,032	--	4,410,276	2,501,663	141,824	--	2,643,487
	8,901,738	21,608	--	8,923,346	5,479,001	400,105	--	5,879,106
	54,155	--	--	54,155	33,126	2,221	--	35,347
	198,385	--	--	198,385	109,978	5,276	--	115,254
	72,674	--	--	72,674	65,711	1,316	--	67,027
	535,995	--	--	535,995	331,483	22,555	--	354,038
	2,729,380	1,412,128	--	4,141,508	1,582,714	151,595	--	1,734,309
	1,682,737	--	--	1,682,737	1,227,288	82,287	--	1,309,575
	291,058	--	--	291,058	291,058	--	--	291,058
	11,181,241	135,250	--	11,316,491	4,379,802	221,043	--	4,600,845
	246,277	--	--	246,277	213,226	4,097	--	217,323
	603,765,407	32,378,645	--	636,144,052	297,491,705	15,531,767	--	313,023,472
	644,566	37,045	(15,541)	666,070	583,803	27,070	(15,541)	595,332
	5,538,546	39,138	--	5,577,684	4,765,476	308,630	--	5,074,106
	<u>\$ 609,948,519</u>	<u>\$ 32,454,828</u>	<u>\$ (15,541)</u>	<u>\$ 642,387,806</u>	<u>\$ 302,840,984</u>	<u>\$ 15,867,467</u>	<u>\$ (15,541)</u>	<u>\$ 318,692,910</u>
		\$ 5,156,121						
		3,323,425						
		21,496,925						
		1,242,227						
		343,571						
		892,559						
		<u>\$ 32,454,828</u>						

ress.

**Department of Water Supply  
County of Maui  
SCHEDULE II - SCHEDULE OF LONG-TERM DEBT - GENERAL OBLIGATION B  
June 30, 2019**

<b>County of Maui General Obligation Bonds</b>	<b>Fiscal Year</b>	<b>Coupon Interest Rate</b>	<b>Bond Dated</b>	<b>Maturing Serially From</b>	<b>Call Dates</b>	<b>Authorized and Issued</b>
G.O. Refunding Bonds, 2010 Series B (a)	2020	4.000	12/1/2010	6/1/2020	Noncallable	\$ 417,419
	2021	4.000	12/1/2010	6/1/2021	6/1/2020	434,195
Total 2010 Series B Issue						<u>851,614</u>
G.O. Refunding Bonds, 2012 Series B (b)	2020	5.000	11/1/2012	6/1/2020	Noncallable	186,708
	2021	5.000	11/1/2012	6/1/2021	Noncallable	196,382
	2022	5.000	11/1/2012	6/1/2022	Noncallable	206,056
	2023	4.000	11/1/2012	6/1/2023	Noncallable	216,214
	2024	2.125	11/1/2012	6/1/2024	6/1/2023	224,921
	2025	3.000	11/1/2012	6/1/2025	6/1/2023	229,758
	2026	3.000	11/1/2012	6/1/2026	6/1/2023	236,529
	2027	3.000	11/1/2012	6/1/2027	6/1/2023	243,785
	2028	3.000	11/1/2012	6/1/2028	6/1/2023	251,040
	2029	3.000	11/1/2012	6/1/2029	6/1/2023	258,779
	2030	3.000	11/1/2012	6/1/2030	6/1/2023	266,519
	2031	3.000	11/1/2012	6/1/2031	6/1/2023	274,258
	2032	3.000	11/1/2012	6/1/2032	6/1/2023	<u>282,481</u>
Total 2012 Series B Issue						<u>3,073,430</u>
G.O. Refunding Bonds, 2012 Series C (c)	2020	5.000	11/1/2012	6/1/2020	Noncallable	940,000
	2021	5.000	11/1/2012	6/1/2021	Noncallable	985,000
	2022	5.000	11/1/2012	6/1/2022	Noncallable	1,035,000
	2023	4.000	11/1/2012	6/1/2023	Noncallable	<u>1,090,000</u>
Total 2012 Series C Issue						<u>\$ 4,050,000</u>



**Department of Water Supply**  
**County of Maui**  
**SCHEDULE II - SCHEDULE OF LONG-TERM DEBT - GENERAL OBLIGATION BONDS**  
**June 30, 2019**

County of Maui General Obligation Bonds	Fiscal Year	Coupon Interest Rate	Bond Dated	Maturing Serially From	Call Dates	Authorized and Issued
G.O. Refunding Bonds, 2014 Series C (d)						
	2020	5.000	12/1/2014	6/1/2020	Noncallable	\$ 275,000
	2021	5.000	12/1/2014	6/1/2021	Noncallable	290,000
	2022	5.000	12/1/2014	6/1/2022	Noncallable	305,000
	2023	5.000	12/1/2014	6/1/2023	Noncallable	320,000
	2024	5.000	12/1/2014	6/1/2024	Noncallable	335,000
	2025	3.000	12/1/2014	6/1/2025	6/1/2024	350,000
	2026	3.000	12/1/2014	6/1/2026	6/1/2024	360,000
	2027	4.000	12/1/2014	6/1/2027	6/1/2024	370,000
	2028	3.000	12/1/2014	6/1/2028	6/1/2024	385,000
	2029	3.000	12/1/2014	6/1/2029	6/1/2024	400,000
	2030	3.000	12/1/2014	6/1/2030	6/1/2024	410,000
	2031	3.125	12/1/2014	6/1/2031	6/1/2024	420,000
	2032	3.250	12/1/2014	6/1/2032	6/1/2024	435,000
	2033	3.250	12/1/2014	6/1/2033	6/1/2024	450,000
	2034	3.250	12/1/2014	6/1/2034	6/1/2024	<u>465,000</u>
Total 2014 Series C Issue						<u>5,570,000</u>
G.O. Refunding Bonds, 2015 Series B (e)						
	2020	5.000	3/1/2016	9/1/2020	Noncallable	<u>575,469</u>
Total 2015 Series B Issue						<u>575,469</u>
G.O. Refunding Bonds, 2015 Series D (f)						
	2020	5.000	3/1/2016	9/1/2020	Noncallable	311,112
	2021	5.000	3/1/2016	9/1/2021	Noncallable	327,120
	2022	5.000	3/1/2016	9/1/2022	Noncallable	343,128
	2023	5.000	3/1/2016	9/1/2023	Noncallable	360,528
	2024	5.000	3/1/2016	9/1/2024	Noncallable	378,624
	2025	5.000	3/1/2016	9/1/2025	Noncallable	397,416
	2026	3.000	3/1/2016	9/1/2026	9/1/2025	416,904
	2027	3.000	3/1/2016	9/1/2027	9/1/2025	<u>437,784</u>
Total 2015 Series D Issue						\$ <u>2,972,616</u>

Department of Water Supply

County of Maui

DULE II - SCHEDULE OF LONG-TERM DEBT - GENERAL OBLIGATION BONDS (Continued)

June 30, 2019

	Fiscal Year	Coupon Interest Rate	Bond Dated	Maturing Serially From	Call Dates	Authorized and Issued	Outstanding June 30, 2018	Payable Within One Year
Series C (g)	2020	5.000	9/1/2018	9/1/2020	Noncallable	\$ 245,000	\$ 245,000	\$ 245,000
	2021	5.000	9/1/2018	9/1/2021	Noncallable	240,000	240,000	—
	2022	5.000	9/1/2018	9/1/2022	Noncallable	250,000	250,000	—
	2023	5.000	9/1/2018	9/1/2023	Noncallable	265,000	265,000	—
	2024	5.000	9/1/2018	9/1/2024	Noncallable	275,000	275,000	—
	2025	5.000	9/1/2018	9/1/2025	Noncallable	290,000	290,000	—
	2026	5.000	9/1/2018	9/1/2026	Noncallable	305,000	305,000	—
	2027	5.000	9/1/2018	9/1/2027	Noncallable	320,000	320,000	—
	2028	5.000	9/1/2018	9/1/2028	Noncallable	335,000	335,000	—
	2029	5.000	9/1/2018	9/1/2029	9/1/2028	350,000	350,000	—
	2030	5.000	9/1/2018	9/1/2030	9/1/2028	370,000	370,000	—
	2031	4.000	9/1/2018	9/1/2031	9/1/2028	390,000	390,000	—
	2032	3.000	9/1/2018	9/1/2032	9/1/2028	405,000	405,000	—
						<u>4,040,000</u>	<u>4,040,000</u>	<u>245,000</u>
						\$ <u>21,133,129</u>	\$ <u>21,133,129</u>	\$ <u>2,950,708</u>

**Department of Water Supply**  
**County of Maui**  
**SCHEDULE II - SCHEDULE OF LONG-TERM DEBT -**  
**GENERAL OBLIGATION BONDS (Continued)**  
**June 30, 2019**

**NOTES:**

- (a) The General Obligation Refunding Bonds, 2010, Series B, maturing on or before June 1, 2020 are issued without the right or option of the County of Maui to redeem the same prior to their respective maturity dates. The County of Maui reserves the right and option to redeem the Bonds maturing on June 1, 2021, prior to their stated maturity, on or after June 1, 2020, in whole or in part at any time, in order of maturity selected by the County of Maui and by lot within a maturity, at 100% of the principal amount.
- (b) The General Obligation Refunding Bonds, 2012, Series B, maturing on or before June 1, 2023 are issued without the right or option of the County of Maui to redeem the same prior to their respective maturity dates. The County of Maui reserves the right and option to redeem the Bonds maturing on June 1, 2024 to June 1, 2032, prior to their stated maturity, on or after June 1, 2023, in whole or in part at any time, in order of maturity selected by the County of Maui and by lot within a maturity, at 100% of the principal amount.
- (c) The General Obligation Refunding Bonds, 2012, Series C, maturing before June 1, 2023 are issued without the right or option of the County of Maui to redeem the same prior to their respective maturity dates.
- (d) The General Obligation Refunding Bonds, 2014, Series C, maturing on or before June 1, 2024 are issued without the right or option of the County of Maui to redeem the same prior to their respective maturity dates. The County of Maui reserves the right and option to redeem the Bonds maturing on June 1, 2025 to June 1, 2034, prior to their stated maturity, on or after June 1, 2024, in whole or in part at any time, in order of maturity selected by the County of Maui and by lot within a maturity, at 100% of the principal amount.
- (e) The General Obligation Refunding Bonds, 2015, Series B, maturing before September 1, 2025 are issued without the right or option of the County of Maui to redeem the same prior to their respective maturity dates.
- (f) The General Obligation Refunding Bonds, 2015, Series D, maturing on or before September 1, 2025 are issued without the right or option of the County of Maui to redeem the same prior to their respective maturity dates. The County of Maui reserves the right and option to redeem the Bonds maturing on September 1, 2026 to September 1, 2027, prior to their stated maturity, on or after September 1, 2025, in whole or in part at any time, in order of maturity selected by the County of Maui and by lot within a maturity, at 100% of the principal amount.
- (g) The General Obligation Refunding Bonds, 2018, Series C, maturing on or before September 1, 2028 are not subject to redemption prior to maturity. The bonds maturing on or after September 1, 2019 are subject to redemption at the option of the County on or after September 1, 2028, in whole or in part at any time, from any maturities selected by the County, at a redemption price equal to 100% of the principal amount of the Bonds or portions thereof to be redeemed plus accrued interest to the date of redemption.

**PART II**

**REPORT ON INTERNAL CONTROL OVER FINANCIAL REPORTING  
AND ON COMPLIANCE AND OTHER MATTERS**

**INDEPENDENT AUDITOR'S REPORT ON INTERNAL CONTROL OVER  
FINANCIAL REPORTING AND ON COMPLIANCE AND OTHER MATTERS  
BASED ON AN AUDIT OF FINANCIAL STATEMENTS PERFORMED IN  
ACCORDANCE WITH GOVERNMENT AUDITING STANDARDS**

To the Council Chair,  
and Members of the Council  
County of Maui  
Wailuku, Maui, Hawai'i

We have audited, in accordance with the auditing standards generally accepted in the United States of America and the standards applicable to financial audits contained in *Government Auditing Standards* issued by the Comptroller General of the United States, the financial statements of the Department of Water Supply of the County of Maui (the Department), a proprietary fund of the County of Maui, as of and for the fiscal year ended June 30, 2019, and the related notes to the financial statements, and have issued our report thereon dated December 20, 2019.

**Internal Control Over Financial Reporting**

In planning and performing our audit of the financial statements, we considered the Department's internal control over financial reporting (internal control) to determine the audit procedures that are appropriate in the circumstances for the purpose of expressing our opinions on the financial statements, but not for the purpose of expressing an opinion on the effectiveness of the Department's internal control. Accordingly, we do not express an opinion on the effectiveness of the Department's internal control.

*A deficiency in internal control* exists when the design or operation of a control does not allow management or employees, in the normal course of performing their assigned functions, to prevent, or detect and correct, misstatements on a timely basis. A *material weakness* is a deficiency, or a combination of deficiencies, in internal control, such that there is a reasonable possibility that a material misstatement of the entity's financial statements will not be prevented, or detected and corrected on a timely basis. A *significant deficiency* is a deficiency, or a combination of deficiencies, in internal control that is less severe than a material weakness, yet important enough to merit attention by those charged with governance.

Our consideration of internal control was for the limited purpose described in the first paragraph of this section and was not designed to identify all deficiencies in internal control that might be material weaknesses or significant deficiencies. Given these limitations, during our audit we did not identify any deficiencies in internal control that we consider to be material weaknesses.

### **Compliance and Other Matters**

As part of obtaining reasonable assurance about whether the Department's financial statements are free from material misstatement, we performed tests of its compliance with certain provisions of laws, regulations, contracts, and grant agreements, noncompliance with which could have a direct and material effect on the determination of financial statement amounts. However, providing an opinion on compliance with those provisions was not an objective of our audit, and accordingly, we do not express such an opinion. The results of our tests disclosed no instances of noncompliance or other matters that are required to be reported under *Government Auditing Standards*.

### **Purpose of this Report**

The purpose of this report is solely to describe the scope of our testing of internal control and compliance and the results of that testing, and not to provide an opinion on the effectiveness of the entity's internal control or on compliance. This report is an integral part of an audit performed in accordance with *Government Auditing Standards* in considering the entity's internal control and compliance. Accordingly, this communication is not suitable for any other purpose.

**N&K CPAs, Inc.**

Honolulu, Hawai'i  
December 20, 2019

# ATTACHMENT "2"

**APPENDIX A**

# WATER MANAGEMENT AREAS

FOR GROUND WATER ONLY

 Water Management Areas



## ISLAND OF OAHU

- North Sector
- Windward Sector
- Honolulu Sector
- Pearl Harbor Sector
- Central Sector



## ISLAND OF MOLOKAI

- West Sector
- Central Sector
- Northeast Sector
- Southeast Sector



## ISLAND OF MAUI

- Iao System



STATE OF HAWAII  
Department of Land and Natural Resources  
Commission on Water Resource Management










APPENDIX B



Department of Land and Natural Resources  
Commission on Water Resource Management  
Stream Protection and Management Branch

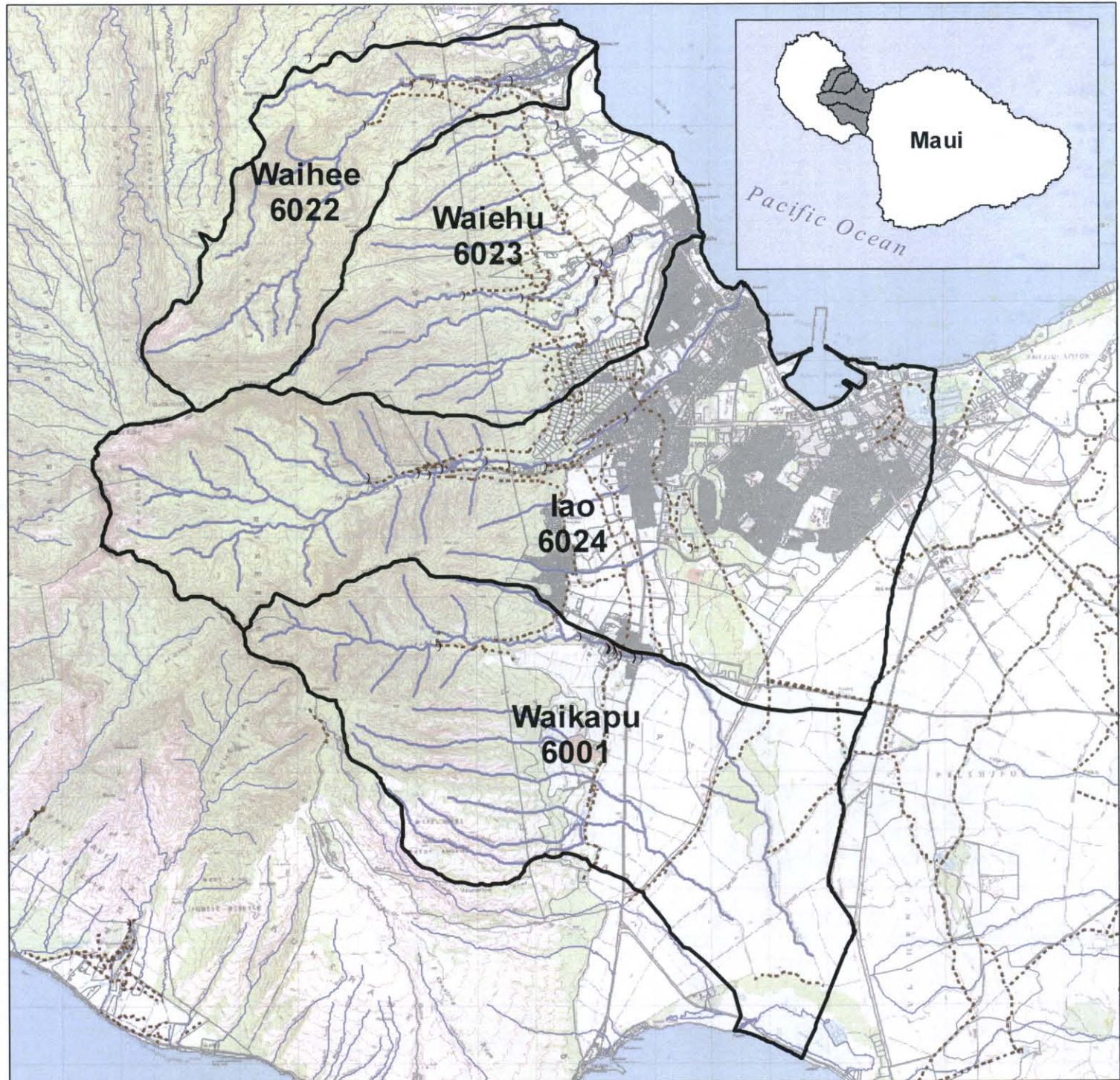
**Na Wai Eha, Maui  
Designated Surface Water  
Management Areas**

**Legend**

-  Hydrologic Units and Code
-  TMK Parcels
-  Streams
-  Irrigation System
-  Diversions

This map was produced by the Department of Land and Natural Resources (DLNR), Commission on Water Resource Management for planning purposes. It should not be used for boundary interpretations or other spatial analysis beyond the limitations of the data. Information regarding compilation dates and accuracy of the data presented can be obtained from DLNR.

Date: 04/29/2008  
Datum: North American Datum 1983



# ATTACHMENT “3”

DWS - Current Vacant Position Report  
As of March 16, 2020

Job Profile	Comp	Location	Division	Status
Laborer II	BU01-BC03	DWS Kahului Baseyard	Field Ops	Requesting list
Water Plant Maintenance Mechanic I	BU01-BC11	DWS Kahului Baseyard	Plant Ops	Recruiting
Construction Equipment Mechanic I	BU01-BC11	DWS Kahului Baseyard	Field Ops	Candidate selected - processing
Pipefitter II	BU01-WS09	Molokai Baseyard	Field Ops	Potential transfer
Plant Electrician/Electronics Repairer Sup	BU02-F212	DWS Kahului Baseyard	Plant Ops	Continuous recruiting
Planner V	BU13-SR24	One Main Plaza	Planning	On hold-return rights
Water Service Supervisor II	BU02-F209	Lahaina Baseyard	Field Ops	TAing staff to meet MQs
Water Service Clerk-Dispatcher	BU03-SR15	DWS Kahului Baseyard	Field Ops	Recruiting
Meter Reader And Field Collection Sup	BU04-SR17	Admin	Fiscal	TAing staff to meet MQs
Equipment Operator IV	BU01-BC10	DWS Kahului Baseyard	Field Ops	TAing current staff
Carpenter I	BU01-BC09	DWS Kahului Baseyard	Field Ops	Candidate selected - processing
Civil Engineer I	BU13-SR18	Admin	Engineering	Recruiting
Electronic Technician I	BU01-BC15	DWS Kahului Baseyard	Plant Ops	Recruiting
Pre-Audit Clerk I	BU03-SR11	Admin	Fiscal	Failed Recruitment, re-recruiting
Water Microbiologist III	BU13-SR22	DWS Kahului Baseyard	Plant Ops	On hold
Water Plant Maintenance Mechanic II	BU01-WS11	DWS Kahului Baseyard	Plant Ops	Recruiting PWOE
Plant Electrician/Electronics Repairer II	BU01-WS12	DWS Kahului Baseyard	Plant Ops	Recruiting PWOE
WTP Operator IV	BU01-BC13	Mahinahina WTP	WTP Ops	Reallocating to WTPOTrainee
Cashier II	BU03-SR12	Admin	Fiscal	Interviewing
Water Plant Maintenance Mechanic I	BU01-BC11	Piiholo WTP	WTP Ops	Recruiting
Civil Engineer IV	BU13-SR24	Admin	Engineering	Recruiting
Civil Engineer VI	BU13-SR28	Admin	Engineering	On hold
Pipefitter Helper	BU01-BC05	DWS Kahului Baseyard	Field Ops	Interviewing

# ATTACHMENT “4”

LIMITED DISTRIBUTION

COUNTY OF MAUI  
FY 2020 COUNCIL ADOPTED BUDGET  
EQUIPMENT DETAIL

Department Water Supply  
Program WATER OPERATIONS PROGRAM

Fund Enterprise Fund  
Sub-Fund Water Supply Fund

953604C DWS WATER TREATMENT PLANTS

DEPT PRIORITY NO.	EQUIPMENT	TYPE	AGE	MILEAGE	ESTIMATED USE LIFE	QTY	COST PER UNIT	TOTAL COST	DESCRIPTION/JUSTIFICATION
10	Other Equipment (7044)	Replacement	20	N/A	20	3	\$10,000	\$30,000	Finish water pumps OLINIA
11	Motor Vehicles (7040)	Replacement	26	90,289	20	1	\$75,000	\$75,000	Heavy duty flat bed truck with lift gate.
12	Other Equipment (7044)	Replacement	20	N/A	20	1	\$20,000	\$20,000	#3 Raw water feed pump and motor KAPOLE
16	Other Equipment (7044)	Replacement	15	N/A	15	1	\$20,000	\$20,000	#1 Baldor VFD KAPOLE
26	Computer Equipment (7031)	Replacement	5	N/A	5 Years	2	\$2,700	\$5,400	Computers for SCADA KAPOLE
32	Other Equipment (7044)	Replacement	20	N/A	20	1	\$8,000	\$8,000	10" Flow Meter for MWTF Backwash Decant
33	Computer Equipment (7031)	Replacement	7	N/A	7	2	\$5,000	\$10,000	Admin desktop computers MANUWANINA
36	Other Equipment (7044)	Replacement	20	N/A	20	1	\$10,000	\$10,000	Surface Water Pump PIHOLE
37	Other Equipment (7044)	Replacement	20	N/A	20	1	\$10,000	\$10,000	Backwash Water Pump PIHOLE
40	Other Equipment (7044)	Replacement	5	N/A	5	1	\$12,000	\$12,000	Bubble Tester LWTF
42	Other Equipment (7044)	Replacement	20	N/A	20	1	\$8,000	\$8,000	CMF Influent Meter OLINIA
	Other Equipment (7044)	New	N/A	N/A	5	1	\$53,500	\$53,500	Remote control mower
<b>TOTAL</b>	<b>953604C DWS WATER TREATMENT PLANTS</b>							<b>\$261,900</b>	
<b>TOTAL</b>	<b>WATER OPERATIONS PROGRAM</b>							<b>\$1,960,412</b>	

#10 can purchase 1 and move the other 2 next year  
#36+37 can move to next year

PROPOSED FISCAL YEAR 2021  
 Department: WATER SUPPLY

Fund: WATER FUND

**WATER TREATMENT PLANT OPERATIONS**

	FY2019 BUDGET	FY2020 PROPOSED	CHANGE AMOUNT	% CHANGE	
Salaries & Wages + Premium Pay	2,209,867	2,240,240	30,373	1.4%	Correction of salaries; step and pay raises, prem pay \$275,000
Operations	5,365,222	5,422,824	57,602	1.1%	
Equipment	261,900	479,500	217,600	83.1%	
<b>Total</b>	<b>7,836,989</b>	<b>8,142,564</b>	<b>305,575</b>	<b>3.9%</b>	

**SALARIES & WAGES:**

EP Count	28.0	28.0
----------	------	------

**OPERATIONS (Changes: Increase/Decrease)**

S/O	Description				
6120	Electricity	2,250,000	2,295,000	45,000	2.0% Inflationary adjustment.
6178	Water Delivery Charges	420,063	432,665	12,602	3.0% Inflationary Adjustment
		<b>2,670,063</b>	<b>2,727,665</b>	<b>57,602</b>	<b>2.2%</b>

**EQUIPMENT:**

**953604 - Water Treatment Plant Operations**

7031	Computer Equipment	5,400	0	
7031	Computer Equipment	10,000	0	
7040	Motor Vehicles	75,000	45,000	4 wheel drive S.U.V. - CM1806 Olinda
7044	Other Equipment	30,000	50,000	(2) Raw Water Vault Meters - Piiholo/Kamaole
7044	Other Equipment	20,000	18,000	Vault Flow Meter - Piiholo
7044	Other Equipment	20,000	12,000	Service Water Pump - Piiholo
7044	Other Equipment	8,000	250,000	(5) Raw Water + Filter Valves & Actuators - Piiholo
7044	Other Equipment	10,000	24,000	(2) Bubble testers - Mahinahina/Kamaole
7044	Other Equipment	10,000	27,000	(2) 12" influent Valves & Actuators - Mahinahina
7044	Other Equipment	12,000	53,500	Remote Control Mower - Piiholo
7044	Other Equipment	8,000	0	
7044	Other Equipment	53,500	0	
		<b>261,900</b>	<b>479,500</b>	

### Equipment Expansion Budget Request

Complete appropriate yellow boxes throughout. Please provide a separate schedule per expansion request.

1 Priority No.:  of

Strategic Alignment:

2 Program:

Department:

Division:

3 Fund:

Sub-Fund:

Other:

#### 4 Equipment Expenditures

Index Code	Subobj Code	Subobj Code Description	New or Replacement	Age	Mileage	Estimated Use Life	Description of Equipment/Vehicle	Quantity	Price Per Unit	FY 2020 Department Proposed
935604C	7044	Finish Water Pump	Replacement	20			Finish Water Pump	3	\$10,000	\$30,000

#### 5 Justification

Purpose of Expansion request:

new replacement equipment 20yrs old

Anticipated outcome/impact after implementation of changes:

plant efficiency

*one of these 3 pumps is being purchased now (2020) budget 1*

*We are requesting funds for the other 2 pumps (that were used to buy a replacement truck) be reinstated for use in the 2021 proposed budget.*

*T.L.*

Equipment Expansion Budget Request

Complete appropriate yellow boxes throughout. Please provide a separate schedule per expansion request.

1 Priority No.:  of

Strategic Alignment:

2 Program:

Department:

Division:

3 Fund:

Sub-Fund:

Other:

4 Equipment Expenditures

Index Code	Subobj Code	Subobj Code Description	New or Replacement	Age	Mileage	Estimated Use Life	Description of Equipment/Vehicle	Quantity	Price Per Unit	FY 2020 Department Proposed
935604C	7044	Surface water pump	Replacement	20		20	Surface water pump	1	\$10,000	\$10,000

5 Justification

Purpose of Expansion request:

new replacement equipment for 20 yrs old equipment

Anticipated outcome/Impact after implementation of changes:

plant efficiency

*These funds also used to purchase the replacement truck. We would like to purchase this Pump in the proposed 2021 budget.*

*T.L.*



Equipment Expansion Budget Request

Complete appropriate yellow boxes throughout. Please provide a separate schedule per expansion request.

1 Priority No.:  of

Strategic Alignment:

2 Program:

Department:

Division:

3 Fund:

Sub-Fund:

Other:

4 Equipment Expenditures

Index Code	Subobj Code	Subobj Code Description	New or Replacement	Age	Mileage	Estimated Use Life	Description of Equipment/Vehicle	Quantity	Price Per Unit	FY 2020 Department Proposed
935604C	7044	Backwash water pump	Replacement	20		20	Backwash water pump	1	\$10,000	\$10,000

5 Justification

Purpose of Expansion request:

new replacement equipment for 20 yrs old equipment

Anticipated outcome/impact after Implementation of changes:

plant efficiency

*Purchase of this pump was also deferred in order to use funds to buy the replacement truck. We would like to purchase this pump in the proposed 2021 budget. T.L.*



COUNTY OF MAUI  
REVIEW REQUEST TO PURCHASE  
UNBUDGETED EQUIPMENT ≥ \$1,000

FISCAL  
YEAR  
2020

Fund # 550	Dept. # 25	Department WATER SUPPLY		FOR BUDGET USE 223	
Program OPERATIONS		Division WATER TREATMENT PLANT	Contact Person TONY LINDER		Phone/Ext 270-7380
<b>EQUIPMENT BEING REPLACED</b>					
County Tag # CofM 2228	Equipment #	Fund Code	Description 2008 Ford F-150	Age/Mileage 12 yrs 147063	Original Purchase Cost
<b>REQUESTED REPLACEMENT - NEW ADDITION</b>					
Purchase Type Outright <input checked="" type="checkbox"/> Lease <input type="checkbox"/>		If lease purchase: Annual Cost    Years of Contract    Estimated Life 10 yrs			Check One: <input checked="" type="checkbox"/> Replace Existing Equipment <input type="checkbox"/> Additional Equipment
Equipment Type 4-dr, 4WD Pickup Truck		Funding Source Index Code    Subsubject Code 953604C    7040		Equipment Purchase Cost \$40,000	
<b>JUSTIFICATION (Attach any supporting documents)</b>					
1. If replacement, briefly describe condition of existing equipment. Truck # 2228 was involved in a serious accident resulting in the vehicle being unusable. (Vehicle is totaled)					
2. Description of Need/Service (for new or replaced equipment). This vehicle is used daily as a commuter vehicle by staff to and from the Piiholo base yard to assigned WTP sites.					
3. Is it necessary for legal compliance, to maintain safety and/or a health work environment? Each treatment plant is required by law to be staffed daily, (365) by a licensed WTPO. This vehicle ensures proper compliance.					
4. Will purchasing this equipment casue cost savings (If so, how? Quantify dollars and hours, if possible). (See #3 above)					
5. Number of other items of similar equipment presently available for use. All vehicles at the Piiholo base yard are currently in use performing other duties. No spares.					
6. Physical location of the equipment to be used (Division, branch, section and geographical location). Piiholo baseyard. Makawao forest reserve. Also Olinda, Iao and Kamole WTP's.					
7. Alternative (What will happen if the department does not receive this unbudgeted equipment?) Staffing levels and/or time spent at the facilities may be compromised.					
8. Request related to any other CIP submission? If yes, which project? No					
9. Other comments This much needed vehicle was in a serious accident rendering it unusable. The division has re-prioritized equipment purchases. WTP division will defer \$40,000 of pump replacements as this is a higher priority.					
<b>CERTIFICATION OF DEPARTMENT HEAD</b>					
Name/Title Helene Kau, Deputy Director <small>FOR SUCCESSION</small>		Signature <i>Helene Kau</i>		Date January 24, 2020	
<b>APPROVALS REQUIRED</b>					
Michele M. Yoshimura, Budget Director		Signature <i>Michele M Yoshimura</i>		Date 2/24/2020	
Sandy Baz, Managing Director		Signature <i>Sandy Baz</i>		Date 2/24/2020	
Michael P. Victorino, Mayor		Signature <i>Michael P Victorino</i>		Date 2/24/2020	

COUNTY OF MAUI

Acquisition for Replacement of Existing Motor Vehicle  
Request Form

RECEIVED

2020 JAN 24 PM 1: 52

OFFICE OF THE MAYOR

Department: Water Supply Division: Treatment Plant

Submitted by (Print Name): Warren Sardinha Position Title: Support Supervisor

Signature: [Signature] Date: 1-24-20

Approved by: [Signature] Date: 1-24-2020  
(Department Director)

Recommended for Approval: [Signature] Date: 2/10/20  
(Dept. of Management)

Approved by: [Signature] Date: 2/11/20  
(Managing Director)

The vehicle requested for replacement consideration must meet at least two of the following criteria. Identify and explain as necessary which two criteria apply: 1 and 4.

1. Passenger vehicles (sedans, station wagons, vans, light pick up trucks) - 7 years or 100,000 miles;
2. The unit, when operated, endangers the safety of the operator, passengers and/or people that are in close proximity to it, and that the repair costs to address safety issues exceed its replacement acquisition cost;
3. The unit cannot be repaired due to unavailability of parts;
4. The repair cost of a unit damaged by accident or other causes exceeds the actual cash value of the unit prior to the damage;
5. The accumulated MAJOR repair costs plus the anticipated additional repair costs to recondition the unit exceeds 50% of the replacement acquisition cost;
6. The history of annual cost of renting a substitute for a unit that is sidelined for an extended period due to difficulty in obtaining parts exceeds the average annual cost of a new unit; or
7. The unit is obsolete and is no longer suitable for the mode of operations.

Attachment Q (Page 1 of 2)

Cost benefit analysis: Vehicle COM-2228 was involved in a vehicle accident on 1/19/2020. This vehicle is not repairable due to major components were damaged frame, rear end, cab, and front suspension, and also the vehicle has 147,063 miles there is no benefit to try to repair this vehicle even if it were possible.

## **Acquisition for Replacement of Existing Motor Vehicle Request Form (Cont.)**

Requests to acquire a new vehicle to replace an existing vehicle shall be evaluated based on the requesting agency's responses to the following. Please provide complete answers to the following to ensure a complete and efficient review of the vehicle request. Additional supporting documentation may be provided if relevant to the request.

1. What is the vehicle year and current mileage reading?  
2008 ford F150 4x4 extend cab millage 147,063
2. What are the average miles of official annual usage for the past 3 years?  
43,200 miles
3. What is the need for the continued use of the vehicle to maintain the present level of service? Describe in detail the function it must perform, including driving routes and miles, and the frequency of performance in a normal routine or cycle of work (which may be daily, weekly, monthly, etc.).  
This vehicle is used 7 days a week from Piholo to lao treatment plant
4. Describe the impact on operations if the vehicle is not replaced.  
We are using a loaner but we need a truck for our daily operation to haul materials.
5. Identify opportunities to substitute the vehicle with another without curtailing other essential services. Is there an existing vehicle(s) available in this division, or other divisions within the department that can be also used to accommodate this need? What considerations have been given to consolidating vehicle use?  
We have just enough vehicles to go around before the vehicle accident.
6. What is the estimated minimum mileage per year that this vehicle will be driven? (Complete the Minimum Mileage Evaluation & Determination Worksheet, see Attachment C)
7. Prepare a cost benefit analysis. The requesting department should detail the **cost(s)** to acquire (i.e. costs of vehicle and any special equipment) and the **benefit(s)** that will be derived by the County by replacing the existing vehicle. (Benefits should include descriptions of and quantified cost savings to operations, efficiencies gained, etc.).
8. Is this a Council-approved budgeted request? If yes, please indicate the funding source (program, index code).

### **Attachment Q (Page 2 of 2)**



**MINIMUM USE MILEAGE EVALUATION & DETERMINATION WORKSHEET**

Department: Water Supply

Division: Water Treatment (East)

Position Title(s): Water Treatment Plant Operators

Duties: Vehicle Used to transport the Operators from Baseyard Piholo to the Iao plant in the Morning and then bring the Operators back to the Piholo Baseyard at the end of the day.

Recommended Vehicle:	Ford	F-150	2008	CM2228	W11584	147299	1/3/20
	Make	Model	Year	License #	Asset #	Odometer Reading & Date	

Prepared by (Print): Kelly K. Wright

Prepared by (Signature): *Kelly K. Wright*

Date: 1-6-20

Approved by Director: *T. [Signature]*

Date: 1/13/20

Instructions: This worksheet serves to document mileage driven a given vehicle to help evaluate and determine vehicle utilization on an annualized basis and shall be prepared for every County vehicle.

This worksheet should be completed as accurately as possible with estimates used as necessary. If travel activity is recurring on a monthly basis, one form may be completed and annualized. If travel activity is not recurring and varies from month to month, a worksheet may be prepared to reflect the varying months, then summarized to calculate an annualized estimate. Do not fill shaded spaces; this information will calculate based on your input.

See also the COM Motor Vehicle Policy Section C, County Vehicle Usage and Assignment, Section D, Take Home Vehicles (THV), and Section G, Vehicle Acquisition, Replacement and Disposal.

Period/Month of Review: Dec-19

	Activity Description	Purpose	From (Address/Location)	To (Address / Location)	Miles	Frequency (# of times per month)	Total Miles Per Mo.	Comments (Indicate if estimated or actual)
1	Going to Iao WTF	Work	Piholo	Iao	20	30	600	Estimated
2	Going to Piholo WTF	Work	Iao	Piholo	20	30	600	Estimated
3							0	
4							0	
5							0	
6							0	
7							0	
8							0	
9							0	
10							0	
11							0	
12							0	
13							0	
14							0	
15							0	
	Month Total						1200	
	Annualized				480	720	14400	

**Attachment C**



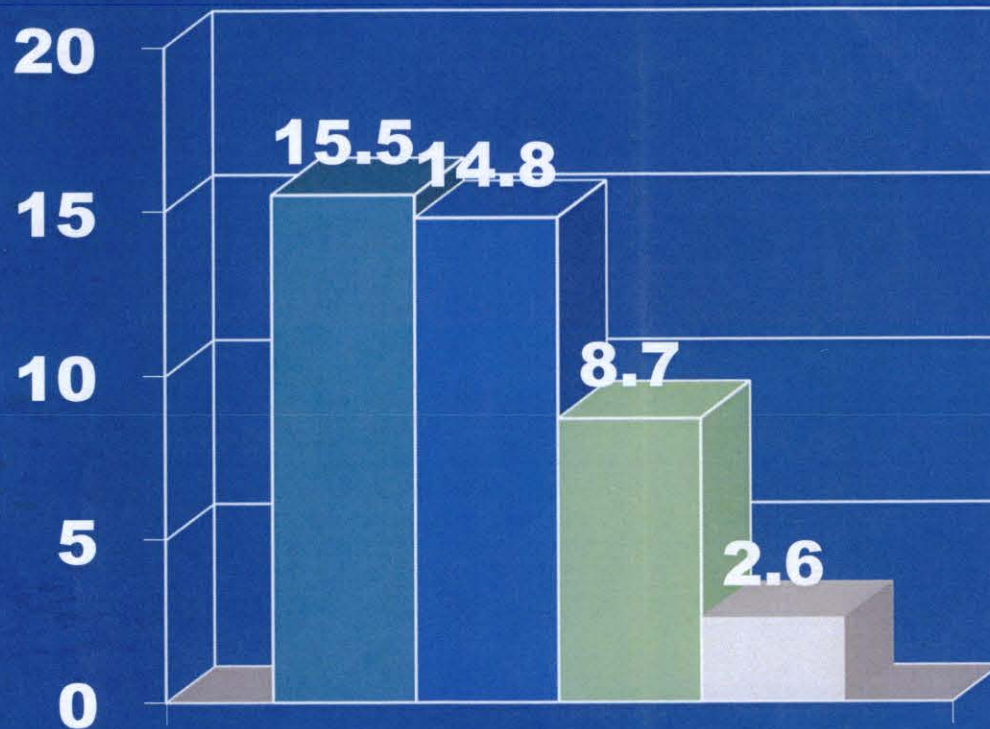






# ATTACHMENT “5”

# Major Expenditures



□ Electricity      □ Payroll  
■ Debt Service    ■ Grants

- Electricity
  - \$15.5 million    22%
- Payroll
  - \$14.8 million    21%
- Debt Service
  - \$8.7 million     12%
- Grants
  - \$2.6 million     4%
- These total 59% of \$70.2 million Operating Budget

Reprinted 02/25/2020