

An aerial photograph of Wailuku, Maui, showing a dense residential area with many houses and streets. In the background, there are large, green mountains with some clouds. The sky is blue with white clouds.

KEHALANI ROADWAY DEDICATION

Wailuku, Maui

KEHALANI MASTER PLANNED COMMUNITY



PROJECT INFORMATION

- Master-planned community
- Wailuku – Kahului Project District 3
 - MCC Chapter 19.80
- Original Zoning obtained November 1991
 - Encompasses 549 acres
 - Community Parks and Open Space
 - DOE Pu'u Kukui Elementary School
 - Bikeways and Pedestrian Pathways
 - Village Center-Foodland, Longs Drugs, local banks

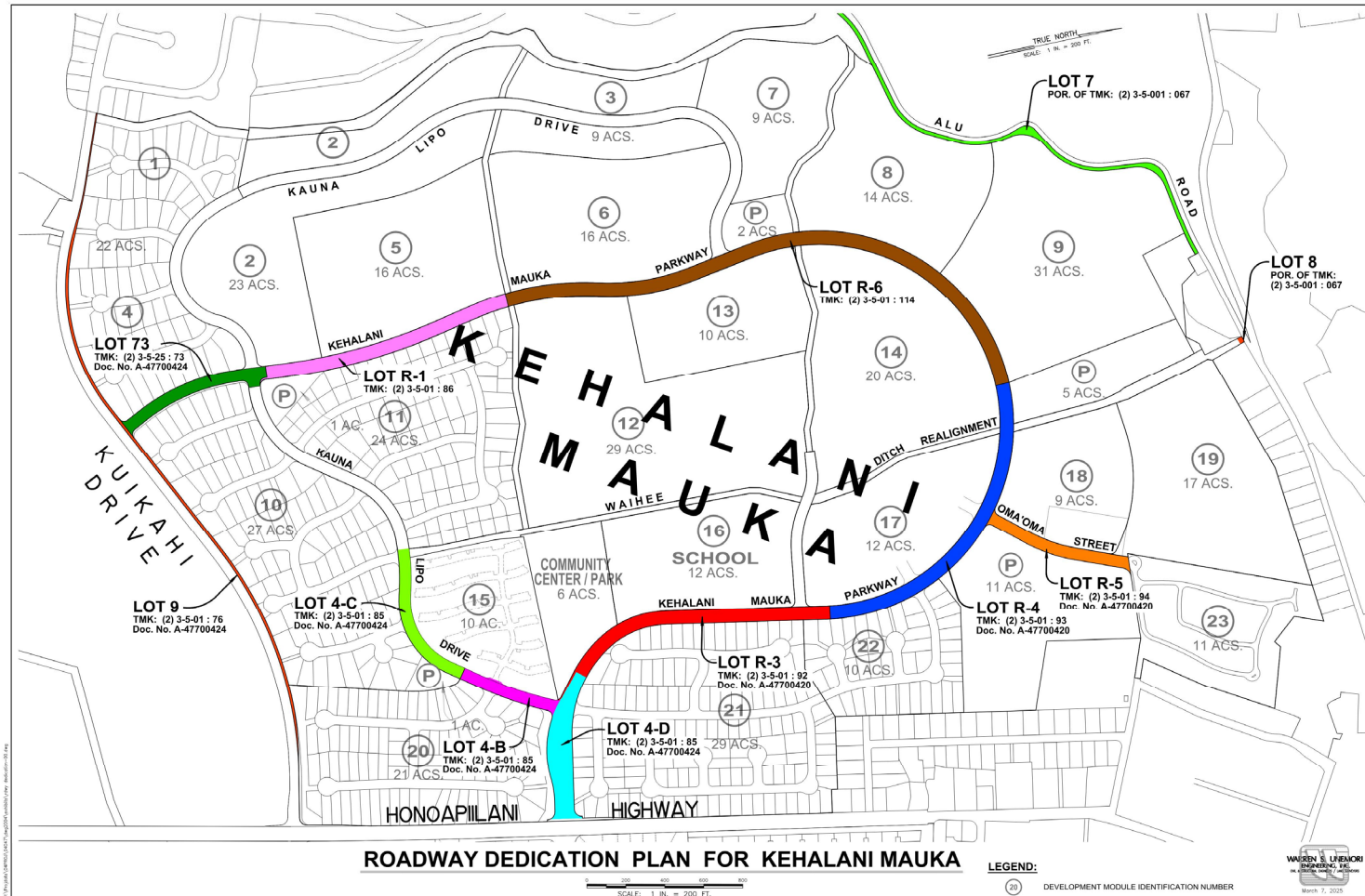
MASTER PLAN BUILDOUT



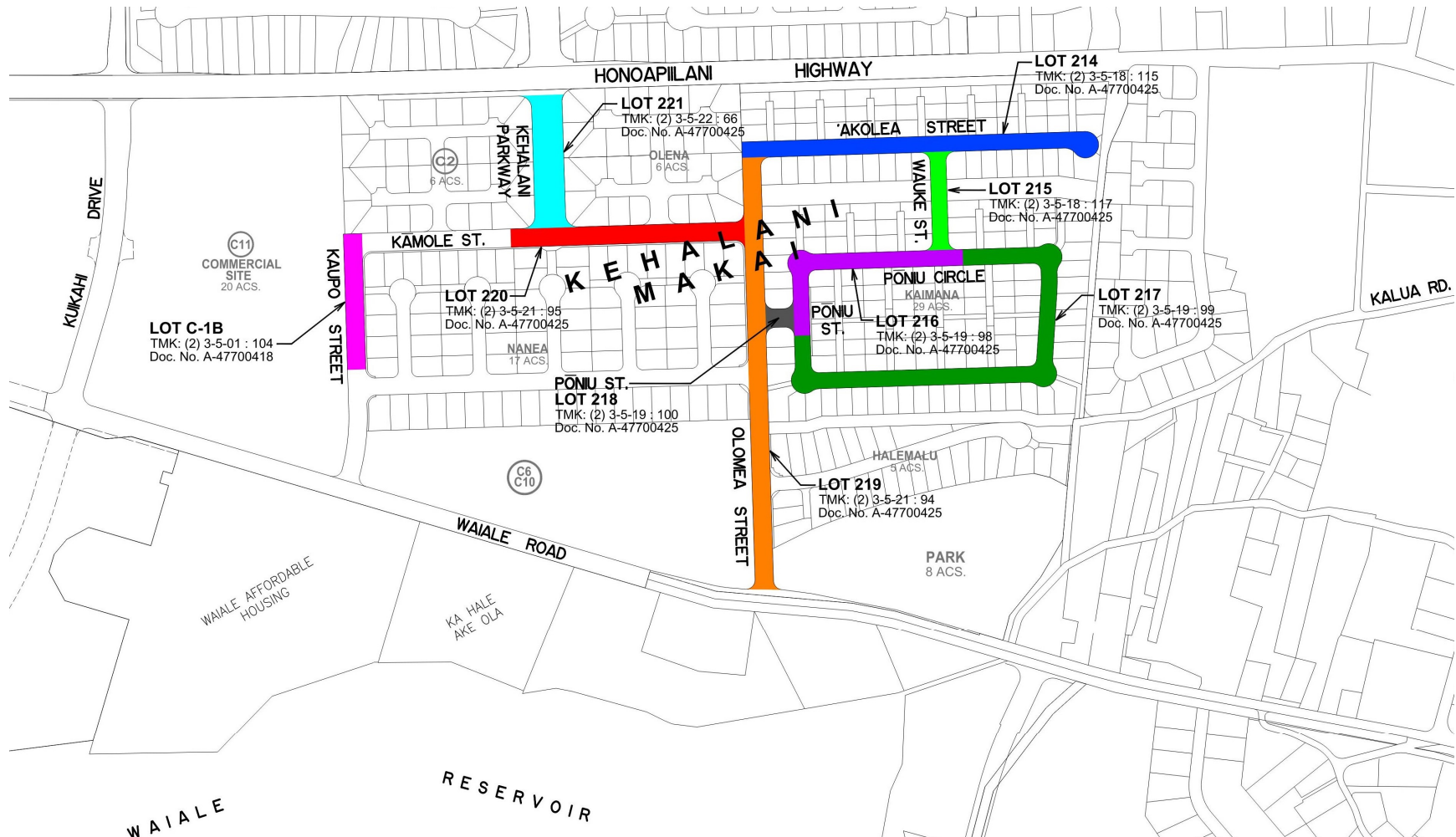
PROJECT INFORMATION

- One of the Largest Homeowner's Associations in Hawaii
 - Approved for up to 2,400 residential units
 - Roughly about 2,127 residential units completed
 - Currently approximately 6,400 residents
 - Community for local families and workforce (close to County/State Buildings, courthouse, hospital, schools, Wailuku offices and businesses)

MAUKA ROADWAY LOTS



MAKAI ROADWAY LOTS



ROADWAY DEDICATIONS

- Roadways were built to the County Standards at that time they were constructed and were always intended to be dedicated to the County (a little over 3-miles)
 - Construction plans were previously approved by County agencies with this understanding
- County & the public are already using the roadways:
 - County Kehalani Mauka Park with parking and restrooms
 - DOE Pu`u Kukui Elementary School
 - County bus stop and route
 - County Department of Water Supply well facilities

ROADWAY DEDICATIONS

- RCFC and Homeowner's Association already addressed several punchlist items
 - Re-striping of collector roadways and intersections
 - Repairing sidewalk and road curbs damaged by tree roots
 - Replacing street signage
 - Repairing / replacing curb ramp detectable warning mats
 - Added flashing beacons at bike path crossing on Kauna Lipo Drive
 - Executed Access and Maintenance Agreement with County for HOA to provide landscape and irrigation maintenance

RESTRIPING ROADWAYS



LANDSCAPE MAINTENANCE AGREEMENT



ROADWAY DEDICATIONS

- Roadways were designed, approved, and built to County Standards when constructed
- Standards changed over the last 30 years
- Not all roads meet current County Standards
 - 25+ year old makai roadways – 4ft sidewalk only on 1 side of roadway (consistent with most of Wailuku and an improvement over older areas in Wailuku or around the island with no sidewalks)

SINGLE SIDEWALKS



COUNTY COUNCIL ACCEPTANCE ITEMS

- Accept the existing curb ramps
 - All were designed, approved, and built to County Standards when constructed
 - Standards changed over the last 30 years
- Accept crosswalks at Poniu Street/Olomea Street and Halemalu Place/Olomea Street
 - Crosswalk markings were “striped” in accordance with regulations existing at the time of construction

EXISTING CURB RAMP



EXISTING CROSSWALK STRIPING



COUNTY COUNCIL ACCEPTANCE ITEMS

- Accept street trees in existing locations
 - Placed in accordance with approved plans
 - Street trees are a County requirement
- Accept sidewalks in current conditions
 - Sidewalks have been repaired multiple times over the years
 - Current condition can be attributed to normal wear and tear.

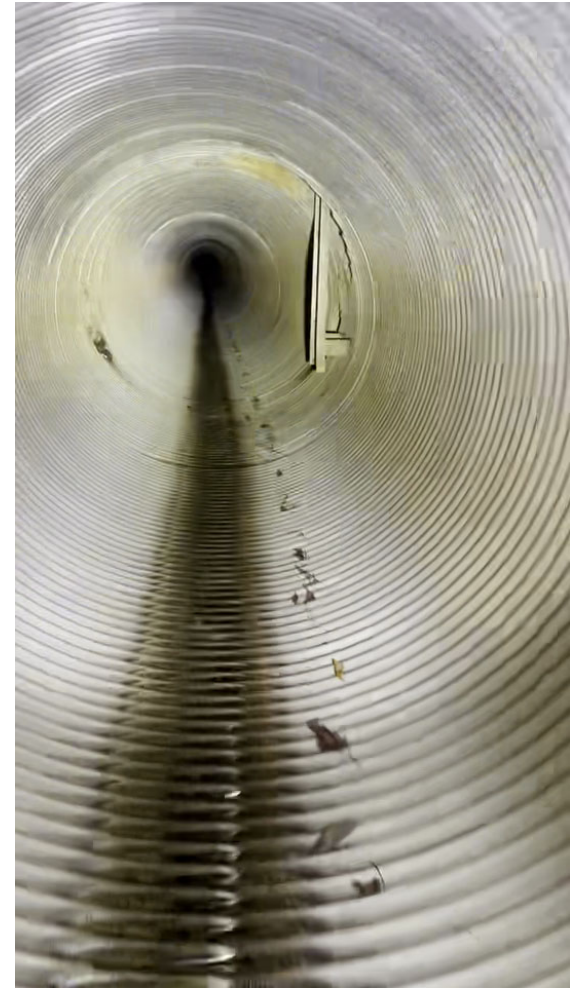
EXISTING STREET TREES



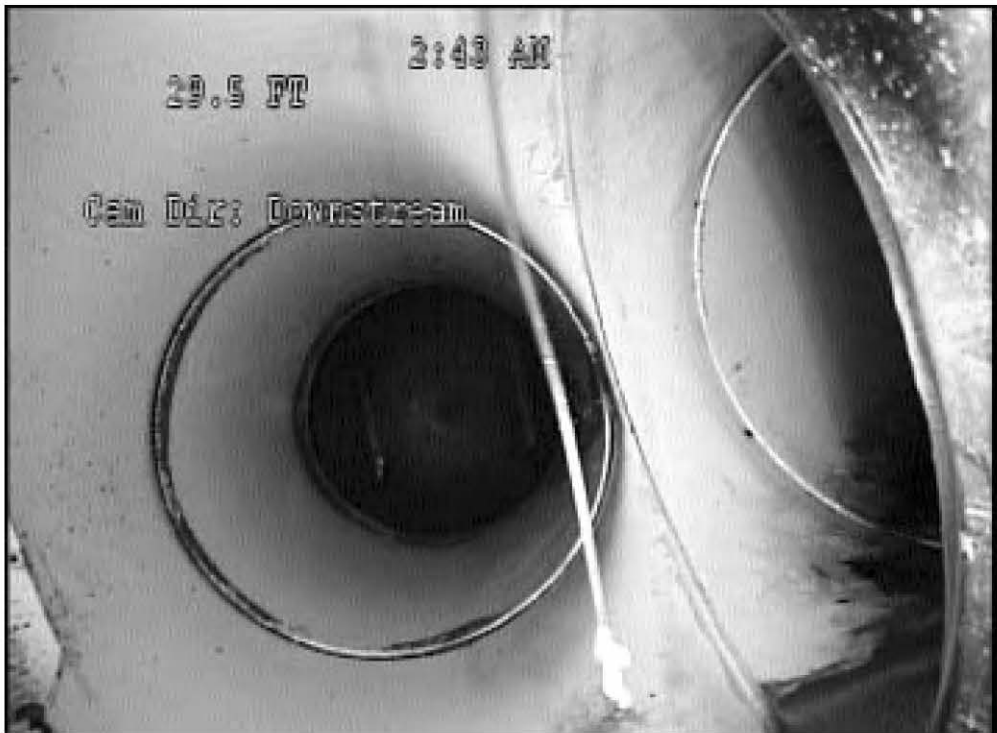
COUNTY COUNCIL ACCEPTANCE ITEMS

- Accept the Sewer improvements “as is” with normal wear and tear
 - Homeowners have been paying full sewer fees to the County for years but not receiving County service and maintenance
 - Typical home’s monthly sewer charge is \$80.
 $\$80 \times 2,200 \text{ homes} \times 12 \text{ mos} = \2.1M/yr

ALUMINUM DRAINAGE SYSTEM



MAKAI SEWER SYSTEM



NEXT STEPS

- County Council accept the roadways under MCC 3.44.015.F.4. (Acquisitions of real property)
- Finance Director sign the warranty deeds finalizing dedication of the roadways to the County

MAHALO

- Any questions?