

**The County of Maui
Department of Water Supply (DWS)
Watershed Protection Grant Program**



Prepared for:

**The Agriculture, Diversification, Environment, and
Public Transportation Committee**

February 8, 2024

PRESENTATION OUTLINE

- The Need for the DWS Watershed Protection Grants Program
- Current DWS Grantees and Funding Amounts
- Fiscal Year 2024 (FY24) Grantee Progress and Drawdowns
- The DWS Successes, Opportunities, and Challenges
- The DWS Watershed Grants Program opportunities for FY25



The Need for The Watershed Protection Grants Program

- Forested watersheds face major invasive threats that alters its ability to provide efficient ecosystem services that help maintain **reliable groundwater recharge and stream flow that provides Maui's drinking water supplies.**
- Feral ungulates (hogs, deer, cows, goats) damage forests by wallowing, uprooting and trampling vegetation, which destabilizes the vegetation against erosion.
- Non-native weed species can overtake efficient native forest overstory and deprive sunlight from understory native plants that are adapted to capturing rain and fog drip to re-nourish soil in the upper watersheds.
- Watershed Partnerships provide on-the-ground management of protective fencing and control feral ungulates from over-whelming critical upper watersheds.
- Coming in Fiscal Year 2025 are proposals to actively reduce fire risks by clearing and monitoring the wildland urban interface (WUI) where watersheds border populated areas



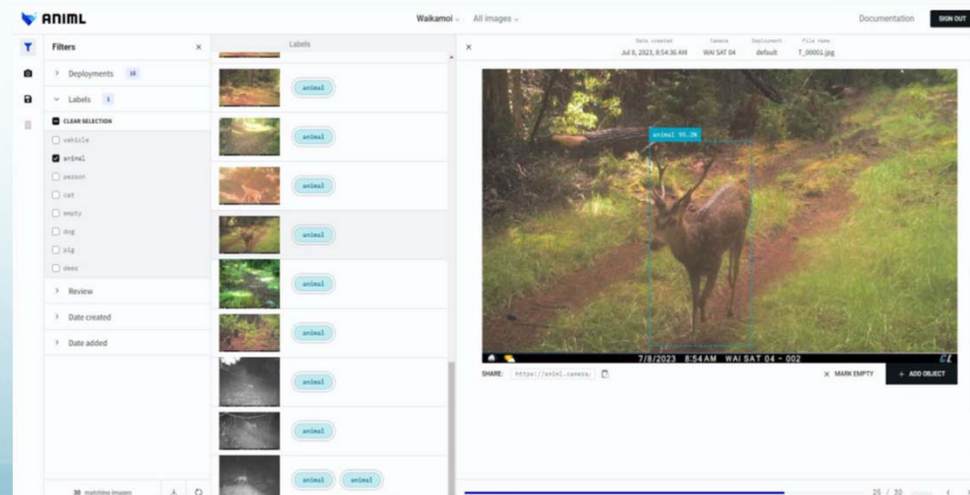
FY24 WATERSHED PROTECTION PROGRAM

GRANTEES AND AWARDED AMOUNTS

	Applicant Proposal	Awarded Amount
1. East Maui Watershed Partnership	\$550,000	\$550,000
2. Waikamoi Haipua'ena Water Source Protection	\$330,661	\$330,661
3. Auwahi Forest Restoration Project	\$145,039	\$145,039
4. Mauna Kahalawai Watershed Partnership	\$924,934	\$818,000
5. Honokowai & Wahikuli Source Protection	\$116,017	\$116,017
6. Pu'u Kukui Watershed Preserve	\$441,933	\$385,902
7. East Molokai Watershed Partnership	\$250,000	\$250,000
8. Maui Invasive Species Committee	\$260,000	\$260,000
9. Hawaii Agriculture Research Center – Koa	\$55,500	\$55,500
10. Hawaii Agriculture Research Center – Ohi'a	\$74,000	\$37,000
Countywide funds		\$100,000
	\$3,148,084	\$3,048,119

FY24 Grantee Progress and Drawdowns

- In order to alleviate overlapping of funding between previous and current fiscal years, all Grantees, starting in FY24 were provided Notice to Proceed Letters (NTPs) with a project performance period starting on January 1st to December 31
- Grantees are reconciling and closing out their FY23 grants
- FY24 Grantees are only in the second month of their Performance Period (PP), and will be submitting their first quarter reports on April 2024
- Many Grantees face the same staff turnover issues that began before and worsened during the Covid-19 pandemic
- The DWS and Grantees are working together to learn and improve the use of the Amplifund grants management platform for improved transparency and accounting



288,000

Acres of watershed
lands managed

138+

Miles of ungulate
fence constructed

110,000+

Invasive weeds
removed

\$29M+

Funded since 1997

SUCCESSSES

- Protecting priority watershed areas throughout Maui County
- Strong public outreach and volunteerism
- Funding investments are tied to operational budget to ensures reliable funding for projects now and into the future
- Thorough monitoring of expenditures to be fiscally responsible



CHALLENGES

- Field staff turnover
- Required time to hire qualified technical staff
- Monitoring and propagation of new and existing biological control of invasive plants
- Growing populations of ungulates below project fence lines
- The inclusion of a sustainable WUI component to existing grant deliverables



FY 2025 OPPORTUNITIES

- Ongoing grant applications and administration (and possibly contracting) development on Amplifund platform
- Inclusion of quarterly before and after photographs of project areas where deliverables occur, including Geographic Information Systems (GIS) data
- Guide Grantees to learn more about the Amplifund platform where all required budget and progress reports are submitted
- Incorporate feedback from Grantees regarding the Amplifund platform
- Help Grantees develop their Wildland Urban Interface (WUI) scope of work proposals