

HALIIMAILE RESIDENTIAL SUBDIVISION

210-LOT SUBDIVISION

TAX MAP KEY: (2) 2-5-03:29

HALIIMAILE, HI 96768

PROJECT TEAM

OWNER / APPLICANT
HOKUULA PARTNERS LLC.
360 PAPA PLACE, UNIT 203
KAHULUI, HAWAII 96732
P: (808) 357-0514
E: howie@hokulanipacific.com
CONTACT: HOWIE KIHUNE JR.

**LAND USE PLANNING &
CIVIL ENGINEER**
PIONEER DESIGN GROUP, INC.
PO BOX 283304
HONOLULU, HI 96828
P: (808) 753-2376
E: tocampbell@pd-grp.com
CONTACT: T.C. CAMPBELL, P.E.

SURVEYOR
AKAMAI LAND SURVEYING, LLC.
PO BOX 1748
MAKAWAO, HI 96768
P: (808) 876-0177
E: dudley@akamaisurvey.com
CONTACT: DUDLEY DUPONTE

LANDSCAPE ARCHITECT
K TANAKA LANDSCAPE, LLC.
WAILUKU, HI 96793
P: (808) 243-9494
E: ktanaka001@hawaii.rr.com
CONTACT: KEVIN TANAKA

GEOTECHNICAL ENGINEER
HAWAII GEOTECHNICAL CONSULTING
WAILUKU, HI 96793
P: (808) 205-1727
E: rmgibbene@yahoo.com
CONTACT: ROBERT GIBBENS

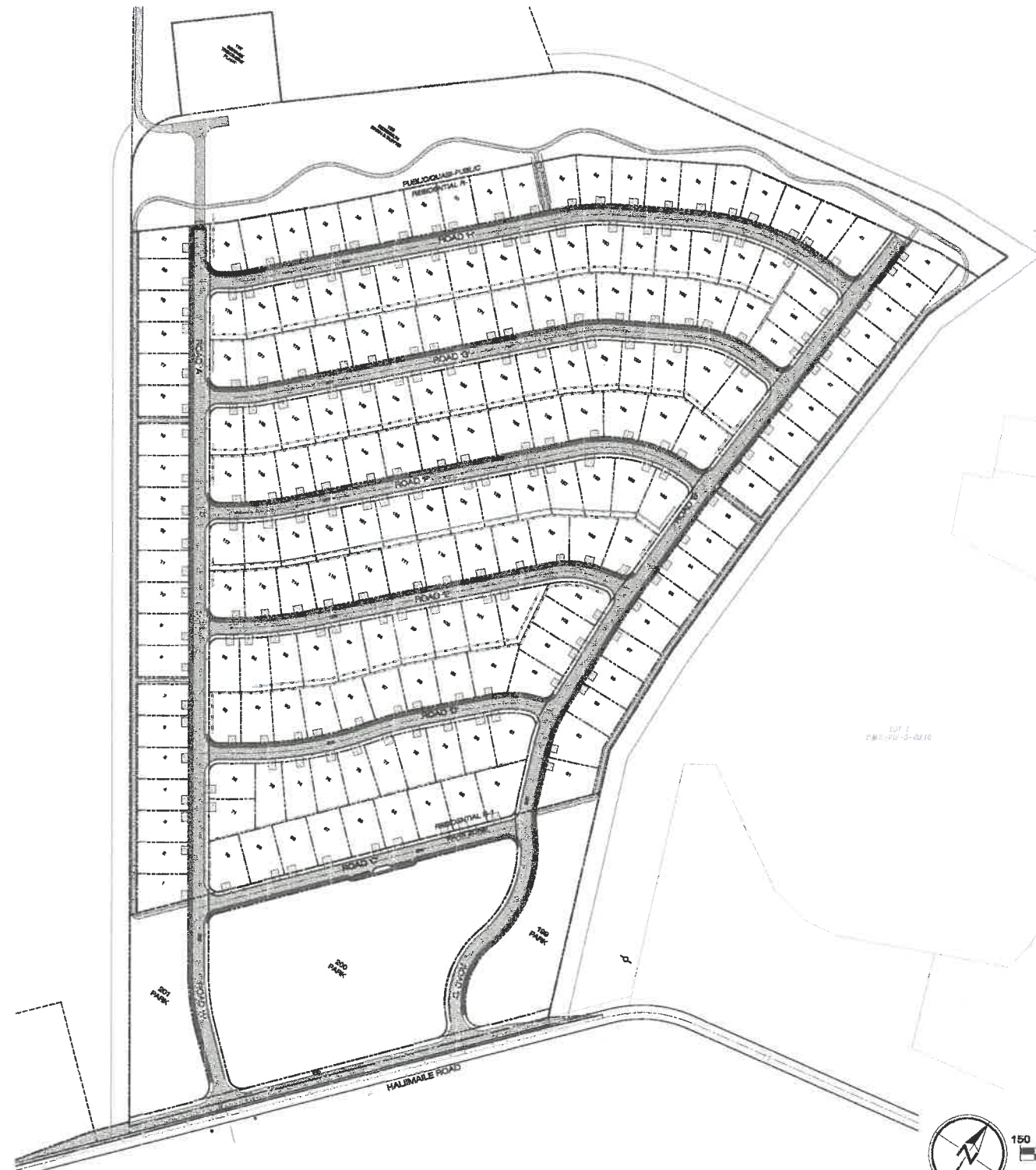
ELECTRICAL ENGINEER
COFFMAN ENGINEERS, INC.
745 FORT STREET #400
HONOLULU, HI 96813
P: (808) 687-8884
E: jeremy.dow@coffman.com
CONTACT: JEREMY DOW

TRAFFIC ENGINEER
AUSTIN, TSUTSUMI &
ASSOCIATES, INC.
1871 WILI PA LOOP, STE. A
WAILUKU, HI 96793
P: (808) 244-8044
E: tfujiwara@atahawaii.com
CONTACT: TYLER FUJIWARA

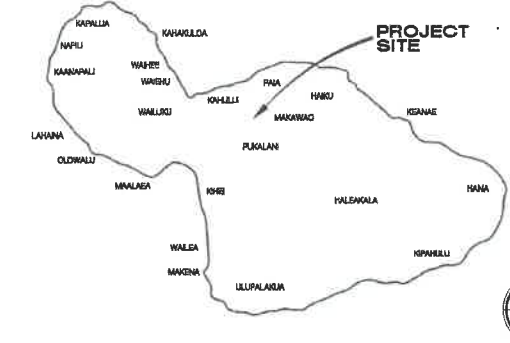
SITE INFORMATION

SITE ADDRESS: NOT ADDRESSED
HALIIMAILE, HI 96768
TAX MAP KEY: (2) 2-5-03:29
FEMA FLOOD DESIGNATION: X
PARCEL ZONING: R-1 (RESIDENTIAL
PARK ZONE
PUBLIC/QUASI-PUBLIC
TOTAL SITE AREA: 62.994 AC
DISTURBANCE AREA: 63.785 AC

OVERALL SITE PLAN



VICINITY MAP NTS



LOCATION MAP NTS



APPROVED BY

DIRECTOR, DEPARTMENT OF PUBLIC WORKS
COUNTY OF MAUI

CHIEF, ENVIRONMENTAL MANAGEMENT DIVISION
DEPARTMENT OF HEALTH, STATE OF HAWAII