

## CARE Committee

---

**From:** robin.s.knox@gmail.com  
**Sent:** Tuesday, August 31, 2021 3:37 PM  
**To:** Nicole A. Siegel  
**Cc:** CARE Committee  
**Subject:** RE: 9/1/21 CARE Committee meeting - information

You don't often get email from robin.s.knox@gmail.com. [Learn why this is important](#)

<https://docs.google.com/presentation/d/1P-1a3TTXt844LU5pcpv-gqZQY7tbzm5B/edit?usp=sharing&ouid=108048057143754990720&rtpof=true&sd=true>

---

**From:** Nicole A. Siegel <Nicole.Siegel@mauicounty.us>  
**Sent:** Tuesday, August 31, 2021 3:34 PM  
**To:** robin.s.knox@gmail.com  
**Cc:** CARE Committee <CARE.Committee@mauicounty.us>  
**Subject:** FW: 9/1/21 CARE Committee meeting - information

Hi Robin,

I copied the CARE Committee e-mail to send the presentation.

Thanks,

Nicole

Nicole Siegel  
Legislative Analyst  
Office of Council Services  
Phone: 808-270-8008  
Cell: 808-281-6579  
Email: [Nicole.Siegel@mauicounty.us](mailto:Nicole.Siegel@mauicounty.us)

---

**From:** Nicole A. Siegel  
**Sent:** Monday, August 30, 2021 12:11 PM  
**To:** [robin.s.knox@gmail.com](mailto:robin.s.knox@gmail.com)  
**Subject:** 9/1/21 CARE Committee meeting - information

Aloha Robin,

Below is the link for Climate Action, Resilience, and Environment (CARE) Committee meeting on Wednesday, September 1, 2021, at 9:00 a.m.:

<https://bluejeans.com/470076045>

I have also attached the meeting agenda.

Please try to log in a few minutes before the start of the meeting for introductions. The Councilmembers and the public will be able to see you and your presentation during the meeting, and you'll be able to see them as well. When you're not presenting, we typically have audio/video muted to eliminate unnecessary background

noise, as an FYI. You will be presenting on the first item, CARE-55. Committee staff will assist with sharing your presentation.

I'd anticipate your presentation starting around 9:30 a.m., depending on how long it takes to get through public testimony. It could possibly be earlier or later.

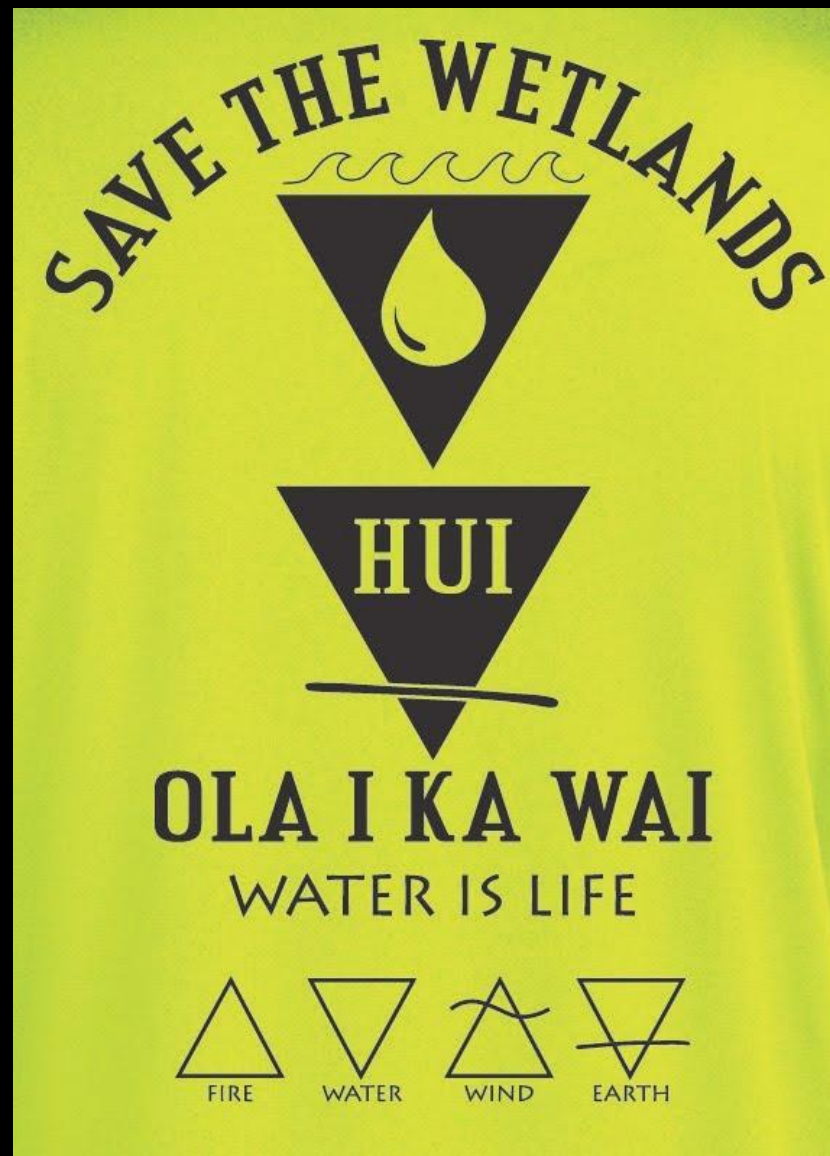
Would you kindly send the slides and other informational handouts (if any) by **tomorrow, August 21, 2021**, at 3:00 p.m., to [care.committee@mauicounty.us](mailto:care.committee@mauicounty.us)? There is no need to copy me – it automatically gets forwarded to me. A simple "please see attached" message will suffice. The subject line can simply say "CARE-55 presentation." About 10 minutes for the presentation is perfect, with possibly 10-15 minutes of follow-up questions from Committee members afterwards. They may also opt to send a follow-up letter to answer questions they may have, if they are requesting more comprehensive information.

Please let me know if you have any questions.

Mahalo,

Nicole Siegel  
Legislative Analyst  
Office of Council Services  
Phone: 808-270-8008  
Cell: 808-281-6579  
Email: [Nicole.Siegel@mauicounty.us](mailto:Nicole.Siegel@mauicounty.us)

Presentation to  
Maui County Council  
CARE COMMITTEE  
September 1, 2021









# Save the Wetlands-Keokea-Waiohuli Environmental Corridor and Cultural Project

Mahalo to our Sponsors



Project Scope



Wetlands Inventory and Mapping



Wetland Restoration



Public Education



Stakeholder Outreach

Wetland Function	Wetland Values
Sediment attenuation and reduction	Erosion control, better water quality in streams and ocean for recreation, fishing, and drinking water
Nutrient and chemical attenuation and reduction	Better water quality in streams and ocean for recreation, fisheries and drinking water, cleansing of waste materials, including nutrients, pesticides and herbicides
Flood attenuation and storage	Flood control, public safety within flood zones, groundwater recharge
Plant community abundance and diversity	Education and research, agriculture, urban quality of life, open space and aesthetics, timber production, historical and cultural importance, protection of native, threatened or endangered resources
Fish and wildlife habitat	Education and research, birdwatching, urban quality of life, aesthetics, hunting and fishing, historical and cultural importance, protection of native, threatened or endangered resources
Groundwater recharge and discharge	Groundwater use potential, increase water supply
Shoreline or stream bank anchoring	Protection of Property; Prevention of bank and shoreline erosion
Carbon Sequestration	Mitigation of climate change

areas that are inundated or saturated by surface or ground water at a frequency and duration sufficient to support, and that under normal circumstances do support, a prevalence of vegetation typically adapted for life in saturated soil conditions. Wetlands generally include swamps, marshes, bogs, and similar areas.



Clean Water Act



US Army Corps of Engineers®



*“Areas that have a predominance of hydric soils and that are inundated or saturated by surface or groundwater at a frequency and duration sufficient to support and under normal circumstances do support, a prevalence of hydrophytic vegetation typically adapted for life in saturated soil conditions*

*“Lands transitional between terrestrial and aquatic system where the water table is usually at or near the surface or the land is covered by shallow water”*



National Food Security Act, 2013



*“areas of marsh, fen, peatland, or water, whether natural or artificial, permanent or temporary, with water that is static or flowing, fresh, brackish or salt including marine waters, the depth of which at low tide does not exceed 6 meters” and “may incorporate riparian and coastal zones adjacent to wetlands and islands”*  
The artificial or man-made wetlands can include fishponds, salt pans, or loi kalo



# What is a wetland?

“There is no single indisputable definition due to the diversity of wetlands, and because there is a continuum or gradient between wet and dry lands”

**fgdc**  
Federal Geographic Data Committee

## Wetland Classification Systems

based on

Aquatic ecosystem

Substrate

Vegetation

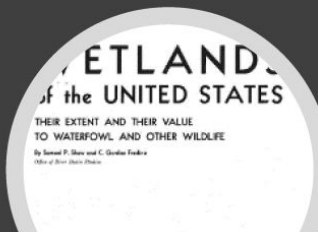
Water regime

Landscape

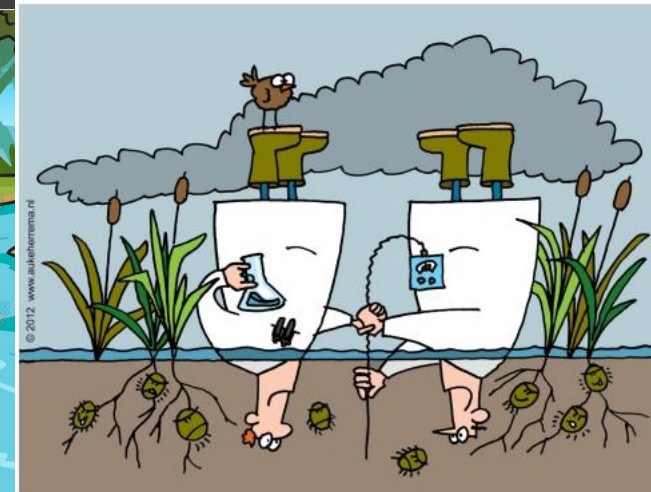
Plant communities

Ecological system

Function



## Wetlands and Deepwater Habitats of the United States



# What is a wetland?





Wetland Study area sites overlay





Wetland Nexus cluster in Central Kihei





Overland Surface flow diagram





stormwater flows connecting Welakahao, Wesco, Halama, La'ie (Mauka & Makai)

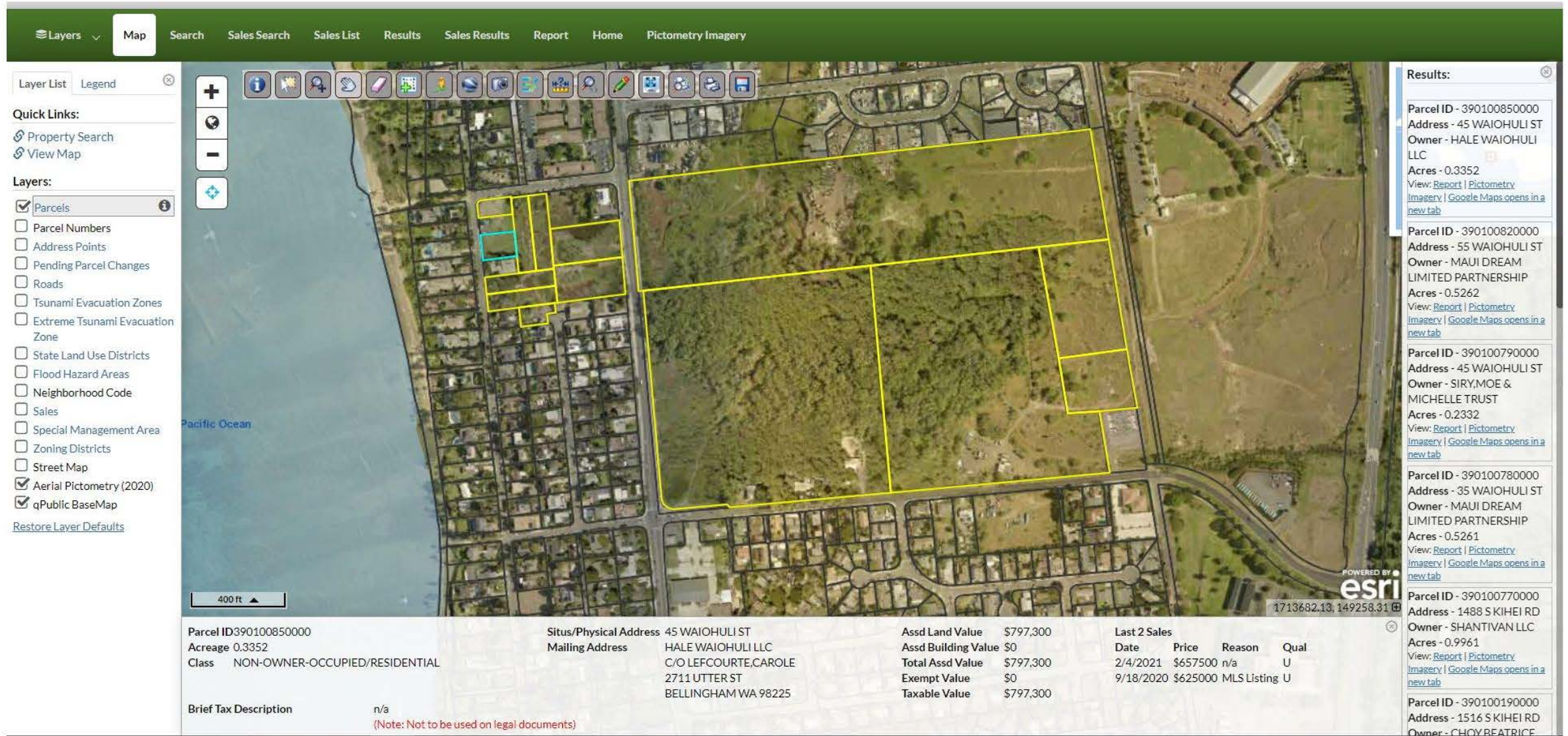




Stormwater flows connecting Welakahao, Wesco, Halama, La'ie Mauka & Makai (looking South)



# Kihei's remaining Wetlands are at risk of loss from development

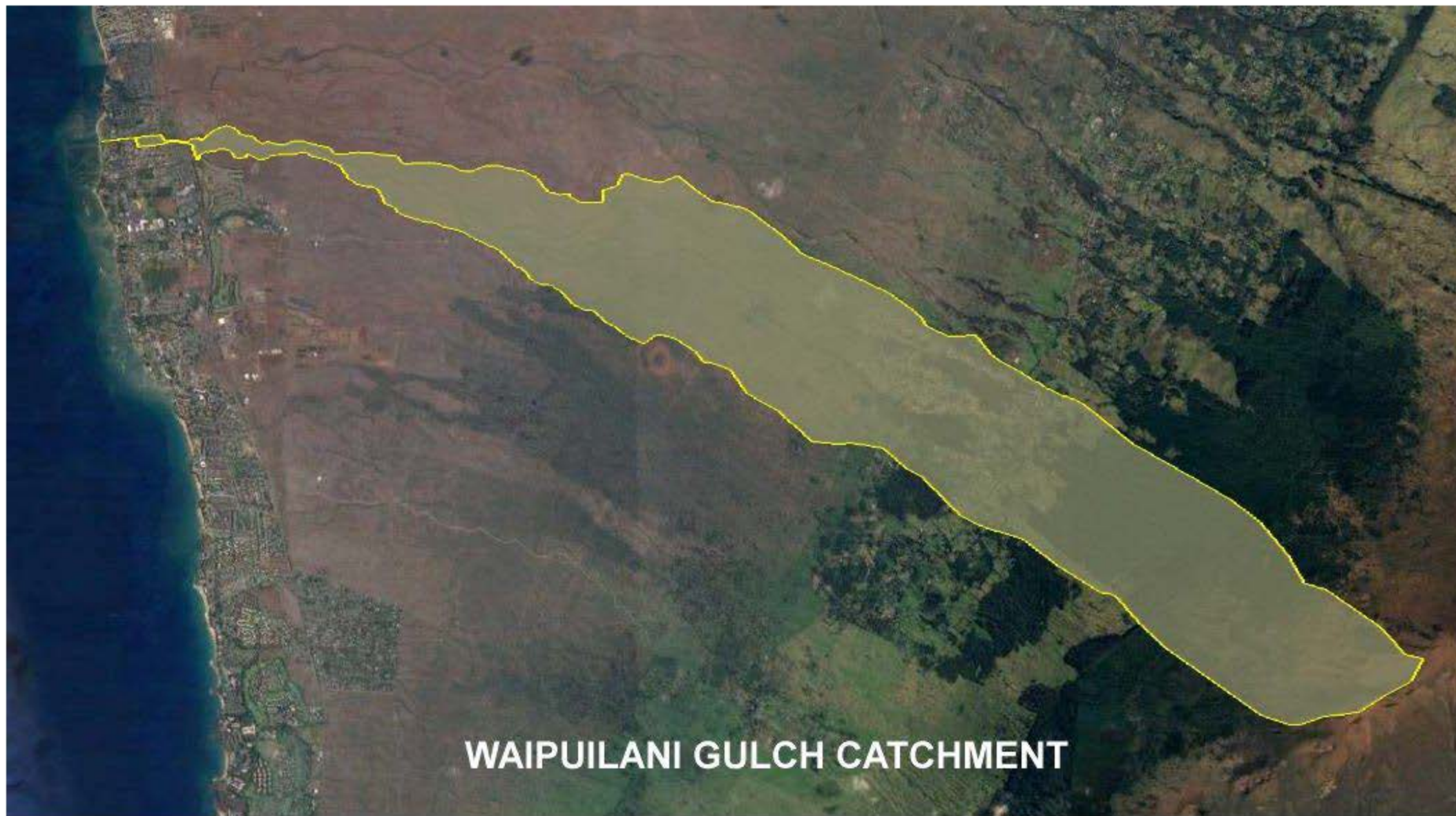


Wetland are predominantly located on privately-owned lots.









**WAIPUILANI GULCH CATCHMENT**





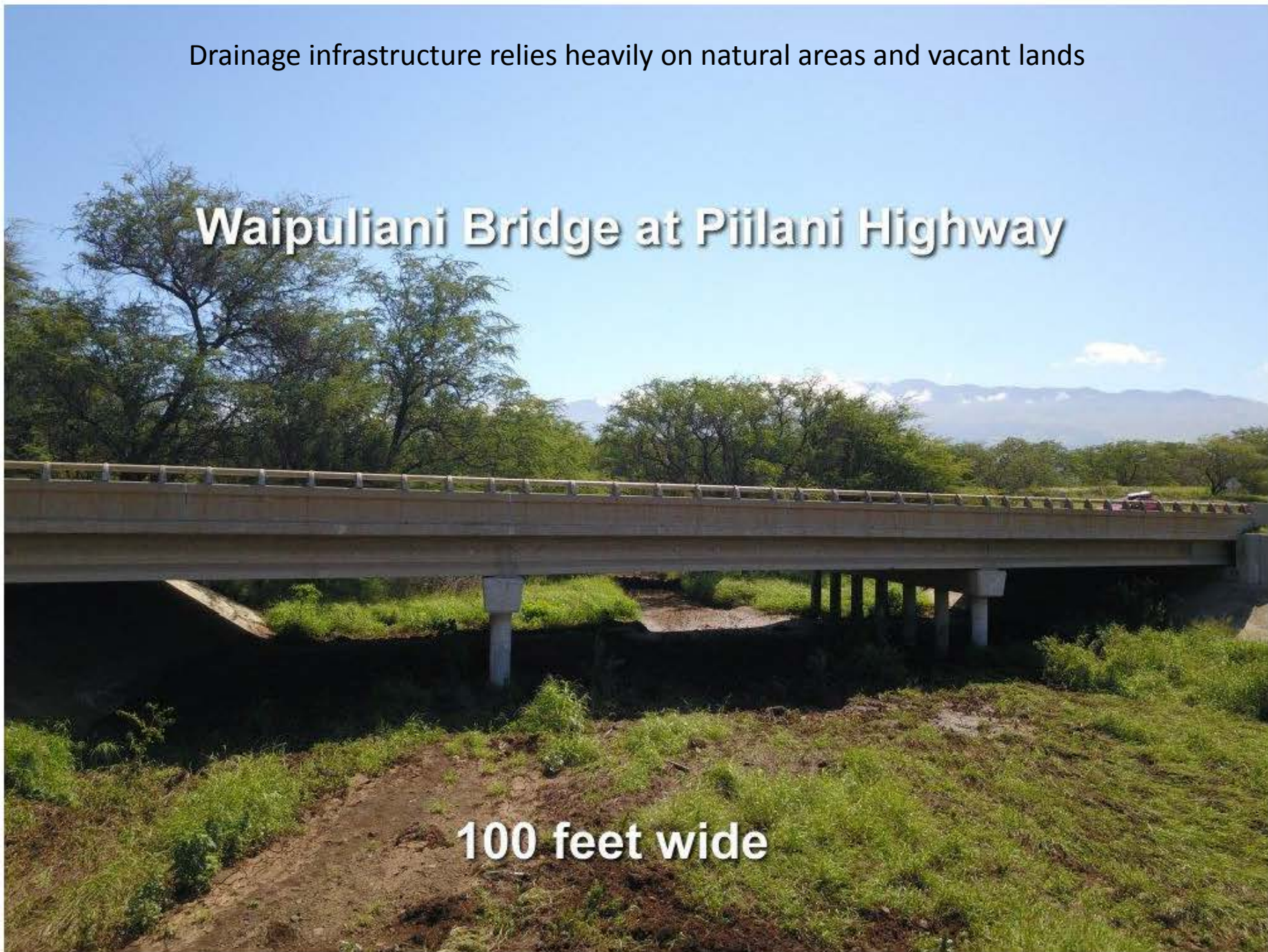
Waipuilani Gulch Catchment and Kahawai



Drainage infrastructure relies heavily on natural areas and vacant lands

## Waipuliani Bridge at Piilani Highway

100 feet wide







Wetlands are part of the watershed infrastructure





Proposed development filing in Waipuilani Gulch received SMA extension



Stormwater flooding from project site - Waipuilani Gulch







**Waipuilani Wetlands**





**Waipuilani wetland  
receiving stormwater**



Waipuilani Wetland Stream  
- Dune Breaking





**Stormwater from Waipuilani gulch  
flowing into the ocean.**



# Stormwater runoff from Waipuilani Gulch



Keeping floodwaters in wetlands reduces the amount stormwater runoff entering the ocean.





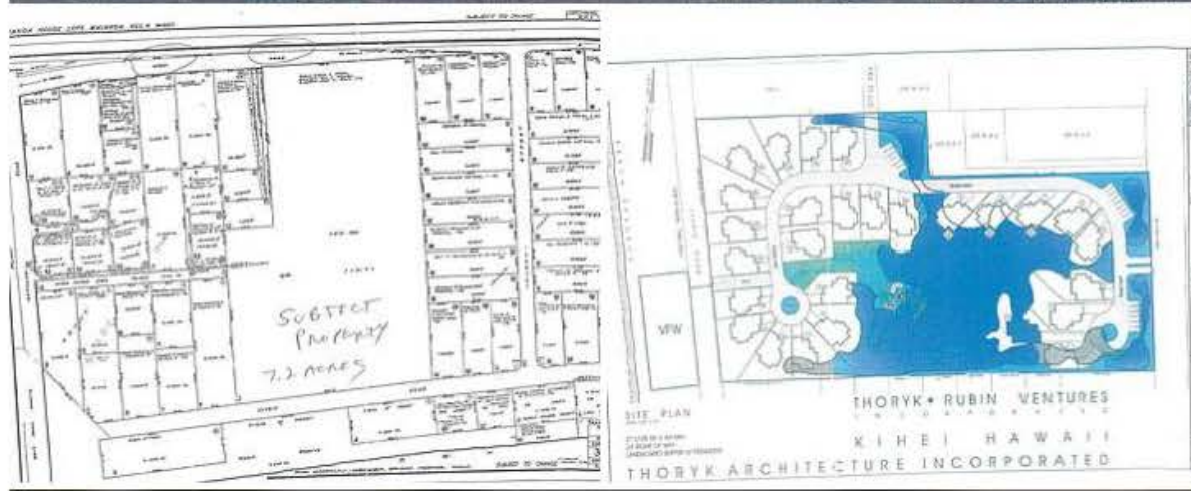
Wetlands associated with Fishponds and cultural sites, settlements.





Wetlands role in protecting coral reef





**\$4,950,000** 7.2 Acres

1144 S Kihei Rd, Kihei, HI 96753

[Contact Agent](#)

[Overview](#) [Facts and features](#) [Home value](#) [Price and tax](#) [+](#) [>](#)

Incredible location. This property runs from Kihei road down to Uluniu Street by the VFW hall and beach access. Property is zoned R-3 for 10,000 SF lots which may allow up to 2 ohanas. There was a plan for a 27 lot subdivision which never happened. Two of the acres are dedicated wet lands. A full wetland survey by Vuich Environmental Consultants was performed on December 27, 2004:Project # 0409-875. The full report is available to a serious developer/buyer. So, if the county allows a house and cottage then up to 81 units could be built. If you go affordable, add an ohana and up to 108 units could be built. The buyer should hire a professional planner and do the due diligence required to develop this property. The beauty of this land is that it is right across the road to the beach. This is one of the very last parcels with this zoning with this proximity to the ocean. This is a developer's dream. Do affordable and the county will give all the water you need. A market priced project might be harder to get through the county without the water. An SMA permit will be required. Walk to Azeka place phases 1 & 2 and even walk to the Safeway Shopping Center.

[Read less](#)



## EWA WETLANDS WATERSHED FEATURES



1. WAIOHULI KAI FISHPOND
2. EWA WETLAND
3. VFW (WETLAND)
4. YEE'S WETLAND
5. PIIKEA NORTH WETLAND,
6. PIIKEA SOUTH WETLAND
7. WAIPUILANI KIAWE SITE
8. WAIPUILANI 16E SITE
9. PIIKEA PARK RETENTION BASIN
10. SMALL WETLAND





Flooding on South Kihei Road - Stormwater drains to Ewa Wetland







